

FREE!!!

Palau Community College



MESEKIU'S NEWS



Friday, February 15, 2013

Weekly Newsletter

Volume 15, Issue 07

Arts & Sciences Student Presentations

Contributed by Leolin Tellei



(Front L-R) Megreos, Barmelio, Dr. Asang, Temaungil, Tellei, Espangel, and Nestor. (Back L-R) Tellei & Yaoch.

The Second Annual School of Arts and Sciences Forum was held on Friday, February 08, 2013 at PCC Assembly Hall. The forum featured presentations by students from Dr.

Isebong Asang's sociology and psychology classes. The students who presented were Marcia Barmelio, Vanessa Espangel, Shari Megreos, Daphne Nestor, and Elsei Tellei.

Presentations cont'd on p.2

Congratulations Rudimch & Thomas



Rudimch & Thomas duly sworn in.

CONGRATULATIONS! Ewing Rudimch and Ronnie Thomas join the rank of officers of the Associated Students of PCC (ASPCC) as they took their oath of office with Dean of Students Sherman Daniel on Friday, Feb. 08, 2013. Mr. Rudimch is the Freshmen Representative Elect and Mr. Thomas is the Republic of the Marshall Islands (RMI) Student Leader. The ceremony was witnessed by Student Trustee Summer Saunders, Director Hilda Reklai and Student Life staff - Counselors

Congratulations cont'd on p.3

Day Care Kids Tour PICRC

Contributed by Robert Ramarui

The children from Belau Day Care Center along with their teachers and parents went to visit Palau International Coral Reef Center (PICRC) on Friday, Jan. 25, 2013. The objective of the field trip was to provide opportunity for the kids to relate what they have learned from Day Care to the field trip site. The activity theme for the month of January was "environment." The children, parents

Day Care cont'd on p.3



Day Care kids with parents and teachers.

Happy Valentines
to all
Elementary, High School,
and PCC Students in Palau.

Presentations cont'd from p.1

Ms. Vanessa Espangel, Nursing
“On shifting Sands: (Re)defining Palauan Educational Border”



Ms. Espangel focused on the educational aspect of our Palauan heritage. Education for Palauans began when the role of teaching fell upon the clan, and the community as a whole. Until the arrival of German missionaries, a formal form of education was formulated to lure Palauans into Christian conversion. The Japanese Era also brought change in education with the establishment of schools that taught arts, geography, history, and established carpentry schools that usually provided job opportunities for Palauans. After WWII, Palau adopted the U.S style of education. For the first time in about a hundred years, Palauans had a role in administering the education for its children. Today, the Palauan government works to instill cultural programs and education through our formal education system. This shows our efforts to preserve our cultural identity as well as those values that characterize who we are as Palauans, despite the transitions of educational administrations over the years.

Ms. Marcia Barmelio, Nursing
“Dangerous Acts of Worship: Spiritual or Religious?”



Ms. Barmelio talked about religion and spirituality. Acts of worship can be dangerous because of how they affect others in the community. They can be reflected in the form of wars, prejudice, or discrimination. Spirituality and Religion can impact people’s attitudes and behavior and in some situations, they are considered socially dangerous.



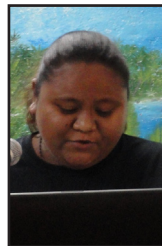
**Ms. Leolin
Tellei
Facilitator**

Ms. Daphne Nestor, Elementary Education
“Politics of Gender: The Art of Raising Sonsorolese Daughters?”



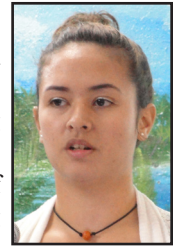
Ms. Nestor enlightened the audience about the Sonsorolese’s culture in raising a daughter into a woman. The Sonsorolese valued their daughters and made elaborate ceremonies to celebrate their beauty and transition into womanhood. The parents bore this transition with pride. Such ceremonies included ear piercing, menarche, and arranged marriage. These were politics of gender because it was a matter of life and death. Penalties for not following these customs came with a price of public shame or even exile for the daughters. From various interviews, some of the older generation were saddened to see the change in celebrating these ceremonial practices for the Sonsorolese people. Others were content to accept that time has changed, as well as how things are being done. The younger generation were glad that these traditions have changed. Multiculturalism, as well as external influences, have certainly impacted values and attitudes of some Sonsorolese towards their customs.

Ms. Shari Megreos, Nursing
“(Re)conceptualizing Adoption: Is it Love or Money?”



Ms. Megreos explored the adoption of a child for love or the desire for gaining money and/or land. She explained the types of adoption practised in Palau, and presented various reasons why people adopt kids. Such reasons include infertility, the desire to balance gender ratio among children, desires for single parenting, gay couples desiring to have children, and the desire and need to have someone be a care taker for an elderly in future time. Through interviews, she concluded that adoption was like politics, involving both commitment and the desire to keep money and land within the family. Adoption is a very sensitive issue for adopted children. It affects them psychologically and emotionally, where many may ask questions as to why they were adopted. We may need to explore other people’s perspectives and feelings on this issue in order for us to be able to redefine the word *Adoption*.

Ms. Elsei Tellei
“Violent Behavior Among Palauan Men: Is It Cultural?”



Elsei’s presentation is based on her research about the violent tendencies among Palauan men. Violence is not only the result of peer pressure and defying social and cultural norms.

It is also a result from parenting styles. It is a result of caving in to build up negative emotions that are not expressed in healthy or productive ways. Such emotions may create stress.

There are four types of parenting styles: *Authoritarian* (disciplinary and shows no remorse for child’s needs or wants), *Authoritative* (disciplinary but gives good reason and cares about the child’s needs and wants), *Permissive* (shows little or no care for the child), and those who ignore their children.

Parenting styles can affect a child’s violent tendencies when a parent has no regards for the child’s psychological wants and needs, and exerts too much pressure on the child by being judgmental or over expectant through discipline.

There are two ways to prevent violent behaviors: Prevention, which happens at a very early age; and intervention, which is ideal for young children and teens. These can be established by adopting the authoritative parenting style, as well as introducing children to productive ways of expressing feelings through art therapy (dancing, singing, and wood carving). In a way, our culture plays a role in violent tendencies because traditionally we have raised our children to be obedient and to conform to our social expectations.

We can help our children by being more nurturing to their needs and desires as well as teaching them to express emotions more productively.

Dr. Isebong Asang congratulated the students for their courage and work accomplishment. This forum was made possible through the efforts of Dr. Asang, Marianne Temaungil, Johvanna Yaoch, and Ms. Leolin Tellei.

DVD copies are available.
Contact Dr. Asang at the Faculty Office during office hours at 488-2471 x 240.

BITS AND PIECES...

TOEFL Test Date

**TOEFL TEST - MAY 04, 2013
SATURDAY**

Online Registration Deadline
April 01, 2013
\$160.00

Tan Siu Lin PCC Library

Hours of Operation

Monday to Thursday: 8am - 8pm
Friday: 8am - 5pm
Saturday: 9am - 6pm
Sunday: CLOSED
Call 488-3540 for information

Calendar of Events

Feb 22 (F) Last Day to Remove
Incomplete Grades
for Fall 2012
Mar 4-8 (M-F) Mid-Term Period
Mar 11-14 (M-F) Students' Spring
Break
March 15 (F) Youth Day (Holiday)

A Note of Apology to our readers for inadvertently indicating that Mar. 15 (F) is Students' Spring Break in Feb. 08, 2013 Mesekiu's News, Volume 15-Issue 06.

News/Stories Wanted

MESEKIU'S NEWS welcomes stories/articles/announcements from students, faculty, and staff. Submission deadline is Tuesday at 4:30 p.m. in hard and/or electronic copies to dilubchs@palau.edu and alvinam@palau.edu.

Articles from MOC/PCC Alumni are also welcome.

Please call 488-2470/2471 x 251, 252, & 253 for more information.

Day Care cont'd from p.1

and teachers had a chance to see different kinds of fish, corals, jellyfish and other marine species and their environments.

PCC Belau Day Care wants to thank PICRC management and the Aquarium staff for this great learning opportunity and exciting field trip for the kids.



Day Care kids with teachers and parents at PICRC entrance.

Congratulations cont'd from p.1

Glendalyn Ngirmeriil, Shelley Ueki, Winfred Raymond,
Recheungel, and Work Study student, Karma



(Front L-R) Ngirmeriil, Rudimch, Thomas, and Dean Daniel. (Back L-R) Ueki, Recheungel, & Trustee Saunders, and Raymond.

Health Insurance Enrollment

Enrollment Forms for Calvo's Select Care are now available at the Human Resources Office. Anyone who is interested to enroll is requested to stop by the Human Resources Office and fill out the necessary forms. Enrollment has been extended to Feb. 28,

2013.

If you enroll by Feb. 20, 2013, your coverage will be effective March 01, 2013. If you enroll by Feb. 28, 2013, your coverage will be effective April 01, 2013.

ALUMNI NOTES

Class of 2011

Sione R. Isechal



Earned an Associate of Applied Science in Automotive Mechanics. He is a Port Agent of Eurasia Pacific Inc.

Message: Attend PCC. It helps get you a nice job.

Class of 2012

Christopher Isamu



Earned an Associate of Science in Business Accounting. He is working as an Inventory Clerk at WCTC warehouse for the past six months.

Message: Work Hard. Never give up.

Class of 2012

Jurah L. Tellei



Earned an Associate of Applied Science in Office Administration. She is a Docket Clerk at the Clerk of Courts.

Message: School is the key to success.

Alumni Notes

Showcases MOC & PCC alumni who are positive role models and contribute to the quality of life in their local communities.

If you are that alumnus/alumna or know someone who is, please contact the PCC Development Office at telephone numbers 488-2470/2471 x 251, 252, and 253.

We would like to feature you in future *Mesekiu's News* issues.

PCC website: www.palau.edu



Mesekiu's News
Palau Community College
P.O. Box 9, Koror, Palau 96940

PCC Endowment Fund Donors

Dr. Tellei, administrators, faculty and staff, and students
THANK YOU for your commitment to increase our College's Endowment Fund.

Please file your application for tax refund on or before Friday, March 29, 2013.

Stop by the Development Office for assistance.

JOIN THE ENDOWMENT FUND TODAY!

Invest in the future of Our Students, Our College, and Our Nation

To support, contact us today!

P.O. BOX 9 Koror, PW 96940

Phone: (680) 488-2470/2471 ext. 251/253

Email: tellei@palau.edu

If you want to enroll in the Biweekly

Allotment program, call us NOW.

Vacancy Announcement

- (1) *Federal Work-Study Coordinator, Office of Admissions & Financial Aid*
Salary range: \$12,049 - \$20,607 per annum
- (2) *English Instructor, Learning Resource Center*
Salary range: \$14,802 - \$24,647 per annum
- (3) *Air Conditioning & Refrigeration Instructor Academic Affairs*
Salary range: \$16,010 - \$21,191 per annum
- (4) *Math Instructor, Learning Resource Center*
Salary range: \$14,802 - \$24,647 per annum
- (5) *Librarian, Tan Siu Lin PCC Library*
Salary range: \$16,010 - \$24,647 per annum

For application forms and information, please contact Harline Haruo at PCC Human Resources Office at 488-2470/71, ext. 227.

Email hr@palau.edu or download form at www.palau.edu

To PCC Administrators and Faculty & Staff

Kom Kmal Mesauler a Omeletkiu er a Taem el Kngara Klengit el Reng.
A Omeletkiu me a Suliu a Kmal Diak Kubes.

Teongel Ngirkelau
Registrar & Records

Celebrating Birthdays

Nena H. George Feb. 20

Ruskey Remoket Feb. 24



Happy Birthday To You!

Special Air Fares for Palauan Students

Fly Delta Airlines

Traveling from Palau to Honolulu and the U.S Mainland

Call 488-2255 Monday-Friday (except holidays) 7:00 am - 4:00 pm

PALAU BEACH BUNGALOWS

Peace & Relaxation Palauan Style!

Only \$40+tax daily rate

Private a/c bedroom&bath, living room, kitchenette

Beachside on big island of Babeldaob Melekeok State

30 minutes from Palau International Airport

RESERVATIONS: 680.587.2533

Swim, snorkel, jungle walks, cultural sites

palaubeachbungalows@palaunet.com

www.palauparadise.com