

FREE!!!

Palau Community College



MESEKIU'S NEWS



Friday, March 28, 2014

Weekly Newsletter

Volume 16, Issue 13

Spring 2014 Recruitment and Financial Aid Night

contributed by the Office of Admissions & Financial Aid



Dean of Students Sherman Daniel during a recruitment and financial aid session.

From February 04, 2014 to February 14, 2014 representatives from the Office of Admissions & Financial Aid of Palau Community College (PCC) were busy with recruitment and financial aid sessions at the local high schools. Recruitment sessions were held during the day while financial aid sessions were held at night. Both students and parents were invited to the sessions. The representatives from the Office of Admissions & Financial Aid included Admissions Counselor Mekreos Silil, Financial Aid Counselor Lakolani Olngellel, and Federal Work Study Coordinator Stephanie Minor.

Topics discussed during the recruitment meetings included the PCC academic programs, services, and the admissions requirements. Admissions application forms were distributed to interested seniors and were complete with the assistance of the college personnel.

During financial aid session, topics discussed included information about Federal Student Aid programs and eligibility requirements. Forms were distributed and completed by interested senior students. RECRUITMENT, CONTINUED ON PAGE 3

Osaka University Visits PCC

Students from the Osaka University in Japan visited the campus of Palau Community College (PCC) on Monday, March 17, 2014. The students were a part of the Cross-Boundary Innovation (CBI) Program, an educational program of the university that aims to “cultivate individuals with the creative and strategic skills needed to deal with diverse challenges.” In other words, students involved in the program are taught to think in creative manners that “cross the boundaries” between science, arts, and other fields of studies.

By expanding the boundaries of knowledge and promoting collaboration between students in different fields of learning, the program allows young minds to practice creative means of adapting to today’s globalizing world society. During their visit to PCC, the students of Osaka University shared their CBI studies of Palau which covered the mythical and scientific origins of the legendary *Badrulchau* (giant stone monoliths) of Ngerchelongs.



Osaka University students visiting PCC.

Palau Community College is an accessible public educational institution helping to meet the technical, academic, cultural, social, and economic needs of students and communities by promoting learning opportunities and developing personal excellence.

Protocol and Conference Management



Attendants of the Protocol & Conference Management Training at the PCC Assembly Hall.

A course on Protocol and Conference Management was held at the Palau Community College (PCC) Assembly Hall from Wednesday, March 26, 2014 to Friday, March 28, 2014. During the three-day course, participants were taught about the basic elements and application of Protocol as well as the concepts of conference management. The training aimed to teach the necessary diplomatic skills to individuals working in areas that provide services to foreign nationals.

The first day of training introduced participants to the skills necessary for managing and hosting conferences. Following this lesson was a presentation about formal Protocol which included the order of precedence, forms of addresses/titles, ceremonial activities, and the Protocol of flags. The next day covered topics about organizing and hosting multilateral conferences, skill information for liaison officers, and seat arrangement exercises. On the final day, topics that needed further discussion or topics that were not mentioned in the previous days were covered.

Participants of the three-day course included the foreign services officers of Palau. The training was conducted by the Carlos P. Romulo School of Diplomacy. It was organized by the Office of Asian and Pacific Affairs (ASPAC) of the Department of Foreign Affairs through the Foreign Service Institute of the Republic of the Philippines.

FIND PCC ONLINE FOR MORE INFORMATION



pcc.palau.edu



Palau Community College - PCC

Palau Parents Empowered Fundraiser



(left to right): Telau Ridpath, Marlena Moses, and Executive Director of Palau Parents Empowered Sisca M. Misech.

On Thursday, March 20, 2014 the Palau Parents Empowered Group held a fundraising drive at the Palau Community College (PCC) Parking Lot. All through the day, members of the organization collected donations from the community to help fund the medical referral of Marlena Moses, the foster daughter of Telau Ridpath. Numerous people stopped by the fundraising tent to show their support for Ms. Moses.

Ms. Moses is a victim of child abuse. As a child, she had endured physical abuses before being adopted into the care of Mrs. Ridpath. Her physical abuses had left a number of traumatic damages on her body, particularly a breathing problem due to a broken nose. In order to improve her breathing, Ms. Moses had been medically referred for a nose surgery. Ms. Moses is currently a student of Meyuns Elementary School.

The fundraising event was sponsored by the Palau Parents Empowered Group, a non-profit organization formed in Palau that serves as a resource center for parents of children with special needs. Services provided by the non-profit organization include parent trainings, home visits, and one-on-one counseling.

DAVID WILLIAMS MEMORIAL SCHOLARSHIP

Applications available at the
PCC Development Office!

Deadline: April 18, 2014

BITS AND PIECES...

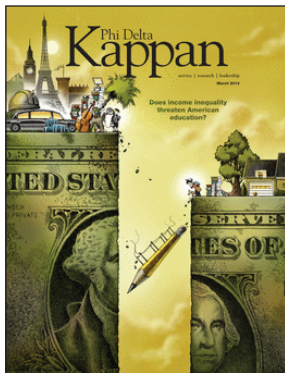
Tan Siu Lin PCC Library

Hours of Operation

Monday to Friday 7:30AM - 7PM
 Saturday 9AM - 6PM
 Sunday CLOSED

For more information, call:
 488-3540.

AVAILABLE TO INTERESTED READERS:
PHI DELTA KAPPAN MAGAZINE



"Phi Delta Kappan Magazine is the professional magazine for anyone who cares about K-12 education. The magazine features articles about classroom practice, policy, research, professional issues, and innovations in education."

Academic Calendar: Spring 2014

April 02 (W)
 PCC Charter Day

April 04 (F)
 PCC Charter Day Celebration

May 05 (M)
 Holiday: Senior Citizens' Day!

May 09 (F)
 Last Day of Instruction

May 12-14 (M-W)
 Final Examination Period

News/Stories Wanted

MESEKIUS' NEWS welcomes stories/articles/announcements from students, faculty, and staff. Submission deadline is Tuesday at 4:30 p.m. in hard and/or electronic copies to dilubch@gmail.com or tchuziet@gmail.com.

Articles from MOC/PCC Alumni are also welcome.

Please call 488-2470/2471 (extensions 251, 252, or 253) for more information.

Recruitment CONTINUED FROM PAGE 1

The college was able to reach 165 (64%) of the 259 local high school seniors and assisted each in completing PCC application forms. As part of the recruitment activities, the Office of Admissions & Financial Aid will continue to contact students who were not able to attend the sessions. The office will also continue to provide information and assistance to any student interested in attending to PCC.

For more information regarding the Admissions & Financial Aid for the School Year 2014-2015, you may contact the PCC Office of Admissions & Financial Aid at 488-2470, ext. 235.



Meeting with students of Palau High School.



Visiting students at Bethania High School.



Recruitment at Belau Modekngai High School.



Admission Counselor Mekreos Silil



Recruitment meeting at CE Training Room.



Parents and students at financial aid meeting.

Faculty-Senate Association (FSA) Scholarship

SCHOOL YEAR 2014-2015

The Faculty-Senate Association (FSA) Scholarship for the school year 2014-2015 is now available! Application forms can be picked up at the Palau Community College (PCC) - Development Office.

DEADLINE: JULY 31, 2014

ALUMNI NOTES

RINGO ULTIKAKI

(Class of 1994)

CERTIFICATE OF ACHIEVEMENT - GENERAL ELECTRONICS

"Go to school and learn so you can contribute to our community!"



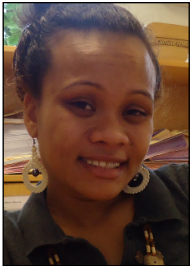
Ringo earned a Certificate of Achievement in 1994 for General Electronics. For the past sixteen years, he has been working as a Network Technician II for the Palau National Communications Corporation (PNCC).

SHARRISE NGIRAKED

(Class of 2012)

ASSOCIATE OF APPLIED SCIENCE - T&H: HOTEL OPERATIONS

"Motivation is what gets you started. Habit is what keeps you going! Never give up on school. Once you learn to give up, it becomes a habit."



Sharrise graduated in 2012 with an AAS Degree in Tourism & Hospitality: Hotel Operations. After interning at Cliffside Hotel, she was hired by the hotel as the Food & Beverage Manager.

EDWARD KENIC

(Class of 1999)

CERTIFICATE OF ACHIEVEMENT - GENERAL ELECTRONICS

"PCC is affordable and accessible! Enroll, get a degree, then pursue your education abroad."



Edward earned a Certificate of Achievement from PCC in 1999 for General Electronics. He interned as a Lineman for the Palau National Communications Corporation (PNCC). For the past seven years, he's been working as a Fire-fighter II for ARFF.



Mesekiu's News

Palau Community College

P.O. Box 9 Koror, Palau 96940

ALUMNI NOTES showcases MOC & PCC alumni who are positive role models and contribute to the quality of life in their local communities.

If you are that Alumna/Alumnus or know someone who is, please contact the PCC Development Office at telephone numbers 488-2470/2471 (extensions 251, 252, or 253).

We would like to feature you in future *Mesekiu's News* issues.

PCC Mesekiu Baseball Team Crushes Opponent



After losing two consecutive games to defending champions Airai Aces and Ngerbeched, Palau Community College (PCC) returned to the winning column via a ten-run rule victory over Ngerbeches. By the superb pitching of Dailey Kinto and the potent offense led by Vincent Kulas (4 for 5 including an inside-the-park homer), Ray Rumong (2 for 3 with a two-run homer), Joshua Mongkey (3 for 4) and Jullinson Alik (2 for 4), PCC easily defeated Ngerbeches by a score of 17-7 in five innings. Also contributing offensively were Caleb Meltel, Jesse Jonathan, RT Tellei, and Oreokl Daniel.

Off to a slow start, Kinto gave up seven hits in the first two innings but eventually settled down to hold the opponents to only four hits in the rest of the game. According to Coach Sato, the performance of the PCC Mesekiu Team in this particular game demonstrated the amount of time and dedication that the team had put into preparation for the season. Should the team maintain this level of performance, it is destined to enjoy more "Ws" for the rest of the season.

Celebrating Birthdays

Kaiden Skilang



March 28

HAPPY BIRTHDAY!

Vacancy Announcement

- (1) *English Instructor*
(Learning Resource Center)
Salary range: \$14,802 - \$24,647 per annum
- (2) *Adjunct Instructors*
(Academic Affairs Office)
Salary range: determined by class credits, educational level, and experience.
- (3) *Nursing Instructor*
(Academic Affairs Office)
Salary range: \$16,010 - \$28,280 per annum

For application forms and information, please contact *Harline Haruo* at **PCC Human Resources Office** at 488-2470/2471, extension 227.

E-mail hr@palau.edu or download forms at <http://pcc.palau.edu>

PCC is an Equal Opportunity Employer

PCC Endowment Fund

INVEST IN THE FUTURE
OF OUR STUDENTS, OUR COLLEGE, AND OUR NATION

To SUPPORT, CONTACT US TODAY!

P.O. BOX 9 Koror, Palau 96940

Phone: 488-2470/2471 (extensions 251/253)

e-mail: tellei@palau.edu

If you want to join the Biweekly Allotment Program, **contact us NOW!**

Stamp Here