

FREE!!!

Palau Community College



MESEKIU'S NEWS



Friday, October 02, 2015

Weekly Newsletter

Volume 17, Issue 40

Taiwan Youth Ambassadors Meet with PCC Students



PCC students, PCC President Dr. Patrick U. Tellei (sixth from left, standing), and PCC Mandarin Language Instructor Hua-Hsin Hsu (fifth from right, standing) with the 2015 Taiwan Youth Ambassadors

The 2015 Taiwan Youth Ambassadors met with students from Palau Community College (PCC) on Friday, September 18, 2015. During their meeting, the PCC students exchanged with the youth ambassadors information about their cultures. The Taiwan Youth Ambassadors introduced aspects of the Taiwanese culture through song & dance performances that focused on creativity and heritage.

The nineteen (19) youth ambassadors who visited Palau were among the hundred-and-sixty (160) university students selected to represent the Republic of China (ROC). The youth ambassadors were divided into ten (10) groups and visited thirty-five (35) countries worldwide. The program's theme was "Youth From Taiwan, Compassion for All." TAIWAN, CONTINUED ON PAGE 3

SDSU Professor Dr. Abdel-Samad

Last week, San Diego State University (SDSU) Assistant Professor Dr. Mounah Abdel-Samad was teaching on-site the fourth course for the Palau cohort currently enrolled in the SDSU Master's Degree in Public Administration. He taught PA-630 (Seminar: Public Personnel Administration) which was facilitated by Mrs. Sandra S. Pierantozzi. PA-630 is designed to introduce public administration students to the functions, contexts, and issues that constitute the field of personnel administration practiced in the public sector. On Friday, September 25, 2015 Dr. Abdel-Samad visited with the United States Ambassador to Palau Amy J. Hyatt at the United States Embassy. SDSU Assistant Professor Dr. Abdel-Samad teaches Public Administration & Policy for the SDSU School of Public Affairs.



(left to right): SDSU Assistant Professor of Public Administration and Policy Dr. Mounah Abdel-Samad, PCC President Dr. Patrick U. Tellei, and Course Facilitator Sandra S. Pierantozzi



Happy Independence Day, Palau!

"Aki ultuier a di mla ngar ngii el cherrungel el klisicham, e kemam el chad er a Belau a mchisii e lmuut el smisichii a dim la ngar ngii er a rechuodel el mei el diak a ngar uchei er ngii el klisicham er a derderel a ikal iungng er a Belau, el belumam er a cheroll!"

From the Palau Community College Board of Trustees, President, Faculty, Staff, and Students

Palau Community College is an accessible public education institution helping to meet the technical, academic, cultural, social, and economic needs of students and communities by promoting learning opportunities and developing personal excellence.

PCC Instructors Participate in Training



Instructor Marvin Yarofaisug (second from right, front row) and Instructional Assistant Santini B. Thomas (far left, front row) at the training for Yamaha motors in Japan

Palau Community College (PCC) Instructor Marvin Yarofaisug and Instructional Assistant Santini B. Thomas recently participated in an instructor training program for Yamaha motors. The training was held in Japan from September 13, 2015 to September 19, 2015. Subjects covered during the training included the following: basic structure & theory of marine engine; rigging setting (how to set-up & adjust an outboard motor to a boat); power-head service (timing belt replacement & valve clearance & adjustment); and lower unit service (bearing measurement, lower unit shim selection & services). Instructor Yarofaisug and Instructional Assistant Thomas teach the Small Engine & Outboard Marine Technology Courses at PCC.

7th European Film Festival

October 02, 2015 - October 05, 2015

As part of Palau's Independence Day celebrations, the 7th European Film Festival will be held at the Assembly Hall of Palau Community College (PCC). The event will feature movies from across Europe, ranging from animated film to drama. All are invited to the free-viewing of the movies!

First Viewing will be on Friday, October 02, 2015

**PLACE: PCC Assembly Hall
VIEWING TIME: 6PM - 8PM**

Matson Navigation Donates to PCC



(left to right): Matson Navigation General Manager Bernadette Valencia presenting company's donation to PCC President Dr. Patrick U. Tellei in support of the PCC Endowment Fund

Palau Community College (PCC) recently received a donation of \$500 from Matson Navigation Co., Inc. The donation was made in support of the PCC Endowment Fund. Matson Navigation Co., Inc. General Manager Bernadette Valencia presented the donation to PCC President Dr. Patrick U. Tellei on Friday, October 02, 2015. The college would like to thank Matson Navigation Co., Inc. for its generous support!

PCC Tourism Club Holds Meeting



Members of the PCC Tourism Club with Tourism & Hospitality Instructor Stephanie B. Nakamura (third from left, back row)

On Friday, September 24, 2015 the Tourism Club of Palau Community College (PCC) held a meeting at the Palau Tourism & Hospitality School of Excellence (PTHSE). The members met to discuss the club's fundraising efforts & participation plans in the upcoming Independence Day celebration. Tourism & Hospitality Instructor Stephanie B. Nakamura was also present at the meeting.

BITS AND PIECES...

Tan Siu Lin PCC Library

Hours of Operation

Monday to Thursday 7:30AM - 7PM
 Friday 7:30AM - 5PM
 Saturday 9AM - 6PM
 Sunday CLOSED

For more information, call:
 488-3540

AVAILABLE TO INTERESTED READERS: PACIFIC DAILY NEWS (PDN)



"The Pacific Daily News offers readers the latest local headlines and stories covering Guam, Micronesia, and the Pacific Rim region along with breaking news from the United States and the world. A copy is made available to the Tan Siu Lin PCC Library courtesy of United Airlines."

Academic Calendar: Fall 2015

October 05-09 (M-F)
 Mid-Term Period

October 26 (M)
 Last Day for All Withdrawals

October 29 (TH)
 SPRING 2016 Pre-Registration

December 04 (F)
 Last Day of Instruction

News/Stories Wanted

Mesekiw's News welcomes stories/articles/announcements from students, faculty, and staff. Submission deadline is Wednesday at 4:30 p.m. in hard and/or electronic copies to dilubch@gmail.com or tchuziet@gmail.com.

Articles from MOC/PCC Alumni are also welcomed.

Please call 488-2470/2471 (extensions 251, 252, or 253) for more information.

Taiwan CONTINUED FROM PAGE 1

The International Youth Ambassadors Exchange Program provides Taiwan youth with the opportunity to broaden their knowledge of international affairs. Since 2009, university students from Taiwan have visited nations around the world to promote their cultural heritage as well as learn about the influence that Taiwan has had on different sectors in respective countries. This year's exchange program was an opportunity for the students to highlight Taiwan's interest in humanitarian aid and global sustainability.



PCC students meeting with the Taiwan Youth Ambassadors at the PCC Assembly Hall



The Taiwan Youth Ambassadors performing a dance for the PCC students

ASPCC President Benigno S. Sablan Sworn-In



ASPCC President Benigno S. Sablan (left) taking his Oath of Office

The Associated Students of Palau Community College (ASPCC) President Benigno S. Sablan took his Oath of Office on Tuesday, September 29, 2015. It was administered by PCC Dean of Students Sherman Daniel. This is the second year that Mr. Sablan has been elected to represent the PCC student body as ASPCC President.

🎵

PCC ALMA-MATER SONG COMPETITION

— ENTER FOR A CHANCE TO WIN \$1000! —

— TOP FIVE (5) FINALISTS WILL RECEIVE \$50! —

COMPETITION RULES & GUIDELINES

- 🎵 Entries must be in the form of written out music notation in English.
- 🎵 ALL ENTRIES must not exceed three (3) stanzas and no more than eighty (80) words.
- 🎵 GROUP ENTRY is welcome but NO MULTIPLE ENTRIES by the same individual or group.
- 🎵 Entry must be ORIGINAL WORDS & MELODY. An optional four-part choral setting or piano-vocal arrangement accompanied entries are acceptable.
- 🎵 Entries must be submitted to the PCC DEVELOPMENT OFFICE at DORT BUILDING by Friday, October 23, 2015. Submissions may also be sent to tchuziet@gmail.com.

**FOR MORE INFORMATION, CONTACT THE PCC DEVELOPMENT OFFICE AT
 (TEL): 488-2470/2471 ext. 251, 252, or 253.**

FACULTY & STAFF PROFILE

STEPHANIE B. NAKAMURA

TOURISM & HOSPITALITY INSTRUCTOR

"Study hard and challenge yourself. Don't settle for less; get the highest education that you can achieve."



Stephanie B. Nakamura has been an Instructor for the Tourism & Hospitality Courses of Palau Community College (PCC) for the past year. She previously served as an adjunct instructor for the program. Instructor Nakamura holds an Associate of Science Degree in Travel & Tourism from Kapiolani Community College in Hawaii. She also received a Bachelor's Degree in Travel Industry Management from the University of Hawaii at Manoa and a Master's Degree in Business Administration from the University of Phoenix in San Diego, California USA. Her hobbies include playing volleyball and spending quality time with family.

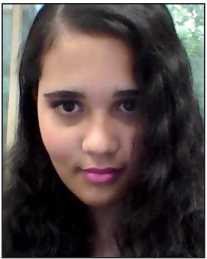
ALUMNI NOTES

ANDREA L. DEARTH

(Class of 2015)

ASSOCIATE OF SCIENCE - BUSINESS ADMINISTRATION

"Maybe nothing in this life happens by accident. As everything happens for a reason, our destiny slowly takes form." - Silvers Rayleigh (One Piece)"



Andrea recently graduated with an AS Degree in Business Administration. She plans to continue her studies in the field of education. In the future, she wants to be a teacher.



Mesekiu's News

Palau Community College

P.O. Box 9 Koror, Palau 96940

ALUMNI NOTES showcases MOC & PCC alumni who are positive role models and contribute to the quality of life in their local communities.

If you are that Alumna/Alumnus or know someone who is, please contact the PCC Development Office at telephone numbers 488-2470/2471 (extensions 251, 252, or 253).

We would like to feature you in future *Mesekiu's News* issues.

Newest Contributor to the PCC Endowment Fund



Palau Community College (PCC) would like to recognize its newest Endowment Fund contributor, Jessica Sumor. Ms. Sumor works as a Classroom Teacher for Meyuns Elementary School. Thank you, Ms. Sumor, for contributing to Palau's only institution of higher learning! Your donation will help sustain the future stability and programs of Palau Community College.

VACANCY ANNOUNCEMENT

- (1) Instructional Assistant - Construction Technology
(Academic Affairs Division)
salary range: \$8,991 - \$13,378 per annum
- (2) Nursing Instructor
(Academic Affairs Division)
salary range: \$16,010 - \$28,280 per annum
- (3) Adjunct Instructors
(Academic Affairs Division)
salary range: determined by class credits, educational level, and experience.
- (4) Financial Aid Counselor
(Student Services Division)
salary range: \$12,049 - \$20,607 per annum
- (5) Administrative Assistant
(PCC Cooperative Research & Extension)
salary range: \$10,929 - \$18,692 per annum
- (6) Admissions Counselor
(Student Services Division)
salary range: \$12,049 - \$20,607 per annum
- (7) Maintenance Technician (General)
(Physical Plant - Administration Department)
salary range: \$8,155 - \$13,948 per annum
- (8) Math Instructor
(Academic Affairs Division)
salary range: \$16,010 - \$28,280 per annum
- (9) Science Instructor
(Academic Affairs Division)
salary range: \$16,010 - \$28,280 per annum
- (10) Social Science/Humanities Instructor
(Academic Affairs Division)
salary range: \$16,010 - \$28,280 per annum
- (11) Air-Conditioning & Refrigeration Instructor
(Academic Affairs Office)
salary range: \$16,010 - \$28,280 per annum
- (12) Twenty-Five (25) Part-Time Tutors
(Talent Search Office)
salary range: \$400 - \$1,200 per annum
- (13) 2 Part-Time Math Instructors/Tutors
(Upward Bound Office)
salary range: \$100 - \$200 Biweekly
- (14) 2 Part-Time English Instructors/Tutors
(Upward Bound Office)
salary range: \$100 - \$200 Biweekly
- (15) 2 Part-Time Science Instructors/Tutors
(Upward Bound Office)
salary range: \$100 - \$200 Biweekly
- (16) 2 Part-Time Academic Instructors at BHS & BMS
(Upward Bound Office)
salary range: \$100 - \$200 Biweekly

For application forms and information, contact Harline Haruo at the **PCC Human Resources Office** at 488-2470/2471 extension 227, or e-mail: hr@palau.edu, or download forms at <http://pcc.palau.edu>.

"PCC is an Equal Opportunity Employer."

Celebrating Birthdays

Jade S. Kloulechad		October 02
Bellarmino Fagolor		October 04
Ann Sabra Ngirorou		October 06
Miano Sowraenpij		October 08

HAPPY BIRTHDAY!

PCC Endowment Fund

INVEST IN THE FUTURE

OF OUR STUDENTS, OUR COLLEGE, AND OUR NATION

TO SUPPORT, CONTACT US TODAY!

P.O. BOX 9 Koror, Palau 96940

Phone: 488-2470/2471 (ext. 251/253)

e-mail: tellei@palau.edu

If you want to join the Bi-Weekly Allotment Program, **contact us NOW!**

FIND PCC ONLINE FOR MORE INFORMATION

 <http://pcc.palau.edu>

  Palau Community College - PCC

Stamp Here