

FREE!!!

# Palau Community College



# MESEKIU'S NEWS



Friday, October 12, 2018

Weekly Newsletter

Volume 20, Issue 41

## StratoClim Research Presentation in PCC Assembly

Yoji and Junko Matsuoka Visit PCC

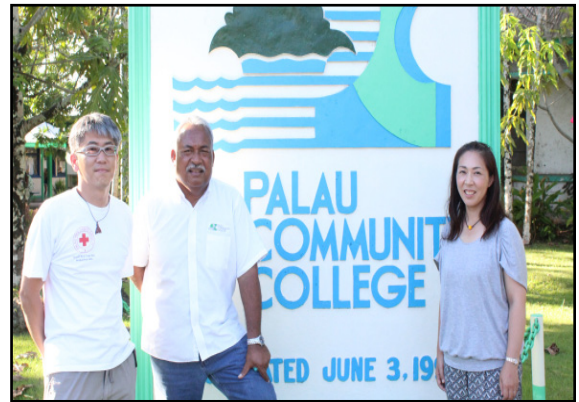


*Dr. Markus Rex giving presentation on StratoClim in PCC Assembly Hall*

On October 04, 2018 a presentation related to the atmospheric research being conducted by the StratoClim Atmospheric Observatory in Palau was held at the Assembly Hall of Palau Community College (PCC). The presentation was given by Dr. Markus Rex who is the head of Atmospheric Physics at the University of Potsdam in Germany. Attending the presentation were PCC students as well as college staff & faculty members.

During the presentation, Dr. Rex provided a brief explanation about the structure of the Earth's atmosphere, the production & destruction of ozone in the stratosphere, and the transportation of ozone from the West Pacific region to the rest of the world. He also explained how the research being conducted by the StratoClim Atmospheric Laboratory in Palau using various electronic and laser instruments to measure atmospheric constituents such as aerosol, water vapor, and other trace of gases including new Light Detection and Ranging System (LIDAR).

STRATOClim CONTINUE ON PAGE 2



*Left: Yoji Matsuoka, PCC President Patrick U. Tellei, and Junko Matsuoka*

On October 8, 2018 Mr. Yoji Matsuoka and Junko Kobayashi Matsuoka paid a courtesy visit to PCC President Patrick U. Tellei.

Mr. Yoji Matsuoka, a Japan International Cooperation Agency (JICA) Volunteer at PCC from 2004 to 2006 as an Agricultural Science instructor taught animal husbandry and even spent his free time to help detainees of Subelek Farm in Ngatpang with agricultural advice. Ms. Junko Kobayashi Matsuoka, a Japan Overseas Cooperation Volunteer (JOCV) similar to U.S. Peace Corps volunteer joined the college from 2004 to 2006 as a Japanese Language instructor. Ms. Matsuoka not only spent time in a classroom but also participated in local activities in sharing Japanese rich culture and traditions. Ms. Matsuoka continues her work with JICA doing partnership program. The couple currently spend some quality time and visiting friends and associates before leaving to Japan. PCC extends its warmest welcome to Mr. & Mrs. Matsuoka.



*Palau Community College is an accessible public educational institution helping to meet the technical, academic, cultural, social, and economic needs of students and communities by promoting learning opportunities and developing personal excellence.*

**STRATO CLIM CONTINUE FROM PAGE 1**

StratoClim research laboratory container was installed in December 17, 2015. Since then, the second research container was installed this year. According to Dr. Rex, the research program will continue until 2019 where data obtained will be used by European Researchers and local partners.

**25<sup>th</sup> National Law Enforcement Academy Graduation Ceremony**

On October 5, 2018 The cadets of 25<sup>th</sup> Law Enforcement Academy completed their 3 months of training to receive their certificate of completion in the law enforcement national training. Training participants were Levin Augusto, Shannon Tmodrang Aguon, Grady-Hal Takeo, Allen Davis Anderson, Weiden Demei, Arisei Tkel, Jeraldez Leon, Delol Casey Ikesiil, Keyanges Asanuma Bai, Dudley Ililau, Rick Mechesengel Roman, Shaquill Renguul, Abdul Marcil Omengkar, Lorenzo Travis, Kazuko Martang Oda, Lebuu Gibbons, Rechirikl Trolui, Joy Nestor, Lance Junior Taro, and Uong Junior Ngirarorou.



**PCC Financial Aids Office Hold Sessions**

On Monday, September 24 to 28, 2018 Palau Community College Financial Aids Office conducted sessions for all students receiving Federal Pell Grant.



*Inset right: Director of Financial Aids Office Dahlia Katosang and students during financial aid session*

**Faculty Senate Association Awards Fall Semester Scholarship Recipient**



On October 4, 2018 PCC Faculty Senate Association awarded 2018 Fall Semester scholarship to Ms. Zhatayen H.C. Cooper. Ms. Cooper is a Liberal Arts student who aspires to be a Physical Therapist in the near future. PCC extends its congratulation to Ms. Cooper and wish her the best.

**Special Announcement**  
***PCC Continuing Education, Pala Red Cross Society, and Ministry of Health Invite students and staff to the Care-Giver Training Ceremony.***  
***Where: Bai ra Klebeang @ Ngaraard State***  
***When: Friday, October 12, 2018***  
***Time: 6:30 p.m. - 7:30 p.m.***

## BITS AND PIECES...

### Tan Siu Lin PCC Library

#### Hours of Operation

Monday to Thursday 7:30AM - 7PM

Friday 7:30AM - 5PM

Saturday 9AM - 6PM

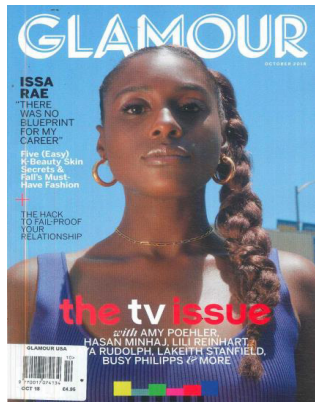
Sunday CLOSED

For more information, call:  
488-3540.

#### AVAILABLE TO INTERESTED

##### READERS:

#### GLAMOUR MAGAZINE



A Glamour magazine featuring all the hottest celebrities, the best fashion and beauty, gripping real-life stories and in-depth features. Plus, with entertainment, health, fitness, food and travel and more, Glamour is an ideal gift or a luxurious treat for anyone.

#### Academic Calendar

**October 19 (F)**

Last Day for All Withdrawals

**October 24 (W)**

Holiday: U.N. Day

#### News/Stories Wanted

*Mesekiw's News* welcomes stories/articles/announcements from students, faculty, and staff. Submission deadline is Wednesday at 4:30 p.m. in hard and/or electronic copies to [tchuziet@palau.edu](mailto:tchuziet@palau.edu) or [tchuziet@gmail.com](mailto:tchuziet@gmail.com).

Articles from MOC/PCC Alumni are also welcomed.

Please call 488-2470/2471 (extensions 251, 252, or 253) for more information.

## Newest Contributor to PCC Endowment



*Levelyne Renguul*

Palau Community College would like to recognize its newest endowment fund contributor, Ms. Levelyne Renguul. Ms. Renguul is currently employed at ARFF. Thank you Ms. Renguul for your contribution to Palau's only institution of higher learning! Your donation will help sustain the future stability and programs of Palau Community College.

## 2018-2019 PCC-BASED SCHOLARSHIPS APPLICATIONS NOW AVAILABLE!

**DAVID W. SHIPPER MEMORIAL SCHOLARSHIP**

**DEBBIE O. NGIRAI BAI SCHOLARSHIP**

**MATSON NAVIGATION COMPANY  
INC. SCHOLARSHIP**

**MOYLAN'S INSURANCE SCHOLARSHIP**

**PIERANTOZZI SCHOLARSHIP**

**PRINCE LEBU SCHOLARSHIP**

**TERRY T. NGIRMANG NURSING SCHOLARSHIP**

**PALAU  
COMMUNITY  
COLLEGE**

Applications must be submitted to the PCC Development Office by  
**Wednesday, October 31, 2018.**

APPLICATIONS ARE AVAILABLE AT THE PCC DEVELOPMENT OFFICE.  
CONTACT FOR MORE INFORMATION ABOUT THE PCC-BASED SCHOLARSHIPS:

**PCC DEVELOPMENT OFFICE**

**(TEL): 488-2470/2471 EXT. 252 OR 253**

## ANNOUNCEMENT

Show your support for the 2018 PCC Thanksgiving Endowment Fundraising Event by purchasing a \$10 Raffle Ticket! Your support will help Palau's only institution of higher learning continue to provide the much needed academic programs & training that will help sustain the future of our islands.

**2018 PCC Thanksgiving Endowment Fundraising Event will take place on Wednesday, November 21, 2018 from 11:30AM - 5PM at the PCC Mesekiu Bai**



For more information about the fundraiser, please contact the PCC Development Office at (tel): 488-2470/2471 ext. 251, 252, or 253. You may also email the PCC Director of Development Tchuziet Tadao at [tchuziet@palau.edu](mailto:tchuziet@palau.edu) or [tchuziet@gmail.com](mailto:tchuziet@gmail.com).

**SUPPORT THE 2018 PCC THANKSGIVING ENDOWMENT FUNDRAISING EVENT**

## ALUMNI NOTES

### ERIC DEFAN

ASSOCIATE OF APPLIED SCIENCE - AGRICULTURE

Eric Defan is a graduate of Palau Community College in 2013 with Associate of Applied Science in Agricultural Science. He is currently attending UOG.



## VACANCY ANNOUNCEMENT

- (1) Math Instructor/ Tutor (2)  
(PCC Upward Bound Program Office)  
depending on qualifications & hrs,  
salary ranges from \$100 - \$200 biweekly
- (2) Science Instructor/ Tutor (2)  
(PCC Upward Bound Program Office)  
depending on qualifications & hrs,  
salary ranges from \$100 - \$200 biweekly
- (3) Foreign Language Instructor/ Tutor (2)  
(PCC Upward Bound Program Office)  
depending on qualifications & hrs,  
salary ranges from \$100 - \$200 biweekly
- (4) Tourism & Hospitality Instructor  
(PCC Education and Training Department/  
Academic Affairs Division) depending on  
qualifications and work experience salary  
ranges from \$16,010 - \$28,280 per annum
- (5) Construction Technology Instructor  
depending on qualifications & work experience  
salary range: \$16,010 - \$28,280 per annum
- (6) Community and Public Health Instructor  
depending on qualifications & work experience  
salary range: \$18,009 - \$31,810 per annum
- (7) Financial Aid Counselor  
(Student Services - Office of Financial Aid)  
salary range: \$12,049 - \$20,607 per annum
- (8) Federal Work-Study Coordinator  
(Student Services - Office of Financial Aid)  
salary range: \$12,049 - \$20,607 per annum
- (9) Maintenance Technicians (4)  
(Administration Department - Physical Plant)  
salary range: \$8,155 - \$13,948 per annum
- (10) Student Activities Specialist (2)  
(Student Life - Recreation)  
salary range: \$8,155 - \$13,948 per annum
- (11) Counselor  
(PCC Student Services Division)  
salary range: \$12,653 - \$19,479 per annum
- (12) Accounting Technician (Purchase Order Technician)  
(Administration Department - Business Office)  
salary range: \$9,913 - \$16,954 per annum
- (13) Researcher/ Food Technologist  
(Cooperative Research & Extension Office)  
salary range: \$30,000 per annum
- (14) English Instructors/Tutors (2)  
Upward Bound Program  
Salary range from \$100 - \$200 Biweekly  
Depending on qualifications and hrs.

For application forms and information, contact **Human Resources Office** at 488-2470/2471 extension 227, or e-mail: [hr@palau.edu](mailto:hr@palau.edu), or download forms at <http://www.palau.edu>.

**"PCC is an Equal Opportunity Employer."**

## PCC Endowment Fund

**INVEST IN THE FUTURE**  
OF OUR STUDENTS, OUR COLLEGE, AND OUR NATION

**To SUPPORT,  
CONTACT US TODAY!**

P.O. BOX 9 Koror, Palau 96940

Phone: 488-2470/2471 (ext. 251/253)

e-mail: [tellei@palau.edu](mailto:tellei@palau.edu)

If you want to join the Bi-Weekly Allotment Program, **contact us NOW!**

FIND PCC ONLINE FOR MORE INFORMATION



<http://www.palau.edu>



Palau Community College - PCC

## Celebrating Birthdays

Sherman Daniel	Oct	15
Ligaya Sara	Oct	16
Rogelio G. Santos	Oct	17
Marianne Temaungil	Oct	18



**HAPPY BIRTHDAY!**

stamp here



Mesekiu's News

Palau Community College

P.O. Box 9 Koror, Palau 96940