

FREE!!!

# Palau Community College



# MESEKIU'S NEWS



Friday, May 31, 2019

Weekly Newsletter

Volume 21, Issue 22

## PCC Faculty Attended Integrating Technology into Teaching Training



*Inset: Instructor Crystal Nacionales and faculty during technology training*

On May 27-29, 2019 Palau Community College (PCC) Center for Teaching Excellence conducted a three-day Integrating Technology into Teaching training to all college faculty at CE training room.

The purpose of the training is to enhance participants knowledge and skills using available digital resources to support classroom learning such as downloading videos from both YouTube and TED Talks, effectively search for information online by using specific keywords, terms and quotation, connect computer to digital projector to support classroom presentations, utilizing On-Screen keyboard for quick reference and mobility of user, make use of print screen and snipping tool as a still photos, back-up files using Google Drive, and utilizing Adobe Acrobat Pro to edit and save PDF files.

This is a part 1 of the many trainings conducted by the PCC Center for Teaching Excellence Instructional Media Specialist Ms. Crystal Nacionales.

Palau Community College Academic Affairs thanks all faculty who participated in the training and Ms. Nacionales technical expertise on a user friendly approach to integrate technology into teaching to support student learning.

## WIOA Holds Summer Orientation



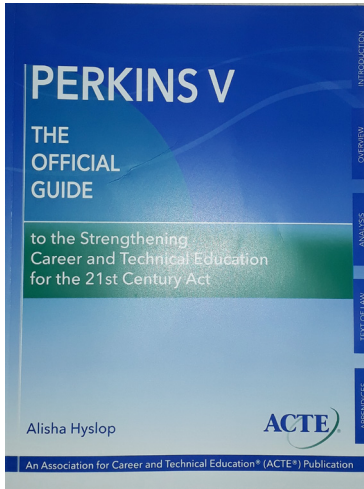
*WIOA staff during summer orientation at PCC Assembly*

On May 28, 2019 Workforce Innovation & Opportunity Act (WIOA), formerly known as Workforce Investment Act (WIA) held a summer orientation for students participating in this year's summer job training program. Over 130 students from Koror State and Babeldaob were selected based on their eligibility to participate this year's job training program.

WIOA offered programs and services to eligible adults and dislocated workers by providing career services in the three categories: Basic Career Services, Individualized Career Services, and Follow-Up Services.

WIOA Youths component provided financial literacy session, labor market and employment information about in-demand occupations available in the local areas, support activities that help youth prepare for and transition to post-secondary education and training, and educational programs in line with WIOA workforce activities for specific occupation.

## New Reference Collection at Library

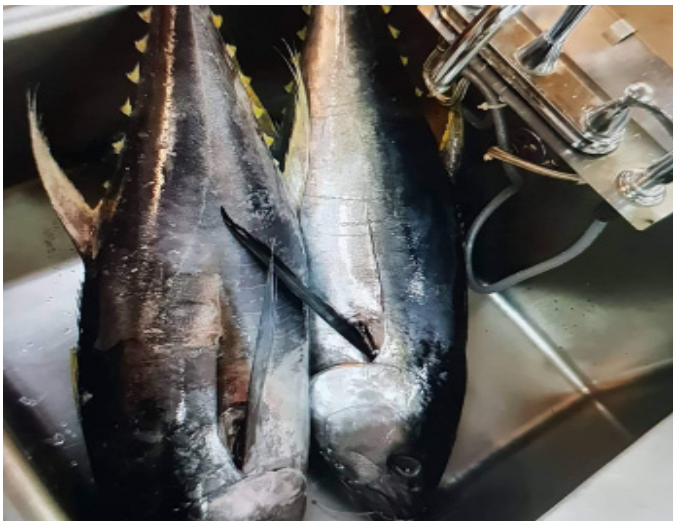


NEW !! Perkins V: The Official Guide  
by ACTE© content by Alysha Hyslop

### DESCRIPTION

The Official Guide to the Strengthening Career and Technical Education for the 21st Century Act, prepared for CTE practitioners and stakeholders seeking to better understand Perkins V, will provide comprehensive information and guidance to aid in implementation. It includes: background and overview of the new law; highlights of changes that will have the greatest impact on your programs; a complete side-by-side showing key differences between Perkins IV and Perkins V; section-by-section summary and analysis of Perkins V; summary and relevant sections of other federal legislation referenced within Perkins V for clear crosswalking including the Workforce Innovation and Opportunity Act (WIOA) and Every Student Succeeds Act (ESSA).

### Palau Tuna Inc. Donates to PCC



Palau Community College (PCC) extends its gratitude and a big thank you to Palau Tuna Inc. President Pak Yong Ye and staff for donating two 150 lbs. yellow fin tuna to PCC Cafeteria. Thank you Mr. Pak Yong Ye and PTI for your generosity.

PALAU COMMUNITY COLLEGE

**MESEKIU**

WELCOMES

ALL INTERESTED STUDENTS

SUMMER SESSION 2019

APPLICATION FOR ADMISSIONS

REGISTRATION

June 4 - 6, 2019

NEW STUDENT ORIENTATION

June 3, 2019

FIRST DAY OF INSTRUCTION

June 10, 2019

#### SCHOOL OF ARTS & SCIENCES

Agricultural Science  
Community & Public Health  
Criminal Justice  
Education:  
Early Childhood Education  
Elementary Education  
Education: Secondary Education  
Education: Special Education  
Environmental/Marine Science  
Liberal Arts  
Library & Information Services  
Nursing  
Palauan Studies  
Science, Technology, Engineering &  
Mathematics Disciplines (STEM)

#### SCHOOL OF BUSINESS

Business Accounting  
Business Administration  
Information Technology  
Office Administration  
Tourism & Hospitality:  
Food & Beverages  
Hospitality Management  
Hotel Operations  
Tour Services

#### SCHOOL OF TECHNICAL EDUCATION

Air-Conditioning & Refrigeration Technology  
Automotive Mechanics Technology  
Construction Technology  
Electrical Technology  
General Electronics Technology  
Small Engine & Outboard Marine Technology

For more information regarding enrollment, please contact Admissions & Registrar Office at 488-2470/2471 ext. 274. Working hours are 8:00 am to 5:00 pm from Monday to Friday.



\*Palau Community College is an accessible public educational institution helping to meet the technical, academic, cultural, social, and economic needs of students and communities by promoting learning opportunities and developing personal excellence.\*

PO Box 9 Koror, Palau 96940 | tel:488-2470/2471 | fax:488-2447 | official website: <http://www.palau.edu>  
Follow Us On Facebook: Palau Community College - PCC

## PCC Library Summer Activities

Children Ages 7-12

- ❖ Learning How to Search Using Online Catalog
- ❖ Scavenger Hunt (Win Prizes)
- ❖ Arts & Crafts
- ❖ Fun Math Games
- ❖ Building Vocabulary
- ❖ Memory Game



When: June 03 - 07, 2019

Time: 9 - 11 am

1 - 3 pm

Sign Up @ PCC Library before May 30, 2019

For More Information Call 488-3540 or 488-2470 Ext #230



## BITS AND PIECES...

### Tan Siu Lin PCC Library

#### Hours of Operation

Monday to Thursday 7:30AM - 7PM

Friday 7:30AM - 5PM

Saturday 9AM - 6PM

Sunday CLOSED

For more information, call:  
488-3540.

#### AVAILABLE TO INTERESTED

##### READERS:

#### SUCCESSFUL FARMING MAGAZINE



Successful Farming magazine started Meredith Corporation in 1902. Find the latest ag news, including updates on farm policy, business, machinery, and technology. This section also covers crop news for corn, soybeans, and wheat as well as livestock updates on cattle, hogs, and poultry.

#### Academic Calendar

**June 4 -6 (T-TH)**  
Registration

**June 10 (M)**  
First Day of Instruction

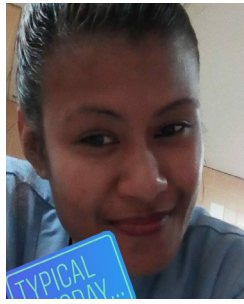
#### News/Stories Wanted

*Mesekiw's News* welcomes stories/articles/announcements from students, faculty, and staff. Submission deadline is Wednesday at 4:30 p.m. in hard and/or electronic copies to [tchuziet@palau.edu](mailto:tchuziet@palau.edu) or [tchuziet@gmail.com](mailto:tchuziet@gmail.com).

Articles from MOC/PCC Alumni are also welcomed.

Please call 488-2470/2471 (extensions 251, 252, or 253) for more information.

## Newest Contributor to the PCC Endowment Fund



*Suzette Rechebong*

Palau Community College would like to recognize our newest endowment fund contributor, Ms. Suzette Rechebong. Ms. Rechebong is currently employed with the Ministry of Health as Patient Care Assistant. Thank you Ms. Rechebong for your contribution to Palau's only institution of higher learning! Your donation will help sustain the future stability and programs of Palau Community College.



## FOLLOWING CLASSES ARE TO BE OFFERED FROM JUNE 10 - JULY 5, 2019

- 3rd to 8th Grade Singapore Math
- 3rd to 8th Grade English Reading & Writing
- 3rd to 8th Grade Palauan Orthography
- 3rd to 8th Grade Art
- 3rd to 8th Grade Music
- 6th to 8th Grade Marine Science

PCC Continuing Education offer classes that are designed to provide educational activities for students, enhance their abilities to improve in the subject areas, and foster new skills.

## VACANCY ANNOUNCEMENT

- (1) Part Time Math Instructors/ Tutors (2)  
(PCC Upward Bound Program Office)  
depending on qualifications & hrs,  
salary ranges from \$600 - \$800 biweekly
- (2) Part Time English Instructors/ Tutors (2)  
(PCC Upward Bound Program Office)  
depending on qualifications & hrs,  
salary ranges from \$600 - \$800 biweekly
- (3) Part Time Science Instructors/ Tutors (2)  
(PCC Upward Bound Program Office)  
depending on qualifications & hrs,  
salary ranges from \$600 - \$800 biweekly
- (3) Part Time Computer Science Instructors/Tutors (2)  
(PCC Upward Bound Program Office)  
depending on qualifications & hrs,  
salary ranges from \$600 - \$800 biweekly
- (5) Part Time Foreign Language Instructors/Tutors (2) @  
BHS & BMS  
(PCC Upward Bound Program Office)  
depending on qualifications & hrs,  
salary ranges from \$600 - \$800 biweekly
- (3) Tourism & Hospitality Instructor  
(PCC Education and Training Department/  
Academic Affaris Division) depending on  
qualifications and work experience salary  
ranges from \$16,010 - \$28,280 per annum
- (4) Admissions Counselor (2)  
(PCC Student Services Division-Registrar)  
salary range: \$15,542 - \$27,600 per annum
- (4) Registration & Records Specialist  
(PCC Student Services Division-Registrar)  
salary range: \$14,259 - \$25,321 per annum
- (11) Social Science/Humanities-Instructor  
(PCC Education and Training Department/  
Academic Affaris Division) depending on  
qualifications and work experience  
salary range: \$16,010 - 28,280 per annum

For application forms and information, contact Harline Haruo at the PCC  
Human Resources Office at 488-2470/2471 extension 227, or e-mail:  
[hr@palau.edu](mailto:hr@palau.edu), or download forms at <http://pcc.palau.edu>.

“PCC is an Equal Opportunity Employer.”

## ALUMNI NOTES

### REGNER U. TECHITONG

ASSOCIATE OF SCIENCE - INFORMATION TECHNOLOGY

Regner Techitong is a graduate of Palau Community College in 2017 with an Associate of Science in the Information Technology. Currently employed at WIOA as an IT staff.



## Celebrating Birthday in June 2019



Alberto Engueoung



Bradley R. Augustine



Cecilia Olikong



Crystal Nacionales



Dickson W. Noel



Evangeline Andrew



Fredrick Mascardo



Frutoso Tellei



Grace Yalap



Leonard Ngiramengior



Margeline V. Buban



Raven S. Kloulubak



Sebastian Ngiratrang



Tarmau T. Ngirmang

## PCC Endowment Fund

### INVEST IN THE FUTURE OF OUR STUDENTS, OUR COLLEGE, AND OUR NATION

To SUPPORT,  
CONTACT US TODAY!

P.O. BOX 9 Koror, Palau 96940

Phone: 488-2470/2471 (ext. 251/253)

e-mail: [tellei@palau.edu](mailto:tellei@palau.edu)

If you want to join the Bi-Weekly  
Allotment Program, contact us NOW!

FIND PCC ONLINE FOR MORE INFORMATION



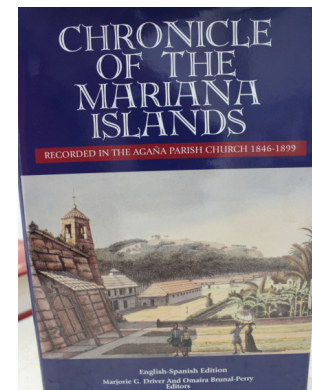
<http://www.palau.edu>



Palau Community College

AVAILABLE NOW!!

CHRONICLE OF THE MARIANA ISLANDS



TAN SIU LIN PCC LIBRARY



Uroi N. Salii



Volette S. Polloi



## Mesekiu's News

Palau Community College

P.O. Box 9 Koror, Palau 96940

**ALUMNI NOTES** showcases MOC & PCC alumni who are positive role models and contribute to the quality of life in their local communities.

If you are that Alumna/Alumnus or know someone who is, please contact the PCC Development Office at telephone numbers 488-2470/2471 (extensions 251, 252, or 253).

We would like to feature you in future *Mesekiu's News* issues.

stamp here