

FREE!!!

Palau Community College



MESEKIU'S NEWS



Friday, September 06, 2019

Weekly Newsletter

Volume 21, Issue 36

PCC President Tellei Holds Meetings with Students



PCC President Dr. Patrick U. Tellei and Dean of Students Sherman Daniel during a meeting with FSM students from RMI, Kosrae, Chuuk, and Pohnpei

From August 28-29, 2019 Palau Community College (PCC) President Dr. Patrick U. Tellei met with students from the Republic of the Marshall Islands (RMI), Kosrae, Pohnpei, Chuuk and Yap States, Federated States of Micronesia (FSM). The meetings were opportunity for PCC President Dr. Tellei to welcome both new, continuing and returning students to the 2019 Fall semester.

In his remarks, Dr. Tellei thanked the students for choosing the college as the next step in their educational pursuits. He advised the students to prioritize their studies by finding a balance between their academic and social obligations. The students were in college in order to complete their academic studies and the college was more than willing to provide the necessary assistance.

President Tellei reminded the students that peer tutoring, counseling, and research materials at PCC Library were available for their use. He advised the students to progress towards achieving their academic goals in order to contribute to the welfare and improvement of their communities.

STUDENT MEETINGS CONTINUED ON PAGE 2

AMT Students Visit Ksau Motors



PCC students in AM III visit Ksau Motors for automotive brake system demonstration

On August 29, 2019 PCC students enrolled in Automotive Mechanics Technology course "Basic Automotive Maintenance" visited Surangel & Sons Company - Ksau Motors for demonstration and practical hands on experience with automotive drive train servicing and brake system maintenance.

During the demonstration, Ksau Motors technician explained the function of Brake Lathe Machine that is used to resurface and align the wheel rotors for brake pads to make parallel contact.

Students were also learned how to identify malfunction brakes that needs immediate parts replacement.


Accompanied the students was instructional assistant Ala Lofty Ongalibang. Mr. Ongalibang thanked Ksau Motors management and staff for taking the time out of their busy schedule to accommodate PCC Automotive Mechanics students. PCC also extends its appreciation to Surangel & Sons Company for supporting our students.

EN 219 Guest Speaker Ngiraingas



Students in English 219 “ Research Methods/ Field Ethnography” were immersed by the guest speaker Madelsar Ngiraingas as she shared her experience in research methodologies while working on her doctoral dissertation with the University of California-San Diego.

HAPPY 25TH
INDEPENDENCE DAY,
PALAU!



from the Palau Community
College Board of Trustees,
President, Faculty, Staff,
and Students.

STUDENT MEETINGS CONTINUED FROM PAGE 1

Students were reminded that PCC President Dr. Tellei’s door is always open to any person who may have concerns regarding their educational journey at the college. PCC is committed to helping each of its student achieve the highest success in their academic studies and the college staff is more than willing to provide the necessary assistance. On Friday August 30, 2019 PCC Vice President of Administration & Finance met with Palauan students and encouraged them to take one step ahead by completing their academic assignments before socializing and entertainment. These meetings are arranged by the Dean of Students for students to learn about the expectations that must be met while attending the college.



Yap students with PCC President Tellei and Dean Sherman Daniel



Palau students with Vice President of Admin. & Finance Jay Olegeriil and Dean Sherman Daniel

Announcing

SAN DIEGO STATE UNIVERSITY

Master’s Degree Program

SDSU Master’s Degree Program

Master of Arts in Education with Concentration in Post-Secondary Education Leadership and Specialization in Public Administration and Human Resources Development

STARTING FALL 2020



If you are interested please contact Dean Sherman Daniel @ PCC Student Services Division - 488-2470/1 ext. 269 or email: sherman@palau.edu

Show your support for the 2019 PCC Thanksgiving Endowment Fundraising Event by purchasing a \$10 Raffle Ticket! Your support will help Palau’s only institution of higher learning continue to provide the much needed academic programs & training that will help sustain the future of our islands.

2019 PCC Thanksgiving Endowment Fundraising Event will take place on Wednesday, November 27, 2019 from 12PM - 5PM at the PCC Mesekiu Bai

For more information about the fundraiser, please contact the PCC Development Office at (tel): 488-2470/2471 ext. 251, 252, or 253. You may also contact the PCC Director of Development Tchuziet Tadao at (email): tchuziet@palau.edu or tchuziet@gmail.com.



SUPPORT THE 2019 PCC THANKSGIVING ENDOWMENT FUNDRAISING EVENT

BITS AND PIECES...

Tan Siu Lin PCC Library

Hours of Operation

Monday to Thursday 7:30AM - 7PM

Friday 7:30AM - 5PM

Saturday 9AM - 6PM

Sunday CLOSED

For more information, call:
488-3540.

AVAILABLE TO INTERESTED

READERS:

bon appe'tit MAGAZINE



bon appe'tit magazine is a goldmine of information on numerous issues related to food and entertainment magazines since it was first published in 1956. You will also find recipes for chicken dishes, desserts, as well as vegetarian plates

Academic Calendar

September 20 (F)

Last Day to Remove Incomplete Grades for Summer 2019

News/Stories Wanted

Mesekiu's News welcomes stories/articles/announcements from students, faculty, and staff. Submission deadline is Wednesday at 4:30 p.m. in hard and/or electronic copies to tchuziet@palau.edu or tchuziet@gmail.com.

Articles from MOC/PCC Alumni are also welcomed.

Please call 488-2470/2471 (extensions 251, 252, or 253) for more information.

Newest Contributor to the PCC Endowment Fund



Rebecca Ngirngbedangel

Palau Community College would like to recognize our newest endowment fund contributor, Ms. Rebecca Ngirngbedangel. Ms. Ngirngbedangel is currently employed at Ministry of Justice (MOJ) - . Thank you Ms. Ngirngbedangel for your contribution to Palau's only institution of higher learning! Your donation will help sustain the future stability and programs of Palau Community College.

2019-2020 PCC-BASED SCHOLARSHIPS APPLICATIONS NOW AVAILABLE!

DAVID W. SHIPPER MEMORIAL SCHOLARSHIP

DEBBIE O. NGIRAIBAI SCHOLARSHIP

MATSON NAVIGATION COMPANY
INC. SCHOLARSHIP

MOYLAN'S INSURANCE SCHOLARSHIP

PIERANTOZZI SCHOLARSHIP

PRINCE LEBUU SCHOLARSHIP

TERRY T. NGIRMANG NURSING SCHOLARSHIP

Applications must be submitted to the PCC Development Office by
Thursday, October 31, 2019.

APPLICATIONS ARE AVAILABLE AT THE PCC DEVELOPMENT OFFICE.
CONTACT FOR MORE INFORMATION ABOUT THE PCC-BASED SCHOLARSHIPS:

PCC DEVELOPMENT OFFICE

(TEL): 488-2470/2471 EXT. 252 OR 253

VACANCY ANNOUNCEMENT

- (1) Part Time Math Instructors/ Tutors (2)
(PCC Upward Bound Program Office)
depending on qualifications & hrs,
salary ranges from \$600 - \$800 biweekly
- (2) Part Time English Instructors/ Tutors (2)
(PCC Upward Bound Program Office)
depending on qualifications & hrs,
salary ranges from \$600 - \$800 biweekly
- (3) Part Time Science Instructors/ Tutors (2)
(PCC Upward Bound Program Office)
depending on qualifications & hrs,
salary ranges from \$600 - \$800 biweekly
- (4) Part Time Computer Science Instructors/Tutors (2)
(PCC Upward Bound Program Office)
depending on qualifications & hrs,
salary ranges from \$600 - \$800 biweekly
- (5) Admissions Counselor
(PCC Student Services Division-Registrar)
salary range: \$15,542 - \$27,600 per annum
- (6) Library Assistant
(PCC Education & Training Department) depending on
qualifications and work experience. salary range: \$7,800
- 13,582 per annum
- (7) Social Science/Humanities-Instructor
(PCC Education and Training Department/
Academic Affairs Division) depending on
qualifications and work experience
salary range: \$16,010 - 28,280 per annum

For application forms and information, contact Harline Haruo at the PCC
Human Resources Office at 488-2470/2471 extension 227, or e-mail:
hr@palau.edu, or download forms at <http://pcc.palau.edu>.

“PCC is an Equal Opportunity Employer.”

ALUMNI NOTES

LEE ROTH WILHELM

ASSOCIATE OF APPLIED SCIENCE - AUTOMOTIVE
MECHANICS TECHNOLOGY
Lee Roth Wilhelm
graduated from Palau
Community College in
2019 with an Associ-
ate of Applied Science
degree in Automotive
Mechanics Technology.
Mr. Wilhelm is currently
working at Koror State
Government



Mesekiu's News

Palau Community College

P.O. Box 9 Koror, Palau 96940

ALUMNI NOTES showcases MOC & PCC alumni who are positive role models and contribute to the quality of life in their local communities.

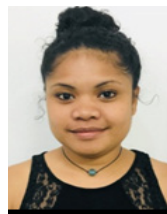
If you are that Alumna/Alumnus or know someone who is, please contact the PCC Development Office at telephone numbers 488-2470/2471 (extensions 251, 252, or 253).

We would like to feature you in future *Mesekiu's News* issues.

**Celebrating Birthday
in September 2019**



Cecil E. Meteolechol



Courtney T. Joshua



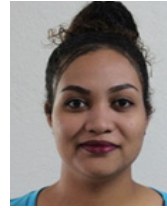
Dahlia M. Katosang



Hedrick W. Kual



Howard M. Charles



Janyssa T. Ford



Miguel DeLos Santos



Rogelio Vergara

PCC Endowment Fund

INVEST IN THE FUTURE
OF OUR STUDENTS, OUR COLLEGE, AND OUR NATION

**To SUPPORT,
CONTACT US TODAY!**

P.O. BOX 9 Koror, Palau 96940

Phone: 488-2470/2471 (ext. 251/253)

e-mail: tellei@palau.edu

If you want to join the Bi-Weekly Allotment Program, contact us NOW!

FIND PCC ONLINE FOR MORE INFORMATION

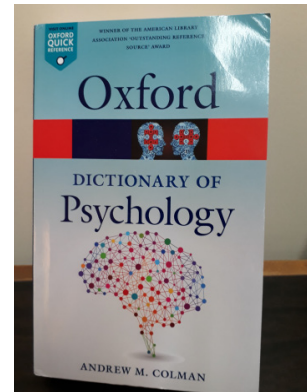


<http://www.palau.edu>



Palau Community College

***New Reference Material
Available at PCC Library***



New Arrival! PCC Library had acquired Oxford Dictionary of Psychology to its Reference Collection.

***Palau Community College will
be hosting this year's 9-11
Memorial Service @ PCC
Assembly Hall beginning at
6 p.m.***

***ALL ARE INVITED TO
JOIN US!***

stamp here