

FREE!!!

Palau Community College



MESEKIU'S NEWS



Friday, September 13, 2019

Weekly Newsletter

Volume 21, Issue 37

PCC Hosted 9-11 Memorial Service



Inset: PCC Vice President of Administration & Finance, President of US Armed Forces Veterans Association of Palau, and Ambassador Extraordinary & Plenipotentiary, US Embassy in Palau, and PCC Music Club

Palau Community College (PCC) hosted a 9-11 Memorial Service on the evening of Wednesday, September 11, 2019. Guests were invited to join in remembering and honoring those who sacrificed their lives to safeguard world peace. Held at the PCC Assembly Hall, this was the eighteenth 9-11 Memorial Service hosted by the college. Honored Guests included PCC Board of Trustee Masa-Aki N. Emesiochl, PCC Vice President of Administration & Finance Jay Olegeriil, Ambassador of the United States of America to the Republic of Palau Her Excellency Amy J. Hyatt and staff, Pastor John Clapp, members of the Civic Action Team (CAT) serving in Palau, President of US Armed Forces Veterans Association of Palau Greg Ngirmang, parents of the Palauan soldiers who had dedicated their lives to the fight against terrorism, and members of the community.

Present to grace the occasion were PCC Music Club performing praise songs and hymns and Palau and U.S. National Anthems. This year's memorial service Mistress of Ceremony was PCC Tourism & Hospitality instructor Janelle I. Blesam.

9-11 CONTINUED ON PAGE 2

PCC STAFF PARTICIPATED IN THE MICRONESIA-WIDE CLEANUP DAY



PCC staff during the Micronesian Clean Up Day at Taoch ra Idererach

On Friday, September 13, 2019 Palau Community College staff joined the Republic of Palau for the Micronesia-wide Cleanup Day. The August 27, 2019 Republic of Palau President signed Proclamation 19-271 designating September 13, 2019 as the Micronesia-wide Cleanup Day in Palau. Micronesian Leaders during their 24th Micronesian Islands Forum in Chuuk recognized the increase of trash on land and coastal debris which ROP President Tommy E. Remengesau Jr. urged the people of Palau and all ministries and non profit organizations including PCC to join in this mass effort to clean up our homes, communities, our land, and our sea.

PCC took proactive measure and organized their staff for the day's clean up on its coastal area starting from Taoch ra Idererach. PCC offers a big THANK YOU to all who participated.


25th Independence Day Committee



Members of the college 24th ROP Independence Day Committee are meeting regularly to plan and organize activities for PCC to participate in the Republic of Palau Independence Day. As member of our community, PCC will participate in the parade and the canoe race event. PCC faculty, staff and student are encourage to participate. Those interested are asked to be at the National Track & Field parking lot at 1:00 pm on Sunday, September 22, 2019

HAPPY 25TH INDEPENDENCE DAY, PALAU!

from the Palau Community College Board of Trustees, President, Faculty, Staff, and Students.



Announcing

SAN DIEGO STATE UNIVERSITY

Master's Degree Program

SDSU Master's Degree Program

Master of Arts in Education with Concentration in Post-Secondary Education Leadership and Specialization in Public Administration and Human Resources Development

STARTING FALL 2020



If you are interested please contact Dean Sherman Daniel @ PCC Student Services Division - 488-2470/1 ext. 269 or email: sherman@palau.edu

9-11 CONTINUED FROM PAGE 1



Vice President Olegeriil and Ambassador Amy J. Hyatt



President of USAFVP Greg Ngirmang during 9-11 guest book signing



Beouch Demei Obakrairur signing 9-11 guest book

Show your support for the 2019 PCC Thanksgiving Endowment Fundraising Event by purchasing a \$10 Raffle Ticket! Your support will help Palau's only institution of higher learning continue to provide the much needed academic programs & training that will help sustain the future of our islands.

2019 PCC Thanksgiving Endowment Fundraising Event will take place on Wednesday, November 27, 2019 from 12PM - 5PM at the PCC Mesekiu Bai

For more information about the fundraiser, please contact the PCC Development Office at (tel): 488-2470/2471 ext. 251, 252, or 253. You may also contact the PCC Director of Development Tchuzie Tadao at (email): tchuziet@palau.edu or tchuziet@gmail.com.

SUPPORT THE 2019 PCC THANKSGIVING ENDOWMENT FUNDRAISING EVENT

BITS AND PIECES...

Tan Siu Lin PCC Library

Hours of Operation

Monday to Thursday 7:30AM - 7PM

Friday 7:30AM - 5PM

Saturday 9AM - 6PM

Sunday CLOSED

For more information, call:
488-3540.

AVAILABLE TO INTERESTED

READERS:

COMMUNITY COLLEGE JOURNAL



Community College Journal articles examine in-depth trends, problems and solutions, innovations, new technologies, and new ideas in higher education. The Journal avoids articles on empirical research and favors essays offering an objective look at problems and solutions of contemporary community colleges.

Academic Calendar

September 20 (F)

Last Day to Remove Incomplete Grades for
Summer 2019

News/Stories Wanted

Mesekiw's News welcomes stories/articles/announcements from students, faculty, and staff. Submission deadline is Wednesday at 4:30 p.m. in hard and/or electronic copies to tchuziet@palau.edu or tchuziet@gmail.com.

Articles from MOC/PCC Alumni are also welcomed.

Please call 488-2470/2471 (extensions 251, 252, or 253) for more information.

Newest Contributor to the PCC Endowment Fund



Luna Dlutaoch

Palau Community College would like to recognize our newest endowment fund contributor, Ms. Luna Dlutaoch. Ms. Dlutaoch is currently employed at Ministry of Health (MOH) - . Thank you Ms. Dlutaoch for your contribution to Palau's only institution of higher learning! Your donation will help sustain the future stability and programs of Palau Community College.

2019-2020 PCC-BASED SCHOLARSHIPS APPLICATIONS NOW AVAILABLE!

DAVID W. SHIPPER MEMORIAL SCHOLARSHIP

DEBBIE O. NGIRAIBAI SCHOLARSHIP

MATSON NAVIGATION COMPANY INC. SCHOLARSHIP

MOYLAN'S INSURANCE SCHOLARSHIP

PIERANTOZZI SCHOLARSHIP

PRINCE LEBUU SCHOLARSHIP

TERRY T. NGIRMANG NURSING SCHOLARSHIP

Applications must be submitted to the PCC Development Office by
Thursday, October 31, 2019.

APPLICATIONS ARE AVAILABLE AT THE PCC DEVELOPMENT OFFICE.
CONTACT FOR MORE INFORMATION ABOUT THE PCC-BASED SCHOLARSHIPS:

PCC DEVELOPMENT OFFICE

(TEL): 488-2470/2471 EXT. 252 OR 253

VACANCY ANNOUNCEMENT

- (1) Part Time Math Instructors/ Tutors (2)
(PCC Upward Bound Program Office)
depending on qualifications & hrs,
salary ranges from \$600 - \$800 biweekly
- (2) Part Time English Instructors/ Tutors (2)
(PCC Upward Bound Program Office)
depending on qualifications & hrs,
salary ranges from \$600 - \$800 biweekly
- (3) Part Time Science Instructors/ Tutors (2)
(PCC Upward Bound Program Office)
depending on qualifications & hrs,
salary ranges from \$600 - \$800 biweekly
- (4) Part Time Computer Science Instructors/Tutors (2)
(PCC Upward Bound Program Office)
depending on qualifications & hrs,
salary ranges from \$600 - \$800 biweekly
- (5) Admissions Counselor
(PCC Student Services Division-Registrar)
salary range: \$15,542 - \$27,600 per annum
- (6) Library Assistant
(PCC Education & Training Department) depending on
qualifications and work experience. salary range: \$7,800
- 13,582 per annum
- (7) Social Science/Humanities-Instructor
(PCC Education and Training Department/
Academic Affairs Division) depending on
qualifications and work experience
salary range: \$16,010 - 28,280 per annum

For application forms and information, contact Harline Haruo at the PCC
Human Resources Office at 488-2470/2471 extension 227, or e-mail:
hr@palau.edu, or download forms at <http://pcc.palau.edu>.

“PCC is an Equal Opportunity Employer.”

ALUMNI NOTES

CRANE B. MOSES

ASSOCIATE OF ARTS - LIBERAL ARTS

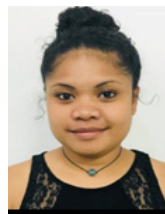
Crane B. Moses graduated from Palau Community College in 2018 with an Associate of Arts in Liberal Arts Program. Mr. Moses is currently attending Eastern Oregon University.



Celebrating Birthday in September 2019



Cecil E. Meteolechol



Courtney T. Joshua



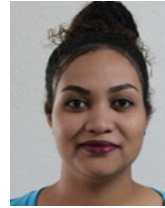
Dahlia M. Katosang



Hedrick W. Kual



Howard M. Charles



Janyssa T. Ford



Miguel DeLos Santos



Rogelio Vergara

PCC Endowment Fund

INVEST IN THE FUTURE
OF OUR STUDENTS, OUR COLLEGE, AND OUR NATION

**To SUPPORT,
CONTACT US TODAY!**

P.O. BOX 9 Koror, Palau 96940

Phone: 488-2470/2471 (ext. 251/253)

e-mail: tellei@palau.edu

If you want to join the Bi-Weekly
Allotment Program, contact us NOW!

FIND PCC ONLINE FOR MORE INFORMATION

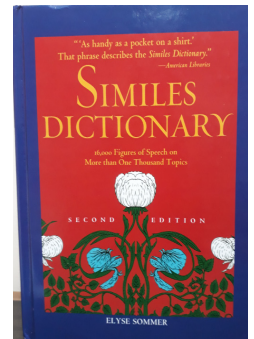


<http://www.palau.edu>



Palau Community College

New Reference Material Available at PCC Library



New Arrival! PCC Library had acquired Guinness World Records 2019 and Similes Dictionary to its Reference Collection.



Mesekiu's News

Palau Community College

P.O. Box 9 Koror, Palau 96940

ALUMNI NOTES showcases MOC & PCC alumni who are positive role models and contribute to the quality of life in their local communities.

If you are that Alumna/Alumnus or know someone who is, please contact the PCC Development Office at telephone numbers 488-2470/2471 (extensions 251, 252, or 253).

We would like to feature you in future *Mesekiu's News* issues.

stamp here