

FREE!!!

# Palau Community College



# MESEKIU'S NEWS



Friday, September 20, 2019

Weekly Newsletter

Volume 21, Issue 38

## ASPCC Swearing-In & Induction Ceremony



*The newly inducted student trustee and senators of the Associated Students of Palau Community College (ASPCC)*

A swearing-in & induction ceremony for the new officers of the Associated Students of Palau Community College (ASPCC) took place at the PCC Assembly Hall on Thursday, September 19, 2019. Present to commemorate the newly elected officers and student trustee was an audience of proud friends, fellow students, and families. PCC Student Trustee Kirah I. Rebelkuul, PCC President Dr. Patrick U. Tellei, Dean of Students Sherman Daniel, and members of the PCC staff were also present to witness the swearing-in of the new student officers.

The ceremony began with welcoming remarks from PCC President Dr. Patrick U. Tellei. In his welcoming remarks, President Tellei congratulated the newly elected officers. He shared the different types of leadership roles and explained how each role is important for different situations. To the elected senators, President Tellei advised them to get to know each member and work together to support student learning and activities. The new ASPCC officers and student trustee were then sworn into their offices by the outgoing Student Trustee Kirah I. Rebelkuul.

ASPCC CONTINUED ON PAGE 2

## PCC CONDUCTED EMERGENCY PREPAREDNESS DRILL



*PCC Dorm Manager Ephraim Ngirachitei and students during the emergency preparedness drill*



*National Health Care Coalition briefing before the emergency drill*

On Wednesday, September 18, 2019 Palau Community College (PCC) in collaboration with the National Health Care Coalition and in conjunction with the National Emergency Preparedness month (September) conducted an unannounced fire evacuation drill at PCC residential halls.

Palau Community College currently has an Emergency Operation Plan which contains processes and steps taken when emergencies and disasters occurs.

Likewise, the emergency drill is part of the college plan in place to assist both students and staff in case of emergency or disaster to evacuate accordingly. PCC thank the partnering government and non government agencies for their assistance.

## 2019-2021 FSA Officers



Johvanna Yaoch  
President



Suzette G. Hinojales  
Vice President



Frederick Mascardo  
Treasurer



Derbei Meyar  
Secretary

**HAPPY 25<sup>TH</sup>  
INDEPENDENCE DAY,  
PALAU!**

from the Palau Community  
College Board of Trustees,  
President, Faculty, Staff,  
and Students.



*Announcing*  
SAN DIEGO STATE UNIVERSITY  
*Master's Degree Program*



**SDSU Master's Degree Program**  
Master of Arts in Education with Con-  
centration in Post-Secondary Education  
Leadership and Specialization in Public  
Administration and Human Resources  
Development

**STARTING  
FALL 2020**



If you are interested please contact Dean Sherman Daniel @ PCC Student Services  
Division - 488-2470/1 ext. 269 or email: [sherman@palau.edu](mailto:sherman@palau.edu)

## ASPCC CONTINUED FROM PAGE 1

The Oath of Offices were followed by the brief remarks of ASPCC President JB Mad Victorino. In his remarks, ASPCC President Victorino thanked everyone for their support and especially the students who participated in the recent ASPCC election. He is confident that the new ASPCC officers and senators will find a way to uphold the well-being of the entire student body and activities to foster lifelong learning opportunities.

The elected student officers and senators are sworn to uphold the ASPCC constitution and by-laws in order to serve the best interest of the students. The student trustee, as an officer of the national government, is sworn to uphold the constitution and laws of the Republic of Palau in order to dispense his responsibilities as a full-fledge members of the governing board of the college.

### 2019-2020 ASPCC INDUCTEES

Student Trustee		Kobe Moses
	<i>ASPCC Officers</i>	
President		JB Mad Victorino
President Elect		Maura Ngirmechaet
Secretary		Kaitlin Ordiil Isalias
Treasurer		Minelli-Rain Olkeriil
	<i>ASPCC Senators</i>	
Chuuk Student Organization President		Benjamin Buliche
Marshall Islands Student Organization President		Maynard Milne
Palau Student Organization President		Dilngar F. Shiro
Pohnpei Student Organization President		Danny Anson
Yap Student Organization President		Raymond Fal
Sophomore Representative:		Tyula Kora Temarsel Jose Thomas
Freshman Representative:		Ikisang Jareece Teltuul Joyah Ngiraiwet

Show your support for the 2019 PCC Thanksgiving Endowment Fundraising Event by purchasing a \$10 Raffle Ticket! Your support will help Palau's only institution of higher learning continue to provide the much needed academic programs & training that will help sustain the future of our islands.

**2019 PCC Thanksgiving Endowment Fundraising Event will take place on Wednesday, November 27, 2019 from 12PM - 5PM at the PCC Mesekiu Bai**

For more information about the fundraiser, please contact the PCC Development Office at (tel): 488-2470/2471 ext. 251, 252, or 253. You may also contact the PCC Director of Development Tchuzie Tadao at (email): [tchuziet@palau.edu](mailto:tchuziet@palau.edu) or [tchuziet@gmail.com](mailto:tchuziet@gmail.com).



**SUPPORT THE 2019 PCC THANKSGIVING  
ENDOWMENT FUNDRAISING EVENT**



## BITS AND PIECES...

### Tan Siu Lin PCC Library

#### Hours of Operation

Monday to Thursday 7:30AM - 7PM

Friday 7:30AM - 5PM

Saturday 9AM - 6PM

Sunday CLOSED

For more information, call:  
488-3540.

#### AVAILABLE TO INTERESTED

##### READERS:

#### COMMUNITY COLLEGE WEEK



Community College Week wants to hear your views on our news stories, feature articles and guest opinion columns, as well as other matters affecting two-year institutions. In our Point of View section, education professionals find a forum to discuss and debate today's issues facing community, technical and junior colleges.

#### Academic Calendar

**Sept 30 - Oct 4**  
Mid-Term Period

**October 1 (T)**  
Holiday: Independence Day

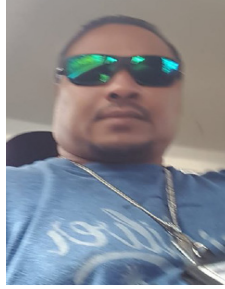
#### News/Stories Wanted

*Mesekiw's News* welcomes stories/articles/announcements from students, faculty, and staff. Submission deadline is Wednesday at 4:30 p.m. in hard and/or electronic copies to [tchuziet@palau.edu](mailto:tchuziet@palau.edu) or [tchuziet@gmail.com](mailto:tchuziet@gmail.com).

Articles from MOC/PCC Alumni are also welcomed.

Please call 488-2470/2471 (extensions 251, 252, or 253) for more information.

## Newest Contributor to the PCC Endowment Fund



*Steven Skilang*

Palau Community College would like to recognize our newest endowment fund contributor, Mr. Steven Skilang. Mr. Skilang is currently employed at Koror State Government. Thank you Mr. Skilang for your contribution to Palau's only institution of higher learning! Your donation will help sustain the future stability and programs of Palau Community College.

### 2019-2020 PCC-BASED SCHOLARSHIPS APPLICATIONS NOW AVAILABLE!

**DAVID W. SHIPPER MEMORIAL SCHOLARSHIP**

**DEBBIE O. NGIRAIBAI SCHOLARSHIP**

**MATSON NAVIGATION COMPANY  
INC. SCHOLARSHIP**

**MOYLAN'S INSURANCE SCHOLARSHIP**

**PIERANTOZZI SCHOLARSHIP**

**PRINCE LEBUU SCHOLARSHIP**

**TERRY T. NGIRMANG NURSING SCHOLARSHIP**

Applications must be submitted to the PCC Development Office by  
**Thursday, October 31, 2019.**

APPLICATIONS ARE AVAILABLE AT THE PCC DEVELOPMENT OFFICE.  
CONTACT FOR MORE INFORMATION ABOUT THE PCC-BASED SCHOLARSHIPS:

**PCC DEVELOPMENT OFFICE**

**(TEL): 488-2470/2471 EXT. 252 OR 253**

**VACANCY ANNOUNCEMENT**

- (1) Part Time Math Instructors/ Tutors (2)  
(PCC Upward Bound Program Office)  
depending on qualifications & hrs,  
salary ranges from \$600 - \$800 biweekly
- (2) Part Time English Instructors/ Tutors (2)  
(PCC Upward Bound Program Office)  
depending on qualifications & hrs,  
salary ranges from \$600 - \$800 biweekly
- (3) Part Time Science Instructors/ Tutors (2)  
(PCC Upward Bound Program Office)  
depending on qualifications & hrs,  
salary ranges from \$600 - \$800 biweekly
- (4) Part Time Computer Science Instructors/Tutors (2)  
(PCC Upward Bound Program Office)  
depending on qualifications & hrs,  
salary ranges from \$600 - \$800 biweekly
- (5) Admissions Counselor  
(PCC Student Services Division-Registrar)  
salary range: \$15,542 - \$27,600 per annum
- (6) Library Assistant  
(PCC Education & Training Department) depending on  
qualifications and work experience. salary range: \$7,800  
- 13,582 per annum
- (7) Social Science/Humanities-Instructor  
(PCC Education and Training Department/  
Academic Affairs Division) depending on  
qualifications and work experience  
salary range: \$16,010 - 28,280 per annum

For application forms and information, contact Harline Haruo at the PCC  
Human Resources Office at 488-2470/2471 extension 227, or e-mail:  
[hr@palau.edu](mailto:hr@palau.edu), or download forms at <http://pcc.palau.edu>.

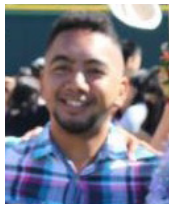
**“PCC is an Equal Opportunity Employer.”**

**ALUMNI NOTES**

**NELSON JR. MASANG**

ASSOCIATE OF ARTS - LIBERAL ARTS

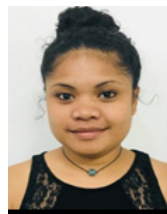
Nelson Jr. Masang graduated from Palau Community College in 2016 with an Associate of Arts in Liberal Arts Program. Mr. Masang is currently attending University of Hawaii at Manoa.



**Celebrating Birthday  
in September 2019**



*Cecil E. Meteolechol*



*Courtney T. Joshua*



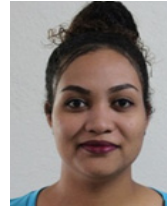
*Dahlia M. Katosang*



*Hedrick W. Kual*



*Howard M. Charles*



*Janyssa T. Ford*



*Miguel DeLos Santos*



*Rogelio Vergara*

**PCC Endowment Fund**

**INVEST IN THE FUTURE**  
OF OUR STUDENTS, OUR COLLEGE, AND OUR NATION

**To SUPPORT,  
CONTACT US TODAY!**

P.O. BOX 9 Koror, Palau 96940

Phone: 488-2470/2471 (ext. 251/253)

e-mail: [tellei@palau.edu](mailto:tellei@palau.edu)

If you want to join the Bi-Weekly Allotment Program, contact us NOW!

FIND PCC ONLINE FOR MORE INFORMATION



<http://www.palau.edu>



Palau Community College

***PCC Cooperative Research  
& Extension (CRE) Donated  
Books to Library***



PCC Library thanked CRE for donating organic agriculture books to its general collection.



*Mesekiu's News*

Palau Community College

P.O. Box 9 Koror, Palau 96940

**ALUMNI NOTES**

showcases MOC & PCC alumni who are positive role models and contribute to the quality of life in their local communities.

If you are that Alumna/Alumnus or know someone who is, please contact the PCC Development Office at telephone numbers 488-2470/2471 (extensions 251, 252, or 253).

We would like to feature you in future *Mesekiu's News* issues.

stamp here