

FREE!!!

Palau Community College



MESEKIU'S NEWS



Friday, September 27, 2019

Weekly Newsletter

Volume 21, Issue 39

2019 - 2020 ASPCC Officers & Senators



Student Trustee
Kobe Moses



ASPCC President
JB Mad Victorino



President-Elect
Maura Ngirmechaet



Secretary
Kaitlin O. Isalias



Sophomore Rep.
Jose Thomas



Sophomore Rep.
Tyula Kora Temarsel



Treasurer
Minelli-Rain Olkeriil



Freshmen Rep.
Ikisang J. Teltuul



Freshmen Rep.
Joyah Ngiraiwet

PCC PARTICIPATES IN THE 25th INDEPENDENCE ANNIVERSARY PARADE



Palau Community College students, staff, and faculty participated in the parade in celebration of Palau's independence

On Sunday, September 22, 2019 Palau Community College (PCC) students, staff, and faculty showed up to support the Palau's 25th Independence Anniversary by participating in the national parade which began at Palasia Hotel and concluded at Ernguul Park.

Over seventy students, staff, faculty and family members gathered at PCC Cafeteria parking lot for briefing, logistical preparation and refreshment prior to the final formation. Also participated in the parade were Koror State Government, Baseball Team Palau (18 and under), Ngardmau State Gov't, Aimeliik State Gov't, U.S. Marines and Civic Action Team of Palau, and various non government organizations.

PCC thanks everyone for taking the time to join us in this momentous occasion to celebrate Palau 25 years of independence.

The annual Associated Students of Palau Community College (ASPCC) elections was held on Wednesday, September 11, 2019. One hundred eighteen students exercised their voting right while twelve students, including representatives for the Palau Student Organization and Student Trustee nominees, submitted their names for the ballot. Each student organization held individual elections for their organization leader.

PCC congratulates all the newly elected officers for 2019-2020 and wishes them all the best of luck as they assume their roles as student leaders for the new school year.

ASPCC CONTINUED ON PAGE 2

PCC FEATURES U.S. CONSTITUTION FILMS AT ASSEMBLY HALL



On September 17, 2019 Palau Community College Academic Affairs featured four documentary films about the U.S. Constitution. PCC students and faculty were given the opportunity to attend as part of their class learning activity.

HAPPY 25TH INDEPENDENCE DAY, PALAU!

from the Palau Community College Board of Trustees, President, Faculty, Staff, and Students.

Announcing
SAN DIEGO STATE UNIVERSITY
Master's Degree Program

STARTING FALL 2020

SDSU Master's Degree Program
Master of Arts in Education with Concentration in Post-Secondary Education Leadership and Specialization in Public Administration and Human Resources Development

If you are interested please contact Dean Sherman Daniel @ PCC Student Services Division - 488-2470/1 ext. 269 or email: sherman@palau.edu

ASPCC CONTINUED FROM PAGE 1



Palau Student Pres.
Dilngar F. Shiro



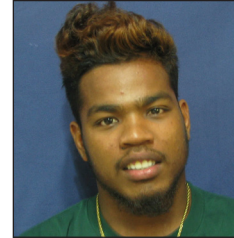
Yap Student Pres.
Raymon Fal



Chuuk Student Pres.
Benjamin Buliche



Pohnpei Student Pres.
Danny Anson



Marshall Islands Student Pres.
Maynard Milne



Kosrae Student Pres.
Kilafwakun Tulensru

ASPCC/ Student Trustee General Election Result

Student Trustee			
	Freshmen Votes	Sophomore Votes	Total Votes
Kobe Moses	46	13	59
Eoghan O. Ngirudelsang	42	15	57
<i>Write In:</i>			
JB Victorino	1		1
Dilungil Shiro		1	1
President - Elect			
Macaulay B. Uehara	32	20	52
Maura Ngirmechaet	54	10	64
<i>Write in:</i>			
Vince Stark	1		1
Kiva Remeliik	1		1
Kobe Reklai	1		1
Secretary			
Almira U. Wong	30	6	36
Dicaprio Siksei	26	4	30
Kaitlin O. Isalias	27	14	41
<i>Write in:</i>			
Ikellau Uro	6	2	8
Kenneth Buncal		1	1
Treasurer			
Minelli-Rain Olkeriil	86	24	110
<i>Write in:</i>			
Ikellau Uro	1		1
Kaitlin O. Isalias	1		1
Brandon Mengloi		1	1
Freshmen Representatives		Total Votes	
Alfonso Diagro		23	
Ikisang J. Teltuul		47	
Joyah Ngiraiwet		60	
Leeman Ngedebuu		44	
<i>Write in:</i>			
Liam Filibert		1	
Mitchell Mamis		1	

BITS AND PIECES...

Tan Siu Lin PCC Library

Hours of Operation

Monday to Thursday 7:30AM - 7PM

Friday 7:30AM - 5PM

Saturday 9AM - 6PM

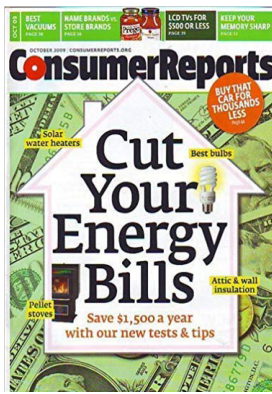
Sunday CLOSED

For more information, call:
488-3540.

AVAILABLE TO INTERESTED

READERS:

CONSUMER REPORTS



Consumer Reports provides a broad media information using online, print and TV format, It also provided information for consumers via expert-driven product reviews, award-winning investigative journalism, trusted consumer guidance, and reporting on the regulatory and safety rules and standards.

Academic Calendar

Sept 30 - Oct 4
Mid-Term Period

October 1 (T)
Holiday: Independence Day

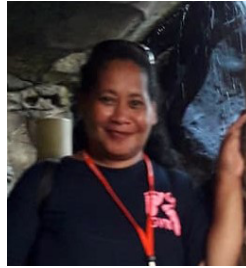
News/Stories Wanted

Mesekiw's News welcomes stories/articles/announcements from students, faculty, and staff. Submission deadline is Wednesday at 4:30 p.m. in hard and/or electronic copies to tchuziet@palau.edu or tchuziet@gmail.com.

Articles from MOC/PCC Alumni are also welcomed.

Please call 488-2470/2471 (extensions 251, 252, or 253) for more information.

Newest Contributor to the PCC Endowment Fund



Maylani Osarch

Palau Community College would like to recognize our newest endowment fund contributor, Ms. Maylani Osarch. Ms. Osarch is currently employed at Ministry of Health. Thank you Ms. Osarch for your contribution to Palau's only institution of higher learning! Your donation will help sustain the future stability and programs of Palau Community College.

2019-2020 PCC-BASED SCHOLARSHIPS APPLICATIONS NOW AVAILABLE!

DAVID W. SHIPPER MEMORIAL SCHOLARSHIP

DEBBIE O. NGIRAIBAI SCHOLARSHIP

**MATSON NAVIGATION COMPANY
INC. SCHOLARSHIP**

MOYLAN'S INSURANCE SCHOLARSHIP

PIERANTOZZI SCHOLARSHIP

PRINCE LEBUU SCHOLARSHIP

TERRY T. NGIRMANG NURSING SCHOLARSHIP

Applications must be submitted to the PCC Development Office by
Thursday, October 31, 2019.

APPLICATIONS ARE AVAILABLE AT THE PCC DEVELOPMENT OFFICE.
CONTACT FOR MORE INFORMATION ABOUT THE PCC-BASED SCHOLARSHIPS:

PCC DEVELOPMENT OFFICE

(TEL): 488-2470/2471 EXT. 252 OR 253

VACANCY ANNOUNCEMENT

- (1) Part Time Math Instructors/ Tutors (2)
(PCC Upward Bound Program Office)
depending on qualifications & hrs,
salary ranges from \$600 - \$800 biweekly
- (2) Part Time English Instructors/ Tutors (2)
(PCC Upward Bound Program Office)
depending on qualifications & hrs,
salary ranges from \$600 - \$800 biweekly
- (3) Part Time Science Instructors/ Tutors (2)
(PCC Upward Bound Program Office)
depending on qualifications & hrs,
salary ranges from \$600 - \$800 biweekly
- (4) Part Time Computer Science Instructors/Tutors (2)
(PCC Upward Bound Program Office)
depending on qualifications & hrs,
salary ranges from \$600 - \$800 biweekly
- (5) Admissions Counselor
(PCC Student Services Division-Registrar)
salary range: \$15,542 - \$27,600 per annum
- (6) Library Assistant
(PCC Education & Training Department) depending on
qualifications and work experience. salary range: \$7,800
- 13,582 per annum
- (7) Social Science/Humanities-Instructor
(PCC Education and Training Department/
Academic Affairs Division) depending on
qualifications and work experience
salary range: \$16,010 - 28,280 per annum

For application forms and information, contact Harline Haruo at the PCC
Human Resources Office at 488-2470/2471 extension 227, or e-mail:
hr@palau.edu, or download forms at <http://pcc.palau.edu>.

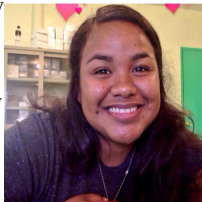
"PCC is an Equal Opportunity Employer."

ALUMNI NOTES

ZOE KINTARO

ASSOCIATE OF ARTS - LIBERAL ARTS

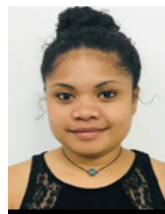
Zoe Kintaro graduated from Palau Community College in 2017 with an Associate of Arts in Liberal Arts Program. Ms. Kintaro is currently attending University of Guam.



Celebrating Birthday in September 2019



Cecil E. Meteolechol



Courtney T. Joshua



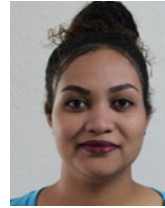
Dahlia M. Katosang



Hedrick W. Kual



Howard M. Charles



Janyssa T. Ford



Miguel DelLos Santos



Rogelio Vergara

PCC Endowment Fund

INVEST IN THE FUTURE OF OUR STUDENTS, OUR COLLEGE, AND OUR NATION

**To SUPPORT,
CONTACT US TODAY!**

P.O. BOX 9 Koror, Palau 96940

Phone: 488-2470/2471 (ext. 251/253)

e-mail: tellei@palau.edu

If you want to join the Bi-Weekly
Allotment Program, contact us NOW!

FIND PCC ONLINE FOR MORE INFORMATION



<http://www.palau.edu>



Palau Community College

ASPCC ELECTION RESULT CONTINUED FROM PAGE 2

Sophomore Representatives	Total Votes
Jose Thomas	28
Tyula Kora Temarsel	26
Write in:	
Brandon Mengloi	1
RPSO President	
Ladrick Ngedebuu	50
Dilngar F. Shiro	52
Write in:	
Brandon Mengloi	2



Mesekiu's News

Palau Community College

P.O. Box 9 Koror, Palau 96940

ALUMNI NOTES showcases MOC & PCC alumni who are positive role models and contribute to the quality of life in their local communities.

If you are that Alumna/Alumnus or know someone who is, please contact the PCC Development Office at telephone numbers 488-2470/2471 (extensions 251, 252, or 253).

We would like to feature you in future *Mesekiu's News* issues.

stamp here