

Palau Community College

2013 Annual Report



Accredited by Accrediting Commission for Community and Junior Colleges of the
Western Association of Schools and Colleges

Table of Contents

President's Message

Board of Trustees.....	4
History.....	5
Organization Chart.....	6
Vision.....	7
Mission.....	7
Unifying Principles	7
Institutional Master Plan/Strategic Directions.....	8
Institutional Learning Outcomes.....	9
Institutional Assessment - FAMED.....	10
The Executive Committee.....	11

Office of the President

Accreditation Office.....	12-13
Development Office.....	14-26
Institutional Research Office.....	27-28

Administration & Finance

Human Resources.....	29-31
Physical Plant/Security.....	32
Finance/Business Office.....	33
Computer Systems.....	34
Food Service.....	35-36

Education & Training

Student Services.....	37-47
Upward Bound.....	48-49
Academic Affairs.....	50-87
Faculty Senate Association.....	88
OMIP(MAP).....	89-90
Continuing Education.....	91-94
Educational Talent Search.....	95-96
Adult High School.....	97-98
Non-Instrument Navigation.....	99
Tan Siu Lin PCC Library.....	100-103

Cooperative Research & Extension..... 104-109

Operating Budget.....	110
Board of Trustees/Administrators/Faculty & Staff.....	111
Personnel Listings.....	112-119
Campus Map.....	120

President's Letter



On behalf of the entire Palau Community College (PCC), I am once again pleased to present to you our constituents, supporters, and colleagues the 2013 Annual Report which provides highlights and accomplishments of the College during the past year.

This report provides some of PCC's key activities in support of the College's vision of guaranteeing high quality undergraduate programs in business, career and technical education, and arts and sciences. These activities are consistent with the college's purpose of making high quality post-secondary education available to the citizens of Palau and the Micronesia region.

As a young developing nation, it is important that we continue to engage in a collaborative and supportive effort to instill in our community the notion that economic prosperity is dependent on the training and development of our workforce. We are proud to play a role in provision of higher education in our capacity building effort.

Our college continues to strive for excellence and would appreciate your input to be used to improve our programs and services to better meet the needs of our community. Please feel free to contact me via email: tellei@palau.edu or telephone number: (680) 488-2470 /2471.

Your support is crucial to Palau Community College in accomplishing its mission.

Ke kmal mesulang.

Patrick U. Tellei EdD

President

.

Board of Trustees



BILUNG GLORIA G. SALII
CHAIRPERSON



MASA-AKI N. EMESIOCHL
VICE CHAIR



VALERIA TORIBIONG
SECRETARY/TREASURER



EMAIS E. ROBERTS, MD
MEMBER



REV. BILLY G. KUARTEI
MEMBER



SUMMER SAUNDERS
STUDENT TRUSTEE

The Board of Trustees guides Palau Community College in carrying out its institutional commitment to accomplish goals as stated in the vision, mission statement, and the 15-Year Institutional Master Plan. It provides stability and ensures continuity to the institution by protecting the College from political and external pressures. It sets institutional policies and works with the College President to champion excellence and innovation for generations of students in Palau and the Micronesian region.

The Board of Trustees believes in advocating higher education opportunity to equip students with the academic skills needed to transfer to four-year colleges and universities, and to enhance technical skills to meet workforce expectations in a rapidly changing local and global job markets.

The Student Trustee is a voting member elected by the student body to represent the students in the College's governing body.

History

1927 - 1944 Mokko School
Japanese Administration

1948 - 1955 Palau Intermediate School
Mr. Sadang N. Silmai, First Principal
Palau District - Trust Territory of the Pacific Islands

1955 - 1968 Palau Vocational School
Mr. Sadang N. Silmai, Principal
Palau District - Trust Territory of the Pacific Islands

1968 - 1970 Micronesia Occupational Center
Mr. Max Jones, Director
Palau District - Trust Territory of the Pacific Islands

1969 - 1977 Micronesia Occupational Center
Mr. Wilhelm R. Rengiil, Deputy Director
Palau District - Trust Territory of the Pacific Islands

1970 - 1972 Micronesia Occupational Center
Mr. Norval Marsh, Director
Palau District - Trust Territory of the Pacific Islands

1972 - 1986 Micronesia Occupational College
Mr. Wilhelm R. Rengiil, President
Palau District - Trust Territory of the Pacific Islands

1981 Micronesia Occupational College
Mr. Henry J. Hoff, President
Palau District - Trust Territory of the Pacific Islands

1986- Micronesia Occupational College
Rev. Billy G. Kuartei, Interim President
Member, College of Micronesia Board of Regents

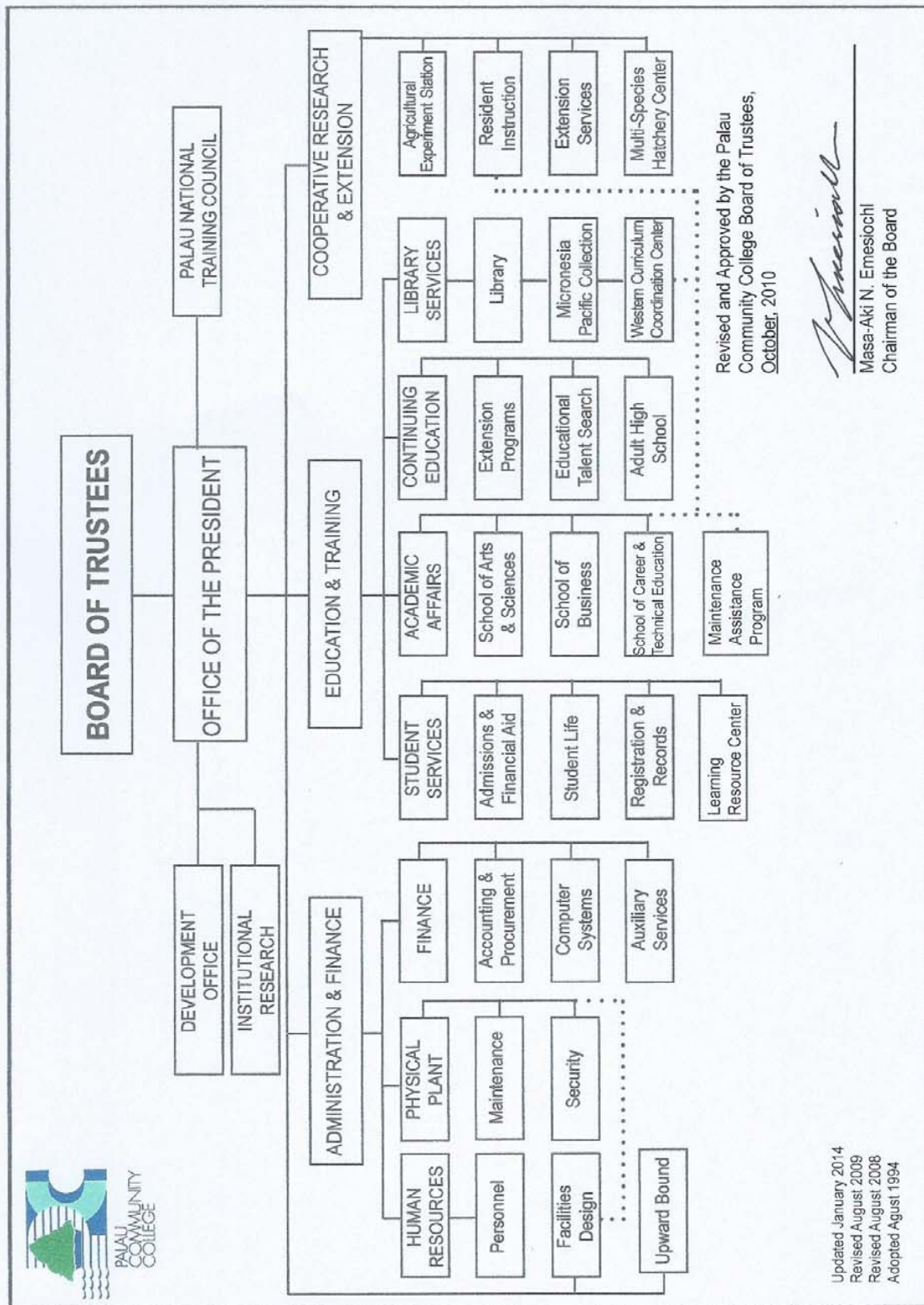
1986 - 1997 Micronesia Occupational College/Palau Community College
Mr. Francis M. Matsutaro, President

1993
Palau Community College was officially Inaugurated under the Republic of Palau Public Law (RPPL) 4-2

1998
Mr. Mario H. Katosang, Interim President

1999 - Present
Dr. Patrick U. Tellei, President





VISION - *Where We Want To Be*

We guarantee quality and excellence.

MISSION - *Who We Are and What We Do*

Palau Community College is an accessible public educational institution helping to meet the technical, academic, cultural, social, and economic needs of students and communities by promoting learning opportunities and developing personal excellence.

UNIFYING PRINCIPLES

How We Behave - *Semesmel a Ureor*

Teamwork - *Oba Tal Tekoi*

Quality Services - *Kot el Ngarbab Lomeruul*

Open Communication - *Diak a Berrotel*

Managing with Goals - *Ulterkokl Olengcheled*

Promoting Leadership - *Oldubech a Kedul a Dereder*

Integrity and Loyalty - *Melemalt e Melangesmad*

Community Ownership - *Tekoi el Buai*

Continuous Improvement - *Ouelangch ra Melemolem el Klungiolel a Tekoi*

Creativity and Innovation - *Sebrakl, Ituuk, e Melasm a Beches el Tekoi ma Uldasu*

People and Respect for Others - *Omengull ra Tang ma Tang el Chad*



15-YEAR INSTITUTIONAL MASTER PLAN 2009-2024

Strategic Directions

Strategic Direction 1: Student Success

PCC will intensify its effort to enhance existing programs and services, as well as develop new ones, all in an effort to improve student success.

Strategic Direction 2: Institutional Culture

The institutional culture of PCC will be one that embraces planned changes to continually improve and links the mission and vision in guaranteeing quality and excellence.

Strategic Direction 3: Resources

The College will diversify and increase resources to provide quality programs and services, facilities, technology, and human resources to support its mission and goals. The College will be prudent in the allocation of resources to support operations and in support of its short, medium and long range plans in line with the strategic directions and mission of the College.

Strategic Direction 4: Culture of Evidence

The College will provide data driven assessment which generates accurate and reliable information, identify specific evidence of its efforts in strategic areas, analyze that evidence, and use its findings to make planning and resource allocation decisions as the basis for continuous improvement.

Institutional Learning Outcomes (ILOs)

ILO 1: Critical Thinking & Problem Solving

Analyze and solve problems by using informed judgment based on evidence, sound reasoning and/or creativity to differentiate facts from opinions and to specify solutions and their consequences.

ILO 2: Communication

Effectively communicate, both orally and in writing, thoughts in a clear, well-organized manner to persuade, inform and/or convey ideas in academic, work, family and community settings.

ILO 3: Quantitative and Technological Competence

Use mathematical skills appropriate to our technological society by analyzing and solving problems that are quantitative in nature and use technology for informational, academic, personal and professional needs.

ILO 4: Diversity

Distinguish and defend differences in cultures and behaviors between the self and others by demonstrating respect, honesty, fairness, and ethical principles in both personal and professional life.

ILO 5: Civic Responsibility

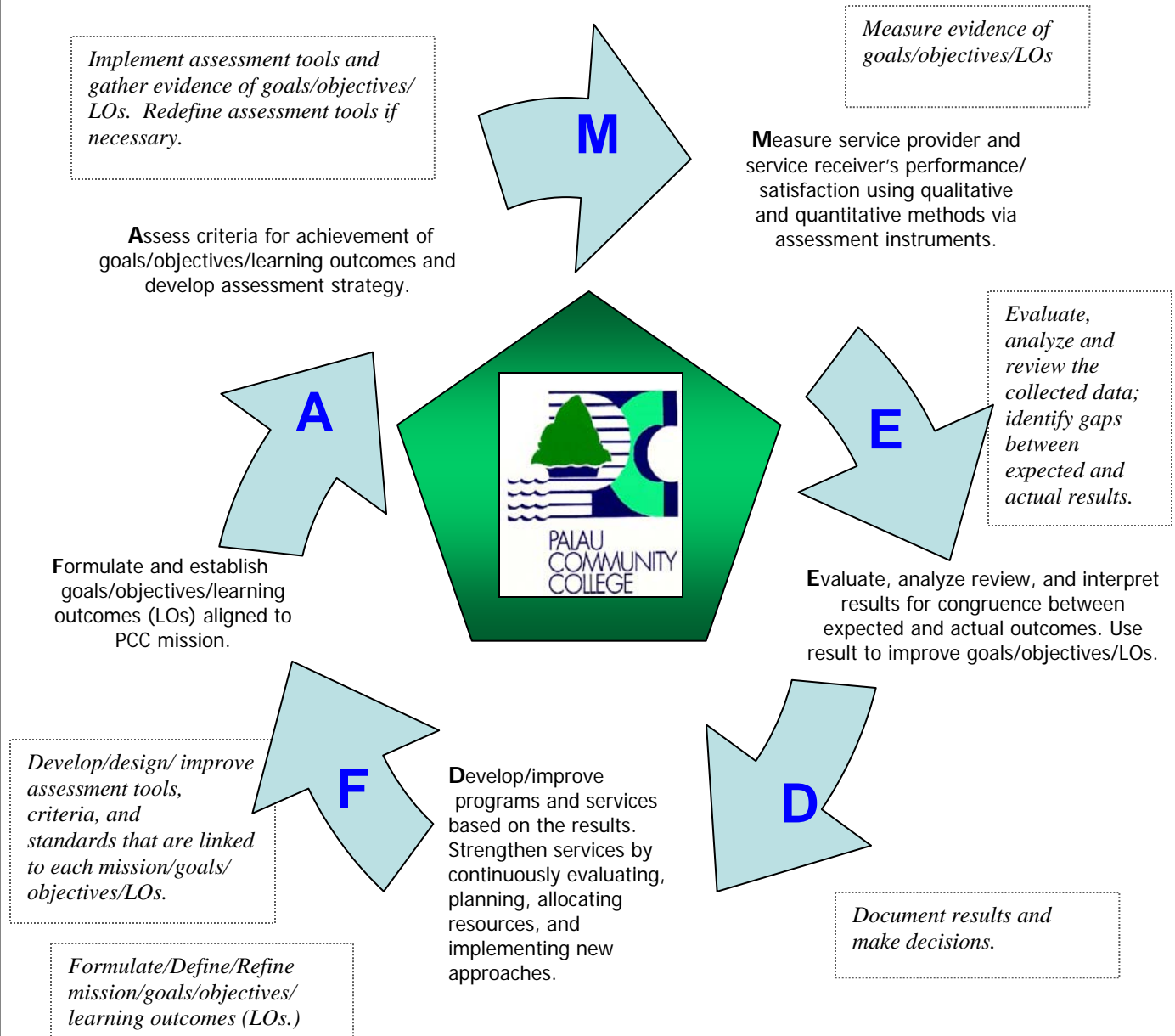
Apply the principles of civility and morality to situations in the contexts of a healthy family, work, community, environment and the world.

ILO 6: Aesthetics

Apply numerous means of inquiry to experience and appreciate the values of arts and nature.

Institutional Assessment

FAMED is the institutional assessment, planning and implementation process. This process requires all governance structure, including those at academic and non-academic programs; department and program levels to evaluate on a regular basis their services and overall effectiveness.



Executive Committee

The Executive Committee (EXCOM), the College's management team, is composed of the College President and heads of the College's departments/divisions and programs. It is responsible for planning and decision making protocols pertaining to the flow of human, facilities, technology, and financial operations of the institution.

The Executive Committee serves as an effective means to gather information, deliberate, report, and discuss issues of concerns in monthly and/or special meetings. Members share information about their departments/ divisions' activities, and are responsible for sharing the meeting's discussions within their respective areas.

The Executive Committee identifies the evaluation reports and results for publications by the Institutional Research Office, and the means to report such results in College and annual publications or the local media. It also reviews and approves program recommendations for implementation.



Dr. Patrick U. Tellei

Mr. Jay Olegeril

Mr. Thomas Taro

Mr. Robert Ramarui

Mr. Sherman Daniel

Mr. William O. Wally

Ms. Kuye Belelai

Mr. Tchuzie Tadao

Mr. Clement Kazuma

Ms. Hilda N. Reklai

Ms. Laura Mangham

Mr. Bruce Rimirch

Ms. Dahlia M. Katosang

Ms. Ligaya Sara

Mr. Omdasu T. Ueki

Ms. Uroi N. Salii

Ms. Vernice Rechebei

Mr. Todd Ngiramengior

Ms. Deikola Olikong

Mr. David Thompson

Dr. Isebong Asang

Ms. Lesley Adachi

Ms. Yosko C. Aichi & Ms. Kornelia Thomas

President

Vice President, Administration & Finance

Vice President, Cooperative Research and Extension

Dean, Academic Affairs

Dean, Student Services

Dean, Continuing Education

Project Director, Upward Bound

Director, Development Office

Director, Physical Plant

Director, Student Life

Project Director, Talent Search/Adult High School

Director, Computer Services

Director, Admissions & Financial Aid

Institutional Research Analyst

Director, Human Resources

Director, Finance

Director, Learning Resource Center

Executive Assistant to the President

Accreditation Liaison Officer

Director, Library Services

President, Faculty Senate Association

President, Classified Staff Organization

President, Associated Students of Palau Community College

Accreditation Liaison Office

In January, the college Accreditation Steering Committee continued to work on the 2013 Midterm Report where the committee reviewed the third draft of the said report. After the review of the third draft, the committee submitted the final report to the college President on January 25, 2013 for his review. The college President reviewed the report and sent the report back to the committee with his comments and recommendations. The committee addressed the President's comments and recommendations and sent the final report to the President and the Board of Trustees for their review and approval in February 2013. The college submitted its Midterm Report addressing the four recommendations and 2009 planning agendas to the Accrediting Commission for Community and Junior Colleges, Western Association of Schools and Colleges in March 2013.

Palau Community College also continued to work on its College Status Report on Student Learning Outcomes Implementation. The Accreditation Liaison Officer and the Assistant Accreditation Liaison Officer worked closely with the Dean of Academic Affairs, Dean of Student Services, Librarian, Associate Dean of Academic Affairs/Committee on Programs and Curricula Chairperson and faculty to complete the report. The Accreditation Liaison Officer submitted the report to the college President in February 2013 for his review and approval. The college submitted the College Status Report on Student Learning Outcomes Implementation to the Accrediting Commission for Community and Junior Colleges, Western Association of Schools and Colleges in March 2013.

Both the 2013 Midterm Report and the College Status Report on Student Learning Outcomes Implementation update were due to the Commission in March 2013. Palau Community College awaits the Commission's decision of both reports which will be available after the Commission's meeting in June 2013.

Palau Community College Accreditation Office continues to conduct different trainings, workshops and meetings with different college programs and services to ensure assessment, planning and implementation continue at the different levels of the institution. In April, a meeting with the Department of Administration and Finance and a meeting with the Division of Student Services took place to review the most revised program review templates, to discuss different assessments required by the different levels of services, and to remind each department/division of its action plans' implementations. The Accreditation Office began noon time meetings with academic program/department faculty on April 17th. The noon time meetings were conducted daily and continued until May 21st. Noon time meetings discussed course assessments, the most revised course assessment and academic program/department review templates, signature assignments, program/department mappings, and course outlines. Noon time meetings also allowed the faculty an opportunity to ask specific questions and/or request specific assistance from the college Accreditation Liaison Officer, Assistant Accreditation Liaison Officer and Associate Dean of Academic Affairs for their specific academic degree programs or academic departments.

The college Accreditation Liaison Officer serves as the college Institutional Assessment Committee (IAC) chair. One of the responsibilities of IAC is to review program reviews from different programs and services of the college and make recommendations to the college Executive Committee and the college President. The IAC met four times in spring 2013 to review ten (10) programs/departments program reviews. IAC sent its report which included recommendations to the college Executive Committee and the President at the end of May 2013 for their review, recommendations and/or approval.

We Guarantee Quality and Excellence

In April, the college sent the Dean of Student Services, Associate Dean of Academic Affairs, Accreditation Liaison Officer and Assistant Accreditation Liaison Officer to attend the WASC 2013 ARC which was held in San Diego, California. The WASC 2013 ARC provided more focused and in depth workshops on assessments, collection of data, planning, implementation, and closing the loop. Attending this conference gave the college an opportunity to continue learning, to get updated, and to bring back more knowledge and ways on how to support student learning and ensure institutional effectiveness.

With financial assistance and support of COM-FSM Land Grant, Palau Community College received \$50,000.00 to support its accreditation work. With this assistance, PCC is in the process of procuring and implementing the TracDat program. TracDat is a tool that can help college programs and services to stay on top of the assessment process. This program will assist the management of the assessment-based portion of academic and non-academic programs and services. It will assist the college in the management of the assessment process itself. The TracDat software will help the college to document the decisions made after evaluating outcome findings, it will serve as a reminder of results and action plans that need to be addressed in the following years, and it will also document college successes and improvement needs. The above mentioned support will allow the college to generate assessment reports not only at the individual program and service levels but also at the institutional level. TracDat will also help the college to understand how different program outcomes match to accreditation standards and expectations, college goals, learning outcomes and the institutional master plan. TracDat will support the college with different reports which will allow more understanding on how well the college is meeting its goals/objectives/learning outcomes and also provide the college a true picture of where it is going.

The college Accreditation Office continues to work closely with faculty, staff, students and administrators to ensure that the college continues to be and remains an accredited institution.



Development Office

The Development Office is responsible to the Office of the President in the areas of institutional development, planning, and public relations.

Mission

To sustain and foster institutional development, planning and community relations to support college programs and services

Personnel

The Development Office currently has 4 full-time employees:

Director

Administrative Assistant

Bookstore Supervisor

Student Assistant

Goals/Objectives:

Public Relations - To foster a positive image and perception of the college to the community through newsletters, annual reports, advertisements, college websites, and local media outlets.

Alumni Relations - To strengthen the MOC/PCC Alumni Association to help promote and support college programs and services through the Mesekiu's Newsletter, Alumni Association meetings, Alumni Awards in spring commencements and Alumni donations and contributions to the endowment fund.

Endowment - Seek to generate and utilize effective use of resources to increase the PCC Endowment Fund to \$10 Million by 2024. Through college initiative of enrolling one new bi-weekly donor every week; whereas, the college will enroll fifty-two new donors members each year; to sell tickets worth \$25,000 for every Thanksgiving Endowment Fundraiser; to increase telethon pledges during the fundraiser, and to reach a \$50,000 goal annually.

Bookstore

Mission

The PCC Bookstore is dedicated to support academic programs by providing students, faculty and staff needed education resources to promote learning and success.

Goals/Objectives:

To provide academic textbooks to support learning and teaching in a timely manner by working closely with Academic Affairs to order and purchase textbooks and have the books available at the College Bookstore prior to the first day of instruction.

To provide academic tools/supplies to support learning and teaching in a timely manner for Technical Education courses by working closely with Academic Affairs to purchase needed tools/supplies available at the College Bookstore prior to first day of instruction.

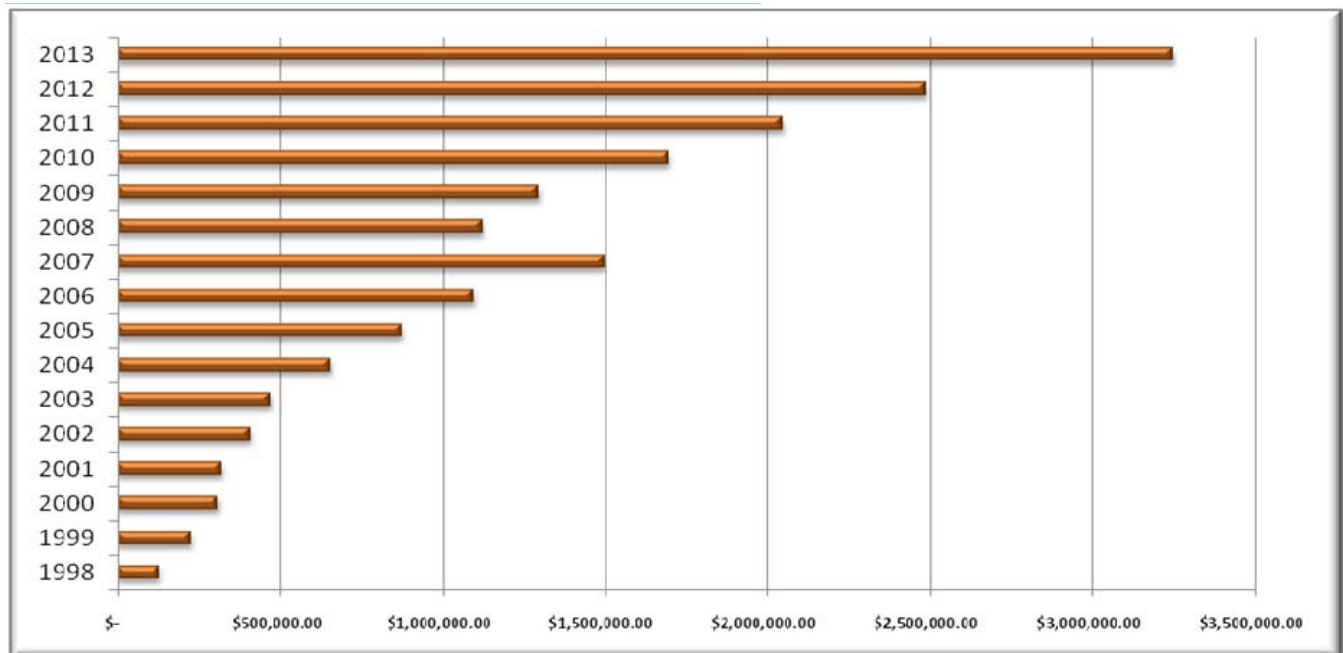
To sell a variety of educational merchandise to promote the college and to provide a one stop school supplies shopping to the college community.

Endowment Trend by Year

Year	Amount
1998	\$132,273 (\$100,000 - OEK)
1999	\$230,496
2000	\$314,496
2001	\$324,896
2002	\$413,335 (\$84,000—OEK)
2003	\$474,233
2004	\$657,911
2005	\$878,185
2006	\$1.1 Million
2007	\$1.5 Million
2008	\$1.125 Million (<i>result of economic decline</i>)
2009	\$1.3 Million
2010	\$1.7 Million
2011	\$2.167 Million
2012	\$2.490 Million
2013	\$3.25 Million (<i>as of December 31, 2013</i>)



PCC Students receive donations from local businesses



Donor support and contributions reflect the efforts of our students in Palau and the Micronesian region, faculty and staff, alumni, community leaders, and the people of Palau. The ROP National Government was the first donor and the highest single contributor to the PCC Endowment Fund.

We Guarantee Quality and Excellence

PCC Endowment Bi-Weekly Contributors

National Government (ROP)

Total Contributors: 625

Total Amount: \$36,014.90

1. Kerai Mariur	41. Sanchez P Moses	81. Hadleen Medalarak
2. Josepha J. Rdialul	42. Hilaria Sungino	82. Jochebed E Albert
3. Dina Sandei Pcc	43. Helena Gulibert	83. Ray Mechol
4. Ibuuch M Ngiriou	44. Molina T Skilang	84. Lyliza Madris
5. Edline Mabel	45. Lorilynn Derbai	85. Adline Ngirakesau
6. Edwin Ongerung	46. Gustav Aitaro	86. Zilla R Mereb
7. Davis Saburo	47. Jeraldine E Tudong	87. Joselita Imetuker
8. Lloyd Ueda	48. Ngerikl Baules	88. Siles Ngiraremiang
9. Eleanor Anderson	49. Ervin C Rengechel	89. Denicia Mariur
10. Delorah Yoshiwo	50. Brian Lakobong	90. Kailang Asanuma
11. Muriel Sinsak	51. Naomi Ngirakamerang	91. John Pedro
12. Maria G Masayos	52. Daniel H Adachi	92. Edmund Ongrung
13. Besie E Elbelau	53. Meo Tomei	93. Henciano Basilio
14. Bernard Ngiraibai	54. Inez Remengesau	94. Philip N Haruo
15. Cleofas Iyar	55. Lory Ise	95. Gabriel B Renguul
16. Jesse Edesomel	56. Miriam R West	96. Gregory Ksano
17. Reuben K Ngirakesau	57. Virginia N Teriong	97. Clifton M Rubasch
18. Nanumi Toribiong	58. Erolflynn Kloulechad	98. Thomas M You
19. Stice Rdechor	59. Hermina Marino	99. Benedicta Mechol
20. Williander Ngotel	60. Camilius Ngirmeriil	100. Lilly E Oilouch
21. Helen Sugiyama	61. Pauline Kibei	101. Alfonsa Blesoch
22. Duane Tochi	62. Rosalita D Odaol	102. Villany Thomas
23. Scott F Weers	63. Edna I Raymond	103. Sabina Andrew
24. L Rechelluul	64. Hilaria Renguul	104. Merline Malsol
25. Clint Mersai	65. Deneley Mutsuo	105. Sngebard Delong
26. Peggy Andreas	66. Francisca Ngirarorow	106. Jeffrey Olegeriil
27. Clive Telei	67. Hannah Tesei	107. Clare Saburo
28. Boone Silas	68. Christina Paulis	108. Julia J Wally
29. Jodston T Wasisang	69. Jelina Remoket	109. Dean A Terry
30. Valeria Ngirameketii	70. Elizabeth Ngirakesau	110. Perry Hideos
31. Matthew G Blailes	71. Valentine Debesol	111. Raymond Roman
32. Happy Oilouch	72. Dominina Ngiraibai	112. Jackline Pedro
33. Jon Eriich	73. Marcella Oleuachel	113. Stelinda Gabriel
34. Giovany Siliang	74. Jeanette R Ngirngetrang	114. Cyril P Leonardia
35. Mayer L Julius	75. Olympia Amano	115. Angelina A Tutii
36. Nicholas Aquino Jr.	76. Inglord Sumang	116. Yutaka Gibbons Jr.
37. Edson Chiokai	77. Margarete N Riumd	117. Ngelechel Miko
38. Wigson Yasuo	78. Freda Harvey	118. Kevin N Ngitong
39. Galileo E Saiske	79. Ngkeruker H Yaoch	119. Marphina R Ngitong
40. Lourigene K Samsel	80. Janice Yukiwo	120. Mildred Ngirturong

We Guarantee Quality and Excellence

121. Theresa Ililau	163. Ruth C Elbelau	205. Mesrine U Kelmal
122. Melanie Ringang	164. Doris S Wachi	206. Enitha Edward
123. Johnson Joshua	165. Rozella Tochi	207. William Erungel
124. Shelley K Imetengel	166. Fermina Donatus	208. Gloria Oseked
125. Renee Benardo	167. Angela M Blaluk	209. Beatrix Remoket
126. Flores V Moses	168. Darcy O Iskawa	210. Rechesengel Iyechad
127. Abraham Ngiruos	169. Reilly M Hideos	211. Melissa Gabriel
128. Christina N Orak	170. Doramae I Ngiratregd	212. Lady Ngiratkakl
129. Deborah T Wiley	171. Noel Ngiratmab	213. Jolene M Rafael
130. Andrew Tabelual	172. Mariei Renguul	214. Delphina Sumor
131. Epsie West	173. Willingheart C Subediang	215. Jackson R Ngiraingas
132. Ruth B Ulitch	174. Patricia A Franz	216. Jaqueline Ngirdimau
133. Annette M Siksei	175. Lucyjane Techechur	217. Phoebe Sengebau
134. Kabidor Taima	176. Imengel Secharmidal	218. Darlynnne Takawo
135. S O Adelbai	177. Iterir J Oketol	219. Kaleb Ngirngebedangel
136. Edward Yaoch	178. Davis Tamtereng	220. Francisca Ngireblekuu
137. Yvan S Ruluked	179. Oscar Hainrick	221. Morland Naruo
138. Delina Kebekol	180. Marvin Wasisang	222. Debby Debengek
139. Gillham Obeketang	181. Dodger K Melus	223. Carlson Etpison
140. Sophie Gibson	182. Lydia Otobed	224. Rayna Bailas
141. Mayleen T Ngiriou	183. Johnson Emesiochel	225. Lesley Ngiramolau
142. Damiana Y Ngiratecheboet	184. Alfonso N Samil	226. Jesse Ngiraboi
143. Rosa Lynn Florendo	185. Ponsian Sambal	227. Godwin Philip
144. Christopher Debengek	186. Barbara Solang	228. Brandon B Giramur
145. Hilda Kenzio	187. Annette Ucherkemur	229. Ronnie S Pedro
146. Oshiro Ngirchechol	188. Alex Cruz	230. Alton Samsel
147. Koriang Clarence	189. Ethiopia Mabel	231. Marygold Yobech
148. Delina Kulas	190. Cliff Cruz	232. Godwin Smau
149. Abba Ngiruos	191. Kerufin Tolngii	233. Doreen Yoshiwo
150. Wilhelm B Rechelluul	192. Vernie S Ngiraked	234. Aldrin Tellei
151. Magaria Tellei	193. Zeralda L Smau	235. Allen Ngirailemesang
152. Mary Basiou	194. Early M Salii	236. Russel Roman
153. Benjamin Temol	195. Lawrette Darrow	237. Thomas Ngirailild
154. Ella Rdiall	196. Polycarp Marcil	238. Scarlett Nambert
155. Procerpine Mellil	197. Lanny J Tsuneo	239. Lamoine V Abraham
156. Azaria Timarong	198. Imengel Mad	240. Techur Rengulbai
157. Evelyn Adelbai	199. Judson Butelbai	241. Joyce Ngirarorou
158. Omar Faustino	200. Romson Remoket	242. Gretta J Etiterngel
159. Kerufin Tellei	201. Clarinda Worswick	243. Petrus E Sadang
160. Lorraine A Tellei	202. Lucia W Tabelual	244. Della Mobel
161. Delilah Llecholech	203. Jeremiah Tem	245. Cleora Cleofas
162. Ernestine Kadoi	204. Rita Kuchad	246. Clement Maech

We Guarantee Quality and Excellence

247. David Timarong	289. Free R Soalablai	331. Maximo Marcello
248. Glenford Fritz	290. Skeras Hideos	332. Ruluked L Daniel
249. Jerry N Saka	291. Aderiano Noah	333. Rebecca Ngirngebedangel
250. Arthur Remeliik	292. Cleofas Siangeldep	334. Johndeck Timarong
251. Harry Sambal	293. Kennedy Kotaro	335. Jefferson I Eriich
252. Kenezi Mutok	294. Ephraim Lewis	336. Darwin G Siang
253. Andres S Oseked	295. Calvin Ramarui	337. Lanson Doktok
254. Eugario Ngiratmab	296. Richard Mereb	338. Cliffton Soalablai
255. Christian Isamu	297. Elmer Rdiall	339. Skulie Eldebechel
256. Edmund N Telmang	298. Dalter R Takawo	340. Clayton D Ngiraked
257. Chiba Rii	299. Froline Ann Bultedaob	341. Delilah M Shiro
258. Jenkins Emesiochl	300. Franco Marcello	342. Melvin S Ubedei
259. Francisco Melaitau	301. Daniel M Teliu	343. Joany R Ngeluk
260. Tedrcik Obichang	302. Lackson V Basilius	344. Palmer D Swei
261. Ismael Dachelbai	303. Debed Luii	345. Benhart Baulechong
262. Merep J Ngiralmu	304. Ricky Rubario	346. Ronny Ngirachereang
263. Benedict U Tellei	305. Dennis Blaluk	347. Malsol E Nobuo
264. Gathan Isimang	306. Burton Wong	348. Derrick David
265. Wilhelm Ngiralbong	307. Borman Teltull	349. Fritzerald B Demei
266. Gloor N Gates	308. Karl Iekar	350. Lelis Madraisau
267. Burt N Ldesel	309. Sterlina Gabriel	351. Davis Sambal
268. Wilhelm Ngiraikelau	310. Jelynd Ngirmang	352. Allen P Remeliik
269. Jessica Blailes	311. Eileen Solang	353. Douglas Tkel
270. Vernon Basilius	312. Dean C Renguul	354. Olivia I Orak
271. Tommy Riumd	313. Christine B Trolui	355. Josiafat U Ibutirang
272. Ralph Remoket	314. Realynn L Tucheliaur	356. Fenally Seklii
273. Petrus Bells	315. Bolton X Tengoll	357. Dominic Kyota
274. Irving Tesei	316. Lolyna E Ngiratrang	358. Victor E Remengesau
275. Winfred A Sabino	317. Colin Isamu	359. Johnny Sambal
276. Eddie E Ngirarikel	318. Dianne Tajima	360. Ishmael Imetengel
277. Theophilus Ngiraklei	319. Margie Ngirmidol	361. Fred Ramarui
278. Caleb Mad	320. Jennifer S Olegeriil	362. Jorlyne David
279. Grant Ngirengchui	321. Portiana Franz	363. Samuel Ldesel
280. Raymond Tesei	322. Antonio B Mariur	364. Ian O Tervet
281. Davis Mesubed	323. Aloysius Alonz	365. Mathew J Rivera
282. Timarong Remengesau	324. John Gabriel	366. Temdik Ngireblekuu
283. Greps Demei	325. Sherry Sisior	367. Dolyn I Tell
284. Albert R Philip	326. Jovian Adelbai	368. Harline S Stark
285. Gerald Ringang	327. Willy Mays Towai	369. Kenny M Sengebau
286. Steven Sebal	328. Earl S Decherong	370. Byron Wong
287. Willter Remasech	329. Antony Adelbai	371. Benjamin M Master
288. Leonard O Mikel	330. Peter Napoleon	372. Bradford Blaluk
		373. Bradley Rimirch

We Guarantee Quality and Excellence

374. Stevenson Kuartei	416. Johnmark Olkeriil	458. Carter Ngiralbong
375. Bob Rengchol	417. Sharmila T Thomson	459. Everson Sadang
376. Lydia Reklai	418. Evelyn F Tomokane	460. Bernice Sidoi
377. Arsenio Saburo	419. Pamela Kertou	461. Lawrence Sumor
378. Siles Ngiralulk	420. Theresita C Aderiano	462. Dave A Orrukem
379. Marjorie K Mad	421. Maurine Kuroda	463. Stacy Akitaya
380. Eric Rehuher	422. Mesiwal Madlutk	464. Manasseh Temol
381. Juanita Marcil	423. Joyce L Naruo	465. Evelyn M Teriong
382. Sadako Tadao	424. Shirley Tirso	466. Sylverius Tellei
383. Monaliza S Melayong	425. Sheila J Pedro	467. Elmera Syozitaro
384. Temmy R Temengil	426. Adelaide Rechemang	468. Encely L Ngiraiwet
385. Esther S Kyota	427. Rebecca Tekriu	469. Festus Ringang
386. O'brien Cleofas	428. Isabelita Rengechel	470. Patricia K Kloulechad
387. Quintina Nestor	429. Deborah D Elibosang	471. Ismael N Aguon
388. Jennifer Kailau	430. Amos B Solomon	472. Jowas Wasisang
389. Grace Tomoichi	431. Yuchi Chin	473. Shirley Ngiramolau
390. Jun Ushibata	432. Mariano Hagileisou	474. Jerome Sakurai
391. Merlyne M Katosang	433. Ruth Naruo	475. Jesse Sengebau
392. Joncy Useluku	434. Loretta Phillip	476. Metiek K Ngirchechol
393. Tino Faatuuala	435. Evelina Elidechedong	477. Augusto Blailes
394. Sinoyumi Emesiochel	436. Frannie Ngiltii	478. Sebastiana T Borja
395. Ucherriang U Aderkeroi	437. Antonette O Merur	479. Judy Mathew
396. Nazaria Tutiy	438. Jocelyne L Tonyokwe	480. Elspeth Ngiraibai
397. Losii Samsel	439. Madline Masaru	481. Daniel S Aquon
398. Basiano Kitalong	440. Cheryl Ongalibang	482. Edwin Tomoichi
399. Tmekei Ellis	441. Flora Kintaro	483. Sanford T Smau
400. Rose L Tadao	442. Alynda O Masayuki	484. Tito Ringang
401. Alexander Sumor	443. Donna M Gibbons	485. Julien Adelbai
402. Nixon A Augustine	444. Alyn Kikuharu	486. Baklai Temengil
403. Pamfila Ann Techur	445. Jocelynn Rechebong	487. Pracy Masubed
404. Oshiro I Lorin	446. Haruich Telmetang	488. Meked Besebes
405. Fumiana Masayos	447. Gloria Idesiar	489. Nglodch Luii
406. Cherylene Rengulbai	448. Pasqual Ongos	490. Mars Olkeriil
407. Ellenda O Rengolbai	449. Trebkul Tellei	491. Mercy S Kiuluul
408. Lalii Meyar	450. Gwenthlyn D Bai	492. Uodelchad Ngiriou
409. Beatrix B Taima	451. Harlan Derbai	493. Lelly E Obakerbau
410. Antoinette Tengeluk	452. Larry Mamis	494. Cartfield Sablan
411. Sylvia Osarch	453. Devon Andreas	495. Paul Dakubong
412. Nora Oiwil	454. Olkeriil J Yaoch	496. Jeffrey Titiml
413. Francis X Termeteet	455. Hilda Etpison	497. Susan Malsol
414. Edwina Polloi	456. Jason Tewid P	498. Brownly Salvador
415. Lisa King-Ich	457. Uelbil P Michael	499. Skaruno April

We Guarantee Quality and Excellence

500. Sabina Ewatel	542. Johnson Saikemal	584. Rumi E Singeo
501. Yashiro Renguul	543. Wiseman Kumaichi	585. Clarisa Rdang
502. Inaria Dou	544. Evalyn Mersai	586. Alex R Ngiraingas
503. Keizy Kuroda	545. Ryan A Franz	587. Ellen B Chokai
504. Scott Delkuu	546. Verna B Obak	588. Berry Moon I Watson
505. Peggy T Hanser	547. Lucy A Tangelbad	589. Everlyn Belelai
506. Ronald Kumangai	548. Ann L Pedro	590. Shrilynn Madraisau
507. Cyrus Renguul	549. Melanie Charles	591. Edolem Ikerdeu
508. Wilson Ongos	550. Alexander S Merep	592. Salustia Mira
509. Matsuda Ngiraikelau	551. Kalistus Ngirturong	593. Johana Ngiruchelbad
510. Rebecca Ngiruos	552. Secilil Eldebechel	594. Henrietta N Merei
511. Kalinda Beketaut	553. Rena Iluches	595. Lucio Hidemi
512. Elizabeth E Malone	554. Guthbert Ikeya	596. Lilian N Marcil
513. Sharon Madris	555. Sasao Skiwo	597. Jason C Nolan
514. Sherry Olikong	556. Losii Ngirdengoll	598. Theofina Sandei
515. Ronald Rdechor	557. Yokichi Mori	599. Dilisa M Brikul
516. Petra R Glenn	558. Nangisa Mai	600. Lucia B Santos
517. Martha Iskawa	559. Ellena Temol	601. Merlynda Ramarui
518. David Tarimel	560. Capily Mutsuo	602. Johanes M Polloi
519. Jersey Iyar	561. Tricia Wong	603. Lydia Reklai
520. Kate Salii	562. Beverly Rechuldak	604. Hector Frazer
521. Juanita E Udui	563. Alonz Moses	605. Shirley N Nakamura
522. Clara Rechebei	564. Michael Ngiruos	606. Bridget W Adachi
523. Lorena Miyuki	565. Priscillo Orukei	607. Marvin Willter
524. Raymond Ongino	566. Voloria V Riungel	608. Deskim Tutii
525. Marcella April	567. Esther Rengulbai	609. Melinda E Lawrence
526. Lory Isao	568. Katsumi T Ngirchokebai	610. Madelsar Ngiraingas
527. Edward Tadao	569. Salazar Joseph	611. Hasinta Idechong
528. Viola Stephanus	570. Gwenthyan Williams	612. Joanne M Sengebau
529. Sherwin Yamanguchi	571. Wenna Mereb	613. Willa Wong
530. Leoniza S Chiokai	572. Crystal L Meltel	614. Charley Simeon
531. Lourdes Materne	573. Tsungiko Renguul	615. Alice Pangelinan
532. Persilla A Rengiil	574. Mike Meyar	616. Beverly M Subris
533. Jr Young G Sikyang	575. Salome Hainrick	617. Earle Emiliano
534. Jelga Emiwo	576. Joyce Ramarui	618. Hila Asanuma
535. Katherine Kesolei	577. Stephly M Gabriel	619. Emilia A Katosang
536. Regina R Mesebeluu	578. Dana T Antipas	620. Linda I Ngirameketii
537. Regis Akitaya	579. Annette O Tirso	621. Jefferson T Thomas
538. Cinderella Adachi	580. Wanbe L Mesubed	622. Joanne D Udui
539. Wilbur Williams	581. Lovey Alfonso	623. Pillar Ngiraswei
540. Dwight Jr. Albert	582. Nancy R Camacho	624. Linda Ngotel
541. Adora Ngiramolau	583. Ralph W Ubedei	625. Joncy D Tkel

We Guarantee Quality and Excellence

Palau Public Utilities Corporation

Contributors: 17

Total Amount: \$975.84

1. Evalt Yaoch
2. Siriano Kailang
3. William Secharmidal
4. Luis Obichang
5. Tilden Teltull
6. Lorenzo Mamis
7. April Beches
8. Wridon Ngiralmu
9. Lucia Santos
10. Emil Sintaro
11. Clarence Saka
12. Jefferson Kuroda
13. Alvin Samsel
14. Emellakl Oiterong
15. Ernest Simer
16. Hector Tatingal
17. Antipas Raymond

Social Security Administration

Contributors: 2

Total Amount: \$130.00

1. Kumiko Kurihara
2. Jeany Spis

Palau Community Action Agency

Contributors: 11

Total Amount: \$815.62

1. Leonard Basilius
2. Eydeline Ikeya
3. Seniora Kintaro
4. Mike Ngeltengat
5. Lory I Ngemaes
6. Leslie Ngirablosch
7. Hosei Setsuo
8. Melan Jane Pedro
9. Gerald Remoket
10. Martina Ucherkemur
11. Maurine Teblak

Koror State Government

Contributors: 23

Total Amount: \$1,453.78

1. Regean Augustine
2. Michener M. Besebes
3. Pasquala Blesam
4. Rengechel Dlutaach
5. Bethwel Emul
6. Florentino Haruo
7. Kate Jonas
8. Vera Kanai
9. Mouais Kang-ichi
10. Rufino Kazuma
11. Perkins A. Kikuo
12. Estephan Kingtaro
13. Stanley Magholyalor
14. Stargell Mamis
15. Sorch Meyar
16. Natsko Ngiriou
17. Isaias Oiterong
18. Ilebrang Olkeriil
19. Lucio Remoket
20. Gershwin Rengiil
21. Ngirakesau Rengiil
22. Geofrey Techur
23. Jonathan Yalap

Palau Shipping Company Inc.

Contributors: 5

Total Amount: \$780.00

1. Benraick Isaac
2. Nicky Katosang
3. Regina Olikong
4. Shawn Esebei
5. William Keldermans

Palau Housing Authority

Contributors: 4

Total Amount: \$208.00

1. Frida Delmau
2. Grace Kishigawa
3. Josephine Francisco
4. Billy Umang

Palau Pacific Resort

Contributors: 19

Total Amount: \$1,339.00

1. Charles Brel
2. Elbetei Erchar
3. Gerino Haruo
4. Julia Haruo
5. Hiller Hiromi
6. Elouis Imeong
7. Flavin Imeong
8. Grayton Mad
9. Andrew Marcil
10. Lloyd Martin
11. Leonore Max
12. Temmy Mitaro
13. Estella Ngeluk
14. Richard Ngirngerak
15. Amelia Olebuu
16. Chester Peyerigyal
17. Marcus Rdechor
18. Pasquana Renguul
19. Alex Suzuki

Workforce Investment Act

Contributors: 6

Total Amount: \$332.80

1. Nglodch Luii
2. Josephine Ulechong
3. Noella K. Karmelong
4. Alex Spis
5. Sharon Bultedaob
6. Keiili Mikel

Palau International Coral Reef Center

Contributors: 1

Total Amount: \$26.00

1. Imnang Golbuu

We Guarantee Quality and Excellence

Palau National Communication Corporation

Contributor: 33

Total Amount: \$1,605.00

1. Laurida Meyar
2. Dennis Ngirngesang
3. Spunce Takada
4. Miller Rechelluul
5. Celestino Malsol
6. Loretta Shmull
7. Brenda Tarimel
8. Ringo Ultirakl
9. Kraskes Yakuchil
10. Danny Kingzio
11. Philipus Tkel
12. Dudley Ililau
13. Kesoao! Blailes
14. Prozert Ngiralmu
15. Hiram Recheke
16. Jesse Alfonso
17. Marissa Mad
18. Marcil Chiokai
19. Juslee Maui
20. Rolando Mission
21. LeoBen Teriong
22. Gloria Kyota
23. Susan Leong
24. Gailliard Rimirch
25. Kahili Remeliik
26. Dinah Lee Thomas
27. Karen Salii
28. Pamela Anastacio
29. Gillian Tellames
30. Hubert Akiwo
31. Blanche Salii
32. Maisar Tmakiung
33. Kebekol Rebluud

Palau Community College

Contributor: 134

Total Amount: \$14,329.55

1. Lowell I. Abraham
2. Lesley B. Adachi.
3. Ignacio Akiwo
4. Grace Alexander
5. Maurine Alexander
6. Clara Maile Andreas
7. Angelio Anthonio
8. Piora W. Asito
9. Vance P. Basilius
10. Megan Kathleen Beard
11. Sheryl P. Bedana
12. Kuye U. Belelai
13. Samantha T. Bells
14. Leona Blaluk
15. Jemmy Blelai
16. Elenita B. Brel
17. Margeline V. Bubun
18. Juan A. Camacho
19. Howard Morse Charles
20. Tutii Elbuehel Chilton
21. Sherman Daniel
22. Aurora G. Del Rosario
23. Miguel A. Delos Santos
24. Dawckins Dingelius
25. Irving Dwight
26. Nobby H. Enano
27. Norma A. Etibek
28. Dilyaur Franz
29. Leory Fritz
30. Alex M. Gachalian
31. Nena H. George
32. Harline Haruo
33. Arlene Ignacio
34. Keith Ignacio
35. Virginia Ikeya
36. Tublai B. Ililau
37. Hellen Imanuel

38. Petrus Itelmong
39. Vincent Ito
40. Pasquana Iyekar
41. Pauline Jerry
42. Lorenza Joseph
43. Maria Joseph
44. Dahlia M. Katosang
45. Clement Kazuma
46. Rodney T. Kazuma
47. Umang Kesolei
48. Keiden Kintol
49. Jade S. Kloulchad
50. Johnston A. Kloulubak
51. Arbedul Koshiba
52. Damiana Kunihiro
53. Verna Doseb Kyota
54. Hulda Lukas
55. Rehabeam Madlutk
56. Abel Maech
57. Akilina Maech
58. Hamilton Maech
59. Laura S. Mangham
60. Alvina O. Marcil
61. Lydia M. Marero
62. Lyndon Masami
63. Victoria Maui
64. Jose Meltel
65. Midori Mersai
66. Rennetta D. Meyar
67. William T. Mitchell
68. Karen R. Mobel
69. Ephraim Ngirachitei
70. Itwong Ngiraikelau
71. Kurt Ngiraked
72. Annalisa Ngiraklei
73. Leonard Ngiramengior
74. Ngiradkei Ngiramengior
75. Mason S. Ngiramolau
76. Ann Sabra Ngirarorou

We Guarantee Quality and Excellence

77. Sebastian Ngiratrang
 78. Teongel Ngirkelau
 79. Tanya Ngirkuteling
 80. Tarmau T. Ngirmang
 81. Glendalynn N. Ngirmeriil
 82. Joshua Ngirngebedangel
 83. Adora Nobuo
 84. Franson Oiterong
 85. Jay G. Olegeriil
 86. Deikola Olikong
 87. Marlyne Olkeriil
 88. Merelyne Omelau
 89. Ala-Lofty Ongalibang
 90. Jalavenda P. Osima
 91. Robert Ramarui
 92. Gaylord Rdechur
 93. Herman Rdechur
 94. Elia Rdiall
 95. Vernice Rechebei
 96. Winifred Recheiungel
 97. Lester Rekemsik
 98. Hilda N. Reklai
 99. Ruskey Remoket
 100. Bruce S. Rimirch
 101. Richard Saburo
 102. Dilmai Saiske
 103. Uroi N. Salii
 104. Grace S. Salvador
 105. Dilubech Samil
 106. Rogelio G. Santos
 107. Ligaya T. Sara
 108. J.Norman Sokau Sato
 109. Murais Sebangiol
 110. Gabriel Sekool
 111. Felix Sengebau
 112. Sheree Sengebau
 113. Rosendo Skang
 114. Sharleene T. Skebong
 115. Tchuzie Tadao

116. Ezra Takeo
 117. Thomas Taro
 118.. Jerry O. Taroy
 119. Frutoso U. Tellei
 120. Patrick U. Tellei
 121. Marianne Temaungil
 122. Maria L. Teruzi
 123. Rebechall Dalton Thomas
 124. Leona Tkel
 125. Wiles Tmecherur
 126. Gibson S. Towai
 127. Dannies Uehara
 128. Omdasu Tmetuchl Ueki
 129. Rogelio D. Vergara
 130. William O. Wally
 131. Joel G. Yabes
 132. Grace Yalap
 133. Johvanna B. Yaoch
 134. Vernice Yuzi

PCC Endowment Bi-Weekly Contributors	Number	Amount
National Government (ROP)	625	\$ 36,014.90
Palau Public Utilities Corporation (PPUC)	17	\$ 975.84
Social Security Administration (SS)	2	\$ 130.00
Palau Community Action Agency (PCAA)	11	\$ 815.62
Koror State Government (KSG)	23	\$ 1,453.78
Palau Shipping Company Inc. (PSCI)	5	\$ 780.00
Palau Housing Authority (PHA)	4	\$ 208.00
Palau Pacific Resort (PPR)	19	\$ 1,339.00
Workforce Investment Act (WIA)	6	\$ 332.80
Palau International Coral Reef Center (PICRC)	1	\$ 26.00
Palau National Communication Corporation (PNCC)	33	\$ 1,605.00
Palau Community College (PCC)	134	\$ 14,329.55
Total	880	\$ 58,010.49

Source: Development Office and Business Office

Annual Thanksgiving Fundraising Event



PCC Fundraising Event

Thanksgiving Raffle Fundraising

The PCC Board of Trustees, President Dr. Tellei, faculty and staff, and especially the students express their gratitude and appreciation to all the donors, supporters, and friends who contributed to the annual fundraising event that was held on Wednesday, November 21, 2012 at PCC Mesekiu Bai.

CASH DONATIONS

\$5000 - Surangel & Sons Company

\$2104 - ACCJC

\$1000 - Anastacia Ramarui, APAFS, OEK House of Delegates

\$814.51 - Dr. Emais Roberts

\$500 - Bank of Guam, Del. Lentcer Basilius, HANPA

\$300 - Orion Maritime Services/Edna Raymond

Mr. & Mrs. Felix Okabe for PCC Builder's Club

\$250 - Calvo's Insurance, Palau Shipping Co.

\$200 - Ismael Anastacio

\$157 - William H. Moses

\$100 - Bilung Gloria G. Salii, Francis Matsutaro, Isaac

Soaladaob, Leebou Littler, Masa-Aki Emesiochl, Mechesil

Belau, Melekeok State Gov't, Ngarachamayong

\$50 - Del. Alexander Merep, Demei Obakrairur, Gamberlyn Ngirmeriil, Min. Johnny Gibbons, Terry & Jackson Ngiraing

\$30 - In Memory of Samuel Butelbai

\$10 - Basilia Tellei, Debbie Ngiraibai, Julita Tellei, Keobel Sakuma, Priscilla Soalabai, Vicky Luii

\$5 - Rdiall Tellei



Surangel & Sons Co. donated to PCC Endowment Fund



PCC receives donation from Delegate Lentcer Basilius

Tickets

\$1000 - Bilung Gloria Salii, Blue Bay Petroleum, Hawaiian Belau Rock, Mabuchi Construction Co, NECO Construction

\$500 - Bank of Guam, Family Surgical Clinic / Sidney Roberts, Galaxy Builders, Jezzrae Wear II, Midtown Service Station, NECO Marine, Pacific Family Medical Supply, PIE Printing & Photo Service, PITI, Topside Service Station

\$460 - T & M Kumangai

\$450 - Palau Mental Health Planning & Advisory Council

\$410 - Palau Tourism & Hospitality School of Excellence

\$300 - IA Belau Company, Ngerubesang Men's Club, Palau Pacific Resort

\$250 - Airai State Government, Koror State Legislature, Sure Save Coffee Bar, The Penthouse Hotel

\$200 - Embassy of the Republic of China, Faith Based Community Solutions/ Harry Drier, Koror State Government, NDBP, Palau Conservation Society, PCC Builder's Club, Sarah's Yum Yum Restaurant

\$150 - Kayangel State Government, Sen. Raynold Oilouch

\$120 - Matsumi Taro

\$110 - Dahlia Katosang, Leo Ruluked Jr, Palau Trading

\$100 - Caroline Skebong, Chen Masang, Class of 1983, Danka Ledgerwood, Dean H. & Julie Curtis, Dixie

Tmetuchl, FR Construction, Gloria Rodriguez, Karvin Flynn, Lee Stewart, Mason Whipps, Morita Corp.,

Mr. & Mrs. Surangel Whipps, Ngardmau State Government, Ollson Otei, Oscar Bechesrak, Palau

Royal Resort, Phelma J. Palik, Philip & Leilani Reklai, Rengiil Brothers, Romana Blailes, Rosalinda

Ongalibang, Salii Law Firm, TJ Remengesau, Toward Enterprises, Uduch Sengebau-Senior, Yobech

Toribiong

\$90 - Kliu Kangichi, Serelina Ridep

\$80 - Del. Lentcer Basilius

\$70 - Terry Li Hong

\$60 - Clarito Panaligan (Bong)

\$50 - Advin Asito, Alan Seid, Alex Ngiraing, BJ Takada, Kathleen Salii, Margeline Buan, Matthew

Cruz, Rodney Eledui Omelau, Sen. Kathy Kesolei, Soledad Garcia, Yimnang Golbuu

\$40 - Akitaya Corporation, Laura S. Mangham

Melissa Ueda, Michelle Ueda, Rogelio Vergara, Tilden Teltull

\$30 - Ewing Rudimch, Dr. Isebong Asang, Laiter

Dolmers, Lesley Adachi, Ligaya Sara, Melissa Joseph, Walker Umetaro & Kokoi Umetaro

We Guarantee Quality and Excellence

Tickets

\$20 - Arnice Yechur Yuji, Blanche Salii, Brian Melairei, Debbie Ngirabai, Delfina Sato, Dilomung Ngirkelau, Divine Ngirailemesang, Dr. Yuriko Bechesrrak, Eunice Koshiba, Frank Kyota, Fritz Koshiba, Geraldine Rengiil, Gibson Towai, Grace Alexander, Haidy Yaoch, Helen Sugiyama, Hilda Etpison, Isabella Sumang, Isebong Abbier, Jaret Reagan, Jerry Toves, Joanny Kesolei, John Wong, Laverne Merep, Maria Joseph, Maurine Alexander, Marianne Temaungil, Mayumi Remengesau, Merna Kyota, Midori Mersai, Mihaina Kodep, Miriam Isechal, Noe Yalap, Norman Sato, Om Wong, Pastora Kloulubak, Peter Elechuus, Peter Gayman, Rachel Bechesrrak, Sherry Ngirmeriil, Samantha Bells, Teruko Aitaro, Tessmarie Kodep, Tuayar Tmetuchl

\$10 - Aberlynn Ngiruos, Abraham Ngiruos, Yosko Aichi Alene Reklai, Alfonsa Koshiba, Ifonso Kumangai Jr. Anke Mayer, rtin Hideyos, Bibbie Kumangai, Bradley Kumangai, Branden Kumangai, Calista Decherong, Chuuk Student Org., Clint Mersai, Clyde Yaliwelimar Conner Ellechel, C. Remeliik, Dalton Thomas, Deborah Sebalt, Desiiu Ngirkelau, Dichil Nakamura, Dinahlee Thomas Erica Remengesau, E-van Ongnung, Ewing Rudimch Glendalynn Ngirmeriil, Grace Merong, Helenda Oimei Holly Farlin, Hugler Imetengel, Hunter Yates, Imrur Remengesau, Ismael Worswick, Ivie Rudimch, Jeanne Immanuel, Jemmy Blelai, John Techitong, Jon Vogt, Joshua Kloulubak, Julie Bowen, Julita Blibei, Junior Mariur, Katei Dengokl, Kautherael Keane, Kirbi Sikyang, K-La Shiro, Kosrae Student Org., Kualteruich Remengesau, Kwaj Ngirmang, Leo Mendiola, Leona Tkel, Lesley Ngiramolau, Loyola Darius, Maireng Sengebau, Margaret Kumangai, Marina Tmur Kumangai, Mark Rubasch, Martha Koshiba, Merraoch Uchel, Michael Lukas Miguel Delos Santos, Ochob Ngirkelau, Oide Kingzio, PCC Paddlers, Pohnpei Student Org., Portiana Franz, Pracy Mesubed Rebecca Tekriu, Reuben Ngirakesau, Richard Misech Jr., Richard Ngiratrang, RMI Student Org., Rose Aliven-Kohama, Ryan Zinchefsky, Salii Akitaya, Scott Weers, Seth Techitong, Shelby Masami, Shirley Koshiba, Sisca Vogt, Tanicia Alexander, Ted Glenn, Ten-ten Polycarp, Theodore Rengulbai, Thomas Remengesau, Trishia Alexander, Ubai Kingzio, Volette Polloi, Williana Shiprit, Yorang Roman

In Kind Donations

Carp Island Resort

One (1) Night Accomodation for Two w/ Breakfast Gift Certificate

Cliffside Hotel

Two (2) Night Accomodation Gift Certificates

Delta Airlines

Two (2) Travel Credit Voucher at \$200 each

Emamelei Restaurant

Two (2) Lunch/Dinner Gift Certificates

Fish 'n Fins

Cook Book - Palauan Recipes

Gibbons Enterprises

One (1) Large Pizza, Four (4) Ice Tea, and 5 hrs Free Internet Service Gift Certificates

Kumangai Bakery

Two (2) Pastry Gift Certificates

Melusch-Dil Beauty Shop

Two (2) \$75 worth Gift Certificates

Palasia Hotel

Four (4) Lunch Buffet, Two (2) 1 Month SPA membership & Two (2) Nights Accomodation w/ breakfast Gift Certificates

Palau Beach Bungalows

Ten (10) Night Accomodations Gift Certificate

PCC – CRE

One (1) 45 lbs. Cooler of Fish and Two (2) Piglettes Gift Certificate

PNCC

Five (5) Airtime cards and Five (5) Internet Card

Sonia's Beauty Salon

Four (4) \$25 worth Beauty Package Gift Certificate

Surangel & Sons Company

\$5,000 worth Household Items

The Penthouse Hotel

Dinner for two (2) worth \$25 each.

Tiuladokow Woodshop

Five (5) Canoe Racing Paddle, Ten (10) Flower Pot Stand, Ten (10) Wooden Bench, Two (2) Tables & Two (2) Ongerkor

United Airlines

Two (2) Round Trip tickets to Philippine & Guam

WCTC

\$2,500 worth of Household Items

The College receives and continues to raise money to support the endowment fund through varied ways:

- **Ten Percent (10%) of PCC Bookstore's Daily Sales**
- **Ten Percent (10%) of Monthly Proceeds From Market Vendors in PCC Bookstore**
- **Ten Percent (10%) of Sales From the Cafeteria Market Vendors**
- **Space Rental Sales**

**RECIPIENTS OF
FALL 2012 - SPRING 2013
PCC-BASED SCHOLARSHIPS**



Moylan's Insurance Underwriter

Ms. Dilmeang Ishim
Ms. Shari K. Nicholas

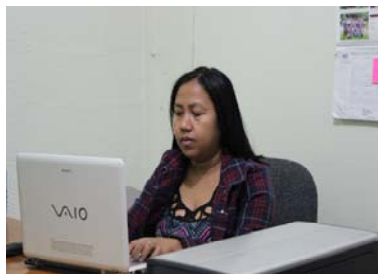
Pierantozzi Scholarship

Ms. Ciara E. Haruo
Ms. Kornelia I. Thomas

Prince Leeboo Scholarship

Mr. Sngeward Melareie
Ms. Donna Ngiraungil

Institutional Research Office



IR analyst working on a presentation.

Mission

To enhance institutional effectiveness by providing systematic, timely and accurate information along with analysis to support planning and decision making processes.

Key Objectives and Services Performed

Institutional Research Office provided support services - analytical, methodological, and statistical expertise to the college community, consultation on research design, survey development and administrations, preparation of decision support materials to academic and administrative units of the college.

Survey Reports and Analysis

Business Office Clients Survey
Cafeteria Satisfaction Surveys
Counseling Services Feedback Survey
Library Service Evaluation
Maintenance and Security Unit Survey
Online Lab Evaluations
Recreation Unit Service User Survey
Student Evaluation of Instructors and Course
Student Housing Service User Survey

Survey Instruments

Board Meeting Evaluation
Board Annual Evaluation
Library Service User's Satisfaction Evaluation
Dormitory (Housing Unit User Survey)

Research Activities

The office has released the 2012-2013 PCC Fact book that provided facts and information about the college, its students, retention, graduation, finances, faculty and staff. The fact book is primarily based on fall data. Trends on Enrollment, Retention and Graduation Rate are included in the fact book.

Institutional Strategic Plan

IRO prepared the 15 Year Institutional Master Plan Report Card. The Report Card assessed the goals and accomplishments of the 15-Year Master Plan. It presented the status about the four Strategic Directions' goals and objectives.

Institutional Strategic Plan

The office has released the 2012-2013 PCC Fact book that provided facts and information about the college, its students, retention, graduation, finances, faculty and staff. The fact book is primarily based on fall data. Trends on Enrollment, Retention and Graduation Rate are included in the fact book.

External Reporting

Institutional Research Office provided and verified data for federally-mandated reporting requirements to the Integrated Postsecondary Education Data System (IPEDS). IPEDS is a system of survey components that collects data from postsecondary education institutions. These data are used at the federal and state level for policy analysis and development; at the institutional level for benchmarking and peer analysis; and by students and parents to aid in the college search process.

National Center for Education Statistics (NCES) Integrated Postsecondary Education Data System (IPEDS) Surveys:

- IPEDS Fall Collection Surveys (Institutional Characteristics, Completions, and 12-Month Enrollment)
- IPEDS Winter Collection Surveys (Human Resources)
- IPEDS Spring Collection Surveys (Finance, Financial Aid, Graduation Rates, and 200% Graduation Rates)

Furthermore, the office was also responsible for overseeing the coordination, collection and submission of information to College Board and Peterson's Annual College Survey.

External Professional Activity

The office also provided comprehensive report for 2013 Stanford Achievement Test (SAT) for Palau Private Schools (Elementary and High School). The report provides descriptive summary, trend and yearly comparison.

Affiliations

Institutional Research Office is affiliated with the following agencies/bodies:

- AIR (Association for Institutional Research)
- PacAIR (Pacific Association for Institutional Research)
- Data Alliance member of REL (Regional Educational Laboratory)



Institutional Assessment Committee

Administration & Finance

The Administration & Finance Department supports the mission of Palau Community College through effective management of the financial, human, physical, and technological resources of the College. It is also responsible for dining services and campus security.

The Vice President of Administration has worked closely with his management team to improve the delivery of essential services, coordinate all construction projects, and develop and implement maintenance programs for College facilities to ensure compliance to government and state regulations. The improvement effort is in line with the 15-Year Institutional Master Plan.

Human Resources

Mission

The Human Resource Division (HR) is responsible for the recruitment, training, development and retention of PCC employees. Working in partner with college employees, HR hopes to keep PCC a competitive and desirable place to work for. We want all our employees to know that PCC's HR Division is an advocate for its most important resource – its people!

Personnel

The Human Resource Division has two full time employee:

- Director
- Personnel Manager

Programs and Services

- Coordinate annual employee performance and merit review.
- Responsible for the formation and renewal of employment contracts with the direction of the hiring or renewing department.
- Group Life Insurance and Health Insurance.
- Work to assist all departments/divisions by providing trainings as requested or supported by evaluations.
- Ensuring adherence with PCC's Personnel Rules and Regulations Manual.
- Coordinating SAT 10 testing to local schools.



Employee receiving recognition for years of service

Highlights

- Moylan's NetCare Group Life Insurance Enrollment
- Calvo's Select Care Health Insurance Enrollment
- Annual employee recognition
- Group Life Insurance was reinstated.
- PCC joined the National Health Insurance.
- PCC Fitness program was implemented as a health-oriented strategy to address National Non-Communicable Diseases (NCDs) State of Emergency initiative.

Professional Development

The Human Resources worked with Continuing Education and other offices to meet specific training needs of college employees.

Services

- Periodic review of the Personnel Rules and Regulations Manual (PRRM)-Currently Ongoing.
- Improve and expand ongoing staff and faculty development programs-Currently Ongoing.
- Establish benefits for Faculty and Staff such as group life and health insurance, and retirement.
- Have in place diverse, qualified and appropriately credentialed personnel - Currently Ongoing.

New Hires of 2013:

Full-time:

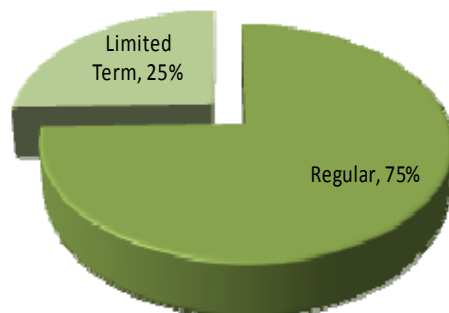
Dachelbai Danielle - Supply Clerk, Cafeteria
 Lay, Laura - Associate Professor, Library and Information Services
 Minor, Stephanie - FWS Coordinator
 Tadao, Kesina - Accounting Technician, Business
 Tebelak, Oliver - Cook, Cafeteria

Limited-term:

Banphis, Mary - Library Assistant
 Cason, Tennyson - Instructor, Education
 Ford, Janyssa - Office Clerk, President's Office
 Morei, Elicita - Instructor, English
 Polloi, Volette S. - Instructor Assistant, Academic Affairs
 Rengiil, Cherie Lynn - Office Assistant, Development
 Sumang, Hosea - Security Guard, Physical Plant
 Tun, George Yanruw - AC Assistant, Physical Plant

FULL TIME EMPLOYEES BY CONTRACT

	Male	%	Female	%	Total	%
Regular	60	45%	72	55%	132	75%
Limited Term	30	67%	15	33%	45	25%
Total	90	51%	87	49%	177	100%



FULL TIME EMPLOYEES BY CONTRACT

Regular						
	Male	%	Female	%	Total	%
Faculty	15	47%	17	53%	32	24%
Administrator / Staff	45	45%	55	55%	100	76%
Total	60	45%	72	55%	132	100%

Limited Term						
	Male	%	Female	%	Total	%
Faculty	6	60%	4	40%	10	22%
Administrator / Staff	24	69%	11	31%	35	78%
Total	30	67%	15	33%	45	100%

Physical Plant– Maintenance

Professional Development Training

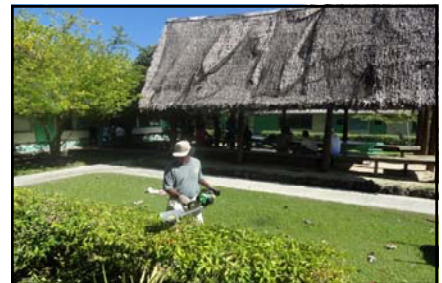
Solar System Training - Clement Kazuma, Rodney Kazuma, Yoshi Aki Okabe

Service Area Functions

- Custodial Services
- Grounds maintenance and landscaping
- General maintenance services
- Air Condition and ventilation services plumbing
- Sidewalks, steps and parking lots repair and repainting
- Logistical support for all campus events
- Building interiors and exteriors:
 - ◆ Continuing Education Training Room floor elevation.
 - ◆ Continuing Education Study Area.
 - ◆ PCC Boundary Fencing
 - ◆ Dorm A, B and C repairs
 - ◆ Bathroom Storage
 - ◆ STEP-UP Laboratory



Faculty Bungalow



Campus Landscaping

Completed Projects

- Refurbish new Maintenance Office
- Completion of Maintenance Office
- Completion of Counseling Extension
- Completion of Upward Bound Extension

Security Services

Ensure the security of the students, staff and facilities.

Community Services

- Completion of shelves for public schools
- Construction of coffins/caskets.
- Assist statewide clean-up at Peleliu and Angaur after Super Typhoon Bopha.



AC repair



Casket/Coffins

Finance

Mission

We provide our customers (Students, Employees, and the Community) service in a professional, cost-effective and innovative manner consistent with values of integrity, team work, stewardship, politeness and respect.

Personnel

The Finance Division currently has seven (7) full-time personnel:

- Director of Finance
- Accountant Supervisor
- Student Account
- Account Technician (4)



Business Office Staff

Programs and Services

The Finance Division is responsible for the preparation of the overall College budget. It directs budgetary controls in disbursing, accounting and auditing of funds and maintains a system of financial and related statistical reporting. The Finance Division continues to monitor and assess its supporting services for improvements. In support of the green movement, the Finance Division is providing e-services for reports and forms requested by students, employees and the community.

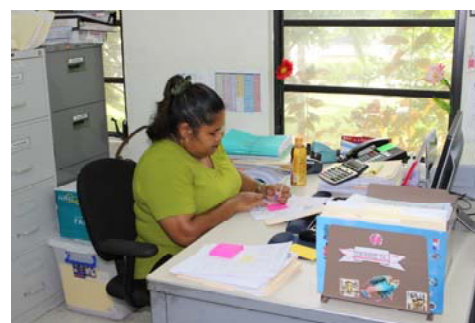
Professional Development

- Association of Pacific Island Public Auditors Training (APIPA)
- Pacific Association of Financial Aid Administrators (PacFAA)

Highlights

During this reporting period, the Finance Division hired new staff:

- Account Payables Technician
 - General Accounting Technician/Purchasing
 - Payroll Technician
-
- 100% of business personnel are now bi-weekly endowment donors.



Accountant/Business Supervisor

Computer Services

Mission

To sustain a user friendly and accessible network service and computer system which provide reliable and secured information for the functions of the College.

Highlights

In July 2013, the College purchased the TracDat software of Nuventive to help with the college assessments, data use, and processing. It is a technological resource breakthrough used by academic and non-academic departments for managing their assessment needs. This will also allow users to view assessment plans and uniform data reporting across departments/units/offices. A series of meetings between TracDat consultants and the college representatives via the Go-ToMeeting device has began the work of phase 1 which is to set up and configure the program for academic programs and departments to be readily available for use by Fall 2013. The second phase will commence right after academic programs and departments which will include non academic programs and units such as Student Services, Library, and other learning support services.

In August 2013, the Technology Consulting in the Global Community Program from Carnegie Mellon University (CMU) under the direction of Dr. Joe Mertz assisted the college in deploying ICT solutions in reconnection of PCC networking system to provide a more efficient means of communication. Two student consultants were able to map and reorganized existing network system by developing a security system, network backbone design, and identifying and implementing sustainable email service from PCC Data Center to Google's Data Center. In addition, the student consultants assisted in creation of the college web site based on CMS that is more in depth, appealing and easier to navigate and hence redefines PCC's web presence toward the targeted audience, the prospective students. Faculty members.

Technology Plan

The college technology plan that was developed for 5 years, from year 2007 – 2012, ended in December 2012. The 2nd cycle of the PCC 2013-2017 Technology Plan was approved in December 2012. The Technology Resource Committee (TRC) set a block time to review the technology plan goals and objectives and made revisions for the next five years.



Computer Services staff



Computer Technician monitoring system network

Food Service

Mission

To provide three (3) healthy meals a day in a clean and conducive environment to help promote the academic, cultural and social needs of students

Goals

- The unit provides three (3) healthy meals a day to students.
- The unit provides a clean and conducive environment to ensure safety of its clients.

Objectives

Achieve 65% student rating of satisfactory or better twice (2x) a semester, using below types of assessment tools, Client Satisfaction Survey and Suggestion Box Comments.

- *Fall 2012 - Satisfaction Survey conducted on October 9, 2012*
- *Fall 2012 – Satisfaction Survey conducted on December 10, 2012*
- *Spring 2013 – Satisfaction Survey conducted on April 24, 2013*
- *Spring 2013- Satisfaction Survey conducted on May 16, 2013*

Personnel

The Food Service has seven full time staff including the supervisor, coordinator, supply clerk, lead cook, and three regular cooks.

Highlights

Student Meals

Number of Servings: 15,793

Other Services Provided

Number of Work orders performed: 143

Services provided to each activity from January to December 2013 at the Palau Community College Cafeteria:

- Daily meals for students – Breakfast, Lunch & Dinner Fall 2012- 112 dorm residents
- Daily meals for students - Breakfast, Lunch & Dinner Spring 2013 – 100 dorm residents
- Daily meals for students - Breakfast, Lunch & Dinner Summer 2013 – 70 dorm residents
- Daily meals for students - Breakfast, Lunch & Dinner Fall 2013 – 98 dorm residents
- UB students – Lunch only (200 servings for five days per week in summer)
- Charter Day – 250 servings
- Graduation Day – 800 servings.
- Christmas Luncheon – 300 servings
- End of the Year Get Together – 600 servings
- New Student Orientation – 325 servings
- End of Semester Activity – 115 servings
- Female/Male Retreat – 107 servings
- Tuesday Night Program - 460 servings
- PCC Mesekiu Basketball Games - 412 servings

We Guarantee Quality and Excellence

Various services provided through outside work orders.

- MECHESIL BELAU WOMEN'S CONFERENCE (August 28, 2013) – 500 servings
- Ministry of Education – 250 servings
- Palau Visitors Authority – 140 servings
- Workforce Investment Act – 150 servings
- 911 Ceremony – 200 servings

Community Involvement

- Assisted Mechesil Belau and catered lunch for 500 servings for Women's Conference on August 28, 2013.
- Cater to Ministry of Education Conference in July 2013 for 250 servings.



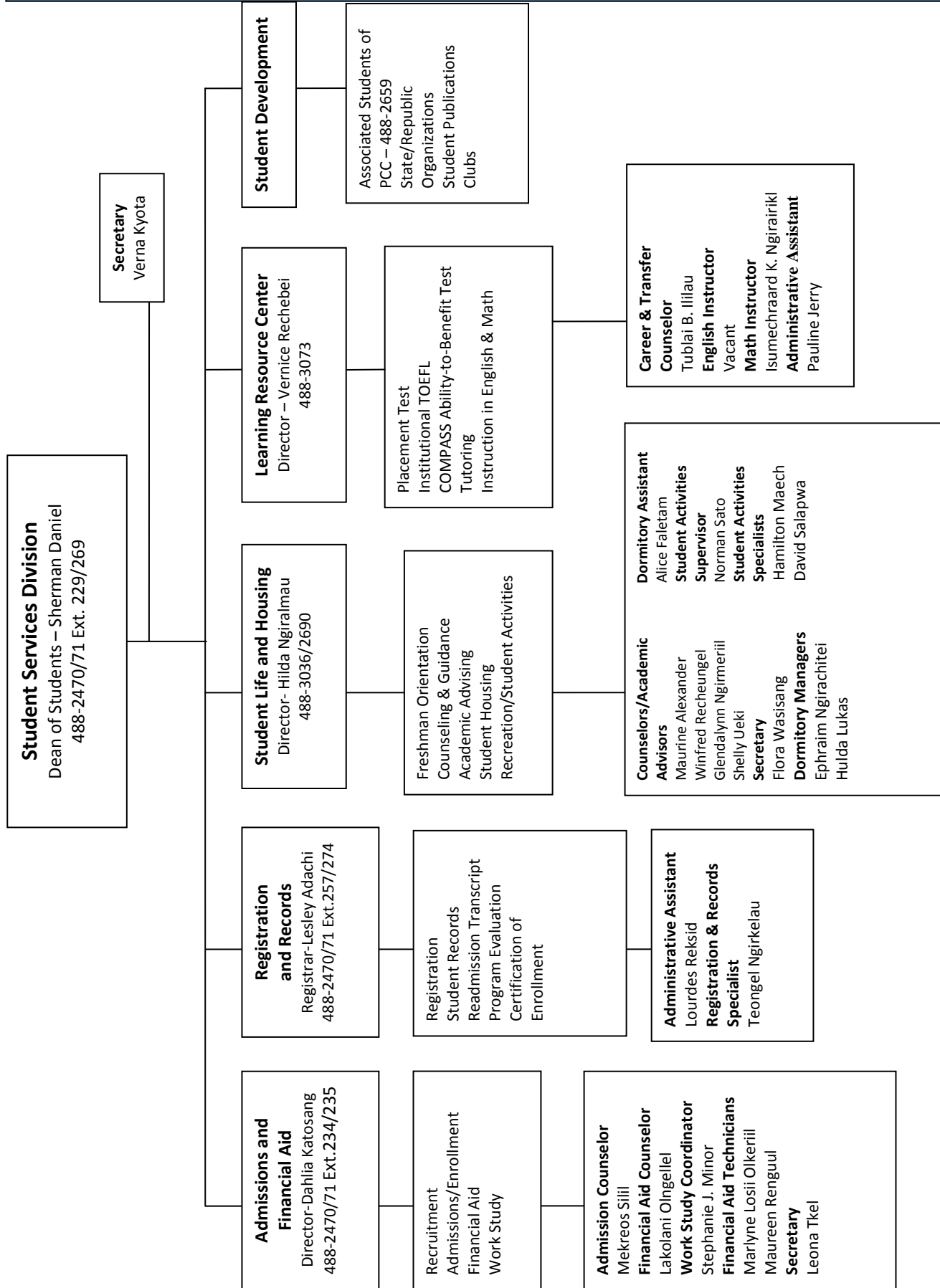
Students being served by Cafeteria staff



Teachers Training Academy participants at Cafeteria



UB summer participants



**PALAU COMMUNITY COLLEGE
SCHOOL YEAR 2012 - 2013**

ASPCC OFFICERS

President:	Yosko C. Aichi
President - elect:	Kornelia I. Thomas
Secretary:	Mariah K. Kual
Treasurer:	Donna J. Ngiraungil

NATIONAL/STATE LEADERS/SENATORS

Chuuk	(CSO President):	Pedreama E. Rechy
Kosrae	(KSO President):	Tolenoa Tulensru
Pohnpei	(PSO President):	Maynard Solomon
Yap	(YSO President):	Paulus W. Tamannalon
Marshall	(RMI President):	Ronny Thomas
Palau	(PSO President):	Elsi D. Tellei

CLASS REPRESENTATIVES/SENATORS

Freshmen Representatives:	Kamrul Zaman Ewing Rudimch
Sophomore Representatives:	Kesina K. Tadao Sean U. Lawrence

ADVISOR

Tim Mitchell

We Guarantee Quality and Excellence

Mission

The Division of Student Services directly supports student learning, retention, and success. We engage students in educational, cultural, social, and intellectual programs that enrich the student experience, foster personal development, and promote responsible citizenship, and social responsibility.

Personnel

The Student Services Division is composed of four units under the supervision of the Dean of Students. The units are: Admissions/Financial Aid, Registrar & Records, Student Life, and Learning Resource Center. The units are managed by three (3) directors and a registrar that make up the management team with the dean. The division has a total of 26 full-time positions with nine (9) professionals and seventeen (17) classified staff who provides academic and non-academic support services to students.

Programs/Services:

The Dean of Students continues to coordinate the master's degree in educational leadership and bachelor's degree in education through a partnership between Palau Community College (PCC) and San Diego State University (SDSU).

In September 18, 2013, an election for the 2013-2014 Student Trustee and ASPCC officers and senators was held. Ms. Dizzette U. Dolmers, majoring in Stem Disciplines program was elected to the Board of Trustees at the College. Ms. Kornelia I. Thomas, majoring in Liberal Arts was elected President of ASPCC for school year 2013-2014. A total of 14 officers and senators make up the ASPCC student government. The Registrar & Records Office continues to provide the following services each semester.

- Registration fx/Scholar Administrative Software and the Campus portal have been upgraded and counselors can view student's record on line.
- Faculty can now submit grades online
- Processing Readmission forms
- Publishing the schedule of classes
- Registration and schedule changes
- Grade reporting
- Course withdrawals/clearance
- Processing academic transcripts
- Processing change of major
- Verification of Enrollment Status
- Reporting of enrollment trend and students' data
- Process graduation applications
- Academic Certification
- Ordering degrees, caps & gowns



Registrar assisting college staff



Director Katosang assists student with her Financial Aid forms.

We Guarantee Quality and Excellence

The Registrar & Registration and Records Specialist conducted a presentation on the Family Educational Rights and Privacy Act (FERPA) to all SS100 "Introduction to College" sections in Fall, Spring and Summer.

The Director of Admissions & Financial Aid conducted a financial aid workshop for financial aid staff and appropriate college staff from various offices regarding the new federal updates including the new changes for 2012-2013 Free Application for Federal Student Aid (FAFSA). This also included the updates on the federal regulations that impacts PCC students and overall administration of financial aid programs.

Federal Pell Grant Reports were processed and sent to the grant office on a monthly basis throughout the year. The Fiscal Operation report was processed and sent on October 1, 2012 to report the expenditures for the 2012-2013 and request funding for the award year 2013-2014. Monthly reconciliation between the financial aid office and the business office was done regularly with the Financial Aid Technician and Student Account supervisor. Federal Work-Study Placements take place at the start of each semester and the work-study payrolls were collected and processed and forwarded to the business office to prepare the paychecks for students on a bi-weekly basis.

In February 2013, recruitment for off-island high schools throughout the Micronesian region was done through mail. Admissions and Financial Aid materials were sent to all the high schools principals and counselors.

Within the same month of February 2013, Director Dahlia Katosang and Admissions Counselor Mekreos Silil conducted recruitment activities where they visited high schools in Palau to promote the College and its programs and services offered and discussed financial aid programs and requirements. Admissions & Financial aid staff assisted the director and counselor during the recruitment visits. A total of 247 seniors (prospective students) with their parents attended and completed the admissions application forms.

In March 2013, Director Dahlia Katosang and Admissions Counselor Mekreos Silil conducted financial aid sessions for continuing students to discuss federal updates and provided assistance in completing 2013-2014 financial aid forms including filing FAFSA electronically. A total of 523 continuing students attended the sessions and completed financial aid application forms.

In May 2013 Admissions Counselor Mekreos Silil also conducted meetings with the students from FSM and the students of the Marshall Islands. The purpose of the meetings was to assist the students with their state scholarship application forms.

In September 2013, Director Dahlia Katosang and Admissions Counselor Mekreos Silil conducted series of meetings with continuing students regarding the Financial Aid Satisfactory Academic Progress (SAP) policy for financial aid.

We Guarantee Quality and Excellence

In September 2013, Counselor Mekreos Silil met with 25 San Diego State University cohort students regarding their Financial Aid application forms for award year 2013-2014 and also 2013-2014 Concurrent Enrollment Agreements.

For school year 2012-2013, out of the total 533 admission applications received from prospective students within Palau and throughout Micronesian region, 378 were completed and accepted. From 378 accepted 263 actually enrolled..

During the Award Year 2012-2013, a total of 1,400 financial aid applications were received. Out of 1,400 applications received, 1,035 financial aid awards were processed for both new and continuing students, in the amount of \$2,834,608.00.

New Students Orientation

- Fall 2012 – 99 students attended the orientation
- Spring 2013 – 12 students attended orientation
- Summer 2013 – 22 students attended orientation

Group Counseling

- Fall 2012 – 39 students attended session
- Spring 2013 – 189 students attended session
- Summer 2013 – 16 students attended session

Study Skill & Information Workshop

- Fall 2012 – 81 students attended the workshop
- Spring 2013 – 77 students attended the workshop
- Summer 2013 – 13 students attended the workshop

Dorm Residents Probation Session

- Fall 2012 – 11 students attended the session
- Spring 2013 – 16 students attended the session
- Summer 2013 – 16 students attended the session

SS100 – Introduction to College

- Fall 2012 – 151 students enrolled into the course
- Spring 2013 – 50 students enrolled into the course
- Summer 2013 – 37 student enrolled into the course

For school year 2012-2013 the Learning Resources Center provided services including instruction, tutoring, assisted lab, career/transfer counseling, PCC Placement Tests, and Institutional TOEFL as follows:

- Tutoring – 1,112 students
- Assisted Lab – 3,345 students
- Institutional TOEFL – 63 students
- PCC Placement Tests – 385 students
- Career Counseling/Activities – 824 students
- Transfer Counseling/Activities – 424 students

We Guarantee Quality and Excellence

The Asian American Native American and Pacific Islander Serving Institution (AANAPISI) Program is federally funded for a five-year cycle, 2011 - 2016, in the amount of \$1,411,596.00. The budget for the second year of the program (2012 - 2013) is \$362,762.00. The overall purpose of the program is to enable institutions to improve and expand their capacity to serve Asian Americans, Native Americans and Pacific Islanders. The program is designed to increase the retention, graduation and transfer rates of PCC students. The three main focus areas include: Tutoring, Career/Transfer Counseling and Technological Access.

Annual Highlights

LRC established a 2nd computer lab with 35 computers, 7 printers and 2 Infocus Projectors through the AANAPISI program to support student learning.

The LRC administered Placement Test for Palau Supreme Court Applicants.

Staff Development

The Registrar attended the 2013 Strengthening Student Success Conference.

The Director of Admissions/Financial Aid attended the Federal Student Aid (FSA) annual conference in November 2012 and provided training to office staff plus other college personnel including students.

The Director of Admissions/Financial Aid and Financial Aid Counselor attended the Pacific Financial Aid Association (PacFAA) conference in April 2013 and provided training upon her return.

The Dorm Assistant Alice Faletam and Administrative Assistant Flora Wasisang enrolled in IT 105 - PC Office Application in Fall 2012 and Spring 2013.

The Recreation Specialist Hamilton Maeach attended the 25th Annual Health & PE Teacher's Workshop on November 12-14, 2012.

The Director of Learning Resource Center and Career/Transfer Counselor attended a meeting for Higher Education Programs in Washington D.C. in March 2013. Topics included: Implementing Grant Activities; Strategies for Success; Annual Performance Reports; and Funding Opportunities.

The Dean of Students attended Strengthening Student Success Conference in San Diego on Spring 2013.

We Guarantee Quality and Excellence

Student Housing Accommodations

- Fall 2012 – 94 PCC students and 3 navigators resided at the dorms.
- Spring 2013 – 99 students and one (1) navigator resided at the dorms.
- Summer 2013 – 52 students, twenty-three (23) guests and one (1) navigator resident at the dorms.

New Dorm Residents Orientation

- Fall 2012 – 49 new residents attended
- Spring 2013 – 7 new residents attended
- Summer 2013 – no new resident in summer 2013

Study Hall

- Fall 2012 – 130 students utilized the college housing study hall for a place to study
- Spring 2013 – 224 students utilized the college housing study hall for a place to study
- Summer 2013 – 60 students utilized the college housing study hall for a place to study

Tuesday Night Program

- Fall 2012 – 222 students attended the programs
- Spring 2013 – 195 students attended the programs

Male Retreat

- Spring 2013 – 70 male students attended the retreat in Peliliu State

Female Retreat

- Fall 2012 – 25 female students attended the retreat at Kuabes, Ngaraard

The College Recreation planned and organized College Intramural games every semester; Intramural sports of Basketball, Volleyball, Co-ed Softball, Billiard and Table Tennis tournaments were held during fall and spring and the summer sessions.

Intramural basketball	Fall 2012 – 150 students participated
National basketball	Fall 2012 – 15 students participated
	Spring 2013 – 12 students participated
Volleyball	Spring 2013 – 30 students participated
Billiard Spring	2013 – 28 students participated
Table Tennis	Spring 2013 – 25 students participated



Fall 2012 Female Retreat



Tuesday Night Program at PCC Cafeteria

Facilities and Equipment

In Fall 2012, an extension to the existing Student Life office was constructed to accommodate the newly hired counselor/advisor. Two additional air-conditioners were purchased and installed the new office.

Committee/Association Memberships

The Dean of Students, Directors of Student Life, Admissions/Financial Aid, and Learning Resource Center and the Registrar are members of Retention Committee. The Dean of Students serves as chairperson of the committee.

The Dean of Students and the Registrar are members of the Committee on Programs & Curriculum (CPC) as a representative from the division.

The Dean of Students, Directors of Student Life, Admissions/Financial Aid, and the Learning Resource Center are members of the Executive Committee.

The Registration and Records staff, Director Reklai, Dorm Manager Ngirachitei, and Student Activity Supervisor Sato served on the 2012-2013 Charter Day and Graduation Committees.

All staff from the Student Services Division are active members of Classified Staff Organization (CSO) with the Registrar as the organization's elected president.

The Dean of Students is a member of MOE College Access Challenge Grant Board of Directors.

The Registration & Records Specialist is a member of Special Education Advisory Council.

The Registrar is a member of the Head Start Program Policy Council.

The Registrar, Registration & Records Specialist, and Admissions Counselor are members of American Association of Collegiate Registrars and Admissions Officers (AACRAO)

Registrar is a member of Pacific Association of Collegiate Registrars & Admissions Officers (PACRAO).

Director Katosang is currently a member of the following financial aid association for federal student financial aid programs: Pacific Association of Financial Aid Administrators (PACFAA).

Director Reklai is an Advisor of Beta Omicron Zeta, Palau Community College Chapter of the Phi Theta Kappa, an International Honor Society.

We Guarantee Quality and Excellence

Student Activity Supervisor Sato is an advisor for Republic of Palau Student Organization (RPSO)

Student Activity Supervisor Sato is member of Belau Softball Association

Recreation Specialist Maech is a member a of Palau Basketball Association

Recreation Specialist Maech is a member a of Palau Basketball Coach Association

Recreation Specialist Maech is a member a of Palau Basketball Referee Association

Director Reklai is a chairperson of Student Review Board (SRB)

Counselors Alexander, Recheiungel and Ngirmeriil are active members of the American Counselors Association (ACA)

Counselors Alexander, Recheiungel and Ngirmeriil are members of the College Faculty Senate Association

Counselor Alexander is an Advisor for Yap Student Organization for SY2012-2013

Counselor Recheiungel is an Advisor for Pohnpei Student Organization for SY2012-2013

Dorm Manager Ngirachitei is a member of Foreign Investment Board, Republic of Palau

Dorm Managers Ngirachitei and Lukas, Supervisor Sato, Recreation Specialist Maech and Advisor Recheiungel hold certificate for First Aid and CPR.

Assessment

One Year Retention Rate (Fall to Fall)			
	Fall 2012	Fall 2013	Percentages in Difference
Retention Rate of First-time Full time & Part-time degree-seeking students	52%	54%	2%
Enrollment Trend			
	Fall	Spring	Summer
2012	680	677	397
2013	646	592	334

Office of Admissions & Financial Aid
Admissions Applicants Summary (By State)

We Guarantee Quality and Excellence

COUN- TRY/ STATE	FA12			SP13			SU13			Total # Ap- plied	Total # Ac- cepted	Total # En- rolled
	# Applied	# Accepted	# En- rolled	# Applied	# Ac- cepted	# En- rolled	# Applied	# Accepted	# En- rolled			
China	7	0	0	2	2	1	1	0	0	10	2	1
Chuuk	57	24	11	27	13	5	0	0	0	84	37	16
Ghana	1	1	1	0	0	0	0	0	0	1	1	1
Japan	1	1	1	1	1	1	1	1	0	3	3	2
Korea	1	0	0	0	0	0	0	0	0	1	0	0
Kosrae	7	7	5	0	0	0	0	0	0	7	7	5
Marshall	14	10	8	5	3	0	1	1	0	20	14	8
Philip- pines	3	1	1	1	1	1	0	0	0	4	2	2
Pohnpei	16	11	8	1	1	1	0	0	0	17	12	9
Palau	122	88	77	44	38	33	128	107	60	294	233	170
A. Samoa	1	1	0	0	0	0	0	0	0	1	1	0
Sri Lanka	0	0	0	0	0	0	1	0	0	1	0	0
Taiwan	1	1	1	1	1	1	0	0	0	2	2	2
Yap	40	29	24	3	3	2	2	1	0	45	33	26
US*	27	20	16	6	4	3	10	7	2	43	31	21
TOTAL	298	194	153	91	67	48	144	117	62	533	378	263

Office of Admissions & Financial Aid
Financial Aid Awards Summary (By Programs)

We Guarantee Quality and Excellence

Federal Programs							
Federal Pell Grant			Federal SEOG			Federal Work Study	
Recipients	Award		Recipients	Award		Recipients	Award
765	\$2,684,995		110	\$65,500		160	\$84,113
						1035	\$2,834,608

FSM State Scholarships	
Total	
Recipients	Award
157	\$91,150

LSG Grant/Tuition Waiver					
LSG Grant			Tuition Waiver		
Recipients	Award		Recipients	Award	
21	\$21,068.46		47	\$41,895	
			68	\$62,963.46	

Overall (Unduplicated) Total Recipients	1125	Overall Total Award	\$2,988,721.46
---	------	---------------------------	----------------

UPWARD BOUND

Mission Statement: Upward Bound mission is to provide fundamental support and opportunities for participants to succeed in their precollege performance and ultimately in their higher education pursuits.

Objectives: There are six objectives for Upward Bound Program, standardized by the U.S. Department of Education. All six objectives were successfully accomplished.

Academic Performance - Grade Point Average (GPA)

Objective 1: 70% of all UB participants served during the project year will have a cumulative GPA of 2.5 or better on a 4.0 scale at the end of the school year.

A total of 110 participants were served in the project year 2012-2013, 103 or 94% of them had a cumulative grade point average of 2.5 or better on a four point scale at the end of the school.

Academic Performance of Standardized Test

Objective 2: 60% of UB seniors served during the project year, will have achieved at the proficient level on state assessments in reading/language arts and math.

Of the 110 program participants served, 32 of them were seniors with an expected high school graduation date in Spring 2013. 65% or 21 of them achieved a proficient level in reading/language arts and math on the ACT assessment test.

Secondary School Retention and Graduation

Objective 3: 70% of project participants served during the project year will continue in school for the next academic year, at the next grade level, or will have graduated from secondary school with a regular secondary school diploma.

Out of 110 participants served, 32 of them were seniors who successfully graduated from high school. Whereas 78 of them who were in 9th, 10th and 11th grades are continuing their high school enrollment at the next grade level in school year 2013-2014. As a result, 100% of total participants served either successfully graduated from high school or are continuing their enrollment in high school.

Secondary School Graduation (rigorous secondary school program of study)

Objective 4: 70% of all current and prior year UB participants, who at the time of entrance into the project had an expected high school graduation date in the school year, will complete a rigorous secondary school program of study and graduate in that school year with a regular secondary school diploma.

35 students who were admitted into the UB program had an expected graduation date in 2013. Out of 35, 97% or 34 of them completed a rigorous secondary school program of study and graduated with a regular secondary school diploma.

We Guarantee Quality and Excellence

Postsecondary Enrollment

Objective 5: 70% of all current and prior year UB participants, who at the time of entrance into the project had an expected high school graduation date in the school year, will enroll in a program of postsecondary education by the fall term immediately following high school graduation or will have received notification, by the fall term immediately following high school, from an institution of higher education of acceptance but deferred enrollment until the next academic semester (e.g. spring semester).

Of the 35 participants who had an expected graduation date in 2013, 91% or 32 of them began their enrollment in various colleges and universities in August 2013 while 9% or 3 deferred their college enrollment. With 32 students who enrolled in college, 59% or 19 enrolled at PCC whereas 41% or 13 enrolled at other colleges and/or universities outside of Palau.

Postsecondary Enrollment

Objective 6: 30% of participants who enrolled in a program of postsecondary education, by the fall term immediately following high school graduation or by the next academic term (e.g. spring term) as a result of acceptance by deferred enrollment, will attain either an associate's or bachelor's degree within six years following graduation from high school.

A total of 39 prior participants enrolled in a postsecondary education program immediately after graduation in fall 2008 38% or 15 of them have successfully attained either an associate's or bachelor's degree within six years after high school graduation.

Personnel

Seven full time and 15 part-time staff.

Services

Instruction in literature, composition, mathematics, science, and foreign language. College preparatory services including tutoring, counseling, and advising and other academic support services.

Community Involvement

The program is in partnership with various private and government agencies who provided work study programs for UB participants in summer 2013.

Characteristics	Number of Students
High School Breakdown	
Bethania High School	5
Belau Modekngel School	6
Emmaus High School	1
Mindszenty High School	34
Palau High School	50
Palau Mission Academy	14
TOTAL	110
Grade Level	Number of Students
9 th Grade	22
10 th Grade	27
11 th Grade	33
12 th Grade	28
TOTAL	110

Evaluation/Assessments

There were several ways to evaluate and/or assess the UB program. These evaluations/assessment processes includes the UB Annual Performance Report (U.S. Department of Education), an independent auditor yearly review of program performance, and a three year program review required by Palau Community College.

ACADEMIC AFFAIRS

Purpose

Academic Affairs is the arm of the college that trains, exposes, and instills in students the opportunity to:

1. Be prepared to further their education
2. Be prepared to enter the workforce

This division is responsible for all matters relating to curriculum, instruction and instructional programs, including the administration of the three schools within the college. The three schools are the School of Arts and Sciences, the School of Business, and the School of Technical Education. In addition, it creates, recommends for approval, and enforces academic policies and regulations through the Committee on Programs and Curricula (CPC).

Programs

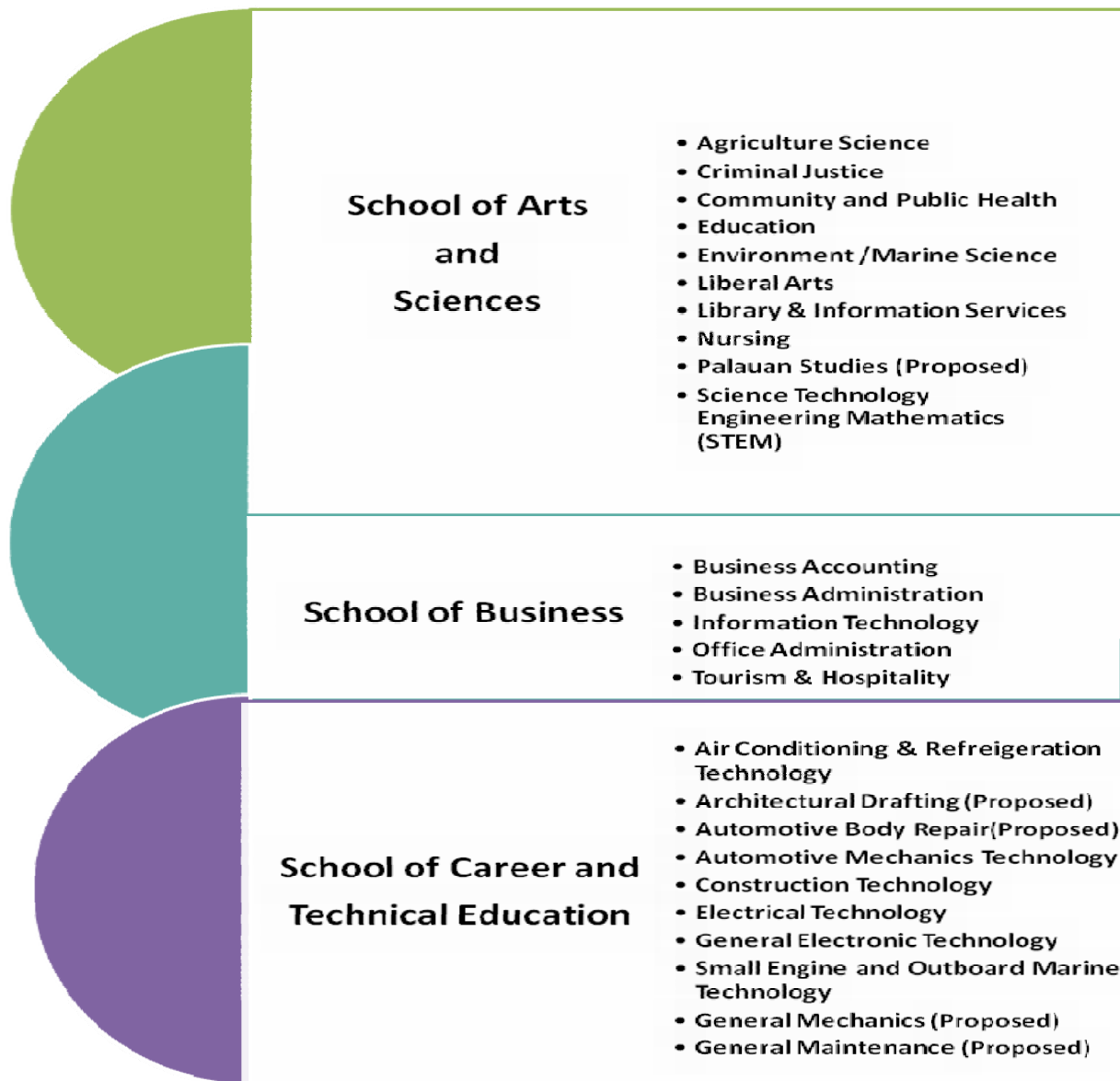
The college offers degrees in twenty (20) areas with five (5) more programs being proposed for a total of twenty five (25) in order to meet the needs of the Micronesian community. Three of the programs (Education, Tourism & Hospitality and Community and Public Health) offer tracks concentrating on different areas of studies. The Education Program has tracks in Early Childhood Education, Elementary Education, Special Education, and Secondary Education. The Tourism and Hospitality Program has tracks in Tour Services, Hotel Operations, Food/Beverages Operations, and Hospitality Management and Community and Public Health has tracks in Public Health and Emergency Health Management. Work on developing and implementing five new programs is in progress. The programs are Palauan Studies, Automotive Body Repair, Architectural Drafting, General Maintenance, and General Mechanics. Implementation dates for them are being pushed back to begin in fall 2014. Before the five proposed programs become official programs for the college to offer, the programs need approval from the College President, College Board of Trustees, Accrediting Commission for Community and Junior Colleges (ACCJC) for the Western Association of Schools and Colleges (WASC) and the United States Department of Education Financial Aid Office (USDOEFAO).



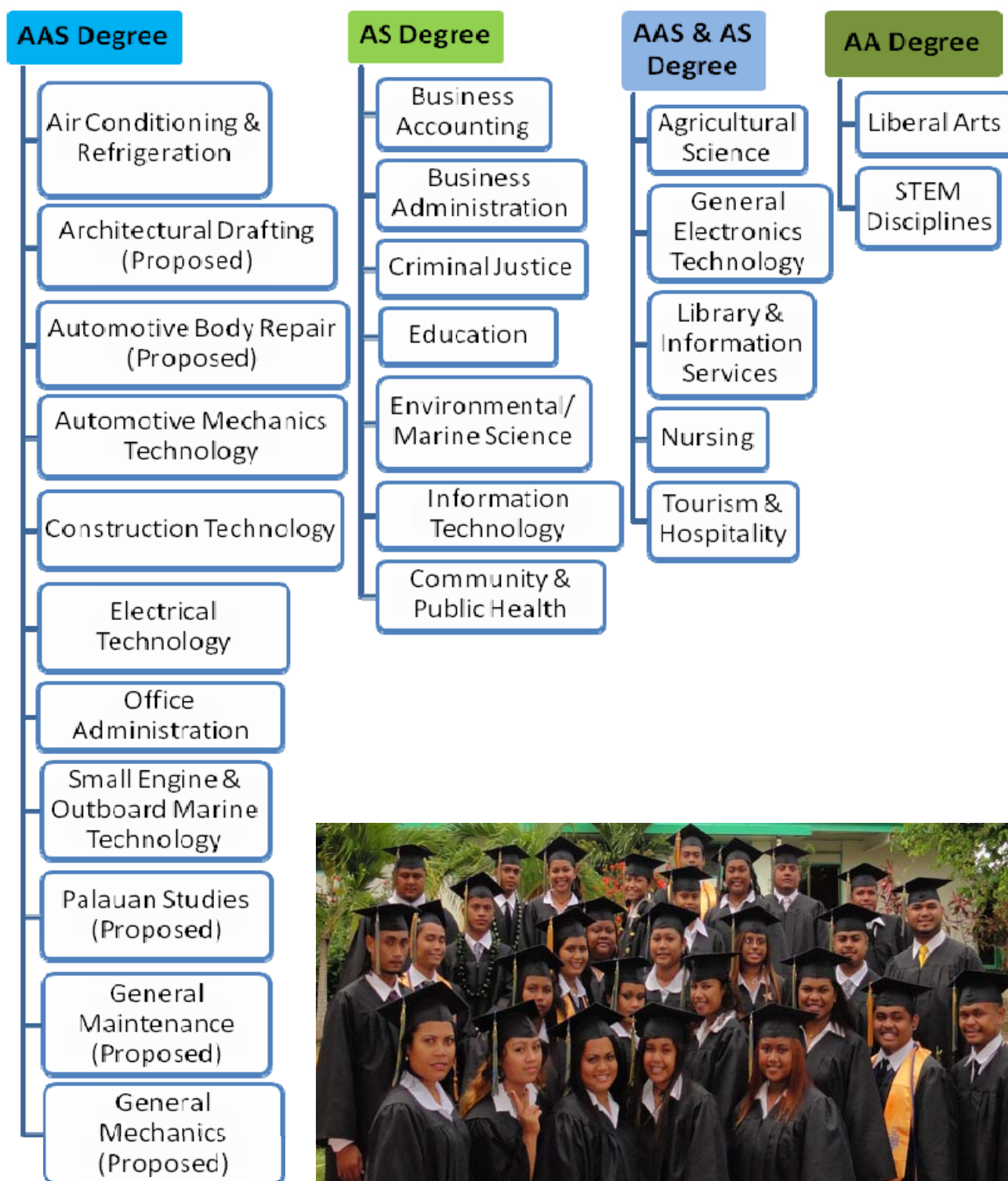
Dean Ramarui meeting with ASPCC Sophomore Rep.



Academic Affairs staff reviewing summer schedule



Palau Community College offers an Associate of Applied Science (AAS) degree, Associate of Science (AS) degree, Associate of Arts (AA) degree and Associate of Technical Studies (ATS) degree. The degrees are awarded to students who successfully complete the required semester credits under each degree program. All degree programs are accredited programs under the Accrediting Commission for Community and Junior Colleges (ACCJC) and therefore, credits are transferable to other institutions upon the discretion of the receiving institution. The ATS degree is awarded to student who successfully complete at least 60 semester credits. Curricula for this degree must be customized by student and his advisor following the AA degree curriculum format which includes specialized area courses and submitted to CPC and Dean of Academic Affairs for review and approval.



PCC Graduates

We Guarantee Quality and Excellence

As a higher educational institution, Palau Community College is required by the Accrediting Commission for Community and Junior Colleges (ACCJC) to review its degree programs/departments regularly. The College's degree programs and departments are reviewed every three years by programs/departments faculty. The degree programs/departments reviews allow revisions reflecting student and community needs where recommendations will be forwarded to the Committee on Programs and Curricula (CPC) for approval to implement changes for improvements.

The College is also required to complete Program Review Reports of all degree programs/departments required by ACCJC. The Program Review Report is a thorough report showing program/department success, strengths, and areas needing improvements. The report should also provide action plans for areas needing improvements where the action plans will need to be implemented within the next cycle of review. The degree programs that were required to do a complete Program Review Report in this reporting period were the degree programs under the School of Business namely Business Administration, Business Accounting, Information Technology, Office Administration, and Tourism & Hospitality degree programs.

DEGREES CONFERRED 2005 - 2013

	2005-2006	2006-2007	2007-2008	2008-2009	2009-2010	2010-2011	2011-2012	2012-2013
AA	3	5	6	2	14	3	12	11
AAS	1	23	41	60	57	48	48	70
AS	40	28	29	29	33	23	25	18
CA	39	3	0	0	-	-	-	-
CC	34	0	13	9	-	-	-	-
CTC		0	1	0	-	-	-	-
Total Associates Degrees	44	56	76	91	104	74	85	99
Total Certificates	73	3	14	9	-	-	-	-

Program Highlights

Agricultural Science

The Agriculture Program has on full-time and one assistant instructor who oversee the development of student learning through lectures/presentations and applications of required skills in laboratory activity. For this reporting period, the program 27 students enrolled.

Agriculture students attended the workshop in soil hosted by the Bureau of Agriculture and took various field trips to expose students to local farms in Babeldaob namely PMA farm, Bureau of Agriculture at Nekken, Taiwan Technical Mission Farm and other local piggery farms in Babelthaob.



Instructors Darold Klindworth, Alex Gachalian, Rikio Hashimoto & Ayako Oya (ICETT) with AG students.

The Japan International Cooperating Agency (JICA) and International Center for Environmental Technology Transfer (ICETT) in cooperation with the Solid Wastes Management Office (SWMO) held a seminar last February 23, 2013 at PCC Assembly Hall. It was participated with people in the community involved in the kitchen waste management program from Koror State, SWMO personnel, and PCC Agriculture students. The seminar highlighted the importance of managing kitchen waste correctly and the proper methods of converting it into a usable and productive material that will benefit state government and local farmers while promoting a clean and healthy environment.

The PCC Agriculture Program along with JICA and ICETT conducted a research entitled " THEIMPLICATIONS OF USING DIFFERENT LEVELS OF KITCHEN WASTES COMPOST ON THE PERFORMANCE OF PECHAY (*Brassica rappa* cv Hari Digma) at R&D STATION which aims to determine the effectiveness of using kitchen wastes compost to growing crops. This experiment was presented during the seminar and the data obtained from the crop growth, yield, and taste attributes were statistically analyzed, interpreted, and discussed during its presentation. The benefits of crops and the soil from using compost were emphasized by the presenters as an economic advantage in obtaining a sustainable agriculture.

Criminal Justice

The Criminal Justice program has two instructors: one full-time and one adjunct..

CJ 121 Introduction to Corrections & Correctional Administration had guest speakers Chief Julio Ringang and Officer Eugenio Kaluu from the Division of Corrections, Bureau of Public Safety. Chief Ringang and Officer Kaluu discussed the following topics:

- Function and purpose of Bureau of Public Safety Corrections Division/Institutional Procedures.
- Corrections Division Mission Statement
- Jail/prison population
- Programs offered for inmates (Rehabilitation Programs)
- Basic equipment carried by correctional officers

The topics discussed relate to the following course learning outcomes: Identify and discuss the major subsystems of correction, describe the concept of prisonization, and describe the concept of a diversion program; discuss juvenile justice corrections and conditions of confinements in juvenile facilities; and identify and discuss various rights of prisoners and various treatment programs.

CJ 221 Police Report Writing guest lecturer Ismael Aguon taught CJ students how to fill in a Bureau of Public Safety Police Report Lead Sheet and went over some basic guidelines for Police Report Writing. The topics discussed relate to the following course learning outcomes: Explain the important skills designed to record interviews, elicit and analyze crime facts; and explain terms used in standard Palau police forms, fill out forms accurately, and outline and write a crime report.

Program Activities/Presentations

CJ faculty organized and participated in the Bureau of Public Safety Cohort students recruitment by working with Glendalynn Ngirmeriil from Student Life office and Mekreos Silil from Admissions & Financial Aid office and meeting with interested police officers. As a result of this recruitment, a new BPS Cohort was formed and students began taking classes in Fall 2013.

The CJ Program participated in the Career & Technical Education Awareness Week. The CJ students and faculty talked with visiting students about the program courses and career opportunities in the Criminal Justice field. Displays included a finger-printing station, career opportunity bulletin board, homicide crime scene, photo display of drug busts by the Drug Enforcement Division of the Bureau of Public Safety, and magazines relating to the Criminal Justice system and field.



2013 CTE participants



PHS tours CJ program classroom

Community and Public Health

In collaboration, both the Ministry of Health (MOH) and Palau Community College (PCC) has formed a program aimed to instruct individuals interested in public health. The region of Micronesia is experiencing a shortage in its medical labor force. Hospitals and other medical facilities are lacking in nursing staff as well as doctors. Also, registered medical professionals are in need of re-training as the years have provided new studies and teachings in relation to the field. Micronesia also lacks medical professionals who are credentialed through an institution of higher learning. As a part of the solution, PCC has added the Community and Public Health (CPH) Program into its list of proposed offerings. The CPH program will blend in with the Nursing Program which is already offered at the college. Following a similar academic criteria, CPH will teach individual interested in public health about medical problems present in the Pacific region (e.g., alcohol/substance abuse). A problem-based learning tutorship will allow participants to analyze and identify issues within their societies. Such community collaboration will provide thorough understanding of the region's medical issues, thus developing a better-informed medical labor force. In addition, students under the CPH program will be trained and mentored by experienced MOH instructors. Students who earn degrees in this program may pursue a medical education in institute of higher learning around the Pacific such as the College of Medicine, Nursing and Health Sciences at Fiji National University.



CPH meeting with stakeholders and students at PCC Assembly Hall



Dr. Cuboni and student assistant at Career & Job Fair

On Thursday, April 11, 2013 PCC Community Public Health program participated in the first ever Career & Job Fair. The fair was held in the PCC Cafeteria from 8:00 a.m. to 3:00 p.m. and featured panel discussions, career pathways and employer exhibits as well as a recruitment booth for PCC. The purpose of the event was to allow senior high school students to connect with potential employers and to get exposure to the "real world of work." It also provided an opportunity for employers to promote their businesses and to recruit this year's graduating students from high schools. The event was a collaborative effort of Belau Employers & Educators Alliance (BEEA), Palau Community College, and Palau High School Career & Technical Education (CTE) program.

Education

This program is designed to provide students with knowledge, skills and proper work habits/attitudes necessary for classroom teaching. It also prepares students as classroom teachers or to pursue higher degrees in education or related fields.

Aside from regular class lectures and presentations, most Education Program dents do their research project outside of class on topics related to what they have learned. Others would do their internship at Palau public schools and Head Start Centers.



stu-

Instructor Iyekar presents at the 19th Education Convention

In July 2013, the Ministry of Education hosted the Palau Education Convention (PEC) for all teachers in public and private schools in Palau including Palau Community College. The 19th Education Convention was divided into different sessions in which participants were taught about different aspects of education. Each session was instructed by an experienced educator or counselor. Two convention sessions were conducted and presented by PCC Education Program instructors. Mr. Tennyson Cason and Ms. Pasquana Iyekar. Mr. Cason's presentation focused on classroom management and discipline where participants learned responsibilities of being a teacher, preparing teaching materials and general operation of the school. Ms. Iyekar's presentation "Lesson Planning & Material Development" provided knowledge and skills in writing lesson plans with behaviorally stated terminal and short term objectives to meet the needs of regular, gifted and disabled students. Teaching strategies and evaluation procedures were also discussed and emphasized. Participants learned to develop activity worksheets and adapt learning materials to match lesson plans.

The annual education convention hosted by Palau's Ministry of Education (MOE) aims to improve the quality of education on the island. Other workshops/sessions focused on skills that also assist teachers in their teaching, such as library operations and classroom communication.



PCC Instructor Cason's presents at PEC conference

Environmental/Marine Science

During this reporting period, the Environmental/Marine Science Program and Science Department had two full-time instructors with the enrollment of ten (10) students.

On May 16, 2013 Itungelbai Bells and Persis Omelau, students in the Environmental/Marine Science Programs, were featured in a symposium. Each had spent a semester under different agencies that dealt with the environmental issues of Palau. Mr. Bells had interned at Koror State Government where he worked with Ilebrang Olkeriil on the Rare Campaign. He assisted with surveys that aimed to collect information about the level of awareness boaters and fishers have about such conservation sites as Ngederrak.

Ms. Omelau spent the semester working at Palau International Coral Reef Center (PICRC) where she studied the effects of Typhoon Bopha on the corals. She researched how the storm had affected the corals and biodiversity of the reefs in Uchelbeluu and Ngerchong. Both presentations showcased how Palau's environment has changed due to natural and human influences. Members of the Islands of Opportunity Alliance (IOA) - Louis Stokes Alliances for Minority Participation (LSAMP) Program were present to witness the results of these students' field studies. The LSAMP program assists universities and colleges in diversifying the STEM workforce through their efforts at significantly increasing the numbers of students successfully completing high quality degree programs in science, technology, engineering and mathematics (STEM) disciplines. Particular emphasis is placed on transforming STEM education through innovative recruitment and retention strategies and experiences in support of groups historically under-represented in STEM discipline: African Americans, Alaskan Natives, American Indians, Hispanic Americans, Native Hawaiians, and Native Pacific Islanders.



EMS students in post symposium photo op.

In June 2013, an EMS student, Kyah Remeliik attended and gave presentation at the 7th Islands of Opportunity Alliance-Louis Stokes Alliance for Minority Participation (IOA-LSAMP) student conference in Honolulu, Hawaii. Kyah gave a brief presentation on "How do Coral Bleaching Affect Palau and its Nation?" The presentation touched on evidences of coral bleaching in Palau, the causes and effects and some solution that are done locally to help decrease its abundance.

We Guarantee Quality and Excellence

PCC LA student, Talitha Alexander had the opportunity to participate in The Organization for Tropical Studies, Native American and Pacific Islander Research Experience (OTS-NAPIRE) undergraduate biology program to gain research experience at the Biological Station in Las Cruces, Costa Rica. Talitha is currently attending UH-Manoa, studying zoology.

In April 2013, EMS Associate Professor Vernice Yuzi, attended the NAPIRE (Native American and Pacific Islander Research Experience Program) Mentor workshop in Costa Rica. She was invited to an all expense-paid orientation and communication workshop at the biological stations of the OTS (Organization for Tropical Studies) with a focus in strengthening student integration of their experience into their career goals.

In Summer 2013, EMS instructors were able to collect and analyze data from the registrar for Agricultural Science, Environmental/Marine Science, and Information Technology Programs. Compiled data and input into the NSF WebAmp database online for IOA-LSAMP annual grant report. IOA-LSAMP grant is in its 3rd year. The collected and analyzed data from registrar for the Environmental/Marine Science program and compiled into a report for the NSF-ATE annual grant report. The NSF-ATE grant has been extended to August 31, 2014. EMS faculty coordinated and mentored LSAMP student presentation rehearsals for student representatives of ES and IT programs who presented in the annual LSAMP student conference that was held in Honolulu on July 14- July 18,2013.



Science 239 students at Kilarirs doing field research

Liberal Arts



The second annual School of Arts and Sciences Forum was held on Friday, February 08, 2013 at the PCC Assembly Hall. The forum featured presentations by students from Dr. Isebong Asang's sociology and psychology classes. The students who presented were Marcia Barmelio, Vanessa Espangel, Shari Megreos, Daphne Nestor, and Elsei Tellei.

Ms. Barmelio talked about religion and spirituality. Acts of worship can be dangerous because of how they affect others in the community. They can be reflected in the form of wars, prejudice, or discrimination. Spirituality and Religion can impact people's attitudes and behavior and in some situations, they are considered socially dangerous.

Ms. Espangel focused on the educational aspect of Palauan heritage. Education for Palauans began when the role of teaching fell upon the clan, and the community as a whole. Until the arrival of German missionaries, a formal form of education was formulated to lure Palauans into Christian conversion. The Japanese Era also brought change in education with the establishment of schools that taught arts, geography, history, and established carpentry schools that usually provided job opportunities for Palauans. After WWII, Palau adopted the U.S style of education. For the first time in about a hundred years, Palauans had a role in administering education for its children. Today, the Palauan government works to instill cultural programs and education through a formal education system. This shows Palauan's efforts to preserve cultural identity as well as those values that characterize who Palauans are as Palauans, despite the transitions of educational administrations over the years.

Ms. Megreos explored the adoption of a child for love or for the desire for gaining money and/or land. She explained the types of adoption practiced in Palau, and presented various reasons why people adopt children. Such reasons include infertility, the desire to balance gender ratio among children, desires for single parenting, gay couples desiring to have children, and the desire and need to have someone be a caretaker for an elderly person in future time. Through interviews, she concluded that adoption was like politics, involving both commitment and the desire to keep money and land within the family. Adoption is a very sensitive issue for adopted children. It affects them psychologically and emotionally, where many may ask questions as to why they were adopted. It is necessary to explore other people's perspectives and feelings on this issue in order to be able to redefine the word *Adoption*.

Ms. Nestor enlightened the audience about the Sonsorolese's culture in raising a daughter into a woman. The Sonsorolese valued their daughters and made elaborate ceremonies to celebrate their beauty and transition into womanhood. The parents bore this transition with pride. Such ceremonies included ear piercing, menarche, and arranged marriages. These were politics of gender because it was a matter of life and death. Penalties for not following these customs came with a price of public shame or even exile for the daughters. From various interviews, some of the older generation were saddened to see the change in celebrating these ceremonial practices for the Sonsorolese people. Others were content to accept that time has changed as well as how things are being done. The younger generations were glad that these traditions have changed. Multiculturalism, as well as external influences, have certainly impacted values and attitudes of some Sonsorolese towards their customs.

Elsei's presentation is based on her research about the violent tendencies among Palauan men. Violence is not only the result of peer pressure and defying social and cultural norms. It is also a result from parenting styles. It is a result of caving in to build up negative emotions that are not expressed in healthy or productive ways. Such emotions may create stress.

There are four types of parenting styles: *Authoritarian* (disciplinary and shows no remorse for child's needs or wants), *Authoritative* (disciplinary but gives good reason and cares about the child's needs and wants), *Permissive* (shows little or no care for the child), and those who ignore their children.

Parenting styles can affect a child's violent tendencies when a parent has no regards for the child's psychological wants and needs and exerts too much pressure on the child by being judgmental or over expectant through discipline.

There are two ways to prevent violent behaviors: Prevention, which happens at a very early age; and intervention, which is ideal for young children and teens. These can be established by adopting the authoritative parenting style, as well as introducing children to productive ways of expressing feelings through art therapy (dancing, singing, and wood carving). In a way, Palauan's plays a role in violent tendencies because traditionally Palauans have raised their children to be obedient and to conform to social expectations. Children can be helped by being more nurturing to their needs and desires as well as teaching them to express emotions more productively.

Library & Information Services

The program has one full-time instructor, Ms. Laura Lay. She replaced Mr. David Thompson who accepted the position of Director at Tan Siu Lin PCC Library. The program currently enrolls sixteen students. The LS program is designed to provide students with an effective knowledge and understanding of library operations as well as providing a diverse range of essential skills for functioning efficiently within the workplace. The program was previously offered using a hybrid model of education combining the use of an online course site and traditional classroom activities, such as check-ins for hands-on exercises, special topic seminars and student progress reports as well as encouraging students to have frequent face-to-face meetings with their instructor whenever confronted with questions or obstacles. Starting in the Fall 2013 semester, the program reverted to a traditional classroom model to allow the students and instructor to have more face-to-face class time.

In spring 2013, the LS program moved from Room 32 to the Western Curriculum Coordination Center (WCCC), nearer the library. As well as offering space for an instructor's office and room for class instruction, the WCCC houses a collection of mostly educational materials, resources on teaching methods and vocational training curriculums. Donated and moved to Palau Community College when the original WCCC closed at the University of Hawaii, this collection is not currently a part of the PCC Library online catalog and will serve as a kind of laboratory where the LS students can gain practical training in cataloging, preservation, and library reference. In addition to using the WCCC collection, students visit several local libraries throughout the semester to see the basic aspects of libraries and information centers in practice and experience different working environments. Students are required to write a library tour essay comparing and contrasting the different information centers visited throughout the semester which helps students employ critical thinking skills to solve problems or address specific issues in the library based on knowledge of library organization and professional library ethics and standards of librarianship.

Students in the LS program completed many class projects and presentations to demonstrate their knowledge and abilities in librarianship. In LS105, students are required to create a poster on a specific library resource or information literacy skill and give a presentation. LS110 students participate in a reference desk practicum where they use online resources to connect patrons with appropriate academic and non-academic information. LS120 students complete a project where they create an online website or presence for a Palauan library and present it to the class. In LS 215, students create a library policy manual covering daily library procedures and situations that is easily accessible to staff and patrons. LS 220 students identify local library fundraising needs and connect these to local fundraising sources. Students in this class also develop a professional grant proposal, which includes the creation of a plan, timeline, narrative, guidelines for measuring progress, and evaluation techniques. Each of the projects and presentations represents a library tasks that the students may encounter in their future employment.

In the past year, all LS courses have been assessed with improvements made accordingly. Assessments show that for larger projects and essays due, it is necessary to break them down into smaller, more manageable parts. This helps facilitate the understanding of the overall project and allowed students time for graduated understanding and improvement. Course assessments also revealed the need for more hands-on components in class and in final exams. The hands-on components demonstrate understanding of concepts without having to articulate the concepts into words which benefits students who are tactile learners.

Nursing

For this reporting period, the Nursing Program has one full-time instructor and one adjunct instructor with an enrollment of twenty-eight students. Aside from traditional course lectures and in class activities, guest speakers are invited to present as guest lecturers on specific health topics to support student learning.

Nursing students were required to participate in class projects, presentations and even guest lectures. During this reporting period, students participated in clinical practicum at Ministry of Health outpatient clinics and dispensaries where they were able to apply nursing skills and assisted Ulkerreuil A Klengar, a community Health Support Group in their cause against NCD (Non Communicable Disease) that was held at the Palau National Track & Field by measuring blood pressure and determining BMI for participants.

NU 202 students participated in a five days training/workshop for breastfeeding that was held at Belau National Hospital where they learned about the benefits of breastfeeding leading to healthy babies.

Nursing students in NU 201 class participated in community outreach by visiting hamlets in Koror and assessed blood pressure and blood sugar levels of the community members. Students were also assisted in an NCD Research Study under the guidance of Techong Singeo and his staff by distributing flyers and survey questionnaires. During PCC Charter Day, students also volunteered and participated by assessing charter day participants blood pressure and blood sugar levels.

Nursing students are engaged in clinical rotation with Civic Action Team (CAT) Medical Officer, Captain Brian Gomez PA-C at CAT Palau's Medical Clinic located at Camp Katuu, Airai State. Capt. Gomez also gave PowerPoint Nursing presentation to enhance student learning experiences. During clinical rotation, the students learn through observation and participated in hands-on skills learned in the classroom.



Nursing students with CPT Brian Gomez PA-C, CAT Medical Officer



Instructor Rabuka and students participated in special health presentation

STEM Disciplines Program

The STEM Disciplines (SD) Program is designed for individuals interested in professional careers in science, technology, engineering, or mathematics. The program provides basic knowledge and skills needed for the pursuit of a higher education in these fields. The STEM Disciplines Program currently has three students enrolled. The program requires student to take core subjects in sciences, mathematics, computer sciences, english, and social science to earn an Associate of Arts degree.



M.Andreas presents at STEP-UP Summer Program prior to his enrollment at PCC STEM Program

DEPARTMENTS

The following departments within the Academic Affairs Division offer general education courses for Liberal Arts majors as well as courses that are required for the rest of the programs.

- | | |
|-------------------------------------|----------------------------------|
| 1. English/Communication Department | 5. Health and Physical Education |
| 2. Math Department | 6. Sciences Department |
| 3. Music & Fine Arts Department | 7. Computer Science Department |
| 4. Other Languages | 8. Social Sciences Department |

English Department

For this reporting period, there two full-time instructors with a total enrollment of 885 for Fall 2012, Spring 2013, and Summer 2013.

As part of extension activities for EN 202 - Children's Literature course, student were sent to different schools to show-case certain art approaches to reading. Schools participated were Koror Elemenatary School, Airai Elementary School, and PCC Day Care Center.

On Thursday, July 25, 2013 and Friday July 26, 2013, the Ministry of Education conducted a 19th Annual Education Convention for teachers in Palau. It was held on the campus of Palau High School (PHS). The convention was divided into different sessions in which participants were taught about different aspects of education. Each session was instructed by an experienced educator or counselor. English instructors, Ms. Midori Mersai and Ms. Derbei Meyar gave a presentation on Teaching English for Speakers of Other Language (TESOL). The purpose of the presentation was to introduce a new course, EN 157 at PCC that is geared toward teachers in Language Arts on how to convey language arts skills to students using a learning-centered approach rather than a teacher-centered approach. This approach helps students to understand language arts concepts better and increase the retention of skills.



PCC English Instructor presenting at the 19th Annual Education Convention

Mathematics

During this reporting period, mathematics had two full-time instructor, Mr. Epimachus Moses and Ms. Margeline V. Buban with a total of 88 students enrollment. Seven students taking MA 95-Basic Algebra passed the Challenge Test. A student from MA 100-Technical Mathematics built a large scale model of the Vernier caliper. This project served as a learning tool to enhance the student skill in learning to calibrate and read the measurement tool



MA students summer class presentations

The Intermediate Algebra (MA-105) and Survey of Mathematics (MA-110) classes had presentations during mid-term week. Each presentation covered a topic that had been studied during the first half of the summer session. This gave the students a chance to teach and measure how much information was understood during the first half of the summer session. Interim Dean of Academic Affairs, Robert Ramarui, was invited to witness the presentations.

Adjunct Instructor Sampson Sarfo commented that mathematics is not just a concept that a student should learn as a graduation requirement; instead, students should learn to apply mathematics in their lives. Mathematics can be applied in finance, engineering, cooking, tourism, and sports. Students from both classes promoted this idea by using historical and present-day examples to make convincing arguments that mathematics plays a crucial role in our society.

Two students used the mathematical concept of "Distance of Two Points" to determine the distance from a house in Airai to a workplace in Koror. The mathematical concept gave the students the skills to estimate how far and how long it will take a person living in Airai to travel to Koror. The presentations allowed the students to find the practical usage of the mathematical concepts learned in the classroom.

We Guarantee Quality and Excellence

Music Department

For this reporting period five music courses were offered. A total of sixty one students were enrolled. As evidenced in the assessments submitted, students exceeded the expected learning outcomes for all courses.

The music department along with the PCC Music Club were very active this year in not only classroom activities but also with college and community events.

- PCC Music Club and students performed their annual Christmas concert at Bethlehem Park, hosted and performed 2012 DeWill to Live concert, and organized and performed at the "Touch of Heaven" concert at Meyuns airport.
- Guest Lecturer Professor Junko Konishi spoke to students in MU 102 and began a transcription project putting Palauan songs into formal notation.
- Music students from Youth With A Mission (YWAM) in Kona, Hawaii visited the music classes and spent three days practicing and sharing their musical experiences with PCC students.
- PCC Music Club performed the national anthem at the college's commencement exercises.
- MU 149 students hosted the four day summer music camp that involved forty five students from local elementary schools.
- The Music Department assisted the U.S. Embassy by performing the U.S. and Palau national anthem at their July 4th celebration.
- The PCC Music Club performed at the college's 9-11 Memorial Service in September 2013.



Ambassador Maggie Tien with music students

Other Languages

The Japanese Language had two instructors: one full-time and one adjunct. A total of 37 students enrolled in Japanese language courses.

In Fall 2012, Oral Presentations were conducted about family with the Japanese language and illustrations. Using skills they learned in class, students made up sentences about their family. This related to course learning outcomes (CLO1) Japanese pronunciation/ (CLO3) understanding and using proper vocabulary and sentence structure/ (CLO4) Speak with appropriate Japanese behavior. Course assessment for Fall 2012, Spring 2013, and Fall 2013 were completed showing that students are good at Japanese pronunciation, but not good at expressions or dialogue.

In Spring 2013, the Japanese instructor and the Chinese instructor took turns to play in roles of a student so that they could observe classroom/ lesson/activity and exchange ideas/opinions to improve courses and teaching strategies. At the end, the instructors recommended that the number of students in one classroom/section should be 16 for a conversational Japanese class. Too many students will make it hard to observe and manage with only one instructor in class.

We Guarantee Quality and Excellence

The scholarship funded by the Government of Japan held its placement testing for undergraduates on Friday, June 21, 2013. Test-takers included recent high school graduates and college students still completing their undergraduate programs. The scholarship will provide full-funding, including tuition and personal fees, for students who partake in a total of five years in most fields of study or seven years in the fields of medicine, dentistry, or veterinary medicine. The Government of Japan offers a total of four (4) scholarships to Palauan citizens that include postgraduate and teacher training programs. These scholarships have been offered to Palauans since 1982 with a total of 53 Palauans benefitting from the opportunities.



Students taking test at PCC Assembly Hall

The Chinese language had one full-time instructor and two students enrolled.

In Chinese language class, students are encouraged to perform dialogue, participate in role-play, and speak in Chinese. As a result, students are able to greet people, answer and respond appropriately, and introduce themselves properly. Although the class mainly focuses on listening and speaking skills, students are taught how to write their names in Chinese characters at the beginning of the course.

Cultural activities in classroom such as practicing calligraphy or watching Chinese movies not only strengthen students' writing and listening skills but also increase students' understanding of Chinese culture. In Fall 2013, students visited local stores owned by Taiwanese businessman. The purpose was to learn names of items sold and learn how to purchase and negotiate prizes. This expose students to a real life interactive dialogue.



BMS students tour language classroom

Health and Physical Education

The department of Health and Physical Education is made up of two discipline groups: 1) Health and 2) Physical Education. These discipline groups are designed to support and meet the general education requirements of all programs.

For this reporting period the program had two guest speakers:

- Allyne Andrew is an HIV/STI Health Educator who gave a presentation on common sexually transmitted infections in Palau and their signs/symptoms and available treatments/testing on the island. She also provided HIV/AIDS statistics from Palau.
- Gustav Salii is also an HIV/STI Health Educator who gave a presentation on sexually transmitted diseases and the overview of statistics in Palau.

Professional Development Trainings:

- NCD Collaborative Pilot Training Project for FSM and RMI Summit sponsored by Pacific Chronic Disease Council
- Breastfeeding Training at MOH
- Tobacco Control Workshop
- HIV/STI workshop on "How You Talk to Your Partner/Others About HIV & AIDS"

Science Department

The Science Department courses are taught by two full-time instructors who are also in charge of the Environmental/Marine Science program and Nursing program. As a result, students activities and laboratory work are concurrent and cross trained.

Computer Science

The Computer Science Department had one adjunct instructor who oversee the following courses:

The CS 100 - Computer Literacy covers basic information processing and uses of computer including basic application software and the Internet. Topics include basic computer concepts, navigating in a Windows Operating System, and computer software such as word processing, spreadsheet, and internet/email applications. Thus, students can properly format text, graphics, columns by using appropriate fonts, margins, graphs, clip-arts, and animations.

CS 213 - Desktop Publishing taught students basic concepts in combining text, drawings, and images to create letters, brochures, greeting cards, and other publications. Software to be used for the course are Microsoft Publisher and Adobe Page-Maker. As a results, students are able to make use of pictures by editing and collate photos, inserting and editing text, and create publications for final projects.

Social Sciences/Humanities Department

In November 9th 2012, SS 189 & SS 149 students had a field trip to Ngerchelung to visit Badrulechau, and Todai. SS 149 & SS 179 students attended the 2nd day of 2013 Mechesil Belau Conference. The students had an opportunity to witness the priceless arts and crafts that were displayed at the conference. This gave the student an appreciation and understanding of the relation of arts and craft and how this helped shape the society of women in Palau. The field trips correspond with course learning outcomes 2 and 3. SS 179 (Social Anthropology) had a fieldtrip to the Bureau of Arts & Culture and Belau National Museum. The field trips correspond with course learning outcome 2 and 3, which demonstrate understanding and the ability to articulate how culture, society, and diversity shape the role of the individual within society and human relations across cultures relative to introductory Social Anthropology and course learning outcome 3 that also demonstrate knowledge and the ability to analyze social changes and social problems and develop social policies.

SS 119 and SS 129 classes held a student forum in the beginning of this year. Students attending SS and Humanities classes were required to attend the student forum. By requiring students to attend such activity, this will encourage students to participate in the upcoming student forum. This also allowed students to witness the various forms of presentations and research methodology.

SS 179 (Social Anthropology) class had a guest speaker from Koji University, Professor Shingo Ikata. Cultural Anthropology Professor Ikata did a presentation on Buddhism.

SS 149 (Intro to Political Science) had a guest speaker, Mrs. Elicita Morei, who gave a talk about her experience during the compact review in the early 80's. This was a chance for students to realize the reality of what Palau experienced to become an independent nation. The same course also had a special guest speaker Ms. Vameline Singeo, an attorney for Pension and Public Land Authority, who gave a presentation about creating the laws. Also gave a pep talk to encourage students to pursue a higher education after PCC.



SS students at Ollei Bai



Students visiting Todai Scenic Point



Students looking at cultural artifacts display at Ngarachamayong Cultural Center

Program Highlights

Business Accounting/Business Administration

The program has two full-time and 3 adjunct instructors with a student enrollment of 177 students.

- BU 158 students in "Principles of Microeconomics" were given a project to collect data from Republic of Palau sectors, especially for individual industries on inflation, Gross Domestic Products, Consumer Price Index, National Deficit, and Trade Deficit. Such project is part of the student portfolio in which information is synthesized and provides alternative solutions.
- BA 159 students in "Principles of Macroeconomics" did a similar project as BU 158 but include aggregate data from Government Accounting sector at Ministry of Finance. Moreover, students collect data and information from Small Business Development Center for creation of business plans. This project calls for experiential learning which is part of the class.
- On March 14, 2013, Business Accounting and Business Administration students were able to attend the Asia Pacific Association of Fiduciary Studies (APAFS) Student Investment Conference that was held for the second year for high school and PCC students. The keynote speaker, Jason Miyashita, Instructor/Accredited Investment Fiduciary Analyst and Senior Investment Management Consultant at Morgan Stanley, introduced the students to the field of finance and investment. His lectures included Investment 101 and How to Read a Stock Table. The topics covered in this conference were in line with what students are learning in BA 110, BA 130, BA 131, BA 212, and BA 219. Sixty-eight students from both the BA and BU programs participated in this conference.
- BA and BU program instructors and students participated in the Career and Technical Educational Awareness Week.



Business Associate Professor Kintol presenting at CTE awareness week.



Emmaus High School students attending BU and OA program presentations

Office Administration Holds Youth Festival

During this reporting period, Office Administration has one full-time instructor with a total of 116 students enrolled in the program.

In Spring 2013, OA-221 class held an youth festival called "Kotel A Deurreng" on May 04, 2013 at the Assembly Hall of Palau Community College. Promoting tobacco-free lifestyles, the "Kotel A Deurreng" campaign was supported by the groups Ulkerreuil A Klengar (UAK) and the Coalition for a Tobacco Free Palau (CTFP). Faculty and staff members were also active in the organization of this event. The class prepared Power Point presentations that shared information about the dangers of tobacco use and the benefits of quitting. Speakers shared their personal stories about quitting tobacco use. Guest speakers included members of Coalition for Tobacco Free Palau (CTFP) and Ulkerreuil A Klengar (UAK) as well as PCC Associate Professor, Danka Ledgerwood also promoted the event and provided much needed prizes and gifts for participants. There was entertainment comprise of musical and dance performances. The dance groups included Aleko Te' Dancers, PCC Yapese Dancers, Lauren's Dance Crew, Shyla's Dance Crew, and Blouch Dancers. Over 200 people signed the Go-4-24-Hours, a pledge to stay tobacco free for at least a day, taking the first step toward healthier and happier lifestyles.



OA students at Kotel A Deurreng Event

We Guarantee Quality and Excellence

Information Technology

The Information Technology has one full-time instructor with a total of fifteen students in the program. During this reporting period, two students graduated and one transferred to the University of Guam and another one moved to Guam.

In Fall 2012, students in IT 215 redesigned websites for PALARIS, Palau Beach Bungalows, local Palauan Artist and Emmaus High School.

In Spring 2013, students enrolled in IT 222 Instructor Directed Practicum course applied their skills by troubleshooting and fixing various computers on PCC campus for faculty offices, students, and the Library. Thus, designed and created an Access database utilizing Visual Basic for applications to keep track of the PCC Dormitory supply inventory and incidental report at Student Life. Students also took part in the upgrading of the PCC Online server and Moodle installation.

In Summer 2013, IT students worked with the IT instructor to create Android Apps using Adobe Flash Action Script. The experiment was successful and was presented at the IOA-LSAMP Annual Student Conference in Honolulu, Hawaii.

IT students also participated in a field trip to Palau National Communication Corporation. They were able to tour the facilities and observe equipment that is used to broadcast cable, phone, and internet services. At the end of the tour, they were able to meet with PNCC representatives responsible for monitoring and overseeing various technology related activities within the corporation.

As part of their course learning outcome, students in IT 220 were able to install and configure the iTALC program at the Palau National Library. The program allows library personnel to easily monitor computer usage within library.



Information Technology & Computer Science faculty and students during CTE Awareness Week

Tourism and Hospitality

Mission

To lead students closer to his/her academic and occupational objective; to promote student learning and exploration in tourism and hospitality; and to support the College's mission and vision.

Strategies

To find ways to improve student learning; to integrate concepts into practical applications to enhance learning; and to utilize common and/or modern technology in the learning environment.

To collaborate in the enhancement and strengthening of tourism and hospitality training programs in Palau by upgrading and modifying the curriculum of Palau High School (PHS) and Palau Community College to reflect Palauan culture and meet the international tourism industry standards.

Objectives

- Increase number of skilled and trained Palauans and Micronesians to support their local industries,
- Help Palau to remain independent and become more self sufficient,
- Play an important role in the human resources succession planning and capacity building,
- Strengthen partnership with industry and mandate vocational training.

Students Learning Beyond the Classroom

In all the events, activities and functions which were handled by PTHSE, they were made possible because of the team efforts from the Tourism and Hospitality students and faculty members. In various functions, activities and events such as workshops, meetings, conferences, luncheons and dinner receptions, students were involved in setting up the restaurant and housekeeping classrooms.



Students in Food & Beverage course practicum

Tourism and Hospitality

The Palau Community College (PCC) Tourism & Hospitality School of Excellence (PTHSE) began its two-week culinary arts class on August 19, 2013. In collaboration with the International Youth Ambassadors Interactive Program (IYAP), the PTHSE hosted a course conducted by culinary arts students and a chef from ROC-Taiwan. PTHSE students and interested individuals signed up for this culinary arts course. During the two-week class, students and local participants learned the techniques of the Taiwanese chef and students. This included proper dining etiquette, menu production, and the art of carving fruits and vegetables. The students and chef from Taiwan also had the opportunity to experience the culinary practices of Palau. They learned about creating dishes with local products such as taro, fish, and breadfruit.

Participants of the course from Taiwan and Palau also visited areas of food production on the island including the Republic of China-Taiwan funded sites such as Palau National Aquaculture Center (hatchery) and the Taiwan Technical Mission farm. IYAP aims to promote an experience of cultures and an understanding of the many different practices in the world. This year's theme focused on the culinary arts and traditions in food preparation.



President Tellei at PTHSE with students and participants during the final dining etiquette and food production display

Program Highlights

Air Conditioning & Refrigeration Technology

The Air Conditioning and Refrigeration Program is designed to provide students with technical knowledge, skills and proper work habits/attitudes necessary for employment in the field of Air Conditioning and Refrigeration. The program prepares students to work and advance in their careers as air conditioning and refrigeration technicians, trouble-shooters, parts counter salespersons or operators of their own air conditioning and refrigeration service and repair shops.

The program has one full-time and one assistant instructor. ACR assistant instructor is officially a member of the board of the newly created Refrigeration & Air Condition Industry & Technician Association of Palau, a non profit organization to serve as a National Ozone Office in the Republic of Palau.



Belau Modekngel School tour ACR Shop



ACR Instructor brief students on air condition layout

Automotive Mechanics Technology

The program has one full-time and one assistant instructor. The program assessments are currently ongoing.

The 2nd Annual Automotive Exposure Program was held from July 15 to August 2, 2013. The purpose of this program is to expose participants to the automotive trade and to instill in them a sense of direction and allow those who are interested to consider pursuing the field. There were twelve (12) participants who were actively exposed to automotive custom building and modifications program.

The Auto Club held its first organization meeting on February 5 and 6, 2013. Automotive Technology students and their instructors and advisors Mr. Ala-Lofty Ongalibang and Nobby Enano met to discuss and finalize the by-laws of the club and to do a membership drive. Fifteen (15) AM students showed interest and signed up to become members and to work on the by-laws to be ratified by President Tellei.



Auto Club members meeting

Construction Technology

The Construction Technology has one(1) full-time instructor and one(1) adjunct instructor. There are a total of thirty-eight (38) students enrolled in the program.

In Fall 2012, CT students assisted in repairing Felix Okabe's house in Ngkeklau. Okabe in turn donated \$300.00 to PCC endowment fund. At the same time, students assisted Airai Catholic Church by replacing indoor ceiling. The aftermath of Typhoon Bopha, students donated much needed furniture to Bethania High School.

In Spring 2013, students participated in the Career and Technical Educational Awareness Week by displaying their projects of cabinets, tables, dressers, and energy solar water heater and water recycling projects. Aside from the above, students repaired their own classroom and tool area in the shop.

Students in AD 120 Architectural Drafting and Design class went around campus and sketched a perspective view of the buildings. This is for the student to master the art of freehand sketching in three dimensional pictorial drawings and create orthographic projections of a simple structure. Students in AD 210 created a complete set of prints. This project is to let students be able to create a set of prints of their design and draft a set of plans, be able to use the commands learned from class into creating a set of prints using Autocad and complete a set of print on .dwg file and print out.

Students went on a field trip to CIP Project as part of their class. Guest Speaker: Ben Asuncion, the Project Manager, introduced the project and its purpose. The project was done with Neco Construction. He explained the importance of being a Project Manager, from the job description to creating projects, scheduling, estimations and most especially site safety procedures. With this Site Visit the students understood the difference between a government project and private company projects. This is an eye opener for students to pursue their own careers in the field.

CT 212 Construction Management students visited the Ngermid project constructed by Palau National Quarry Inc. with a tour guide, Edilbert Abunaga. Abunaga introduced the process of the project from phase 1. He clearly explained the purpose of each permit and what is needed to be accomplished before building the project.

Meanwhile students went around the site and were encourage to ask questions. The project was sitting on top of a hill and had a retaining wall, Abunaga clearly explained the computations of the footing which would still be safe to have the building on the set area. Students were amazed on how Abunaga showed computations and explained the importance of being a structural engineer. He clearly mentioned that site safety meetings are always a need in a construction site to remind workers to be safe.



CT students applying construction concepts on site

Electrical Technology

The Electrical Technology Program is designed to provide students with technical knowledge, skills and proper work habits/ attitude necessary for employment in this field. The program prepares students to work and advance in their careers as electricians, electrical maintenance personnel or power distribution personnel.

During this reporting period, the ET instructor and students were able to assist a community member in repairing a gas range and performed rewiring in Ngerubesang Community Center. Students were also assisting in rewiring of Alingano Maisu prior to its scheduled voyage.

In laboratory, students are performing real time activities and small projects that are aligned to the duties and responsibilities of a maintenance electrician, industrial electrician, residential electrician and motor rewinding. As such, students gain practical experience by performing electrical wiring installation in residential and commercial establishments, installing a control system for fresh water and sewage system, and motor rewinding.

In July 2013, an ET instructor attended a training and workshop regarding Solar PV Design and installations of a Grid Connected System. This training gave him the knowledge and skills for selecting appropriate materials, correct procedures and installation, occupational health safety standards, and designing.

In Spring 2012 ET course assessments were completed and submitted to Accreditation Liaison Office. The program continues to work on the Fall 2013 course assessments.

A new proposed course for "Grid Connected PV System Design and Installation" was submitted to CPC for review and approval. The offering of this course as part of the ET program will help the community to utilize and promote the use of renewable energy and trained new personnel for designing and installation of the system.

In March 2013, ET program instructor and students prepared and showcased the program tools, equipment, and projects to interested high school and elementary students during PCC's annual Career and Technical Educational Awareness Week.



Palau High School students tour Electrical Shop

General Electronics Technology

The General Electronics Technology Program is designed to provide students with technical knowledge, skills and proper work habits/attitude necessary for employment in the field of electronics. The program prepares students to work and advance in their careers as electronic technicians, assemblers, testers, parts counter salespersons, or operators of their own electronic parts distributor establishments and service and repair shops.

During this reporting period, assessment for fall 2012 and spring 2013 program courses were completed and 100% of the students who took the fall courses achieved the proficiency level while 83% of the students who took spring courses achieved the same proficiency level.

Surangel and Sons Company donated several defective electrical and electronic appliances for the GE program. Students were able to repair 50% of the equipment.

From June 10-26, 2013, the GE instructor attended a training and workshop for Solar PV Design and installations of Grid Connected System. This training gave him the knowledge and skills in selecting appropriate materials, correct procedures and installation, occupational health safety standards, and designing.

In September 2013, GE and ET instructors installed the Grid type Solar Photo Voltaic Generator on the Electrical Technology and Electronic Technology building. This is able to generate 1.7 kw/hr. The PV system is intended for the incoming offering of the PV installation course at PCC.

The GE instructors and students also participated in Career and Technical Educational Awareness Week by providing program information, showcase electronic components and tools.



Students tour General Electronic Technology Shop

Small Engine and Outboard Marine Technology

The SE Program has had an extremely busy year with an influx of many new students and with the addition of an Australian Volunteer Instructor. The three staff, Joshua Bedangal (instructor) Daley Ueki (Assistant Instructor) and Bruce Campbell (Volunteer Assistant Instructor) carried out extensive teaching activities and students benefitted from their approach. The program has a total of thirty-two students with twenty-eight (28) in their first year and four (4) in their second year.

Many of the students took part in the SE 101 course which required them to leave the campus each Saturday and take to the sea in the College boat where they learned all aspects of seamanship. All students took turns at driving the boat and actively prepared the boat for each departure. In addition, many of the students were taken on excursions to local businesses where they were able to observe modern repair practices such as computer diagnosis and servicing. Many of the students were fortunate to take part in an excursion to the Marine Law facilities where they were given a tour of the patrol boat, "H.I. Remeliik." Students also visited the Australian Naval Compound where they were given a practical demonstration on how to service and maintain a new CAT generator. All of these activities directly contributed to the Course Learning Outcomes of the nine subjects covered by the SE Program.

The students' time at College was fully taken up with practical and academic classes. A lot of preparation went into a presentation used for visiting high schools students who were at the College to see what courses they could take in the future. This included setting up a display showing the uses of computers for fault finding in outboard engines and some students helped carry out the presentation. This was directly related to the CLOs which require skills in dealing with customers.

Throughout the year there were continual projects being undertaken by the students under the direction of the Instructor and Assistant Instructor. Many people brought their chainsaws or "green machines" in for repairs and the students become fully involved in the initial fault diagnosis and then the repair of the machines. The students also undertook maintenance and service of the College boats. This has included the re-building and upgrading of the boat trailers where the students learned about such things as maintenance of wheel bearings, welding, correct positioning of wheel springs and winches and preventative painting. The students also worked on several machines from the Maintenance Division. All of these projects fit in perfectly with the CLOs for several of the courses.

Assessments this year have been based on Signature Assignments for each subject. The Signature Assignments range from written reports and comprehensive exams to verbal reports, mechanical activities and boat driving. Each subject has between two and four Signature Assignments. The signature assignments are now part of the course outlines and the students are advised of their content and significance right from the beginning of each semester. The students' application and skills in the workshop are continually monitored by the instructors.

We Guarantee Quality and Excellence

Training this year has been in the form of assistance by the Volunteer Instructor from Australia. He has helped to upgrade much of the paperwork and improve the course outlines and syllabi. This has led to the SE Program being completely up-to-date with accreditation and "Tracdat" procedures. He has also been very actively involved in mentoring and teaching the assistant instructor. This included visits to the Automotive Department to observe lessons and regular afternoon meetings. The Volunteer took regular "Engine English" lessons in the spring term which were observed by the mentee. In the fall term, the Volunteer took responsibility for the SE 113 classes and these were also used as a training ground for the mentee.

The Small Engines and Outboard Marine Department courses could be seen as very relevant ones undertaken by students at this College from Palau and other islands which rely heavily on the sea for their food and livelihood. This is reflected in the very strong new student numbers this year. It is to be hoped that this trend continues.



SE student demonstration of Outboard Marine Engine

SUPPORTING VOCATIONAL COURSES

Welding (WE) and Auto Body (AB) Courses

The Welding and Auto Body courses has one full-time instructor, Mr Rogelio Santos. Welding is a required course for Automotive Mechanics (AM), Air Conditioning & Refrigeration (AC), and Small Engine Mechanics (SE) program and an AB course is required for AM program only. Students are mostly involved in laboratory work by learning the practical task of welding. Each student is assigned a task to complete by the end of the day. Such tasks involved in repairing of school vehicles for maintenance, dormitory and other college offices. Other welding tasks involved concrete mixers, table tops and racks. The students and instructor were also involved in Career and Technical Educational Awareness Week by demonstrating basic welding techniques and auto body metal bending equipment.



Students tour Welding/AB shop

CHILD CARE CENTER

The center came about as a joint effort between PCC, Palau Community Action Agency (PCAA) and the Ministry of Health-Child Care Unit. Its main purpose is to help single parents or low-income families to continue their education at PCC by bringing their children to the center. This reporting period, the center served 45 students.

Highlights



"Trick or Treat" at Registrar's Office



Day Care teachers in summer training

Field Trip

Each year, Day Care students take field trips to expose them to the real world by giving them the opportunity to get out of the classroom and introducing them to the different environments as part of their learning and growth. Their experience out-of-classroom trips included a tour of PCC Campus,, Ollei Port, Badrulchau Historical Site at Ngerchelong and the National Capitol at Ngerulmud.

Daily Learning Activities

Day Care students are exposed to various learning activities on a daily basis through lesson plans taught by their teachers on different topics, such as health, nutrition, physical education, short stories, interactive board games, arts, and science, including classroom clean ups.



A visit to Todai in Ngerchelong



A Tour at the Capitol in ;Melekeok

Career and Technical Education Awareness

Each year, the College welcomes students from elementary schools and high schools, and interested community members to tour the campus to see what programs are available at the College during the Career and Technical Educational Awareness Week. Guided tours include stops at the Library for the Library Science program, construction shop to see demonstrations from CT students, the auto shop for Automotive Mechanics Technology and the welding shop. Other program tours include the General Electronics shop, the Electrical Technology shop, and the Small Engine shop with a final visit to the Palau Tourism & Hospitality School of Excellence (PTHSE) for the Tourism & Hospitality Program. As part of program learning outcomes, students enrolled in each program demonstrate their skills by explaining what they learn and showcase products of their class activities as part of their signature assignments.



COMMITTEE ON PROGRAMS & CURRICULA (CPC)

The committee on programs and curricula (CPC) is one of the standing committees at the college. Its membership is comprised of representatives from divisions, sections and units that deal either directly or indirectly with matters concerning programs, curricula and academic regulations. The members are the Registrar who represents the Student Services Division, the Director of Adult High School/Talent Search, the Curriculum/Student Training Coordinator who is a chairperson, the Associated Students of Palau Community College representative, three faculty members representing the three schools, and the Associate Dean of Academic Affairs who is an ex-officio member.

The functions of CPC are as follows: (1) review, approve or disapprove, and/or make recommendations to the Vice President of Education & Training regarding approval/disapproval of new course/program; course/program modification; course/program deletion; program clustering; course substitution/waiver; changes in academic regulations and policies/formats/forms; courses that may be challenged; program/department's developed tests used as challenge tests, placement or for credit by examination; adoption of textbooks; (2) ensure appropriateness of any commercial test before adoption, (3) ensure course outlines' three-year validity, (4) ensure programs' assessment initiated after three years, (5) assist in the evaluation of incoming transfer credits, (6) review and approve/disapprove requests for course/program articulation, (7) ensure implementation of approved modifications, and (8) have on file copies of approved documents and articulation agreements with high schools/colleges or universities.

For this reporting period, CPC held 9 meetings to do the following:

- (1) Review and approve TESOL course proposal.
- (2) Review and approve internship rating sheet format.
- (3) Review and update the curriculum handbook.
- (4) Review and approve Program Review Instrument.
- (5) Review and approve one (1) program modification and two (2) course modification.
- (6) Review, approve and grant four (4) TOEFL waiver request.
- (7) Review and approve one (1) request to use work experience to fulfill internship requirements.
- (8) Review and approve twenty-eight (28) course outline validity for 3 years.
- (9) Review and approve two (2) course modification.

Chris Bachelor worked on a new course at the invitation of the College as a part of Palau Gov't and Australia partnership agreement funded by Australian government. The new TESOL course is for teachers to deliver quality teaching practices for English as a second language. This course will be incorporated into the existing AS Degree in Education program. It is a 14 module course focusing on strategies and methodologies on teaching and learning English in the classroom. The course will require full participation of students. In June 2013, the first trial of the course was conducted for public and private schools and the feedback indicated the need for this course at Palau Community College. As a result, CPC moved to approve the TESOL course proposal and further approved the number code to EN 157.

INTERNSHIP TRAINING

Internship is the last course required of all programs, except Liberal Arts, Nursing and Education. During their last semester, students work at assigned sites to gain work experience and to put into practice the knowledge and skills they have learned. Nursing courses have built-in training for students to experience while taking classes and education course have student training. Seventy-three students from the following programs were placed on internship training in the 2012-2013 academic year. The training began in October, 2012 and ran until July 2013. The internship program, with the assistance of employers, provide graduating students with the opportunity to refine their skills as they transition to the “real world” of work.

2012-2013 Internship Enrollment				
	Fall 2012	Spring 2013	Summer 2013	Total
AG	2	5		7
AM		2	2	4
BA	1	1	5	7
CT			6	6
EDEC		1		1
EDEE		1		1
ES		2		2
ET		1		1
GE			5	5
LS		4	4	8
OA	1	6	15	22
SE		1		1
TH			6	6
THTS	2			2
Total	6	24	43	73



Students attending Internship Workshop



TH students in Food and Beverages program

PROGRAM INITIATIVES

National Occupation Competency Testing Institute (NOCTI)

PCC is a member of NOCTI, an initiative that is the United States foremost provider of occupational competency testing for business, industry, education, labor, and military. The tests measure individuals' understanding of concepts and work-related tasks of a particular occupation. The students take Job-Ready tests to assess and improve job entry-level performance in preparation for entry into the workforce. The teachers take Experienced Work tests to assess professional and journey-level skills for certifying teachers' competence in their teaching areas.

LS Program Online

During this reporting period, LS instructor David Thompson continued with the program courses delivery via online. .

Dual Enrollment

Through collaboration with the Ministry of Education (MOE) and Palau High School (PHS), PHS students can enroll at PCC under the Dual Enrollment program. Credits earned by students will be held in escrow. When they graduate from high school and enroll at PCC, the credits will be awarded to them.

Teachers Training Academy

The Teachers Training Academy is slated for summer 2014. Program participants will be mainly elementary and secondary teachers and who will have the opportunity to earn three credits toward their certificates.

Cohorts

The Yap Department of Health and PCC established a cohort for 20 Yap nurses in spring 2005. Currently, there are 13 students in the nursing program. Three students have graduated from the program, Eleven (11) are continuing students. Based on their program plan, students will finish their program requirements in 2015. A third SDSU Bachelors Degree cohort with 23 students is currently underway. The students are tentatively scheduled to graduate in December 2014. A new Masters Degree cohort in Public Administration is scheduled to commence in Fall 2014.

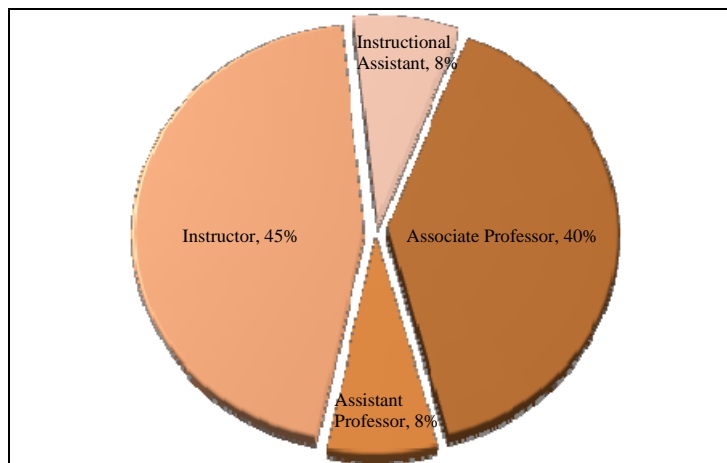
Penn Foster Career School (formerly Thomson Education Direct Training Programs (TED))

A Memorandum of Agreement (MOA) between PCC and Penn Foster to offer training on-line through PCC was signed in December 2003. The school provides programs to meet the needs of students leading to career specific diplomas in the following areas:

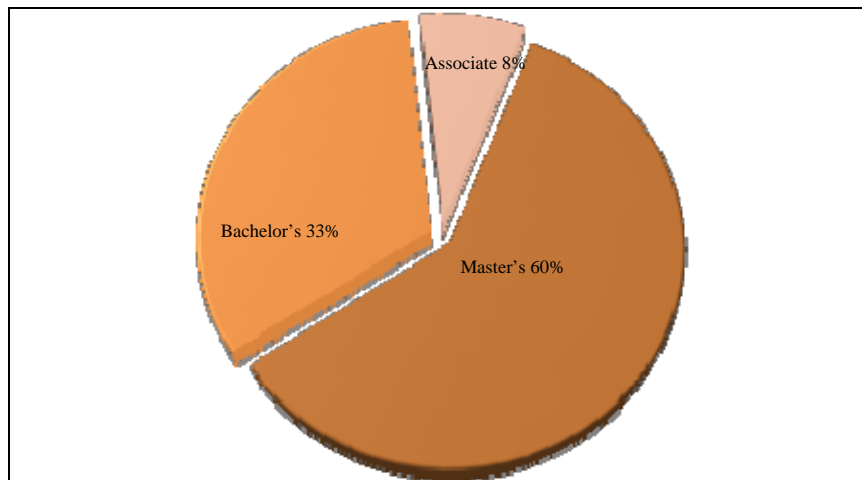
Carpenter	Auto Repair Technician	Dress Making/Design
Landscaper	Medical Office Technician	Air Condition/Refrigeration
Drafting with AutoCAD	Electronic Technician	Wild Life/Forestry Conservation
Occupational Therapy Aid	Small Engine Repair	Hotel/Restaurant Management
Aromatheraphy	Medical Transcriptionist	Child Care Management
Dental Assistant	Pharmacy Technician	Home Inspector
Electrician	Artist	Diesel Mechanic
Photographer	PC Specialist	Appliance Repair
Legal Secretary	Travel Agent	Telecommunication
TV/VCR Repair	Small Business	Desktop Publishing

INSTRUCTORS

BY RANK	Full-time Instructional Faculty	
Associate Professor	16	40%
Assistant Professor	3	8%
Instructor	18	45%
Instructional Assistant	3	8%
Total	40	100%



BY HIGHEST DEGREE	Full-time Instructional Faculty	
Master's	24	60%
Bachelor's	13	33%
Associate	3	8%
Total	40	100%



FACULTY SENATE ASSOCIATION

The purpose of the Faculty Senate Association shall be:

- a. To represent the official interests and needs of the association and its individual members in good standing.
- b. To protect the rights and privileges of the association and its members.
- c. To assist each member on any matter conducive to his/her being an employee of the college.
- d. To work mutually with the Administration.

With this fundraising initiative, FSA has been able to provide scholarships to students for the academic year 2012-2013. FSA believes that the scholarships will ease students financial burden and enable him or her to adapt to the expectations and demands of college roles and responsibilities.



FSA Officers awarding scholarships to students recipients.

OPERATIONS & MAINTENANCE IMPROVEMENT PROGRAM

Mission

To provide appropriate, up-to-date, short-term training in the area of infrastructure operations and maintenance for employees of utilities, state governments and the national government.

Subject	Agency	Number of Participants	Duration (Hours)	Instructor	Date
WorkZone Safety	KSG	16	24	Kintaro	10/30/12
WorkZone Safety	KSG	10	24	Kintaro	10/31/12
Filter O&M	Rural Water Operators	12	48	Uehara	11/10/12
Electrical Troubleshooting	Rural Water Operators	14	50	Taroy	1/26/13
Outboard Troubleshooting	PAN Rangers	7	40	Ngirngebedangel	3/23/13
Electrical Troubleshooting	Rural Water Operators	9	50	Taroy	3/16/13
Excel	MPIIC	11	24	Yaoch	4/12/13
Electrical Troubleshooting	Rural Water Operators	11	50	Taroy	6/16/13
Guardrail Maintenance	BPW & KSG	9	16	Rekemsik	7/10/13
Sign Maintenance	BPW & KSG	10	16	Rekemsik	7/23/13
Total		109	342		

This was the first year of activity for a new 2-year grant for \$100,000 to cover the costs of continuing maintenance-related training, awarded by the U.S. Department of Interior: the name of the program has been changed to Maintenance Assistance Program (MAP), and the matching funds obligation, which had required the college to pay for 25% of the program, has been waived.

The MAP program learning outcome states that trainees will be able to utilize technology for their professional needs. All of our training was infrastructure related. From the table above, it can be seen that 7% of our trainees took courses in equipment maintenance, 41% took road maintenance courses, 10% were in computer software classes, and 42% attended classes for water operator training.

All of our trainees were either state or national government employees, or utility employees. 19% of the trainees were from various offices and ministries within the national government, 39% were from state governments, and 42% were from utilities. Of these trainees, 51% were living in Koror, and 49% were living in rural states.

During this year we continued developing and implementing our road maintenance training courses in response to an initial road maintenance survey conducted in 2011. Courses in traffic work-zone safety, guardrail maintenance and sign maintenance were conducted. Appropriate materials for pothole repair, ditch and culvert maintenance and basin cleaning have also been identified.

We Guarantee Quality and Excellence

As Palau continued its transition to a water utility branch in PPUC, we completed the development and production of customized operating booklets for the rural water systems, and have begun work on similar booklets for the Koror sewer collection system. During the transition to public utility, it is our intention to meet any and all training needs that arise.

The MAP coordinator attended conferences during July and August. The first was the annual conference for technical centers that develop road maintenance training programs and materials for local governments in the U.S. It was held in Boise, Idaho, July 22-25. The second conference was the American Public Works Association's annual Congress and Exhibition held in Chicago, Illinois, August 25-28.



Rural Water Operators Training



Rural Water Operators on Job Site



*PAN Rangers troubleshoot
Outboard Marine Engine*



BPW & KSG routine sign maintenance



BPW & KSG repairing guard rails

CONTINUING EDUCATION

Mission

Continuing Education is an outreach arm of the College accessible and flexible to respond to the diverse educational and training needs of the community it serves by ensuring that quality service is provided to meet the customers' expected outcome.

Objectives

- Conduct state by state visits to assess community training needs, interested individuals to attend the Adult High School program, and disseminate information relevant to training opportunities.
- Work closely with ministries, agencies, private sectors and non-profit government organization to assess training needs and establish program sponsorship.
- Develop student learning outcome for continuing education/professional development and competency education offering.
- Provide appropriate and effective apprenticeship programs.
- Provide crash courses to support in-service training of newly hired teachers who lack the basics in teaching skills.

The division oversees the Adult High School and the Educational Talent Search programs which provide educational services to elementary and high school students. The task becomes challenging due to limited resources. The division has three full time staff, a Dean, a secretary, and an office clerk, who are responsible for not only meeting the five identified objectives, but also provide support to the Talent Search and Adult High School activities.

For this reporting period, CE served a total of 284 participants in various training and provided support services to 1,009 people.

Continuing Education collaborated with Human Resources to provide professional development programs for PCC staff. This initiative helps the College to meet the staff development objective under the PCC 15-year Institutional Master Plan to upgrade the skills and knowledge of College personnel.



Summer Youth Program Orientation



Students Internship Workshop conducted



CE hosts various training for students and staff stu-

We Guarantee Quality and Excellence

Office of Continuing Education

No.	Trainings/Workshop	Hours	# of Participants	Trainer	Participating Agency
1	Basket Weaving	4	11	Evelyne Techibelmel	Community
1	Clinical Counseling	300	6	Marla Ito	MOH Staff
1	Basic Mandarin Conversation I	24	11	Percy Liu	Community
1	Basic Mandarin Conversation I	24	16	Percy Liu	Community
1	Advance Mandarin Conversation	18	15	Percy Liu	Community
1	Caregiver Training	12	15	Dr. Silvia Osarch	Community
1	Caregiver Training	12	10	Dr. Silvia Osarch	Community
1	Caregiver Training	12	11	Dr. Silvia Osarch	Community
1	Caregiver Training	12	10	Dr. Silvia Osarch	Community
1	Summer Kids Program - Math	40	13	Miriam Anastacio	Elementary Student
1	Summer Kids Program - Math	40	16	Judson Butelbai	Elementary Student
1	Summer Kids Program - Math	40	11	Osamu Ngirchchol	Elementary Student
1	Summer Kids Program - English Reading & Writing	40	18	Alvina Marcil	Elementary Student
1	Summer Kids Program - English Reading & Writing	40	12	Judson Butelbai	Elementary Student
1	Summer Kids Program - English Reading & Writing	40	10	Osamu Ngirchchol	Elementary Student
1	Summer Kids Program - Palauan Orthography	40	8	Miriam Anastacio	Elementary Student
1	Summer Kids Program - Keyboarding	40	10	Karen Mobel	Elementary Student
1	Cultural Summer Youth Program - Bamboo Raft Making	108	4	Albert Soaladaob	Palau Youth/WIA
1	Cultural Summer Youth Program - Fish Trap Making	108	5	Felix Floriano	Palau Youth/WIA
1	Cultural Summer Youth Program - Weaving	108	4	Alfonsa Bintorio	Palau Youth/WIA
1	Cultural Summer Youth Program - Weaving	108	5	Dilchur Ruluked	Palau Youth/WIA
1	Cultural Summer Youth Program - Weaving	108	4	Sisbartol Holan	Palau Youth/WIA
1	Cultural Summer Youth Program - Weaving	108	5	Jury Kebekol	Palau Youth/WIA
1	Cultural Summer Youth Program - Chanting	36	14	Sariang Timulch	Palau Youth/WIA
1	Cultural Summer Youth Program - Chanting	36	13	Dembert Sbal	Palau Youth/WIA
1	Cultural Summer Youth Program -Uchelel Belau Mythology	36	27	Hermana Ramarui	Palau Youth/WIA
26	Total	1,494	284		

We Guarantee Quality and Excellence

Office of Continuing Education

No.	Facility Use (Services)	Hours	# of Participants	Contact Person	Participating Agency
1	CE Staff Monthly Meeting	2	7	Dean Wally	PCC Staff
2	L-Sat Testing	4	2	Dean Daniel	PCC Staff
3	Pacific Adaptation to Climate Change (PACC)	2	6	VP Thomas	Members
4	CRE meeting with JICA	3	9	VP Thomas	Members
5	CE Staff Monthly Meeting	2	7	Dean Wally	PCC Staff
6	FSM Student meet with FSM Congressmen	2	34	Mekreos Silil	PCC Student
7	COSFA/Retention Committee	2	6	Director Katosang	Members
8	Graduation Organizing Committee	3	9	Director Adachi	Members
9	Upward Bound Student Workshop	2	13	Helen (UB)	High Sch. Student
10	Financial Aid Student Recruitment	2	4	Leona Tkel	High Sch. Student
11	Upward Bound Student Workshop	3	19	Helen (UB)	High Sch. Student
12	Upward Bound Student Workshop	3	2	Helen (UB)	High Sch. Student
13	Admission & Financial Aid Session	1	15	Leona Tkel	PCC Student
14	Financial Aid Night Session	2	50	Leona Tkel	High Sch. Student & Parents
15	Graduation Organizing Committee	2	8	Director Adachi	Members
16	Financial Aid Student Recruitment	2	17	Leona Tkel	High School Student
17	IELLP Implementation	2	3	Dean Wally	PCC Staff
18	CE Staff Monthly Meeting	2	8	Dean Wally	PCC Staff
19	Upward Bound Student Workshop	1	28	Helen (UB)	High School Student
20	Admission & Financial Aid Session	1	23	Leona Tkel	PCC Student
21	Admission & Financial Aid Session	1	22	Leona Tkel	PCC Student
22	Graduation Organizing Committee	2	11	Director Adachi	Members
23	CE Staff Monthly Meeting	2	8	Dean Wally	PCC Staff
24	Graduation Organizing Committee	2	9	Director Adachi	Members
25	Financial Aid - Chuuk Student Scholarship	2	14	Mekreos Silil	PCC Student
26	Financial Aid - Chuuk Student Scholarship	2	15	Mekreos Silil	PCC Student
27	CE Staff Monthly Meeting	2	7	Dean Wally	PCC Staff
28	Graduation Organizing Committee	2	5	Director Adachi	Members
29	Agriculture Student Workshop	3	26	Jade Kloulubak	PCC Student
30	Graduation Organizing Committee	2	7	Director Adachi	Members
31	CE-SYP teachers orientation	2	9	Dean Wally	Applicants
32	CE-SKP teachers orientation	2	5	Dean Wally	Applicants
33	CRE Staff Meeting	2	10	VP Thomas	PCC Staff
34	CPH-112 Alcohol Control Class	3	21	Alex Ngiraingas	PCC Student
35	CPH-112 Alcohol Control Class	3	20	Alex Ngiraingas	PCC Student
36	FSM Student - Permit Renewal	2	29	Mekreos Silil	PCC Student
37	CPH-112 Alcohol Control Class	3	22	Alex Ngiraingas	PCC Student
38	CPH-112 Alcohol Control Class	3	20	Alex Ngiraingas	PCC Student
39	CPH-112 Alcohol Control Class	3	21	Alex Ngiraingas	PCC Student

We Guarantee Quality and Excellence

40	CE Staff Monthly Meeting	2	8	Dean Wally	PCC Staff
41	CPH-112 Alcohol Control Class	3	21	Alex Ngiraingas	PCC Student
42	CPH-112 Alcohol Control Class	3	22	Alex Ngiraingas	PCC Student
43	CPH-112 Alcohol Control Class	3	22	Alex Ngiraingas	PCC Student
44	CPH-114 Mental Health Class	4	21	Alex Ngiraingas	PCC Student
45	Pacific Adaptation to Climate Change (PACC)	2	8	VP Thomas	Members
46	CPH-114 Mental Health Class	4	19	Alex Ngiraingas	PCC Student
47	Financial Aid Staff Meeting	2	5	Director Katosang	PCC Staff
48	CPH-114 Mental Health Class	4	22	Alex Ngiraingas	PCC Student
49	CPH-114 Mental Health Class	4	20	Alex Ngiraingas	PCC Student
50	I.C.R.C Test	4	5	Alex Ngiraingas	Community
51	CPH-114 Mental Health Class	4	21	Alex Ngiraingas	PCC Student
52	CPH-114 Mental Health Class	4	20	Alex Ngiraingas	PCC Student
53	CPH-114 Mental Health Class	4	21	Alex Ngiraingas	PCC Student
54	CPH-114 Mental Health Class	4	21	Alex Ngiraingas	PCC Student
55	CE Staff Monthly Meeting	2	7	Dean Wally	PCC Staff
56	CPH-114 Mental Health Class	4	21	Alex Ngiraingas	PCC Student
57	CPH-114 Mental Health Class	4	20	Alex Ngiraingas	PCC Student
58	CPH-114 Mental Health Class	4	21	Alex Ngiraingas	PCC Student
59	CPH-114 Mental Health Class	4	22	Alex Ngiraingas	PCC Student
60	CPH-144 Non Communicable Disease Class	4	13	Alex Ngiraingas	PCC Student
61	CPH-144 Non Communicable Disease Class	4	9	Alex Ngiraingas	PCC Student
62	Financial Aid Staff Meeting	3	6	Director Katosang	PCC Staff
63	Tuition & Fees Committee	2	4	Dean Daniel	Members
64	CE Staff Monthly Meeting	2	6	Dean Wally	PCC Staff
65	Pacific Adaptation to Climate Change (PACC)	3	6	VP Thomas	Members
66	CE Staff Monthly Meeting	2	5	Dean Wally	PCC Staff
67	Retention Committee	3	7	Director Katosang	PCC Staff
68	CE Staff Monthly Meeting	2	8	Dean Wally	PCC Staff
69	Charter Day Organizing Committee	3	9	Todd N.	PCC Staff
70	Graduation Organizing Committee	3	6	Hedrick Kual	PCC Staff
71	CE Staff Monthly Meeting	2	5	Dean Wally	PCC Staff
72	Financial Aid Night Session	2	15	Director Katosang	High Sch. Student & Parents
73	Financial Aid Night Session	2	6	Director Katosang	High Sch. Student & Parents
74	Financial Aid Night Session	2	6	Director Katosang	High Sch. Student & Parents
74	TOTAL	194	1009		



Summer Youth Computer Class



Summer Youth English Class

EDUCATIONAL TALENT SEARCH

Our Mission

To increase the number of youth from disadvantaged background to complete high school, and to complete a program of post-secondary education institution of their choice.

Personnel

The project has a total of seven staff: Six full time and a part time project director who oversee the implementation of activities and services.

Program and Services

For 2012-2013 school year, we served five (5) elementary schools and three (3) high schools in accordance with the guidelines provided by the regulations and requirements of the Talent Search Grant.

Elementary Schools and High Schools Breakdown		
Elementary Schools	Number of Participants	Number of Tutors
Airai Elementary School	38	2
George B. Harris Elementary	51	3
Melekeok Elementary School	37	1
Maris Stella School	22	1
Meyuns Elementary School	46	2
High Schools		
Emmaus High School	23	1
Mindszenty High School	66	3
Palau High School	204	6
Adult High School (Reentry)	13	0
TOTAL	500	19

Objectives

These objectives are mandatory by the U.S. Department of Education and must be accomplished annually.

1. 65% of non-senior participants served during each project year will complete the current academic year and continue in the school for the next academic year, at the next grade level.
2. 65% of seniors served during the project year will graduate during the project year with a regular secondary school diploma within the standard number of years.
3. 30% of seniors served during the project year will complete rigorous secondary school diploma program of study and will graduate during the project year with a regular secondary school diploma within the standard number of years.

4. 80% of participants, who have graduated with a regular secondary school diploma, during the project year, will enroll in an institution of higher education by the fall term immediately following high school graduation or will have received notification, by the fall term immediately following high school, from an institution of higher education, of acceptance but deferred enrollment until the next academic term (e.g. spring term).
5. 45% of participants served during the project year, who enrolled in an institution of higher education, by the fall term immediately following high school graduation or by the next academic term (e.g. spring term) as a result of acceptance but deferred enrollment will, complete a program of postsecondary education within six years.

Highlights

Fall Semester 2012

- Recruitment at target schools
- Seniors and Parents Meeting
- Tutoring sessions on Mondays to Thursdays
- ETS Participants (Students): Numerous trips to Babeldaob, Airai & Koror areas, diving sites, and Rock Islands for observations and exposure to developing projects, historical and cultural sites, congress in sessions, and work on all subject area related assignments.
- TOEFL Practice

Spring Semester 2013

- TS Participants (Students): Numerous trips to Babeldaob, Airai & Koror areas, diving sites, and Rock Islands for observations; and exposure to developing projects, historical and cultural sites; and to work on all subject area related assignments.
- Tutoring sessions on Monday to Thursday.
- Elementary School Participants: Visit high school campuses.
- Introduction to Cash Course.
- TOEFL Practice.

Professional Development

- COE's 31st Annual Conference
- CACG Video Trainings
- Adolescent Behavioral Concerns w/in Classroom.
- WESTOP Conference in Hawaii

Evaluation/Assessment for future improvements:

- Abide by the Program's TimeLine and Plan of Operation.
- Initiate more vigorous recruitment.

2013 is where we met up with our numbers and the percentages in three of our objectives were met. The fourth objective is still a struggle since many of our high school graduates chose to go into the military rather than to college. However, it was more of settling in and making sure that we continue to be more productive from here on. Moreover, we serve 11 to 27 years old and 500 students in Palau.

ADULT HIGH SCHOOL

Mission

PCC AHS seeks to enable adult students to further develop their primary skills while engaging in activities that will help them obtain a high school diploma thereby increasing their chances to either: 1) pursue a degree in post-second education, or 2) find a job with entry-level skills.

Personnel

The AHS program currently has five staff: Two full time and three part time.

Programs and Services

The Adult High School program is an alternative high school program that offers an opportunity to adult Palauan who have not earned a high school diploma to do so. The PCC Adult High School was designed to provide instruction and educational activities to adult students who did not graduate from high school to develop their knowledge and skills to become "functionally competent" members of their respective communities. ("Functionally competent" is defined as the ability to apply a set of skills to meet societal demands and/or entry level jobs).

The program offers two tracks: Vocational Track and College Preparation Track. The Vocational track prepares students for entry-level employment while the College Preparation track prepares students to enter postsecondary education.

Highlight

During this reporting period, sixty-five (65) students enrolled in the program for the School Year 2012-2013 as follows:

2012-2013 Program Enrollment	
Location	# of participant
PCC Campus	33
Ngeremlengui State	14
Peleliu State	18



AHS Ngeremlengui Students



AHS staff in training

Community Involvement

In cooperation with state governors of Peleliu and Ngaremlengui, the 2012-2013 students continue with their academic courses at both locations. Fourteen students in Ngaremlengui cohort is expected to complete the vocational track in May of 2014.

Evaluation/Assessment For Future Improvements

Two recommendations for improvement based on our last Program Review which are science lab accessible to AHS students to support their science lab learning and a dedicated vehicle for use to do site visits of current program sites and do recruitment activities are ongoing. At the present, the Talent Search vehicle can be used to conduct site visits, so it is not a critical issue now.



AHS Graduates at the Commencement Exercises

We Guarantee Quality and Excellence

Alingano Maisu's 4th Non Instrument Navigation Trip

Alingano Maisu set sail on Sunday, Feb. 24, 2013 from Drop-Off dock with excited cheers and farewell greetings from college officials, families, friends, and spectators. The non-instrument voyages integrate classroom learning of non-Instrument navigation to real-life learning experiences. The journey was to make a first stop at the Southwestern island of Sonsorol then continue on to the island of Ulithi in Yap, and return to Palau in April 2013.

On March 4, 2013 Alingano Maisu activated a distress signal and had to return to Koror due to a leakage found in the port stern sealed hatch and therefore was taking in so much water. Scheduled to return in April 2013, the trip was aborted and all crew and students returned unharmed. The vessel was rescued and have since been repaired and is now ready to be used as a platform for this important and unique program.

Alingano Maisu The Voyagers

Sesario Sewralur, Master Navigator
Miano Sowraenpiy, Crew
Albino Esoailug, Crew
Kurt Ngiraked, Crew/Student
Rodney Kazuma, Crew/Student
Murais Sebangiol, Crew/Student
Arbedul Koshiba, Crew/Student
Aylie Baker, Volunteer/Student/Voyager
Kazuyo Hayashi, Volunteer/Student
Helen Anne Schonwalter, Guest



TAN SIU LIN PCC LIBRARY

The Tan Siu Lin PCC Library is an integral part of the campus community. The library, with its comprehensive collection of resources, research assistance, access to information and communications technology, is a vital part of every student's academic experience. The library is a department of the college under the Office of the President. The mission of the PCC Library is to support the academic programs at the college and to promote lifelong learning in the wider community through high-quality, accessible resources, information literacy training, and public outreach activities.

I. Performance Report

During fiscal year 2012–2013, the Tan Siu Lin PCC Library worked to provide comprehensive resources and services to PCC students, faculty, and staff and to the general community. Key improvements took place in the areas of a new Librarian; grant projects; library staff professional development; collection development; orientations, instruction and community outreach; and self-evaluation surveys and the library 3-year accreditation assessment.

New Librarian

Filling the vacancy created when Librarian Jessica Brooks resigned her position in July of 2012, David Thompson became the PCC Library's fifth librarian in September of 2013. Librarian David Thompson served for a year as PCC's Library & Information Services instructor before accepting the position at the library. Having a librarian with a master's in library science approved by the American Library Association enables PCC to fulfill accreditation standards for the library. Technician Pioria Asito adeptly served as the library's manager during the absence of a librarian.

Grant Projects

The Institute of Museum and Library Services (IMLS) Library Services and Technology Act (LSTA) grant activities between PCC and the Ministry of Education are ongoing. The 2012-2013 grant cycle provided \$42,385.00 for library initiatives in Palau. Along with already having provided monies during the last fiscal year for Palauan library workers, including one PCC Library staff member, to attend the Pacific Islands Association of Libraries, Archives, and Museums (PIALA) annual conference in Saipan, Commonwealth of the Northern Mariana Islands, and with having paid for equipment (two laptop computers, one data projector, and two typewriters) to be used in carrying out the PCC Library and MOE joint-sponsored Summer Reading Camp, this funding also made possible the following activities during this fiscal year: Follett site licenses were renewed for libraries participating in the Palau Union Catalog, an online catalog of most of the library collections in Palau; a dedicated Internet line was established between PCC and MOE to allow school libraries to be part of the Palau Union Catalog; a consultant (the Summer Reading Camp Trainer), supplies, materials and refreshments were all procured for the weeklong Summer Reading Camp. These grant activities were completed by September 2013.

Library Staff

The PCC Library currently employs eight full-time, permanent staff members: one Librarian, four Library Technicians, and three Library Assistants. In addition, the library welcomed aboard a short-term contract Library Assistant in September. Currently, two library staff members are still pursuing their degrees in the AAS Library & Information Services Program at PCC.

Professional Development

Trainings and workshops for library staff continue to be supported by the college. In July, one staff member attended the PI-ALA annual conference in Saipan. Staff also benefited from on-island trainings, including a customer service training hosted by Willy Wally of Continuing Education and a time management training hosted by Omdasu Ueki of Human Resources. Acting Manager Pioria Asito led the library staff through a series of exercises to enable them to work more ably together by knowing each other better.

Collection Development

During the 2012-2013 fiscal year, 1,212 titles were added to the collection: 26 titles through the PCC funds (\$2,270.11), 49 titles through grant monies (\$1,270.30), and 1,137 titles through donations. These donations came from numerous sources; both fiction and non-fiction, they helped to expand the general collection, the Micronesia-Pacific collection, and the foreign language collections. One particular donation that stood out this year came from the Pacific Resources for Education and Learning (PREL). PREL donated over 400 titles, mostly in the area of education. Along with cataloging new additions, a Library Technician and a Library Assistant have been dedicated to performing collection maintenance, searching out and correcting any errors that might make an information resource more difficult for a library user to find through the online catalog.

Orientations, Instruction, and Community Outreach

From October 2012 to September 2013, the library provided library orientations and instruction sessions to over 400 students, including ten introductory college courses (SS 100), a Meyuns Kindergarten class, group tours during Career & Technical Educational Awareness Week, and two classes of students from the Public Health Nursing program. Through aid from an IMLS-LSTA grant, the Palau Public and PCC Libraries were able to sponsor a weeklong Summer Reading Camp for kids. Elementary school children participated in the week of activities centered around the importance of reading and a love for books, including camp t-shirts with the motto "I'm a reader!" on the back. Plans have been set in motion to utilize the Kids' Korner of the library in the coming months for story times with local pre-school student. Since last March of 2013, the Palau Public Library and the PCC Library have collaborated in implementing the 2012-2013 IMLS-LSTA grant bookmobile services, providing interlibrary loan services and library programs to elementary schools throughout Palau. During this past year, three PCC Library staff members were involved in the project.

Library Evaluations: *Library User Satisfaction Survey* and *Library Computer Lab Evaluation*; *Library Operating Hours Survey*; *2008-2011 Non-Instructional 2nd Cycle Program Review*

The library continues to distribute the *Library User Satisfaction Survey* during each semester to students, as well as to faculty, staff, administrators, and the general public. This survey attempts to succinctly assess technical services, customer service, print collections, and more. The data gathered from these surveys will be analyzed and used to improve library services. A *Library Computer Lab Evaluation* is collected from computer lab users at the end of each mid-term exam period in order ensure the continual assessment and improvement of computer lab services.

Amid questions last summer (2013) surrounding the adequacy of the library hours, a survey was distributed to library users—PCC students, faculty, and staff, as well as community patrons—to get their opinions. The *Library Operating Hours Survey: Summer 2013* revealed that library users preferred the library hours to remain unchanged. Feedback from visiting accreditation officials and comparisons done on the NCES "Library Comparison" website (in association with the US Department of Education) reveal that the PCC Library offers more hours to its patrons than its peers (the PCC Library is open 67 hours in a typical week compared to 53 hours offered by peer institutions in the region and 63 hours by peer institutions in the United States).

We Guarantee Quality and Excellence

In addition to these surveys, the library is in the process of completing its 3-year assessment for the Western Association of Schools and Colleges' Accrediting Commission for Community and Junior Colleges (ACCJC): the *2008-2011 Non-Instructional 2nd Cycle Program Review*. A draft was recently finished, and the final version was completed before the end of 2013.

II. Present and Future Initiatives for 2012 - 2013

- Strategic purchasing of new materials to improve and update the library collection.
- Continued cooperation with PCC maintenance to provide solutions for ongoing lighting and air conditioning needs
- A recommendation from the library is awaiting the President's approval for the repair of the library's security gates, a necessary step both in ensuring the security of library resources and in satisfying accreditation criteria
- Increased cooperation with faculty regarding collection development, assistance with citations and research for their classes, and increased awareness of how the library can serve them and their students
- More concentrated efforts to improve, through specific goals and programs, the overall information literacy of the student body
- Active attention, instead of just passive acceptance, should be given to the needs and wants of community library users, especially since they form the library's largest group of borrowers
- A re-focusing of library programming on children and teens of the surrounding community through hosting activities in the Kids' Korner and Teen Space
- Consideration should be given as to how the library can bridge the gap, whether through seminars or other means, between the practical information on its shelves and how it could be used by community members to bring practical improvements to their lives
- Continued collaboration with the Palau Public Library to implement the Palau Bookmobile service
- Continued planning for possible outreach with library services to the prison

III. Statistics

The following charts illustrate the number of computer users, total hours of computer use, number of library visits, circulation of books and materials, number of patrons and circulation by patron type, number of books cataloged, number of resources donated, number of times the conference room was used, and year-to-date expenditures.

	Computer Users	Number of Hours
October 2012	1924	1397.84
November	2017	1521.84
December	984	1005.55
January 2013	1867	1351.12
February	1983	1344.95
March	1605	1566.01
April	1933	2063.11
May	1609	1336.35
June	1535	1413.62
July	1365	1293.44
August	1823	1689.73
September	1838	1690.64
Total	20,483	17,673.93

	Books Cataloged
October 2012	
November	Combined months 88
December	51
January 2013	137
February	157
March	86
April	43
May	47
June	64
July	68
August	145
September	351
Total	1,243

We Guarantee Quality and Excellence

	Gate Count: Number of Library Visits	Circulation of Books and Materials		Conference Room Times Used	YTD Expenditures
October 2012	0	2,194	October 2012	14	50.00
November	0	2,000	November	8	1,415.30
December	0	1,390	December	4	13,625.50
January 2013	0	2,185	January 2013	12	934.68
February	0	2,362	February	20	2,013.29
March	0	2,373	March	6	4,333.48
April	0	2,519	April	6	451.45
May	0	1,907	May	4	4,055.76
June	0	2,381	June	15	18,643.90
July	0	2,040	July	23	311.44
August	0	2,017	August	14	1,810.95
September	0	2,945	September	1	0
Total	N/A) (gates broken)	26,313	Total	127	47,645.75



Library Science Instructor gives program overview.

Donated Resources				
Month	DVD (bx/set)	DVD (ea.)	Books (bx.)	Books (ea.)
October 2012		5		18
November				56
December	1 set			40
January 2013			5	78
February	2 bx.	96	1	18
March			4	10
April		6		20
May		22	15	16
June		18		21
July		26	7	48
August		18	2	39
September		6	3	19
Total	3 set/bx.	197	37 bx.	383

# of Patrons and Circulation by Patron Type		
Patron Type	Number of Patrons	Circulations
Board of Trustees	38	0
Community Adult	2,633	5,390
Community Elementary	2,200	1,077
Community High	1,636	1,628
Faculty	87	669
PCC Staff	119	1,340
PCC Student	2,859	2,913
Total for Patron	9,537	13,025

COOPERATIVE RESEARCH & EXTENSION

Mission

The Cooperative Research & Extension of Palau Community College is to collaborate with partners and clients to generate and develop and disseminate practical, relevant and sustainable technologies and knowledge in agriculture, food and human sciences to benefit the people of Palau.

Executive Overview

Integrated research and extension programs to address economic, social, and ecological issues continued with special emphasis on the national priority areas. These programs were conducted through the cooperative research and extension department of Palau Community College (PCC). Dissemination of research findings and technologies to sustain and improve the quality of life in Palau's communities was carried out.

Mitigation and adaptation programs on climate change; food security, food safety and childhood obesity programs were launched and supplemented programs on proper hygiene and healthy lifestyle that are important in safeguarding the well-being of citizens. The rising sea level due to climate change has become a really serious concern as Palau witnessed the catastrophic effects of this phenomenon on shorelines.

The increasing cost of food and fuel has forced people to make adjustments necessary for the new economic, social and environmental conditions and find innovative methods of farming of crops, livestock, and aquaculture species. Research and extension activities promoted agricultural productivity and food security, self-sufficiency, and enhancing quality of life. The utilization, processing and development of new products from staple food crops that are acceptable to the native population and in local markets continued. Trials on taro varieties for their suitability to grow under atoll conditions continued and the micro propagation of elite (disease-free and high yielding) varieties that will improve the quality and quantity of certain crop varieties for food security were ongoing. Continued germplasm maintenance of staple root crops has insured the genetic conservation of these valuable resources for future generations. This has also facilitated the continue supply of planting materials to growers and allow in-vitro multiplication of other food crops.

Aquaculture demonstration projects continued to transfer the technical know-how to the citizens of Palau and Micronesians to enable them to actively engage in projects that could provide alternate income generation with the overall aim of improving the socio-economic conditions of islanders. Efforts were made to initiate and improve site-specific multi-species aquaculture and transfer simple and appropriate feeding technology for targeted aquaculture species to farmers to formulate and prepare their own feeds. Other projects provided stock enhancement to replenish depleted stocks.

Other outreach programs continued on issues ranging from food safety and quality, food security, families and youths, water quality, and managing limited natural resources and the environment. Health and nutrition programs continued on the importance of healthy lifestyles, which included physical activity and consumption of safe and nutritious local food to combat obesity, diabetes, heart diseases and other NCDs. The youth development programs provided information to increase knowledge and appreciation of marine and terrestrial flora and fauna and more students are exposed to computers, which provided the opportunity to use the Internet as an introduction to electronic connectivity and information gathering. Water quality education programs continued as collaborative efforts with international and regional organizations, government agencies, and community groups. Sustainable agriculture and Integrated Pest Management (IPM) programs provided farmers information on agricultural production practices that protect the fragile island ecosystem integrity and biodiversity. Programs continued on resistant crop varieties and practical biological pest control measures to provide useful tools for stakeholders to combat crop pests and diseases and increase productivity. The use of beneficial organisms was emphasized to reduce pest threats on crops.

AQUACULTURE

Hatchery produced crablets with total carapace length was about 2 inches were given to two local crab farmers for grow-out trial in pens inside the mangroves. A floating fish cage was completed and was stocked with rabbit fish and milkfish Brood-stock. Walk-in visitors, school children and people in the government visited the hatchery and fish cages to observe the on-going aquaculture activities.

Positive results on the larval rearing, nursery and grow-out trials created a positive outlook to the people regarding the future of aquaculture activities to the resource of mangrove crabs and rabbit fish in the country. Some crab farmers have experienced being fined by the fish and wildlife agency for catching and keeping undersized wild caught mangrove crabs in their farm. Those who are interested to grow rabbit fish loose interest because of so many problems encountered in managing a fixed pen enclosure. Despite of the absence of the researcher, Aquaculture staff were able maintain the fish stock and the facilities well. The reinstatement of an aquaculture researcher is very crucial in order to continue the development of aquaculture in Palau.



YOUTH AND WATER PROGRAMS

The Youth program assisted two schools by coordinating and organizing volunteers to judge 143 students' projects from Koror Elementary school and Palau Mission Academy. Physical Fitness activities were conducted in Airai state for both youth group and children group. There were 91 children who participated in the children Mega Sports camp and 41 youths who participated in the Sports Fellowship. The activities conducted helped improve youths and children physical health as well as social skills and relationships.

Family bonding activities, such as, Easter Family Fun day, movie nights and community clean ups were also conducted where families (parents and children) participated to strengthen family relationships and positive social skills.



Students from various schools participating in CRE Youth Program

FAMILY AND CONSUMER EDUCATION

A. Product Development for Food Security in Palau

Development of local foods in Palau, such as fish, coconuts, and bananas – in addition to root crops – will help reduce food importation and enhance food security contributing to the Gross Domestic Product (GDP) from the Agriculture Sector. It also supports the tourism industry by providing local foods to tourists. The impact of this project is focused on the public awareness on locally produced food products which enable consumers to utilize farm produce into value-added foods for their consumption and for business opportunities.



B. Product Development of Rabbit fish and Crustaceans in the Republic of Palau

Rabbit fish (*Siganus fuscescens*) locally known as "Meas" is a favorite fish of Palauan, and therefore it commands a great deal of attention for its propagation and processing. This project is in support of the on-going projects of the Aquaculture Department of PCC-CRE, namely, rearing of rabbit fish, and mangrove crabs. Fish and seafood in general are rich sources of omega-3 fatty acids which are unique in their ability to lower levels of triglycerides in the blood, lessening the likelihood of a heart attack or stroke. Product development was conducted on rabbit fish in coconut milk, rabbit fish soup, and rabbit fish fillet. The impact of this project is focused on processed foods from these materials that will contribute to the food security concerns in Palau and also provide means of livelihood for fishermen and other interested entrepreneurs.



EXPANDED FOOD NUTRITION EDUCATION PROGRAM

The Adult EFNEP program had an opportunity to visit and conduct classes to Ngerchelong Head Start parents, Peleliu Head Start parents, Ngerbeched Head Start parents, Expats Group 1, Expats Group 2, PCC Cafeteria staff/students and Ngaraard Group. A Total of 210 adults participated in the program and learned the basics of nutritious food which were covered in five lessons on food nutrition, food safety, exercise, food labels and General food budgeting. These five lessons were lectured at each of the five meetings and each meeting had two Hours per sessions. The participants were interested about the program and they had fun and at the same time learned the five lessons.



EFNEP and Food Technology had a chance to demonstrate and display some of the local food products to about 200 visitors during the Olchotel Belau fair celebration. The display was a success according to the official tasters.



Food Technology staff in Olchotel Belau Fair

AGRICULTURE PROGRAMS

A. Maintenance of Root Crops Germplasm

Continued maintenance of the taro, and sweet potato germplasm collections was done by weeding and fertilization to ensure good growth of these active field collections. On the other hand, the cassava germplasm collection was replanted to ensure continued maintenance of this active field collection. A Total of 3,554 or more taro planting materials were distributed to 190 farmers throughout the year. In addition to the taro planting materials, there were about 600 planting materials of cassava and sweet potatoes that were distributed to the farmers too.

B. Micropropagation and In Vitro Conservation of Taro

Micro propagation and in vitro conservation of taro are continually being done in the laboratory. There are currently 1380 cultures of 26 taro varieties being maintained in the multiplication medium. Also, 3,369 taro plants are being grown in plastic bags which are ready for distribution to farmers. In one quarter, a total of 1,598 tissue cultured taro planting materials were given out to farmers for planting in their farms.

C. Climate change adaptation projects

Sea level rise has led to salt water intrusion into taro patches which have been unfavorable for taro cultivation. Salt water intruded taro patches were surveyed and identified and sought ways to make these wetland taro areas productive once again. Prevention of salt water intrusion was done by raising dikes in the wetland taro patches. Secondary dikes were constructed inside the taro patches to hold and contain fresh water. Several taro varieties were planted in the salt water intruded taro patches to determine resistance to saline soil conditions. Farmers and communities affected by a super typhoon were also assisted in land preparation and planting root and vegetable crops to ensure security.

We Guarantee Quality and Excellence



One hundred eighty two families were assisted in establishing farms and planted root and vegetable crops to ensure production and food security in communities and areas that have experienced the severe impacts of climate change. In addition, 132 backyard gardens were planted with vegetables to augment their food supply.



R & D STATION VISITORS (Total Number of visitors for year 2013).

PCC-R&D provided tours to various schools, community clubs, organizations and foreigners who are living in Palau. The main purpose of their visits was to learn and explore what R&D offers to the community. About 500 students and adults visited the station this year.



FISCAL YEAR 2013

INCOME		
1	Tuition & Fees	\$2,387,667.17
2	Room	\$122,614.40
3	Board	\$232,322.48
4	ROP Appropriation	\$2,411,000.00
5	Sales of Service	\$70,439.26
6	US Federal Funds (Grants)	\$1,940,621.92
7	Restricted Appropriations (Endow)	\$123,350.74
8	Miscellaneous Revenues	\$497,936.45
	TOTAL INCOME	\$7,785,952.42
EXPENSES		
9	Furniture & Fixtures	\$25,113.55
10	Equipment	\$181,576.80
11	Insurance	\$18,629.11
12	Instructional Materials	\$71,758.75
13	Books & Library	\$124,398.80
14	Food Supplies	\$360,845.90
15	Consumable Supplies	\$331,273.57
16	Automobile/POL	\$99,323.44
17	Staff Development	\$3,568.00
18	Advertising	\$2,862.50
19	Printing & Reproduction	\$41,819.39
20	Communication	\$122,998.38
21	Utilities	\$411,745.40
22	Leased Housing	\$82,219.95
23	Student Recruitment	\$23,593.75
24	Contractual Services	\$120,458.16
25	Travel (Staff Development)	\$170,206.64
26	Health Insurance	\$154,203.31
27	Life Insurance	\$4,501.28
28	Pension Plan	\$134,178.28
29	Social Security	\$157,583.18
30	Salaries	\$3,049,598.08
31	Adult High School	\$79,863.70
32	Board of Trustees	\$24,643.21
33	Pension Buy Back	\$29,784.90
34	Accreditation	\$82,933.17
35	Non - FAS Pension	\$29,626.20
36	Palau Health Care Plan	\$73,991.74
37	Management Information System	\$204,000.00
38	Infrastructure Maintenance	\$54,307.97
39	Student Wage (FWS, AANAPISI & RIIA)	\$175,461.20
40	Tuition Waiver	\$32,020.00
41	SAT 10	\$3,498.01
42	Institutional Membership & Fees	\$163,202.75
43	Scholarships (SEOG & Pell Grant)	\$46,087.50
44	Depreciation Expense	\$336,942.04
45	Bad Debts	\$141,702.13
	TOTAL EXPENSES	\$7,170,520.74

Palau Community College's financial statements are audited annually by an independent auditing company in accordance with auditing standards generally accepted in the United States of America and the standards applicable to financial audits contained in Government Auditing Standards, issued by the Comptroller General of the United States. The College 2013 financial audits is on-going by the auditing firm of J. Scott Magliari & Company.

We Guarantee Quality and Excellence

BOARD OF TRUSTEES

Mrs. Bilung Gloria G. Salii	Chairperson
Mr. Masa-Aki N. Emesiochl	Vice Chairman
Mrs. Valeria Toribiong	Secretary/Treasurer
Dr. Emais Roberts	Member
Rev. Billy G. Kuartei..	Member
Ms. Summer R. Saunders.....	Student Trustee

EXECUTIVE COMMITTEE MEMBERS

Mr. Patrick U. Tellei, EdD.....	President
Mr. Jay Olegeriil	Vice President, Administration & Finance
Mr. Thomas Taro.....	Vice President, Cooperative Research and Extension
Mr. Todd Ngiramengior.....	Executive Assistant to the President
Mr. Robert Ramarui.....	Dean, Academic Affairs
Mr. Sherman Daniel.....	Dean, Student Services
Mr. William O. Wally.....	Dean, Continuing Education
Ms. Dahlia M. Katosang.....	Director, Admissions & Financial Aid
Ms. Kuye Belelai.....	Project Director, Upward Bound
Ms. Laura Mangham.....	Project Dir., Talent Search/Dir., Learning Resources
Mr. Tchuzie Tadao... ..	Director of Development
Mr. Clement Kazuma.....	Director of Physical Plant
Ms. Vernice Rechebei.....	Director, Learning Resource Center
Ms. Hilda N. Reklai.....	Director, Student Life
Mr. Bruce Rimirch.....	Director, Computer & Data Processing
Ms. Ligaya Sara.....	Institutional Research Analyst
Mr. Omdasu T. Ueki.....	Director, Human Resources
Ms. Uroi N. Salii.....	Director, Finance
Ms. Deikola Olikong.....	Accreditation Liaison Officer
Dr. Isebong Asang	President, Faculty Senate Association
Ms. Lesley Adachi.....	President, Classified Staff Organization
Mr. David Thompson.....	Librarian
Ms. Yosko C. Aichi & Kornelia Thomas.....	President, Associated Students of Palau Community College

FACULTY SENATE ASSOCIATION (FSA)

Dr. Isebong Asang.....	President
Ms. Johvanna Yaoch.....	Vice President
Ms. Midori Mersai.....	Secretary
Ms. Maria Joseph.....	Treasurer

CLASSIFIED STAFF ORGANIZATION (CSO)

Ms. Lesley Adachi.....	President
Mr. Lyndon Masami.....	Vice President
Ms. Norma Etibek.....	Secretary
Ms. Akiko B. Udui.....	Treasurer

PROFESSIONAL & SUPPORTING STAFF

Adachi, Lesley B.
Registrar
BS 1980, Fort Wright College
MA 2008, San Diego State University

Alexander, Grace
System Analyst
BS 1985, Northern State College

Alexander, Maurine
Counselor
BS 1988, Northern State College
MA 2003, San Diego State University

Andreas, Clara Maile
Assistant Project Director, Talent Search
BA 1988, University of Hawaii - Hilo
MA 2003, San Diego State University

Anthonio, Angelio
Academic Counselor/Advisor
BA 2001, University of Guam

Asito, Pioria
Acting Library Manager
AS 1998 & 2001, Palau Community College
BA 2011, San Diego State University

Belelai. Kuye
Project Director, Upward Bound
BA 1978, University of Colorado
MS 1979, California State University

Camacho, Juan
Lead Cook
Diploma 1978, Koror Elementary School

Dachelbai, Danielle
Cook
AAS 2012, Palau Community College

Daniel, Sherman
Dean of Students
BVE 2005, San Diego State University
MA 2008, San Diego State University

De Los Santos, Miguel A.
Researcher/Aqua culturist
BS 1992, University of Philippines
MS 2001, University of Philippines

Del Rosario, Dr. Aurora
Researcher/Horticulturist
BS 1966, College of Agriculture, Philippines
MS 1980, University of Philippines
PhD 1990, University of Philippines

Emesiochel, Demy
Accounting Technician
AAS 2012, Palau Community College

Etibek, Norma
Clerk Typist
AAS 2009, Palau Community College

Faletam, Alice
Resident Assistant
CA 2005, Palau Community College

Hanser, Don
OMIP Coordinator
BA 1972, University of Wisconsin

Haruo, Harline
Personnel Manager
AAS 2012, Palau Community College
AA 2000, Lassen Community College

Ignacio, Keith
Administrative Assistant
AS 1999, Palau Community College

Illilau, Tublai
Career/Transfer Counselor
BA 1999, Eastern Oregon University

Immanuel, Hellen
Assistant Project Director
BS 1985, St. Paul Bible College

Imetengel, Hugler N
Tracking & Data Coordinator
AS 1998, Palau Community College

PROFESSIONAL & SUPPORTING STAFF

Jerry, Pauline
Administrative Assistant
AS 2001, Palau Community College

Joseph, Jolene
Academic Counselor/Advisor
BA 2002, University of Guam

Katosang, Dahlia M.
Director, Admissions & Financial Aid
MA 1977, BA 1976 United State
International University

Kazuma, Clement
Director, Physical Plant
AS 1988, Micronesia Occupational College

Kazuma, Rodney
Maintenance Technician
AS 1997, Palau Community College

Kesolei, Umang O.
Security Service Officer
Diploma 1985, Palau High School

Kloulechad, Jade
Secretary
Diploma 1999, Palau High School

Kloulubak, Johnston A.
Security Guard
Diploma, 1978 George Washington
Senior High School

Kodep, Tessmarie U.
Student Account Supervisor
BS Business Administration
Eastern Oregon University

Koshiba, Arbedul
Maintenance Helper
CA 2006, Palau Community College

Kual, Hedrick
Counselor
BA 2005, Pacific Islands Bible College

Kyota, Verna D.
Secretary
AAS 2009, Palau Community College

Lukas, Hulda
Secretary
CA 1985, Micronesia Occupational College

Maech, Akilina
Administrative Assistant
AS 2002 & 2004, Palau Community College

Mangham, Laura S.
Project Director, Talent Search & Director,
Learning Resources
BA 1980, Trinity College
MA 2008, San Diego State University

Marero, Dr. Lydia M.
Researcher/Food Technologist
BS 1969, Arareta University
MS 1978, University of Philippines
PhD 1995, Seoul National University

Masami, Lyndon
Extension Agent/Research Assistant
A.S. 2011 Palau Community College

Melphy, Kazue
Clerk Typist
Diploma 1998, Bethania High School

Meltel, Jose
Cook
AAS 2009, Palau Community College

Merong, Grace
Library Technician
CA 2000, Palau Community College

Minor, Jasmine Stephanie
Federal Workstudy Coordinator
BS 2012, Western Governors University

Ngirachitei, Ephraim
Dormitory Manager
BA 1982, Hawaii Pacific College

PROFESSIONAL & SUPPORTING STAFF

Ngiraibai, Debbie
Accounting/Business Supervisor
AS 2002, Palau Community College

Ngiraikelau, Itwong
Clerk Typist/Research Assistant
CA 1981, Palau Community College

Ngiraingas, Debra
Counselor
BS 1992, Southern Adventist College

Ngiraklei, Annalisa
Secretary
AAS 2009, Palau Community College

Ngiramengior, Todd N.
Executive Assistant to the President
AS 1980, Wabash Valley College
BS 1983, Eastern Illinois University

Ngiraroruo, Ann Sabra
Secretary
CA 1982, Micronesian Occupational College
CA 2005, Palau Community College

Ngiratrang, Sebastian
Food Service Coordinator
CA 1982, Micronesian Occupational College

Ngirkelau, Teongel
Registration & Records Specialist
AS 2008, Palau Community College

Ngirkuteling, Tanya
Library Assistant
AAS 2010, Palau Community College

Ngirmeriil, Glendalynn N.
Counselor
BA 2005, University of Hawaii @ Manoa

Olegeriil, Jay G.
Vice President, Administration & Finance
BA 1989, Hawaii Pacific University
MA 2003, San Diego State University

Olengellel, Lakolani
Admissions Counselor
BA 2004, University of Hawaii – Hilo
MA 2011, San Diego State University

Olikong, Deikola
Accreditation Liaison Officer
BA 1989, Hawaii Pacific College

Olkeriil, Kristy
Accounting Technician
AS 2008, Palau Community College
AS 2010, Palau Community College

Olkeriil, Marlyne
Financial Aid Technician
AA 1982, Lassen Community College

Osima, Jalavenda P.
Secretary
AS 1999, Palau Community College

Ramarui, Robert
Dean, Academic Affairs
BBA 1997, University of Guam
MBA 2000, University of Guam

Rdechcor, Gaylord
Maintenance Technician
Diploma 1980, Mindszenty High School

Rechebei, Vernice
Director, Learning Resource Center
BA 1990, California State University
MA 2003, San Diego State University

Rechelluul, Leilanie
Extension Agent
BA 1997, University of Guam
MA 2011, San Diego State University

Recheungel, Winfred
Counselor
BA 1981, Chaminade University

Reklai, Hilda N.
Director, Student Life
BA 1991, University of Hawaii @ Hilo

Reksid, Maria Lourdes
Administrative Assistant
BS 1985, Knoxville College

Rimirsch, Bruce S.
Director, Computer & Data Processing
BA 1986, Asbury College

PROFESSIONAL & SUPPORTING STAFF

Saburo, Richard
Cook
Diploma 1978, Palau High School

Saiske, Dilmai
Academic Advisor/Counselor
BA 1983, University of Hawaii - Hilo

Salii, Uroi N.
Director of Finance
BS 2006, University of Denver
MBA 2001, National Taiwan University

Salvador, Grace
Library Assistant
AS 2005, Palau Community College

Samil, Dilubech
Administrative Assistant
Diploma 1983, Marianas High School

Sara, Ligaya T.
Institutional Research Analyst
BS 2004, University of Southeastern Philippines

Sato, James Norman
Student Activities Supervisor
GED 1992, Ministry of Education

Sebangiol, Murais
Heavy Equipment Operator & Maintenance Worker
Diploma 1988, Melekeok Elementary School

Silil, Mekreos
Financial Aid Counselor
BA 1991, University of Guam

Tadao, Keshina K.
Accounting Technician
AAS 2013, Palau Community College

Tadao, Tchuzie
Director, Development Office
BA 1995, University of Hawaii
MA 2003, San Diego State University

Takeo, Ezra
Food Service Supervisor
Diploma 1977, Marianas High School

Taro, Thomas
Vice President, Cooperative Research & Extension
BA 1982, United State International University
MA 2003, San Diego State University

Tebelak, Oliver U.
Cook
Diploma, 2010, Belau Modekngai School

Tellei, Dr. Patrick U.
President
AS 1980, Micronesian Occupational College
BEd. 1987, University of Hawaii at Manoa
MEd 1989, University of Hawaii at Manoa
EdD 2005, University of San Diego

Temaungil, Marianne
Associate Dean, Academic Affairs
BS 1975 State University of New York
MA 2003 San Diego State University

Teruzi, Maria L.
Field Assistant
Pre-GED
Ministry of Education

Thomas, Dalton R.
Extension Agent
AAS 2009, Palau Community College

Thompson, David M.
Director, Library Services
MA 2012, Indiana University

Tkel, Leona
Secretary
Diploma 1979, Mindszenty High School

Tmecherur, Wiles
Maintenance & Operation Supervisor
CA 1988, Micronesian Occupational College

Towai, Gibson
Supply/Bookstore Supervisor
AS 1997, Palau Community College

Udui, Akiko S.
Information Tech & Tracking Coordinator
AAS 2009, Palau Community College

PROFESSIONAL & SUPPORTING STAFF

Ueki, Omdasu T.
Director, Human Resources
BA 2001, University of Portland

Bingklang, Beronica
Office Clerk
Diploma 2007, Adulty High School

Ueki, Shelley R.
Counselor
BA 2006, Eastern Washington University

Blaluk, Leona
General Office Clerk
Diploma 2007, PCC Adult High School

Ulungchong, Husto
Data Services Technician
Diploma 1984
Palau High School

Dingelius, Dawkins
Maintenance Helper
Diploma 2004, PCC Adult High School

Vergara, Rogelio
Maintenance & Operation Supervisor
CA 1969, Pampanga, Philippines

Ebas, Amanda N.
Library Assistant
Diploma 2004, Palau High School

Wakakoro, Larry
Asst. Project Director, UBM&S
BS 1990, Southwestern Adventist University
MA 2008, San Diego State University

Esoailug, Albino
Maintenance Helper
AAS 2012, Palau Community College

Wally, William O.
Dean, Continuing Education
AS 1978, Lassen Community College
BA 1980, California State University at Chico
MA 2005, San Diego State University

Ford, Janyssa T.
Office Clerk
Diploma 2009, Palau High School

Fritz, Leory
Field Assistant
Ngaremlengui Elementary School

Wasisang, Flora
Secretary
AS 2005, Palau Community College

Joshua, Courtney T.
Senior Clerk Typist
AAS 2012, Palau Community College

Yalap, Grace
Maintenance Helper/Custodian
Diploma 1981, Palau High School

Kesolei, Joanny E.
Office Clerk
Diploma 1991, Palau High School

Limited Term Contract:

Abdulahim, Davut
Security Guard
Diploma 1998, Bortala High School
East Turkestan

Kloulubak, Raven S.
Library Assistant
Diploma 2009, Palau High School

Liu, Pei-Hsin
Instructor, Chinese Language
MA Science of Education, ROC-Taiwan

Bedana, Sheryl P.
Architect/Structural Designer
BS 2007, University of Mindanao

Madlutk, Rehabeam
Maintenance Worker
GED 2001, Ministry of Education

Banphis, Mary M.
Library Assistant
AAS 2013, Palau Community College

Michael, Siliang
Security Guard
Ngaremlengui Elementary School

Limited Term Contract

Morei, Elicita N.
Instructor, English
BA 1979, California State University

Skang, Rosendo
Landscaper
CA 1979, Micronesian Occupational College

Ngiraingas, Madelsar
Project Coordinator, PACC
MA 2007 University of California

Sowraenpiy, Miano
Navigator Crew
Diploma 2005, Outer Islands High School

Ngiramengior, Leonard
Maintenance Helper/HE Operator
Diploma 1976, Ngchesar Elementary School

Sumang, Hosea
Custodian/Landscaper/Security Guard
Diploma, MOC

Ngiramolau, Mason
Maintenance Helper
CA 2004, Palau Community College

Tasurmwai, John I.
Security Service Officer
Diploma, Palau Community College

Oiterong, Franson
Field Assistant
Diploma 1999, Koror Elementary School

Tellei, Tyler I.
Research Assistant
AAS 2011, Palau Community College

Okabe, Yoshi-Aki
Maintenance Helper
AAS 2008, Palau Community College

Tun, George Y.
Maintenance Helper/AC Assistant
Diploma, Yap High School

Ongrung, Evan T.
Computer Technician
AS 2009, Palau Community College

Ulengchong, Joleen
Library Assistant
Diploma 1992, Mindszenty High School

Remoket, Rusky
Field Assistant
Koror Elementary School

Umang, Gurney Lee
Cook
Diploma, 1985 Palau High School

Rengiil, Cherie Lynn
Office Assistant
Diploma 2009, Pennfoster High School

Watanabe, Renne E.
Secretary
AAS 2012, Palau Community College

Salapwa, David
Student Activities Specialist
AAS 2010, Palau Community College

Sengebaw, Felix
Extension Agent/Assistant
Diploma 1992, Mindszenty High School

Sewralur, Sesario
Master Canoe Navigator
Diploma 1992, Outer Islands High School

FACULTY

Andrew, Evangeline
Associate Professor, English
BA 1994, Brigham Young University
MA 2008, San Diego State University

Bells, Samantha T.
Criminal Justice Instructor
BA 2005, University of Hawaii at Hilo
MA 2008, San Diego State University

Buban, Margeline V.
Instructor, Math
BS 1984, Marikina Institute
MA 2004, Marikina Institute

Charles, Howard M.
Instructor, English/Music
BA 1978, Point Loma Nazarene College
MA 2008, San Diego State University

Darius, Loyola B.
Instructor, Social Science
BA 2003, University of Hawaii – Hilo
MA 2011, Kobe University

Enano, Nobby
Instructor, Auto Mechanics
BS 1992, University of Southeastern Philippines

Fritz, Ltlatk H.
Instructor, Tourism & Hospitality
BA 2011, University of Hawaii at Hilo

Gachalian, Alex M.
Associate Professor, Agriculture
BS 1978, Nueva Ecija University of Science & Technology
MA 1998, Tarlac College of Agriculture

Garcia, Soledad
Instructor, Home Economics
BS 1974, Central Luzon Polytechnic College

George, Nena H.
Instructional Assistant II
AAS 2010, Palau Community College

Hinojales, Suzette G.
Drafting & Math Instructor
BS 2008, University of Santo Tomas

Ignacio, Arlene
Instructor Business Accounting
BBA 1997, University of Guam
MA 2010, San Diego State University

Iyekar, Pasquana
Assistant Professor in Education
BA 2000 University of Guam
MA 2010, San Diego State University

Joseph, Maria
Associate Professor, Math
BA 1999, San Jose State University
MA 2011, San Diego State University

Kawamura, Reiko
Japanese Instructor
BS 2008, Azabu University

Kiep, Galindez
Instructional Assistant I
AAS 2010, Palau Community College

Kintol, Keiden
Associate Professor, Business
BBA 2003, University of Guam
MA 2011, San Diego State University

Lay, Laura M.
Associate Professor, Library Science
MA, 2010 University of Wisconsin

Ledgerwood, Danka
Associate Professor, Office Administration
BA 1986, University of Comenius
MA 1993 University of Comenius

Liu, Pei Hsin
Instructor, Chinese Language (Volunteer, ROC)
MA, Science of Education , ROC-Taiwan

FACULTY

Mersai, Midori
Associate Professor, English
BA 1977, University of Hawaii – Hilo
MA 2008, San Diego State University

Meyar, Renetta
Associate Professor
BA 2008, San Diego State University
MA 2011, San Diego State University

Mitchell, William T.
Communication/English Instructor
BS 1979, Florida A&M University
MA 1991, Webster University

Moses, Epimachus
Associate Professor, Math
BS 1992, Oregon State University
MS 2002, Western Illinois University

Ngirmang, Tarmau T.
Nursing Instructor
AA 1983, El Camino College

Ngirmeril, Gamberlyn S.
Assistant Professor, Science
BA 1992, Park College
MA 2008, San Diego State University

Nobuo, Allins
Health & Physical Instructor
BS 1993, Walla Walla University

Ongalibang, Ala-Lofty
Instructor Assistant II
AAS 2010, Palau Community College

Polloi, Volette Souang
Instructional Assistant
BA 2003, University of Hawaii at Hilo

Rejano, Medardo J.
Instructor, AC & Refrigeration
BS 1993, Sorsogon State University

Rekemsik, Lester
Instructor Carpentry
CA 1988, Chuo Ko-Gakko, Japan
BA 1992, San Diego State University

Santos, Rogelio G.
Instructor, Welding/Auto Body
BS 1980, Pangasinan State University
MS 1987, Marikina Institute of Sci. & Tech

Taroy, Jerry O.
Instructor, Electrical Technology
BS 1992, Marikina Institute of Science & Technology

Tennyson, Cason
Instructor, Education
MA, 1985 North Gerogia College & University

Tellei, Frutoso
Electrical Instructor
AS 2004, Palau Community College
BA 2012, San Diego State University

Yabes, Joel G.
Assistant Professor, General Electronics Technology
BA 1983 and MA 1990, Marikina Institute of Science and Technology at Philippines

Yaoch, Johvanna
Associate Professor, Information Technology
BS 2004, Eastern Oregon University
MS 2011, California State University

Consultant to PCC

Maui, Victoria
Instructor
BS 1974, Philadelphia College of Bible
MEd 1979, Northern Arizona University

Ngirngebedangel, Joshua
Instructor, Small Engine & Outboard Motor
CA 1977, Micronesia Occupational Center

Ngiruchelbad, Johana
Instructor, Communicable Disease
BSN & RN, University of Guam