

FREE!!!



Palau Community College

MESEKIU'S NEWS



Friday, April 12, 2013

Weekly Newsletter

Volume 15, Issue 15

College Observes Charter Day



Warm-Up exercises led by PCC Mesekiu Team.

The college observed this year's annual Charter Day on Friday, April 05, 2013

with the President's Run & Walk and light refreshments. President Tellei addressed

Charter Day cont'd on p.2

Recreation Awards Medals

Contributed by Hamilton Maech



Billiard Mix Double winners.

Every semester the Recreation Office conducts intramural tournaments in Billiards and Table Tennis to currently-enrolled stu-

dents. On behalf of all students and Recreation staff, recognition is duly given to Sam

Awards cont'd on p.3

Bilung Donates in Memory of Younger Sister

Bilung Gloria G. Salii donated \$250 to the PCC Endowment Fund in Memory of her younger sister, Ms. Techekii Sinobu Memorita Diliaur Merep.

Thank You!

PCC Presidential Directive 013-001

President Tellei early this month issued PCC Presidential Directive 013-001 banning all types of card games anywhere on the entire college grounds, including PCC-owned buildings and facilities outside of Koror State. This decision aims to stop illegal gambling using money among students.

Any student, and faculty and staff in violation of this directive will be subject to sanctions as stipulated in the current PCC General School Catalog, the Student Handbook, and the PCC Personnel Rules and Regulations Manual.

Palau Community College is an accessible public educational institution helping to meet the technical, academic, cultural, social, and economic needs of the students and communities by promoting learning opportunities and developing personal excellence.

Charter Day cont'd from p.1

the audience with a brief explanation of the visioned commitment of Palauans in the quest for nation-building. This aspiration marked the beginnings of a small school that evolved over the years to become Mi-

cronesian Occupational College to what it is today, a community college that serves the Republic of Palau and the surrounding Micronesia region. ALO Deikola Olikong and Dean Sherman Daniel, respectively assured

the audience that PCC has been accredited for 35 years; and that it stands ready to provide academic and student support services to develop and maximize student learning experiences for career goals.



BITS AND PIECES...

TOEFL Test Date

TOEFL TEST
MAY 04, 2013
SATURDAY

For more information, contact the
Ministry of Education 488-2952

Tan Siu Lin PCC Library

Hours of Operation

Monday to Thursday: 8am - 8pm
Friday: 8am - 5pm
Saturday: 9am - 6pm
Sunday: CLOSED
Call 488-3540 for information

Calendar of Events

May 05 (S) Senior Citizens
Day (Holiday)
Observed May 06 (M)
May 10 (F) Last Day
of Instruction

CE Instructors Wanted

Instructors Wanted
Summer Kids Program Classes

Applications at CE Office

Deadline to Submit Applications
May 16, 2013

News/Stories Wanted

MESEKIU'S NEWS welcomes stories/
articles/announcements from students,
faculty, and staff. Submission deadline
is Tuesday at 4:30 p.m. in hard and/or
electronic copies to dilubchs@palau.edu
and alvinam@palau.edu.

MOC/PCC Alumni articles are welcome.

Please call 488-2470/2471 X 251, 252,
& 253 for more information.

Awards cont'd from p.1



Billiards Female Single winners.



Table Tennis Male Single winners.



Billiards Male Single winners.



Table Tennis Mix Double winners.

Saunders and George Nena for volunteering
as referee officials in these tournaments as
well as the awarding ceremony. Thank you

Billiards - Male Single

| | |
|-----------------|-----------|
| McMichael Mutok | 1st Place |
| Kampis Katawan | 2nd Place |
| Abram Shirai | 3rd Place |

Billiards - Female Single

| | |
|-------------------|-----------|
| Jennifer Mongkeya | 1st Place |
| Lisa Sulog | 2nd Place |
| Berica Laamow | 3rd Place |

Billiards Mix Double

| | |
|-------------------|-----------|
| Marvin Waguk | 1st Place |
| Jennifer Mongkeya | |
| Paulus Tamannalon | 2nd Place |
| Lisa Sulog | |
| Joseph Mangarfir | 3rd Place |
| Berica Laamow | |

Table Tennis - Male Single

| | |
|----------------------|-----------|
| Marvin Waguk | 1st Place |
| Joseph Manarfir | 2nd Place |
| Christopher Fillimew | 3rd Place |

Table Tennis - Female Single

| | |
|-------------------|-----------|
| Jennifer Mongkeya | 1st Place |
| Berica Laamow | 2nd Place |
| Reng Sbal | 3rd Place |

Table Tennis Mix Double

| | |
|----------------------|-----------|
| Marvin Waguk | 1st Place |
| Jennifer Mongkeya | |
| Christopher Fillimew | 2nd Place |
| Lisa Sulog | |
| Joseph Mangarfir | 3rd Place |
| Berica Laamow | |

ALUMNI NOTES

Class of 2005

Kaleb Meltel

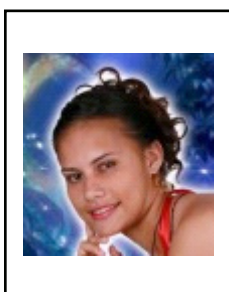


Earned an Associate of Science in Office Administration. He is a Geographic Information System (GIS) Technician for Koror State Government.

Message: Finish college as it will help one obtain good working ethics.

Class of 2012

Danielle K. Iyekar



Earned an Associate of Applied Science in Office Administration. She is a Secretary for Mariano Carlos Law Firm for the past nine months.

Message: School is the key to success.

Class of 2012

Lieb Bells



Earned an Associate of Arts in Liberal Arts. He is an Administrative Specialist I in the Communicable Diseases Unit in the Bureau of Public Health.

Message: PCC paves the way to college life and enables one to know what to expect in planning for further education abroad.

Alumni Notes

Showcases MOC & PCC alumni who are positive role models and contribute to the quality of life in their local communities.

If you are that alumnus/alumna or know someone who is, please contact the PCC Development Office at telephone numbers 488-2470/2471 x 251, 252, and 253.

We would like to feature you in future *Mesekiu's News* issues.
PCC website: www.palau.edu



Mesekiu's News
Palau Community College
P.O. Box 9, Koror, Palau 96940

2013 Summer Kids Program

Classes for Elementary Students

- Math 3rd - 8th
- English Reading 3rd - 8th
- English Writing 3rd - 8th
- Palauan Orthography 3rd - 8th
- Marine Science 5th & 6th
- Keyboarding 7th & 8th

Each Class - 20 max no. of students
Keyboarding - 15 max no of students

**All Classes to Begin on
June 03 - June 28, 2013.**

**Registration is NOW Open
until May 30, 2013.**

**Contact PCC-CE Office
488-6223 for more information**

Vacancy Announcement

- (1) *Federal Work-Study Coordinator, Office of Admissions & Financial Aid*
Salary range: \$12,049 - \$20,607 per annum
- (2) *English Instructor, Learning Resource Center*
Salary range: \$14,802 - \$24,647 per annum
- (3) *Air Conditioning & Refrigeration Instructor Academic Affairs*
Salary range: \$16,010 - \$21,191 per annum
- (4) *Math Instructor, Learning Resource Center*
Salary range: \$14,802 - \$24,647 per annum
- (5) *Librarian, Tan Siu Lin PCC Library*
Salary range: \$16,010 - \$24,647 per annum

For application forms and information, please contact Harline Haruo at PCC Human Resources Office at 488-2470/71, ext. 227.

Email hr@palau.edu or download form at www.palau.edu

Celebrating Birthdays

| | |
|--------------------|--------|
| Johnston Kloulubak | Apr 16 |
| Flora Wasasang | Apr 16 |
| Yoshi Aki Okabe | Apr 19 |
| Rodney Kazuma | Apr 22 |

Happy Birthday to You!

PCC 50th Commencement Exercises

May 24, 2013
Friday

Book Returns Spring 2013

Return Your Rented
Books before or on
Friday, May 17, 2013.

See Alvina @ Dev. Office

PCC ENDOWMENT FUND

Invest in the future of
Our Students, Our College, and
Our Nation
To support, contact us today!

P.O. BOX 9 Koror, PW 96940

Phone: (680) 488-2470/2471 ext. 251/253

Email: tellei@palau.edu

PALAU BEACH BUNGALOWS

Peace & Relaxation Palauan Style!

Only \$40+tax daily rate
Private a/c bedroom&bath, living room, kitchenette
Beachside on big island of Babeldaob
Melekeok State
30 minutes from Palau International Airport
RESERVATIONS: 680.587.2533
Swim, snorkel, jungle walks, cultural sites
palaubeachbungalows@palaunet.com
www.palauparadise.com