

FREE!!!



Palau Community College

MESEKIU'S NEWS



Friday, September 27, 2013

Weekly Newsletter

Volume 15, Issue 39

2013-2014 Student Election Results



Student Trustee
Dizzette U. Dolmers



ASPCC President
Kornelia I. Thomas



President-Elect
Benigno S. Sablan



Secretary
Latricia B. Skiwo



Sophomore Rep.
Ucheliou A. Filibert



Sophomore Rep.
Luigi R. Ueki



Treasurer
Ciara E. Haruo



Freshman Rep.
Ivy J. Patris



Freshman Rep.
Ewing Rudimch

Palau Community College (PCC) held its annual student election last Wednesday, September 18, 2013. Of the 644 registered students, a total of 238 students (198 freshmen and 40 sophomores) exercised their voting right. The student election included representatives for the student island nation organizations as well as the officers of ASPCC. PCC would like to congratulate the newly elected officers and wishes them the best of luck as they assume their new roles in the 2013-2014 school year student affairs! STUDENT ELECTION RESULTS, CONTINUED ON PAGE 3

The 5th European Union-Palau Film Festival Begins



Minister Temengil-Chilton giving her remarks.

On Wednesday, September 25, 2013, the opening ceremony for the 5th European Union-Palau Film Festival was held at the Palau Community College (PCC) Assembly Hall. In attendance were Ibedul Yukata Gibbons, Minister of State Billy G. Kuartei, Ambassador Kazuhiro Tajiri of Japan, Honorary Consul Thomas Schubert of Germany, Honorary Consul Mandy Etpison of France, Honorary Consul Shallum Etpison of Spain, First Secretary Randy Wang of the Republic of China Embassy, Honorary Consul Marcello Pierantozzi of Italy, and PCC President Dr. Patrick U. Tellei. Special remarks were given by Minister of Community & Cultural Affairs Baklai Temengil-Chilton. She welcomed everyone to the film festival and explained that the event was a part of Palau's 19th Independence Day activities.

FILM, CONTINUED ON PAGE 2

Palau Community College is an accessible public educational institution helping to meet the technical, academic, cultural, social, and economic needs of students and communities by promoting learning opportunities and developing personal excellence.

19th Law Enforcement Academy Graduation



Swearing-In of the Law Enforcement Academy cadets.

On Friday, September 20, 2013 the 19th Law Enforcement Academy held a graduation at the Palau Community College (PCC) Cafeteria. In attendance to commemorate the graduates were President of the Republic of Palau Tommy E. Remengesau Jr., Vice President of Palau and Minister of Justice Honorable Antonio Bells, Ibedul Yukata Gibbons, Reklai Rafael B. Ngirmang, and Senate President Camsek E. Chin along with other government officials. LAW, CONTINUED ON PAGE 3

Guardrail and Sign Maintenance Training

contributed by Don Hanser



Participants of MAP repairing a guardrail.

Employees from the Republic of Palau Bureau of Public Works and the Koror State Department of Public Works recently completed training courses in guardrail maintenance and road sign maintenance. Guardrails are meant to protect passengers and their vehicles in curves and on steep drop-offs along roads and highways. But if they are not properly maintained, they can be a cause of injury. Regular and systematic inspection and maintenance of guardrails are important, and this was the topic of two days of training in a recent MAP course delivered by Lester Rekemesik. MAP, CONTINUED ON PAGE 4

New Students Tour Island

contributed by PCC Dorm Staff



New dorm students at Ngerulmud.

On Sunday, September 15, 2013, twenty-nine (29) new students residing in the dormitories toured the big island (Babeldaob) to help orient them with the cultures and traditions of their new environment. The first stop was in Melekeok State where the students toured the national capital and Bailechesau, the state's capital building. The next stop was Oketol Dock in Ngerchelongs State where they enjoyed refreshments along with an abundance of local legends and history from Dorm Manager Ephraim Ngirachitei. Last month, the students toured the Palau International Coral Reef Center (PICRC). The students and the dormitory staff would like to thank Dr. Golbuu for allowing the students to tour PICRC free of charge. They would also like to thank Nena George of Academic Affairs as well as Sherry, Lamar, and Cassaleah of the PCC Cafeteria for their assistance.

Film

CONTINUED FROM PAGE 1

She thanked Consul Schubert and the European Union for supporting the Republic of Palau. Consul Schubert thanked everyone for their participation and explained that through efforts from the seven European Union Embassies in the Philippines (Czech Republic, Austria, Germany, France, Spain, Italy, and Switzerland) the movies were carefully selected to be shown at the film festival.

The film festival aims to expose the local community, especially young people, to the cultures and traditions of European countries. The 5th Film Festival will continue until Saturday, September 28, 2013 with showing times of 6PM and 8PM. Consul Schubert acknowledged the support of everyone, especially the national government through the Ministry of Community & Cultural Affairs. He also thanked PCC for hosting the event.

BITS AND PIECES...

Tan Siu Lin PCC Library

Hours of Operation

Monday to Friday 7:30AM to 7PM

Saturday 9AM to 6PM

Sunday CLOSED

For more information call
488-3540.

PARENTS MAGAZINE



"Parents Magazine publishes articles about parenting. It provides advice on various parenting topics such as planning for birthday parties and constructive means for raising children."

Academic Calendar: Fall 2013

October 01 (T)

Holiday: Independence Day!

October 02-04 (T-F)

Mid-Term Period

October 18 (F)

Last Day for All Withdrawals

October 24 (TH)

Holiday: United Nations Day

October 24-25 (TH-F)

Pre-Registration for Spring 2014

News/Stories Wanted

MESEKIU'S NEWS welcomes stories/articles/announcements from students, faculty, and staff. Submission deadline is Tuesday at 4:30 p.m. in hard and/or electronic copies to dilubchs@palau.edu and tchuziet@gmail.com.

Articles from MOC/PCC Alumni are also welcomed.

Please call 488-2470/2471 (extensions 251, 252, or 253) for more information.

Student Election Results CONTINUED FROM PAGE 1

Palau Student Organization

President: Antoni Soalablai
Vice President: Ayela Filibert
Secretary: Elbuchel T. Echang
Treasurer: Watson N. Winner

Yap Student Organization

President: Lisa T. Sulog
Vice President: Percy Retogral
Secretary: George Yanruw Tun
Treasurer: Jerwina Figirmad

Chuuk Student Organization

President: Abram Shirai
Vice President: Jake Smith
Secretary: Janet Rolly
Treasurer: Emma Nero

Pohnpei Student Organization

President: Tommy L. Obed
Vice President: Wesley Alik
Secretary: Benardina Araising
Treasurer: El - Jane Silbanuz

Marshall Islands Student Organization

President: Ronnie Thomas
Vice President: Henson Lalimo
Secretary: Pauline Kobeney
Treasurer: Laninbwij Luke Langmos

Kosrae Student Organization

President: Nena Tilfas
Vice President: Julinson Alik
Secretary: Michael Jackson
Treasurer: Melinda Nena

Law CONTINUED FROM PAGE 2

Thirty-two (32) cadets graduated from the law enforcement academy. The graduates, except for one, work for different law enforcement agencies in Palau including the Division of Customs, the Division of Marine Law Enforcement, and state conservation offices. Training was conducted by Commander Favian Ngriramengior and Deputy Commanders Sabino Kyota Jr., Sherry Sisior, and Clive Telei. Training began on June 17, 2013 and concluded on September 20, 2013.

FACULTY SENATE ASSOCIATION (FSA) SCHOLARSHIPS NOW AVAILABLE AT PCC DEVELOPMENT OFFICE!

The Faculty Senate Association (FSA) is awarding two types of scholarships this year: a scholarship for freshman/first-year students and a scholarship for sophomore/second-year students. Two students from each year will be selected as the recipients of the scholarships. Visit PCC Development Office for more information or contact the Development Office at 488-2470/2471, extensions 252 or 253.

DEADLINE: OCTOBER 11, 2013

SUPPORT THE PALAU COMMUNITY COLLEGE THANKSGIVING ENDOWMENT FUNDRAISING!

Support PCC by purchasing Tickets for the Annual Thanksgiving Endowment Fundraiser for Chances to WIN FABULOUS PRIZES!

NOVEMBER 27, 2013 (WEDNESDAY)

****donations are tax deductible****

Contact the PCC Development Office for more information:

488-2470/2471 ext. 251, 252, or 253.

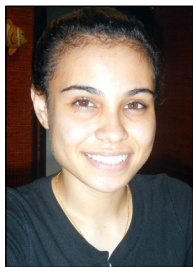
ALUMNI NOTES

LAUREN R. CARLTON

(Class of 2013)

ASSOCIATE OF APPLIED SCIENCE - OFFICE ADMINISTRATION

"Don't be afraid to fail in anything you do! Otherwise, keep persevering for the things you believe in."



Ms. Carlton graduated from PCC in 2013 with an AAS Degree in Office Administration. She currently works as a Receptionist for the Front Desk of Cliffside Hotel.

SETH TECHITONG

(Class of 2013)

ASSOCIATE OF APPLIED SCIENCE - CONSTRUCTION TECHNOLOGY

"School is a foundation for a better future. It doesn't matter how many mistakes you've made: you can correct failures and obtain success! Stay in school and say no to drugs."



Seth graduated in 2013 with an AAS Degree in Construction Technology. He now works at the Building & Zoning Section of the Koror State Government.

TARA ISIDA MAIDESIL

(Class of 2013)

ASSOCIATE OF SCIENCE - BUSINESS ADMINISTRATION

"Educating the mind without educating the heart is no education at all. If it is truly your passion then there is a way!"



Tara graduated in May 2013 from PCC with an AS Degree in Business Administration. Currently, she works as an Office Assistant for the Koror State Government.



Mesekiu's News

Palau Community College

P.O. Box 9 Koror, Palau 96940

ALUMNI NOTES showcases MOC & PCC alumni who are positive role models and contribute to the quality of life in their local communities.

If you are that alumnus/alumna or know someone who is, please contact the PCC Development Office at telephone numbers 488-2470/2471 (extensions 251, 252, or 253).

We would like to feature you in future *Mesekiu's News* issues.

MAP CONTINUED FROM PAGE 2

In addition to lecture and discussion, participants spent time out along roads in Koror and Airai doing guardrail inventory and assessment, as well as maintenance and repair work. The training is meant to help these public service providers keep our roadways safe for all motorists and passengers.

An additional two days was spent learning about and performing road sign and sign post inventory, assessment, and repair. If road signs are not clearly seen and in good condition, they cannot serve their purpose of guiding and protecting motorists and pedestrians. All the participants became better informed and more experienced in these activities during these two days of specialized training.

MAP stands for Maintenance Assistance Program and is tasked with the development and delivery of infrastructure-related training for utility, state, and national government employees. It is funded by a grant from the United States Department of Interior.

Celebrating Birthdays

Annalisa Ngiraklei
Jade Kloulchad



October 01
October 02

HAPPY BIRTHDAY!

Vacancy Announcement

- (1) *English Instructor*
(Learning Resource Center)
Salary range: \$14,802 - \$24,647 per annum
- (2) *Adjunct Instructors*
(Academic Affairs Office)
Salary range: determined by class credits, educational level, and experience.
- (3) *Dean of Academic Affairs*
(Academic Affairs Office)
Salary range: \$21,911 - \$33,730 per annum
- (4) *Twenty (20) Part-Time Tutors*
(Educational Talent Search Office)
Salary range: \$400 - \$1,200 per annum
- (5) *Federal Work-study Coordinator*
(Office of Admissions & Financial Aid)
Salary range: \$12,049 - \$20,607 per annum

For application forms and information, please contact **Harline Haruo** at **PCC Human Resources Office** at 488-2470/2471, extension 227.

E-mail hr@palau.edu or download forms at <http://pcc.palau.edu>

PCC is an Equal Opportunity Employer

Endowment Fund

INVEST IN THE FUTURE OF OUR STUDENTS, OUR COLLEGE, AND OUR NATION

To SUPPORT, CONTACT US TODAY!

P.O. BOX 9 Koror, Palau 96940

Phone: 488-2470/2471 (extensions 251/253)

e-mail: tellei@palau.edu

If you want to join the Biweekly Allotment Program, **contact us NOW!**

FIND PCC ONLINE FOR MORE INFORMATION



pcc.palau.edu



Palau Community College - PCC

Stamp Here