

FREE!!!



Palau Community College

MESEKIU'S NEWS



Friday, November 01, 2013

Weekly Newsletter

Volume 15, Issue 44

Palau Community College Installs Voltaic Training Equipment

contributed by Don Hanser



(left to right): Instructor Jerry O. Taroy, PCC President Dr. Patrick U. Tellei, Energy Specialist William Thorp, and Civil Engineer João P. C. Guimarães.

On Wednesday, October 16, 2013, Palau Community College (PCC) was visited by Energy Specialist William Thorp and Civil Engineer João P. C. Guimarães. Mr. Thorp is the Energy Specialist in Palau for the North Pacific ACP Renewable Energy and Efficiency Project (North-REP), a project that assists Pacific islands form reliable and accessible energy sources. He orchestrated the European Union (EU) funded solar panel training that was offered at the college.

Several PCC instructors, staff, and students recently completed the installation of a 1.7 KW solar array on the roof of the PCC Tekrar Building. This project was carried out in preparation for the offering of a "PV System Design and Installation" course. This course will be integrated into the regular Electrical Technology (ET) Program, and will be a requirement for all ET students.

The installation was led by three instructors who recently participated in the "Grid-Connected PV System Design and Installation" course: Joel Yabes, Jerry Taroy, and Toto Tellei. They were assisted by Air-Conditioning (AC) Instructor Ding Rejano, Maintenance Department Electrician Yoshi Okabe, and AC students George Tun and Randy Alexander. SOLAR PANELS, CONTINUED ON PAGE 3

Upward Bound Orientation

The Upward Bound Program held an orientation on Monday, October 14, 2013. Present at the orientation were students from the different high schools in Palau including Mindszenty High School, Emmaus High School, Palau High School, and Palau Mission Academy. During the orientation, staff members of Upward Bound introduced the students to the educational benefits provided by the program. They explained the different subject focus options (i.e., mathematics and science), and the benefits of each focus.

The Upward Bound Program is a federal TRIO Programs supported by the United States Department of Education.

UPWARD BOUND, CONTINUED ON PAGE 4



High school students attending the Upward Bound Orientation at the PCC Assembly Hall.

Palau Community College is an accessible public educational institution helping to meet the technical, academic, cultural, social, and economic needs of students and communities by promoting learning opportunities and developing personal excellence.

Retired Instructor Gives Lecture at PCC

contributed by Ala-Lofty C. Ongalibang



Retired Instructor Eugene Uehara giving a lecture.

Retired Auto-Mechanics Instructor Eugene Uehara returned to Palau Community College (PCC) to give a heart of service lecture to the students of the Auto-Mechanics Program. Mr. Uehara gave a lecture on engine operating principles and engine classifications, expounding detail on the subject of valve clearance adjustment. **RETIRED INSTRUCTOR, CONTINUED ON PAGE 4**

PCC Clubs Participate in OBF Celebrations

Various groups from Palau Community College (PCC) participated in the Olchotel Belau Fair celebrations last week. On Wednesday, October 23, 2013, the Palau Tourism & Hospitality School of Excellence (PTHSE) faculty and Tourism Club members provided assistance for the Palau Conservation Society's (PCS) 8th Annual Fundraising Gala by setting up the venue at the Ngarachamayong Cultural Center. The Tourism Club members served over 600 guests that evening.

Other PCC student clubs, such as the Federated States of Micronesia (FSM) student club, opened booths during the OBF Day celebration on Thursday, October 24, 2013. Students sold goods to the public at these booths as a means of raising funds for their clubs. The funds will be used to sponsor club activities for students.



Tourism Club members with Associate Professor Victoria Maui.

Endowment Fund Contributors

Palau Community College (PCC) would like to thank the following businesses, offices, and individuals for contributing to the PCC Endowment Fund:

Gibbons Enterprises



PCC Student Ahlai Kyota (center, right) receiving donations for "One (1) Large Pizza with Two (2) Ice Teas at the Rock Island Cafe" and "Two-Hour Free Internet at Cyber Cafe" from Gibbons Enterprises.

Scientology Volunteers



CE Employee Ann (center) receiving a donation from Scientology Volunteers Matthew Andrews (left) and Damien N. Caddell (right).

Thank you all for contributing to the Palau Community College Endowment Fund!



Federated States of Micronesia (FSM) students during OBF.

BITS AND PIECES...

Tan Siu Lin PCC Library

Hours of Operation

Monday to Friday 7:30AM to 7PM

Saturday 9AM to 6PM

Sunday CLOSED

For more information call
488-3540.

VANITY FAIR MAGAZINE



"VANITY FAIR is a magazine of popular culture, fashion, and current affairs published by Condé Nast. The present Vanity Fair has been published since 1983 and there have been editions for four European countries as well as the U.S. edition."

Academic Calendar: Fall 2013

November 27 (W)

PCC Endowment
Thanksgiving Fundraiser

November 28 (TH)

Holiday:
Thanksgiving Day!

November 28-29 (TH-F)

Students' Thanksgiving Break

November 29 (F)

Last Day of Instruction

News/Stories Wanted

MESEKIU'S NEWS welcomes stories/articles/announcements from students, faculty, and staff. Submission deadline is Tuesday at 4:30 p.m. in hard and/or electronic copies to dilubch@gmail.com and tchuziet@gmail.com.

Articles from MOC/PCC Alumni are also welcomed.

Please call 488-2470/2471 (extensions 251, 252, or 253) for more information.

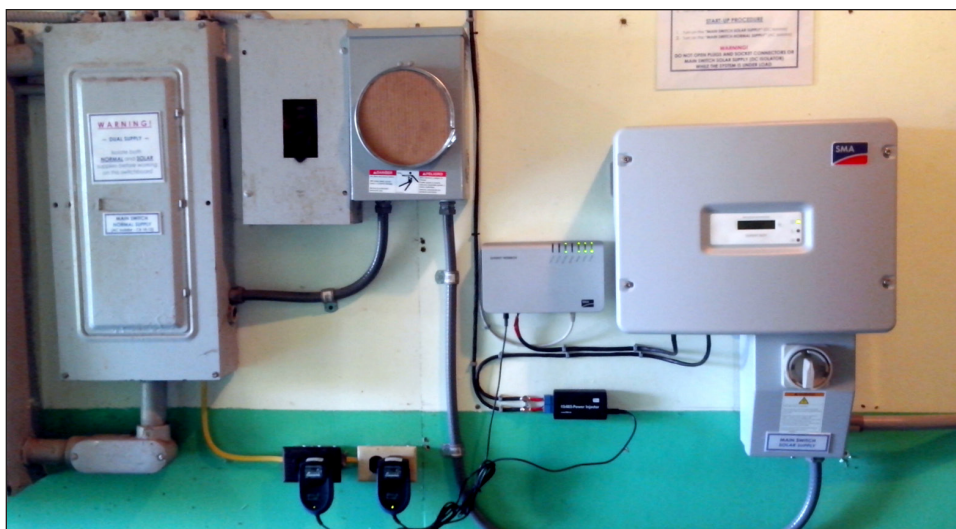
Solar Panels CONTINUED FROM PAGE 1

SPC North-REP, the sponsor of the original solar training, donated the necessary installation equipment to PCC.

PCC would like to give a special thanks and recognition to SPC North-REP Palau for initiating the solar panel project as well as making it possible for the college to offer a new course about PV system installation. We are pleased that the college is able to offer this technology to our students at a time when photo voltaic systems are becoming a regular feature of homes, buildings, and other facilities in Palau.



The 1.7 KW Solar Array on the roof of the PCC Tekrar Building.



The Solar Array Control & Monitoring Equipment installed inside the Tekrar Building.

SUPPORT THE PALAU COMMUNITY COLLEGE THANKSGIVING ENDOWMENT FUNDRAISING!

Support PCC by purchasing Tickets for the Annual Thanksgiving Endowment Fundraiser for Chances to WIN FABULOUS PRIZES!
donations are tax deductible

NOVEMBER 27, 2013 (WEDNESDAY)

Contact the PCC Development Office for more information:

488-2470/2471 ext. 251, 252, or 253.

ALUMNI NOTES

CANDIDA SIKYANG

(Class of 2013)
ASSOCIATE OF ARTS - LIBERAL ARTS

"Live life to the fullest and never give up!"



Candida graduated with an AA Degree in Liberal Arts. She plans to continue her education by studying Computer Science at the University of Guam.

ESTHER RENGULBAI

(Class of 2005)
CERTIFICATE OF COMPLETION - RELATED SERVICE ASSISTANT

"It doesn't matter how old you are but how willing you are to pursue your education."



Esther received her Certificate of Completion as a Related Service Assistant (RSA) in 2005. For years she has been teaching at Ngchesar Elementary School. In 2011, she completed her San Diego State University (SDSU) Bachelor's Program.

CAYSHA T. MELTEL

(Class of 2013)
ASSOCIATE OF APPLIED SCIENCE - OFFICE ADMINISTRATION

"Live Life: stay strong, be strong, and go forward!"



Caysha graduated in 2013 with an AAS Degree in Office Administration. She plans to continue her education as a Business Major at the University of Guam.



Mesekiu's News

Palau Community College
P.O. Box 9 Koror, Palau 96940

ALUMNI NOTES showcases MOC & PCC alumni who are positive role models and contribute to the quality of life in their local communities.

If you are that alumnus/alumna or know someone who is, please contact the PCC Development Office at telephone numbers 488-2470/2471 (extensions 251, 252, or 253).

We would like to feature you in future *Mesekiu's News* issues.

Retired Instructor CONTINUED FROM PAGE 2

He had expressed a desire to contribute to the learning experience of the present-day PCC students. Thus, he volunteered as a guest speaker and gave a lecture on October 16, 2013, on the subject of engine operating principles in that correlates AM-112: Engine Servicing I course.

Upward Bound CONTINUED FROM PAGE 1

Aimed at students from low-income families and students with parents who had not attended four years of college, the Upward Bound Program provides educational assistance, such as tutoring and counseling. Through such assistance, the Upward Bound Program hopes to increase the rate at which their participants complete secondary education and enroll in post-secondary education. The program provides a stipend that may financially assist participants who want to further their educational pursuits.

Rotary Club of Palau DAVID WILLIAMS MEMORIAL SCHOLARSHIP

Applications available at the
PCC Development Office!

Deadline: November 15, 2013

Celebrating Birthdays

Joel Yabes	November 02
Irving Dwight	November 07
Reiko Kawamura	November 07
Dr. Patrick U. Tellei	November 07
Nobby H. Enano	November 08
Maureen Rengul	November 08

HAPPY BIRTHDAY!

Vacancy Announcement

- (1) *English Instructor*
(Learning Resource Center)
Salary range: \$14,802 - \$24,647 per annum
- (2) *Adjunct Instructors*
(Academic Affairs Office)
Salary range: determined by class credits, educational level, and experience.
- (3) *Dean of Academic Affairs*
(Academic Affairs Office)
Salary range: \$21,911 - \$33,730 per annum

For application forms and information, please contact Harline Haruo at **PCC Human Resources Office** at 488-2470/2471, extension 227.

E-mail hr@palau.edu or download forms at
<http://pcc.palau.edu>

PCC is an Equal Opportunity Employer

Endowment Fund

INVEST IN THE FUTURE OF OUR STUDENTS, OUR
COLLEGE, AND OUR NATION

To SUPPORT, CONTACT US TODAY!

P.O. BOX 9 Koror, Palau 96940

Phone: 488-2470/2471 (extensions 251/253)

e-mail: tellei@palau.edu

If you want to join the Biweekly Allotment

Program, contact us NOW!

FIND PCC ONLINE FOR MORE INFORMATION



pcc.palau.edu



Palau Community College - PCC

Stamp Here