

FREE!!!



Palau Community College MESEKIU'S NEWS



Friday, January 03, 2014

Weekly Newsletter

Volume 16, Issue 01

Palau Community College Endowment Fund Luncheon



End-of-the-Year Endowment Luncheon Raffle Grand Prize Winner Sharon Bultedaob (forth from the left) with PCC President Dr. Patrick U. Tellei and officers of ASPCC.

On Friday, December 27, 2013 Palau Community College (PCC) held its End-of-the-Year Endowment Fund Luncheon at the PCC Mesekiu Bai. Bi-weekly donors of the PCC Endowment Fund were invited to the luncheon as a thank-you token from the college for their continuous support. The luncheon also featured a raffle drawing with prizes ranging from coolers full of fish, two airline ticket vouchers, and a grand prize of \$500 cash.

The PCC Endowment Fund is a critical component of the PCC 15-Year Institutional Master Plan 2010-2024 with an ultimate goal of \$30 million, at which time the interest may be used to fund college programs and services. As of December 27, 2013, the Endowment Fund has reached a total of about \$3.6 million. This was made possible in part due to the generous bi-weekly contributions of over 900 Endowment Fund donors which garnered \$56,089 and the Thanksgiving Fundraising Event which raised \$24,580 totaling \$80,669 for the year 2013.

If you are interested in becoming a contributor to the PCC Endowment Fund, please contact the PCC Development Office: 488-2470/2471 extensions 251 or 253. ENDOWMENT, CONTINUED ON PAGE 2

Campus Year-End Face Lifts

Palau Community College (PCC) underwent clean and repair sessions the weeks after the last day of instruction. On December, 10, 2013 a group of students swept and mopped the computer rooms on campus. PCC would like to thank the students for their assistance!



Student volunteers

In addition, the sidewalk along the Continuing Education (CE), Financial Aid, Bookstore, Student Life, and Upward Bound offices was expanded. PCC would like to thank the maintenance workers for improving the school's walkways!



Workers expanding the sidewalk.

Palau Community College is an accessible public educational institution helping to meet the technical, academic, cultural, social, and economic needs of students and communities by promoting learning opportunities and developing personal excellence.

LIST OF WINNERS & PRIZES

Sharon Bultedaob - \$500 Cash Prize
Hilda N. Reklai - Bush Cutter & PCC Planner
Crystal Meltel - Overnight Fishing trip & Kerosene Lamp
Petra Glenn - Samsung LED TV & PCC Planner
William E. - Chainsaw & PCC Planner
Terry Ngirmang - Delta Airline Travel Voucher, Kerosene Lamp & PCC Planner
Leory Fritz - Delta Travel Voucher, Wine & PCC Planner
Lady Ngiratkl - Generator Gasoline & PCC Planner
Norma Etibek - Cliffside Hotel Gift Certificate (One Night Stay)
Lorraine Tellei - Microwave Oven & PCC Planner
Delina Remengesau - Wheelbarrow, Skobang & PCC Planner
Norma Etibek - Deep Fryer & PCC Planner
Juanita M. - First Aid Kit & \$100 Gift Card
Derbei Meyar - First Aid Kit & \$100 Gift Card
Clement Kazuma - First Aid Kit & \$100 Gift Card
Grace Yalap - First Aid Kit & \$100 Gift Card
Doris S. - First Aid Kit & \$100 Gift Card
Joene Rafael - Tiuladokou Bench, Cooler of Fish & PCC Planner
Katsumi Ngirchokebai - Tiuladokou Bench, Cooler of Fish & PCC Planner
Stargell Mamis - Tiuladokou Bench, Taro Bundle & PCC Planner
Sadako Tadao - Tiuladokou Stool, Power Surge & PCC Planner
Sherman Daniel - Tiuladokou Stool, Prepaid Internet Card & PCC Planner
Hilda Rengulbai - Tiuladokou Stool, Klamiokl Beauty Shop Certificate & Flashlight
Debbie Ngiraibai - Tiuladokou Stool, Klamiokl Beauty Shop Certificate & Umbrella
Howard Charles - Piglet, PCC Planner & PCC Shirt
Harline Haruo - Palau Beach Bangalow & PCC Planner
Harline Haruo - Palau Beach Bangalow & PCC Planner
Sophie Gibson - Fishing Rod with Gear, Airtime & PCC Planner
Leona Blaluk - Cooler of Fish & PCC Planner
Maria Teruzi - Water Filter with Cartridge & PCC Planner
Kesina Tadao - Flashlight, Airtime, PCC Planner & Umbrella
Maria Teruzi - Garden Hose, Taro Bundle & Pellets Fiber
June Ishibata - DVD Player & PCC Planner
Pioria Ashito - DVD Player & PCC Planner
Gloria Idesiar - DVD Player & PCC Planner
Joyce R. - DVD Player & PCC Planner
Rogelio V. - DVD Player & PCC Planner
Lalii Meyar - DVD Player & PCC Planner
Teongel N. - DVD Player & PCC Planner
Daniel T. - DVD Player & PCC Planner
Katsumi Ngirchokebai - DVD Player & PCC Planner
Husto Ulengchong - DVD Player & PCC Planner
Burt Ldesel - PCC Planner, Wallet, Tropicana Certificate & Book
Kenezey M. - Stainless Steel Knife, Portable Gas Stove & PCC Planner
Richard Ngirngerak - Coffee Maker, Umbrella & PCC Planner
Janissa Ford - Coffee Maker, Umbrella & PCC Planner
Jason Tewid - Plate Set, Stainless Strainer, ID Holder & PCC Planner
Cason Tennyson - Cooler & PCC Planner
Bethwell Emul - Gas Stove & PCC Planner
Alex Ngiraingas - Tiuladokou Paddle, ID Holder, PCC Planner, Shirt & Gas Stove
Sesario Sewralur - Shovel, Skobang, PCC Planner, ID Holder, Shirt & Taro Certificate
Gloria Idesiar - Rice Cooker, PCC Tag & PCC Planner
Todd Ngiramengior - Juice Squeezer, Calendar, License Plate Frame & PCC Planner
Grace Yalap - Extension Cord, PCC Shirt, License Plate Frame, PCC Tag & Umbrella
Grace Salvador - Airpot, Shirt, PCC Tag, Planner, License Plate Frame & Calendar
Joni Kesolei - PCC Bag, Mug, Note Holder, Notebook, Tag, Pen & Letter Opener
Dawkins Dingelius - PCC Bag, Mug, Note Holder, Notebook, Tag, Pen & Letter Opener
Gaylord Rdech - PCC Bag, Mug, Note Holder, Notebook, Tag, Pen & Letter Opener
Hilda Etpison - PCC Bag, Mug, Note Holder, Notebook, Tag, Pen & Letter Opener
Beverley Subris - PCC Bag, Mug, Note Holder, Notebook, Tag, Pen & Letter Opener
Itwong Ongos - USB Fan, Lamp, Palasia Hotel Certificate, PCC Planner & Tag



BITS AND PIECES...

Tan Siu Lin PCC Library

Hours of Operation

Monday to Friday 7:30AM - 7PM

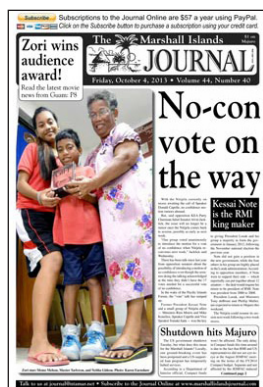
Saturday 9AM - 6PM

Sunday CLOSED

****CLOSED** on Saturdays (December 28, 2013 and January 04, 2014) and on Library Clean-Up Day on Friday (January 10, 2013)**

For More Information, call:
488-3540

MARSHALL ISLANDS JOURNAL



"The Marshall Islands Journal is a dual language, once-a-week publication of the Micronitor News & Printing Company. It is the newspaper of record for the Marshall Islands. The weekly tabloid-size publication is datelined Friday, but is printed on Wednesday and distributed in Majuro on Thursday."

Academic Calendar: Fall 2014

January 01 (W)

Holiday: Happy New Year!

January 02-03 (TH-F)

Placement Testing

January 03 (F)

New Student Orientation

January 06-08 (M-W)

Academic Advising & Registration

News/Stories Wanted

MESEKIU'S NEWS welcomes stories/articles/announcements from students, faculty, and staff. Submission deadline is Tuesday at 4:30 p.m. in hard and/or electronic copies to dilubch@gmail.com or tchuziet@gmail.com.

Articles from MOC/PCC Alumni are also welcome.

Please call 488-2470/2471 (extensions 251, 252, or 253) for more information.

PCC Mesekiu Basketball Team



PCC Mesekiu Basketball Team (missing from photo: Henson Lalimo)

The Palau Community College (PCC) Mesekiu Basketball Team played their first game on Thursday, December 12, 2013. PCC Mesekiu played against the Ngiwal 79ers and won with a final score of 85 to 61 points. The game took place at the Palau National Gymnasium (PNG) and was refereed by Mike Williams.

PCC Mesekiu played their next game on December 17, 2013 against the Breakers. Unfortunately, they lost to the Breakers with a final score of 78 to 83 points. This year's Mesekius are:



David Salapuwa



Tengeluk Ricky



Corleone Nobuo



Jimmy Wi



Christopher Fillimew



Walter Person



Samuel Rengiil



Shonty Ubedei



Nissley Redang



Leeberry Tolenoa



Nena Tilfas



Watson Winner



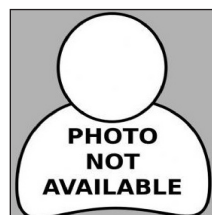
Tommy Obed



Ronnie Thomas



Joey Sumor
Team Captain



Henson Lalimo

ALUMNI NOTES

JAMES LEEROY

(Class of 2011)

ASSOCIATE OF ARTS - LIBERAL ARTS

"Education is the most powerful weapon which you can use to change the world, and deciding to join PCC is just the beginning of your journey to making a change in this world. God bless!"



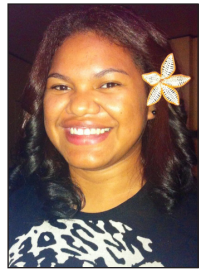
James began working as an Administrative Specialist for Ngiwal State after graduating in 2011 with an AA Degree in Liberal Arts. Currently, he is the acting Coordinator for the PAN Outreach Program in Ngiwal State.

ANDREA UCHEL

(Class of 2012)

ASSOCIATE OF APPLIED SCIENCE - OFFICE ADMINISTRATION

"Don't let the fear of striking out keep you from playing the game."



Andrea graduated in 2012 with an AAS Degree in Hotel Management. Currently, she is studying Business Management at the Adventist University of the Philippines (AUP).

CHELSEA N. POLYCARP

(Class of 2012)

ASSOCIATE OF SCIENCE - AGRICULTURE

"Never give up and continue your education regardless of how impossible it may sometimes seem to be!"



Chelsea graduated in 2012 with an AS Degree in Agriculture. She is currently working on a Bachelor's Degree in Agriculture at the Eastern Oregon University in La Grande, Oregon.

Family Caregiving Course Train-the-Trainer Workshop



February 10 -13, 2014

Venue: Palau Community College - Koror, Palau

AGENDA

DAY 1: General Principles of Adult Education

DAY 2: Lessons 1-4

DAY 3: Lessons 5-8

DAY 4: Marketing the Course

Purpose of Workshop:

Workforce development to have trainers conduct family caregiving courses across USAPI.

Costs:

Registration fees are waived. Participants are to make their own travel & hotel arrangements. To sign up, please e-mail Dr. Ritabelle Fernandes:

fernandes.ritabelle@gmail.com

SPONSORED BY: PALAU MINISTRY OF HEALTH, PALAU COMMUNITY COLLEGE, AND THE PACIFIC ISLANDS GERIATRIC EDUCATION CENTER - UNIVERSITY OF HAWAII

Celebrating Birthdays

Lyndon Masami



January 01

HAPPY BIRTHDAY!

Vacancy Announcement

- (1) *English Instructor*
(Learning Resource Center)
Salary range: \$14,802 - \$24,647 per annum
- (2) *Adjunct Instructors*
(Academic Affairs Office)
Salary range: determined by class credits, educational level, and experience.
- (3) *Dean of Academic Affairs*
(Academic Affairs Office)
Salary range: \$21,911 - \$33,730 per annum
- (4) *Two (2) Cooks*
(Administration Department)
Salary range: \$6,086 - \$10,408 per annum
- (5) *Health & Physical Education Instructor*
(Academic Affairs Office)
Salary range: \$16,010 - \$28,280 per annum
- (3) *Library Assistant*
(Tan Siu Lin PCC Library)
Salary range: \$6,086 - \$10,408 per annum
- (3) *Nursing Instructor*
(Academic Affairs Office)
Salary range: \$16,010 - \$28,280 per annum

For application forms and information, please contact **Harline Haruo** at **PCC Human Resources Office** at 488-2470/2471, extension 227.

E-mail hr@palau.edu or download forms at <http://pcc.palau.edu>

PCC is an Equal Opportunity Employer

PCC Endowment Fund

INVEST IN THE FUTURE OF OUR STUDENTS, OUR COLLEGE, AND OUR NATION

To SUPPORT, CONTACT US TODAY!

P.O. BOX 9 Koror, Palau 96940
Phone: 488-2470/2471 (extensions 251/253)
e-mail: tellei@palau.edu

If you want to join the Biweekly Allotment Program, **contact us NOW!**

FIND PCC ONLINE FOR MORE INFORMATION



<http://pcc.palau.edu>



Palau Community College - PCC

Stamp Here



Mesekiu's News

Palau Community College

P.O. Box 9 Koror, Palau 96940

ALUMNI NOTES showcases MOC & PCC alumni who are positive role models and contribute to the quality of life in their local communities.

If you are that Alumna/Alumnus or know someone who is, please contact the PCC Development Office at telephone numbers 488-2470/2471 (extensions 251, 252, or 253).

We would like to feature you in future *Mesekiu's News* issues.