

FREE!!!

# Palau Community College



## MESEKIU'S NEWS



Friday, October 17, 2014

Weekly Newsletter

Volume 16, Issue 42

## ASPCC Officers Attend Orientation Session



PCC President Dr. Patrick U. Tellei introducing the Robert's Rules of Order to the officers of ASPCC.

On Tuesday, October 14, 2014 an orientation was held for the newly elected officers of the Associated Students of Palau Community College (ASPCC). The orientation introduced the student officers to their duties as outlined in the ASPCC Constitution, the rules of conduct for parliamentary procedures, leadership styles, and advice for conducting successful meetings. Staff from Student Services and the Student Life Division organized the orientation.

The orientation began with a presentation from Palau Community College (PCC) President Dr. Patrick U. Tellei. President Tellei introduced the students to the *Robert's Rules of Order*, the recognized guide to running official meetings. The *Robert's Rules of Order* provide parliamentary procedures used in many official meetings.

President Tellei introduced the students to the rules of conduct such as meeting agendas, motions, points of privilege/information/order, and debating. ASPCC ORIENTATION, CONTINUED ON PAGE 3

### PCC Welcomes SDSU Instructor

On September 25, 2014 San Diego State University (SDSU) Professor Marian Aste visited the campus of Palau Community College (PCC). Professor Aste is teaching the course *TE-596: Second Language Learners in Emerging Nations* for the cohort currently enrolled in the SDSU Bachelor's Degree Program. She is scheduled to meet with SDSU students on Monday and Friday evenings during which she will share her knowledge and expertise about the subject. Professor Aste is an adjunct faculty member of the Bilingual Credential Program at the College of Education of the San Diego State University. During her visit, Professor Aste met with PCC President Dr. Patrick U. Tellei and Acting Dean of Academic Affairs Marianne Temaungil. This was Professor Aste's first visit to Palau.



(left to right): Professor Marian Aste, Acting Dean of Academic Affairs Marianne Temaungil, and PCC President Dr. Patrick U. Tellei.

Palau Community College is an accessible public educational institution helping to meet the technical, academic, cultural, social, and economic needs of students and communities by promoting learning opportunities and developing personal excellence.



## Australian Aid Visit for AEG

contributed by Mathematics Development Adviser Dr. Shelley Dole



(left to right): James Dawson, Caroline Adams, Oona Gopnik-McManus, Associate Dean Marianne Temaungil, Dr. Shelley Dole, and PCC President Dr. Patrick U. Tellei.

On Thursday, September 25, 2014 representatives from the Government of Australia met with Palau Community College (PCC) President Dr. Patrick U. Tellei, Acting Dean of Academic Affairs Marianne Temaungil, and Mathematics Education Development Adviser Dr. Shelley Dole. The meeting was attended by Senior Aid Program Manager Caroline Adams from the Australian Embassy in Pohnpei. Ms. Adams was also representing the Australian Department of Foreign Affairs and Trade (DFAT). She was accompanied by James Lawson and Oona Gopnik-McManus, both from the Australian Volunteers International (AVI).

The group was an Assignment Evaluation Group (AEG) that was set to evaluate the objectives and milestones achieved through the mathematics development work conducted by Dr. Dole. During the meeting, Dr. Dole reported on the mathematics workshops that she had conducted in May and June of this year. The workshops had been delivered to PCC faculty members as well as teachers and curriculum specialists from the Ministry of Education (MOE). Dr. Dole also reported that she was working with Acting Dean of Academic Affairs Temaungil to gain approval from the Palau Community College - Committee on Programs and Curricula (CPC) to include the course as a requirement in the Associate of Science Degree Program in Education for all tracks.

In addition, Dr. Dole is working on developing the mathematics course as a requirement for the MOE Certificate of Teaching. MATHEMATICS, CONTINUED ON PAGE 3

## Palasia Hotel Donates to Endowment



PCC Student Wade Kitalong (right) receiving donation from Palasia Assistant Accounting Manager Nelia T. De Lina (left).

On Tuesday, October 07, 2014 Palau Community College (PCC) received an in-kind donation from Palasia Hotel. The donation was two free, lunch date certificates at the Desomel Restaurant. PCC student Wade Kitalong received the donation on behalf of PCC from Palasia Hotel Assistant Accounting Manager Nelia Toledo De Lina. The college would like to thank Palasia Hotel for its generous support!

## PCC Student Financial Aid Sessions



Students attending a financial aid session at the CRE Training Room.

In the month of September, students of Palau Community College (PCC) attended financial aid sessions hosted by the staff of the Financial Aid & Admissions Office. The sessions covered topics such as financial aid eligibility requirements and the number of credits covered by financial aid. Students attending the sessions were required to sign agreements that confirmed their understanding of the financial aid requirements and their responsibility of maintaining acceptable academic standings.

## **BITS AND PIECES...**

### **Tan Siu Lin PCC Library**

#### **Hours of Operation**

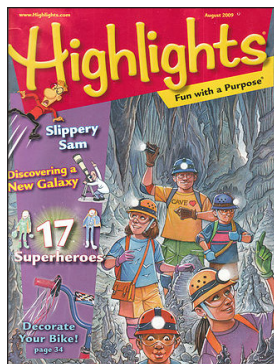
**Monday to Friday** 7:30<sup>AM</sup> - 7<sup>PM</sup>

**Saturday** 9<sup>AM</sup> - 6<sup>PM</sup>

**Sunday** **CLOSED**

For more information, call:  
488-3540.

#### **AVAILABLE TO INTERESTED READERS: HIGHLIGHTS FOR CHILDREN MAGAZINE**



"Highlights for Children Magazine promotes an interest in reading, thinking, and learning. The magazine features fun puzzles & games that helps children develop curiosity and learning skills."

#### **Academic Calendar: Fall 2014**

**October 23 (TH)**

Last Day for All Withdrawals

**October 27-29 (M-W)**

Pre-Registration for Spring 2015

#### **Mesekiu's News Correction**

##### **Mesekiu's News Volume 16, Issue 41:**

Featured Endowment Contributor Diolyn U. Temol was mistakenly described as Supervisor in her job description. She is actually the Accounting Clerk of the Airai Surangel Warehouse. *Mesekiu's News* apologizes for the error.

#### **News/Stories Wanted**

*Mesekiu's News* welcomes stories/articles/announcements from students, faculty, and staff. Submission deadline is Tuesday at 4:30 p.m. in hard and/or electronic copies to [dilubch@gmail.com](mailto:dilubch@gmail.com) or [tchuziet@gmail.com](mailto:tchuziet@gmail.com).

Articles from MOC/PCC Alumni are also welcomed.

Please call 488-2470/2471 (extensions 251, 252, or 253) for more information.

## **ASPCC Orientation** CONTINUED FROM PAGE 1

Following President Tellei's presentation, Academic Advisor Winfred Recheiungel and Dorm Manager Ephraim Ngirachitei introduced the student officers to the by-laws outlined in the ASPCC Constitution. They led the student officers in a reading of the constitution and identified the important parts of the document that they must uphold. Afterwards, Academic Advisor Glendalynn Ngirmeriil provided the student leaders with useful information about conducting successful meetings which included advice about time management and polite consideration during debates.

The orientation concluded with a final presentation by Academic Advisor Maurine Alexander. Academic Advisor Alexander introduced the students to the three leadership types identified by Social Psychologist Kurt Lewin: Authoritarian Leadership (Autocratic), Participative Leadership (Democratic), and Delegative Leadership (Laissez-faire). The ASPCC officers were advised about each leadership type and their applications for different situations; as leaders, the ASPCC officers should understand their issues and dictate which leadership role is best suited.

The general welfare of the PCC student body is the sole responsibility of the ASPCC officers. Their responsibilities include voicing out the concerns of students, organizing student events, and representing the students at school events. Students registered in degree programs are members of the association.

## **Mathematics** CONTINUED FROM PAGE 2

Dr. Dole's position at PCC is funded by the Australian Aid (AusAID) and is aligned with the partnership agreement between the Government of Australia and the Government of Palau. The main objectives of the assignment are to improve the quality of mathematics teaching and learning at local schools as well as the Ministry of Education; and, through PCC, build the capacity of Palauan teachers to deliver the Singapore Mathematics Curriculum in Palauan schools. Dr. Dole's assignment in Palau concludes on November 18, 2014.

## **Support the Palau Community College Thanksgiving Endowment Fundraiser!**

To purchase tickets or make donations to the Endowment Fundraising Event, contact:



**Palau Community College  
Development Office**  
tel: 488-2470/2471 ext. 251 or 253



**PURCHASE A \$10 TICKET**  
You need not be present to win fabulous prizes!

### **ENDOWMENT THANKSGIVING FUNDRAISER**

An Annual Palau Community College Event

**Place: PCC Courtyard**  
**Date: Wednesday, November 26, 2014**  
**Time: 12:30PM - 5:30PM**

**WEDNESDAY, NOVEMBER 26, 2014**

**Contact the PCC Development Office for more information:**

**tel: 488-2470/2471 ext. 251, 252, or 253.**

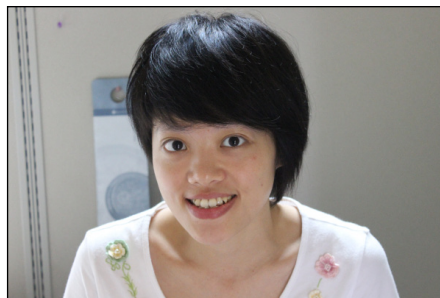


## FACULTY PROFILE

### HUA HSIN HSU

MANDARIN LANGUAGE INSTRUCTOR

*"I'm still new to Palau but I like the people. Everyone has been very kind! As an instructor, I look forward to sharing my culture and learning about the Palauan culture."*



Instructor Hua Hsin Hsu is from the Republic of China - Taiwan. She was hired in August of this year as the new Mandarin Language (Conversational Chinese) Instructor. Her job description includes teaching the basic speaking and writing skills of the Mandarin language. Instructor Hsu graduated from the National Central University in the Republic of China with a degree in Chinese Literature. Her hobbies include reading and playing volleyball.

## ALUMNI NOTES

### JOYCE D. IKEDA

(Class of 2013)

ASSOCIATE OF APPLIED SCIENCE - OFFICE ADMINISTRATION

*"Never give up!"*



Joyce graduated in 2013 with an AAS Degree in Office Administration. She currently works for the Surangel Warehouse in Airai as a Cashier.

## Newest Contributor to the PCC Endowment Fund



Palau Community College (PCC) would like to recognize its newest Endowment Fund contributor, Sherman Kelmal. Mr. Kelmal works for the Kayangel State Government. Thank you, Mr. Kelmal, for your generous contribution to Palau's only institute of higher learning! Your donation will help sustain the future stability and programs of Palau Community College.

### Celebrating Birthdays

Rogelio G. Santos	October 17
Marianne Temaungil	October 18
Samantha T. Bells	October 21



**HAPPY BIRTHDAY!**

### VACANCY ANNOUNCEMENT

- 1) *Nursing Instructor*  
(Academic Affairs Division)  
salary range: \$16,010 - \$28,280 per annum
- 2) *Instructional Assistant, Construction Technology*  
(Academic Affairs Division)  
salary range: \$8,991 - \$15,378 per annum
- 3) *Small Engine Instructor*  
(Academic Affairs Division)  
salary range: \$16,010 - \$28,280 per annum
- 4) *Adjunct Instructors*  
(Academic Affairs Division)  
salary range: determined by class credits, educational level, and experience

For application forms and information, please contact Harline Haruo at PCC Human Resources Office at 488-2470/2471, extension 227.

E-mail [hr@palau.edu](mailto:hr@palau.edu) or download forms at

<http://pcc.palau.edu>

PCC is an Equal Opportunity Employer

## PCC Endowment Fund

### INVEST IN THE FUTURE

OF OUR STUDENTS, OUR COLLEGE, AND OUR NATION

**TO SUPPORT, CONTACT US TODAY!**

P.O. BOX 9 Koror, Palau 96940

Phone: 488-2470/2471 (ext. 251/253)

e-mail: [tellei@palau.edu](mailto:tellei@palau.edu)

If you want to join the Bi-Weekly Allotment Program, **contact us NOW!**

### FIND PCC ONLINE FOR MORE INFORMATION



<http://pcc.palau.edu>



Palau Community College - PCC



*Mesekiu's News*

Palau Community College

P.O. Box 9 Koror, Palau 96940

**ALUMNI NOTES** showcases MOC & PCC alumni who are positive role models and contribute to the quality of life in their local communities.

If you are that Alumna/Alumnus or know someone who is, please contact the PCC Development Office at telephone numbers 488-2470/2471 (extensions 251, 252, or 253).

We would like to feature you in future *Mesekiu's News* issues.

Stamp Here