

FREE!!!

# Palau Community College



# MESEKIU'S NEWS



Friday, February 13, 2015

Weekly Newsletter

Volume 17, Issue 07

## CRE Participates in Farmers' Association Showcase



(left to right): \_\_\_\_\_, Siliang Michael, Dalton Thomas, and Leory Fritz representing CRE at the Palau-Taiwan Farmers' Association Showcase

The Cooperative Research & Extension (CRE) Department of Palau Community College (PCC) participated in a showcase for the Palau-Taiwan Farmers' Association (PTFA) on Tuesday, February 10, 2015. CRE set up booths that featured its current agriculture, food technology, and aquaculture projects. Also participating in the event were Dr. Robert V. Bishop of the United Nations Food & Agriculture Organization (FAO) and representatives from the Belau National Museum.

Information showcased by CRE included recipes that used local produce as ingredients in nutritious meals, steps to starting small-scale farm projects especially in urban home settings, and posters explaining the importance of aquaculture. A raffle drawing in the afternoon allowed members of the community to win breadfruit plants that were grown at the CRE facility in Ngeremlengui. The PTFA Showcase promoted the distribution of local products via methods applicable in Palau. CRE SHOWCASE, CONTINUED ON PAGE 3

### LRC Undergoes Renovations

The Learning Resource Center (LRC) of Palau Community College (PCC) is currently undergoing renovations. The room that serves as a study area is being rewired and its floor is being replaced. In addition, the walls were stripped away and replaced with better material. Palau Community College would like to thank the maintenance workers for improving the tutoring facility. The Learning Resource Center is an important part of the college. It provides academic & non-academic services that identify and support student learning. The center offers tutoring sessions, PCC placement testing, institutional TOEFL testing, and counseling for students transferring to four-year universities/colleges. LRC also administers the Asian American and Native American Pacific Islander Serving Institution (AANAPISI) program.



PCC maintenance workers diligently working to renovate and improve the LRC facility

**Happy Valentine's Day!**

Palau Community College is an accessible public educational institution helping to meet the technical, academic, cultural, social, and economic needs of students and communities by promoting learning opportunities and developing personal excellence.

## Recruitment and Financial Aid Night

contributed by the Office of Admissions & Financial Aid

Representatives from Palau Community College (PCC) held recruitment & financial aid sessions from January 23 to 30, 2015. The college representatives from the Office of Admissions & Financial Aid consisted of Director Dahlia M. Katosang and her staff. In the span of eight days, Director Katosang and her staff were busy with recruitments at the local high schools during the day and financial aid sessions in the evenings.

Topics discussed during the recruitment meetings included PCC academic programs, services, and admissions requirements. Admissions application forms were distributed and filled, with the assistance of college personnel, by interested high school seniors.

During financial aid night sessions, the Office of Admissions & Financial Aid staff met with the seniors and their parents. The meetings provided information about topics such as the federal student aid programs and eligibility requirements. Financial aid forms were also distributed to and completed by interested seniors.

PCC was able to reach 214 (81%) of the 265 seniors for recruitment sessions and 156 (59%) for the financial aid night sessions. As part of the recruitment activities, the Office of Admissions & Financial Aid will continue to contact students who were not able to attend the sessions, provide information, and assist those interested in applying to PCC.

For more information or inquiries regarding Admissions & Financial Aid for the 2015-2016 School Year, contact the Office of Admissions & Financial Aid at 488-2470, ext. 235.



Office of Admissions & Financial Aid Representatives holding a recruitment session with students from Palau High School (PHS)

## New Endowment Fund Contributors



(left to right): Mary Arius, Joanne Mikel, Rilla Ngirmidol, and Emrei Takeo

Palau Community College (PCC) would like to recognize its newest Endowment Fund contributors from the Ministry of Education: Mary Arius, Joanne Mikel, Rilla Ngirmidol, and Emrei Takeo. Thank you all for contributing to Palau's only institution of higher learning! Your donations will help sustain the future stability and programs of Palau Community College.

## A MESSAGE TO THE STUDENTS FROM STUDENT LIFE:

"Director Hilda N. Reklai and the academic advisors/counselors of the Student Life & Housing Unit would like to remind all students that it is the fourth week of the spring semester. In two weeks, mid-term examinations will be taken. Until then, Director Reklai and the counselors would like to encourage all PCC students to attend their classes and try their best. Attendance is just as important as performance! If any student needs assistance, the counselors of Student Life are more than happy to help! Also, the Learning Resource Center (LRC) is always open to anyone who needs tutoring."

"HAPPINESS DOES NOT COME FROM DOING EASY WORK BUT FROM THE AFTERGLOW OF SATISFACTION THAT COMES AFTER THE ACHIEVEMENT OF A DIFFICULT TASK THAT DEMANDED OUR BEST."

- THEODORE ISAAC RUBIN

# BITS AND PIECES...

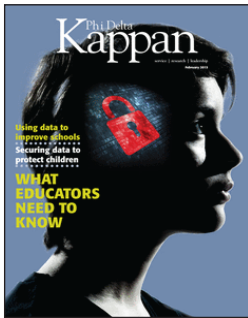
## Tan Siu Lin PCC Library

### Hours of Operation

Monday to Friday 7:30AM - 7PM  
 Saturday 9AM - 6PM  
 Sunday CLOSED

For more information, call:  
 488-3540.

### AVAILABLE TO INTERESTED READERS: PHI DELTA KAPPAN MAGAZINE



"Phi Delta Kappan Magazine is the flagship magazine of PDK International, a professional association for educators that focuses on tenets of service, research, and leadership. Selected Kappan articles are presented here through a content-sharing partnership with Education Week."

### Academic Calendar: Spring 2015

**March 09-13 (M-F)**  
 Mid-Term Period

**March 27 (F)**  
 Last Day for All Withdrawals

**March 30 (M)**  
 Summer 2015 Pre-Registration

### News/Stories Wanted

Mesekiw's News welcomes stories/articles/announcements from students, faculty, and staff. Submission deadline is Tuesday at 4:30 p.m. in hard and/or electronic copies to [dilubch@gmail.com](mailto:dilubch@gmail.com) or [tchuziet@gmail.com](mailto:tchuziet@gmail.com).

Articles from MOC/PCC Alumni are also welcomed.

Please call 488-2470/2471 (extensions 251, 252, or 253) for more information.

## CRE Showcase CONTINUED FROM PAGE 1



Hydroponics - A Sustainable Food Production System for Urban Areas



Chips, starch, and flour made from locally grown tapioca & taro



Breadfruit plants, grown by CRE, that were given as prizes for a raffle drawing



Dr. Aurora Del Rosario (sitting) providing information about sustainable food production



Local products made from local ingredients showcased by the Belau National Museum



Dr. Bishop teaching a passerby how to make treats, like candy, with local ingredients

Taiwan International Cooperation and Development Fund  
 2015 Taiwan ICDF International Higher Education Scholarship Program

A Better World, A Brighter Future

The Taiwan International Cooperation and Development Fund (TaiwanICDF) is a strong supporter of international education and training. Each year, in collaboration with universities and post-secondary educational institutions in Taiwan, TaiwanICDF provides scholarships for specific trades and academic pursuits. The plan to promote the TaiwanICDF Scholarship Program was first started with the intent to train agricultural professionals. This was later extended to other research fields to diversify the overall scholarship program.

As of 2015, the TaiwanICDF has been cooperating with twenty-one (21) universities in thirty-four (34) programs of study.

application forms available at:  
<http://www.icdf.org.tw/TSP/Register.aspx>

A list of all the universities and scholarships offered is on the TaiwanICDF website. Also, a copy of the information may be obtained at the PCC Development Office: 488-2470/2471 ext. 252 or 253.

DEADLINE: March 16, 2015

## STAFF & FACULTY PROFILE

### SAMPSON SARFO

MATHEMATICS & BUSINESS INSTRUCTOR

*"Let us take care of ourselves by being conscious of our health: eat well, exercise, and get enough rest. By taking care of our health, we can decrease depression & anxiety and enjoy better days."*



Sampson Sarfo is from Ghana, Africa. For over a year, he has been teaching mathematics and business courses at PCC. He holds a Master's Degree in Economics, a Bachelor's Degree in Business, and a four-year Certificate in Teaching. Instructor Sarfo has taught mathematics and business areas, specifically in the fields of accounting & financing. He is a member of the Seventh-Day Adventist Church Group and is the Chairman for the Health Ministry Organization. Mr. Sarfo enjoys reading, singing, and playing the guitar in his free time.

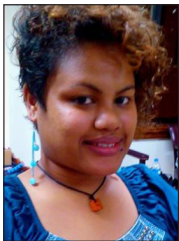
## ALUMNI NOTES

### KERENG IKERDEU

(Class of 2013)

ASSOCIATE OF SCIENCE - INFORMATION TECHNOLOGY

*"As the saying goes: 'It doesn't matter how slow you are going as long as you don't stop.'"*



Kereng graduated in 2013 with an AS Degree in Information Technology. After graduating, she worked as a Sales Marketing Manager for three months. Currently, Ms. Ikerdeu works as a Computer Technician for the Palau Supreme Court.



### Mesekiu's News

Palau Community College

P.O. Box 9 Koror, Palau 96940

**ALUMNI NOTES** showcases MOC & PCC alumni who are positive role models and contribute to the quality of life in their local communities.

If you are that Alumna/Alumnus or know someone who is, please contact the PCC Development Office at telephone numbers 488-2470/2471 (extensions 251, 252, or 253).

We would like to feature you in future *Mesekiu's News* issues.

## PCC Welcomes New Talent Search Staff Member



Palau Community College (PCC) would like to give a belated welcome to the newest member of the Talent Search Program staff, Thomas Borja. Mr. Borja is working for Talent Search as an Academic Advisor/Counselor. He is an alumnus of the college and holds an Associate of Arts Degree in Liberal Arts. Mr. Borja also holds a Bachelor's Degree in Education from San Diego State University.

## VACANCY ANNOUNCEMENT

- (1) Instructional Assistant - Construction Technology  
(Academic Affairs Division)  
salary range: \$8,991 - \$15,378 per annum
- (2) Nursing Instructor  
(Academic Affairs Division)  
salary range: \$16,010 - \$28,280 per annum
- (3) Small Engine Instructor  
(Academic Affairs Division)  
salary range: \$16,010 - \$28,280 per annum
- (4) Adjunct Instructors  
(Academic Affairs Division)  
salary range: determined by class credits,  
educational level, and experience.
- (5) Twenty (20) Part-Time Tutors  
(Educational Talent Search Office)  
salary range: \$400 - \$1,200 per annum
- (6) Career/Transfer Counselor  
(Learning Resource Center - Student Service)  
salary range: \$14,802 - \$24,647 per annum
- (7) Part-Time Teachers  
English, Math, Science, Health, Occupational Knowledge,  
Government & Law, Consumer Economics, Community  
Resources, College Preparation, and Computer Literacy  
(PCC Adult High School)  
salary range: \$980 - \$1,350 per course
- (8) Director of Research and Development  
(PCC Cooperative Research & Extension)  
salary range: \$18,730 - \$28,833 per annum
- (9) Administrative Assistant  
(PCC Cooperative Research & Extension)  
salary range: \$10,929 - \$18,692 per annum

For application forms and information, contact Harline Haruo at the PCC Human Resources Office at 488-2470/2471 extension 227, or e-mail: [hr@palau.edu](mailto:hr@palau.edu), or download forms at <http://pcc.palau.edu>.

"PCC is an Equal Opportunity Employer."

## FIND PCC ONLINE FOR MORE INFORMATION



<http://pcc.palau.edu>



Palau Community College - PCC

## Celebrating Birthdays

Robert Ramarui		February 13
Demy F. Emesiochel		February 16
Lourdes M. Reksid		February 17

**HAPPY BIRTHDAY!**

## PCC Endowment Fund

### INVEST IN THE FUTURE

OF OUR STUDENTS, OUR COLLEGE, AND OUR NATION

**To SUPPORT, CONTACT US TODAY!**

P.O. BOX 9 Koror, Palau 96940

Phone: 488-2470/2471 (ext. 251/253)

e-mail: [tellei@palau.edu](mailto:tellei@palau.edu)

If you want to join the Bi-Weekly Allotment Program, contact us NOW!

Stamp Here