

FREE!!!

Palau Community College



MESEKIU'S NEWS



Friday, March 06, 2015

Weekly Newsletter

Volume 17, Issue 10

PCC to Host Annual CTE Awareness Week



Scenes from the 2014 Career & Technical Education Week

Palau Community College (PCC) will be hosting the annual Career & Technical Education (CTE) Awareness Week on March 18, 2015 to March 20, 2015. The awareness week is an opportunity for the college to showcase and promote its programs to elementary/high school students as well as the community.

Students from the elementary schools and high schools of Palau participating in the program will visit all the technical education programs offered at the college. In addition, students will also learn about other academic programs that are offered. College faculty members will be present to answer any questions that the students may have about the program.

Last year, over four-hundred (400) students from the local high schools participated in the CTE Week hosted at the college. This year, the CTE Week will be open to elementary school students and interested members of the community. For more information about the event, please call the PCC Academic Affairs Office at 488-2470/2471 ext. 245, 246, or 247. CTE WEEK, CONTINUED ON PAGE 3

MVS Donates to PCC

The Micronesian Voyaging Society (MVS) donated \$7,000 on Wednesday, March 04, 2015, to the college. MVS members who presented the donation were Ibedul Yutaka Gibbons, MVS President Shallum Etpison, Palau Community College (PCC) President Dr. Patrick U. Tellei, Alan Seid, Tina Rechucher, and Ephraim Ngrachitei. MVS was created under the influence of Pius Mau Pialug, a master navigator from the island of Satawal in Yap State. The society promotes and supports non-instrumental navigation methods historically present in the Pacific island cultures. The society continues to fundraise to maintain *Alingano Maisu*, a seafaring vessel used in the non-instrumental course offered at PCC under the tutelage of Sesario Sewralur, the son of Mr. Pialug.



(left to right): Alan Seid, Ibedul Yutaka Gibbons, PCC President Dr. Patrick U. Tellei, MVS President Shallum Etpison, Tina Rechucher, and Ephraim Ngrachitei

Palau Community College is an accessible public education institution helping to meet the technical, academic, cultural, social, and economic needs of students and communities by promoting learning opportunities and developing personal excellence.

PCC Baseball Team Wins Season Opener



The Palau Community College (PCC) Mesekiu Baseball Team

On Saturday, February 27, 2015 the Palau Community College (PCC) baseball team played and won the season opener against the defending champions, the Airai Aces, in extra-innings by a score of 11-9.

As visitors, the PCC Mesekius started on the offence and quickly scored five runs in the top of the first inning. Then behind superb pitching by returning starter David Salapwa, PCC widened its lead in the third inning when left fielder Vincent Kulas added another run via a solo homer over the left field wall. In the fourth, fifth, and sixth innings the Airai Aces displayed their prowess as champions as they fought their way back to tie the game and take the lead at 9-6.

In the sixth-inning, the PCC Mesekius scored two runs to cut the deficit to 9-8 and scored a run in the seventh-inning to tie the game at 9-9. Looking to extend the game for a chance to win, PCC Coach Norman Sato made a gutsy decision to put the game in the hands of reliever Ray Rumong.

Reliever Rumong surprised everyone by retiring the side with two strikes-outs and sent the game into extra innings. With momentum behind them, the PCC Mesekius opened the extra-inning with two runs courtesy of Marvic Ngchar's 2-RBI single, putting PCC Mesekius ahead with a 11-9 lead.

In the bottom of the eighth, the defending champions needed two runs to continue or three runs to win the game. However, the PCC Mesekius would not let them as Reliever Rumong continued his dominance by striking-out two and holding the Airai Aces scoreless for the final score of 11-9. Congratulations to the PCC Mesekiu Baseball team on a great win for the season opener! MESEKIU BASEBALL, CONTINUED ON PAGE 3

NEW PCC T-SHIRTS



AVAILABLE AT BOOKSTORE!

NATIONAL TAIPEI UNIVERSITY OF NURSING AND HEALTH SCIENCES

Apply for the following three international scholarships for the opportunity to earn an International Nursing Master of Science Degree or an International Nurse-Midwifery Master of Science Degree at the National Taipei University of Nursing and Health Sciences in Taiwan:

TaiwanICDF Scholarship

<http://www.icdf.org.tw/ct.asp?xItem=12505&CtNode=30316&mp=2>

Taiwan Scholarship

<https://www.taiwanscholarship.moe.gov.tw>

NTUNHS Scholarship

<http://rnd.ntunhs.edu.tw/files/90-1004-48.php>

You can also visit the PCC Development Office for more information.

BITS AND PIECES...

Tan Siu Lin PCC Library

Hours of Operation

Monday to Friday 7:30AM - 7PM
Saturday 9AM - 6PM
Sunday CLOSED

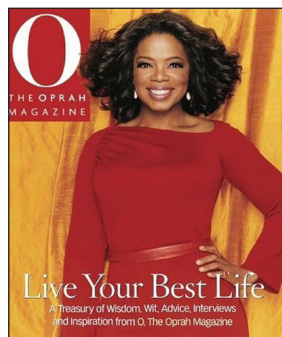
For more information, call:
488-3540.

AVAILABLE, COURTESY OF UNITED AIRLINES:

PACIFIC DAILY NEWS

AVAILABLE TO INTERESTED READERS:

THE OPRAH MAGAZINE



"O (The Oprah Magazine) provides information and inspiration on everything from lasting love to luscious food, from getting healthy to getting dressed, from the joys of reading to the rush of learning how to do everything a little better."

Academic Calendar: Spring 2015

March 09-13 (M-F)
Mid-Term Period

March 27 (F)
Last Day for All Withdrawals

March 30 (M)
Summer 2015 Pre-Registration

News/Stories Wanted

Mesekiu's News welcomes stories/articles/announcements from students, faculty, and staff. Submission deadline is Tuesday at 4:30 p.m. in hard and/or electronic copies to dilubch@gmail.com or tchuziet@gmail.com.

Articles from MOC/PCC Alumni are also welcomed.

Please call 488-2470/2471 (extensions 251, 252, or 253) for more information.

Mesekiu Baseball

CONTINUED FROM PAGE 2

The second game between Ngergched and Ngerbeches was suspended at the end of the third-inning. According to one of the umpires, it was "due to darkness as the lights [were] still not working and they do not know when they'll be fixed." Because of the problems with the lights at Asahi Field, all games are scheduled for Saturday afternoons. The next game for the PCC will be against Ngerbeched at 1:00PM on March 07, 2015.

CTE Week

CONTINUED FROM PAGE 1

CAREER & TECHNICAL EDUCATION WEEK SCHEDULE:

Wednesday (March 18, 2015)

ELEMENTARY SCHOOL STUDENTS (TWO GROUPS)

8:30AM - 9:00AM: Welcoming Remarks @ Btaches Building/Parking Lot
9:00AM - 11:30AM: Programs Tour with PCC Student Guide
11:00AM - 1:00PM: LUNCH
1:00PM - 1:30PM: Welcoming Remarks @ Btaches Building/Parking Lot
1:30PM - 4:00PM: Programs Tour with PCC Student Guide

Thursday (March 19, 2015)

HIGH SCHOOL STUDENTS (TWO GROUPS)

8:30AM - 9:00AM: Welcoming Remarks @ Btaches Building/Parking Lot
9:00AM - 11:30AM: Programs Tour with PCC Student Guide
11:00AM - 1:00PM: LUNCH
1:00PM - 1:30PM: Welcoming Remarks @ Btaches Building/Parking Lot
1:30PM - 4:00PM: Programs Tour with PCC Student Guide

Friday (March 20, 2015)

OPEN TO THE PUBLIC from 9:00AM to 4:00PM.

Taiwan International Cooperation and Development Fund 2015 Taiwan ICDF International Higher Education Scholarship Program

A Better World, A Brighter Future

The Taiwan International Cooperation and Development Fund (TaiwanICDF) is a strong supporter of international education and training. Each year, in collaboration with universities and post-secondary educational institutions in Taiwan, TaiwanICDF provides scholarships for specific trades and academic pursuits. The plan to promote the TaiwanICDF Scholarship Program was first started with the intent to train agricultural professionals. This was later extended to other research fields to diversify the overall scholarship program.

As of 2015, the TaiwanICDF has been cooperating with twenty-one (21) universities in thirty-four (34) programs of study.

application forms available at:

<http://www.icdf.org.tw/TSP/Register.aspx>

A list of all the universities and scholarships offered is on the TaiwanICDF website. Also, a copy of the information may be obtained at the PCC Development Office: 488-2470/2471 ext. 252 or 253.

DEADLINE: March 16, 2015

FACULTY & STAFF PROFILE

MARVIN YAROF AISUG

SMALL ENGINE INSTRUCTIONAL ASSISTANT

"You have to be dedicated and study hard if you want to have a better future someday."



Marvin Yarofaisug was recently hired as an Instructional Assistant for the Small Engine courses of Palau Community College (PCC). He is from the island of Yap and has been in Palau for nearly ten years. In 2008, Instructional Assistant Yarofaisug graduated from PCC with an Associate of Applied Science (AAS) Degree in Small Engine & Outboard Motor Technology. In his free time, Mr. Yarofaisug enjoys fishing.

ALUMNI NOTES

CHANCE S. DOUGLAS

(Class of 2012)

ASSOCIATE OF APPLIED SCIENCE - OFFICE ADMINISTRATION

"If your inner-voice says you cannot do it, then by all means go for it and that inner-voice of yours will be silenced. The only way to gain great success is to take a chance and go for it!"



Chance graduated in 2012 with an AAS Degree in Office Administration. He currently attends the University of Guam (UOG) where he is studying Public Administration and Criminal Justice.



Mesekiu's News

Palau Community College

P.O. Box 9 Koror, Palau 96940

ALUMNI NOTES showcases MOC & PCC alumni who are positive role models and contribute to the quality of life in their local communities.

If you are that Alumna/Alumnus or know someone who is, please contact the PCC Development Office at telephone numbers 488-2470/2471 (extensions 251, 252, or 253).

We would like to feature you in future *Mesekiu's News* issues.

Newest Contributor to the PCC Endowment Fund



Palau Community College (PCC) would like to recognize its newest Endowment Fund contributor, Frauline Chisato. Ms. Chisato works as a Housekeeper for the Ministry of Health. Thank you, Ms. Chisato, for your contribution to Palau's only institution of higher learning! Your donation will help sustain the future stability and programs of Palau Community College.

VACANCY ANNOUNCEMENT

- (1) Instructional Assistant - Construction Technology
(Academic Affairs Division)
salary range: \$8,991 - \$15,378 per annum
- (2) Nursing Instructor
(Academic Affairs Division)
salary range: \$16,010 - \$28,280 per annum
- (3) Small Engine Instructor
(Academic Affairs Division)
salary range: \$16,010 - \$28,280 per annum
- (4) Adjunct Instructors
(Academic Affairs Division)
salary range: determined by class credits, educational level, and experience.
- (5) Twenty (20) Part-Time Tutors
(Educational Talent Search Office)
salary range: \$400 - \$1,200 per annum
- (6) Career/Transfer Counselor
(Learning Resource Center - Student Service)
salary range: \$14,802 - \$24,647 per annum
- (7) Part-Time Teachers
English, Math, Science, Health, Occupational Knowledge, Government & Law, Consumer Economics, Community Resources, College Preparation, and Computer Literacy (PCC Adult High School)
salary range: \$980 - \$1,350 per course
- (8) Director of Research and Development
(PCC Cooperative Research & Extension)
salary range: \$18,730 - \$28,833 per annum
- (9) Administrative Assistant
(PCC Cooperative Research & Extension)
salary range: \$10,929 - \$18,692 per annum

For application forms and information, contact Harline Haruo at the PCC Human Resources Office at 488-2470/2471 extension 227, or e-mail: hr@palau.edu, or download forms at <http://pcc.palau.edu>.

"PCC is an Equal Opportunity Employer."

FIND PCC ONLINE FOR MORE INFORMATION



<http://pcc.palau.edu>



Palau Community College - PCC

Celebrating Birthdays

Deikola Olikong
William T. Mitchell



March 08
March 12

HAPPY BIRTHDAY!

PCC Endowment Fund

INVEST IN THE FUTURE

OF OUR STUDENTS, OUR COLLEGE, AND OUR NATION

To SUPPORT, CONTACT Us TODAY!

P.O. BOX 9 Koror, Palau 96940

Phone: 488-2470/2471 (ext. 251/253)

e-mail: tellei@palau.edu

If you want to join the Bi-Weekly Allotment Program, **contact us NOW!**

Stamp Here