

FREE!!!

# Palau Community College



# MESEKIU'S NEWS



Friday, October 16, 2015

Weekly Newsletter

Volume 17, Issue 42

## Niigata College of Art & Design Students Visit PCC



*PCC students and the students from the Niigata College of Art & Design*

On Wednesday, October 07, 2015 a group of nine (9) students from the Niigata College of Art & Design visited the campus of Palau Community College (PCC) to participate in an exchange with students from Palau. The students were accompanied by Niigata College of Art & Design President Kazuhito Kato and PCC Dean of Students Sherman Daniel. Kaipo Recheungel served as an interpreter for the students.

The student exchange was held at the Continuing Education (CE) Training Room. After introductions, the students were given the opportunity to interact with one another through various activities such as drawing, playing board games, and learning how to make jewelry. Niigata College of Art & Design is located in Niigata-City, Japan. It provides various programs that focus on creative skills and production.

Student exchanges between PCC students and students from Niigata College of Art & Design, which occurs on an annual basis, is an opportunity for the students to broaden their understanding of different cultures. NIIGATA COLLEGE, CONTINUED ON PAGE 3

### EducationUSA Relaunch at PCC

On Thursday, October 08, 2015 Regional Educational Advising Coordinator Michael Shaver held a meeting at the Conference Room of the Tan Siu Lin Palau Community College (PCC) Library to relaunch EducationUSA in Palau. He provided information on the following topics that address post-secondary education opportunities in the United States: the admissions process and standardized testing requirements; how to finance a U.S. education; the student visa process; and preparing for departure to the United States. EducationUSA is a network of more than four-hundred (400) international advising centers around the world under the United States Department of State. The advising centers promote higher education in the United States by providing the necessary information for interested international students. PCC is the EducationUSA Advising Center for Palau.



*Coordinator Michael Shaver providing information about education in the United States*

*Palau Community College is an accessible public education institution helping to meet the technical, academic, cultural, social, and economic needs of students and communities by promoting learning opportunities and developing personal excellence.*

## 2015 Taiwan Vocational Training Project



*Participants of the 2015 Taiwan Vocational Training Project*

Palau Community College (PCC) Instructional Assistant I Galindez Kiep is currently participating in the 2015 Vocational Training Project for Youth in the Pacific that is being sponsored by the Republic of China (ROC) Government. The training project is being administered by the Taiwan International Cooperation and Development Fund (ICDF) in collaboration with the Taichung-Changhua Nantou Regional (TCNR) Branch of the Ministry of Labor's Workforce Agency.

Covering a fifteen-week period, the 2015 Vocational Training Project for Youth in the Pacific offers professional skills and knowledge in three (3) trades: electrical & electronic engineering, automotive mechanics, and woodworking. Participants will have the opportunity to put theoretical courses learned in the classroom into practice through integrated operations. TAIWAN, CONTINUED ON PAGE 3

## Arne Duncan Resigns from Position



*Arne Duncan*

United States Secretary of Education Arne Duncan will be resigning from his position in December. He will be succeeded by Deputy Secretary of Education John B. King, Jr. During his tenure as Secretary of Education, Mr. Duncan helped community colleges in the United

States meet the unprecedented demand to provide the needed educational opportunities for more than 12 million American students each year. His legacy is one that established strong support for community colleges across America.

## WCTC Donates to Endowment Fund



*PCC student Sky F. Meltel (left) receiving a donation from WCTC Human Resource Manager Fyke Ucherbelau (right)*

Palau Community College (PCC) recently received a donation of \$2,500 from the Western Caroline Trading Company (WCTC). The donation was made in support of the upcoming PCC Endowment Thanksgiving Fundraiser. PCC student Sky F. Meltel received the donation on behalf of the college from WCTC Human Resources Manager Fyke Ucherbelau. PCC thanks WCTC for its continued support!

## Surangel & Sons Company Donates



*PCC student Sky F. Meltel (right) receiving a donation from Surangel Employee Ha'eva I. Mamis (left)*

Surangel & Sons Company recently donated \$5,000 to Palau Community College (PCC) in support of its upcoming Thanksgiving Endowment Fundraiser. The donation was presented by Surangel & Sons Company Employee Ha'eva I. Mamis and was received on behalf of the college by PCC student Sky F. Meltel. PCC would like to thank Surangel & Sons Company for generously supporting its fundraising efforts!

# BITS AND PIECES...

## Tan Siu Lin PCC Library

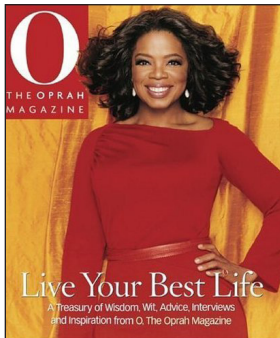
### Hours of Operation

Monday to Thursday 7:30AM - 7PM  
 Friday 7:30AM - 5PM  
 Saturday 9AM - 6PM  
 Sunday CLOSED

For more information, call:  
 488-3540

### AVAILABLE TO INTERESTED READERS:

#### O: THE OPRAH MAGAZINE



"O: The Oprah Magazine is a magazine published by Oprah Winfrey and her company. It is comprised of articles that relate to self, beauty, and personal care. It also includes reviews of entertainment, such as books."

### Academic Calendar: Fall 2015

#### October 26 (M)

Last Day for All Withdrawals

#### October 29 (TH)

SPRING 2016 Pre-Registration

#### December 04 (F)

Last Day of Instruction

#### December 07-09 (M-W)

Final Examination Period

### News/Stories Wanted

Mesekiw's News welcomes stories/articles/announcements from students, faculty, and staff. Submission deadline is Wednesday at 4:30 p.m. in hard and/or electronic copies to [dilubch@gmail.com](mailto:dilubch@gmail.com) or [tchuziet@gmail.com](mailto:tchuziet@gmail.com).

Articles from MOC/PCC Alumni are also welcomed.

Please call 488-2470/2471 (extensions 251, 252, or 253) for more information.

## Niigata College CONTINUED FROM PAGE 1



Niigata College student teaching a PCC student how to play "Othello"



PCC students with a student from Niigata College of Art & Design



PCC Vice President Jay Olegeriil, PCC President Dr. Patrick U. Tellei, and Dean of Students Sherman Daniel meeting with the President Kazuhita Kato from Niigata College



Niigata College of Art & Design student (right) showing the cartoon caricature that she drew of ASPCC President Benigno S. Sablan during the student exchange at the CE Training Room

## Taiwan CONTINUED FROM PAGE 2

PCC Instructional Assistant I Kiep, who teaches the refrigeration & air-conditioning courses at the college, is participating in the vocational training for electrical & electronic engineering. Upon completing the program, Instructional Assistant I Kiep and his fellow trainees will return to their respective islands with the capabilities necessary to promote industrial skills & knowledge at a local level as well as increase the industrial competencies & boost the economic growth at a national level.

### PCC ALMA-MATER SONG COMPETITION

ENTER FOR A CHANCE TO WIN \$1000!  
 TOP FIVE (5) FINALISTS WILL RECEIVE \$50!

---

#### COMPETITION RULES & GUIDELINES

- 🎵 Entries must be in the form of written out music notation in English.
- 🎵 ALL ENTRIES must not exceed three (3) stanzas and no more than eighty (80) words.
- 🎵 GROUP ENTRY is welcome but NO MULTIPLE ENTRIES by the same individual or group.
- 🎵 Entry must be ORIGINAL WORDS & MELODY. An optional four-part choral setting or piano-vocal arrangement accompanied entries are acceptable.
- 🎵 Entries must be submitted to the PCC DEVELOPMENT OFFICE at DORT BUILDING by Friday, October 23, 2015. Submissions may also be sent to [tchuziet@gmail.com](mailto:tchuziet@gmail.com).

**FOR MORE INFORMATION, CONTACT THE PCC DEVELOPMENT OFFICE AT  
 (TEL): 488-2470/2471 ext. 251, 252, or 253.**

## FACULTY & STAFF PROFILE

### KEIDON KINTOL

BUSINESS ADMINISTRATION ASSOCIATE PROFESSOR

*"Success is not measured by intelligence. Rather, it is measured by passion and perseverance."*



Keidon Kintol is the Associate Professor of the Business Administration Courses at Palau Community College. He has been teaching at the college for nine (9) years. He holds a Bachelor's Degree in International Tourism from the University of Guam, a Master's Degree in Education Leadership from San Diego State University, and a Master's Degree in Public Administration from the University of Guam. In addition to teaching, Associate Professor Kintol is also a member of the Palau Community Action Agency (PCAA) where he serves as a parent representative for the organization. In his free time, Associate Professor Kintol enjoys fishing and spending time with his family at the beach.

## ALUMNI NOTES

### EMILY V. LOUGHLIN

(Class of 2014)

ASSOCIATE OF SCIENCE - NURSING



Emily V. Loughlin graduated from PCC in 2014 with an AS Degree in Nursing. She is currently continuing her studies at the National Taipei University of Education in Taiwan. Ms. Loughlin was the Valedictorian of her graduating class as well as a member of the Phi Theta Kappa International Honor Society.



Mesekiu's News

Palau Community College

P.O. Box 9 Koror, Palau 96940

**ALUMNI NOTES** showcases MOC & PCC alumni who are positive role models and contribute to the quality of life in their local communities.

If you are that Alumna/Alumnus or know someone who is, please contact the PCC Development Office at telephone numbers 488-2470/2471 (extensions 251, 252, or 253).

We would like to feature you in future *Mesekiu's News* issues.

## Newest Contributor to the PCC Endowment Fund



Palau Community College (PCC) would like to recognize its newest Endowment Fund contributor, Ms. Zenaída Orak. Ms. Orak is a Teacher for Meyuns Elementary School. Thank you, Ms. Orak, for contributing to Palau's only institution of higher learning! Your donation will help sustain the future stability and programs of Palau Community College.

### VACANCY ANNOUNCEMENT

- (1) Instructional Assistant - Construction Technology  
(Academic Affairs Division)  
salary range: \$8,991 - \$15,378 per annum
- (2) Nursing Instructor  
(Academic Affairs Division)  
salary range: \$16,010 - \$28,280 per annum
- (3) Adjunct Instructors  
(Academic Affairs Division)  
salary range: determined by class credits, educational level, and experience.
- (4) Financial Aid Counselor  
(Student Services Division)  
salary range: \$12,049 - \$20,607 per annum
- (5) Administrative Assistant  
(PCC Cooperative Research & Extension)  
salary range: \$10,929 - \$18,692 per annum
- (6) Admissions Counselor  
(Student Services Division)  
salary range: \$12,049 - \$20,607 per annum
- (7) Maintenance Technician (General)  
(Physical Plant - Administration Department)  
salary range: \$8,155 - \$13,948 per annum
- (8) Math Instructor  
(Academic Affairs Division)  
salary range: \$16,010 - \$28,280 per annum
- (9) Science Instructor  
(Academic Affairs Division)  
salary range: \$16,010 - \$28,280 per annum
- (10) Social Science/Humanities Instructor  
(Academic Affairs Division)  
salary range: \$16,010 - \$28,280 per annum
- (11) Air-Conditioning & Refrigeration Instructor  
(Academic Affairs Office)  
salary range: \$16,010 - \$28,280 per annum
- (12) Twenty-Five (25) Part-Time Tutors  
(Talent Search Office)  
salary range: \$400 - \$1,200 per annum
- (13) 2 Part-Time Math Instructors/Tutors  
(Upward Bound Office)  
salary range: \$100 - \$200 Biweekly
- (14) 2 Part-Time English Instructors/Tutors  
(Upward Bound Office)  
salary range: \$100 - \$200 Biweekly
- (15) 2 Part-Time Science Instructors/Tutors  
(Upward Bound Office)  
salary range: \$100 - \$200 Biweekly
- (16) 2 Part-Time Academic Instructors at BHS & BMS  
(Upward Bound Office)  
salary range: \$100 - \$200 Biweekly

For application forms and information, contact Harline Haruo at the PCC Human Resources Office at 488-2470/2471 extension 227, or e-mail: [hr@palau.edu](mailto:hr@palau.edu), or download forms at <http://pcc.palau.edu>.

"PCC is an Equal Opportunity Employer."

### Celebrating Birthdays

Ligaya T. Sara	October 16
Rogelio G. Santos	October 17
Marianne Ternaungil	October 18
Samantha T. Bells	October 22



**HAPPY BIRTHDAY!**

## PCC Endowment Fund

### INVEST IN THE FUTURE

OF OUR STUDENTS, OUR COLLEGE, AND OUR NATION

To SUPPORT, CONTACT US TODAY!

P.O. BOX 9 Koror, Palau 96940

Phone: 488-2470/2471 (ext. 251/253)

e-mail: [tellei@palau.edu](mailto:tellei@palau.edu)

If you want to join the Bi-Weekly Allotment Program, **contact us NOW!**

### FIND PCC ONLINE FOR MORE INFORMATION



<http://pcc.palau.edu>



Palau Community College - PCC

stamp here