

FREE!!!



Palau Community College MESEKIU'S NEWS



Friday, October 30, 2015

Weekly Newsletter

Volume 17, Issue 44

PCC Co-Ed Intramural Basketball Championship Game



Teams that participated in the PCC Intramural Basketball Game with their trophies

The championship game for the Palau Community College (PCC) Co-Ed Intramural Basketball Tournament was held on Monday, October 26, 2015. The play-off format for the championship game was one-versus-four (1 VS 4). A consolation game for the other teams was also held in a two-versus-three (2 VS 3) format. The basketball games were played at the PCC Basketball Court.

A total of seven (7) teams participated in the intramural basketball tournament: APWEDAXXZ, Ganja, YSO#01, YSO#02, Yokwe, Confirmed, and Mountainers. As a co-ed sporting event, team rosters were required to include at least fifteen (15) players with three (3) female players. All PCC students were invited to participate in the tournament.

The winning team was Confirmed with an overall standing of seven (7) wins and zero (0) losses. Second place was the Ganja Team with an overall standing of five (5) wins to two (2) losses. Third place was the Mountainers Team with an overall standing of four (4) wins to three (3) losses. Co-Ed CHAMPIONSHIP, CONTINUED ON PAGE 3

Okinawa Palau Club Visits PCC

Members of the Okinawa Palau Friendship Club visited the campus of Palau Community College (PCC) on Wednesday, October 21, 2015. Also with the group was Dr. Minoru Ueki, a prominent citizen of Palau who attended the same primary school as the club's Chairman Junichi Tanaka. The members of the Okinawa Palau Friendship Club met with PCC President Dr. Patrick U. Tellei and PCC Director of Development Tchuzie Tadao. They also visited the monument erected on the college campus that identifies the historical significance of PCC. During the Japanese Administration of the islands, the buildings that are now being used as nursing classrooms were once the classrooms of the daichi school that Dr. Ueki and Chairman Tanaka attended. The club also donated \$300 to support the PCC Endowment Fund.



PCC President Dr. Patrick U. Tellei (second from right) and PCC Director of Development Tchuzie Tadao (far left) with the members of the Okinawa Palau Friendship Club

Palau Community College is an accessible public education institution helping to meet the technical, academic, cultural, social, and economic needs of students and communities by promoting learning opportunities and developing personal excellence.

FSA Scholarship Recipients Awarded



(sitting, left to right): Sheila J. Pedro, Hayleen Renguul, Baleria Melairei, and Erickson L. Moses receiving their scholarship awards from the FSA members

The Faculty Senate Association (FSA) of Palau Community College (PCC) awarded the recipients of its 2015-2016 scholarship on Thursday, October 29, 2015. The scholarship was awarded to current PCC students who have shown a commitment as well as diligence towards success in their academic endeavors as reflected in their grade reports. The recipients of this school year's FSA Scholarship are Sheila J. Pedro (second year – sophomore), Erikson L. Moses (second year – sophomore), Heyleen Renguul (first year – freshman), and Baleria Melairei (first year – freshman). The college would like to congratulate the FSA Scholarship recipients and wish them the best in their academic endeavors this school year!

PCC-BASED SCHOLARSHIPS REMINDER TO ALL STUDENTS:

Students are reminded that the deadline for the David W. Shipper Memorial Scholarship and the Sandra S. Pierantozzi Scholarship is Friday, November 06, 2015. Please submit your application forms at the PCC Development Office no later than 5PM. For more information regarding the PCC-Based Scholarships, please contact the PCC Development Office at (tel): 488-2470/2471 ext. 252 or 253.

DEADLINE:

FRIDAY, NOVEMBER 06, 2015

Blue Bay Petroleum Donates to PCC



PCC Instructor Samantha L. Rechelluul (left) receiving a donation from Blue Bay Petroleum Incorporated Area Manager Ralph Moses (right)

Blue Bay Petroleum Incorporated recently donated \$2,000 in support of the upcoming Thanksgiving Endowment Fundraising Event of Palau Community College (PCC). The donation was presented by Blue Bay Petroleum Incorporated Area Manager for Palau Ralph Moses. The college would like to thank Blue Bay Petroleum Incorporated for its generous support!

Okinawa Palau Club Donates to PCC



PCC President Dr. Patrick U. Tellei (left) receiving a \$300 donation from Okinawa Palau Friendship Club Chairman Junichi Tanaka (right)

The Okinawa Palau Friendship Club recently donated \$300 in support of the upcoming Thanksgiving Endowment Fundraiser of Palau Community College (PCC). The donation was presented by the club's Chairman Junichi Tanaka and was officially received by PCC President Dr. Patrick U. Tellei. PCC would like to thank all of the members of the Okinawa Palau Friendship Club for their generous support.

BITS AND PIECES...

Tan Siu Lin PCC Library

Hours of Operation

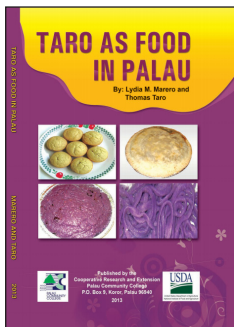
Monday to Thursday	7:30AM - 7PM
Friday	7:30AM - 5PM
Saturday	9AM - 6PM
Sunday	CLOSED

For more information, call:
488-3540

AVAILABLE TO INTERESTED READERS:

TARO AS FOOD IN PALAU

BY DR. LYDIA MARERO AND THOMAS TARO



"*Taro as Food in Palau* takes place mainly in Prague in the late 1960s and 1970s. It explores the artistic and intellectual life of Czech society from the Prague Spring of 1968 to the invasion of Czechoslovakia by the Soviet Union and three other Warsaw Pact countries and its aftermath."

Academic Calendar: Fall 2015

December 04 (F)

Last Day of Instruction

December 07-09 (M-W)

Final Examination Period

December 14 (M)

Grades Due

News/Stories Wanted

Mesekiw's News welcomes stories/articles/announcements from students, faculty, and staff. Submission deadline is Wednesday at 4:30 p.m. in hard and/or electronic copies to dilubch@gmail.com or tchuziet@gmail.com.

Articles from MOC/PCC Alumni are also welcomed.

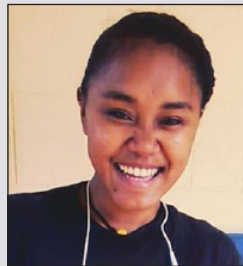
Please call 488-2470/2471 (extensions 251, 252, or 253) for more information.

Co-Ed Championship CONTINUED FROM PAGE 1

The Co-Ed Intramural Basketball Tournament is organized by the PCC Recreation Office. Co-curricular activities, such as the intramural basketball tournament, are designed to promote school spirit among the students as well as broaden their college experience. Activities under the PCC Recreation Office aim to enhance the students' leadership capabilities, promote personal development, and improve social skills.

The fifteen (15) members of the Confirmed Team are Charley Ellis, Rdiall Tellei, Medermel Yaoch, Shonty Kip Ubedei, Jimmy Wi, Gorman Mereb, Kalanny Higgins, Gorth Godwin, Odaol Adelbai, Hayden Ngiralmuut, Ketiit Kyota, Ngiratis Tellames, Cherelle Williams, Mahealani Adelbai, and Kukong Hilbert (team captain). PCC would congratulate Team Confirmed on their victory as well as the other teams for a tournament well played!

PCC Recognizes Melilt Techitong for Her Good Deed



Melilt Techitong

Palau Community College (PCC) would like to recognize one of its students, Melilt Techitong, for being a good samaritan. Ms. Techitong found money and turned it in at the Student Life Office to be claimed by its rightful owner. The college commends Ms. Techitong for her good deed! If you've recently lost money on campus, please stop by the Student Life Offices.

PALAU NATIONAL SCHOLARSHIP BOARD ANNOUNCEMENT:

Are you graduating in the fall 2015 or spring 2016?

Thinking of transferring to University of Guam, a college in Taiwan/ROC, or a college in the South Pacific?

Are you thinking of pursuing a bachelor's degree in any of the following fields: medicine, law, engineering, education or special education?

If your answer is yes, check out: *Taiwan/ROC Pacific Island Forum Scholarship* available at www.forumsec.org or contact the Palau National Scholarship Office at 488-3608. The Palau deadline for submission of application is October 30, 2015.

FACULTY & STAFF PROFILE

JERRY TAROY

ELECTRICAL TECHNOLOGY INSTRUCTOR

*"Focus on your studies and don't give up so easily.
If you find that willingness, success will follow you."*



Jerry Taroy has been an Electrical Technology Instructor at Palau Community College (PCC) for over eight (8) years. He holds a Bachelor's Degree in Industrial Education (with a focus on Electrical Technology) from Marikina Polytechnic College in the city of Marikina, Philippines. Instructor Taroy also has thirty (30) credits worth of a Masters of Arts Degree in the field of teaching and is a licensed Master Electrician as well as Professional Teacher. In addition to electrical technology courses, Instructor Taroy also teaches waste water & fresh water electrical technology and renewable solar power PV stand-alone and PV grid connection under the Maintenance Assistance Program (MAP). He enjoys surfing the web, swimming, jogging, and scuba-diving.

ALUMNI NOTES

AMORITA GODWIN

(Class of 2005)

ASSOCIATE OF SCIENCE - T&H: TOUR SERVICES



Amorita graduated in 2005 with an AS Degree in Tourism & Hospitality: Tour Services. She currently works as a Secretary for the Koror State Rangers Office.



Mesekiu's News

Palau Community College

P.O. Box 9 Koror, Palau 96940

ALUMNI NOTES showcases MOC & PCC alumni who are positive role models and contribute to the quality of life in their local communities.

If you are that Alumna/Alumnus or know someone who is, please contact the PCC Development Office at telephone numbers 488-2470/2471 (extensions 251, 252, or 253).

We would like to feature you in future *Mesekiu's News* issues.

Newest Contributor to the PCC Endowment Fund



Palau Community College (PCC) would like to recognize its newest Endowment Fund contributor, Bellarmino Fagolur. Mr. Fagolur works as a Dormitory Manager for the college. Thank you, Mr. Fagolur, for contributing to Palau's only institution of higher learning! Your donation will help sustain the future stability and programs of Palau Community College.

VACANCY ANNOUNCEMENT

- (1) Instructional Assistant - Construction Technology
(Academic Affairs Division)
salary range: \$8,991 - \$15,378 per annum
- (2) Nursing Instructor
(Academic Affairs Division)
salary range: \$16,010 - \$28,280 per annum
- (3) Adjunct Instructors
(Academic Affairs Division)
salary range: determined by class credits, educational level, and experience.
- (4) Financial Aid Counselor
(Student Services Division)
salary range: \$12,049 - \$20,607 per annum
- (5) Admissions Counselor
(Student Services Division)
salary range: \$12,049 - \$20,607 per annum
- (6) Math Instructor
(Academic Affairs Division)
salary range: \$16,010 - \$28,280 per annum
- (7) Science Instructor
(Academic Affairs Division)
salary range: \$16,010 - \$28,280 per annum
- (8) Social Science/Humanities Instructor
(Academic Affairs Division)
salary range: \$16,010 - \$28,280 per annum
- (9) Air-Conditioning & Refrigeration Instructor
(Academic Affairs Office)
salary range: \$16,010 - \$28,280 per annum
- (10) Twenty-Five (25) Part-Time Tutors
(Talent Search Office)
salary range: \$400 - \$1,200 per annum
- (11) 2 Part-Time Math Instructors/Tutors
(Upward Bound Office)
salary range: \$100 - \$200 Biweekly
- (12) 2 Part-Time English Instructors/Tutors
(Upward Bound Office)
salary range: \$100 - \$200 Biweekly
- (13) 2 Part-Time Science Instructors/Tutors
(Upward Bound Office)
salary range: \$100 - \$200 Biweekly
- (14) 2 Part-Time Academic Instructors at BHS & BMS
(Upward Bound Office)
salary range: \$100 - \$200 Biweekly

For application forms and information, contact Harline Haruo at the PCC Human Resources Office at 488-2470/2471 extension 227, or e-mail: hr@palau.edu, or download forms at <http://pcc.palau.edu>.

"PCC is an Equal Opportunity Employer."

Celebrating Birthdays

Mary M. Banphis

Tchuzie Tadao

Joel Yabes



October 31

November 01

November 02

HAPPY BIRTHDAY!

PCC Endowment Fund

INVEST IN THE FUTURE

OF OUR STUDENTS, OUR COLLEGE, AND OUR NATION

To SUPPORT, CONTACT US TODAY!

P.O. BOX 9 Koror, Palau 96940

Phone: 488-2470/2471 (ext. 251/253)

e-mail: tellei@palau.edu

If you want to join the Bi-Weekly Allotment Program, **contact us NOW!**

FIND PCC ONLINE FOR MORE INFORMATION



<http://pcc.palau.edu>



Palau Community College - PCC

stamp here