

FREE!!!



# Palau Community College MESEKIU'S NEWS



Friday, November 20, 2015

Weekly Newsletter

Volume 17, Issue 47

## PCC Develops Training Program with the BLS



(standing, left to right): PCC Dean of Academic Affairs Robert Ramarui, BLS National Surveyor Mario Retamal, PCC Dean of Continuing Education Willy Wally, MAP Coordinator Don Hanser, PCC Dean of Students Sherman Daniel (sitting, left to right): PCC President Dr. Patrick U. Tellei, BLS Director Sterlina Gabriel, and DLRI Chief Jovan E. Isaac

On Thursday, November 05, 2015 representatives from the Bureau of Land & Surveys (BLS) met with officials from Palau Community College (PCC) to begin the development of a training program that will focus on human resources capacity-building for the BLS employees. BLS is primarily responsible for providing technical & professional services in the areas of land surveying, mapping, and land resource information. By developing a training program with PCC, BLS aims to help its employees become certified land surveyors.

During their meeting, PCC and BLS agreed on a short-term training session in collaboration with the Maintenance Assistance Program (MAP). BLS will provide a list of employees who will train under MAP for skills related to land surveying.

The BSL representatives who participated in the meeting were BLS Director Sterlina Gabriel, Division of Land Resources & Information (DLRI) Chief Jovan E. Isaac, and BLS National Surveyor Mario Retamal. BUREAU OF LAND & SURVEY, CONTINUED ON PAGE 3

### ASPCC Special Election

The Associated Students of Palau Community College (ASPCC) will hold a special election to fill the vacant position of ASPCC President on Wednesday, December 02, 2015. Interested students must file for candidate registration at the Office of the Dean of Students no later than Thursday, November 26, 2015 at 4:30PM.

#### CANDIDATE QUALIFICATIONS:

- 1) Student must be Full-Time (12 Credits) with a maintained Cumulative Grade Point Average of 2.00 or Higher
- 2) Student must have no record of felony or criminal offence
- 3) Student must be a second-year (sophomore) with a minimum of thirty (30) credits toward a current major

Candidates are also required to submit a petition form with the signatures of at least twenty-five (25) classified students which must be submitted to the Office of the Dean of Students on or before Thursday, November 26, 2015 at 4:30PM.

ASPCC consists of four (4) officers and ten (10) senators who are elected annually by the students to represent their interests in the student government.

## SPRING SEMESTER 2016 (16 Weeks)

### **January 04-06 (M-W)**

Placement Testing

### **January 05 (T)**

New Student Orientation

### **January 06-08 (W-F)**

Academic Advising & Registration

### **January 11 (M)**

Late Registration and the **First Day of Instruction**

### **January 11-13 (M-W)**

Credit by Examination

### **January 11-15 (M-F)**

Add & Drop Period

### **February 29 - March 09 (M-F)**

Mid-Term Period

### **March 16-18 (W-F)**

Students' Spring Break (Youth Day is on March 15)

### **March 24 (TH)**

Last Day for All Withdrawals

### **March 28 (M)**

Summer 2016 Pre-Registration Begins

### **April 01 (F)**

PCC Charter Day Celebration (observed on April 02)

### **April 29 (F)**

Last Day of Instruction

### **May 02-04 (M-W)**

Final Examination Period

### **May 13 (F)**

PCC Commencement Exercises

## PRR Donates Certificate as Prize



*PCC student Sky F. Meltel (right) receiving the donation from PRR Manager Masayuki Kawaguchi (left)*

In support of the upcoming Thanksgiving Fundraiser of Palau Community College (PCC), the Palau Royal Resort (PRR) donated a Complimentary Certificate for a Dinner for Two at Waves Restaurant. The donation was received on behalf of the college by PCC student Sky F. Meltel. It was presented by PRR Manager Masayuki Kawaguchi. PCC thanks PRR for its continued support!

## IMPAC Tours Donates \$200 to PCC



*PCC student Sky F. Meltel (left) receiving the donation from IMPAC Tours Sales Manager Bodo Skebong*

On Thursday, November 19, 2015 the Imperial Palau Corporation (IMPAC) Tours donated \$200 in support of the upcoming Thanksgiving Fundraiser of Palau Community College (PCC). The donation was presented by IMPAC Tours Sales Manager Bodo Skebong and received on behalf of the college by PCC student Sky F. Meltel. PCC thanks IMPAC Tours for its generous support!

## Lius Giftshop & Cafe Donates to PCC



*PCC student Mark N. Polloi (right) receiving the Lius Giftshop & Cafe donation on behalf of the college*

The Lius Giftshop & Cafe recently donated \$100 in support of the upcoming Thanksgiving Endowment Fundraiser of Palau Community College (PCC). The donation was received on behalf of the college by PCC student Mark N. Polloi. PCC would like to thank Lius Giftshop & Cafe for its generous support!



## **BITS AND PIECES...**

### **Tan Siu Lin PCC Library**

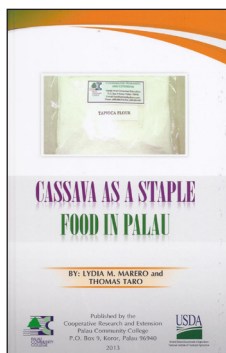
#### **Hours of Operation**

**Monday to Thursday** 7:30<sup>AM</sup> - 7<sup>PM</sup>  
**Friday** 7:30<sup>AM</sup> - 5<sup>PM</sup>  
**Saturday** 9<sup>AM</sup> - 6<sup>PM</sup>  
**Sunday** **CLOSED**

For more information, call:  
488-3540

#### **AVAILABLE TO INTERESTED READERS:**

**CASSAVA AS A STAPLE FOOD IN PALAU**  
BY DR. LYDIA MARERO AND THOMAS TARO



"Cassava as a Staple Food in Palau provides recipes derived from locally cassava, especially for value-added processed food products. Development of cassava food products will ensure a stable supply that will provide food security in Palau."

### **Academic Calendar: Fall 2015**

**December 04 (F)**  
Last Day of Instruction

**December 07-09 (M-W)**  
Final Examination Period

**December 14 (M)**  
Grades Due

### **News/Stories Wanted**

*Mesekiu's News* welcomes stories/articles/announcements from students, faculty, and staff. Submission deadline is Wednesday at 4:30 p.m. in hard and/or electronic copies to [tchuziet@palau.edu](mailto:tchuziet@palau.edu) or [tchuziet@gmail.com](mailto:tchuziet@gmail.com).

Articles from MOC/PCC Alumni are also welcomed.

Please call 488-2470/2471 (extensions 251, 252, or 253) for more information.

## **Bureau of Land & Survey** CONTINUED FROM PAGE 1

They met with PCC President Dr. Patrick U. Tellei, Dean of Academic Affairs Robert Ramarui, Dean of Continuing Education (CE) William Wally, MAP Coordinator Don Hanser, and Dean of Students Sherman Daniel.

### **Hanpa Donates \$1000 in Support of PCC Fundraiser**



*PCC student Mark N. Polloi (left) receiving Hanpa donation*

On Friday, November 20, 2015 Hanpa donated \$1,000 in support of the upcoming Thanksgiving Endowment Fundraiser of Palau Community College (PCC). It was received on behalf of the college by PCC student Mark Polloi. The college would like to thank Hanpa for its very generous contribution and for its support over the years!

### **Palau Coffee Berry Donates Five (5) Gift Certificates**

In support of the upcoming Thanksgiving Fundraiser of Palau Community College (PCC), the Palau Coffee Berry donated five (5) \$10 Gift Certificates as prizes for the raffle drawing. The donation was received on behalf of the college by PCC student Mark N. Polloi. PCC would like to thank Palau Coffee Berry for its support!



*PCC student Mark N. Polloi (right) receiving Coffee Berry donation*

## **2015 PCC THANKSGIVING ENDOWMENT FUNDRAISER!**



"Palau Community College is an accessible public educational institution helping to meet the technical, academic, cultural, social, and economic needs of students and communities by promoting learning opportunities and developing personal excellence."

#### **2015 THANKSGIVING ENDOWMENT FUNDRAISING EVENT**

##### **An Annual Palau Community College (PCC) Event**

The Endowment Fund is a critical component of the Fifteen-Year (15) Institutional Master Plan (2009-2020) of Palau Community College. The goal is to raise \$10,000,000 by 2020. Palau Community College will ensure that Palau's only institution of higher learning continues to provide post-secondary education and career & technical training that meets the needs of Palau as well as the Micronesian region.

The National Government of Palau, in support of the PCC Endowment Fund, enacted RPPL 4-36 stating that financial contributions to PCC by individual employees are refundable up to 10% of the taxes paid by the employee in that tax year. This has enabled the College to garner the support of hundreds of employees in the public and private sector to help build the endowment fund.

"Show your support by purchasing a \$10 Raffle Ticket! Help Palau's only institution of higher learning continue to provide the much needed academic programs & training that will help sustain the future of our islands."

**date: Wednesday, November 25, 2015**  
**place: Mesekiu Bai - PCC Courtyard**  
**time: 11AM - 5PM**

Contact the PCC Development Office at (tel): 488-2470/2471 ext. 251, 252, or 253 for more information regarding the upcoming 2015 Palau Community College (PCC) Thanksgiving Endowment Fundraiser.

## PCC CAMPUS PROFILES

### ELISHA P. FAKATOU

ASPCC - SOPHOMORE REPRESENTATIVE

*"Sometimes, the people who make a difference are not the ones with the credentials, but the ones with the concern." - Max Lucado*



Elisha P. Fakatou is a Sophomore Representative member of the Associated Students of Palau Community College (ASPCC). He was Valedictorian of the Emmaus High School Graduating Class of 2012. After spending a year in Kirkland, Washington as a Communications (with an emphasis on Film Studies) Major, Mr. Fakatou enrolled at PCC where he is currently studying under the Liberal Arts Program. As a student leader, Mr. Fakatou would like to leave PCC in a better state than when he entered. He wants to inspire PCC students to be interested in school affairs, especially those that effect their studies. His interests include public speaking, debates, student leadership, and SpokenWord Poetry.

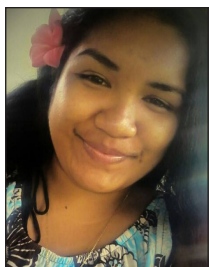
## ALUMNI NOTES

### MELVIRA K. KAZUMA

(Class of 2015)

ASSOCIATE OF APPLIED SCIENCE - OFFICE ADMINISTRATION

*"The sky is the limit so shoot for the moon! If you miss, you'll just land with the stars."*



Melvira graduated with an AAS Degree in Office Administration. She currently works as an Administrative Assistant I for the Bureau of Tourism under the Ministry of Natural Resources, Environment & Tourism. Ms. Kazuma graduated as a member of the Phi Theta Kappa International Honors Society. She was also a recipient of the Outstanding Student Award.



**Mesekiu's News**

Palau Community College

P.O. Box 9 Koror, Palau 96940

**ALUMNI NOTES** showcases MOC & PCC alumni who are positive role models and contribute to the quality of life in their local communities.

If you are that Alumna/Alumnus or know someone who is, please contact the PCC Development Office at telephone numbers 488-2470/2471 (extensions 251, 252, or 253).

We would like to feature you in future *Mesekiu's News* issues.

## Associated Students of Palau Community College (ASPCC)

SPIRIT WEEK

from November 23-25, 2015

### PIE DAY



Monday  
November 23, 2015

Frustrated with your final examinations? Disappointment by your final grade for a test? ASPCC offers you temporary relief: on Pie Day, each ASPCC member will have a donation box set up. Students are invited to donate at least a dollar to choose which ASPCC member will be pied. The ASPCC member with the most donations will be the lucky recipient!

Attend your classes as your favorite superhero, movie character, or a random mixture of all your favorite things. Enjoy a day where you can be anything or anyone else!

### COSTUME DAY



Tuesday  
November 24, 2015

### FORMAL DAY



Wednesday  
November 25, 2015

On Formal Day, ASPCC invites the student body to dress their best! Wear your suit & tie or your little black dress with heels. ASPCC will also be hosting a Thanksgiving Dinner for the students on the night of Wednesday, November 25, 2015. All are welcomed to dress their best and enjoy the atmosphere.

### Celebrating Birthdays

Clement Kazuma



November 23

**HAPPY BIRTHDAY!**

### VACANCY ANNOUNCEMENT

- (1) Instructional Assistant - Construction Technology  
(Academic Affairs Division)  
salary range: \$8,991 - \$15,378 per annum
- (2) Nursing Instructor  
(Academic Affairs Division)  
salary range: \$16,010 - \$28,280 per annum
- (3) Adjunct Instructors  
(Academic Affairs Division)  
salary range: determined by class credits, educational level, and experience.
- (4) Admissions Counselor  
(Student Services Division)  
salary range: \$12,049 - \$20,607 per annum
- (5) Math Instructor  
(Academic Affairs Division)  
salary range: \$16,010 - \$28,280 per annum
- (6) Science Instructor  
(Academic Affairs Division)  
salary range: \$16,010 - \$28,280 per annum
- (7) Social Science/Humanities Instructor  
(Academic Affairs Division)  
salary range: \$16,010 - \$28,280 per annum
- (8) Air-Conditioning & Refrigeration Instructor  
(Academic Affairs Office)  
salary range: \$16,010 - \$28,280 per annum

For application forms and information, contact Harline Haruo at the PCC Human Resources Office at 488-2470/2471 extension 227, or e-mail: [hr@palau.edu](mailto:hr@palau.edu), or download forms at <http://pcc.palau.edu>.

**"PCC is an Equal Opportunity Employer."**

## PCC Endowment Fund

### INVEST IN THE FUTURE

OF OUR STUDENTS, OUR COLLEGE, AND OUR NATION

To SUPPORT, CONTACT US TODAY!

P.O. BOX 9 Koror, Palau 96940

Phone: 488-2470/2471 (ext. 251/253)

e-mail: [tellei@palau.edu](mailto:tellei@palau.edu)

If you want to join the Bi-Weekly Allotment Program, contact us NOW!

### FIND PCC ONLINE FOR MORE INFORMATION



<http://pcc.palau.edu>



Palau Community College - PCC

stamp here