

FREE!!!

# Palau Community College



# MESEKIU'S NEWS



Friday, February 05, 2016

Weekly Newsletter

Volume 18, Issue 06

## Newly Elected ASPCC President Sworn-In



*New ASPCC President Spencer O'Dell (left) being sworn into office by PCC Dean of Students Sherman Daniel (right)*

On Friday, January 29, 2016 the special election for the vacant position of President in the Associated Students of Palau Community College (ASPCC) was held at the Mesekiu Bai. The special election was conducted pursuant to the ASPCC Resolution 01-2015.

Only one (1) student filed a nomination request for the ballot: Mr. Spencer O'Dell, a full-time student from Palau currently enrolled in the Small Engine & Outboard Marine Technology Program. He won the election with seventy-nine percent (79%) of the total votes counted. The remaining votes were split amongst ten (10) other candidates.

Mr. O'Dell was sworn into office on Wednesday, February 03, 2016. His oath was administered by PCC Dean of Students Sherman Daniel. The ceremony took place at the Statue of Prince Lebuu on the college campus. ASPCC PRESIDENT, CONTINUED ON PAGE 3

### Preparation for Accreditation Visit

The Palau Community College (PCC) Accreditation Steering Committee (ASC) held a meeting at the Conference Room of the Tan Siu Lin Library on Friday, January 29, 2016. In the meeting, Accreditation Liaison Officer (ALO) Deikola Olikong informed the ASC of the upcoming accreditation visit slated for February 29, 2016 to March 03, 2016. ASC members were tasked to have their respective departments, divisions, offices, and programs ready for the visiting team. The Accrediting Commission for Community and Junior Colleges (ACCJC) visiting team is comprised of members from the colleges in California and the Republic of the Marshall Islands (RMI). The chair and co-chair of the team will be arriving in Palau on February 26, 2016 while the nine (9) other members will be arriving the following day. VISIT, CONTINUED ON PAGE 3



*ALO Deikola Olikong (left) meeting with members of the Steering Committee*

*Palau Community College is an accessible public educational institution helping to meet the technical, academic, cultural, social, and economic needs of students and communities by promoting learning opportunities and developing personal excellence.*

## PCC Bids Farewell to Dr. Marero

On Tuesday, February 02, 2016 Palau Community College (PCC) held a farewell lunch for Cooperative Research & Extension (CRE) employee Dr. Lydia Marero. Dr. Marero has been a Researcher & Food Technologist for the CRE Department of the college for fifteen (15) years. She retired from her position this year.

In her time at PCC, Dr. Marero taught six-hundred (600) participants in various food technology classes organized for the local communities. She also completed five (5) projects for the United States Department of Agriculture (USDA) that were funded by the Hatch Act. The projects were related to local food production and development in Palau. She also wrote six (6) books, along with PCC-CRE Vice President Thomas Taro, about projects related to local food projects in Palau.

Dr. Marero holds a Post-Doctorate Degree in Food Science from the Seoul National University in South Korea. She also holds a Doctor of Philosophy (Ph.D.) Degree in Food Science from Ochanomizu Women's University in Tokyo, Japan. Dr. Marero graduated from the University of the Philippines at Los Baños with a Master's Degree in Food Science. She received her Bachelor's of Science Degree in Food Technology from De La Salle Araneta University also in the Philippines.

The college would like to recognize Dr. Marero for the years she has dedicated to completing projects and conducting research with the college. Her contributions are greatly appreciated and we all hope for her the best. Dr. Marero was a great asset to the local community of Palau.



(left to right): PCC Vice President Jay Olegeriil, CRE Research Assistant Dalton Thomas, CRE Food Technologist Dr. Aurora Del Resario, CRE Retiree Dr. Lydia Marero, PCC President Dr. Patrick U. Tellei, and PCC-CRE Vice President Thomas Taro

## Ministry of Health Workshop at PCC



*The Ministry of Health Workshop held at the PCC Assembly Hall*

The Health Planning Policy Preparedness & Research Development (HPPPRD) Division of the Palau Ministry of Health (MOH) hosted a four-day workshop at the Assembly Hall of Palau Community College (PCC) from Monday, February 01, 2016 to Thursday, February 04, 2016. The workshop focused on providing local emergency response teams with the necessary training regarding the incident command system. The incident command system is a standardized approach to the command, control, and coordination of emergency response providing a common hierarchy within which responders from multiple agencies can follow to achieve effectiveness.

The training sessions held at the PCC Assembly Hall covered two (2) subjects. The first was ICS-300: "Intermediate ICS for Expanding Incidents" which providing useful resources to personnel who require advanced knowledge and application of the command system. MOH, CONTINUED ON PAGE 3

## DID YOU KNOW...?



That the first "GATORADE SHOWER" was poured on Coach Bill Parcells in 1984 after the New York Giants defeated the Washington Red Skins.

**WATCH THE SUPER BOWL 50  
THIS MONDAY (FEBRUARY 08, 2016)**

# BITS AND PIECES...

## Tan Siu Lin PCC Library

### Hours of Operation

Monday to Thursday	7:30 <sup>AM</sup> - 7 <sup>PM</sup>
Friday	7:30 <sup>AM</sup> - 5 <sup>PM</sup>
Saturday	9 <sup>AM</sup> - 6 <sup>PM</sup>
Sunday	CLOSED

For more information, call:  
488-3540

### AVAILABLE TO INTERESTED READERS:

#### CYCLE WORLD MAGAZINE



"Cycle World Magazine is a motorcycling magazine in the United States. It was founded in 1962 by Joe Parkhurst. As of 2001 Cycle World Magazine was the largest motorcycling magazine in the world. The magazine is headquartered in Newport Beach, California. Regular contributors include Peter Egan. Occasional contributors have included Hunter S. Thompson."

### Academic Calendar: Spring 2016

#### February 19 (F)

Last Day for Removal of Grades

#### February 29 - March 04 (M-F)

Mid-Term Examination Period

#### March 16-18 (W-F)

Students' Spring Break

### News/Stories Wanted

*Mesekiw's News* welcomes stories/articles/announcements from students, faculty, and staff. Submission deadline is Wednesday at 4:30 p.m. in hard and/or electronic copies to [tchuziet@palau.edu](mailto:tchuziet@palau.edu) or [tchuziet@gmail.com](mailto:tchuziet@gmail.com).

Articles from MOC/PCC Alumni are also welcomed.

Please call 488-2470/2471 (extensions 251, 252, or 253) for more information.

## ASPCC President CONTINUED FROM PAGE 1

As student leader, ASPCC President Mr. O'Dell plans to promote school spirit by organizing events that allow for more social meetings between the students. By encouraging interactions between students, especially between students from the different island nations, Mr. O'Dell hopes that the student body will form a stronger bond.

## Visit CONTINUED FROM PAGE 1

ALO Olikong also encouraged the ASC members to update the 15-Year Institutional Master Plan report card during the meeting. In addition, the committee members discussed the Institutional Set Standards for Student Achievement (ISSSA). ISSSA are required by the United States Department of Education and are used to assess a learning institution's efforts in regards to student achievement as well as success in their chosen fields of studies.

Other topics discussed during the ACJ meeting ws the Institutional Learning Outcomes (ILOs), the Unifying Principles, and the Institutional Assessment & Evaluation Process (FAMED Process). Each department, office, units, programs, and divisions of the college provided reviews regarding their respective mission statements and objectives.

## MOH CONTINUED FROM PAGE 2

The second subject was ICS-400: "Advanced ICS" which provided training and resources for personnel who require advanced application of the command system. The workshop also provided an update about the command system in Palau as well as information regarding shelters, venues, and other subjects in relation to states of national crisis.

## Newest Contributors to the PCC Endowment Fund



Palau Community College (PCC) would like to recognize its newest Endowment Fund contributor, Elliot Udoi. Mr. Udoi is the Claims & Benefit Manager for the Palau Civil Service Pension Plan. Thank you, Mr. Udoi, for your contribution to Palau's only institution of higher learning! Your donation will help sustain the future stability and programs of Palau Community College.

Palau Community College (PCC) would like to recognize its newest Endowment Fund contributor, Kazuki Topps Sungino. Mr. Sungino is the Sports Coordinator for the Palau National Olympics Committee (PNOC). Thank you for your contribution to Palau's only institution of higher learning! Your donation will help sustain the future stability and programs of Palau Community College.



## PCC CAMPUS PROFILES

### JULIANNE BRECHTEFELD

ASPCC PRESIDENT-ELECT (VICE PRESIDENT)

*"Aim high and reach your goals."*



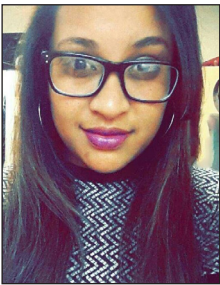
Ms. Julianne Brechtefeld is from the Republic of the Marshall Islands (RMI). She is the current President-Elect (Vice President) of the Associated Students of Palau Community College (ASPCC). Currently, Ms. Brechtefeld is enrolled as a full-time student under the Automotive Mechanics Program at the college. As a student leader, she wants to help students maintain a balance between their social lives and their academic priorities. Ms. Brechtefeld is a graduate of the Baptist Christian Academy in Majuro, Marshall Islands where she served as Vice President during her senior year. Her hobbies include sports activities such as basketball, volleyball, rugby, track & field, and working out at the gym.

## ALUMNI NOTES

### ANTONI K. SOALABLAI

(Class of 2015)

ASSOCIATE OF ARTS - LIBERAL ARTS



Ms. Soalablai graduated from PCC with an AA Degree in Liberal Arts. She is currently enrolled at the Ming Chuan University in the Republic of China - Taiwan where she is studying Journalism & Mass Communication. As a student, she served as the President of the Palau Student Organization. She also graduated as a member of the Phi Theta Kappa International Honors Society.



Mesekiu's News

Palau Community College

P.O. Box 9 Koror, Palau 96940

**ALUMNI NOTES** showcases MOC & PCC alumni who are positive role models and contribute to the quality of life in their local communities.

If you are that Alumna/Alumnus or know someone who is, please contact the PCC Development Office at telephone numbers 488-2470/2471 (extensions 251, 252, or 253).

We would like to feature you in future *Mesekiu's News* issues.

## TAN SIU LIN PCC LIBRARY NOTICE:

The Tan Siu Lin Palau Community College (PCC) Library would like to inform the public that it will be closed on Saturday, February 20, 2016 due to a general clean-up & face-lift of the building. It will resume its usual hours after the clean-up has been completed.

## INTRAMURAL MIXTURE

The Recreation Office of Palau Community College (PCC) will be hosting an Intramural Mixture Volleyball Tournament this Spring 2016 Semester. Games will be held during the weekends and the tournament is scheduled to start on February 06, 2016 (Saturday). Game time will be set during the technical meeting. All students interested in joining the Volleyball Tournament are welcomed to submit their team rosters to the PCC Recreation Office between the hours of 12PM - 8:45PM. Team rosters should have at least 8 Males and 8 Females (total of 16 Players but not to exceed 20 players).

## PCC VOLLEYBALL TOURNAMENT



## Celebrating Birthdays

David Salapwa	February 06
Danielle Dachelbai	February 07
Ploria W. Asito	February 09
Jay Olegeriil	February 10

**HAPPY BIRTHDAY!**

## PCC Endowment Fund

### INVEST IN THE FUTURE

OF OUR STUDENTS, OUR COLLEGE, AND OUR NATION

To SUPPORT, CONTACT US TODAY!

P.O. BOX 9 Koror, Palau 96940

Phone: 488-2470/2471 (ext. 251/253)

e-mail: [tellei@palau.edu](mailto:tellei@palau.edu)

If you want to join the Bi-Weekly Allotment Program, contact us NOW!

## VACANCY ANNOUNCEMENT

- (1) Instructional Assistant - Construction Technology (Academic Affairs Division) salary range: \$8,991 - \$15,378 per annum
- (2) Air-Conditioning & Refrigeration Instructor (Academic Affairs Office) salary range: \$16,010 - \$28,280 per annum

For application forms and information, contact Harline Haruo at the PCC Human Resources Office at 488-2470/2471 extension 227, or e-mail: [hr@palau.edu](mailto:hr@palau.edu), or download forms at <http://pcc.palau.edu>.

**"PCC is an Equal Opportunity Employer."**

## FIND PCC ONLINE FOR MORE INFORMATION

<http://pcc.palau.edu>

Palau Community College - PCC

stamp here