

FREE!!!

Palau Community College



MESEKIU'S NEWS



Friday, February 19, 2016

Weekly Newsletter

Volume 18, Issue 08

ACCJC-WASC Team Campus Visit

contributed by Accreditation Liaison Officer (ALO) Deikola Olikong



Dr. Melinda Nish, Team Chair
Southwestern College



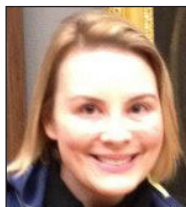
Lillian E. Leopold
Southwestern College



Dr. Theresa Koroivulaono
College of the Marshall Islands



Dr. Laurie Huffman
Los Medanos College



Dr. Sarah McLemore
Glendale Community College



Dr. Mary T. P. Hattori
University of Hawaii - Manoa



Dr. Arvid Spor
Citrus College



Ms. Bernadette Howard
University of Hawaii



Mr. Tim Karas
College of Alameda



Dr. Ken Stoppenbrink
West Hills Community College District



Dr. Duncan Sutton
Salvation Army College for Officer Training at Cresmont

Pristine Campus Campaign

The Faculty Senate Association (FSA), the Classified Staff Organization (CSO), and the Associated Students of Palau Community College (ASPCC) are sponsoring the Pristine Campus Campaign in an effort to promote the maintenance and continued cleanliness of the college campus. The campaign is separated into three (3) parts: the logo/slogan contest, the candid camera, and the campus-wide police call.

The logo/slogan contest will be held in March. This contest invites interested individuals to design a logo/slogan that will be used to promote a litter-free campus. There will be three (3) prizes: first place will receive \$100, second place will receive \$75, and third place will receive \$50. In addition, each winning entry will be made into a sign and displayed around campus. Entries must have an anti-litter theme relevant to PCC. Submission are due March 30, 2016. All PCC students are eligible to join.

The Candid Camera is an event that features candid pictures of students throwing trash in binds around campus. CAMPAIGN, CONTINUED ON PAGE 4

The External Evaluation Visiting Team appointed by the Accrediting Commission for Community and Junior Colleges, Western Association of Schools and Colleges (ACCJC-WASC) will be arriving in Palau on the last weekend of February to conduct a campus visit at Palau Community College (PCC). ACCJC-WASC, CONTINUED ON PAGE 3

Palau Community College is an accessible public educational institution helping to meet the technical, academic, cultural, social, and economic needs of students and communities by promoting learning opportunities and developing personal excellence.

ASPCC Hosts Valentine's Day Bash



Palau Student Organization Valentine's Day Bash Performance

The Associated Students of Palau Community College (ASPCC) hosted a Valentine's Day Bash on Friday, February 12, 2016. Featured at the event were dance performances by the student organizations and a live band. Participants of the event were entered in a raffle drawing with prizes that included Valentine's Day gifts and airtime. The ASPCC Valentine's Day Bash was an opportunity for the students to socialize outside of an academic setting.

BEEA & BFSCA Conference at PCC

The Belau Employers & Educators Alliance (BEEA), the Belau Family School & Community Association (BFSCA), and the Ministry of Education (MOE) held a joint general membership meeting at the Cafeteria of Palau Community College (PCC) on Wednesday, February 17, 2016. Opening the meeting was the remarks of Minister of Education Sinton Soalablai. He was followed by Keynote Speaker Aric Nakamura, the Overall Operations Manager of the Belau Transfer & Terminal Group of Companies. Mr. Nakamura spoke about the Palauan dream versus the dream of others. He provided an example of how focusing on the youth of Palau could lead to a prosperous future for the country. Mr. Nakamura was followed by Workforce Innovation and Opportunity Act (WIOA) Executive Director Ms. Josephine Ulengchong who discussed her program and the career paths it offers the youth of Palau. Other presentations were made by BEEA President Mr. Kazuki "Topps" Sungino and PCC Dean of Academic Affairs Robert Ramarui. Dean Ramarui discussed the implementation of the RPPL 9-22: The Skilled Palauan Workforce Investment Act. The meeting concluded with the closing remarks of BFSCA President John Kintaro, Jr.

StratoClimate Weather Balloon Launch

On February 17, 2016 a StratoClimate Project weather balloon was released at the Palau National Track & Field. Invited to witness the launching were Palau President Tommy E. Remengesau Jr., Minister of State Billy G. Kuartei, and Airai State Delegate Frank Kyota. The weather balloon is designed to collect data that will help the scientists analyze the atmospheric composition of the tropical West Pacific. Studies show that the air around Palau is the cleanest in the world making it an ideal location for conducting studies on how climate and air from the region affect the composition of the stratosphere globally. Data collected by the Palau StratoClimate Atmospheric Observatory will be used to improve our overall understanding of climate change.



President Tommy E. Remengesau Jr. releasing the weather balloon

ASPCC Holds Rock Island Retreat



PCC students enjoying the retreat at Ngchus Island

On Sunday, February 14, 2016 the Associated Students of Palau Community College (ASPCC) held a retreat at Ngchus Island. ASPCC President Spencer O'Dell, Kosrae Student Organization (KSO) President William Waguk, and Pohnpei Student Organization (PSO) President Anster Dewey along with other PCC students enjoyed a day of swimming & barbecuing. Student leaders also discussed events being planned for the rest for the semester.

BITS AND PIECES...

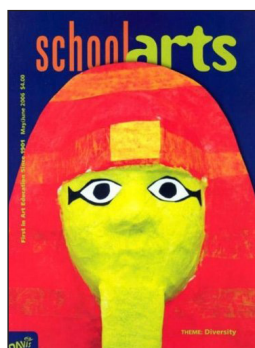
Tan Siu Lin PCC Library

Hours of Operation

Monday to Thursday	7:30 ^{AM} - 7 ^{PM}
Friday	7:30 ^{AM} - 5 ^{PM}
Saturday	9 ^{AM} - 6 ^{PM}
Sunday	CLOSED

For more information, call:
488-3540

AVAILABLE TO INTERESTED READERS: SCHOOLARTS MAGAZINE



"SchoolArts Magazine is a national art education magazine committed to promoting excellence, advocacy, and professional support for educators in the visual arts."

Academic Calendar: Spring 2016

February 19 (F)

Last Day for Removal of Grades

February 29 - March 04 (M-F)

Mid-Term Examination Period

March 16-18 (W-F)

Students' Spring Break

News/Stories Wanted

Mesekiw's News welcomes stories/articles/announcements from students, faculty, and staff. Submission deadline is Wednesday at 4:30 p.m. in hard and/or electronic copies to tchuziet@palau.edu or tchuziet@gmail.com.

Articles from MOC/PCC Alumni are also welcomed.

Please call 488-2470/2471 (extensions 251, 252, or 253) for more information.

ACCJC-WASC CONTINUED FROM PAGE 1

The team of eleven (11) members is chaired by Dr. Melinda Nish, Superintendent/President of the Southwestern College in Chula Vista, California. Members will visit the college to validate its Institutional Self-Evaluation Report (ISER) that was submitted by the college to the accrediting commission on December 24, 2015. Campus visits by the ACCJC appointed team is a requirement within the self-evaluation process of ACCJC-WASC member institutions. During the campus visit, members of the external evaluation visiting team will meet with faculty, staff, students, and administrators; review college documentations and student data; and conduct classroom observations as well as visit the different programs & service areas.

Meetings, classroom observations, and visits to different programs and service areas of the college may be scheduled prior to the team's arrival or will be requested when the team arrives on campus. All college employees are requested to be on campus during the week of February 29, 2016 to March 03, 2016. The team will have an opportunity to visit the famous Southern Lagoon of Palau on Friday, March 04, 2016 before departing on Saturday, March 05, 2016.

PCC takes this opportunity to thank everyone for providing support and assistance during the writing of the college ISER, especially with lining up the evidence. Let us continue to work together to stay and remain an accredited institution.

OPEN ENROLLMENT FOR GROUP HEALTH INSURANCE

Enrollment is now open from February 05, 2016 to February 25, 2016 to any Palau Community College (PCC) Employee who is interested in enrolling, adding, or deleting dependents on their Calvo's Insurance Select Care Plan.

CALVO'S SELECT CAR GROUP - HEALTH INSURANCE RATES

Monthly Rate (Single)	Class Type (Single)	Percentage Split	12 Months	Bi-Weekly
\$113.00	Employer (60%)	\$67.80	\$813.60	\$31.29
	Employee (40%)	\$45.20	\$542.40	\$20.86
Monthly Rate (Couple)	Class Type (Couple)	Percentage Split	12 Months	Bi-Weekly
\$226.00	Employer (60%)	\$135.60	\$1,627.20	\$62.59
	Employee (40%)	\$90.40	\$1,084.80	\$41.72
Monthly Rate (Family)	Class Type (Family)	Percentage Split	12 Months	Bi-Weekly
\$362.00	Employer (60%)	\$217.20	\$2,606.40	\$100.25
	Employee (40%)	\$144.80	\$1,737.60	\$66.83

Please call visit the PCC Human Resources Office to fill the necessary forms. Or you may call (tel): 488-2470/2471 ext. 227 for additional information.

PCC CAMPUS PROFILES

LIGAYA T. SARA

PCC INSTITUTIONAL RESEARCH ANALYST

"Make education a top priority."



Ligaya Sara has been working as an Institutional Research Analyst for Palau Community College (PCC) since 2009. Her duties include providing timely & accurate information, data analysis, and assessment support to administrative and academic units. She also develops the college institutional factbook, prepares the fifteen-year master plan report card, and provides data for the federally mandated reports to the Integrated Post-Secondary Education Data System (IPEDS). Ms. Sara holds a bachelor's degree in Statistics from the University of South Eastern Philippines. She is a member of the Association for Institutional Research (AIR) and the McREL Palau Research Alliance. Her hobbies include reading books, watching movies, travelling, and swimming.

ALUMNI NOTES

KE'ALA N. GIBBONS

(Class of 2015)

ASSOCIATE OF SCIENCE - BUSINESS ADMINISTRATION



Ke'ala graduated from PCC with an AS Degree in Business Administration. She currently works for the Surangel & Sons Company.

Campaign CONTINUED FROM PAGE 1

If a photo of you throwing away trash is taken and printed in the *Mesekiu's News* during the months of February, March, and April you will win \$25. Participate by throwing away your trash!

Lastly all students, faculty, and staff members will be invited to participate in a campus wide clean-up. Lunch will be served after the campus clean-up session has been conducted.

This three-month campaign is designed to raise awareness and to promote a litter-free campus. Please spread the word and let us all join together in the effort to keep our campus clean!

TAN SIU LIN PCC LIBRARY NOTICE:

The Tan Siu Lin Palau Community College (PCC) Library would like to inform the public that it will be closed on Saturday, February 20, 2016 due to a general clean-up & face-lift of the building.

Celebrating Birthdays

Nena H. George	February 20
O'Hara Skebong	February 22
Stephanie J. Minor	February 24
Connie Madrangchar	February 25



HAPPY BIRTHDAY!

VACANCY ANNOUNCEMENT

- (1) Instructional Assistant - Construction Technology
(Academic Affairs Division)
salary range: \$8,991 - \$15,378 per annum
- (2) Air-Conditioning & Refrigeration Instructor
(Academic Affairs Office)
salary range: \$16,010 - \$28,280 per annum

For application forms and information, contact Harline Haruo at the PCC Human Resources Office at 488-2470/2471 extension 227, or e-mail: hr@palau.edu, or download forms at <http://pcc.palau.edu>.

"PCC is an Equal Opportunity Employer."

PCC Endowment Fund

INVEST IN THE FUTURE

OF OUR STUDENTS, OUR COLLEGE, AND OUR NATION

TO SUPPORT, CONTACT US TODAY!

P.O. BOX 9 Koror, Palau 96940

Phone: 488-2470/2471 (ext. 251/253)

e-mail: tellei@palau.edu

If you want to join the Bi-Weekly Allotment Program, contact us NOW!

FIND PCC ONLINE FOR MORE INFORMATION



<http://pcc.palau.edu>



Palau Community College - PCC



Mesekiu's News

Palau Community College

P.O. Box 9 Koror, Palau 96940

ALUMNI NOTES showcases MOC & PCC alumni who are positive role models and contribute to the quality of life in their local communities.

If you are that Alumna/Alumnus or know someone who is, please contact the PCC Development Office at telephone numbers 488-2470/2471 (extensions 251, 252, or 253).

We would like to feature you in future *Mesekiu's News* issues.

stamp here