

FREE!!!

Palau Community College



MESEKIU'S NEWS



Friday, March 11, 2016

Weekly Newsletter

Volume 18, Issue 11

Recipients of the 2015-2016 PCC-Based Scholarships



Erikson E. Moses
Sandra S. Pierantozzi Scholarship



Shenna D. Sengebau
Sandra S. Pierantozzi Scholarship



Jedidah E. Masahiro
Sandra S. Pierantozzi Scholarship



Turang D. Rengiil
Prince Lebuu Scholarship



Harriet D. Madrangchar
Prince Lebuu Scholarship



Sheila J. Pedro
Terry Ngirmang Nursing Scholarship



Wade E. Kitalong
David Shipper Memorial Scholarship

Palau Community College (PCC) would like to recognize the following students who are the recipients of its 2015-2016 PCC-Based Scholarships: Erickson E. Moses (Sandra S. Pierantozzi Scholarship), Sheena D. Sengebau (Sandra S. Pierantozzi Scholarship), Jedidah E. Masahiro (Sandra S. Pierantozzi Scholarship), Turang D. Rengiil (Prince Lebuu Scholarship), Harriet D. Madrangchar (Prince Lebuu Scholarship), Sheila J. Pedro (Terry T. Ngirmang Nursing Scholarship), and Wade E. Kitalong (David W. Shipper Memorial Scholarship).

The PCC-based scholarships are awarded each academic year to full-time students enrolled in a PCC degree program. Interested students must be citizens of Palau with grade point averages (GPAs) of 2.00 or higher. The scholarships provide students with financial assistance related to their academic studies.

Mr. Kitalong is the first recipient of the David W. Shipper Memorial Scholarship. PCC-BASED SCHOLARSHIPS, CONTINUED ON PAGE 3

Tokai University Students Visit

Students from the Tokai University in Japan visited Palau Community College (PCC) on Monday, March 07, 2016. The students are participating in the 47th Overseas Educational Cruise which is an educational program at Tokai University that allows students to visit overseas nations on a research & training ship, the *Bosei Maru*, owned by the university. The students will visit Okinawa, Palau, Papua New Guinea, and Pohnpei before returning to Japan. They will spend a total of thirty four (34) days at sea. While in Palau, the group met with PCC students. After a welcoming at the PCC Cafeteria, the students played a friendly game of basketball at the Palau National Gymnasium. Afterwards, the Tokai University students performed a dance number at the cafeteria and participated in conversational exchanges with the PCC students. TOKAI UNIVERSITY, CONTINUED ON PAGE 3



ASPCC President-Elect Julianne P. Brechtefeld (far right) exchanging gifts with the Tokai University student body representatives

Palau Community College is an accessible public educational institution helping to meet the technical, academic, cultural, social, and economic needs of students and communities by promoting learning opportunities and developing personal excellence.

PCC Participates in Youth Conference



PCC Booth at Youth Conference hosted at the Ngarachamayong Cultural Center

Palau Community College (PCC) participated in the Youth Conference that was held at the Ngarachamayong Cultural Center from Wednesday, March 09, 2016 to Friday, March 11, 2016. A PCC Booth was set-up to provide students with information regarding the college programs, enrollment requirements, and learning resources. PCC Dean of Academic Affairs Robert Ramarui participated in the panel discussions.

Dean Sablan-Zebedy Visits PCC



(left to right): PCC President Dr. Patrick U. Tellei with University of Maine at Fort Kent Dean of Enrollment Services and Student Life Ms. Elia Sablan-Zebedy

On Friday, February 12, 2016 University of Maine at Fort Kent Dean of Enrollment Services and Student Life Ms. Elia Sablan-Zebedy visited Palau Community College (PCC) and met with PCC President Dr. Patrick U. Tellei to share information about her institution. Dean Sablan-Zebedy, who is from the Republic of the Marshall Islands (RMI), also met with the RMI students currently enrolled at the college. The University of Maine at Fort Kent is a public liberal arts university.

Specialized Training for Rangers

contributed by MAP Coordinator Don Hanser

Rangers from Kayangel State and Ngerchelongs State recently completed a “Boat Safety and Outboard Engine Troubleshooting” Training Course. The training was offered through the Maintenance Assistance Program (MAP) at Palau Community College (PCC). A forty-hour course, the training was developed for rangers from state governments in Palau that have designated marine protected areas (MPAs). The training focused on safety and maintenance, two important issues that the rangers must address while working.

PCC Small Engine & Outboard Marine Technology Instructional Assistants Marvin Yarofaisug and Santini B. Thomas were instructors for the training. During the hands-on portion of the training, the state rangers worked on various outboard marine engines that were available. The state rangers were encouraged to bring their own engines to the shop for additional lessons on the maintenance of different marine engines.

The training was conducted during the evening and the weekend hours. The two (2) states received mechanic tool kits, allowing their rangers to use their newly developed skills to keep their boat engines running properly. Participants from Kayangel State included Jordan Mongami, Oreokel Daniel, and Daley Chiokai. Rangers from Ngerchelongs State who participated in the training included Joseph Maldangesang, Mechaet Temong, Ronald Yashiro, Techeltoech Osima, and Snyder Skang.

The Maintenance Assistance Program at PCC is a short-term training program for state and national government employees, as well as utility employees, in the area of infrastructure operation and maintenance.



Kayangel and Ngerchelongs State Rangers who participated in the “Boat Safety and Outboard Engine Troubleshooting” Training

BITS AND PIECES...

Tan Siu Lin PCC Library

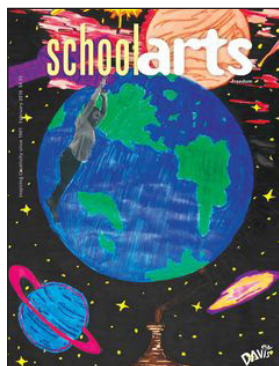
Hours of Operation

Monday to Thursday	7:30AM - 7PM
Friday	7:30AM - 5PM
Saturday	9AM - 6PM
Sunday	CLOSED

For more information, call:
488-3540

AVAILABLE TO INTERESTED READERS:

SCHOOLARTS MAGAZINE



"SchoolArts Magazine is a national art education magazine committed to promoting excellence, advocacy, and professional support for educators in the visual arts."

Academic Calendar: Spring 2016

March 15 (T)

Holiday: Youth Day

March 16-18 (W-F)

Students' Spring Break

March 24 (TH)

Last Day for All Withdrawals

News/Stories Wanted

Mezeki's News welcomes stories/articles/announcements from students, faculty, and staff. Submission deadline is Wednesday at 4:30 p.m. in hard and/or electronic copies to tchuziet@palau.edu or tchuziet@gmail.com.

Articles from MOC/PCC Alumni are also welcomed.

Please call 488-2470/2471 (extensions 251, 252, or 253) for more information.

PCC-Based Scholarships CONTINUED FROM PAGE 1

The scholarship was established in memory of Mr. Shipper, an attorney who practiced in Palau for many years. He also served as Assistant Attorney General to the President of Palau. In addition, Mr. Shipper was a Senior Legal Counsel who worked with international clients on human rights and international business issues.

This year's scholarships were funded by Bilung Gloria G. Salii, Mr. Marcello Pierantozzi & Senator Sandra S. Pierantozzi, PCC Nursing Instructor Terry T. Ngirmang, and the family of the late David W. Shipper.

Tokai University CONTINUED FROM PAGE 1

PCC students were invited to enjoy additional performances by the university students that evening on board the *Bosei Maru*.

The overseas educational cruise of Tokai University is an opportunity for its students to expand their understanding about cultural differences and international issues. It is also a learning experience that teaches its students how to live together with their peers on board a ship.

New Coral Species Discovered in Palau

contributed by the Palau International Coral Reef Center (PICRC)

Palau Coral Reef Island Ecosystem (P-CoRIE) Researcher Dr. James Reimer and graduate student Hiroki Kise from the University of Ryukyus (UoR) recently discovered a new coral reef species in Palau. The research was conducted as part of the P-CoRIE Project which was established in 2013 as a collaborative project between PICRC and UoR. The P-CoRIE Project falls under the Science and Technology Research Partnership for Sustainable Development (SATREPS) Program funded by Japan International Cooperation Agency (JICA) and the Japan Science and Technology Agency (JST).

The new species was identified and given the scientific name *Epizoanthus beriber*. Because it is found in caves, the new coral species was named after a local folklore character named Beriber who lived in a cave. Beriber had lived in a cave at Oikull, Airai for many years adjacent to another cave dweller named Chemaredong. Both did not know they were neighbors for many years but later discovered each other.



Epizoanthus beriber

Epizoanthus beriber is closely related to hard corals and sea anemones. They form colonies and dwell in low-light environments such as cave dwellings. *Epizoanthus beriber* was first discovered at the following popular dive spots: Siaes Tunnel, Blue Hole, and Turtle Cove. The discovery of this new species was published *ZooKeys*, a peer-reviewed open access scientific journal covering zoological taxonomy, phylogeny, and biogeography.

PCC CAMPUS PROFILES

ALLINS NOBUO

HEALTH & PHYSICAL EDUCATION INSTRUCTOR

The only thing that ever sat its way to success was a hen."



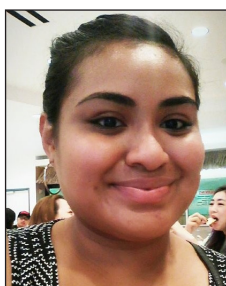
Allins Nobuo has been working as the Health & Physical Education Instructor for Palau Community College (PCC) for two (2) years. He holds a Bachelor of Science Degree in Physical Education from Walla Walla University in Walla Walla, Washington State USA. His teaching experiences include being a Physical Education Teacher for elementary & high school students. He has also been a coach for high school and college volleyball. Instructor Nobuo is a member of the PCC Faculty Senate Association (FSA). He enjoys playing volleyball, tennis, and golf in his free time.

ALUMNI NOTES

MICHELLE B. UEDA

(Class of 2011)

ASSOCIATE OF ARTS - LIBERAL ARTS



Michelle graduated from PCC with an AA Degree in Liberal Arts. She currently works for the Substance Abuse Prevention Section of the Ministry of Health. As a student, Ms. Ueda served as Student Trustee for the PCC Board of Trustees.



Mesekiu's News

Palau Community College

P.O. Box 9 Koror, Palau 96940

ALUMNI NOTES showcases MOC & PCC alumni who are positive role models and contribute to the quality of life in their local communities.

If you are that Alumna/Alumnus or know someone who is, please contact the PCC Development Office at telephone numbers 488-2470/2471 (extensions 251, 252, or 253).

We would like to feature you in future *Mesekiu's News* issues.

Pristine Campus Campaign presents

LOGO & SLOGAN CONTEST

CONTEST IS OPEN TO PCC STUDENTS and EMPLOYEES ONLY!

All contest entries must be submitted to the PCC Development Office by 5:00PM on THURSDAY, MARCH 31, 2016 in both PRINTED & ELECTRONIC forms. Multiple submissions are permitted. Make sure to include your name and contact information with all submissions. Winning entries will be featured in the Mesekiu's News and posted on signs around campus. CASH PRIZE will be awarded to the first, second, and third place winners.

THEME: CLEAN CAMPUS

sponsored by: The Faculty Senate Association (FSA), the Associated Students of Palau Community College (ASPC), and the Classified Staff Organization (CSO)

Celebrating Birthdays

William T. Mitchell	March 12
Thomas Taro	March 13
Gibson Towai	March 13
E-Van T. Ongrung	March 13
Petrus Itelmong	March 15



HAPPY BIRTHDAY!

VACANCY ANNOUNCEMENT

- (1) Instructional Assistant - Construction Technology
(Academic Affairs Division)
salary range: \$8,991 - \$15,378 per annum
- (2) Air-Conditioning & Refrigeration Instructor
(Academic Affairs Office)
salary range: \$16,010 - \$28,280 per annum

For application forms and information, contact Harline Haruo at the PCC Human Resources Office at 488-2470/2471 extension 227, or e-mail: hr@palau.edu, or download forms at <http://pcc.palau.edu>.

"PCC is an Equal Opportunity Employer."

PCC Endowment Fund

INVEST IN THE FUTURE

OF OUR STUDENTS, OUR COLLEGE, AND OUR NATION

To SUPPORT, CONTACT US TODAY!

P.O. BOX 9 Koror, Palau 96940

Phone: 488-2470/2471 (ext. 251/253)

e-mail: tellei@palau.edu

If you want to join the Bi-Weekly Allotment Program, **contact us NOW!**

FIND PCC ONLINE FOR MORE INFORMATION



<http://pcc.palau.edu>



Palau Community College - PCC

**285 LBS. PIG
FOR SALE!
\$2.50 A POUND**

**Contact E-Van T.
Ongrung at (cell):
779-3826 for more
information.**

stamp here