

FREE!!!



Palau Community College

MESEKIU'S NEWS



Friday, August 19, 2016

Weekly Newsletter

Volume 18, Issue 34

First Week of Instruction for Fall 2016



Students enjoying their first week on the college campus

The first day of instruction for the fall semester of Palau Community College (PCC) was on Monday, August 15, 2016. Instructors distributed syllabuses that outlined the lessons that will be taught in the new term. They also shared with the students information about the expected learning outcomes as well as the necessary workload that will guarantee a passing grade for each course.

This week also marked the add-and-drop period. Students who are unable to meet the course requirements or cannot maintain attendance for personal reasons may drop classes. They may also replace their classes or modify their class schedules to fit their personal preferences.

The college would like to remind all students that open communication is an important part of their learning experience. Please discuss any issue related to your classes, schedules, or degree programs with the Academic Advisors/Counselors at the PCC Student Life Office. The counselors are more than willing to provide the necessary assistance to help you cope with personal and academic struggles. FIRST WEEK, CONTINUED ON PAGE 4

Presidential Debate Held at PCC

On Wednesday, August 17, 2016 a debate among the presidential candidates running in the this year's national elections was held at Palau Community College (PCC) Cafeteria. The debate was an opportunity for the candidates to share their plans as we as address issues that are important to the citizens of Palau. A total of eight (8) debate questions were asked including four (4) from students of the college. The questions covered a range of topics concerning the community such as overcrowding in Koror, the quality of health care services being provided by the Belau National Hospital, changes that must be made in order to improve Palau's quality of education, and plans that the government must adapt to improve the lives of the people of Palau. The 2016 Presidential Debate of Palau was sponsored by the Palau Media Council and PCC.



Presidential Candidates (left to right) Republic of Palau Vice President/Minister of Justice Antonio Bells, Republic of Palau President Tommy E. Remengesau Jr., Senator Sandra S. Pierantozzi, and Senator Surangel Whipps Jr.

Palau Community College is an accessible public educational institution helping to meet the technical, academic, cultural, social, and economic needs of students and communities by promoting learning opportunities and developing personal excellence.

PCAA 2016 Education Academy Begins

July 26, 2016 was the first day of instruction for the participants of the 2016 Summer Academy Program at Palau Community College (PCC). The academy provided educational training for participants from the Ministry of Education, the Palau Community Action Agency (PCAA) - Head Start Program, and the PCC Day Care Center. PCAA, CONTINUED ON PAGE 3



(left to right, standing): Maurine Teblak - Palau Head Start; Rosary Lieb - Palau Head Start; Lucien Olikong - Palau Head Start; Arlene Trolie - Special Education Program under the Ministry of Education; Virginia Emeterio - Palau Head Start; Heidi Beltau - Supervisor of the PCC Day Care Center; (left to right, sitting): Joanie Smau - Palau Head Start; Glenda Gabino - Palau Head Start; Geraldine Renguul - Palau Head Start; and Jawea Ucharm - Palau Head Start

PCC Faculty Workshop at Chamayong



PCC instructors and staff who participated in the two-day workshop that was held at the Ngarachamayong Cultural Center

From Thursday, August 04, 2016 to Friday, August 05, 2016 a workshop was hosted for the faculty members of Palau Community College (PCC) at the Ngarachamayong Cultural Center. The workshop focused on improving the quality of education provided at the college by exploring different teaching methods that the instructors could apply in classrooms. PCC Accreditation Liaison Officer (ALO) Deikola Olikong also reviewed the TracDat® assessment software with the faculty members. WORKSHOP, CONTINUED ON PAGE 3

Moylan's Insurance Scholarship Fund

On Tuesday, August 09, 2016 representatives from Moylan's Insurance Underwriters Inc. presented a donation for a scholarship at Palau Community College (PCC). The Moylan's Insurance PCC-Based Scholarship supports the educational endeavors of two (2) full-time students by providing each with \$500 (\$250 per semester) each school year. The donation was presented by Ms. June Rdialul and Mr. Sly Reblud. PCC Office of the President's Secretary Ms. Yechur Emesiochel received the donation on behalf of the college. PCC would like to thank Moylan's Insurance Underwriters Inc. for their continued support of the educational pursuits of Palau's students. For more information regarding the PCC-based scholarships, please contact the PCC Development Office at (tel): 488-2470 or 2471 extensions 252 or 253.



(left to right): Sly Reblud and June Rdialul from Moylan's Insurance Underwriters Inc. presenting the scholarship fund to PCC President's Office Secretary Yechur Emesiochel

2016-2017 PCC-BASED SCHOLARSHIPS APPLICATIONS NOW AVAILABLE!

PIERANTOZZI SCHOLARSHIP

MATSON SCHOLARSHIP

MOYLAN'S INSURANCE SCHOLARSHIP

IP&E PALAU INC. SCHOLARSHIP

PRINCE LEEBOO SCHOLARSHIP

DAVID W. SHIPPER MEMORIAL SCHOLARSHIP

TERRY T. NGIRMANG NURSING SCHOLARSHIP

APPLICATIONS MAY BE OBTAINED AT THE PCC DEVELOPMENT OFFICE. ALSO, CONTACT THE PCC DEVELOPMENT OFFICE FOR MORE INFORMATION ABOUT THE PCC-BASED SCHOLARSHIPS:

PCC DEVELOPMENT OFFICE
(TEL): 488-2470/2471 EXT. 252 OR 253

BITS AND PIECES...

Tan Siu Lin PCC Library

Hours of Operation

Monday to Thursday	7:30 ^{AM} - 7 ^{PM}
Friday	7:30 ^{AM} - 5 ^{PM}
Saturday	9 ^{AM} - 6 ^{PM}
Sunday	CLOSED

For more information, call:
488-3540.

AVAILABLE TO INTERESTED READERS: NATIONAL TEACHING & LEARNING FORUM



"National Teaching & Learning Forum covers the breadth of college teaching and learning issues including learning theory, class management, pedagogical innovation, technology and more. With regular features and progressive coverage of developments as they happen, the forum builds and supports an ongoing conversation about teaching and learning on campus."

Academic Calendar: Fall 2016

August 15-19 (M-F)
Drop/Add Period

August 15-26 (M-F)
Student ID Card Processing

October 03-07 (M-F)
Mid-Term Period

News/Stories Wanted

Mesekiw's News welcomes stories/articles/announcements from students, faculty, and staff. Submission deadline is Wednesday at 4:30 p.m. in hard and/or electronic copies to tchuziet@palau.edu or tchuziet@gmail.com.

Articles from MOC/PCC Alumni are also welcomed.

Please call 488-2470/2471 (extensions 251, 252, or 253) for more information.

PCAA CONTINUED FROM PAGE 2

In a memorandum that was signed by both institutions on May 2016, the summer academy will provide participants with training that focuses on proper teaching methods for children in the elementary & pre-school education levels. The participants learned how to maintain a learning environment that meets the needs of all children. Earlier this summer, representatives from PCAA had met with PCC Accreditation Liaison Officer (ALO) Deikola Olikong, PCC Dean of Academic Affairs Robert Ramarui, and PCC Associate Dean of Academic Affairs Marianne Temaungil to further discuss the implementation of the summer program.

The summer academy had a total of ten (10) participants: Maurine Teblak (Palau Head Start), Rosary Lieb (Palau Head Start), Lucien Olikong (Palau Head Start), Arlene Trolui (MOE Special Education Program), Virginia Emeterio (Palau Head Start), Heidi Beltau (PCC Day Care Center), Joanie Smau (Palau Head Start), Glenda Gabino (Palau Head Start), Geraldine Renguul (Palau Head Start), and Jawea Ucharm (Palau Head Start).

Workshop CONTINUED FROM PAGE 2

TracDat® is a web-based assessment system with a flexible framework that helps learning institutions organize, align, document, report, and take effective actions for improvement. It supports data-informed strategic planning, program review, accreditation, and managing academic and administrative outcomes.

ALO Olikong also discussed the recommendations stated in the letter from the Accrediting Commission for Community and Junior Colleges, Western Association of Schools and Colleges (ACCJC-WASC) President Dr. Barbara A. Beno. The college must meet the recommendations in order to maintain its accreditation status.

PCC President Dr. Patrick U. Tellei met with the faculty members on the first day of the workshop. He shared with the instructors information regarding the changes being made this semester, such as the cancellation of developmental courses. PCC President Dr. Tellei also discussed events that the college was currently accommodating, specifically the 2016 Pacific Partnership, and improvements made to the college campus.

2016-2017 FACULTY SENATE SCHOLARSHIP

The Faculty Senate Association (FSA) Assistance Scholarship is open to first-year (freshmen) and second-year (sophomore) students who are enrolled as full-time (maintain at least 12 credits per semester) students at Palau Community College (PCC). All interested students are encouraged to apply! The application forms are available at the PCC Development Office, located across from the Tan Siu Lin PCC Library.

For more information about the FSA Assistance Scholarship, please contact the PCC Development Office at (tel): 488-2470/2471 ext. 252 or 253.

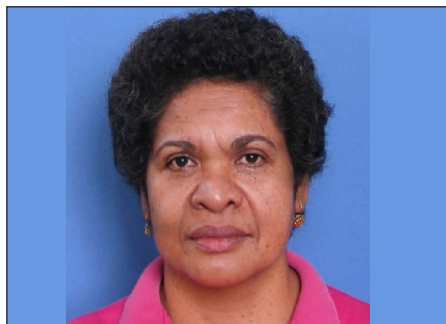
DEADLINE: FRIDAY, SEPTEMBER 09, 2016

PCC CAMPUS PROFILES

LOURDES M. REKSID

REGISTRAR & RECORDS - ADMINISTRATIVE ASSISTANT

"Adopt an optimistic point of view because your attitude, especially in difficult situations, can affect your level of success."



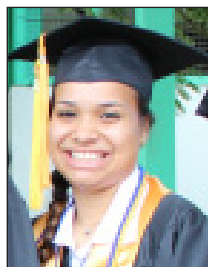
Lourdes M. Reksid has been working at Palau Community College (PCC) for over thirty (30) years. She is the Administrative Assistant at the Registrar & Records Office. Her duties include assisting students with finalizing their class schedules and maintaining the Registrar's Office record regarding student enrollment. In 1985, Ms. Reksid graduated from Knoxville College in Knoxville, Tennessee USA where she received a Bachelor of Science (BS) Degree in Business Management. Ms. Reksid is a member of the PCC Classified Staff Organization (CSO). In her free time, she enjoys watching Korean dramas (Arirang).

ALUMNI NOTES

MARIAH U. LUND

(Class of 2014)

ASSOCIATE OF SCIENCE - NURSING CAREER LADDER



Mariah graduated from PCC in 2014 with an AS Degree in Nursing. She currently works as a Registered Nurse at the Belau National Hospital.



Mesekiu's News

Palau Community College

P.O. Box 9 Koror, Palau 96940

ALUMNI NOTES showcases MOC & PCC alumni who are positive role models and contribute to the quality of life in their local communities.

If you are that Alumna/Alumnus or know someone who is, please contact the PCC Development Office at telephone numbers 488-2470/2471 (extensions 251, 252, or 253).

We would like to feature you in future *Mesekiu's News* issues.

First Week CONTINUED FROM PAGE 1

You may contact your counselors at the PCC Student Life Office at (tel): 488-3036.

It is also important for the students to communicate with their instructors, especially when personal obligations conflict with their academic studies. Please inform your instructors if you are unable to attend classes or meet with your instructors on a later date to discuss your assignments if you had to miss class. Openly communicating with the faculty will improve your learning experience at the college. Please contact your instructors at the Academic Affairs Office at (tel): 488-2470/2471 ext. 240 or 245.

Student services, such as peer tutoring, are also available if you need further instruction with your studies. Learning resources and reading materials are available at the Tan Siu Lin PCC Library for your use. Feel free to ask any college staff for further assistance regarding your classes or studies. The college is dedicated to helping you achieve academic success and wishes all its students the best this new semester!

Celebrating Birthdays

Arlene Ignacio

August 24

Clara Maile Andreas

August 24

Hosea Sumang

August 25



HAPPY BIRTHDAY!

VACANCY ANNOUNCEMENT

- (1) Instructional Assistant - Construction Technology
(Academic Affairs Division)
salary range: \$8,991 - \$15,378 per annum
- (2) Air-Conditioning & Refrigeration Instructor
(Academic Affairs Office)
salary range: \$16,010 - \$28,280 per annum
- (3) Maintenance Technicians (4)
(Administration Department - Physical Plant)
salary range: \$8,155 - \$13,948 per annum
- (4) Library Assistant
(Tan Siu Lin PCC Library)
salary range: \$6,086 - \$10,408 per annum
- (5) Twenty-Three (24) Part-Time Tutors
(Talent Search Office)
salary range: \$400 - 1,200 per annum

For application forms and information, contact Harline Haruo at the PCC Human Resources Office at 488-2470/2471 extension 227, or e-mail: hr@palau.edu, or download forms at <http://pcc.palau.edu>.

"PCC is an Equal Opportunity Employer."

PCC Endowment Fund

INVEST IN THE FUTURE

OF OUR STUDENTS, OUR COLLEGE, AND OUR NATION

**TO SUPPORT,
CONTACT US TODAY!**

P.O. BOX 9 Koror, Palau 96940

Phone: 488-2470/2471 (ext. 251/253)

e-mail: tellei@palau.edu

If you want to join the Bi-Weekly Allotment Program, contact us NOW!

FIND PCC ONLINE FOR MORE INFORMATION



<http://pcc.palau.edu>



Palau Community College - PCC

stamp here