

FREE!!!



Palau Community College

MESEKIU'S NEWS



Friday, December 09, 2016

Weekly Newsletter

Volume 18, Issue 49

“Violence Against Women” Campaign Hosted at PCC



(left to right): Senator Rukebai K. Inabo, ASPCC Secretary Arantxa O. Andres, Senator J. Uduch Sengebaw-Senior, ASPCC Treasurer Komtil Masayos, ASPCC President Julianne Brechtefeld, and Senator Sandra S. Pierantozzi

On Wednesday, November 30, 2016 a Youth Justice Outreach Program that focused on ending violence against women was held at the Palau Community College (PCC) Assembly Hall. The event was a part of the United Nations Secretary-General's UNiTE to End Violence Against Women Campaign. The outreach program aimed to raise awareness and advocate for the ending of all forms of violence against women and girls worldwide.

The Youth Justice Outreach Campaign was part of the sixteen (16) days of activism that promoted the ending of violence against women and girls. The activism activities began on Friday, November 25, 2016 (International Day for the Elimination of Violence against Women) and will continue until Saturday, December 10, 2016 (Human Rights Day).

The Youth Justice Outreach Campaign featured presentations, discussions, and pamphlets with information related to ending acts of violence. Invited guest speakers discussed the data about violence against women and girls from countries in Asia as well as the Pacific region. UNiTE, CONTINUED ON PAGE 3

UoR Student Exchange Program

A presentation about the student exchange program between Palau Community College (PCC) and the University of the Ryukyus (UoR) was recently held at the PCC Assembly Hall. UoR representatives met with interested students to provide details about the requirements for the student exchange program. Entrance examinations for the program are tentatively scheduled for 2018 with first admission in 2019. A Memorandum of Understanding (MOU) signed by PCC President Dr. Patrick U. Tellei and UoR President Moshin Morita established a student exchange program between their institution. The MOU states that each institution may send and accept no more than one (1) student each academic year. The exchange student's study program will be determined by the host institution. In addition, credits awarded by the host institution will be determined by that institution's academic requirements. UoR, CONTINUED ON PAGE 3



PCC Dean of Students Sherman Daniel (standing, far left), PCC Dean of Academic Affairs Robert Ramarui (standing, far right), PCC Japanese Language Instructor Reiko Kawamura (standing, second from right), and PCC students with UoR Representatives

Palau Community College is an accessible public educational institution helping to meet the technical, academic, cultural, social, and economic needs of students and communities by promoting learning opportunities and developing personal excellence.

Tourism Students Host Dinner Buffet

Palau Community College (PCC) students enrolled in the TH-101: Food Production & Sanitation Class and the TH-201: Dining Room and Beverage Operations Class hosted a dinner buffet at the Restaurant Area of the Palau Tourism & Hospitality School of Excellence Building on Friday, December 02, 2016. The dinner was an opportunity for the students to showcase the food preparation & dining operation skills they had learned this semester.

Distinguished guests invited to the event included PCC Vice President of Administration & Finance Jay Olegeriil, PCC Director of Finance Uroi N. Sali, PCC Director of Development Tchuzie Tadao, and PCC Dean of Academic Affairs Robert Ramarui. The Taj Restaurant Owner/Manager Mr. Robert Scaria (also the Honorary Consul of India to the Republic of Palau) and Ms. Victoria Maui (a former instructor for the PCC Tourism & Hospitality Program) were also invited to the dinner.

The function featured dishes prepared by the tourism & hospitality students. Courses included macaroni with tomato cream sauce, assorted barbecue (chicken, hotdogs, and meat), potato au gratin, corn on the cob, and roasted chicken with gravy. The dinner also offered a selection of salad, soup, bread, and bisque. Desserts were cut fruits in glasses and bread pudding.

TH-101: Food Production & Sanitation and TH-201: Dining and Beverage Operations are taught by PCC Instructor Latheef Nissam. PCC Instructor Nissam and Instructor Stephanie B. Nakamura (also the Chairperson of the PCC Tourism & Hospitality Program) were also in attendance at the dinner buffet to assess the skills of their students.



PCC students with PCC Tourism & Hospitality Instructor Latheef Nissam (sitting, center), PCC Tourism & Hospitality Program Chairperson/Instructor Stephanie B. Nakamura (sitting, right), and Tourism & Hospitality Mentor (also former PCC Instructor) Victoria Maui (sitting, left)

CONDOLENCES TO THE FAMILY OF DANIEL J. PEACOCK

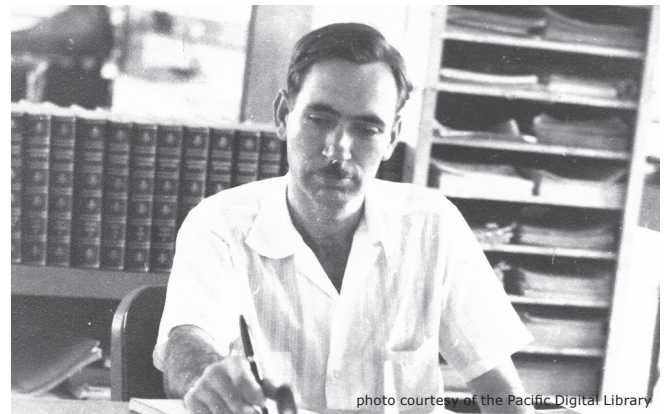


photo courtesy of the Pacific Digital Library

Palau Community College (PCC) would like to express its deepest condolences to the family of the late Daniel J. Peacock. Mr. Peacock was a prominent influence on the development of libraries throughout the region. In 1953, Mr. Peacock arrived in Micronesia as an Educational Administrator for the then Education Department of the United States (U. S.) Trust Territories. He spent five (5) years in Palau as an Educational Administrator, seven (7) years in Pohnpei as a Teacher-Librarian for the Pacific Islands Center School, and thirteen (13) years in Saipan as a Supervisor for the island's Library Services.

Mr. Peacock was a graduate of the Earlham College in Indiana and also studied at the University of Pennsylvania. His major studies were in the fields of English and Sociology. Mr. Peacock had been a Youth Work Director in Philadelphia, Pennsylvania USA prior to his work in Micronesia. He had assisted with the organization as well as direction of clubs, classes, and community group for the young people of the city. In addition to his works with the library services of Micronesia, Mr. Peacock had written numerous papers and books about Palau. His most significant publication is the book about Palau's Prince Lee Boo (*Lee Boo of Belau: A Prince in London*).

Mr. Peacock retired in 1980 and was the recipient of the Pacific Islands Association of Libraries, Archives, and Museums (PIALA) Lifetime Achievement Award for his work in the development of libraries throughout the islands of Micronesia.

PCC would like to recognize the works of Mr. Peacock and send its well wishes to his family. We keep you all in our thoughts and prayers. The contributions of Mr. Peacock, especially his influence on the library & information services of Micronesia, will always be appreciated. Thank you for sharing Palau with the world and for sharing the world with Palau.

PCC SPRING SEMESTER 2017 EARLY PRE-REGISTRATION PERIOD

Early registration for the Spring Semester 2017 (SP2017) began on Thursday, October 27, 2016. This is an opportunity for Continuing Students currently enrolled in the Fall Semester 2016 to reserve classes for next semester. Once you pre-register, you will not have to return to campus until the First Day of Instruction on Monday, January 16, 2017.

Please follow the Regular Registration Process when you pre-register for classes. For more information regarding the Early Registration Process, please call (tel): 488-2470-2471 ext. 249 or 274.

BITS AND PIECES...

Tan Siu Lin PCC Library

Hours of Operation

Monday to Thursday	7:30AM - 7PM
Friday	7:30AM - 5PM
Saturday	9AM - 6PM
Sunday	CLOSED

For more information, call:
488-3540.

AVAILABLE TO INTERESTED READERS: FINE GARDENING MAGAZINE



"Fine Gardening Magazine brings you breath-taking design ideas, helpful techniques, and the know-how to get great results in your own garden. In every issue we offer expert know-how on design, plants, techniques, and more. In fact, Fine Gardening Magazine is the only gardening magazine that provides a full set of instructions for every inspired idea we show you."

Academic Calendar: Fall 2016

December 06-08 (T-F)
Final Examination Period

December 13 (T)
Grades Due by 11:00AM

December 25 (SU)
Holiday: Christmas Day

News/Stories Wanted

Mesekiw's News welcomes stories/articles/announcements from students, faculty, and staff. Submission deadline is Wednesday at 4:30 p.m. in hard and/or electronic copies to tchuziet@palau.edu or tchuziet@gmail.com.

Articles from MOC/PCC Alumni are also welcomed.

Please call 488-2470/2471 (extensions 251, 252, or 253) for more information.

UNiTE CONTINUED FROM PAGE 1

Guest speakers who shared information included Senator J. Uduch Sengbau-Senior, Dr. Sylvia Wally, and Palau Supreme Court Judge Honora Remengesau-Rudimch. Printed materials (brochures, pamphlets, etc.) were also provided in order to share with the audience detailed information about acts of violence.

Participants of the presentation learned about the various forms of violent acts that are currently hindering the livelihood of women worldwide. Acts of physical abuse and emotional trauma are still prevalent in many parts of the world. Such actions have continued to limit the opportunities available to young girls and women around the world. The Youth Justice Outreach Campaign highlighted signs of abuse and encouraged everyone who may be experiencing forms of abuse to seek assistance. Information about local agencies that assisted victims of violence were also provided.

The United Nations Secretary-General's UNiTE Campaign proclaims the 25th of each month as "Orange Day" in order to promote the need for taking action against violence against women and girls worldwide. This idea is encouraged through acts of activism, such as the Youth Justice Outreach Program, that highlight issues relevant to the prevention of violence. The UNiTE Campaign Orange Day Action Plan for the next month's "Orange Day" will focus on information about accessing justice and promoting peaceful societies for sustainable development for women and girls.

UoR CONTINUED FROM PAGE 1

In September of this year, a group of UoR representatives discussed with PCC Dean of Students Sherman Daniel, PCC Dean of Academic Affairs Robert Ramarui, and PCC Associate Dean of Academic Affairs Marianne Temaungil the implementation of the program.

The student exchange program is an opportunity for UoR to contribute to the human resource development of the Pacific islands by supporting graduates from community colleges who are striving to obtain their bachelor's degrees.

The institution established traditions that promote freedom, equality, tolerance, and peace. The studies offered at the university are designed to meet the social & environmental needs of the world today. The University of the Ryukyus has supported the masters degree studies of numerous Palauans. Recently Victor Nestor, an alumnus of Palau Community College, completed his Masters Degree Program.

In addition to education, the UoR is also part of the Palau Coral Reef Island Ecosystem Project (P-CoRIE Project) involving Palau Community College and the Palau International Coral Reef Center (PICRC). The collaborative research project focuses on sustainable management of coral reefs and island ecosystems through scientific research of Palau's coral reefs. The data collected from the researches will help Palau and Japan understand effects of climate change on island ecosystems which will, in turn, form solutions for protecting marine environments.

PCC CAMPUS PROFILES

GUESS WHO!

RULES: GUESS THE PEOPLE FEATURED IN THE PHOTOGRAPH BELOW AND WIN A PRIZE COURTESY OF THE PCC DEVELOPMENT OFFICE. ALL STUDENTS ARE ELIGIBLE TO ATTEMPT THIS CHALLENGE.



Palau Community College (PCC) has continued to strive because of the dedication & commitment of its employees. The photograph above features four (4) current faculty & staff members who have been employed at the college for many years. If you could identify the staff & faculty members as well as their current positions/job titles, the PCC Development Office will reward you. All students (except the students who are working for the PCC Development Office) are eligible to attempt this challenge. Please visit the PCC Development Office to submit your answer or call (tel): 488-2470/2471 ext. 251, 252, or 253 for more information. An answer will be featured in next week's newsletter!

ALUMNI NOTES

NENA NED

(Class of 1981)

CERTIFICATE - AUTOBODY REPAIR



Nena graduated from the Micronesia Occupational College (MOC) in 1981 with a Certificate in AutoBody Repair. He is currently the General Manager for the Kosrae Terminal & Stevedoring Company.



Mesekiu's News

Palau Community College

P.O. Box 9 Koror, Palau 96940

ALUMNI NOTES showcases MOC & PCC alumni who are positive role models and contribute to the quality of life in their local communities.

If you are that Alumna/Alumnus or know someone who is, please contact the PCC Development Office at telephone numbers 488-2470/2471 (extensions 251, 252, or 253).

We would like to feature you in future *Mesekiu's News* issues.

TAN SIU LIN PALAU COMMUNITY COLLEGE LIBRARY AMNESTY WEEK

PCC Library would like to inform the general public that beginning December 12-17 of this year, we will be having our Library Amnesty Week. We want to welcome all patrons to return any library items (books, DVDs, etc.) back to the library and have their account cleaned. No matter how many years ago you checked it out, this is your chance to bring it back to the library during this week and we'll reduce your fines to ZERO! That's right, Z-E-R-O. We want to have those unreturned items back but most importantly, the opportunities to reconnect with our patrons. If your library card is inactive then the library staff will be happy to update and re-activate your library account.

DECEMBER 12 -17, 2016
RETURN ALL LIBRARY ITEMS (BOOKS, DVDs, ETC.)
FREE OF CHARGE OR OVERDUE FEES!

Celebrating Birthdays

Danka Ledgerwood



December 09

HAPPY BIRTHDAY!

VACANCY ANNOUNCEMENT

- (1) Air-Conditioning & Refrigeration Instructor
(Academic Affairs Office)
salary range: \$16,010 - \$28,280 per annum
- (2) Maintenance Technicians (4)
(Administration Department - Physical Plant)
salary range: \$8,155 - \$13,948 per annum
- (3) Counselor
(Student Life & Housing Office)
salary range: \$12,653 - \$19,479 per annum
- (4) Counselor
(PCC Adult High School)
salary range: \$12,049 - \$20,607 per annum

For application forms and information, contact Harline Haruo at the PCC Human Resources Office at 488-2470/2471 extension 227, or e-mail: hr@palau.edu, or download forms at <http://pcc.palau.edu>.

"PCC is an Equal Opportunity Employer."

PCC Endowment Fund

INVEST IN THE FUTURE
OF OUR STUDENTS, OUR COLLEGE, AND OUR NATION

**To SUPPORT,
CONTACT US TODAY!**

P.O. BOX 9 Koror, Palau 96940

Phone: 488-2470/2471 (ext. 251/253)

e-mail: tellei@palau.edu

If you want to join the Bi-Weekly Allotment Program, contact us NOW!

FIND PCC ONLINE FOR MORE INFORMATION



<http://pcc.palau.edu>



Palau Community College - PCC

stamp here