

FREE!!!



Palau Community College

MESEKIU'S NEWS



Friday, March 03, 2017

Weekly Newsletter

Volume 19, Issue 09

PCC Introduces New Robotics Course To Curriculum



Students currently enrolled in robotics course working on current projects

PCC, in its continued pursuit to expand and advance our range of educational offerings to our students, has recently introduced the study of Robotics, into the General Electrics Technology program, in the form of two new courses, GE128 Robotics I and GE212 Robotics II. GE128 covers basic robotic programming, assembly, testing, motor control, interfacing, light and sound sensory, and remote control. Students who take these courses will be building robots to learn skills in wiring, source coding, tuning, and problem solving in areas such as robotics development and robot navigation. Upon completing the GE128 course these students will advance to course GE212 which will give them experience in the mechanical assembly and programming of quad-copter robotics, commonly known as flying drones. These students will learn the mechanical build of these drones as well as drone technology application such as land mapping and surveying, real-estate observation and aerial video. Through these courses they will also experience, in depth, airborne video system installation. In this day and age, robotics technology is continuously approaching new levels of advancement and is every day becoming more intergrated with peoples' daily lives, making significant strides in multiple areas that benefit humankind, and Palau Community College is committed to advancing it's curriculum to prepare our students today, for our world tomorrow.

Australian Govt Reps. Meets PCC Students To Discuss Australian Awards Pacific Scholarship (AAPS)

On Monday, February 20th, 2017, a delegation from the Australian Government held a presentation in the PCC Assembly Hall to invite eligible students to apply to the **Australian Awards Pacific Scholarship (AAPS) Intake Year 2018**. AAPS 2018 commences January 2018 for full time undergraduate and graduate study in Fiji and Vanuatu. The scholarship covers tuition, airfares, and a modest living allowance that covers accomodation, food and basic medical coverage. To be eligible for consideration a student must have an Associate Degree, or is due to complete by June 2017 with a minimum GPA of 2.8 or be over 25 years of age with a High School GPA of 2.8 or higher and have a minimum of 5 years work experience in a related field of study. Applications are due by the 30th of April, 2017 and must be typed. For more information please contact Pavle Vizintin at pavle.vizintin@dfat.gov.au or PCC admissions office for assistance.



Australian Awards Pacific Scholarship (AAPS) representative, Mr. Pavle Vizintin giving presentation

Palau Community College is an accessible public educational institution helping to meet the technical, academic, cultural, social, and economic needs of students and communities by promoting learning opportunities and developing personal excellence.

Public Announcement

2017 Fall Session PCC Adult High School

Palau Community College would like to take this opportunity to let those who have reached the age of eighteen or older and were unable to acquire a high school diploma, know that the opportunity is open for them to enter and complete the Adult High School Program at PCC to receive their diploma. Registration begins this month and continues until the month of July 2017. The program can only start if ten or more students register. Those who come late can begin when the next set of classes start. Registration is open to anyone from any of all sixteen states of the Republic of Palau and, PCC will bring this education opportunity to any state with at least 10 interested students registered. **For more information call (680)488-2471 ext. 267 or (680)488-3926 and ask for Director C. Maile Andreas or Lakolani Olngellel.**

Tirkel chad el kiei ra ngidil tara aikal 16 states era Beluu er Belau a dirrek el sebechir el soiseb era tiakid el osisiu el program alsekum tebetok era teruich el chad a semeriar. A PCC a ngerchelel el nguu tial program el lekor sel state el mngarngii.

Al ngar ngii a kerim el kirel tial program e moutekangel el lomekedong era dengua el 488-2471 extension 267 e mongedecheduch era Director C. Maile Andreas, malechub eng 488-3926 e mongedecheduch era Lakolani Olngellel el kirel a mui e komakai el lomesodel tial program.

PCC CONTINUING EDUCATION (CE) NON-CREDIT COURSES OFFERED

The Palau Community College Continuing Education (CE) is currently offering non-credit courses this time for interested individuals, group, and businesses:

CONSTRUCTION CLASS
Plumbing Maintenance & Repair
Plastering

COMPUTER CLASS
Personal Computer Servicing & Maintenance
Introduction to Microprocessors

LANGUAGE CLASS
Advanced Palauan
Basic Palauan
Basic English Reading & Writing

MANAGEMENT TRAINING
Time Management

MATH & ENGLISH For Adult
Report Writing

OFFICE SKILLS
How to take minutes
Office Administration
Telephone Etiquette

PALAUAN HERITAGE & CULTURE
History of Palau

For more information regarding the training being offered by the PCC Continuing Education (CE) Department, please contact the Ms. Courtney Joshua at (tel): 488-6223.

Continuing Education Department

P.O. Box 9

Koror, Palau 96940

(tel): 488-6223 or 488-2470/2471

2017 Taiwan ICDF Higher Education Scholarship

The 2017 Taiwan International Cooperation and Development Fund (ICDF) International Higher Education Scholarship Program is now accepting applications. The Taiwan ICDF provides scholarships for higher education and has developed undergraduate, graduate and Ph.D. programs in cooperation with renowned partner universities in Taiwan. Students accepted under the scholarship program will each receive a full scholarship that includes return airfare, housing, tuition & credit fees, insurance, textbook costs, and monthly allowances. This year, there are thirty-one (31) Programs offered for Taiwan ICDF Scholarship applica-

Applications must be completed online (<http://www.icdf.org.tw>) and submitted by March 17, 2017.



2017 MOFA TAIWAN SCHOLARSHIP

for Undergraduate, Master, or Doctoral Degrees
sponsored by the Taiwan Ministry of Foreign Affairs (MOFA)



The Taiwan Scholarship Program is a joint initiative launched by the Ministry of Foreign Affairs (MOFA), the Ministry of Education (MOE), the Ministry of Economic Affairs (MOEA), and the National Science Council (NSC) in 2004. The MOFA Taiwan Scholarship continues to encourage outstanding students to pursue academic degrees in Taiwan and to deepen their understanding of Taiwan's academic environment, thereby enhancing exchanges, and building friendships between Taiwan and their home nations. The MOFA Taiwan Scholarship is, in principle, granted to students from countries that have diplomatic relations with Taiwan. However, special consideration may also be given to students from other countries.

Applications must be submitted to the Republic of China - Taiwan Embassy in Palau (located at the WCTC Shopping Center Building) by March 24, 2017.

BITS AND PIECES...

Tan Siu Lin PCC Library

Hours of Operation

Monday to Thursday	7:30AM - 7PM
Friday	7:30AM - 5PM
Saturday	9AM - 6PM
Sunday	CLOSED

For more information, call:
488-3540.

AVAILABLE TO INTERESTED READERS:

DISCOVER MAGAZINE



Discover Magazine is an American general audience science magazine launched in October 1980 by Time Inc. It has been owned by Kalmbach Publishing since 2010. ”

Academic Calendar: Spring 2017

March 06-10 (M-F)

Mid-Term Period

March 27 (M)

Last Day for All Withdrawals

March 30 (TH)

Summer 2017 Pre-Registration

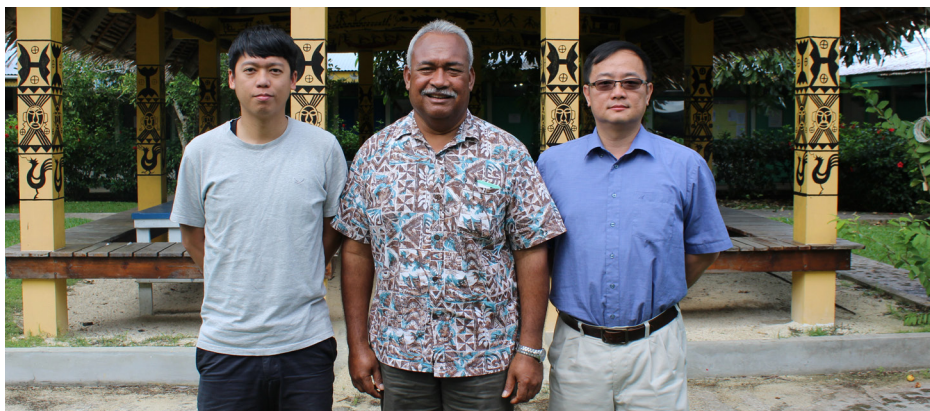
News/Stories Wanted

Mesekiu's News welcomes stories/articles/announcements from students, faculty, and staff. Submission deadline is Wednesday at 4:30 p.m. in hard and/or electronic copies to tchuziet@palau.edu or tchuziet@gmail.com.

Articles from MOC/PCC Alumni are also welcomed.

Please call 488-2470/2471 (extensions 251, 252, or 253) for more information.

NCCU Professor Meets With PCC Pres. Dr. Patrick Tellei



pictured left to right: Assistant to Dr. Kuan, Sra Manp Cividian ; PCC Pres. Dr. Patrick U. Tellei; and Associate Professor Dr. Kuan Da-Wei

A Professor from National Chengchi University in Taiwan, Dr. Daya Kuan (Kuan Da-Wei) visited PCC for a courtesy visit with PCC President Dr. Patrick Tellei. Associate Professor Dr. Kuan Da-Wei is accomplished academic and faculty member of the Department of Ethnology of National Chengchi University and teaches policies on Ethnos, Ethnic Geography, and Indigenous Spatial Studies. Ethnology, a branch of anthropology, is the study of various different peoples and the differences and relationships between them and their cultures and essentially what connects and separates people of different cultural background.

PCC Holds Annual Valentine's Bash

Palau Community College recently celebrated Valentine's Day with it's annual Valentine's Bash. The event was held on the Friday after valentines day, Friday February 17th on campus at the PCC cafeteria. Students and staff alike came together in friendship and community on this wonderful night in observation of the day that celebrates romance. As you can tell from the photo of these lovely young ladies pictured below, it was altogether a night full of laughter, merriment, and celebration.



Pictured from left to right: Dukor Ngiraiois, Tinaysha Techitong, Mie Iga, Kerrie Ngiraibai, Lani Vanderberg, Brenges Ucherkemur, and Kayoko Ellis.

PCC CAMPUS PROFILES

"GUESS WHO!"

RULES: GUESS THE PEOPLE FEATURED IN THE PHOTOGRAPH BELOW AND WIN A PRIZE COURTESY OF PCC DEVELOPMENT OFFICE



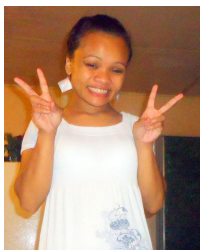
Palau Community College has continued to strive because of the dedication and commitment of its employees. The photograph above features seven (7) administrative members who have been employed at the college for many years. If you could identify all as well as their positions, the PCC Development Office will reward you. All students (except the students who are working for the Development Office) are eligible to attempt the challenge. Please visit the PCC Development Office to submit your answer or call tel: 488-2470/1 ext. 251, 252, or 253 for more information. An answer will be featured in the upcoming newsletter!

ALUMNI NOTES

SHARRISE NGIRAKED

(Class of 2012)

ASSOCIATE OF APPLIED SCIENCE - TOURISM AND HOSPITALITY



Ms. Ngiraked graduated with her AAS in Tourism and Hospitality and currently works as a Marketing Manager for Palau Visitors Authority, traveling often to promote Palau's beauty on behalf of PVA.



Mesekiu's News

Palau Community College

P.O. Box 9 Koror, Palau 96940

ALUMNI NOTES showcases MOC & PCC alumni who are positive role models and contribute to the quality of life in their local communities.

If you are that Alumna/Alumnus or know someone who is, please contact the PCC Development Office at telephone numbers 488-2470/2471 (extensions 251, 252, or 253).

We would like to feature you in future *Mesekiu's News* issues.

New Contributors to the PCC Endowment Fund



Palau Community College (PCC) would like to recognize its newest Endowment Fund contributor, Keong Roduk. Ms. Roduk works in the Ministry of Education as an Educator at G.B. Harris Elementary school. Thank you, Ms. Roduk, for your contribution to Palau's only institution of higher learning! Your donation will help sustain the future stability and programs of Palau Community College.

30th Pacific Educational Conference from July 17 to July 21, 2017 at Koror, Palau

"Bedochel e Motekau el Kedul a Omesuub el Kirel a Klungioliir a Rengalek."
(Quality and Sustainability in Education for Student Success)

Celebrating Birthdays

Connie Madrangchar

February 25

Maireng Sengebau

February 26

Oliver Teblak

March 03



HAPPY BIRTHDAY!

VACANCY ANNOUNCEMENT

- (1) Air-Conditioning & Refrigeration Instructor
(Academic Affairs Office)
salary range: \$16,010 - \$28,280 per annum
- (2) Maintenance Technicians (4)
(Administration Department - Physical Plant)
salary range: \$8,155 - \$13,948 per annum
- (3) Counselor
(Student Life & Housing Office)
salary range: \$12,653 - \$19,479 per annum
- (4) Counselor
(PCC Adult High School)
salary range: \$12,049 - \$20,607 per annum
- (5) Secretary
(Academic Affairs Office)
salary range: \$9,892 - \$17,567 per annum
- (6) Admissions Counselor
(PCC Student Services Division)
salary range: \$12,049 - \$20,607 per annum
- (7) Security Service Officer
(Administration Department)
salary range: \$6,709 - \$11,475 per annum
- (8) Accounting Technician (Purchase Order Technician)
(Administration Department - Business Office)
salary range: \$9,913 - \$16,954 per annum

For application forms and information, contact Harline Haruo at the PCC Human Resources Office at 488-2470/2471 extension 227, or e-mail: hr@palau.edu, or download forms at <http://pcc.palau.edu>.

"PCC is an Equal Opportunity Employer."

PCC Endowment Fund

INVEST IN THE FUTURE
OF OUR STUDENTS, OUR COLLEGE, AND OUR NATION

**TO SUPPORT,
CONTACT US TODAY!**

P.O. BOX 9 Koror, Palau 96940

Phone: 488-2470/2471 (ext. 251/253)

e-mail: tellei@palau.edu

If you want to join the Bi-Weekly
Allotment Program, contact us NOW!

FIND PCC ONLINE FOR MORE INFORMATION



<http://pcc.palau.edu>



Palau Community College - PCC

stamp here