

FREE!!!



Palau Community College MESEKIU'S NEWS



Friday, March 31, 2017

Weekly Newsletter

Volume 19, Issue 13

PCC Celebrates 24th Charter Day President's Run & Walk



Left to right: Dean of Student Services, Sherman Daniel, 1st place male walker, Thomas Hayes, 2nd place female walker, Shelley Ueki, and 2nd place male walker, Jonathan Bradshaw

On March 31, 2017 Palau Community College (PCC) celebrates its 24th Charter Day. The Annual Charter Day President's Run & Walk event is held to commemorate the founding day of the college. Registration for the event was held at the PCC basketball court. Runners began at the basketball court and ran to the Palau Pacific Resort (PPR) before returning. Walkers walked to the President of the Republic of Palau's Office in Meyuns before returning. About two hundred runners & walkers registered for the event. All participants of the event were treated to a complimentary breakfast courtesy of PCC. The college would like to recognize the top three male and female runners and walkers. For Male Runners: 1st place Aaron Salvador, 2nd place Miles Hasugulmong, 3rd place Jermine Pereda and Male Walkers: 1st place Thomas Hayes, 2nd place Jonathan Bradshaw, and 3rd place Datorieng Sumor. And for Female Runners: 1st place Ivy Tejada, 2nd place Imee Delos Santos, 3rd place Franzia Veron. Female Walkers: 1st place Pioria Koshiba, 2nd place Shelley Ueki, and 3rd place Lola Ngemaes. PCC extends its congratulations to all participants who completed the course. CONTINUE PAGE 3

ROC-Taiwan Ambassador visits

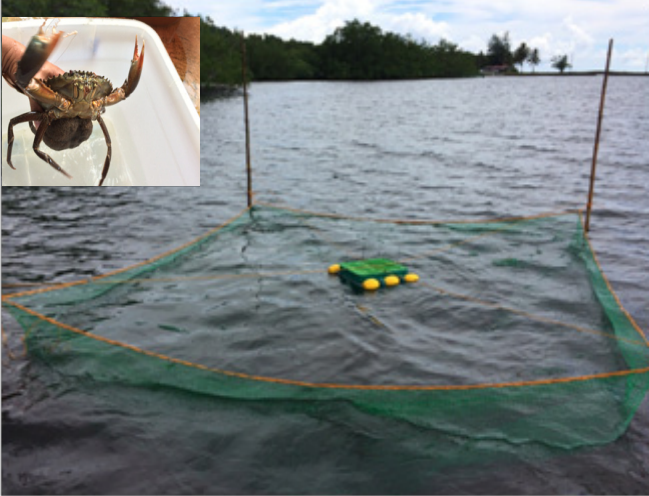


Inset: PCC Special Presentation, Left to Right: Dean of CE, Willy Wally, Todd Ngiramengior, Vice President of CRE, Thomas Taro, ROC-Taiwan Ambassador Michael Y.K. Tseng, PCC President, Patrick U. Tellei, Vice President of Adm. & Finance, Jay Olegeriil, Dean of Academic Affairs, Robert Ramarui, Dean of Student Service, Sherman Daniel, and 2nd Secretary, Jerry Liu

On Thursday, March 23, 2017 His Excellency, Ambassador Michael Y.K. Tseng and 2nd Secretary, Mr. Jerry Liu visited the campus of Palau Community College (PCC). Ambassador Tseng met with PCC President Dr. Patrick U. Tellei, Vice President of Administration and Finance, Jay Olegeriil, Vice President of CRE, Thomas Taro, Assistant to the President, Todd Ngiramengior, Dean of Academic Affairs, Robert Ramarui, Dean of Student Services, Sherman Daniel, and Dean of Continuing Education, Willy Wally and was updated by President Patrick U. Tellei through a special presentation on college programs and services.

Mangrove Crab Seed Bank at PCC-CRE

contributed by PCC Cooperative Research and Extension (CRE)



Inset: Berried mangrove crab, Newly installed seed bank at PCC CRE Hatchery in Ngeremlengui

To address the diminishing stock of mangrove crabs (*Scylla serrata*) locally known as “chemang” in Palau waters, the Palau Community College Cooperative Research and Extension in collaboration with the Ngeremlengui State Rangers had recently installed a mangrove crab seed bank in one of the mangrove conservation areas located in Ngeremlengui State. This was done following the recommendations from the representatives and researchers from the Embassy of Thailand in February 2017. During their presentation at PCC, the Thailand crab band representatives and researchers recommended the establishment of “crab bank” to help enhance the mangrove crab fishery by allowing the captured berried crabs to release their seeds to the wild before they are sold to the market. To initiate this project, the Thai Embassy donated 2 sets of 5mx5m net cages including ropes and plastic containers that will be used to hold the berried crabs in the water before release their hatched larvae. On March 9, 2017 a berried crab that spawned at PCC CRE hatchery carrying about 6 million eggs was placed inside the crab seed bank a day before the eggs are expected to hatch. On the very next day, about 3 million newly hatched mangrove crab zoea were released to the wild. The remaining crab zoea were utilized for stocking in the hatchery tanks for crablet production. PCC CRE continues to use the same method to hatch and release mangrove crab eggs in support the restocking effort to the wild.

WORKFORCE INNOVATION & OPPORTUNITY ACT

TITLE I OFFICE (WIOA OFFICE)

REPUBLIC OF PALAU

PHONE: (680) 488-2513

FAX: (680) 488-5699

2017 SUMMER YOUTH EMPLOYMENT PROGRAM

ANNOUNCEMENT

SUBED

Tia subed el mo er a rokui el ngeasek el rekrir a ngara 14 years old el mo 21 years old el ngara skuul (in school), ma rengeasek el rekrir a ngara 16 years old el mo 24 years old el diak el ngara skuul, malechub ete mla tuobed ra skuul e diak loureor ma diak el ngara college (out of school) el kmo: A obis ra WIOA a mla mengai a chesmerel el kirel a ngeiul/omerellel a application forms ra 2017 Summer Youth Employment and Training Program el lomuchel ra April 03, 2017 el mo lmuut ra May 19, 2017. Tirkel rokui el ngeasek el semeriar el mo mesuub a roel a betok el ureor, a sebechir lomekedong el mer tial obis el dengua er ngii a 488-2513 mete ngmai a mui ma komakai lomesodel tial program. A obis ra WIOA a nglai a chesmerel ra kot lureor el mo ongeim lureor ra temel a ureor ra amt el 7:30 am el mo 4:30 pm.

Note: Tirkel rokui el ngeasek el semeriar el me apply ra WIOA a kirir el mei lolab a ikal beldukl er iou:

- ➡ Verification of Age: (Bring either one of these: birth certificate, passport, or identification card)
- ➡ Check stubs of both parents/guardians if employed, SS/Pension Plan if applicable, and/or verification of income; example: subsistence/self employment (makit, etc.)
- ➡ 3rd Quarter report card or high school diploma if high school graduate.
- ➡ Palauan social security card

Alsekum a ngalek a ngariou a rekil ra 18, eng kirel mer obis lobengkel a delal, demal, malechub eng kel chad loungerachel er ngii el sebechel saing ra application ra ngalek. Ngidil ngeasek el diak lolab a ikal beldukl er bab el babier el mei, a mo diak el sebechel mo cherrungel el mekedmokl a babilngel.

Uleklatk: Tirkel ngalek el milngilt el mo oureor er tial mlo merek el rak a kuk mo lengull, e kid a mesterir a techall tirkel dirkak a tal lenga ra program.

U.S. ARMY ASVAB REGISTRATION & TESTING



MONDAY, APRIL 03, 2017: SIGN UP @ 1:00PM

TUESDAY, APRIL 04, 2017: ASVAB TEST @ 12:00PM

WEDNESDAY, APRIL 05, 2017: ASVAB TEST @ 12:00PM

THURSDAY, APR 06, 2017: ASVAB TEST @ 12:00PM

**SIGN-UP & TESTING WILL BE HELD AT ASSEMBLY HALL*

BITS AND PIECES...

Tan Siu Lin PCC Library

Hours of Operation

Monday to Thursday	7:30AM - 7PM
Friday	7:30AM - 5PM
Saturday	9AM - 6PM
Sunday	CLOSED

For more information, call:
488-3540

AVAILABLE TO INTERESTED READERS: SCUBA-DIVING MAGAZINE



"Scuba-Diving Magazine publishes articles about scub-diving sites, reviews of diving equipment, pieces marine life, and travel advice. The magazine also includes photographs of world renowned dive sites and scenic views of underwater life."

Academic Calendar: Fall 2015

March 31 (F)

Charter Day Celebration

April 13-14 (TH-F)

Student's Spring Break

May 04 (TH)

Last Day of Instruction

May 05 (F)

Holiday: Senior Citizens' Day

News/Stories Wanted

Mesekiw's News welcomes stories/articles/announcements from students, faculty, and staff. Submission deadline is Wednesday at 4:30 p.m. in hard and/or electronic copies to dilubch@gmail.com or tchuziet@gmail.com.

Articles from MOC/PCC Alumni are also welcomed.

Please call 488-2470/2471 (extensions 251, 252, or 253) for more information.

CHARTER DAY CONTINUED FROM PAGE 1

PCC would also like to thank all of its Associated Student of Palau Community College (ASPCC) officers and representatives, and the college faculty for spearheading this year's President's Run and Walk event. The college also extend its thanks to all members of the community who joined in the Run & Walk adding to the spirit of the day. Without your support, the event would not have been successful.

The 24th Charter Day marks the transition date of the Micronesian Occupational College into Palau Community College. Since 1993, PCC has continued to help students in Palau and the region of Micronesia reach their potential by providing quality education programs and services. PCC remains Palau's only institution of higher learning that produces students who contribute to their communities.



Participants warming up



Staff and students manning the water station in Meyuns

MAKE WATER SAFE

Adding some bleach helps make water safe to use.

If tap water is clear:

1. Use bleach that does not have an added scent (like lemon)
2. Add 1/8 TEASPOON (8 drops or about 0.75 milliliters) of household liquid bleach to each gallon (16 cups) of water
3. Mix well and wait for 30 minutes or more before drinking

If tap water is cloudy:

1. Use bleach that does not have an added scent (like lemon)
2. Add 1/4 TEASPOON (16 Drops or about 1.5 Milliliters) of household liquid bleach to each gallon (16 Cups) of water
3. Mix well and wait for 30 minutes or more before drinking

Remember that containers may need to be sanitized before using them to store safe water:

1. Use bleach that does not have an added scent (like lemon)
2. Add 1 TEASPOON (64 Drops or about 5 Milliliters) of household liquid bleach to a quart (32oz., 4 Cups, or about 1 Liter) of water
3. Pour this into a clean storage container and shake well, making sure that the solution coats the entire inside of the container
4. Let it sit for at least 30 seconds and then pour out the solution
5. Let air dry or rinse with clean water that has already been made safe

Never mix bleach with ammonia or other cleaners.

Open windows and doors to get fresh air when you use bleach.

PCC CAMPUS PROFILES

GUESS WHO! CHALLENGE WINNER



Congratulations to the winner of last weeks news-letter challenge "Guess Who!", Ms. Baleria Melairei correctly named all of the people in the photo below including their job titles. Ms Melairei received a prize of a \$10 Airtime card for providing the correct answers from the Development Office.



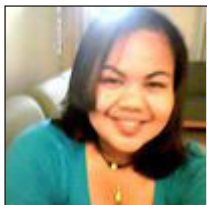
Left to Right: Veronica Sengebau, Lorenza Joseph, and Virginia Ikeya

PCC ALUMNI PROFILES

ASHLEY UMETARO

(Class of 2012)

ASSOCIATE OF ARTS - LIBERAL ARTS



Ashley Umetaro graduated from PCC with an AA Degree in Liberal Arts. She is currently working at Social Security Administration as a Compliance and Collection Representative. Ms. Umetaro plans to continue her education at University of Guam.



Mesekiu's News

Palau Community College

P.O. Box 9 Koror, Palau 96940

showcases MOC & PCC alumni who are **ALUMNI NOTES** positive role models and contribute to the quality of life in their local communities.

If you are that Alumna/Alumnus or know someone who is, please contact the PCC Development Office at telephone numbers 488-2470/2471 (extensions 251, 252, or 253).

We would like to feature you in future *Mesekiu's News* issues.

New Contributor to the PCC Endowment Fund



Palau Community College (PCC) would like to recognize its new endowment fund contributor, David Dengokl. Mr. Dengokl is currently working at Palau Public Utility Corporation, Water Distribution. Thank you, Mr. Dengokl for contributing to Palau's only institution of higher learning! Your donation will help sustain the future stability and programs of Palau Community College.

30th Pacific Educational Conference

from July 17 to July 21, 2017 at Koror, Palau

"Bedochel e Motekau el Kedul a Omesuub el Kirel a Klungiolor a Rengalek"

"Quality and Sustainability in Education for Student Success"

Celebrating Birthday

Richard Saburo



April 03

HAPPY BIRTHDAY!

VACANCY ANNOUNCEMENT

- (1) Air-Conditioning & Refrigeration Instructor
(Academic Affairs Office)
salary range: \$16,010 - \$28,280 per annum
- (2) Maintenance Technicians (4)
(Administration Department - Physical Plant)
salary range: \$8,155 - \$13,948 per annum
- (3) Counselor
(Student Life & Housing Office)
salary range: \$12,653 - \$19,479 per annum
- (4) Counselor
(PCC Adult High School)
salary range: \$12,049 - \$20,607 per annum
- (5) Secretary
(Academic Affairs Office)
salary range: \$9,892 - \$17,567 per annum
- (6) Admissions Counselor
(PCC Student Services Division)
salary range: \$12,049 - \$20,607 per annum
- (7) Security Service Officer
(Administration Department)
salary range: \$6,709 - \$11,475 per annum
- (8) Accounting Technician (Purchase Order Technician)
(Administration Department - Business Office)
salary range: \$9,913 - \$16,954 per annum

For application forms and information, contact Harline Haruo at the PCC Human Resources Office at 488-2470/2471 extension 227, or e-mail: hr@palau.edu, or download forms at <http://pcc.palau.edu>.

"PCC is an Equal Opportunity Employer."

PCC Endowment Fund

INVEST IN THE FUTURE

OF OUR STUDENTS, OUR COLLEGE, AND OUR NATION

To SUPPORT, CONTACT US
TODAY!

P.O. BOX 9 Koror, Palau 96940

Phone: 488-2470/2471 (ext. 251/253)

e-mail: tellei@palau.edu

If you want to join the Bi-Weekly Allotment Program, contact us NOW!

FIND PCC ONLINE FOR MORE INFORMATION



<http://pcc.palau.edu>



Palau Community College - PCC

stamp here