

FREE!!!



Palau Community College

MESEKIU'S NEWS



Friday, June 23, 2017

Weekly Newsletter

Volume 19, Issue 25

Upward Bound Summer Work Study Program Begins



Upward Bound Program summer work study students

On June 5, 2017, the Upward Bound Summer Work Study program began with a total of eighty-eight (88) students. Each student were placed in various offices of the national government, non-profit organizations and Palau Community College (PCC). UB work study students are also enrolled in summer preparatory classes such as English, Math, and foreign language. The purpose of the program is to expose students to various work place and to learn basic work etiquette, office management, and communication.

The Upward Bound Program is a federally funded program under the U.S. Department of Education with a purpose of providing college preparatory courses and academic support for high school students from low income household and first generation student in which both parents do not hold a bachelor's degree. The Upward Bound Program aims to assist all student participants to obtain high school diploma, enroll in a post-secondary education of their choice, and graduate with college degree.

Caregivers Graduate from Program



A group of certified caregivers with instructors and guests during the award ceremony at PCC

The fifth group of caregivers was certified after completing the Care-Giving Program at Palau Community College (PCC) on June 16, 2017. A total of 14 caregivers were awarded: Joyce Isechal, Joyce M. Ngirachitei, Philemon Ngirarikel, Jello T. Aguaras, Glenda M. Santos, Mila Esmeralda Taboso, Johnson R. Nagata, Everley B. Layog, Erica Jeanne C. Mascardo, Miyeko Takeshi, Tessy Nobuo, Minora Renguul, Shunrang Dionne Oldiais, and Inez Remengsau. Present to witness and grace the awarding ceremony were PCC President Dr. Patrick U. Tellei, Dean of Continuing Education Willy Wally, and Palau's Minister of Health and member of PCC Board of Trustees, Dr. Emalis Roberts, and Health Coordinator for Pacific Island Health Officers Association, Dr. Gregory Dever. The program's instructors, Dr. Sylvia Osarch and Amos Solomon, were also present. In a collaborative effort with the Ministry of Health,

CAREGIVERS, CONTINUED ON PAGE 2

Palau Community College is an accessible public educational institution helping to meet the technical, academic, cultural, social, and economic needs of students and communities by promoting learning opportunities and developing personal excellence.

General Construction Academy Meeting



Inset: PCC President Dr. Patrick U. Tellei, parents and students during General Construction Academy meeting

On Tuesday, June 20, 2017 Palau Community College hosted a meeting with parents of eight graders from various elementary schools in Palau about the proposed General Construction Academy program. Present to provide information to parents about this unique program at PCC for eight graders and soon-to-be freshmen in high school is PCC President, Dr. Patrick U. Tellei.

President Tellei reiterated that the program will run for four (4) years with a cohort of 15-18 students enrolled in scheduled classes including laboratory hours. The program will also include job visits and work-site practical demonstrations.

Caregivers CONTINUED FROM PAGE 1

Palau Community College (PCC) is providing a basic care-giving training program. The model for the program was provided by Dr. Ritabelle Fernandes of the Geriatric Education Center at John A. Burnes School of Medicine in Hawaii. Geriatrics is a field of medicine that deals with the healthcare of elderly individuals.

Participants of the Care-Giving Program are taught by volunteer instructors who are certified nurses, physical therapists, and psychiatrists. The training session spans about two weeks in which a module is taught each week night. Each module covers a different aspect of caregiving such as proper way to prepare meals for a patient, personal hygiene, and different illnesses that may plague a patient. In addition, trained caregivers learn how to deal with the emotional and physical stresses of the occupation.

During the awarding ceremony, PCC President Tellei and Minister Roberts congratulated all the newly certified caregivers for their achievement. Minister Roberts recognized the importance of such a program, especially in terms of medical assistance for public. He also stressed the need to have the future trainings conducted in other states of Palau. He also reemphasized that the Ministry of Health is in full support of such training program and will continue to assist in providing much needed instructors, mentors, and training modules for individuals interested in caregiving.

The Caregiving Program began in June 12, 2017. Another group will begin training on June 26, 2017. The Caregiving Program is free of charge and open to any person interested in learning how to properly care for the bed-ridden individuals.



As part of ongoing "Join the Team and Keep PCC Clean" initiative, PCC Maintenance and students did a great work on our college sign board.

CAREGIVING



Palau Community College is happy to inform the public that it will be offering two sessions of complimentary Caregiving Training for interested individuals who need the skills to help themselves and the love ones they provide care for.

The following is the training schedule:

□ Session 1:

WHEN: June 12 to June 15, 2017

TIME: 6pm to 8pm

WHERE: CE Training Room, PCC

□ Session 2:

WHEN: June 26 to June 30, 2017

TIME: 6pm to 8pm

WHERE: CE Training Room, PCC

— The registration is open now until June 16, 2017. —

Anyone interested is welcome to come in and register or call Telngai Chiokai at 488 6223 for more information. Mesulang!

BITS AND PIECES...

Tan Siu Lin PCC Library

Hours of Operation

Starting from June 12-July 31, 2017

Monday to Friday	7:30 ^{AM} - 7 ^{PM}
Saturday	9:00 ^{AM} - 6 ^{PM}
Sunday	CLOSED

For more information, call:
488-3540

AVAILABLE TO INTERESTED

READERS:

THE ECONOMIST MAGAZINE



The Economist is a bi-monthly magazine of ideas, culture and lifestyle. Aimed at the globally curious, every issue includes in-depth features, as well as culture, design, technology, travel, style, food and drink, and body and mind.

Academic Calendar: Summer 2017

June 30 (F)

Last Day of Instruction

July 3-4 (M-T)

Exam Period

News/Stories Wanted

Mesekiu's News welcomes stories/articles/announcements from students, faculty, and staff. Submission deadline is Wednesday at 4:30 p.m. in hard and/or electronic copies to tchuziet@palau.edu or tchuziet@gmail.com.

Articles from MOC/PCC Alumni are also welcomed.

Please call 488-2470/2471 (extensions 251, 252, or 253) for more information.



Alii!

Asia Pacific Association for Fiduciary Studies (APAFS), in partnership with fi360, is pleased to announce a formal fiduciary training program specifically designed for investment stewards to be held in the Republic of Palau.

What is the curriculum?

The Fiduciary Essentials® Training Program (FE®) is a one day classroom-based course, designed and instructed by fi360, the globally recognized leader in investment fiduciary education, which covers all of the components of a comprehensive investment process and related standards of care. Successful completion of the program is recognized by the awarding of a Certificate of Completion and allows interested participants to apply for membership in the Fiduciary Academy™. Ross Fowler, AIFA®, President, fi360 Pacific will instruct the course.

Who will benefit from participating?

- Legislators
- Fund Sponsors
- Fund Trustees, Directors & Administrators
- Investment Committee Members
- Accountants, Auditors, Lawyers

Why should you participate in the FE® Training Program?

- Take advantage of the APAFS negotiated discount from FI360
- No travel related expenses incurred by having to travel off-island to attend the course
- Prepare interested fiduciaries for the Accredited Investment Fiduciary (AIF®) Training Course to be held in Manila, Philippines in December in conjunction with the 17th annual Pacific Region Investment Conference.

When? Thursday, July 13, 2017

Where? Palau Royal Resort, Koror, Palau

Cost? \$800 per registrant, which will include continental breakfast, lunch and all course materials. Group discounts may be available for organizations registering in excess of five registrants. Registrants from paid-up APAFS Institutional Members are entitled to a \$50 discount.

For interested registrants, attendance to the July 14, 2017 APAFS Palau Investment Conference is also included. This one day conference will address topics of interest to fiduciaries. Please refer to the attached Investment Conference Flyer for details.

Please contact admin@apafs.org with any questions, or to register for the Fiduciary Essentials® Training Program and/or the Investment Conference. Seats are limited, so don't wait!



PCC CAMPUS PROFILES

GUESS WHO!

RULES: GUESS THE PEOPLE FEATURED IN THE PHOTOGRAPH BELOW AND WIN A PRIZE COURTESY OF PCC DEVELOPMENT OFFICE



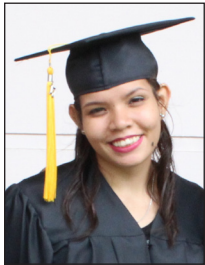
Palau Community College has continued to strive because of the dedication and commitment of its employees. The photograph above features four (4) staff members who have been employed at the college for many years. If you could identify all as well as their positions, the PCC Development Office will reward you. Only PCC students (except the students who are working for the Development Office and PCC employees) are eligible to attempt the challenge. Please visit the PCC Development Office to submit your answer or call tel: 488-2470/1 ext. 251, 252, or 253 for more information. An answer will be featured in the upcoming newsletter!

ALUMNI NOTES

MARY CATHERINE WILEY

(Class of 2017)

ASSOCIATE OF SCIENCE - BUSINESS ACCOUNTING



Mary Catherine Wiley graduated from PCC in May 2017 with an AS Degree in Business Accounting. She currently works at Donut House as a Cashier. Ms. Wiley will be attending school in University of Guam (UOG) this coming Fall 2017.



Mesekiu's News

Palau Community College

P.O. Box 9 Koror, Palau 96940

ALUMNI NOTES showcases MOC & PCC alumni who are positive role models and contribute to the quality of life in their local communities.

If you are that Alumna/Alumnus or know someone who is, please contact the PCC Development Office at telephone numbers 488-2470/2471 (extensions 251, 252, or 253).

We would like to feature you in future *Mesekiu's News* issues.

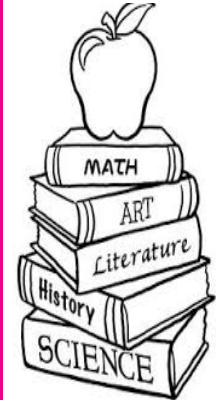


PCC Library Summer Activities

Children Ages between 7-12

Activities

- Book Making
- Arts & Crafts
- Reading & Discussion
- Math fun Game
- Spelling Game
- Learning online catalog
- Scavenger Hunt
- Create your own book
- Movie



When: July 3-7, 2017

Time: 9-11am

1-3pm

Place: PCC Library

Sign up @ PCC Library before June 28, 2017

For more Information

Call 488-3540

Celebrating Birthday

Evangeline Andrew

June 28

Amanda N. Ebas

July 2



HAPPY BIRTHDAY!

VACANCY ANNOUNCEMENT

- (1) Air-Conditioning & Refrigeration Instructor
(Academic Affairs Office)
salary range: \$16,010 - \$28,280 per annum
- (2) Maintenance Technicians (4)
(Administration Department - Physical Plant)
salary range: \$8,155 - \$13,948 per annum
- (3) Secretary
(Academic Affairs Office)
salary range: \$9,892 - \$17,567 per annum
- (4) Admissions Counselor
(PCC Student Services Division)
salary range: \$12,049 - \$20,607 per annum
- (5) Security Service Officer
(Administration Department)
salary range: \$6,709 - \$11,475 per annum
- (6) Accounting Technician (Purchase Order Technician)
(Administration Department - Business Office)
salary range: \$9,913 - \$16,954 per annum

For application forms and information, contact Harline Haruo at the PCC Human Resources Office at 488-2470/2471 extension 227, or e-mail: hr@palau.edu, or download forms at <http://pcc.palau.edu>.

"PCC is an Equal Opportunity Employer."

PCC Endowment Fund

INVEST IN THE FUTURE
OF OUR STUDENTS, OUR COLLEGE, AND OUR NATION

**To SUPPORT,
CONTACT US TODAY!**

P.O. BOX 9 Koror, Palau 96940

Phone: 488-2470/2471 (ext. 251/253)

e-mail: tellei@palau.edu

If you want to join the Bi-Weekly Allotment Program, **contact us NOW!**

FIND PCC ONLINE FOR MORE INFORMATION



<http://pcc.palau.edu>



Palau Community College - PCC

stamp here