

FREE!!!



Palau Community College

MESEKIU'S NEWS



Friday, July 28, 2017

Weekly Newsletter

Volume 19, Issue 30

PCC Hosted WIOA Summer Youth Employment Program



Left to Right: Executive Assistant to the President Todd Ngiramengior, Dean Sherman Daniel, WIOA Summer Youth Employment participants, PCC President Patrick U. Tellei, and Dean Robert Ramarui

On Friday July 14, 2017 Palau Community College (PCC) hosted Workforce Innovation & Opportunity Act (WIOA) Summer Youth Employment Program. The focus of the Summer Youth Employment Program is to increase the long-term academic and occupational learning opportunities and work experience. Work experience are structured and guided by supervisors to enhance participants learning experience in career and skill development. The youth employment program may take place in the private businesses, non-profit organizations, or government sector. Students in Palau's elementary and high schools including PCC who are between ages 14-24 are eligible for this program. This summer, fourteen students spent 6 weeks in various offices of the college working to gain experience while at the same time learned valuable work ethics. Students participants are Delia Rae Joseph, Dilmereng S. Wilson, Henaro Ngirailild Jr., Ikelau Berenges Misech, Jared Pukana Chilton, Kesiil Pohai Thomas, Mally Tkel, Ryan S. Kalbesang, Tem Luis Johanes, Tomoko Asanuma, Uldekel Adora Ililau, Vetat Itab Jesus, Zoe Juliana Kintaro, Tiffany N. Salvador. Present to award participant certificates were PCC President Dr. Patrick U. Tellei; Dean of Academic Affairs, Robert Ramarui; Dean of Student Service, Sherman Daniel; and Executive Assistant to the President, Todd Ngiramengior.

PCC Hosted PPEC Summer Meeting

On July 15-16, 2017 Palau Community College hosted Pacific Postsecondary Education Council (PPEC) meeting at PCC Assembly Hall. PPEC is a non-profit, public corporation established in 1981 consisting of presidents and chancellors from higher education institutions in the United States of America as well as nations in the Pacific affiliated with the United States. The council meet regularly to address concerns and needs of Pacific island post-secondary institutions and also provides network in which they can share & discuss education topics. Current members include higher education institutions from Hawaii, American Samoa, FSM, the Republic of the Marshall Islands (RMI), Guam, the Commonwealth of the Northern Mariana Islands (CNMI), and Palau.



(left to right): Vice Chancellor of Research at UH Manoa, Dr. Michael Bruno, Chancellor at Kapiolani Community College, Loise Pagotto, PCC President Dr. Tellei, Executive Director PPEC, Esther Muna, Interim Vice President of Instructional Affairs, Ms. Karen Simion, Dr. Rachel Solemsaas, ASCC President, Dr. Rosevonne Pato, President of CMI, Dr. Theresa Koroivulaono, & UOG President Dr. Robert Underwood

Palau Community College is an accessible public educational institution helping to meet the technical, academic, cultural, social, and economic needs of students and communities by promoting learning opportunities and developing personal excellence.

Livestock Forum held at PCC



Inset: Vice President of CRE, Thomas Taro; Left to Right: Director of Bureau of Agriculture, Fred Sengebau; ROC-Taiwan Embassy, Jason Huang; and National Development Bank of Palau Representative, Harley Fletcher

On July 27, 2017 Palau Community College hosted the Livestock Forum with this year's theme "Our Food Security Depends on Palauan Farmers". The forum took place at PCC Assembly Hall with forty-two participants from local businesses in piggery farming, interested community members, and non government agency personnel. This one day forum brought stakeholders and policymakers from Bureau of Agriculture at Ministry of Natural Resources, Environment, and Tourism, National Development Bank of Palau, Palau Small Business Development Center, ROC Taiwan Embassy, Palau Organic Growth Association, Palau Environmental Quality Protection Board, Division of Environmental Health at Ministry of Health and PCC Cooperative Research and Extension to discussed Piggery Farming in Palau. The forum topics presented include: Piggery Business Services, Piggery Production: supply and demand, Agriculture and Aquaculture low interest loans available for local businesses, State government, and interested individual, Business Plan for piggery farming, Slaughterhouse information and updates, EQPB permit, Environmental Health Regulations, and Certification criteria and draft legislation. The purpose of the forum was to support local piggery industry and provide feedback to improve current local piggery businesses. The forum also support the United Nation's Sustainable Development Goals such as food security and promotion of sustainable agriculture (SDG #2) and sustainable consumption and production pattern, (SDG #12). In Closing, Governor of Ngiwal State, Mr. Ellender Ngirameketii pledge full support to the forum and thank the organizers for the information provided.

Taiwan Culinary Workshop Conclude

On July 25-27, 2017 Palau Community College hosted a three-day workshop on Taiwan culture and culinary at PCC Cafeteria. The workshop participants first got a glimpse of Taiwan culture and culinary through video presentation. The second part of the workshop introduced the participants to making Taro Boba and dumplings with various ingredients and the last segment of the workshop was the cooking competition where participants work in groups to come up with their healthy and delicious entry. PCC Mandarin instructor, Ms. Hua Shin was the workshop instructor and mentor throughout the three-day workshop. Taiwanese cooking is a branch of Chinese cuisine, so meals tend to be based around white rice, while pork is the most commonly eaten meat. Chicken is common; beef is enjoyed, except by the small portion of the population who for traditional (rather than religious) reasons never consume it. Noodles are popular and made from wheat or rice flour. Soup are served with almost every meal and most Taiwanese food are seldom spicy.



Taiwan Culture & Food Workshop participants in their final dish competition

BITS AND PIECES...

Tan Siu Lin PCC Library

Hours of Operation

Starting from July 11- August 11, 2017

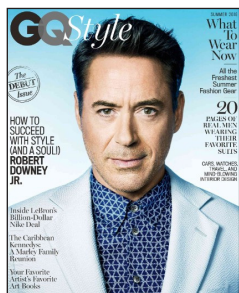
Monday to Friday	8:00 ^{AM} - 5 ^{PM}
Saturday	9:00 ^{AM} - 6 ^{PM}
Sunday	CLOSED

For more information, call:
488-3540

AVAILABLE TO INTERESTED

READERS:

GQ MAGAZINE



GQ is the authority on men. For more than 50 years, GQ has been the premier men's magazine, providing definitive coverage of style and culture. With its unique and powerful design, work from the finest photographers and a stable of award-winning writers, GQ reaches millions of leading men each month. The only publication that speaks to all sides of the male equation, GQ is simply sharper and smarter.

Academic Calendar: Spring 2017

July 24 (M) to August 9 (W)

Fall 2017 Registration

August 2-4 (W-F)

Placement Testing

News/Stories Wanted

Mesekiw's News welcomes stories/articles/announcements from students, faculty, and staff. Submission deadline is Wednesday at 4:30 p.m. in hard and/or electronic copies to tchuziet@palau.edu or tchuziet@gmail.com.

Articles from MOC/PCC Alumni are also welcomed.

Please call 488-2470/2471 (extensions 251, 252, or 253) for more information.

Book-Making Workshop at PCC



Ms. Margo Vitarelli & her young assistant Ms. Elchesel Sakuma, Lynn Polloi, PCC library staff and M.S.S teachers during book-making workshop held at Tan Siu Lin PCC Library

Palau Community College (PCC) Tan Siu Lin library was fortunate to have a short mini-bookmaking conducted by Margo Vitarelli and her little assistant, Ms. Elchesel Sakuma, on Tuesday, July 25²⁰¹⁷. Four library staffs from PCC along with four Maris Stella School (M.S.S) teachers were able to take this fun book-making workshop. With these new ideas and skills taught by Ms. Vitarelli, the PCC library staff will be able to use these ideas for future library summer activities. We would like to thank Ms. Vitarelli for taking time from her family to come and share with us some of her knowledge.

PCC 25th Anniversay Committee Created

On July 24, 2017 PCC President Patrick U. Tellei appointed members of 25th Anniversary Organizing and Implementation Committee. In his memorandum, President Tellei stated “2018 will mark the 25th years since the establishment of Palau Community College and to commemorate this milestone, this committee will be task to plan, organize, and implement activities that include Charter Day events.

The 25th Anniversary Organizing and Implementation Committee members are Dean Robert Ramarui Chairman; Dean Sherman Daniel Co-Chair; Executive Assistant to the President Todd Ngiramengior Co-Chair; Vice President of CRE Thomas Taro; ASPCC President or Designee; Director Tchuzie Tadao; Director Clement Kazuma; Frutoso Tellei, Husti Ulengchong, Stephanie Nakamura, Loyola Darius, Angelio Antonio, Director Uroi Salii, and Ezra Takeo.

The 25th Anniversary Organizing and Implementation Committee had its first meeting on Friday, July 28, 2017 to start with the planning and implement process on proposed activities and events that will be taken place. Chairman Ramarui initiated meeting including schedule of upcoming meetings.

PCC CAMPUS PROFILES

GUESS WHO! CHALLENGE WINNER



Congratulations to the winner of last weeks news-letter challenge "Guess Who!", Mr. Wade Kitalong correctly named all of the people in the photo below including their job titles. Mr. Kitalong received a prize of a \$10 Airtime card for providing the correct answers from the Development Office.



Left to Right: Dr. Yimnang Golbuu, Wilma Tmecherur, Thomas Taro, and Benjamin Ueda.

ALUMNI NOTES

DYLAN BEMERT

(Class of 2017)

ASSOCIATE OF APPLIED SCIENCE - AUTO MECHANICS TECHNOLOGY



Dylan Bemert graduated from PCC in May 2017 with an AAS Degree in Automotive Mechanics Technology. Mr. Bemert currently works at Surangel & Son's Co.



Mesekiu's News

Palau Community College

P.O. Box 9 Koror, Palau 96940

ALUMNI NOTES showcases MOC & PCC alumni who are positive role models and contribute to the quality of life in their local communities.

If you are that Alumna/Alumnus or know someone who is, please contact the PCC Development Office at telephone numbers 488-2470/2471 (extensions 251, 252, or 253).

We would like to feature you in future *Mesekiu's News* issues.

New Contributors to the PCC Endowment Fund



Newest Endowment Fund contributors:
Kayleen Joseph & Emadech Oiterong

of higher learning! Your donations will help sustain the future stability and programs of Palau Community College.

Palau Community College (PCC) would like to recognize its newest Endowment Fund contributors: Kayleen Joseph and Emadech D. Oiterong. The two new contributors work as Teachers for Koror Elementary School.

Thank you both for your contribution to Palau's only institution

Celebrating Birthdays

John J. Tasumwai	August 4
Jolene Joseph	August 4
Johvanna Yaoch	August 5
Kesina K. Tadao	August 5



HAPPY BIRTHDAY!

VACANCY ANNOUNCEMENT

- (1) Air-Conditioning & Refrigeration Instructor
(Academic Affairs Office)
salary range: \$16,010 - \$28,280 per annum
- (2) Maintenance Technicians (4)
(Administration Department - Physical Plant)
salary range: \$8,155 - \$13,948 per annum
- (3) Secretary
(Academic Affairs Office)
salary range: \$9,892 - \$17,567 per annum
- (4) Admissions Counselor
(PCC Student Services Division)
salary range: \$12,049 - \$20,607 per annum
- (5) Security Service Officer
(Administration Department)
salary range: \$6,709 - \$11,475 per annum
- (6) Accounting Technician (Purchase Order Technician)
(Administration Department - Business Office)
salary range: \$9,913 - \$16,954 per annum

For application forms and information, contact Harline Haruo at the PCC

Human Resources Office at 488-2470/2471 extension 227, or e-mail:

hr@palau.edu, or download forms at <http://pcc.palau.edu>.

"PCC is an Equal Opportunity Employer."

PCC Endowment Fund

INVEST IN THE FUTURE
OF OUR STUDENTS, OUR COLLEGE, AND OUR NATION

**TO SUPPORT,
CONTACT US TODAY!**

P.O. BOX 9 Koror, Palau 96940

Phone: 488-2470/2471 (ext. 251/253)

e-mail: tellei@palau.edu

If you want to join the Bi-Weekly Allotment Program, contact us NOW!

FIND PCC ONLINE FOR MORE INFORMATION



<http://pcc.palau.edu>



Palau Community College - PCC

stamp here