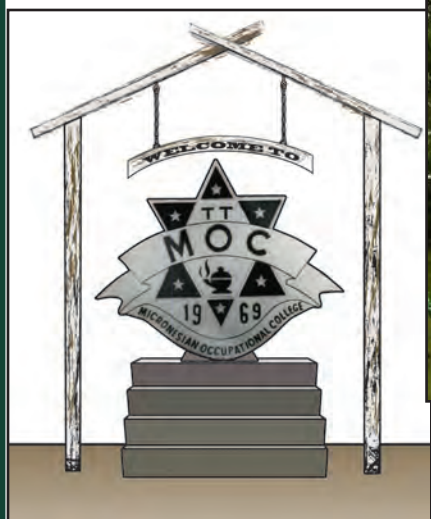


Palau Community College



2010 Personnel Directory



Accredited by the Accrediting Commission for Community and Junior Colleges (ACCJC)
of the Western Association of Schools and Colleges (WASC)

TABLE OF CONTENTS

Vision, Mission Statements and Unifying Principles	1
PCC Board of Trustees, Office of the President & Cabinet	2
Executive Committee	3
Academic Affairs Division	
School of Arts and Sciences, School of Business	4-6
School of Technical Education	7
Off Campus Adjunct Faculty	8-9
Student Services Division	
Admissions & Financial Aid	10
Registrar & Records, Student Life and Housing	11
Continuing Education Division (CE)	12
Educational Talent Search	13
Adult High School	14
Non-Instrumental Navigation	15
Library Resources Division	16
Cooperative Research and Extension (CRE)	17-18
Administration	
Office of the President, Human Resource Division	19
Development Office	20
Physical Plant, Campus Security	21-22
Food Services (Cafeteria)	23
Finance Division, Computer & Data Processing, Bookstore	24
Student Support Services (SSS)	25
Upward Bound Program (UB)	25
Upward Bound Math and Science Program (UBMS)	26
Operations and Maintenance Improvement Program (OMIP)	26
Belau Tourism Association (BTA)	26
Workforce Investment Act (WIA)	27
Palau Chamber Of Commerce	27
Community Advocacy Program (CAP)	28
Pacific Islands University (PIU)	28
Day Care Center	29
List of Board of Trustees, Executive Committee Members, Faculty,	
Professional Staff & Support Staff	30-37
PCC Contact Information	38
PCC Campus Map	39

Palau Community College
P.O. Box 9, Koror, Palau 96940
Tel: 488-2470/71 Fax: 488-2447
www.palau.edu

The Development Office acknowledges special recognition and appreciation to the Human Resource Division, notably Ms. Karen Mobel, the college Personnel Manager, for the information compiled in this publication. A *Thank You* to Ms. Teongel Ngiraikelau from Student Life and Housing for her last-minute assistance.

VISION STATEMENT- *Where We Want To Be*
We Guarantee Quality and Excellence!

MISSION STATEMENT- *Who We Are and What We Do*

Palau Community College is an accessible public educational institution helping to meet the technical, academic, cultural, social, and economic needs of students and communities by promoting learning opportunities and developing personal excellence.

UNIFYING PRINCIPLES- *How We Behave*

Semesemel a Ureor

Palau Community College Believes In:

Teamwork- Oba Tal Tekoi

Quality Services- Kot el Ngarbab Lomeruul

Open Communication- Diak a Berteled

Managing with Goals- Ulterkokl Olengcheled

Promoting Leadership- Olisichel a Kedul a Dereder

Integrity and Loyalty- Melemalt e Melangesmad

Community Ownership- Tekoi el Buai

Continuous Improvement- Ouelangch ra Klungiaol

Creativity and Innovation- Sebrakl, Ituuk, e Melasm a Tekoi

People & Respect for Others- Omengull ra Tang ma Tang el Chad

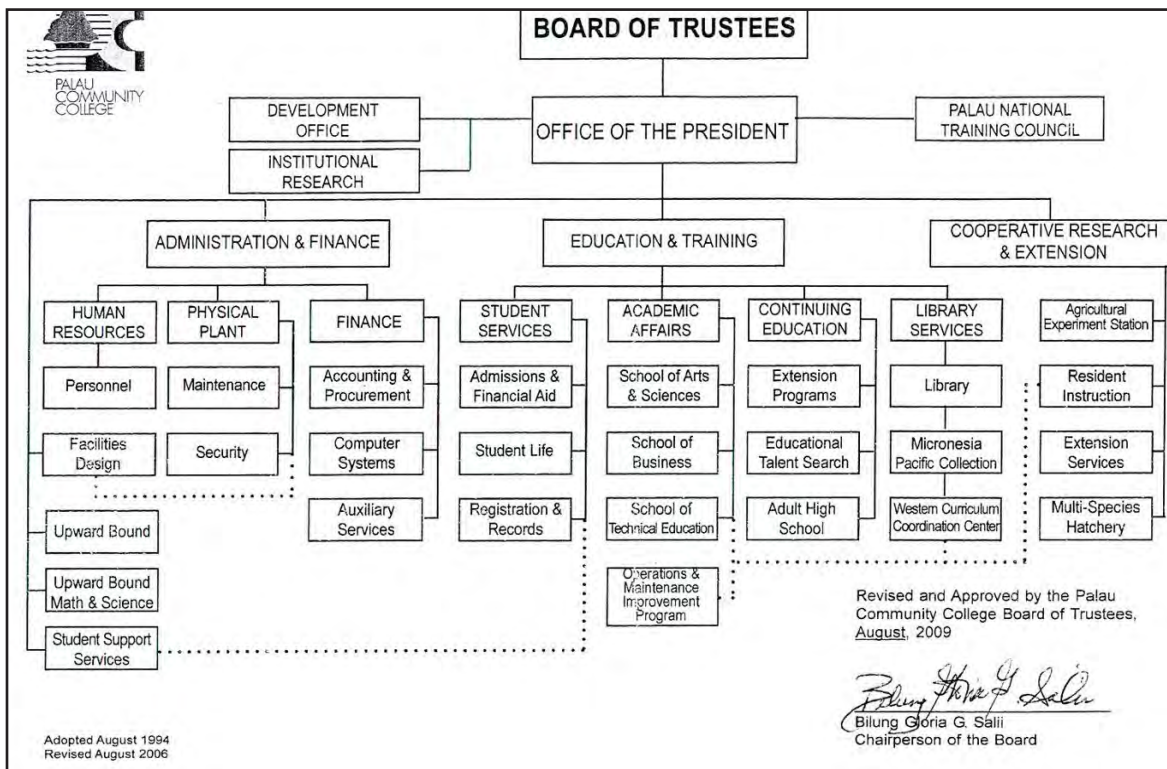
STRATEGIC DIRECTIONS 15-Year Institutional Master Plan (2009-2024)

Strategic Direction 1: Student Success

Strategic Direction 2: Institutional Culture

Strategic Direction 3: Resources

Strategic Direction 4: Culture of Evidence



PALAU COMMUNITY COLLEGE BOARD OF TRUSTEES

The Board of Trustees carries out the purpose of the institution and establishes institutional policies and delegates them to the chief executive officer of the college to administer and implement. It protects the institution from external pressures and provides stability and continuity to the institution.



*Bilung Gloria G. Salii
Chairperson*



*Masa-Aki N. Emesiochl
Vice Chair*



*Valeria Toribiong
Secretary/Treasurer*



*Emais Roberts, M.D.
Trustee*



*Buk Emil Ramarui
Trustee*



*Carmel Hanser
Student Trustee*

OFFICE OF THE PRESIDENT



*Patrick U. Tellei, EdD
President*

The President and his cabinet work together to develop both short and long-term plans, establish priorities, and provide the leadership to accomplish these plans through clearly defined goals and objectives.



*Jay Olegeriil
Vice President
Administration and Finance*



*Thomas Taro
Vice President
Cooperative Research
& Extension*

CABINET

EXECUTIVE COMMITTEE



Patrick U. Tellei, *EdD*
President
PCC



Jay Olegeriil
Vice President
Administration
and Finance



Thomas Taro
Vice President
Cooperative Research
& Extension



Todd Ngiramengior
Executive Assistant
to the President



Alvina Timarong
Dean
Academic Affairs



Marensia Edward
Dean
Student Services



William Wally
Dean
Continuing Education



Kuye Belelai
Project Director
Upward Bound
Program



Vernice Rechebei
Project Director
Student Support
Services



Tchuzie Tadao
Project Director
Upward Bound
Math & Science



Clement Kazuma
Director
Physical Plant



Laura Mangham
Director/Project Director
Learning Resources
Talent Search



Hilda Ngiralmu
Director
Student Life



Bruce Rimirch
Director
Computer & Data
Processing



Dahlia Katosang
Accreditation Liaison
Officer



Ligaya Sara
Institutional Research
Analyst



Tutii-Elbuchel I. Chilton
President
Faculty Senate
Association



Ephraim Ngirachitei
President
Classified Staff
Organization



Sasha Lirow
President
Associated Students
of PCC (ASPCC)



Jewish Ngirakelau
President-Elect
Associated Students
of PCC (ASPCC)

ACADEMIC AFFAIRS DIVISION

The Academic Affairs Division is responsible for all instruction and instructional programs including the administration of the schools within the college. The schools are: School of Arts and Sciences, School of Business, and School of Technical Education.



Alvina Timarong
Dean



Sherman Daniel
Associate Dean
School of Technical Education



Vincent Ito
Extension Program
Coordinator



Husto Ulengchong
Data Services Technician



Jade Kloulechad
Secretary



Charlette Y.K. Higa
Senior Clerk Typist

SCHOOL OF ARTS AND SCIENCES



Dr. Isebong Asang
English Professor



Megan Beard
Associate Professor
Library & Information Services



Howard Charles
Associate Professor
Music



Tutii- Elbuchel I. Chilton
Associate Professor
Social Science



Alex Gachalian
Associate Professor
Agriculture



Epimachus Moses
Associate Professor
Mathematics

SCHOOL OF ARTS AND SCIENCES



Gamberlyn S. Ngirmeriil
*Associate Professor
Science*



Marianne Temaungil
*Associate Professor
English*



Vernice Yuji
*Associate Professor
Science*



Margeline Buban
*Assistant Professor
Mathematics*



Damiana Kunihiro
*Assistant Professor
Nursing*



William T. Mitchell
*Assistant Professor
English*



Deikola Olikong
*Assistant Professor
Social Science/Education*



Joseph Pfalzer
*Assistant Professor
Mathematics*



Evangeline Andrew
English Instructor



Samantha Bells
Criminal Justice Instructor



Jemmy Blelai
Education Instructor



Ginger Tzu-Ching Chen
*Chinese (Mandarin) Language
Instructor*

SCHOOL OF ARTS AND SCIENCES



Michael Fedison
Science Instructor



Suzette G. Garcia
Drafting/Mathematics Instructor



Nena George
*Instructional Assistant II
Agriculture*



Reiko Kawamura
*Japanese Language
Instructor*



Rose A. Kohama
*Instructor Assistant
Mathematics*



Rennetta Meyer
*Instructor Assistant
English*



Tarmau T. Ngirmang
Nursing Instructor



Dolmii T. Remeliik
English Instructor

SCHOOL OF BUSINESS



Soledad Garcia
Assistant Professor, OHEC



Danka Ledgerwood
*Associate Professor
Office Administration*



Victoria Maui
*Associate Professor
Tourism & Hospitality*



Robert Ramarui
*Assistant Professor
Business*



Keiden Skilang
*Assistant Professor
Business*



Johvanna Yaoch
*Assistant Professor
Computer*

SCHOOL OF TECHNICAL EDUCATION



Sherman Daniel
Associate Dean



Joel Yabes
*Associate Professor
General Electronics Technology*



Ramon Garcia
*Assistant Professor
Air Conditioning &
Refrigeration*



Joshua Ngirngebedangel
*Assistant Professor, Small
Engine & Outboard
Marine Technology*



Elizabeth de Jong
Drafting Instructor



Frutoso Tellei
*Electrical Technology
Instructor*



Jerry Taroy
*Electrical Technology
Instructor*



Nobby Enano
*Automotive/Mechanics
Technology Instructor*



Lester Rekemesik
Carpentry Instructor



Rogelio Santos
*Welding/Auto-Body
Instructor*



Eugene Uehara
*Automotive/Mechanics
Technology Instructor*



Galindez Kiep
Instructional Assistant



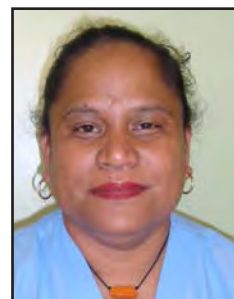
OFF CAMPUS ADJUNCT FACULTY



Simon Allen
Mathematics Instructor



Clara Maile Andreas
English Instructor



Merlyn Basilius
*Health/Physical Education
Instructor*



Vance Basilius
*Business Accounting
Instructor*



Eric Carlson
*Tourism & Hospitality
Instructor*



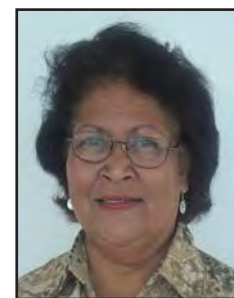
Bernice Elechuus
*Education & Information
Technology Instructor*



Edolem Ikerdeu
English Instructor



Janice Mathew
*Business Accounting
Instructor*



Elicita Morei
English Instructor



William Hayes Moses
*Criminal Justice
Instructor*



Maleli Nauluvula
*Computer Science
Instructor*



Clinton Ngemaes
*Information Technology
Instructor*

OFF CAMPUS ADJUNCT FACULTY



Sunny Ngirmang
Social Science Instructor



Natalia Rekemesik
Education Instructor



Appolonia Sasao
Education Instructor



Leoben Teriong
*Tourism & Hospitality
Instructor*



Masaharu Tmodrang
Social Science Instructor



Steven Victor
Science Instructor



Sween Yamada
*Science/Mathematics
Instructor*



Rosemary Mersai
*Conversational Japanese I
Instructor*



Fleming U. Sengebau
Science Instructor



Students in OnLine Class



Students in Class

STUDENT SERVICES DIVISION

The Student Services Division complements and supplements the Academic Affairs Division by offering programs and services that provides and facilitates opportunities for maximum personal growth and development for students.



Marensia Edward
Dean of Students



Verna Kyota
Secretary

ADMISSIONS & FINANCIAL AID

The Admissions & Financial Aid Office is responsible for student recruitment and enrollment to the college and administers the federal student financial aid program and Federal Work-Study Program.



Dahlia Katosang
Director



Elenita Brel
Work Study Coordinator



Mekreos Silil
Admissions Counselor



Marlyne Olkeriil
Financial Aid Technician



Maureen Renguul
Financial Aid Technician



Leona Tkel
Secretary



REGISTRAR & RECORDS



Lesley Adachi
Registrar



Teory Idechong
Secretary



Maria Lourdes Reksid
Administrative Assistant

STUDENT LIFE AND HOUSING

The Student Life and Housing is responsible for student counseling, academic advising, student housing program, student health services, development and implementation of co-curricular programs, recreational activities, coordination of freshman orientation, and dormitory study hall tutoring services.



Hilda Ngiralmu
Director



Maurine Alexander
Counselor



Winfred Recheungel
Counselor



Glendalynn Ngirmeriil
Counselor



Ephraim Ngirachitei
Dormitory Manager



Hulda Lukas
Dormitory Manager



Norman James Sato
Recreation Assistant



Hamilton Maech
Recreation Assistant



Alice Faletam
General Office Clerk



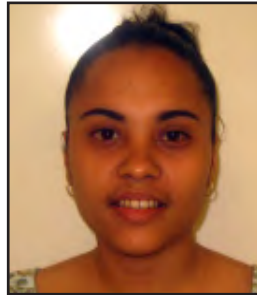
Teongel Ngirkelau
Secretary

CONTINUING EDUCATION DIVISION (CE)

The Continuing Education Division serves as an outreach arm of the college responsible for sponsoring activities that includes non-credit and short-term training programs designed to meet pre-service and in-service needs of the community. It also provides programs and services that empowers the community to meet its growing and changing educational and training needs.



William Wally
Dean



Annalisa Ngiraklei
Secretary



Leona Blaluk
General Office Clerk



EDUCATIONAL TALENT SEARCH

The Educational Talent Search program is a federally-funded program hosted by Palau Community College. The program seeks to meet the learning needs of eligible students in 6th - 12th grades in order to help them succeed in elementary and high schools so that they may continue on to postsecondary institutions.



Laura Mangham
Project Director



Jolene Joseph
*Academic Advisor
& Counselor*



Angelio Anthonio
*Academic Advisor
& Counselor*



Dilmai Saiske
Academic Advisor & Counselor



Akilina Maeach
Administrative Assistant



Talent Search Activities at Airai Elementary School

ADULT HIGH SCHOOL

The PCC Adult High School provides services to all Palauans who have not earned a high school diploma or its equivalent. It also helps its graduates to enroll in postsecondary education or to gain employment.



Laura Mangham
Director
Learning Resources



Hedrick Kual
Counselor



Alex Ngiraingas
Health Instructor



Masaharu Tmodrang
Consumer Economics
Instructor



Karen Mobel
Computer Literacy Instructor



Robert Ramarui
Algebra & Geometry
Instructor



Isabella Sumang
General Science & Biology
Instructor



NON-INSTRUMENTAL NAVIGATION

This is the second year of the Non-Instrumental Navigation class. The program is a joint effort between The Micronesia Voyaging Society and Palau Community College. Its goal is to revive the art of navigation as practiced by the people of the Caroline Islands before the aid of modern tools such as a compass and Global Positioning System units.



Sesario Sewralur
Master Canoe Navigator



Casiano Relugulmar
Navigation Crew



Elword Mangresh
Navigation Crew



Miano Sowaranpiy
Navigation Crew



LIBRARY RESOURCES DIVISION

The Library provides information, resources and services necessary to support academic programs and research for students, faculty, staff, and the college administration. It serves as a community resource and is open to the public.



Debra Neas
Interim Librarian



Miriam Kual
Library Technician



Pioria Asito
Library Technician



Grace Merong
Library Technician



Tanya Ngirkuteling
Library Assistant



Grace Salvador
Library Assistant



Amanda Ebas
Library Aide



Joleen Ulengchong
Library Aide



Kendra Dilbilang M. Ise
Library Aide

COOPERATIVE RESEARCH AND EXTENSION (CRE)

The Cooperative Research and Extension (CRE) Department implements the Agriculture Experiment Station (AES), Cooperative Extension Service (CES), and Residential Instruction (RI) of the College of Micronesia Land Grant Programs in Palau. All CRE programs are done in a multi-disciplinary approach through the three main divisions: Agriculture, Natural Resources and Environmental Education, and Family and Consumer Education.



Thomas Taro
Vice President



Dr. Aurora Del Rosario
*Researcher
Horticulturist*



Dr. Lydia Marero
*Researcher
Food Technologist*



Miguel De Los Santos
*Researcher
Aquaculturist*



Toshihiro Kugimiya
*Plant Breeding Specialist
JICA Volunteer*



Dannies Uehara
*Research Assistant
Extension Agent*



Lyndon Masami
*Research Assistant
Extension Agent*



Felix Sengebau
*Research Assistant
Extension Agent*



COOPERATIVE RESEARCH AND EXTENSION



Itwong Ngiraikelau
Clerk Typist
Research Assistant



Irving Dwight
Extension Agent



Josepha Tutii
Extension Agent



Leilanie Recheluul
Extension Agent



Diliaur Franz
Field Assistant



Leory Fritz
Field Assistant



Franson Oiterong
Field Assistant



Ruskey Remoket
Field Assistant



Maria Teruzi
Field Assistant



Rehabeam Madlutk
Maintenance Worker



Jalavenda Osima
Secretary



Kazue Melpy
Clerk Typist



ADMINISTRATION

The Administration Department provides support services to enable the Education & Training Department to provide quality education and training to the students. It is responsible for the administration of the following functional areas of the College: Finance Division, Human Resources Division, and Physical Plant Division.

OFFICE OF THE PRESIDENT



Patrick U. Tellei, *EdD*
President



Todd Ngiramengior
*Executive Assistant
to the President*



Ligaya Sara
*Institutional Research
Analyst*



Norma Etibek
Office Assistant



Maloreen A. Renguul
Administrative Assistant



Chester Lelis
Structural Engineer/Auto CAD Designer



HUMAN RESOURCE DIVISION

The Human Resources Division is responsible for the administration and management of the college personnel system, employee recruitment & termination, promotion, and staff development programs.



Jay Olegeriil
*Vice President
Administration and Finance*



Karen Mobel
Personnel Manager



Harline Haruo
General Office Clerk

DEVELOPMENT OFFICE

The Development Office is responsible to the Office of the President in the areas of institutional development, research and planning, and public relations.



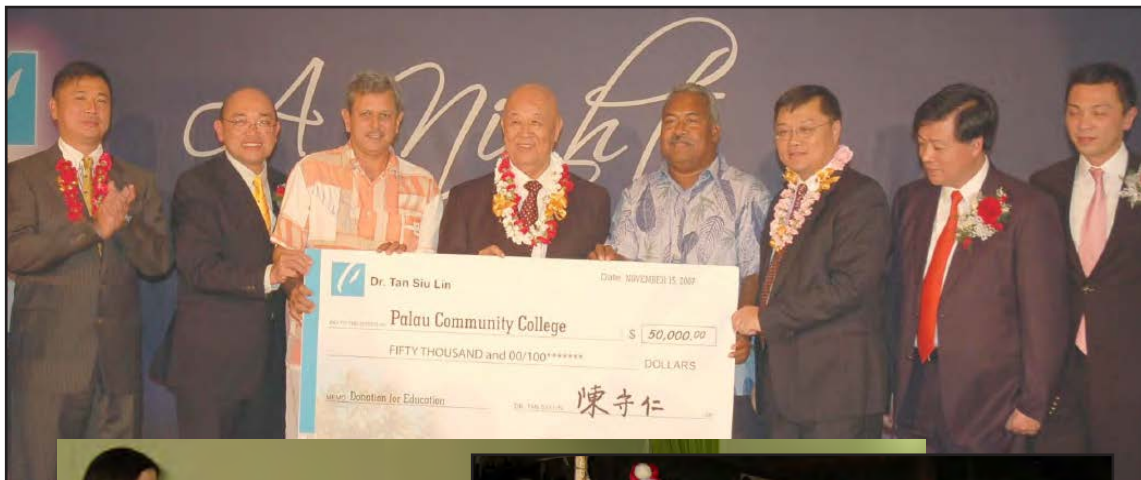
Alvina O. Marcil
Interim Director



Armstrong Debelbot
*Public Relations
Manager*



Dilubch Samil
Administrative Assistant



PHYSICAL PLANT DIVISION

The Physical Plant Division is responsible for maintenance and upkeep of the campus facilities including construction projects and landscaping. It also oversees the logistics office and the campus security.



Clement Kazuma
*Director
Physical Plant*



Rogelio Vergara
*Maintenance & Operation
Supervisor*



Willes Tmecherur
*Maintenance & Operation
Supervisor*



Ann Sabra Ngirarorou
Secretary



Keorung Dolmers
Maintenance Technician



Gaylord Rdechur
Maintenance Technician



Rodney Kazuma
Maintenance Technician



Rosendo Skang
Landscaper



Murais Sebangiol
*HE Operator
Maintenance Worker*



Grace Yalap
*Maintenance Helper
Custodian*



Bluu Ongiil
*Maintenance Helper
Custodian*



Ignacio Akiwo
Maintenance Helper



Mason Ngiramolau
Maintenance Helper



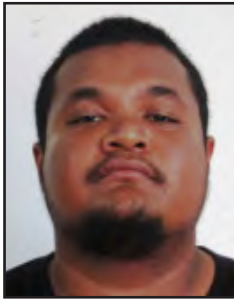
Leonard Ngiramengior
Maintenance Helper



Dawckins Dingelius
Maintenance Helper



Lowel Abraham
Maintenance Helper



Isimang Smus
Maintenance Helper



Arbedul Koshiba
Maintenance Helper



Abel Maech
Maintenance Helper



Yoshi Aki Okabe
Maintenance Helper



Antonio Frederick
Maintenance Helper



Kurt Ngiraked
*Traditional Canoe Builder
Sailing Mentor*

CAMPUS SECURITY



Petrus Itelmong
*Security Service
Supervisor*



Elia Rdiall
Security Service Officer



Umang Olbed Kesolei
Security Service Officer



Herman Rdechor
Security Service Officer



Johnston Kloulubak
Security Service Officer



FOOD SERVICES (Cafeteria)



Ezra Takeo
Food Service Supervisor



Sebastian Ngiratrang
Food Service Coordinator



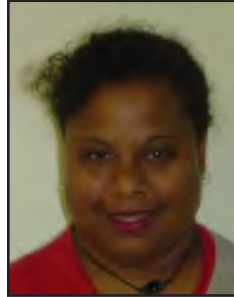
Juan Camacho
Lead Cook



Sheree Sengebau
Supply Clerk



Richard Saburo
Cook



Sharlene Skebong
Cook



Jose Meltel
Cook



FINANCE DIVISION



Jay Olegeriil
*Vice President
Administration and Finance*

The Finance Division is responsible for the general accounting functions of the college such as budgeting, payroll, accounts payable, procurement and supply, student accounts, data processing, and computer systems. It also oversees the college's auxiliary services such as the bookstore and cafeteria.



Lorenza Joseph
Supervisor/Accountant



Arlene Ignacio
Student Account Supervisor



Virginia Ikeya
Accounting Technician



Merelyn Y. Omelau
Accounting Technician



Jackline Immanuel
Accounting Technician



COMPUTER & DATA PROCESSING

BOOKSTORE



Bruce Rimirch
Director



Grace Alexander
System Analyst



Gibson Towai
Supervisor



Husayn Beketaut
Clerk

STUDENT SUPPORT SERVICES (SSS)

Student Support Services Program is a federally funded TRIO program designed to increase the retention and graduation rates of college students; facilitate their transfer from two-year to four-year institutions and foster an institutional climate supportive of student success.



Vernice Rechebei
Project Director



Pauline Jerry
Secretary



Adora Nobuo
Counselor



Midori Mersai
English Instructor



Maria Joseph
Mathematics Instructor

UPWARD BOUND PROGRAM (UB)

The Upward Bound program is a federally-funded TRIO program that provides academic instruction and support services to high school students in order to succeed in their pre-college performance and ultimately in their higher education pursuits.



Kuye Belelai
Project Director



Hellen Imanuel
Assistant Project Director



Debra Ngiraingas
Counselor



Akiko B. Udui
*Administrative Assistant
Student Tracking
Coordinator*



Frederick Abraham
*Administrative
Assistant*



UPWARD BOUND MATH & SCIENCE PROGRAM (UBMS)

The Upward Bound Math & Science Program is a federally-funded TRIO program for selected college bound high school students (9th - 12th graders). It seeks to help the students to recognize their math and science skills, develops their potential to excel in math and science, and encourages them to pursue postsecondary degrees in such fields.



Tchuzie Tadao
Project Director



Larry Wakakoro
Assistant Project Director



Geraldine Rengiil
*Mathematics & Science
Coordinator*



Lakolani Olengellel
*Academic Advisor
& Counselor*



Keith Ignacio
Administrative Assistant

OPERATIONS AND MAINTENANCE IMPROVEMENT PROGRAM (OMIP)



Donald Hanser
Coordinator

The OMIP Training Program was established at the College with the expressed goal of establishing a permanent short-term training program for workers in the area of infrastructure operation and maintenance. The program concentrates on assessment and training of government and semi-government employees working in infrastructure and utility-related fields.

BELAU TOURISM ASSOCIATION (BTA)



Mary Frances R. Vogt
President

BTA is a collective voice of members in the tourism industry that advocates the development and promotion of the tourism industry in the Republic of Palau. BTA also grants resources where members of the industry can work together to promote better business practices among themselves through self-monitoring activities and support a healthier tourism industry through sustainable use of the island resources.



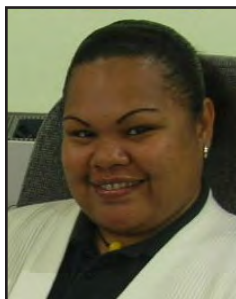
Blaire Phillips
Executive Director

WORKFORCE INVESTMENT ACT (WIA)

WIA provides services to customers who want access to available job training programs. It also offers non-degree based training, occupational and apprentice training to develop the workforce of the Republic of Palau.



Josephine Ulengchong
Director



Noella Karmelong
*Job Development
Officer*



Jemima Itpik
*Workforce Development
Officer*



Nglodch Luii
Administrative Specialist



John Kebou
Fiscal Officer



Alex Spis
Monitoring Officer



Kei-ili Mikel
*Assistant Monitoring
Officer*



Sharon Bultedaob
Administrative Assistant

PALAU CHAMBER OF COMMERCE



Mason N. Whipps
President

The Palau Chamber of Commerce promotes, develops, and supports the establishment of commercial business development; assists in the development and improvement of public services and infrastructures. It also provides other services such as but are not limited to, informing members of proposed legislations, proposed amendments to laws, regulations and policies in relation to business ownership as well as business trainings and workshops.

COMMUNITY ADVOCACY PROGRAM (CAP)

The Community Advocacy Section (CAS) office offers services aimed at helping individuals to make informed decisions regarding their health through course offering and training in areas such as crisis counseling, human growth development, and life skill enhancement.



Deidre Yamanguchi
Social Marketer



Jane Olsudong
Health Educator



Gafaar Ucherbelau
Social Marketer

PACIFIC ISLANDS UNIVERSITY (PIU)

With its main campus in Guam, Pacific Islands University (PIU) is a fully accredited Christian college offering certificates, diplomas and degrees in biblical studies and ministry training. Working in collaboration with the college, PIU's Palau extension offers classes to on-campus and off-campus students.



Marcellus Ngiraingas
Board Representative



Esther Subris
Office Manager



Student Support Services - Study Marathon



Student Support Services - Peer Tutoring

DAY CARE CENTER

Through a partnership agreement with the Ministry of Health, Palau Community Action Agency, and Palau Community College, the Day Care Center was primarily established to offer day care services to PCC students with children.



Rechediool Jemmy Blelai
Director



Haidy Beltau
Supervisor



Dixie Techur
Teacher



Sylvia Sachalboi
Teacher



BOARD OF TRUSTEES

Bilung Gloria G. Sali	Chairperson
Mr. Masa-Aki N. Emesiochl	Vice Chairman
Mrs. Valeria Toribiong	Secretary/Treasurer
Dr. Emais Roberts	Member
Mr. Buk Emil Ramarui	Member
Ms. Carmel Hanser	Student Trustee

EXECUTIVE COMMITTEE MEMBERS

Patrick U. Tellei, EdD	President
Mr. Jay Olegeriil	Vice President, Administration & Finance
Mr. Thomas Taro	Vice President, Cooperative Research and Extension
Mr. Todd Ngiramengior	Executive Assistant to the President
Ms. Alvina Timarong	Dean of Academic Affairs
Ms. Marensia Edward	Dean of Students
Mr. William O. Wally	Dean of Continuing Education
Ms. Kuye Belelai	Project Director of Upward Bound Program
Ms. Vernice Rechebei	Project Director of Student Support Services
Mr. Tchuzie Tadao	Project Director of Upward Bound Math & Science Program
Mr. Clement Kazuma	Director of Physical Plant
Ms. Laura Mangham	Director of Learning Resources/Project Director of Talent Search
Ms. Hilda Ngiralmu	Director of Student Life
Mr. Bruce Rimirch	Director of Computer & Data Processing
Ms. Alvina O. Marcil	Interim Director of Development
Ms. Dahlia Katosang	Accreditation Liason Officer
Ms. Ligaya Sara	Institutional Research Analyst
Mr. Tutii Elbuchel I. Chilton	President, Faculty Senate Association
Mr. Ephraim Ngirachitei	President, Classified Staff Organization
Ms. Sasha Lirow	President, Associated Students of PCC
Mr. Jewish O. Ngiraikelau	President-Elect, Associated Students of PCC

Faculty Senate Association (FSA)

Mr. Tutii Elbuchel I. Chilton	President
Mr. William Mitchell	Vice President
Ms. Danka Ledgerwood	Secretary
Ms. Megan Beard	Treasurer

Classified Staff Organization (CSO)

Mr. Ephraim Ngirachitei	President
Mr. Ezra Takeo	Vice President
Ms. Pauline Jerry	Secretary
Ms. Arlene Ignacio	Treasurer

Alumni Job Placement

Mr. Vincent Ito	Coordinator of Extension Program
-----------------	----------------------------------

FACULTY , PROFESSIONAL STAFF, SUPPORT STAFF

Adachi, Lesley B.
Registrar
BS 1980, Fort Wright College
MA 2008, San Diego State

Alexander, Grace
System Analyst
BS 1985, Northern State College

Alexander, Maurine
Counselor
BS 1988, Northern State College
MA 2003, San Diego State University

Asang, Dr. Isebong M.
English Professor
BBA 1989, University of Guam
MA 1995, University of Oklahoma
PhD 2004, University of Hawaii at Manoa

Beard, Megan K.
Associate Professor, Library & Information Services
BS 2004, East Central University
MS 2007, University of Oklahoma

Buban, Margeline V.
Assistant Professor, Mathematics
BS 1984, Marikina Institute
MA 2004, Marikina Institute

Charles, Howard M.
Associate Professor, Music
BA 1994, Point Loma Nazarene College
MA 2008, San Diego State University

Chilton, Tutii Elbuchel I.
Associate Professor, Social Science
BS 1993 & MS 1994
Rutgers, State University of New Jersey

Daniel, Sherman
Associate Dean, School of Technical Education
BVE 2005, San Diego State University
MA 2008, San Diego State University

Debelbot, Armstrong
Public Relations Manager
BS 1996, U.S. International University

De Jong, Elizabeth
Drafting Instructor
BA Architecture, University of Auckland

De Los Santos, Miguel A.
Researcher/Aquaculturist
BS 1992, University of Philippines
MS 2001, University of Philippines

Del Rosario, Aurora
Researcher/Horticulturist
BS 1966, College of Agriculture Philippines
MS 1980, University of Philippines
PhD 1990, University of Philippines

Enano, Nobby H.
Automotive/Mechanics Technology Instructor
BS 1992, University of Southeastern, Philippines

Edward, Marensia
Dean of Students
BA 1974, University of Guam
MEd 1983, University of Hawaii

Gachalian, Alex M.
Associate Professor, Agriculture
BA 1978, Sabani Estate Agricultural College
MA 1987, Tarlac College of Agriculture

Garcia, Ramon
Assistant Professor, Air Conditioning & Refrigeration
BA 1974, Central Luzon Polytechnic College

Garcia, Soledad
Assistant Professor, OHEC
BS 1974, Central Luzon Polytechnic College

George, Nena
Instructional Assistant II
Diploma 1988, Kosrae High School
AAS 2010, Palau Community College

Ito, Vincent
Extension Program Coordinator
BS 1981, Arizona State University

Katosang, Dahlia M.
Director, Admissions & Financial Aid
BA 1976 & MA 1977, U.S. International University

Kazuma, Clement
Director, Physical Plant
AS 1988, Micronesian Occupational College

Kohama, Rosemary A.
Instructor Assistant
AS 2006, Palau Community College

Kual, Hedrick W.
Counselor
BA 2005, Pacific Islands Bible College

Kunihiro, Damiana
Assistant Professor, Nursing
BSN 1982, Fort Hays State University

Ledgerwood, Danka
Associate Professor
Office Administration
BA 1986 & MA 1993, University of Comenius

Marcil, Alvina O.
Interim Director, Development Office
BS 1982, Nebraska Wesleyan University
MA 2008, San Diego State University

FACULTY, PROFESSIONAL STAFF, SUPPORT STAFF

Marero, Lydia M.
Researcher/Food Technologist
BS 1969, Arareta University
MS 1978, University of
Philippines
PhD 1995, Seoul National
University

Maui, Victoria
Associate Professor, Tourism &
Hospitality
BS 1974, Philadelphia College of
Bible
MEd 1979, Northern Arizona
University

Meyar, Renette
Instructor Assistant
AA 2004, Palau Community
College
BA 2008, San Diego State
University

Mitchell, William T.
Assistant Professor, English
BS 1979, Florida A&M University
MA 1991, Webster University

Mobel, Karen R.
Personnel Manager
BVE 2005, San Diego State
University

Moses, Epimachus
Associate Professor, Mathematics
BS 1992, Oregon State University
MS 2002, Western Illinois
University

Neas, Debra O.
Interim Librarian
BS 1996, John Brown University
MA 2008, San Diego State
University

Ngiralmu, Hilda N.
Director of Student Life
BA 1991, University of Hawaii at
Hilo

Ngiramengior, Todd N.
Executive Assistant to the
President
BS 1983, Eastern Illinois
University

Ngirmang, Tarmau T.
Nursing Instructor
AA 1983, El Camino College

Ngirmeriil, Gamberlyn S.
Associate Professor, Science
BA 1992, Park College
MA 2008, San Diego State
University

Ngirmeriil, Glendalynn N.
Counselor
BA 2005, University of Hawaii at
Manoa

Olegeriil, Jay G.
Vice President, Administration &
Finance
BA 1989, Hawaii Pacific
University
MA 2003, San Diego State
University

Olikong, Deikola
Assistant Professor, Social Science
& Education
BA 1989, Hawaii Pacific College

Pfalzer, Joseph
Assistant Professor, Mathematics
BA 1989, University of Washington

Ramarui, Robert
Assistant Professor, Business
BBA 1997, University of Guam
MBA 2000, University of Guam

Recheungel, Winfred
Counselor
BA 1981, Chaminade University

Rekemesik, Lester
Carpentry Instructor
CA 1988, Chuo Ko-Gakko

Rimirsch, Bruce S.
Director, Computer & Data
Processing
BA 1986, Asbury College

Santos, Rogelio
Welding/Auto-Body Instructor
BS 1980, Pangasinan State
University
MS 1987, Marikina Institute of
Science & Technology

Skilang, Keiden
Assistant Professor, Business
BBA 2003, University of Guam

Taroy, Jerry O.
Electrical Technology Instructor
BS 1992, Marikina Polytechnic
College

Taro, Thomas
Vice President, Cooperative
Research and Extension
BA 1982, US International
University
MA 2003, San Diego State
University

Tellei, Frutoso
Electrical Technology Instructor
AS 2004, Palau Community
College

Tellei, Patrick U.
President
AS 1980, Micronesian
Occupational College
BEd. 1987, University of Hawaii at
Manoa
MEd. 1989, University of Hawaii at
Manoa
EdD 2005, University of San Diego

Temaungil, Marianne
Associate Professor, English
BS 1975, State University of New
York
MA 2003, San Diego State
University

Timarong, Alvina R.
Dean, Academic Affairs
BA 1984, University of Hawaii
MA 2003, San Diego State
University

Wally, William O.
Dean, Continuing Education
BA 1980, California State
University at Chico
MA 2005, San Diego State
University

Yabes, Joel G.
Associate Professor, General
Electronics Technology
BA 1983 and MA 1990, Marikina
Institute of Science and
Technology

FACULTY , PROFESSIONAL STAFF, SUPPORT STAFF

Yaoch, Johvanna
Assistant Professor, Computer
BS 1980, Eastern Oregon
University

Yuzi, Vernice
Associate Professor, Science
BS 1990, California State
University
MA 2008, San Diego State
University

FEDERAL PROGRAMS STAFF

Anthonio, Angelio
Academic Counselor/Advisor
BA 2001, University of Guam

Belelai, Kuye
Project Director, Upward Bound
BA 1978, University of Colorado
MS 1979, California State
University

Hanser, Don
OMIP Coordinator
BA 1972, University of Wisconsin

Imanuel, Hellen
Assistant Project Director
Upward Bound Program
BS 1981, St. Paul Bible College

Joseph, Jolene
Academic Counselor/Advisor
BA 2002, University of Guam

Joseph, Maria
Mathematics Instructor
BA 1999, San Jose State
University

Mangham, Laura S.
Project Director, Talent Search
Director, Learning Resources
BA 1980, Trinity College
MA 2008, San Diego State
University

Mersai, Midori
English Instructor
BA 1997, University of Hawaii
MA 2008, San Diego State
University

Ngiraingas, Debra
Counselor
BS 1992, Southern Adventist
College

Nobuo, Adora
Counselor
BS 1997, Walla Walla College

Olngellel, Lakolani
Academic Counselor/Advisor
BA 2004, University of Hawaii at
Hilo

Rechebei, Vernice
Project Director, Student Support
Services
BA 1990, California State
University
MA 2003, San Diego State
University

Rengiil, Geraldine
Mathematics & Science
Coordinator
BS 1991, Park College
MA 2008, San Diego State
University

Saiske, Dilmai
Academic Counselor/Advisor
BA 1983, University of Hawaii at
Hilo

Tadao, Tchuzie
Project Director, Upward Bound
Math & Science Program
BA 1995, University of Hawaii
MA 2003, San Diego State
University

Wakakoro, Larry
Assistant Project Director, UBMS
BS 1990, Southwestern Adventist
University
MA 2008, San Diego State
University

OTHER SUPPORTING STAFF

Abraham, Frederick
Administrative Assistant
Diploma 1981, Palau High School
One Year, Palau Community
College
Three Years, University of Guam

Asito, Pioria
Library Technician
AS 1998 & 2001, Palau Community
College

Beketaut, Husayn
Bookstore Clerk
AS 2006, Palau Community
College

Brel, Elenita
Financial Aid Coordinator
AA 1978, Lassen Community
College

Camacho, Juan
Lead Cook
Diploma 1972, Koror Elementary
School

Dolmers, Keorung
Maintenance Technician
Diploma 1972, Palau High School

Etibek, Norma A.
Clerk Typist
AAS 2009, Palau Community
College

Haruo, Harline
General Office Clerk
AA 2000, Lassen Community
College

Idechong, Teory
Secretary
AS 1998, Palau Community
College

Ignacio, Arlene
Student Account Supervisor
BBA 1997, University of Guam

Ignacio, Keith
Administrative Assistant
AS 1999, Palau Community
College

FACULTY , PROFESSIONAL STAFF, SUPPORT STAFF

Ikeya, Virginia
Accounting Technician
CA 1997 & 1999, Palau
Community College

Immanuel, Jackline
Accounting Technician
AS 1998, Palau Community
College

Itelmong, Petrus
Security Guard Supervisor
AA1981, El Paso Community
College

Jerry, Pauline
Secretary
AS 2001, Palau Community
College

Kazuma, Rodney
Maintenance Technician
AS 1997, Palau Community
College

Kloulechad, Jade
Secretary
Diploma 1999, Palau High School

Kual, Miriam N.
Library Technician
CA 1977, Micronesian
Occupational Center

Kyota, Verna
Secretary
AAS 2009, Palau Community
College

Lukas, Hulda
Dormitory Manager
CA 1985, Micronesian
Occupational College

Maeach, Abel
Maintenance Helper
CA 2004, Palau Community
College

Maeach, Akilina
Administrative Assistant
AS 2002 & 2004, Palau
Community College

Masami, Lyndon
Extension Agent/Research
Assistant
Diploma 1991, Palau High School

Merong, Grace
Library Technician
CA 2000, Palau Community
College

Ngirachitei, Ephraim
Dormitory Manager
BA 1982, Hawaii Pacific College

Ngiraklei, Annalisa
Secretary
AAS 2009, Palau Community
College

Ngirarorou, Ann Sabra
Secretary
CA 1982, Micronesian
Occupational College

Ngiratrang, Sebastian
Food Service Coordinator
CA 1982, Micronesian
Occupational College

Ngirkelau, Teongel
Secretary
Diploma 1991, Palau Mission
Academy
AS 2008, Palau Community
College

Ngirkuteling, Tanya
Library Assistant
Diploma 2006, PCC Adult High
School

Olkeriil, Marlyne
Financial Aid Technician
AA 1982, Lassen Community
College

Omelau, Merelyn
Accounting Technician
Diploma 1974, Palau High School

Osima, Jalavenda P.
Secretary
AS 1999, Palau Community
College

Rdechor, Gaylord
Maintenance Technician
Diploma 1980, Mindszenty High
School

Rdiall, Elia
Security Service Officer
Diploma 1981, Palau High School

Reksid, Maria Lourdes
Administrative Assistant
BS 1985, Knoxville College

Renguul, Maureen
Financial Aid Technician
CA 2002, Palau Community
College

Saburo, Richard
Cook
Diploma 1978, Palau High School

Salvador, Grace
Library Assistant
AAS 2005, Palau Community
College

Samil, Dilubch
Administrative Assistant
Diploma 1983, Marianas High
School

Sengebau, Sheree
Supply Clerk
CA 2005, Palau Community College

Silil, Mekreos
Admissions Counselor
BA 1991, University of Guam

Skebong, Sharlenne T.
Cook
Diploma 1999, Belau Modekngai
School

Takeo, Ezra
Food Service Supervisor
Diploma 1977, Marianas High
School

Tkel, Leona
Secretary
Diploma 1979, Mindszenty High
School

FACULTY , PROFESSIONAL STAFF, SUPPORT STAFF

Tmecherur, Wiles
Maintenance & Operation
Supervisor
CA 1988, Micronesian
Occupational College

Towai, Gibson
Supply/Bookstore Supervisor
AS 1997, Palau Community
College

Tutii, Josepha
Extension Agent
AS 1980, Micronesian
Occupational College

Udui, Akiko S.
Administrative Assistant &
Student Tracking Coordinator
AAS 2009, Palau Community
College

Uehara, Dannies
Research Assistant/Extension Agent
Diploma 1991, Emmaus High
School

Vergara, Rogelio
Maintenance & Operation
Supervisor
CA 1969, Pampanga, Philippines

Yalap, Grace
Maintenance Helper/Custodian
Diploma 1981, Palau High School

PART-TIME FACULTY & PROFESSIONAL STAFF

Allan, Simon
Mathematics Instructor
BS 2007, University of York

Andreas, Clara Maile
English Instructor
BS 1988, University of Hawaii at
Hilo
MA 2005, San Diego State
University

Andrew, Evangeline
English Instructor
BA 1994, Brigham Young
University
MA 2008, San Diego State
University

Basilius, Merlyn
Health/Physical Education Instructor
BS 1998, University of Guam

Basilius, Vance
Business Instructor
BA 2000, Boise State University

Blelai, Jemmy
Education Instructor
BA 1985, University of Guam

Carlson, Eric L.
Tourism & Hospitality Instructor
BA 1993, Brigham Young
University

Cataluna, Gilbert
Computer Science Instructor
BA 2000, The College of Maasin

Chen, Tzu-Ching
Chinese (Mandarin) Language
Instructor
BA 1996, National Cheng Kung
University

Elechuus, Bernice
Education/Information Technology
Instructor
BS 1989, Griffin College
MS 2002, Western Illinois
University

Fedison, Michael
Science Instructor
BS 1999, George Washington
University

Garcia, Suzette G.
Drafting & Mathematics Instructor
BS 2008, University of Santo Tomas

Ikerdeu, Edolem
English Instructor
BA 1997, California State University
MA 1999, California State
University

Kawamura, Reiko
Japanese Language Instructor
BS 1998, Azubu University

Kiep, Galindez R.
Instructional Assistant I
Diploma 1999, Marianas High
School
AAS 2010, Palau Community
College

Kugimiya, Toshihiro
Plant Breeding Specialist
JICA Volunteer

Lelis, Chester P.
Structural Engineer- Auto CAD
Designer
BS 2006, University of Mindanao

Mathew, Janice
Business Accounting Instructor
BS 1992, University of Nebraska

Mersai, Rosemary
BA 1970, Kwansei Gakuin
University
Kobe, Japan

Morei, Elicita
English Instructor
BA 1979, California State Univer-
sity

Moses, Hayes W.
Criminal Justice Instructor
BS 1991, University of Dayton
BA 1994, Wright State University

Nauluvula, Maleli U.
Computer Science Instructor
BA 2004, University of South
Pacific
MA 2009, Kobe University

Ngemaes, Clinton
Information Technology Instructor
BA 1997, University of Guam
MA 2000, Monash University

Ngiraingas, Alex
Health Instructor
BSW 2004, University of Guam

Ngirmang, Sunny
Social Science Instructor
BA 2007, University of Hawaii at
Hilo

FACULTY, PROFESSIONAL STAFF, SUPPORT STAFF

Ngirngebedangel, Joshua
Assistant Professor, Small Engine &
Outboard Motor
CA 1977, Micronesian
Occupational Center

Rechelluul, Leilanie
Extension Agent
BA 1997, University of Guam

Rekemesik, Natalia
Education Instructor
BA 1975, University of Hawaii, Hilo
MA 1977, University of Hawaii, Hilo

Remeliik, Dolmii T.
English Instructor
BA 2009, Arizona State University

Sara, Ligaya
Institutional Research Analyst
BS 2004, University of Southeastern
Philippines

Sasao, Appolonia R.
Education Instructor
BA 1985, University of Guam

Sengebau, Fleming U.
Science Instructor
BA 1993, University of Hawaii, Hilo
MS 2006, University of Guam

Shah, Seema
English Instructor
BS 2002, Indiana University
Kelley School of Business
J.D. 2006, Indiana University School
of Law

Sumang, Isabella
General Science & Biology
Instructor
BA 1967, Mount View College

Teriong, Leoben
Tourism & Hospitality Instructor
BBA 1987, Armstrong University
MBA 1989, Armstrong University

Tmodrang, Masaharu
Social Science Instructor
BA 1968, University of Guam
MA 1980, University of Hawaii at
Manoa

Uehara, Eugene
Assistant Professor
Automotive/Mechanics Technology
Instructor
CA 1976, Maui Community College

Victor, Steven
Science Instructor
BA 1998 & MS 2002, University of
Guam

Yamada, Sween
Mathematics Instructor
BA 1985, University of Colorado

PART-TIME SUPPORTING STAFF

Akiwo, Ignacio
Maintenance Helper
Diploma 1973, Palau High School

Blaluk, Leona
General Office Clerk
Diploma 2007, PCC Adult High
School

Dingelius, Dawckins
Maintenance Helper
Diploma 2005, PCC Adult High
School

Dwight, Irving
Extension Agent
AS 2004, Palau Community College

Ebas, Amanda
Library Aide
Diploma 2004, Palau High School

Faletam, Alice L.
General Office Clerk
CA 2005, Palau Community College

Franz, Diliaur
Field Assistant
Diploma 1979, Belau Modekngai
School

Fritz, Leory
Field Assistant
Diploma 1980, Ngaremlengui
Elementary School

Higa, Charlette Yuko K.
Senior Clerk Typist
AAS 2009, Palau Community
College

Ise, Kendra D. Mariur
Library Aide
Diploma 2005, Palau High School

Joseph, Lorenza
Accountant/Supervisor
CA 2001, Palau Community College

Kesolei, Umang O.
Security Service Officer
Diploma 1985, Palau High School

Kloulubak, Johnston
Security Service Officer
Diploma 1978, JFK Guam

Koshiba, Arbedul
Maintenance Helper
CA 2006, Palau Community College

Madlutk, Rehabeam
Maintenance Worker
GED 2001

Maech, Hamilton
Recreation Assistant
AS 2005, Palau Community
College

Mangresh, Elword
Navigator Crew

Melphy, Kazue
Clerk Typist
Diploma 1998, Palau High School

Meltel, Jose
Cook
AAS 2009, Palau Community
College

Ngiraikelau, Itwong
Clerk Typist/Research Assistant
CA 1981, Micronesian
Occupational College

Ngiraked, Kurt
Diploma 1979, Palau High School
Traditional Canoe Builder
Sailing Mentor

FACULTY , PROFESSIONAL STAFF, SUPPORT STAFF

Ngiramengior, Leonard
Maintenance Helper/HE Operator
Diploma 1976, Ngchesar
Elementary School

Ngiramolau, Mason
Maintenance Helper
CA 2004, Palau Community
College

Oiterong, Franson
Field Assistant
Diploma 1999, Koror Elementary
School

Okabe, Yoshi Aki
Maintenance Helper
AAS 2008, Palau Community
College

Ongiil, Bluu
Maintenance Helper/Custodian
Diploma 1970, Peliliu Elementary
School

Rdechor, Herman
Security Service Officer
CA 1988, Micronesian
Occupational College

Relugulmar, Casiano
Watch Captain
Navigation Crew

Remoket, Rusky
Field Assistant

Renguul, Maloreen
Office Assistant
AS 2009, Palau Community College

Sato, James Norman
Recreation Assistant
GED 1992

Sebangiol, Murais
Heavy Equipment
Operator/Maintenance Worker
Diploma 1988, Melekeok
Elementary School

Sengebau, Felix
Extension Agent
Diploma 1992, Mindszenty High
School

Sewralur, Sesario
Master Navigator
Captain

Skang, Rosendo
Landscape
CA 1979, Micronesian
Occupational College

Smus, Isimang
Maintenance Helper
AAS 2009, Palau Community
College

Sowaraenpiy, Miano
Navigation Crew

Teruzi, Maria L.
Field Assistant
Diploma 1979, Meyuns
Elementary School

Ulungchong, Husto
Data Services Technician
Diploma 1984, Palau High School

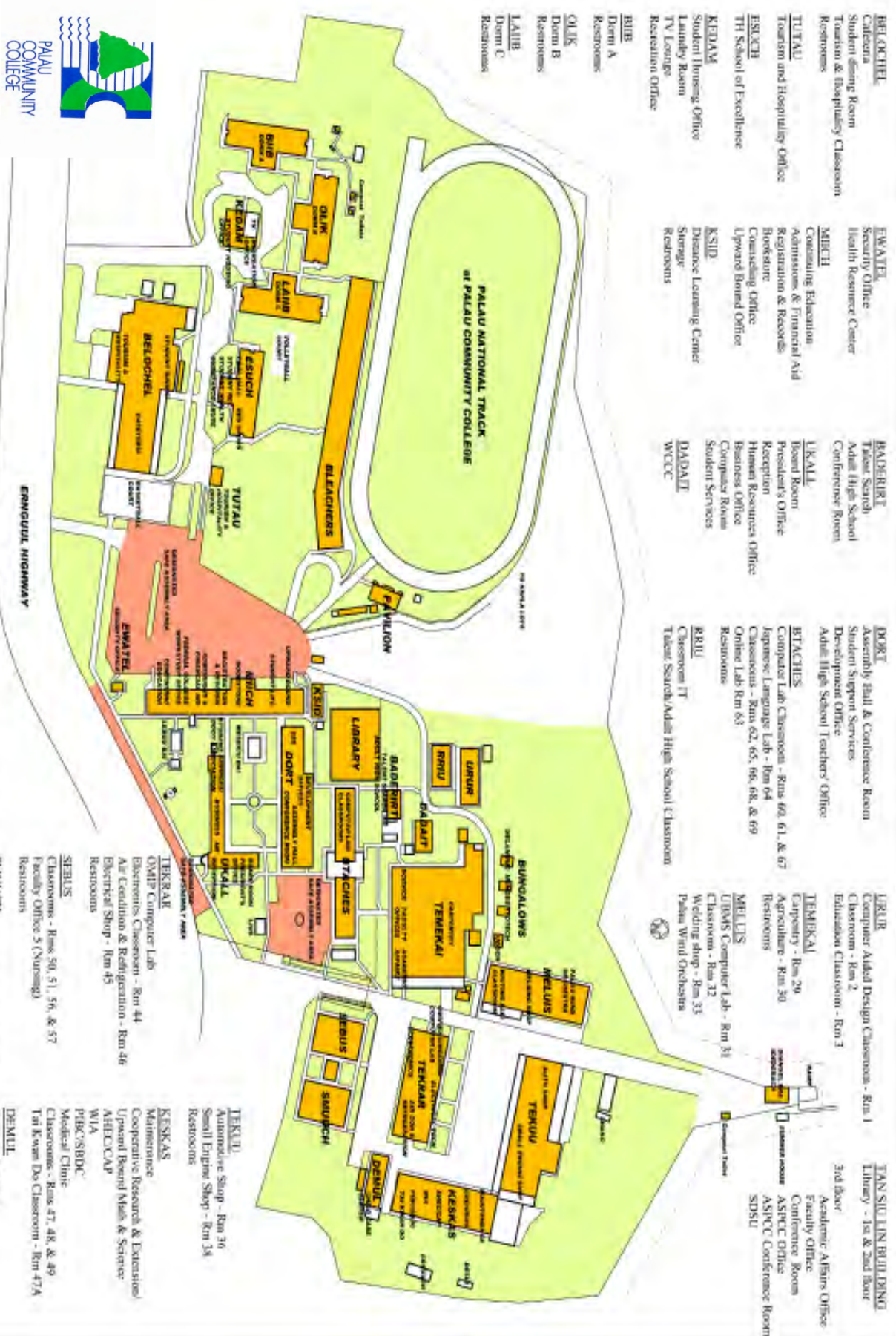
Ulungchong, Joleen
Diploma 1992, Mindszenty High
School

PCC CONTACT INFORMATION

Academic Affairs	488-2471, ext. 246, 259, 488-4864
Administration	488-2470/71, ext. 221, 223
Admissions & Financial Aid	488-2471, ext. 235
Adult High School	488-2471, ext. 267/488-0826
Area Health Education Center (AHEC)	488-2001/2002
Associated Students of Palau Community College (ASPPC)	488-2461
Autoshop	488-3383
Belau Tourism Association (BTA)	488- 4377
Bookstore	488-2471, ext. 236
Business Education Faculty Office	488-2471, ext. 241
Business Office	488-2471, ext. 268
Cafeteria	488-2357
Community Advocacy Program (CAP)	488- 2002
Continuing Education (CE)	488-2471, ext. 243/488-6223
Cooperative Research & Extension (CRE)	488-2746/4983
CRE-Research & Development Station, Ngaremlengui	733-1111
Criminal Justice Program	488-2471, ext. 240
Day Care Center	488-8716
Development Office	488-2471, ext. 251-253
Distance Learning	488-4272/4816
Dormitories	488-3074/1053
Faculty Office II	488-2471, ext. 248
Federal Work Study Office	488-2471, ext. 273
Health Resource Center	488- 8618
Human Resource	488-2471, ext. 226
Internship	488-2471, ext. 238
Institutional Research Office	488-2471, ext. 250
Library	488-2471, ext. 261/488-3540
Maintenance	488-2471, ext. 258
Nursing Program	488-2471, ext. 272
OnLine Lab	488-2471, ext. 256
Operations & Maintenance Improvement Project (OMIP)	488- 2471, ext. 254
Pacific Islands University (PIU)	488-4294
Pacific Regional Tech. In Education Consortium	488-1006
Palau Chamber of Commerce	488- 3400
Part Time Teachers' Office	488-2471, ext. 270
Penn Foster Career School	488-6504
Recreation	488-3885
Registrar	488-2471, ext. 257, 274
SDSU On-line Bachelor and Master Degree Programs	488- 6504
Security Office	488-4178
Student Accounts	488-2471, ext. 262
Student Life & Housing	488-3036
Student Services	488-2471, ext. 229
Student Support Services	488-3073
Student Support Services Lab	488-5654
Talent Search Program	488-2471, ext. 244/488-3926
Tourism & Hospitality	488-6008
Upward Bound Program	488-2962
Upward Bound Math & Science Program	488-3965
Western Curriculum Coordination Center (WCCC)	488-6504
Workforce Investment Act (WIA)	488-2513



Original 1968; Rev 1994, 1999, 2008, 2009, May 2010





2010 Personnel Directory

Palau Community College
P.O. Box 9, Koror, Palau 96940
Telephone: (680) 488-2470/488-2471
Fax: (680) 488-2447

PCC President: *tellei@palau.edu*

www.palau.edu