

FREE!!!



Palau Community College

MESEKIU'S NEWS



Friday, January 05, 2018

Weekly Newsletter

Volume 20, Issue 01

PCC Held EMT Refresher Course



Far right: Mr. Edward Caballero, EMT Refresher Course Instructor, Division of Fire and Rescue Personnel from Bureau of Public Safety

Palau Community College (PCC) hosted a two-week long Emergency Medical Technician refresher courses for the Division of Fire and Rescue officers from the Bureau of Public Safety. Mr. Edward Caballero from Kapi'olani Community College conducted this specialized training through collaborative efforts between PCC, Ministry of Justice, and Ministry of Health.

The Emergency Medical Technician (EMT) provides basic and advanced life support to patients in the pre-hospital emergency setting. Specific EMT functions include: establishment and maintenance of airway; administration of cardiopulmonary resuscitation (CPR); control of hemorrhage; treatment of shock; immobilization of fractures; bandaging of wounds; assisting in childbirth; management of patients with behavioral disorders; and initiation of treatment for poisoned and burned victims. Graduates are qualified to take the National Registry Examination for certification as an EMT- Basic and EMT-Intermediate (I-85) and may apply for work with an ambulance service.

EMT CONTINUED ON PAGE 2

Health Assistant Training Program



Back-row: Antonette Merur, Dr. Ngirachisau Mekoll, Sher Madraisau, Dr. Emalis Roberts, Johana Ngiruchelbad and nursing students during Christmas Luncheon

The Ministry of Health in collaboration with Palau Community College established health program to assist and educate young palauans who are interested in health career pathways. The 2017-2018 Health Assistant Training Program (HATP) began in October of 2017 with twenty-nine (29) palauan students from various States in Palau. The focus of the training program is to provide general content on Body Structure and Functions which include cell in muscle and nervous tissue, Human Growth and Development, and Nutrition and fluids. This year, students will take on practicum in Clinical Rotation which students gain practical applications learned in class. The rotation portion of the class is primarily observation with some hands on experience in Belau National Hospital.

Palau Community College is an accessible public educational institution helping to meet the technical, academic, cultural, social, and economic needs of students and communities by promoting learning opportunities and developing personal excellence.

EMT refresher courses are non-credit short-term certificate programs designed to fast-track students into the job-market and meet workforce industry needs whereby specific degrees such as an associate's or bachelor's degrees are not required. The contact hours earned in these programs are not transferable into a different degree pathway, but are only specific for certification or licensure eligibility in these specific fields. Class meeting times are usually non-traditional and often held during the evenings or weekends to meet the needs of those who work as in the case of Fire and Rescue Officers from the Bureau of Public Safety.



Officers established and maintained airway



Administration of cardiopulmonary resuscitation (CPR)



Immobilizing of fractures and bandaging of wounds

EMT program include classroom instruction, problem-based learning, clinical experience within hospitals, and practical learning experience in ambulances. Students may gain the competencies required for entry-level positions in the field.

The EMT Career Ladder Programs use multimedia approaches based on the premise that active participation and personal responsibility for learning are the most successful methods for adult education. Therefore, theoretical classes include discussion groups with students presenting assigned portions of the content. Skill practice outside of the class and self-evaluation in the clinical setting are expected. Officers are encouraged to follow basic EMT standards or guidelines: 1) Hearing: Ability and strength necessary to respond to emergencies in a variety of settings. Auscultation of breath sounds and blood pressure. Converse with patients and healthcare professionals. Work around loud equipment on roadways, discern radio transmission and pager tones and communicate on telephone/radio; 2) Mobility: Ability and strength necessary to respond to emergencies in a variety of settings. Work in natural and man-made disasters in a variety of terrains and settings with physical demands; 3) Motor Skills (Fine): Ability to handle or feel and reach sufficient to provide safe and efficient emergency care. Tie a knot or bandage, give injections, pick up small objects, and write with a pen or use a keyboard/touch pad; 4) Motor Skills (Gross): Perform multiple motor tasks simultaneously. Ability to lift and move patients from or to various heights, positions. Lift and move patients from various heights or positions onto a gurney or stair chair. Provide a skill such as airway management or CPR while moving a patient down a set of stairs reasonable for this occupation; 5) Tactile: Tactile ability sufficient for physical assessment. Distinguish hot or cool temperature, pulse rate; feel anatomical landmarks. Distinguish textures, degree of firmness, temperature differences; 6) Visual: Ability sufficient to work in dark, dimly lit or bright light environments. Have peripheral, form, depth perception and ability to distinguish shades of color, reading and writing reports, Visualize mechanism of injury in relation to patient's condition, Describe size and shape of wound, Describe patient's skin color; and 7) Driver's License: Have a driver's license to operate an ambulance.

BITS AND PIECES...

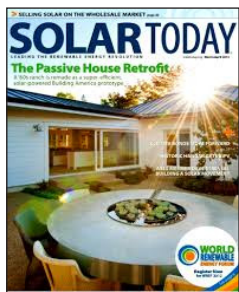
Tan Siu Lin PCC Library

Hours of Operation

Monday to Thursday	7:30AM - 7PM
Friday	7:30AM - 5PM
Saturday	9AM - 6PM
Sunday	CLOSED

For more information, call:
488-3540.

AVAILABLE TO INTERESTED READERS: **SOLAR TODAY MAGAZINE**



Solar Today is a Bi Monthly business magazine that will focus on discussing ideas pertaining management of solar as a business which needs global knowledge and due diligence. SOLAR TODAY showcases new developments in the world of solar technology through news analyses, product features, relevant case studies, exclusive viewpoints from national and global thought leaders, and the latest advances in scientific research.

Academic Calendar: Spring 2018

January 08 (M)
New Student Orientation

January 9-10 (T-W)
Spring 2017 Registration Period

January 15 (M)
First Day of Instruction

News/Stories Wanted

Mesekiw's News welcomes stories/articles/announcements from students, faculty, and staff. Submission deadline is Wednesday at 4:30 p.m. in hard and/or electronic copies to tchuziet@palau.edu or tchuziet@gmail.com.

Articles from MOC/PCC Alumni are also welcomed.

Please call 488-2470/2471 (extensions 251, 252, or 253) for more information.

SPRING 2018 NEW STUDENT ORIENTATION

Palau Community College (PCC) would like to inform the general public that the New Student Orientation for the Spring 2018 semester is scheduled for Monday, January 08, 2018. New students will meet with the staff of the Student Life Office to discuss the registration process, degree programs, and learning services available at the college. The New Student Orientation will be held at the PCC Assembly Hall. All new students are required to attend the orientation. For more information regarding the New Student Orientation, please contact the PCC Student Life Office at (tel): 488-2690, 488-3036, or 488-2470/2471

time: 8:00AM
place: PCC Assembly Hall
date: Monday, January 08, 2018

Palau Red Cross Society Donates to PCC



Palau Community College would like to thank Palau Red Cross Society for donating much needed apples, oranges, and candy cane treats during the Christmas Holiday. PCC Board of Trustees, President, Administrators, faculty, staff, and students wish you all good tidings this new year.

PCC 2018 SPRING SEMESTER STUDENT REGISTRATION PROCESS

New & returning students are reminded to follow the registration process when enrolling for the new semester. Please follow the four (4) simple steps to complete your registration process:

- 1. Pay \$50 Tuition Registration Fee at Business Office**
- 2. Pick-up Registration Packet at the Registrar's Office**
- 3. Meet with Counselor/Academic Advisor at the Student Life Office to discuss classes and program requirements for the semester**
- 4. Submit Class Schedule to the Registrar's Office for an Official Copy & Complete the Spring 2017 Registration**

PCC CAMPUS PROFILES

GUESS WHO!

RULES: GUESS THE PEOPLE FEATURED IN THE PHOTOGRAPH BELOW AND WIN A PRIZE COURTESY OF THE PCC DEVELOPMENT OFFICE. ALL STUDENTS ARE ELIGIBLE TO ATTEMPT THIS CHALLENGE.



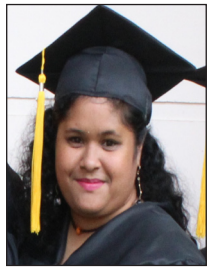
Palau Community College (PCC) has continued to strive because of the dedication & commitment of its employees. The photograph above features three (3) administrative members who have been employed at the college for many years. If you could identify all three as well as their current positions/job titles, the PCC Development Office will reward you. All students (except the students who are working for the PCC Development Office) are eligible to attempt this challenge. Please visit the PCC Development Office to submit your answer or call (tel): 488-2470/2471 ext. 251, 252, or 253 for more information. An answer will be featured in next week's newsletter!

ALUMNI NOTES

TRIXY M. ELLIS

(Class of 2017)

ASSOCIATE OF SCIENCE - BUSINESS ACCOUNTING



Ms. Trixy M. Ellis graduated from PCC in May 2017 with an AS Degree in Business Accounting. Ms. Ellis is currently working at Bank of Guam (BOG).



Mesekiu's News

Palau Community College

P.O. Box 9 Koror, Palau 96940

ALUMNI NOTES showcases MOC & PCC alumni who are positive role models and contribute to the quality of life in their local communities.

If you are that Alumna/Alumnus or know someone who is, please contact the PCC Development Office at telephone numbers 488-2470/2471 (extensions 251, 252, or 253).

We would like to feature you in future *Mesekiu's News* issues.

VACANCY ANNOUNCEMENT

- (1) Math Instructor/ Tutor (2)
(PCC Upward Bound Program Office)
depending on qualifications & hrs,
salary ranges from \$100 - \$200 biweekly
- (2) English Instructor/ Tutor (2)
(PCC Upward Bound Program Office)
depending on qualifications & hrs,
salary ranges from \$100 - \$200 biweekly
- (3) Tourism & Hospitality Instructor
(PCC Education and Training Department/
Academic Affairs Division) depending on
qualifications and work experience salary
ranges from \$16,010 - \$28,280 per annum
- (4) Air Condition & Refrigeration Instructor
depending on qualifications & work experience
salary range: \$16,010 - \$28,280 per annum
- (5) Construction Technology Instructor
depending on qualifications & work experience
salary range: \$16,010 - \$28,280 per annum
- (6) Social Studies/Humanities Instructor
depending on qualifications & work experience
salary range: \$16,010 - \$28,280 per annum
- (7) Community and Public Health Instructor
depending on qualifications & work experience
salary range: \$18,009 - \$31,810 per annum
- (8) Maintenance Technicians (4)
(Administration Department - Physical Plant)
salary range: \$8,155 - \$13,948 per annum
- (9) Library Assistant
(PCC Education & Training Department)
salary range: \$6,086 - \$10,408 per annum
- (10) Counselor
(PCC Student Services Division)
salary range: \$12,653 - \$19,479 per annum
- (11) Admissions Counselor
(PCC Student Services Division)
salary range: \$12,049 - \$20,607 per annum
- (12) Cook
(Administration Department)
salary range: \$6,086 - \$10,408 per annum
- (13) Accounting Technician (Purchase Order Technician)
(Administration Department - Business Office)
salary range: \$9,913 - \$16,954 per annum
- (14) Researcher/ Aquaculture
(Cooperative Research & Extension Office)
salary range: \$30,000 per annum
- (15) Researcher/ Agronomist
(Cooperative Research & Extension Office)
salary range: \$30,000 per annum
- (16) Researcher/ Food Technologist
(Cooperative Research & Extension Office)
salary range: \$30,000 per annum
- (17) Director Human Resources
(Administration)
salary range: \$18,730 - 28,833 per annum

For application forms and information, contact Harline Haruo at the PCC

Human Resources Office at 488-2470/2471 extension 227, or e-mail:
hr@palau.edu, or download forms at <http://pcc.palau.edu>.

"PCC is an Equal Opportunity Employer."

Celebrating Birthday

Siliang Michael



January 11

HAPPY BIRTHDAY!

PCC Endowment Fund

INVEST IN THE FUTURE OF OUR STUDENTS, OUR COLLEGE, AND OUR NATION

TO SUPPORT, CONTACT US TODAY!

P.O. BOX 9 Koror, Palau 96940

Phone: 488-2470/2471 (ext. 251/253)

e-mail: tellei@palau.edu

If you want to join the Bi-Weekly
Allotment Program, contact us NOW!

FIND PCC ONLINE FOR MORE INFORMATION



<http://pcc.palau.edu>



Palau Community College - PCC

stamp here