

FREE!!!



Palau Community College

MESEKIU'S NEWS



Friday, May 4, 2018

Weekly Newsletter

Volume 20, Issue 18

Maintenance Assistance Program Certification



Participants of the Maintenance Assistance Program with Dean Jefferson Thomas of Continuing Education and Dean Robert Ramarui of Academic Affairs

On April 13, 2018 The Maintenance Assistance Program held a Certificate Awarding Ceremony at the Palau Community College Continuing Education Training Room. Dean Robert Ramarui gave the participants welcoming remarks and Instructors Jerry Taroy of the Grid-Connected Photovoltaic Systems Course and Marvin Yarofaisug of the Green Machine Maintenance Course presented their reports on their respective courses.

Certificate Awarding for the Grid-Connected Photovoltaic Systems Course were done by Executive Director Gregorio Decherong and Director Brian Melairei. Participants who received their certificates were Darl Ellis, Bartolome Pipon, Kenny Obichang, Eric Manzano, Gerald Tulop, Adreline Remengesau, Jesse Ngiratred, Donald Damara,

MAP Continued on Page 3

COM Land Grant Meets at PCC



COM Land Grant Board of Regents: Masa-Aki N. Emesiochl, Churchill Edwards, and Minister Wilbur Heine with CMI President Theresa Koroivulaono, PCC CRE Vice President Thomas Taro, Pohnpei CRE Coordinator Engly Ioanis, PCC President Patrick U. Tellei, Land Grant Executive Director Dr. Singeru Singeo, and CMI Dean of CRE Stanley Lorennij

On April 30, 2018 Members of the College of Micronesia (COM) Land Grant Board of Regents met at the Palau Community College Cooperative Research and Extension Multi-Species Hatchery in Ngeremlengui State. Meeting discussions and reviews focused on the boards directives of the land grant programs. COM land grant programs are offered throughout Micronesia (Palau, Marshall Islands, and the FSM states of Yap, Chuuk, Pohnpei and Kosrae) by and thru the three national local colleges namely, Palau Community College, College of the Marshall Islands, and College of Micronesia-FSM in partnership with the College of Micronesia. Three categories of programs are offered: 1) Extension; 2) Research; and 3) Residential Instruction/Education. Land Grant funding are provided by the U.S. federal government through Hatch Act appropriation for Research programs, Smith-Lever Act appropriation for Extension programs and Endowment Fund which provides income to support instruction and related programs.

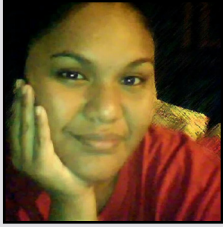


The Palau Community College Board of Trustees, President, Faculty, Staff, and Students wishes all of Palau a Happy Senior Citizens' Day!

Palau Community College is an accessible public educational institution helping to meet the technical, academic, cultural, social, and economic needs of students and communities by promoting learning opportunities and developing personal excellence.

PCC CELEBRATES 25 YEARS OF SUCCESS!

ALUMNI PROFILE



Danielle Dachelbai

Class of 2012

*Tourism & Hospitality: Food
and Beverage*

My name is Danielle Dachelbai and I was born and raised in Palau. I chose PCC because I can get my degree on the field I chose since high school, which is Tourism & Hospitality: Food and Beverage. Since we have a college here in Palau, I preferred to attend PCC and still be close to my family and friends. I had the chance to work as a work study student during my time at PCC. I worked closely with my instructor, assisting her with what needs to be done in the Food and Beverage classrooms, cleaning, organizing & filing paper work. I did my internship at the college Cafeteria and completed my hours while learning a lot from the cooks and chefs. The Instructor who really helped me was none other than the late Mrs. Soledad Garcia. She was an amazing teacher who was warm-hearted yet tough. There's one phrase she taught me and I've kept it since, "It's not about the money you make, it's about the job you do." I believe in what she said, it's not about the money you make in your job, it's about how much passion you put into your job that will make you succeed. I've learned so much from my time at PCC. As a student, I liked that I can get help when I was struggling with my studies or finances. Everything is provided and it's made easy for students to succeed. I was also a very active member of the Tourism club. My time at PCC allowed me to grow and become more independent and to never give up. After I graduated I worked at the Cliffside Hotel as a front desk agent, then after a few months PCC hired me. I started off as a cook at the Cafeteria then I became the Supply Clerk. I've been working here at the college for almost five years. My role as a Supply Clerk is to ensure and inspect the quality of the food products that will be prepared for the students daily meals. I still believe there's a bright future ahead. Mistakes made along the way will be dealt with, learned and corrected as I go. Spending time with the people I love is something I do in my free time. Today is the day you chose to make a difference in your path. You have complete control of your future, what makes you happy and wealthy will depend on how hard you work towards it. Never put yourself beneath of what you're capable of.

Japan Embassy Scholarships



*Japan Embassy
employees giving
interested students
presentation about
scholarships
opportunities*

On Friday April 27, 2018 Japan Embassy employees, Public Relations Assistant Anna Hideo and Administrative Staff Mayu Tatsuki were at Palau Community College Assembly Hall to present on the scholarships that the Embassy offer to the Palauan students interested in studying in Japan. Ms. Tatsuki showed a few pictures of the life and culture of Japan as well as her experiences in Palau and how similar our countries are. Ms. Hideo explained the scholarships available, Specialized Training College Programs, Undergraduate Programs, Research Programs, and Teacher Training College Programs. The embassy focused on Specialized Training and Undergraduate for the students. Specialized Training is a 3-year vocational learning experience. Students choose their field of study, and their first year will be spent learning the Japanese language. Undergraduate is a similar program but it is a 5-year program. Interested students are encouraged to have their personal information ready and apply for this scholarship. Applications are available at Student Services Office.

Newest Contributor PCC Endowment



Valeria Rengulbai

Palau Community College would like to recognize its newest Endowment Fund contributor, Valeria Rengulbai. Ms. Rengulbai works for Koror Elementary School. Thank you, Ms. Rengulbai, for your contribution to Palau's only institution of higher learning! Your donation will help sustain the future stability and programs of Palau Community College.

BITS AND PIECES...

Tan Siu Lin PCC Library

Hours of Operation

Monday to Thursday	7:30AM - 7PM
Friday	7:30AM - 5PM
Saturday	9AM - 6PM
Sunday	CLOSED

For more information, call:
488-3540.

AVAILABLE TO INTERESTED

READERS:

O: THE OPRAH MAGAZINE



O, The Oprah Magazine, sometimes simply abbreviated to O, is a monthly magazine founded by Oprah Winfrey and Hearst Communications, primarily marketed at women. It was first published on April 19, 2000. As of June 2004, its average paid circulation was over 2.7 million copies, two thirds by subscription. A South African edition was first published in April 2002; according to the South African Advertising Research Foundation, its average readership was over 300,000. The editor of the South African edition is Samantha Page. While most US magazine sales declined in 2009, O Magazine increased its newsstand sales by 5.8 percent to 662,304 copies during the second half of the year.

Academic Calendar: Spring 2018

May 3 (TH)

Last Day of Instruction

News/Stories Wanted

Mesekiw's News welcomes stories/articles/announcements from students, faculty, and staff. Submission deadline is Wednesday at 4:30 p.m. in hard and/or electronic copies to tchuziet@palau.edu or tchuziet@gmail.com.

Articles from MOC/PCC Alumni are also welcomed.

Please call 488-2470/2471 (extensions 251, 252, or 253) for more information.

MAP, Continued from page 1

Alban Ongino, Rogelio Villareno, Nino Flores, Antonio Penas, Sebastian Abenojar, and Rex Fernandez. Certificate Awarding for the Green Machine Maintenance Course were President Dr. Patrick U. Tellei and Governor Franco Gibbons. Participants who received their certificates were Serenade S. Mereb, Hartman Kumaichi, Floran Mad, Stallon Suong, and Ian B. Watanabe. Dean Jefferson Thomas gave a closing remarks by recognizing all participants for their perseverance and commitment.

PCC would like to thank all the participants for taking part in these training as we work together to further develop our workforce.

PCC EMS Students and Faculty at 2018 Island Sustainability Conference



(L-R) Dr. Patrick U. Tellei, President of PCC and Dr. Robert Underwood, President of UOG pose with PCC EMS students (Jacky, Maikani, Leah & Ongli) after the 2018 Conference Opening Plenary report from the Island Presidential Dialogue on Island Sustainability.

(L-R) PCC-EMS students Leah, Maikani, Ongli, PCC President, Dr. Patrick U. Tellei, Miss Earth-Guam, Jacky, & Associate Professor, Vernice.



The 2018 Island Sustainability Conference was held at University of Guam from March 26-30, 2018. Four PCC-EMS students gave poster presentations of their projects on conservation efforts in Palau.

The theme for this year's conference was "Island Alliance for Sustainable Action" which focused on moving toward stronger relationships among islands and 'islanded communities' that face common challenges due to geographic remoteness and related factors. Going paperless was a part of the 2018 conference's sustainability commitment and to access the conference app (agenda, abstracts, etc.), a Guidebook had to be downloaded on Androids or iOS device. The conference provided a venue for sharing, networking and discussing issues facing our islands and our region. Meaningful discussions about what sustainability means and how we can continue to collaborate to best achieve this important goal was the highlight of the conference sessions.

APPRECIATION



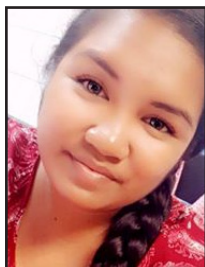
Palau Community College Faculty Senate Associate would like to extend its sincere appreciation to all the chefs, donors, participants, and supporters for the successful 9th Gentlemen's Gourmet on April 14, 2018

ALUMNI NOTES

MELVIRA KYARII KAZUMA

(Class of 2015)

ASSOCIATE OF ARTS & SCIENCE - OFFICE ADMINISTRATION



Melvira Kyarii Kazuma graduated from Palau Community College in May of 2015. She graduated with an Associate of Arts & Science Degree in Office Administration. She currently works at United.



Mesekii's News

Palau Community College

P.O. Box 9 Koror, Palau 96940

ALUMNI NOTES showcases MOC & PCC alumni who are positive role models and contribute to the quality of life in their local communities.

If you are that Alumna/Alumnus or know someone who is, please contact the PCC Development Office at telephone numbers 488-2470/2471 (extensions 251, 252, or 253).

We would like to feature you in future *Mesekii's News* issues.

VACANCY ANNOUNCEMENT

- (1) Math Instructor/ Tutor (2)
(PCC Upward Bound Program Office)
depending on qualifications & hrs,
salary ranges from \$100 - \$200 biweekly
- (2) English Instructor/ Tutor (2)
(PCC Upward Bound Program Office)
depending on qualifications & hrs,
salary ranges from \$100 - \$200 biweekly
- (3) Tourism & Hospitality Instructor
(PCC Education and Training Department/
Academic Affairs Division) depending on
qualifications and work experience salary
ranges from \$16,010 - \$28,280 per annum
- (4) Construction Technology Instructor
depending on qualifications & work experience
salary range: \$16,010 - \$28,280 per annum
- (5) Community and Public Health Instructor
depending on qualifications & work experience
salary range: \$18,009 - \$31,810 per annum
- (6) Financial Aid Counselor
(Student Services - Office of Financial Aid)
salary range: \$12,049 - \$20,607 per annum
- (7) Federal Work-Study Coordinator
(Student Services - Office of Financial Aid)
salary range: \$12,049 - \$20,607 per annum
- (8) Maintenance Technicians (4)
(Administration Department - Physical Plant)
salary range: \$8,155 - \$13,948 per annum
- (9) Library Assistant
(PCC Education & Training Department)
salary range: \$6,086 - \$10,408 per annum
- (10) Student Activities Specialist (2)
(Student Life - Recreation)
salary range: \$8,155 - \$13,948 per annum
- (11) Counselor
(PCC Student Services Division)
salary range: \$12,653 - \$19,479 per annum
- (12) Admissions Counselor
(PCC Student Services Division)
salary range: \$12,049 - \$20,607 per annum
- (13) Accounting Technician (Purchase Order Technician)
(Administration Department - Business Office)
salary range: \$9,913 - \$16,954 per annum
- (14) Researcher/ Food Technologist
(Cooperative Research & Extension Office)
salary range: \$30,000 per annum
- (15) Director Human Resources
(Administration)
salary range: \$18,730 - 28,833 per annum

For application forms and information, contact **Human Resources Office**
at 488-2470/2471 extension 227, or e-mail: hr@palau.edu, or download
forms at <http://pcc.palau.edu>.

"PCC is an Equal Opportunity Employer."

Celebrating Birthday

Gamberlyn Ngirmeril
Kuye Belelai
Lakolani Olengellel



May 8
May 13
May 13

HAPPY BIRTHDAY!

PCC Endowment Fund

INVEST IN THE FUTURE OF OUR STUDENTS, OUR COLLEGE, AND OUR NATION

**TO SUPPORT,
CONTACT US TODAY!**

P.O. BOX 9 Koror, Palau 96940

Phone: 488-2470/2471 (ext. 251/253)

e-mail: tellei@palau.edu

If you want to join the Bi-Weekly
Allotment Program, contact us NOW!

FIND PCC ONLINE FOR MORE INFORMATION



<http://pcc.palau.edu>



Palau Community College - PCC

WATER RATIONING FOR KOROR AND AIRAI

PPUC would like to inform the public that due to the National Emergency Committee's (NEC) declaration of Stage 2: Water Shortage Warning requiring Mandatory Water Rationing, the following water rationing schedule will be implemented for KOROR AND AIRAI ONLY.

WATER OFF

STARTING DATE 12:00 Mid Nite - 5:00am
Thursday, May 03, 2018

WATER ON

5:00am to 12:00 Mid Nite

stamp here