

FREE!!!

# Palau Community College



# MĚSEKIU'S NEWS



Friday, July 27, 2018

Weekly Newsletter

Volume 20, Issue 30

## 21st EMS Student Symposium Held



*Stanford Professor Dr. Stephen Palumbi, PICRC Mentors Marine Gouezo, Victor Nestor, Lincy Marino, and the Environment Marine Science students at student symposium at Palau Community College*

Monday, July 23, 2018: The 21<sup>st</sup> Science Symposium was held at Palau Community College in Classroom 66 at 10 am. The symposium featured Environmental/Marine Science students Masasinge Hideos, Mira Mariur, and Jackie Henley who interned at the Palau International Coral Reef Center (PICRC) during the summer. In their individual internship projects, Mr. Hideos monitored the youth tolerance of the coral *Porites Cylindrica*, which is abundant and easily identified which assisted in the research project. His research focused on comparing samples of *porites cylindrica* collected from a shallow reef of two meters and a deep reef of five meters and monitoring the bleaching rate. Ms. Mira Mariur did a research project about the Benefits and Effectiveness of PAN's at Ngerbeched. Her research focused on the protected areas and conducting a survey about the benefits of the PAN laws and how the people living in Ngerbeched feel about the laws and how they've helped the island. Ms. Henley did a research project monitoring Chronic Coral Bleaching Events in the Inner Bay Reefs. Her research focused on three isolated inner bay reefs located at Ngermid, Risong, and Taoch. Ms. Henley used temperature loggers to monitor the temperatures of the inner bay reefs and took pictures of the corals from different meters to better assess the damage of bleaching. The EMS students worked hard during their internship and their research projects helped **EMS**, Continued on Page 2

## Palau Association of Librarians Workshop



Monday, July 16, 2018: The Palau Association of Librarians held their workshop at the Palau Community College Continuing Education Training Room.

During the one week workshop, participants had discussions about strategies in how to motivate and engage students in the library to increase literacy, thinking skills, confidence and creativity as well as learning basic first aid and discussions between the librarians who attended the workshop.

Present for the workshop were Marphina Ilong Roduk, Annalisa Ngiraklei, Felisa Jean Remoket, Clarice Melus, Imengel Mad, Mary Arius, Gerda Setts, Jenevy Akitaya, Vania Tuich Ringang, Reilly Hideos, Ariel Shiro, Iyechad Towai, Early Salii, Coralee Echang, Jaselynn Pedro, Darlene Sintaro, Tanya Ngirkutel-ing, Mary Banphis, Pasquana Tirso, Moline Smaserul, Irene Geraldizo, Britney Isaac, Faith Rechetuker, Stephanie Minor, Helston Haleyalib, John Lamb, and Dilmouais Tulop.

*Palau Community College is an accessible public educational institution helping to meet the technical, academic, cultural, social, and economic needs of students and communities by promoting learning opportunities and developing personal excellence.*

# MOH TB Intensive Workshop



Monday, July 16, 2018: This workshop for clinicians provides comprehensive information on the principles and applications of TB diagnosis and treatment, as well as the management of TB special populations. Topics discussed during the workshop include transmission & pathogenesis, diagnosis and treatment, drug resistance, TB-HIV co-infection, TB in children and adolescents, and key aspects of patient management as well as lectures, interactive discussions, small group work, and case studies. Present for the workshop were Husayn Beketaut, Lorraine Beketaut, Minda Benjamin, Vanessa Espangel, Mariano Hagleisou, Allyne Kikuharu, Angela Marcil, Marciana Ngirailemesang, Julia Oiph, Rita Olkeriil, Alfred Pedro, Rufina Takashi, Sherly Timarong, Karolina Tukana, Kay Ann Yalap, Audra Et-pison, Lorraine Beketaur, Belinda Eungel.

EMS, Continued from Page 1  
Palau International Coral Reef Center as well as gave the students hands-on experience that will help them in their future goals to further their education.

# Upward Bound Classic Banquet



Wednesday, July 18, 2018: Palau Community College Upward Bound Program held their 35<sup>th</sup> Annual Graduation Banquet at Ming's Hall in Palasia Hotel from 10 am to 1 pm. The banquet celebrated the achievements of the graduating high school seniors who completed the program this year. PCC Upward Bound Program Director Kuye Belelai as well as the counselors & staff of the Upward Bound Program extend their best wishes to their recent graduates. May you all find success in the paths that you choose to follow!

# U.S. Army Swear -In Ceremony



*Photo (Left): PCC President Dr. Patrick U. Tellei, Her Excellency Ambassador Amy Hyatt, Honorable Raynold Oilouch, Vice President-ROP, LTCMDR Gina Becker, Pastor William Cheng, and the future soldiers Photo (Right): Future Soldier swearing in*

Friday, July 20, 2018: The United States Army swear-in ceremony took place at the PCC Cafeteria. Master of Ceremony SFC Garrett Frigon from Guam Recruiting Detachment began the ceremony welcoming all the people present to celebrate the men and women who have decided to join the army. Special remarks were made by Her Excellency U.S. Ambassador Amy J. Hyatt and the Honorable Vice President and Minister of Justice Raynold Oilouch. Her Excellency Amy Hyatt thanked all the future soldiers for choosing to serve for the United States and to wish the soldiers and their families the best. MC SFC Garrett Frigon took the time to recognize the men and women who have sworn themselves to serve the United States Army. Dawe Albert, Myna Albert, Dustin Bai Tellei, Clayven Belmog, Rdiall Deltang, Ricky Etomara, Dezirae Angie Falothol, Maxine Foruw, Erilane Ludah, Michael Marar, Trax Mark, Jaygee Merep, Techel-toech Osima, Chigano Rekemel, Sharon Ridep, Kekeok Sasao, McQuade Seklii, Elven Suzuki, Jada Tulmao, Richie Wichilib, K-ima William, Maya Meluat, Torres Uchel, Watson Winner, and Edwin Yaoch. Palau Community College would like to wish these young men and women and their families strength and hope in their future endeavors.



# BITS AND PIECES...

## Tan Siu Lin PCC Library

### Hours of Operation

Monday to Thursday 7:30AM - 7PM  
 Friday 7:30AM - 5PM  
 Saturday 9AM - 6PM  
 Sunday CLOSED

For more information, call:  
 488-3540.

### AVAILABLE TO INTERESTED

#### READERS:

### USA TODAY NEWSPAPER



USA TODAY is a multi-platform news and information media company. Founded in 1982, its mission is to serve as a forum for better understanding and unity to help make the USA truly one nation. USA TODAY delivers high-quality and engaging content across print, digital, social and video platforms. An innovator of news and information, we reflect the pulse of the nation and serve as the host of the American conversation — today, tomorrow and for decades to follow. We reach nearly three million readers daily, and our mobile applications attest to more than 24 million downloads on mobile devices.

### Academic Calendar

**July 27 (F)**  
 Grades Due by 11:00 am

**August 3 (F)**  
 Last Day for Changes of Grades

### News/Stories Wanted

Mesekiu's News welcomes stories/articles/announcements from students, faculty, and staff. Submission deadline is Wednesday at 4:30 p.m. in hard and/or electronic copies to [tchuziet@palau.edu](mailto:tchuziet@palau.edu) or [tchuziet@gmail.com](mailto:tchuziet@gmail.com).

Articles from MOC/PCC Alumni are also welcomed.

Please call 488-2470/2471 (extensions 251, 252, or 253) for more information.

# Newest Contributor PCC Endowment



Queency Tailimepiy

Palau Community College would like to recognize its newest Endowment Fund contributor, Queency Talimepiy. Mr. Talimepiy works for PCC. Thank you Mr. Talimepiy for your contribution to Palau's only institution of higher learning! Your donation will help sustain the future stability and programs of Palau Community College.



## Admissions & Records

### July 25, 2018 ANNOUNCEMENT

The Admissions & Records would like to inform the public about the Fall Semester 2018 activities. The following schedule dates of each activity have been set to accommodate both continuing, returning, readmitting, and new students. In order for all students to maximize and receive all the services that are available for them, we are requesting that you follow the schedule below:

### Schedule for Continuing Students from Spring & Summer 2018:

July 4th - August 6th                      Monday-Friday                      Registration continues

### Schedule for Returning & Readmitting Students:

Must Process Readmission form before you register

### Schedule for New Students:

August 1st - 3rd	Wednesday-Friday	Placement Testing
August 6th	Monday	New Student Orientation
August 7th - 8th	Tuesday - Wednesday	Registration
August 9th	Thursday	Late Registration

### August 13, 2018    Monday    First Day of Instruction

*Any questions or for more information about registration, please call 488-2470/2471, ext. 274 or 249. Our office hours are from 8:00 am - 5:00 pm, Monday to Friday. Thank You!*

## ANNOUNCEMENT

Show your support for the 2018 PCC Thanksgiving Endowment Fundraising Event by purchasing a \$10 Raffle Ticket! Your support will help Palau's only institution of higher learning continue to provide the much needed academic programs & training that will help sustain the future of our islands.

**2018 PCC Thanksgiving Endowment Fundraising Event will take place on Wednesday, November 21, 2018 from 11:30AM - 5PM at the PCC Mesekiu Bai**



For more information about the fundraiser, please contact the PCC Development Office at (tel): [488-2470/2471](tel:488-2470/2471) ext. 251, 252, or 253. You may also email the PCC Director of Development Tchuziet Tadao at [tchuziet@palau.edu](mailto:tchuziet@palau.edu) or [tchuziet@gmail.com](mailto:tchuziet@gmail.com).

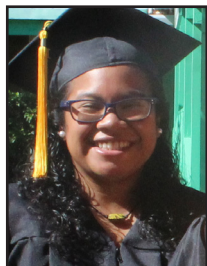
**SUPPORT THE 2018  
PCC  
THANKSGIVING  
ENDOWMENT  
FUNDRAISING  
EVENT**

## ALUMNI NOTES

### NIKKI S. UEHARA

(Class of 2018)

ASSOCIATE OF SCIENCE - CRIMINAL JUSTICE



Nikki S. Uehara graduated from Palau Community College in May of 2018. She graduated with a Associate of Science degree in Criminal Justice.

## VACANCY ANNOUNCEMENT

- (1) Math Instructor/ Tutor (2)  
*(PCC Upward Bound Program Office)  
depending on qualifications & hrs,  
salary ranges from \$100 - \$200 biweekly*
- (2) Science Instructor/ Tutor (2)  
*(PCC Upward Bound Program Office)  
depending on qualifications & hrs,  
salary ranges from \$100 - \$200 biweekly*
- (3) Foreign Language Instructor/ Tutor (2)  
*(PCC Upward Bound Program Office)  
depending on qualifications & hrs,  
salary ranges from \$100 - \$200 biweekly*
- (4) Tourism & Hospitality Instructor  
*(PCC Education and Training Department/  
Academic Affairs Division) depending on  
qualifications and work experience salary  
ranges from \$16,010 - \$28,280 per annum*
- (5) Construction Technology Instructor  
depending on qualifications & work experience  
salary range: \$16,010 - \$28,280 per annum
- (6) Community and Public Health Instructor  
depending on qualifications & work experience  
salary range: \$18,009 - \$31,810 per annum
- (7) Financial Aid Counselor  
*(Student Services - Office of Financial Aid)  
salary range: \$12,049 - \$20,607 per annum*
- (8) Federal Work-Study Coordinator  
*(Student Services - Office of Financial Aid)  
salary range: \$12,049 - \$20,607 per annum*
- (9) Maintenance Technicians (4)  
*(Administration Department - Physical Plant)  
salary range: \$8,155 - \$13,948 per annum*
- (10) Student Activities Specialist (2)  
*(Student Life - Recreation)  
salary range: \$8,155 - \$13,948 per annum*
- (11) Counselor  
*(PCC Student Services Division)  
salary range: \$12,653 - \$19,479 per annum*
- (12) Admissions Counselor  
*(PCC Student Services Division)  
salary range: \$12,049 - \$20,607 per annum*
- (13) Accounting Technician (Purchase Order Technician)  
*(Administration Department - Business Office)  
salary range: \$9,913 - \$16,954 per annum*
- (14) Researcher/ Food Technologist  
*(Cooperative Research & Extension Office)  
salary range: \$30,000 per annum*
- (15) Director Human Resources  
*(Administration)  
salary range: \$18,730 - 28,833 per annum*

For application forms and information, contact **Human Resources Office** at 488-2470/2471 extension 227, or e-mail: [hr@palau.edu](mailto:hr@palau.edu), or download forms at <http://pcc.palau.edu>.

**"PCC is an Equal Opportunity Employer."**

## PCC Endowment Fund

**INVEST IN THE FUTURE**  
OF OUR STUDENTS, OUR COLLEGE, AND OUR NATION

**To SUPPORT,  
CONTACT US TODAY!**

P.O. BOX 9 Koror, Palau 96940

Phone: 488-2470/2471 (ext. 251/253)

e-mail: [tellei@palau.edu](mailto:tellei@palau.edu)

If you want to join the Bi-Weekly Allotment Program, contact us NOW!

FIND PCC ONLINE FOR MORE INFORMATION



<http://pcc.palau.edu>



Palau Community College - PCC

stamp here



Mesekiu's News

Palau Community College

P.O. Box 9 Koror, Palau 96940