

FREE!!!



Palau Community College

MESEKIU'S NEWS



Friday, March 20, 2020

Weekly Newsletter

Volume 22, Issue 12

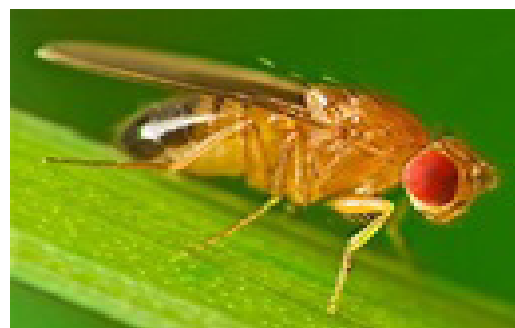
2020 Career & Technical Education Awareness Week



Dean of Academic Affairs welcoming students from Maris Stella Elementary School

This week, Palau Community College (PCC) hosted its Career & Technical Education (CTE) Awareness Week. On Wednesday, March 18, 2020 and Thursday, March 19, 2020 students from different elementary schools and high schools in Palau were invited to tour the campus and learn about the programs currently offered at the college. Students and staff members were led on tours by PCC ASPCC students. Campus tour stations included agricultural science, environmental/marine science, CTE lab school classroom, construction technology, welding, automotive technology, small engine & marine technology, air conditioning & refrigeration, electrical technology, general electronics technology, and information technology. Students from the following schools participated in the two-day event: Meyuns Elementary School, George B. Harris Elementary School, Peleliu Elementary School, Melekeok Elementary School, Emmaus-Bethania High School, Belau Modekngei School, Palau High School, Koror Elementary School, Ngaraard Elementary School, Ngarchelong Elementary School, Ngeremlengui Elementary School, Ngardmau Elementary School, and Maris Stella School. CTE AWARENESS WEEK, CONTINUED ON PAGE 2

Fruit Fly Management Study by PCC-CRE, STEP-UP & PAIR



The second part research by PCC-CRE, STEP-UP, and PAIR was on fruit fly management. Fruit flies have caused major damage in fruit trees across the Pacific and in Palau. They have caused 90% on fruit infection on the island. There are four known species of fruit flies; mango fruit fly (*Bactrocera frauenfeldi*), oriental fruit flies (*Bactrocera dorsalis*), breadfruit flies (*Bactrocera umbrosa*), and *Bactrocera calophylli*. The female flies damage newly ripened fruits by injecting their larvae into the fruits by their stinger. As the larvae grow, they devour the fruit from the inside out and also result in premature ripening of the fruit. Catching female fruit flies with existing methods have proven difficult, but a new cost-effective method is being tested and has produced promising results. Implementation of traps made of yeast waste, crushed papaya leaves and isopropyl alcohol carried out in small bottles hung on trees have proven effective in trapping 40 female *B. dorsalis*, 12 *D. melanogaster*, as well as 3 unidentified female flies. Future plans in expanding the methods and traps used are underway to trap and control fruit flies on a larger scale. More about the projects and research can be found at www.pairpalau.com.

UPDATE ON COVID-19

Below is a brief history of the measures taken by the College to address the spread of the COVID-19 pandemic:

January 31, 2020 - President Tellei issued a college-wide memo informing the PCC community of the rapid spread of the Coronavirus. Attachments to the memo were (1) Coronavirus Preventive and Response Measures, and (2) Ministry of Health-issued Coronavirus Information Flyer. The memo also urged staff to review the Epidemic Diseases section of the PCC Emergency Operations Manual. Furthermore, the memo informed everyone that a flyer indicating symptoms and preventive behavior/habits had been posted throughout the campus.

March 4, 2020 - President Tellei issued a special bulletin informing the school community that a potential first case being monitored, but had not tested positive. The memo urged everyone to maintain calmness and to continue to practice preventive measures, going on to list some of the practices that are recommended by the Ministry of Health. It also advised those who do not feel well to visit or contact the Belau National Hospital, as well as seek assistance from PCC officials.

On March 13, 2020 PCC President issued 'PCC Presidential Directive 020-001' banning all PCC funded off-island travel due to the COVID-19 pandemic as a means of preventing possible exposure.

March 19, 2020 - PCC instituted limited access to the PCC Library, starting March 23rd thru April 5th. During this period only individuals with a valid PCC student ID card are allowed entry. Available online Library services continue along with limited research services that may be rendered through other means.

PCC Faculty Senate Association 11th Annual
Gentlemen's Gourmet
FOOD TASTING EVENT

DATE: Saturday, April 25, 2020
TIME: 7:00 pm to 10:00 pm
PLACE: Ngarachamayong Cultural Center

Come and enjoy the culinary creations of local gentlemen & chefs.

Buy a ticket for only \$20.00 each and you will be entered for a chance to win fabulous prizes. Not only that, you will get 1 complimentary drink of your choice and the opportunity to taste some of the most delicious dishes from around the world.

Money raised will help secure scholarships for future PCC Students.

If you would like to be a chef, buy a ticket, or make a donation, please call 488-2471 ext. 240 and ask for Margie Buban, Emmel Meteolechol, Danki Ledgerwood, Derbei Meyar or any FSA member.

 Palau Community College
Faculty Senate Association
Registered Non-Profit Organization

CTE Awareness Week CONTINUED FROM PAGE 1



Air Conditioning Technology



Electrical Technology



Automotive Mechanics Technology



Small Engine & Outboard Marine Technology

BITS AND PIECES...

Tan Siu Lin PCC Library

Hours of Operation

Monday to Thursday 7:30AM - 7PM

Friday 7:30AM - 5PM

Saturday 9AM - 6PM

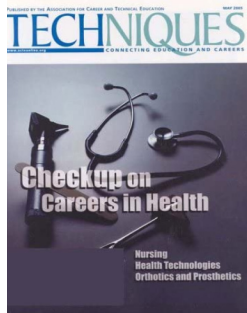
Sunday CLOSED

For more information, call:
488-3540.

AVAILABLE TO INTERESTED

READERS:

Techniques - Connecting Education & Careers Magazine



Techniques - Connecting Education & Careers magazine is published eight times annually by the Association for Career and Technical Education. Written for career and technical educators by career and technical educators, Techniques addresses the issues ACTE members care about most, providing input you can trust when making decisions for your classrooms, programs and school systems.

Academic Calendar

March 25, 2020

Last Day for All Withdrawals

March 26, 2020

Pre-Registration for Summer 2020

News/Stories Wanted

Mesekiw's News welcomes stories/articles/announcements from students, faculty, and staff. Submission deadline is Wednesday at 4:30 p.m. in hard and/or electronic copies to tchuziet@palau.edu or tchuziet@gmail.com.

Articles from MOC/PCC Alumni are also welcomed.

Please call 488-2470/2471 (extensions 251, 252, or 253) for more information.

Newest Contributors to the PCC Endowment Fund



Yalap P. Yalap



Efrin B. Tellei

Palau Community College would like to recognize our newest endowment fund contributors, Mr. Yalap P. Yalap and Mr. Efrin B. Tellei.

Mr. Yalap works at the Bureau of Archives & Research for the Ministry of Community & Cultural Affairs (MCCA). Mr. Tellei works in the division of Marshals - Palau Supreme Court.

Thank you Mr. Yalap and Mr. Tellei for your contributions to Palau's only institution of higher learning! Your donations will help sustain the future stability of our college.



P.O. Box 9, Koror
Republic of Palau
PW 96940
Tel: (680) 488-2470
Fax: (680) 488-2447

Accredited by
WESTERN ASSOCIATION OF
SCHOOLS AND COLLEGES

March 19, 2020

SPECIAL BULLETIN

TO : All PCC Library Patrons

FROM : PCC President

Re: Temporary Limited Access to PCC Library

In our efforts to mitigate the continued global spread of the COVID-19 virus, Palau Community College is hereby instituting limited access to the Tan Siu Lin PCC Library for the period of March 23, 2020 to April 5, 2020. During this period, only PCC students who present a valid PCC Student ID Card will be allowed to enter and utilize library services and resources.

Palau Community College encourages our patrons to call PCC Library at 488-2470/2471 or 488-3540 for services that may be rendered over the phone or thru email.

PCC regrets the inconvenience this may present to our patrons; however, we count on your understanding regarding this temporary arrangement and look forward to returning to full operation mode to meet your service and research needs. At the same time, as this is an evolving process, we ask our patrons to stand by in the event of changes to the resumption of full service.

Thank you everyone and be safe.

Patrick U. Tellei, EdD
President

VACANCY ANNOUNCEMENT

- (1) Director of Research and Development Station
(PCC Cooperative Research & Extension Office)
depending on qualifications & hrs,
salary ranges from \$18,730 - \$33,262 per annum
- (2) Computer Technician
(Computer Service Office)
depending on qualifications & hrs,
salary ranges from \$13,081 - \$23,230 per annum
- (3) Field Assistant (2)
(PCC CRE Multi-species Hatchery)
depending on qualifications & hrs,
salary ranges from \$7,800 - \$13,852 per annum
- (4) Extension Agent
(PCC Cooperative Research & Extension Program)
depending on qualifications & hrs,
salary ranges from \$11,010 - \$800 biweekly
- (5) Admissions Counselor (2)
(PCC Student Services Division-Registrar)
salary range: \$15,542 - \$27,600 per annum
- (6) Social Science/Humanities-Instructor
(PCC Education and Training Department/
Academic Affairs Division) depending on
qualifications and work experience
salary range: \$16,010 - 28,280 per annum
- (7) Director of Library Services
(Administration)
salary range: \$18,730 - 33,262 per annum
- (8) Construction Technology Instructor
(PCC Education and Training Department/
Academic Affairs Division) depending on qualifications
& work experience
salary range: \$16,010 - \$28,280 per annum
- (9) Instructor Assistant - Construction Technology
(PCC Education and Training Department/
Academic Affairs Division) depending on
qualifications and work experience
salary range: \$12,653.00 - 22,349 per annum
- (10) Instructor Assistant - Small Engine
(PCC Education and Training Department/
Academic Affairs Division) depending on
qualifications and work experience

ALUMNI NOTES

VIOLA NGIRNGETRANG

EDUCATION (ELEMENTARY EDUCATION)



Ms. Viola Ngirngetrang is an alumni of Palau Community College. She graduated in 2019 with an Associate Degree (AS) in Education (Elementary Education). Ms. Ngirngetrang is currently employed with Aimeliik Elementary School.



Mesekiu's News

Palau Community College

P.O. Box 9 Koror, Palau 96940

ALUMNI

showcases MOC & PCC alumni who are positive role models and contribute to the quality of life in their local communities.

If you are that Alumna/Alumnus or know someone who is, please contact the PCC Development Office at telephone numbers 488-2470/2471 (extensions 251, 252, or 253).

We would like to feature you in future *Mesekiu's News* issues.

Celebrating Birthday from March 21 - 27, 2020



Alins Nobuo

Antonio Angelio

Available scholarship opportunity for students in Tourism and Hospitality program and Construction Technology program.
For more information contact PCC Development Office at 488-2470/1

PCC Endowment Fund

INVEST IN THE FUTURE OF OUR STUDENTS, OUR COLLEGE, AND OUR NATION

To SUPPORT,
CONTACT US TODAY!

P.O. BOX 9 Koror, Palau 96940

Phone: 488-2470/2471 (ext. 251/253)

e-mail: tellei@palau.edu

If you want to join the Bi-Weekly Allotment Program, contact us NOW!

FIND PCC ONLINE FOR MORE INFORMATION



<http://www.palau.edu>



Palau Community College



P.O. Box 9, Koror
Republic of Palau
PW 96940
Tel: (680) 488-2470
Fax: (680) 488-2447

MEMORANDUM

March 13, 2020

TO : All Departments, Divisions and Offices
FROM : PCC President
SUBJECT : Indefinite Suspension of all Off-Island Travel Due to Covid-19 Pandemic

Pursuant to this memorandum, hereinafter referred to as "PCC Presidential Directive 020-001", the College is hereby immediately placing an Indefinite Suspension of all locally and federally funded PCC Off-Island travel due to the outbreak of Coronavirus (Covid-19) which is now pandemic as determined by the World Health Organization (WHO).

The College has been driven to make this decision as a protective measure against the possible exposure to Covid-19. The College encourages all employees to contact counterpart organizations, entities and make respective arrangements so that alternative options for networking may be explored, ie zoom and/or skype conferencing.

The College thanks everyone for adhering to this Directive and assures all that it will be lifted once it is safe to travel once again.

Thank you very much.

Patrick U. Tellei, EdD
President

Cc: Members, PCC Board of Trustees

stamp here