

FREE!!!

Palau Community College



MĚSEKIU'S NEWS



Friday, June 12, 2020

Weekly Newsletter

Volume 22, Issue 24

PCC President Official Statement on CARES Act

The Coronavirus Aid, Relief and Economic Security (CARES) Act was passed by U.S. Congress and signed into law on March 27, 2020, to provide economic relief from COVID-19. One section of the CARES Act established the Higher Education Emergency Relief Fund (HEERF) which sent money to schools to use for emergency financial aid grants to students for expenses related to the disruption of campus operations due to the pandemic. On April 30, 2020, Palau Community College signed and returned to the Department of Education (US DOE) the Certification and Agreement for Emergency Financial Aid Grants to students under the CARES Act. The total amount of CARES Act funds allocated to PCC is \$759,490. The CARES Act requires institutions to use no less than 50 percent of Higher Education Emergency Relief Fund (HEERF) funds to provide emergency financial aid grant to students.

PCC has received \$379,745.00 from the US DOE pursuant to the Certification and Agreement for Emergency Financial Aid Grants to students that was signed and returned to the US DOE on April 30, 2020. The CARES Act provides PCC with the ability to make funds available to students over a one-year period to help students successfully continue and complete their education.

PCC is awarding the emergency relief as follows:

- .Approximately \$189,872.00 will be awarded to eligible students who enrolled in Spring 2020 semester as of March 27, 2020.
- .The remaining \$189,873 will be awarded to eligible students enrolled in Summer session 2020 and Fall semester 2020.

PCC disbursed the first batch of funds under Section 18004(a)(1) of the CARES Act to Spring 2020 eligible students on Wednesday June 10, 2020.

PCC CRE Assesses CRB and Taro Growth in Palau

The PCC-CRE has been working with the Pacific Academic Institute for Research (PAIR), PCC Step Up Laboratory, and other international/national partners to assess the damage of the Coconut Rhinoceros Beetles (CRB) throughout Palau. Approximately 90% of trees showed light damage, yet even light damage affects the usefulness of the tree. Damage has increased recently in Palau and there are efforts being made to control/eradicate this invasive species.

Additionally, review of saltwater resistant versus normal taro planting at several sites that experience regular inundation were harvested recently and compared. Measurement of saltwater and tidal levels with respect to taro growth rates were taken to assess tidal cycles and effects of taro growth after being planted at different sites and times. Results, show that local varieties have their own innate salt water resistance, but further research is underway to verify. These programs along with other projects in developing food/medicine nurseries to ensure food security, a sustainable environment have been ongoing to ensure economic sustainability to adapt to these changing times. In order to ensure excellence, PCC-CRE has worked with numerous partners, to include students from the college and various high schools in programs that teach them skills such as

PCC CRE, CONTINUED ON PAGE 2

PCC CRE, CONTINUED FROM PAGE 1

DNA extraction on plant and animal cells, PCR sequencing, data analysis, and GIS mapping. This summer, PCC-CRE with PAIR is offering this opportunity to students who are interested in field-work throughout Palau to learn and teach problem-based learning skills through scientific research. The students will be exposed to real activities and work that is done in Palau and the region to promote future education in science and health; and eventually careers/activities on island that are sustainable.



Students Assessing Coconut Beetle



Temporary Closure of Main PCC Parking Lot

The main PCC parking lot along Ernguul road will be closed for renovation work beginning Sunday June 7, 2020 to Friday June 12, 2020. All students and employees are encouraged to use the parking lot across Roman Tmetuchl Building (formerly PDC), parking lots below SEBUS and SMUUCH Buildings, and the Palau National Track parking lot.



2020 ACCJC Commissioner Election Results and Appointments

On June 10, 2020 Palau Community College received a letter from Accrediting Commission for Community and Junior Colleges (ACCJC) providing Commissioner Election Results and Appointments.

The Nominating Committee of the ACCJC is pleased announce the results of the election as well as confirm the reappointment of three appointed Commissioners.

Elected Commissioners:

- Barbara Dunsheath - East Los Angeles College, Academic Member
- Sally Pestana - Kapi'olani Community College, Academic Member
- Mike Zimmerman - MTI College, Independent Institution Member
- Jennifer Vega La Serna - College of Sequoias, Chief Instruction Officer Member

Appointed Commissioners:

- Mary A.Y. Okada - Pacific Postsecondary Education Council Member
- Daisy Gonzales - California Community Colleges Chancellor's Office Member
- Carmen Sigler - WASC Senior College and University Commission Member



**June 15 - July 10, 2020
SUMMER KIDS PROGRAM 2020**
FOLLOWING CLASSES ARE TO BE OFFERED.....

- 3rd to 8th Grade Singapore Math
- 3rd to 8th Grade English Reading & Writing
- 3rd to 8th Grade Palauan Orthography
- 3rd to 8th Grade Art
- 3rd to 8th Grade Music
- 6th to 8th Grade Marine Science

PCC Continuing Education offer classes that are designed to provide educational activities for students, enhance their abilities to improve in the subject areas, and foster new skills.

All MOH COVID 19 Preventive Measures will be practiced during the program.

Where to Register?
PCC
Continuing Education Office

How much does it Cost?
\$30 per class

Class Time:
Math 8am – 10am
English 10am – 12pm
Palauan 1pm – 3pm
Art 3pm – 5pm
Music 10am – 12pm
Science 1pm – 3pm

Registration Begin
June 02, 2020
Registration End
June 05, 2020

For more information regarding this program & registration, please contact Courtney T. Joshua at PCC Continuing Education Office, Telephone # (680)488-6223 or (680)488-2470/2471 ext. 243/239 or by email to telngaic@palau.edu



Mesulang!

BITS AND PIECES...

Tan Siu Lin PCC Library

Hours of Operation

Monday to Thursday	7:30AM - 7PM
Friday	7:30AM - 5PM
Saturday	9AM - 6PM
Sunday	CLOSED

For more information, call:
488-3540.

AVAILABLE TO INTERESTED READERS:

Auto Restorer Magazine



Each issue is written for people who are interested in all aspects of collecting, showing and/or restoring vintage automobiles and trucks. *Auto Restorer* appeals to both the seasoned enthusiast and novice alike with in-depth, how-to articles that guide you with full color photos through restoration projects step by step. Plus, you can rest assured that you are reading the most unbiased, honest reviews.

Academic Calendar

June 26, 2020

Last Day to Remove Incomplete Grades for Spring 2020

News/Stories Wanted

Mesekiw's News welcomes stories/articles/announcements from students, faculty, and staff. Submission deadline is Wednesday at 4:30 p.m. in hard and/or electronic copies to tchuziet@palau.edu or tchuziet@gmail.com.

Articles from MOC/PCC Alumni are also welcomed.

Please call 488-2470/2471 (extensions 251, 252, or 253) for more information.

Newest Contributors to the PCC Endowment Fund



Rochelle Rivera Thomas



Hulda Obak

Palau Community College would like to recognize our newest endowment fund contributors, Ms. Rochelle Rivera Thomas and Ms. Hulda Obak.

Ms. Thomas works for the Ministry of Education (MOE)- Palau High School (P.H.S).

Ms. Obak also works for Office of the President.

Thank you Ms. Thomas and Ms. Obak for your contributions to Palau's only institution of higher learning! Your donations will help sustain the future stability of our college.

FACE COVERING CHECKLIST

- ✓ Fits snugly against the side of the face
- ✓ Can be secured with ties or ear loops
- ✓ Includes multiple layers of fabric
- ✓ Allows for breathing without restriction
- ✓ Is machine washable without damage or change to shape



AVAILABLE SCHOLARSHIP

SCHOLARSHIP OPPORTUNITIES FOR CONSTRUCTION TECHNOLOGY AND TOURISM & HOSPITALITY STUDENTS

SCHOLARSHIP APPLICATIONS ARE NOW AVAILABLE AT PCC DEVELOPMENT OFFICE

FOR MORE INFORMATION VISIT DEVELOPMENT OFFICE OR CALL 488-2470/1 ext. 251/252/253 or email tchuziet@palau.edu

VACANCY ANNOUNCEMENT

- (1) Vice President Cooperative Research & Extension
(PCC Cooperative Research & Extension Office)
depending on qualifications & hrs,
salary ranges from \$21,911 - \$38,911 per annum
- (2) Director of Research and Development
(PCC Cooperative Research & Extension Office)
depending on qualifications & hrs,
salary ranges from \$18,730 - \$33,262 per annum
- (3) Computer Technician
(Computer Service Office)
depending on qualifications & hrs,
salary ranges from \$13,081 - \$23,230 per annum
- (4) Field Assistant (2)
(PCC CRE Multi-species Hatchery)
depending on qualifications & hrs,
salary ranges from \$7,800 - \$13,852 per annum
- (5) Extension Agent
(PCC Cooperative Research & Extension Program)
depending on qualifications & hrs,
salary ranges from \$11,010 - \$800 biweekly
- (6) Admissions Counselor (2)
(PCC Student Services Division-Registrar)
salary range: \$15,542 - \$27,600 per annum
- (7) Social Science/Humanities-Instructor
(PCC Education and Training Department/
Academic Affaris Division) depending on
qualifications and work experience
salary range: \$16,010 - 28,280 per annum
- (8) Director of Library Services
(Administration)
salary range: \$18,730 - 33,262 per annum
- (9) Construction Technology Instructor
(PCC Education and Training Department/
Academic Affaris Division) depending on qualifications
& work experience
salary range: \$16,010 - \$28,280 per annum
- (10) Instructor Assistant - Construction Technology
(PCC Education and Training Department/
Academic Affaris Division) depending on
qualifications and work experience
salary range: \$12,653.00 - 22,349 per annum

ALUMNI NOTES

MASASINGE T. HIDEOS

ENVIRONMENTAL/ MARINE SCIENCE



Mr. Masasinge T. Hideos is an alumni of Palau Community College. He graduated in 2018 with an Associate of Science Degree (AS) in Environmental/ Marine Science. Mr. Hideos recently received his Bachelors Degree from the University of Hawaii at Hilo



Mesekiu's News

Palau Community College

P.O. Box 9 Koror, Palau 96940

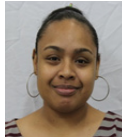
ALUMNI

showcases MOC & PCC alumni who are positive role models and contribute to the quality of life in their local communities.

If you are that Alumna/Alumnus or know someone who is, please contact the PCC Development Office at telephone numbers 488-2470/2471 (extensions 251, 252, or 253).

We would like to feature you in future *Mesekiu's News* issues.

Celebrating Birthday in June 12-19 2020



Raven S. Kloulubak



Cecilia Olikong



Albino Haflelung



Dr. Christopher Kitalong

VACANCY ANNOUNCEMENT CONT'

- (11) Instructional Assistant - Small Engine
PCC Education and Training Department/
Academic Affaris Division) depending on
qualifications and work experience
salary range: \$12,653.00 - 22,349 per annum
- (12) Instructor Assistant - Math
PCC Education and Training Department/
Academic Affaris Division) depending on
qualifications and work experience
salary range: \$600 - 800 biweekly
- (13) Instructor Assistant - English
PCC Education and Training Department/
Academic Affaris Division) depending on
qualifications and work experience
\$600 - 800 biweekly
- (14) Instructor Assistant - Science
PCC Education and Training Department/
Academic Affaris Division) depending on
qualifications and work experience
\$600 - 800 biweekly
- (15) Instructor Assistant - Foreign Language
PCC Education and Training Department/
Academic Affaris Division) depending on
qualifications and work experience
\$600 - 800 biweekly

For application forms and information, contact Harline Haruo at the PCC

Human Resources Office at 488-2470/2471 extension 227, or e-mail:

hr@palau.edu, or download forms at <http://pcc.palau.edu>.

"PCC is an Equal Opportunity Employer."

PCC Endowment

**INVEST IN THE FUTURE
To SUPPORT,
CONTACT US TODAY!**

P.O. BOX 9 Koror, Palau
96940

Phone: 488-2470/2471 (ext. 251/253)

e-mail: tellei@palau.edu

If you want to join the Bi-Weekly
Allotment Program, **contact us NOW!**

FIND PCC ONLINE FOR MORE INFORMATION



<http://www.palau.edu>



Palau Community College

stamp here