

FREE!!!



Palau Community College

MESEKIU'S NEWS



Friday, January 08 2021

Weekly Newsletter

Volume 23, Issue 02

New Student Orientation Spring Semester 2021



PCC President Dr. Tellei and Student Service staff during orientation

On January 04, 2020 Palau Community College (PCC) held a New Student Orientation for the students enrolling in the spring semester. The orientation introduced the new students to the programs and services available at the college. PCC President Dr. Patrick U. Tellei began the orientation by welcoming the new students and thanked them for choosing PCC as a next step in their education journey and advised the students to prioritize their education but never forget to have fun. Dean of Students Hilda N. Reklai followed with an introduction to the services available at the college designed to help the students achieve academic success as well as the rules and regulations of PCC. Dean Reklai also introduced Student Services staff from financial aid office, admissions & registrar, student life, dormitory, learning resource center/AANAPISI, and ASPCC President. The new students were assigned to their respective majors under School of Business, School of Arts & Science, and School of Technical Education with Advisors Maurine Alexander, Shelley Ueki, Crane Moses, and After their advising session with the advisors, students were led on a tour of the college campus by ASPCC Minelli-Rain Olkeriil.

PCC CTE Lab School Parents, Teachers & Students Meeting



PCC Dean of Academic Affairs Deikola Olikong during parents & students meeting at Assembly Hall

PCC CTE Lab School PTA Meeting was held on the evening of Wednesday, January 6, 2021 at the Assembly Hall with parents/guardians, students and teachers. The meeting was held to register students into the next level of the program; parents and their children were reminded of School policies and regulations; parents and students received their spring 2021 class schedule; as well as received important information and tips to help students succeed spring 2021. Ninety Five percent of students and parents attended the meeting with the School's three teachers and the School administrator. The meeting was very informative and well received by all attendees. PCC CTE Lab School wishes the College Board of Trustees, College President, students, faculty and staff a Happy and Blessed New Year.

Newest Contributors to the PCC Endowment Fund

Palau Community College would like to recognize our newest endowment fund contributors, Jamalyn Bitlaol, Ngrachewes Nick Katosang, Burton Solang, and Keylord Omengebar from Palau Shipping Company; Connie Bieb Olikong, Eden Kintaro Muna, Audra Etpison, Alzena Fleetwood from CDU program-Bureau of Public Health, Ministry of Health; Roxana Lawichifeg from Division of Environmental Health, Ministry of Health; Melvira Kazuma and Shanonne Oseked from Protected Area Network (PAN) office; Christa Sikyang from the Bureau of Agriculture-Ministry of Natural Resources, Environment, and Tourism; Kazuo Uraziri, Shayna Osarch, and Trisha Obakerbau from the Revenue and Taxation, Ministry of Finance and Jenifer D. Gicole from Kayangel State Government.

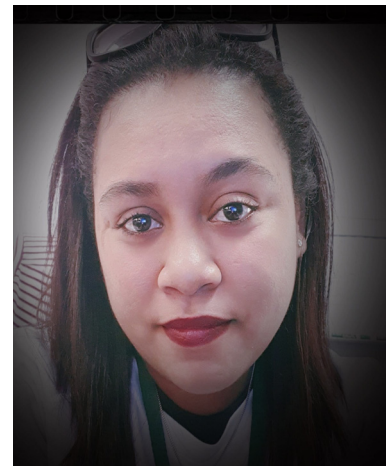
Thank you all for your contributions to Palau's only institution of higher learning! Your donations will help sustain the future stability of our college.



Ngrachewes Katosang & Jamalyn Bitlaol



Connie Bieb Olikong



Eden K. Muna



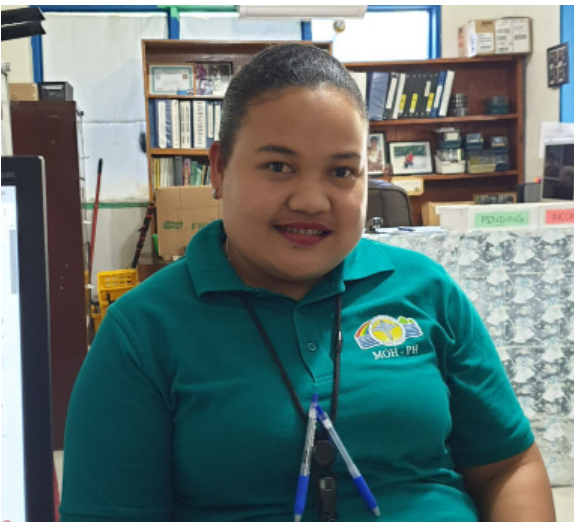
Shayna Osarch and Trisha Obakerbau



Jenifer D. Gicole



Kazuo Uraziri



Roxana Lawichifeg



Christa Sikyang



Melvira Kazuma

BITS AND PIECES...

Tan Siu Lin PCC Library

Hours of Operation

November 23, 2020 to
January 08, 2021

Monday to Friday 8:00AM - 5PM

Saturday 9AM - 6PM

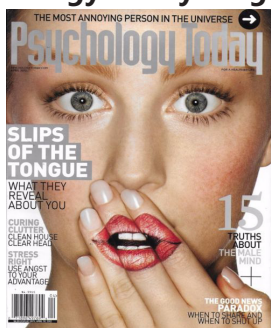
Sunday & Holidays CLOSED

For more information, call:
488-3540.

AVAILABLE TO INTERESTED

READERS:

Psychology Today Magazine



This magazine takes information from the latest research in the field of psychology and makes it useful to people in their everyday lives. Its coverage encompasses self-improvement, relationships, the mind-body connection, health, family, the workplace and culture.

Academic Calendar

January 11 -15, 2021

Drop & Add Period

January 15, 2021

Last Day to Change CR/NC

News/Stories Wanted

Mesekiu's News welcomes stories/articles/announcements from students, faculty, and staff. Submission deadline is Wednesday at 4:30 p.m. in hard and/or electronic copies to tchuziet@palau.edu or tchuziet@gmail.com.

Articles from MOC/PCC Alumni are also welcome.

Please call 488-2470/2471 (extensions 251, 252, or 253) for more information.

PCC Spring Semester 2021 Registration Continues

Special Announcement

Students planning to enroll in Spring Semester 2021 must see Academic Advisor/Counselor before enrolling in classes.

Registration Period

January 04 - January 15, 2021

SCHEDULE FOR THE SPRING SEMESTER 2021 (16 WEEKS)

January 04 (M)

New Student Orientation

April 01-02 (TH-F)

Student's Spring Break

January 07-08 (TH-F)

Late Registration

April 02 (F)

PCC Charter Day

January 11 (M)

First Day of Instruction

April 16 (F)

Last Day for All Withdrawals

January 11-14 (M-TH)

Credit by Examination
Period

April 19 (M)

Registration for Summer 2021

January 11-15 (M-F)

Drop & Add Period

April 23 (F)

Last Day of Instruction

January 15 (F)

Last Day to Change CR/NC

April 26-30 (M-F)

Final Examination Period

&

Audit Grade Options

April 30 (F)

Last Day to Remove
Incomplete Grades for Fall
2020

February 08 (M)

Non Instructional Day-No
Class

May 05 (W)

Holiday: Senior Citizens Day

March 1-5 (M-F)

Mid-Term Period (16
Instructional Weeks)

May 07 (F)

Grades Due by 11:00 am

March 15 (M)

Holiday: Youth Day

May 14 (F)

Commencement Exercises

March 31 (W)

PCC Charter Day

VACANCY ANNOUNCEMENT

- (1) Vice President Cooperative Research & Extension
(PCC Cooperative Research & Extension Office)
salary ranges from \$21,911 - \$38,911 per annum
- (2) Director of Research and Development
(PCC Cooperative Research & Extension Office)
salary ranges from \$18,730 - \$33,262 per annum
- (3) Computer Technician
(Computer Service Office)
salary ranges from \$13,081 - \$23,230 per annum
- (4) Field Assistant (2)
(PCC CRE Multi-species Hatchery)
salary ranges from \$7,800 - \$13,852 per annum
- (5) Extension Agent
(PCC Cooperative Research & Extension Program)
salary ranges from \$11,010 - \$800 biweekly
- (6) Admissions Counselor (2)
(PCC Student Services Division-Registrar)
salary range: \$15,542 - \$27,600 per annum
- (7) Social Science/Humanities-Instructor
(PCC Education and Training Department/
Academic Affaris Division) depending on
qualifications and work experience
salary range: \$16,010 - 28,280 per annum
- (8) Director of Library Services
(Administration)
salary range: \$18,730 - 33,262 per annum
- (9) Construction Technology Instructor
(PCC Education and Training Department/
Academic Affaris Division) depending on qualifications
& work experience
salary range: \$16,010 - \$28,280 per annum
- (10) Instructor Assistant - Construction Technology
(PCC Education and Training Department/
Academic Affaris Division) depending on
qualifications and work experience
salary range: \$12,653.00 - 22,349 per annum

ALUMNI NOTES

EDEN KINTARO MUNA

AUTOMOTIVE MECHANICS



Eden Kintaro Muna is a graduate of Palau Community College in 2014 with an Associate of Applied Science Degree in Automotive Mechanics Technology. She is currently employed at CDU-Public Health



Mesekiu's News

Palau Community College

P.O. Box 9 Koror, Palau 96940

ALUMNI

showcases MOC & PCC alumni who are positive role models and contribute to the quality of life in their local communities.

If you are that Alumna/Alumnus or know someone who is, please contact the PCC Development Office at telephone numbers 488-2470/2471 (extensions 251, 252, or 253).

We would like to feature you in future *Mesekiu's News* issues.

Celebrating Birthday January 8 - 15, 2020



Ngerwach Franz



Shelby Edesomel



Eric Manzano



Michael Siliang



Suzette Hinojales



Harline Haruo

VACANCY ANNOUNCEMENT CONT'

- (11) Instructional Assistant - Small Engine
PCC Education and Training Department/
Academic Affaris Division) depending on
qualifications and work experience
salary range: \$12,653.00 - 22,349 per annum
- (12) Instructor Assistant - Math
PCC Education and Training Department/
Academic Affaris Division) depending on
qualifications and work experience
salary range: \$600 - 800 biweekly
- (13) Instructor Assistant - English
PCC Education and Training Department/
Academic Affaris Division) depending on
qualifications and work experience
\$600 - 800 biweekly
- (14) Academic Advisor/Counselor
PCC Talent Search Program
salary range: \$17,000 - 20,000 per annum
- (15) Library Assistant
PCC Library
salary range: \$8,502 - \$15,098

PCC Endowment

**INVEST IN THE FUTURE
To SUPPORT,
CONTACT US TODAY!**

P.O. BOX 9 Koror, Palau
96940

Phone: 488-2470/2471 (ext. 251/253)

e-mail: tellei@palau.edu

If you want to join the Bi-Weekly
Allotment Program, contact us NOW!

FIND PCC ONLINE FOR MORE INFORMATION



<http://www.palau.edu>



Palau Community College

VACANCY ANNOUNCEMENT CONT'

- (16) Dean of Students
(PCC Student Services Office) depending on
qualifications and work experience
salary ranges from \$18,730 - \$33,262 per annum
- (17) Director, Student Life
(PCC Student Life Office) depending on
qualifications and work experience
salary ranges from \$16,010 - \$28,431 per annum

For application forms and information, contact Harline Haruo at the PCC

Human Resources Office at 488-2470/2471 extension 227, or e-mail:

hr@palau.edu, or download forms at <http://pcc.palau.edu>.

"PCC is an Equal Opportunity Employer."

stamp here