

FREE!!!



Palau Community College

MESEKIU'S NEWS



Friday, April 09, 2021

Weekly Newsletter

Volume 23, Issue 15

PCC STAFF UNDERGO EMERGENCY FIRST AID/CPR TRAINING



PRCS Health & Social Service Officer Michelle Ueda & PCC staff during a CPR & First Aid training

On April 01, 2021 Palau Red Cross Society (PRCS) conducted a Cardiopulmonary resuscitation & First aid training to twenty-five PCC staff from various offices of the college. PRCS Health and Social Service Officer Michelle Ueda conducted a one-day training on the goals & objectives in preserving and saving lives, concepts & principles of improvisation during emergency or accident, legal consent, health risks and hazards such as direct contact and airborne transmission of diseases, prevention & protection using mask and gloves, and proper use of personal protective equipment (PPE). PCC staff also learned the basics before giving CPR and actual steps of performing cycles of chest compressions and breathing in order to save lives. College staff participating in the training were Demy Emesiochel, Tessmarie Kodep, Kesina Tadao, Eudora Lucio, Quilva Isims, Mary Banphis, Wiles Tmecherur, Koliano Yaiungeitiw, McKingstein Rivera, Larry Wakakoro,

CPR TRAINING CONTINUED ON PAGE 2

PCC President Dr. Tellei Meets Cooperative Research & Extension Researchers and Staff



PCC President Dr. Tellei, Vice President of CRE Dr. Kitalong, Vice President of Admin. & Finance Jay Olegeriil, ASPCC President Milleni-Rain Olkeriil, and CRE staff

On Wednesday, April 7, 2021 PCC President Patrick U. Tellei and Vice President Jay Olegeriil formally announced the incoming Vice President of Cooperative Research & Extension (CRE) Dr. Christopher U. Kitalong during a luncheon meeting at the college conference room.

President Tellei initiated a welcoming statement to all CRE staff including introduction of Dr. Kitalong's new leadership role and asked for staff support and cooperation to the new Vice President of CRE. Dr. Kitalong's role as Vice President of CRE will ensure the continuation of CRE's integrated research and extension programs to address economic, social, and ecological issues as aligned with the college and the republic's priority. As such, programs to promote agricultural productivity, food security, aquacultural demonstration projects, educational and community outreach programs continue to serve the needs of our community.

ETS CONDUCTED EDUCATIONAL FIELD TRIPS TO PELELIU



Maris Stella Elementary School



Airai Elementary School

On March 31 and April 3, 2021 Palau Community College Educational Talent Search (ETS) program conducted two field trips to Peleliu State.

ETS program participants from 6th to 8th graders at Maris Stella School and Airai Elementary School visited Peleliu's cultural and historical sites including famous World War II relics.

The purpose of these field trips are to enhance students understanding and knowledge of Palau's traditional and cultural history as a component of ETS educational activities required to be offered to students participating in the program.

ETS is known by elementary and high schools in Palau for assisting students by providing activities such as study skills workshop, career exploration and research, financial aid and budgeting awareness, precollege advisement, parent workshop, test-taking strategies, time management, and goal setting.

Upcoming ETS field trip is scheduled to Kayangel State. Academic counselors Mr. Angelio Antonio and Ms. Lakolani Olngellel lead the planning and arrangement of activity. Both Maris Stella School and Airai Elementary School extend a sincere thanks to ETS program and staff for providing much needed educational activities.

CPR TRAINING CONTINUED FROM PAGE 1

Akiko Udui, Janyssa Ford, Maurine Alexander, Shelley Ueki, Crane Moses, Demira Kumangai, Bellarmino Fagolur, Dedoscia Costanza, Isumechraard Ngirairikl, Dilmeang Ishim, Ember Nakamura, Telbakes Yano, Cecilia Olikong, Benjamin Buliche, and Dizzete Dolmers. PCC congratulates college staff for their participation and determination to support and save lives.



Photo contributed by Palau Red Cross Society

UNDERSEA WORLD OF PELAGIC FISH



PCC Cafeteria Undersea Mural

Soon to be one of the amazing undersea world of pelagic mural on campus. The art wall beautifully depicts Palau's pelagic fish and turtle including our very own Mesekiu masgot featured in the center of the mural.

Presidential Proclamation No. 21-297

The President of the Republic of Palau, His Excellency Surangel Whipps, Jr. has declared April 19 -23, 2021 as Earth Day week with the theme of

“Restore Our Earth: Be A Part of the Solution; Olutel a Klebekelel a Beluulechad: Dekauklelem e Dekedmeklii”

BITS AND PIECES...

Tan Siu Lin PCC Library

Hours of Operation

Mondays to Fridays	7:30AM - 7PM
Saturday	7:30AM - 5PM
Sunday & Holidays	CLOSED

For more information, call:
488-3540.

AVAILABLE TO INTERESTED READERS:

Tennis Magazine



Tennis Magazine is dedicated to the sport of tennis. Featured in the magazine is the coverage of professional tennis competitions, tips and advice from professionals on improving readers' skills on the court, and informative gear reviews. It covers anything from popular racquets to tennis shoes. Also included are question and answer sessions meant to inform readers on which types of gear they should be looking at for their specific tennis needs.

Academic Calendar

April 16 (F)

Last Day for all Withdrawals

News/Stories Wanted

Mesekiu's News welcomes stories/articles/announcements from students, faculty, and staff. Submission deadline is Wednesday at 4:30 p.m. in hard and/or electronic copies to tchuziet@palau.edu or tchuziet@gmail.com.

Articles from MOC/PCC Alumni are also welcome.

Please call 488-2470/2471 (extensions 251, 252, or 253) for more information.

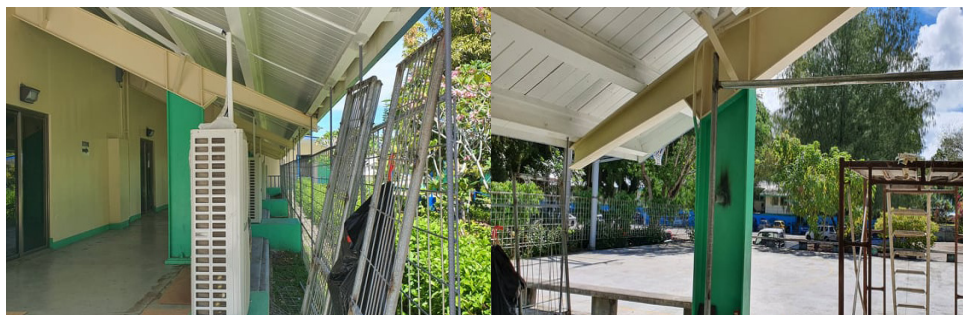
Public Announcement

The Ministry of Health (MOH) has announced that the COVID-19 Vaccination program will be open to the public on Monday, April 19, 2021. Anyone ages 18 or older can call for their vaccination schedule. For more information call the following numbers 488-0555, 7795553, 775-5960 or 775-8671 for appointment. Students are urged to call or visit Dean of Students for their appointment.

Classified Staff Organization Meeting



On April 07, 2021 Palau Community College Classified Staff Organization met to discuss pertinent issues regarding the organization's future initiatives. One of the immediate and most pressing issue is to decide on the election of the new president.



PCC Cafeteria fences being erected

58th Commencement Exercises of Palau Community College

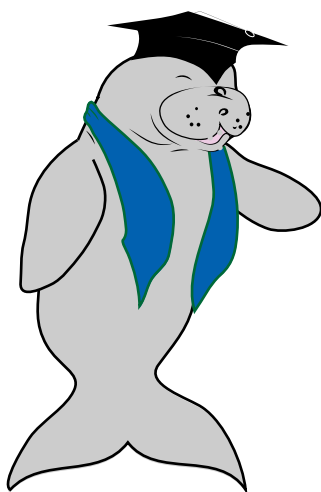
The college takes this opportunity to announce its 58th Commencement Exercises on Friday, May 14, 2021 at 10AM. The event will take place at the PCC Cafeteria. The PCC Graduating Class of 2021 include:

PCC Adult High School Graduates

PCC CTE Lab School Graduates

PCC Program Graduates

San Diego State University Graduates



VACANCY ANNOUNCEMENT

- (1) Computer Technician
(Computer Service Office)
salary ranges from \$13,081 - \$23,230 per annum
- (2) Extension Agent EFNEP
(PCC Cooperative Research & Extension Program)
salary ranges from \$11,010 - \$19,552.00 per annum
- (3) Director of Library Services
(Administration)
salary range: \$18,730 - 33,262 per annum
- (4) Instructor Assistant - Small Engine
PCC Education and Training Department/
Academic Affairs Division) depending on
qualifications and work experience
salary range: \$12,653.00 - 22,349 per annum
- (5) Maintenance & Operations Supervisor
Physical Plant - Administration Department
depending on qualifications and work experience
salary range: \$16,941.00 - 30,085 per annum
- (6) Math Instructor
Learning Resource Center
Student Services
depending on qualifications and work experience
salary range: \$14,802 - 22,000 per annum
- (7) Academic Advisor/Counselor
PCC Talent Search Program
salary range: \$17,000 - 20,000 per annum
- (8) Director, Student Life
(PCC Student Life Office) depending on
qualifications and work experience
salary ranges from \$16,010 - \$28,431 per annum

For application forms and information, contact Harline Haruo at the PCC
Human Resources Office at 488-2470/2471 extension 227, or e-mail:
hr@palau.edu, or download forms at <http://www.palau.edu>.

"PCC is an Equal Opportunity Employer."

ALUMNI NOTES

VALYNE ILEK

BUSSINESS ADMINISTRATION



Valyne T. Ilele is a graduate of Palau Community College in 2019 with an Associate of Science in Business Administration Program. She is currently employed at Calvo's Select Care Health Insurance



Mesekiu's News

Palau Community College

P.O. Box 9 Koror, Palau 96940

ALUMNI

showcases MOC & PCC alumni who are positive role models and contribute to the quality of life in their local communities.

If you are that Alumna/Alumnus or know someone who is, please contact the PCC Development Office at telephone numbers 488-2470/2471 (extensions 251, 252, or 253).

We would like to feature you in future *Mesekiu's News* issues.

Celebrating Birthday April 09-18, 2021



Tessmarie Kodep



McKnight McArthur



Glendalynn Ngirmeriil



Gaylord Rdechor

Palau Community College up-coming training at CE Training Room.

Palauan Orthography Class

Fundamentals of Geographic Information System (GIS) Spatial Training

Registration is ongoing at CE Office. For more information contact 488-2470/1 ext. 243

PCC Endowment

INVEST IN THE FUTURE To SUPPORT, CONTACT US TODAY!

P.O. BOX 9 Koror, Palau
96940

Phone: 488-2470/2471 (ext. 251/253)

e-mail: tellei@palau.edu

If you want to join the Bi-Weekly Allotment Program, contact us NOW!

FIND PCC ONLINE FOR MORE INFORMATION



<http://www.palau.edu>



Palau Community College

UNIFYING PRINCIPLES

Unifying Principles are highly valued statements or beliefs which form the basis for policy setting, planning, our daily interaction with one another, and our decision making. They serve as cornerstones on which we build a successful institution.

Palau Community College believes in:

Quality Services - *Kot el ngarbab el lomeruul*

More unifying principles in the forthcoming issues

stamp here