

FREE!!!



Palau Community College

MESEKIU'S NEWS



Friday, March 11, 2022

Weekly Newsletter

Volume 24, Issue 10

PALAU ATMOSPHERIC OBSERVATORY AT A GLANCE



contributed by Dr. Katrin Muller, Alfred-Wegener-Institute (AWI) March 2022

The Palau Atmospheric Observatory, established during the European StratoClim project has now been recording atmospheric data for 6 years, lately overcoming many obstacles caused by the global pandemic in a story of success! Continuous measurements and trouble-shooting on site during the long absence of the scientists and technicians from AWI (Alfred-Wegener-Institute) and IUP (Institute of Environmental Physics, University of Bremen) were performed with great effort and excellence by local CRRF staff.

We are happy to finally be able to return to Palau to perform major maintenance on the lab infrastructure and instrumentation and to engage again with the Palauan public and community to show our research. Our engineers Jürgen “Egon” Graeser (AWI) and Wilfried Ruhe (impres GmbH) arrived in the end of February and will

Palau Atmospheric Observatory part 1 Continued on p. 2

SPECIAL BULLETIN

STARTING MONDAY, MARCH 14, 2022

ALL TRADITIONAL COURSES WILL BE CONDUCTED FACE-TO-FACE AS WELL AS IN-PERSON PART OF ALL HYBRID COURSES

ANY QUESTIONS, PLEASE SEE YOUR INSTRUCTOR

PCC PRESIDENT MEETS EMBASSY OF JAPAN- HEAD OF POLITICAL AFFAIRS



Mr. Kenta Karamoto and PCC President Dr. Patrick U. Tellei

On March 8, 2022 Mr. Kenta Karamoto, head of political affairs at Embassy of Japan met with PCC President Dr. Patrick U. Tellei to discuss collaborative efforts and mutual working relationship with the Embassy of Japan in Palau.

PCC PRESIDENT APPOINTMENT'S OF 2022 CHARTER DAY COMMITTEE



On March 3, 2022 PCC President Dr. Tellei through appointment letter, selected members of the 2022 Charter Day Organizing Committee in preparation for the 29th Annual Charter activity. Committee members are UB Director Larry Wakakoro, Dean of CE Hedrick Kual, Dean of Students Hilda N. Reklai, Dorm Manager

Charter Day Continued on p. 2

Palau Community College is an accessible comprehensive public educational institution helping to meet the technical, academic, cultural, social, and economic needs of students and communities by promoting learning opportunities and developing personal excellence.

Palau Atmospheric Observatory Part 1, Continued from p. 1

stay until the 1st of April, launching balloon sondes and re-deploying the lidar system. The public is invited to the Observatory or join a balloon launch at the stadium. Furthermore, we would like to revive our outreach program by giving a talk at the PCC Assembly Hall.

The current campaign run by AWI focuses on the balloon sounding program with ozone, water vapor and aerosol measurements and the cloud and aerosol lidar instrument in preparation of this year's major event in summer: a US and international research aircraft campaign taking place in the West Pacific in July/August 2022. ACCLIP, the Asian Summer Monsoon Chemical and Climate Impact Project, is led by the US institute NCAR and NASA and aims to investigate the impacts of Asian gas and aerosol emissions on global chemistry and climate via the linkage of Asian Summer Monsoon convection and associated large-scale dynamics over the Western Pacific ocean.

Prior to the CoVid-19 pandemic, European scientists and technicians have been visiting the Observatory for seven intensive campaigns of 1-3 months since 2015 and presented their work and data during their stays on various occasions and in many talks to Palauan students and the public at PCC, PHS or the Rotary Club. We are grateful for the warm welcome in Palau and all the support by local institutions and authorities and want to in return share our knowledge and results.

We participate in this major campaign as a ground station, launching balloons in coordination with the flight schedule of two research aircrafts and 7 other sounding sites in Korea, Japan and China.

Atmospheric Observatory Part 2 continues in forthcoming issues

Charter Day Continued from p. 1

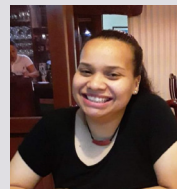
Ephraim Ngirachitei, Assistant to the President Todd Ngiramengior, Director of Development Tchuzie Tadao, Director of Talent Search Clara Maile Andreas, Director of Admissions & Record Lesley B. Adachi, UB Counselor Debra Ngiraingas, CSO President Keith Ignacio, Maintenance Supervisor Willes Tmecherur, Food Service Supervisor Gurney Lee Umang, FSA President Johvanna Yaoch, Library Interim Director Pioria W. Asito, and ASPCC President Weber Santiago.

Newest Contributors to PCC Endowment Fund

Palau Community College (PCC) would like to recognize our newest endowment fund contributors, Ms. Ann Lund from Academic Affairs Division, Ms. Mariah C. U. Lund from Ministry of Education-Melekeok Elementary School, and Mr. Artee N. Tellei from OEK-Senate.



Ann Lund



Mariah C. U. Lund



Artee N. Tellei

Thank you for your contributions to Palau's only institution of higher learning! Your donations will help sustain the future stability of our college.

Campus Beautification by Maintenance Crew



PCC Recreation Office and storage room undergo facelift. Ceilings and walls were replaced and new paint work was performed, all part of the college's beautification program.



Admission & Records Office Public Announcement

To All PCC Students

**Registration
for**

**Summer Session 2022 begins
Monday, April 18, 2022**

BITS AND PIECES...

Tan Siu Lin PCC Library

Hours of Operation

Monday to Thursday	7:30AM - 7PM
Friday	7:30AM - 5PM
Saturday	9:00AM - 6PM
Sunday & Holiday	CLOSED

For more information, call:
488-3540.

AVAILABLE TO INTERESTED

READERS:

PRACTICING ANTHROPOLOGY



Practicing Anthropology is a career-oriented publication of the Society for Applied Anthropology. Its overall goals are to provide a vehicle of communication and source of career information for anthropologists working outside academia, to encourage a bridge between practice inside and outside the university, and to explore the uses of anthropology in policy research and implementation to serve as a forum for inquiry into the present state and future of anthropology in general.

Academic Calendar

March 15

Holiday: Youth Day

News/Stories Wanted

Mesekiw's News welcomes stories/articles/announcements from students, faculty, and staff. Submission deadline is Wednesday at 4:30 p.m. in hard and/or electronic copies to tchuziet@palau.edu or tchuziet@gmail.com.

Articles from MOC/PCC Alumni are also welcome.

Please call 488-2470/2471 (extensions 251, 252, or 253) for more information.

ROC Taiwan Scholarship Opportunity

2022 ICDF Programs at Kun Shan University

Mechanical Engineering
4-year undergraduate program
>> Bachelor of Science

NEW!

2-year senior technology program
>> Bachelor of Science

NEW!

Mechatronics Automation Engineering and Management

2-year postgraduate program
>> Master of Science

Apply with

- a high school/vocational high school degree or equivalent
- an evidence of B2 English level

Apply with

- an Associate Bachelor degree or equivalent (an associate title (título de asociado/ grado asociado / tecnico/ pregrado)
- an evidence of B2 English level

Apply with

- a Bachelor degree or equivalent
- an evidence of B2 English level

Application Open from January 1st – March 15th

Free Tuition

Free Flight Tickets

Free Dormitory

Free Tuition

Free Flight Tickets

Free Dormitory

Scope of Curriculum

1. Bachelor of Science "Department of Mechanical Engineering

- Energy Engineering
- Engineering Mathematics
- Applied Mechanics
- Computer Aided Engineering

2. Bachelor of Science "International Two-year Senior Technology

- Engineering Mathematics
- Applied Mechanics
- Computer Aided Design
- Design of Mechanical Elements

3. "International Master Program on Mechatronics Automation Engineering and Management"

- Artificial Intelligence and Automatic Control
- Development and Application of Industrial Robots
- Computer-Aided Design and Manufacturing Simulation/Integration Application
- Control Design of Intelligent Mechatronics System



Application Period : January 1st, 2022 - March 15th, 2022

For more information :

1. <http://www.ksu.edu.tw/eng/unit/D/7/CE/MED>
2. <http://www.icdf.org.tw/ct.asp?xItem=12505&CNode=30316&mp=2>

ATTENTION STUDENTS!!!



DUE TO COVID-19 PANDEMIC, PCC IS PROVIDING FREE PNCC PREPAID AIRTIME. STUDENTS CAN PICK UP THEIR AIRTIME CARDS @ INSTITUTIONAL RESEARCH & EVALUATION OFFICE (IREO) OR CALL CECILIA OLIKONG @ 488-2470 EXT. 250 EMAIL: ceciliao@palau.edu for more information.

VACANCY ANNOUNCEMENT

- (1) Computer Technician
(Computer Service Office)
salary range: \$13,081 - \$23,230 per annum
- (2) Director of Library Services
(Administration)
salary range: \$18,730 - 33,262 per annum
- (3) Instructor Assistant - Small Engine
PCC Education and Training Department/
Academic Affairs Division) depending on
qualifications and work experience
salary range: \$12,653.00 - 22,349 per annum
- (4) Security Service Officer
Multi-Species Hatchery - CRE Department
depending on qualifications and work experience
salary range: \$9,267.00 - 16,457.00 per annum
- (5) Math Instructor
Learning Resource Center
Student Services
depending on qualifications and work experience
salary range: \$14,802 - 22,000 per annum
- (6) Instructor Assistant - Auto Mechanics
(Academic Affairs)
salary ranges from \$12,653 - \$22,349 per annum
- (7) Part-time Tutors
PCC Talent Search Program
salary range: \$500 - 1,200 per annum
School Year 2021-2022
Federally funded program

Celebrating Birthdays

March 11 - 20, 2022



Gibson Towai



Thomas Borja



Evan Ongrung



Nicanor Orjaliza Jr.



Ember Nakamura



Keith Ignacio



Bruce Rimirch

PCC Endowment

**INVEST IN THE FUTURE
To SUPPORT,
CONTACT US TODAY!**

P.O. BOX 9 Koror, Palau
96940

Phone: 488-2470/2471 (ext. 251/253)

e-mail: tellei@palau.edu

If you want to join the Bi-Weekly
Allotment Program, contact us NOW!

FIND PCC ONLINE FOR MORE INFORMATION



<http://www.palau.edu>



Follow us on
Palau Community College
Facebook Page

ALUMNI NOTES

HARRISON UMANG LIBERAL ARTS PROGRAM



Harrison Umang is a graduate of Palau Community College in 2021 with Associate of Arts in Liberal Arts Program. He is currently employed at Student Service as Administrative Assistant to the Dean of Students.



Mesekiu's News

Palau Community College

ALUMNI

showcases MOC & PCC alumni who are positive role models and contribute to the quality of life in their local communities.

If you are that Alumna/Alumnus or know someone who is, please contact the PCC Development Office at telephone numbers 488-2470/2471 (extensions 251, 252, or 253).

We would like to feature you in future *Mesekiu's News* issues.

VACANCY ANNOUNCEMENT CONT

- (8) Administration Department (Business Office)
Accounting Technician (Purchase Order-Technician)
Annual salary range: \$9,913.00 - \$16,954.00
- (9) Cook
Administrative Department (Food Service)
salary ranges from \$8,502.00 - \$15,098.00
- (10) Senior Research Assistant
(PCC Cooperative Research & Extension)
salary range: \$12,001 - \$21,312 per annum

**THE PCC-BASED
SCHOLARSHIP
APPLICATIONS ARE
AVAILABLE AT THE PCC
DEVELOPMENT OFFICE. FOR
MORE INFORMATION**

CONTACT: DEVELOPMENT OFFICE

@

488-2470/2471 EXT. 252 OR 253

**SUBMIT COMPLETE APPLICATION TO
DEVELOPMENT OFFICE BY MARCH 29, 2022**

stamp here