

FREE!!!

# Palau Community College



## MESEKIU'S NEWS



Friday, December 16, 2022

Weekly Newsletter

Volume 24, Issue 49



### PCC STUDENTS ATTENDED ANTI-CORRUPTION DAY



*l to r: Kato Remeliik, Chriiktoi Taima, Paula Sadang, Alven Choi, Arianne Benhart, and O'Keef Kokichi*

On December 9, 2022 the Associated Students of Palau Community College (ASPCC) and Student Trustee participated in Anti-Corruption Day activities at Ngarachamayong Cultural Center.

PCC students are ASPCC President-Elect Kato Remeliik, ASPCC Sophomore Rep. Chriiktoi Taima, RPSO President Paula Sadang, YSO President Alven Choi, ASPCC President Arianne Benhart, and Student Trustee O'Keef R. Kokichi. The Anti-Corruption Day event also includes high schools students with activities such as parade and anti-corruption video contest. The plenary sessions were also hosted by the Office of Special Prosecutor and U.S. Embassy in Palau at Ngarachamayong Cultural Center. President Surangel Whipps, Jr. delivered his special remarks to reaffirmed his commitment on anti-corruption legislation and government policies followed by Ms.

Anti-Corruption Day CONTINUED ON PAGE 2



### PCC PRESIDENT DR. TELLEI BRIEF AUSTRALIAN DIGNITARIES ABOUT PALAUAU BAI



*Australia Minister for Foreign Affairs Penny Wong, ROP President Surangel Whipps, Jr., Australian Senator Hon. Simon Birmingham, ROP Minister of State Gustav Aitaro, and PCC President Dr. Patrick U. Tellei*



*Ulengchong Scott Yano, PCC President Dr. Tellei, Australian Senator Hon. Simon Birmingham, ROP President Surangel Whipps, Jr., Australia Minister for Foreign Affairs Penny Wong, and ROP Minister of State Gustav Aitaro*

On December 15, 2022 PCC President Patrick U. Tellei mediates information about the traditional Bai at Belau National Museum used by Palauan Council of Chiefs for meetings, feasts, trials, disaster preparedness, war strategy sessions, and mourning to Australia Minister for Foreign Affairs Penny Wong and her colleague Australian Senator the Honorable Simon Birmingham. Also present during press conference were Palau local newspaper representatives from Tia Belau, Island Times, and Australian associated press.

## Anti-Corruption Day CONTINUED FROM PAGE 1

April D. Cripps, Palau's Special Prosecutor. Special Guests were Australian Ambassador Rachel Turner, Japan Ambassador Oikasa Hiroyuki, ROC-Taiwan Ambassador Jessica Lee, Charg' d' Affaires, US Embassy in Palau Mr. Jim Boughner, and Bilung Gloria G. Sali.

## REL PACIFIC TEAM FACILITATES PALAU'S PRIVATE SCHOOLS TRAINING



*Palau private schools principals, vice principals, and teachers with PCC President Dr. Tellei, REL Pacific team: Ebil Orrukem, Drs. Bradley Rentz, Erin Chapparo, and McREL Regional Advisor Dr. Sinton Soalablai during training session*

The Regional Education Laboratory (REL) Pacific team of Megan Taylor, Ebil Orrukem, Dr. Mark You, and Dr. Sinton Soalablai recently facilitated the third of four training sessions with the private school teams focusing on teacher effectiveness held at the Palau Community College campus. The training participants included principals and teachers from Belau Modekngai High School, Emmaus Bethania High School, Maris Stella Elementary School, Mindszenty High School, Palau Mission Academy, and Seventh Day Adventist Elementary School. This training session was to build a shared understanding of the “PLAN” and “DO” components of PDSA (Plan, Do, Study, Act) inquiry cycles to learn more about effective teaching

REL Pacific CONTINUED ON NEXT COLUMN

## EDUCATIONAL TALENT SEARCH NEAR COMPLETION



PCC Talent Search Office storage room is at its last phase of construction. Expected to be completed within two-weeks.

## REL Pacific CONTINUED FROM PREVIOUS COLUMN



*McREL Regional Advisor Dr. Sinton Soalablai, Researchers Dr. Bradley Rentz, Dr. Erin Chapparo, and PCC President Dr. Patrick U. Tellei*

within each participating school's context, understand PDSA improvement models, specifically the “STUDY” component, understand leading and lagging indicators in the measurement of teacher effectiveness, and learn about the action period activity focused on developing a framework to collect and monitor teacher effectiveness data. The first three sessions were held on August 10–11, September 14–15, and December 13–14. The REL Pacific team will facilitate the fourth and final session on April 18–19, 2023, on using and monitoring data for decision-making and continuous improvement. Leaders from the Palau Ministry of Education (MOE) and Palau Community College, in addition to a consortium of private school leaders, are working in partnership with REL Pacific to support teacher effectiveness, focusing on identifying and measuring indicators of effective teaching in Palau schools. In addition, McREL International researchers Drs. Bradley Rentz, Erin Chapparo, and Regional Advisor Dr. Sinton Soalablai met with PCC President Dr. Patrick Tellei, who also chairs the REL Pacific Governing Board, about applied research on teacher education pathways. REL Pacific is one of 10 Regional Educational Laboratories (RELs) funded by the Institute of Education Sciences (IES) in the U.S. Department of Education. REL work is evidence-based and supports meaningful local, regional, or state decisions about education policies, programs, and practices designed to improve learner outcomes. REL Pacific partners with educators and policymakers in American Samoa, the Commonwealth of the Northern Mariana Islands, Federated States of Micronesia, Guam, Hawai'i, the Republic of the Marshall Islands, and the Republic of Palau.



## BITS AND PIECES...

### Tan Siu Lin PCC Library

#### Hours of Operation

Monday to Friday 8:00AM - 5:00PM

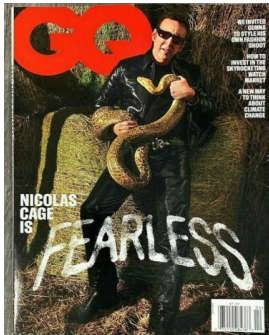
Saturday, Sunday & National Holidays CLOSED

For more information, call:  
488-3540.

#### AVAILABLE TO INTERESTED

##### READERS:

##### GQ - US EDITION



Gentlemen's Quarterly exquisitely combines all of these ideas and puts together a compelling and intriguing magazine that truly defines what it really means to be a gentleman. In this monthly magazine one can find all the information they would ever need about knowing how to dress in many different situations, including casual, business, and even swim style.

#### Academic Calendar

**December 12-22, 2022**

Placement Testing for Spring 2023

**December 30, 2022**

Last day to Remove Continuing Progress Grades for Summer 2022

#### News/Stories Wanted

*Mesekiu's News* welcomes stories/articles/announcements from students, faculty, and staff. Submission deadline is Wednesday at 4:30 p.m. in hard and/or electronic copies to [tchuziet@palau.edu](mailto:tchuziet@palau.edu) or [tchuziet@gmail.com](mailto:tchuziet@gmail.com).

Articles from MOC/PCC Alumni are also welcome.

Please call 488-2470/2471 (extensions 251, 252, or 253) for more information.

### Accrediting Commission for Community and Junior Colleges (ACCJC), the Commission Third-Party Comment

A third-party comment assists the Commission as it considers applications for candidacy, accreditation, or reaffirmation of accreditation. When an institution is undergoing a review, the Commission requires the institution's chief executive officer to notify the campus community and public of the opportunity for submission of third-party comments and the process for doing so. Any member of the college community or public may submit a third-party comment by completing the Commission's online third-party comment form, available via the institution's website or ACCJC's website. In order to ensure evaluation of applicable third-party comments by the peer review team, third-party comments should be received by the Commission staff no later than five weeks before the peer review team visit.

Palau Community College's Focus Site Visit is scheduled during the week of March 13, 2023. Should any member of the College community or the public who may wish to submit a third-party comment must complete the Commission's online third-party comment form available at <https://accjc.org/forms/third-party-comments/>.

The third-party comment should be received by the Commission five weeks prior to March 13, 2023.

Commission's Address: Accrediting Commission for Community and Junior Colleges  
331 J Street, Suite 200  
Sacramento, CA 95814  
P: (415) 506-0234 | E: [accjc@accjc.org](mailto:accjc@accjc.org)



## Palau Community College

**Invites All Bi-Weekly Donors to the College Endowment Fund to JOIN US at the Annual**

### "End-Of-The-Year Get Together Of All Bi-Weekly Contributors Event"

**When: Friday, Dec 30, 2022**

**Where: PCC Mesekiu Bai**

**Time: 11:30 a.m - 3:30 p.m.**

**Tax Refund Forms  
Are Available!**

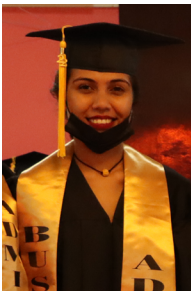
**Each Contributor Will  
Receive 2 Raffle Drawing Tickets & a Chance to  
Win Many Wonderful Prizes**

## VACANCY ANNOUNCEMENT

- (1) Instructor, Liberal Arts program  
*Academic Affairs Division*  
salary ranges from \$16,010 - \$28,280 per annum
- (2) Instructor, Construction Technology  
*Academic Affairs Division*  
salary range: \$16,010 - \$28,280 per annum
- (3) Instructor, Small Engine & Outboard Marine Tech.  
*Academic Affairs Division*  
salary range: \$12,653.00 - \$22,349 per annum
- (4) Extension Agent (EFNEP Program)  
*(PCC Cooperative Research & Extension)*  
salary range: \$11,010 - \$19,552 per annum
- (5) Instructor Assistant - General Mechanics  
*Academic Affairs Division*  
salary ranges: \$12,653 - \$22,349 per annum
- (6) Instructor-Air Condition & Refrigeration  
*Academic Affairs Division*  
salary ranges: \$16,010 - \$28,280 per annum
- (7) Extension Agent  
*(PCC Cooperative Research & Extension)*  
salary range: \$11,010 - \$19,552 per annum
- (8) Nursing Instructor  
*Academic Affairs Division*  
salary ranges: \$16,010 to \$28,280
- (9) System Analyst  
*Administration & Finance - Computer Room*  
salary range: \$16,010 - \$28,431 per annum

## ALUMNI NOTES

### BRITNEY IDELKEI BUSINESS ADMINISTRATION



Ms. Britney Idelkei is a graduate of PCC in Spring 2022 with an Associate of Science in Business Administration. She's currently working at Palau National Communications Corporation.



*Mesekiu's News*

Palau Community College

## ALUMNI

showcases MOC & PCC alumni who are positive role models and contribute to the quality of life in their local communities.

If you are that Alumna/Alumnus or know someone who is, please contact the PCC Development Office at telephone numbers 488-2470/2471 (extensions 251, 252, or 253).

We would like to feature you in future *Mesekiu's News* issues.

## Celebrating Birthdays

December 18 - 25, 2022



Gurney Lee Umang



Armstrong Debelbot



Kristy Olkeriil

SPRING  
2023  
REGISTRATION  
Is  
STILL ON-GOING  
FOR  
CONTINUING  
&  
RETURNING STUDENTS

## PCC Endowment

**INVEST IN THE FUTURE  
To SUPPORT,  
CONTACT US TODAY!**

P.O. BOX 9 Koror, Palau  
96940

Phone: 488-2470/2471 (ext. 251/253)

e-mail: [tellei@palau.edu](mailto:tellei@palau.edu)

If you want to join the Bi-Weekly Allotment Program, contact us NOW!

## VACANCY ANNOUNCEMENT

- (10) Director of Development  
*Office of the President*  
Salary ranges: \$18,730 to \$33,262
- (11) Instructor, Automotive Technology  
*Academic Affairs Division*  
salary ranges: \$16,010 - \$28,280 per annum
- (12) Math Instructor  
*Academic Affairs Division*  
salary ranges: \$16,010 - \$28,280 per annum
- (13) Instructor, Tourism & Hospitality  
*Academic Affairs Division*  
salary ranges: \$16,010 to \$28,280.00
- (14) Instructor, Community & Public Health  
*Academic Affairs Division*  
salary ranges: \$16,010 to \$28,280.00
- (15) Academic Counselor/Advisor  
*Upward Bound Program*  
salary ranges: \$19,000 - \$21,500
- (16) Upward Bound Program Instructors & Tutors:  
*Math, English, Science, & Academic*  
salary ranges: \$100 to \$250 biweekly
- (17) Math Coordinator  
*Upward Bound Math & Science*  
salary ranges: \$19,000 to \$23,000
- (18) Senior Research Assistant  
*PCC Cooperative Research & Extension*  
salary range: \$12,001 - \$21,312 per annum
- (19) Executive Assistant to the President  
*Office of the President*  
salary range: \$16,010 - \$28,431 per annum

stamp here