

FREE!!!



# Palau Community College

## MESEKIU'S NEWS



Friday, June 13, 2025

Weekly Newsletter

Volume 27, Issue 24

### 38<sup>TH</sup> CAREGIVER TRAINING AWARDING CEREMONY

#### JAPAN ENERGY EXPERTS VISIT PCC



*Dr. Louisa Santos, Physical Therapist Philip M. Gepty, Dr. Sylvia Osarch, Olive Charnoske- Yoach, PCC President Dr. Patrick U. Tellei, Dean Hedrick Kual, and Administrative Assistant Wililah F. Xavier with participants in PCC Assembly Hall*

On June 11, 2025, Palau Community College Continuing Education, in conjunction with the Palau Area Health Education Center (AHEC), organized the 38th Caregiving Training Awarding Ceremony at the PCC Assembly Hall. Present to commend the training participants and to offer remarks were PCC President Dr. Tellei, who shared a brief history of the Caregiving Training program since its inception in 2013, and Ms. Yaoch, who discussed the training details, funding, and the significance of sustaining this program to assist local community caregivers who tend to our elders. Dr. Osarch highlighted the necessity of regularly reviewing training modules and emphasized the importance of collaboration and team support among trainees while delivering essential care to the elderly.

The 38th Caregiver Training participants are: Camille M. Reyes, Christiam Yakumbu, Chirstina Yakumbu, Evigan Sengebau, John Paul Buhat, Kim Patrick A. Pasca, Lolito E. Fidel, Maricor G. Duran, Masiam Yakumbu, Merilang Michael, Nelsie T. Fidel, Omisaol Senior, Secheriang J. Senior, Shirley E. Duff.



*Yoshifumi Horei, Satoshi Sasakura, Masatsugu Komiya, Junki Mori, Hiroki Takasaki, Shin Okamura, Mami Nonaka, Chiaki Imada, Benjamin Martin, and PCC President Patrick U. Tellei*

On June 2, 2025, nine experts with specializations in microorganisms, microalgae, aquaculture, energy, and hydroponics provided a briefing on initiatives related to JICA Deep Ocean Water: The Kumejima-Palau Model. The project is titled the Data Collection Survey on Ocean Thermal Energy Conversion (OTEC) and Kumejima Model Deployment in Island Countries in the Pacific Ocean. The project is operated by a Joint Survey Team consisting of Xenosys Inc., OECC Japan, IDEA Consultants Inc., GO Farm Inc., and Vege-Dream Inc. Their objective and background involve assessing the feasibility of implementing the Kumejima Model in an island nation and examining the establishment of a 1MW-class OTEC facility in Palau. This includes identifying potential suitable locations, proposing specific business models, and analyzing and evaluating economic factors.

## PCC MAINTENANCE & CTE STUDENTS CONSTRUCTING NEW SUMMER HOUSE



*PCC Maintenance and CTE students assisting in construction of Summer House*

On June 12, 2025, CTE Lab School students and PCC Maintenance worked together to pour concrete cement for the new 24' by 14' summer house at the National Track and Field and Dorm B to accommodate athletes for the upcoming 2025 Pacific Mini Games to be held on June 29th to July 9th.

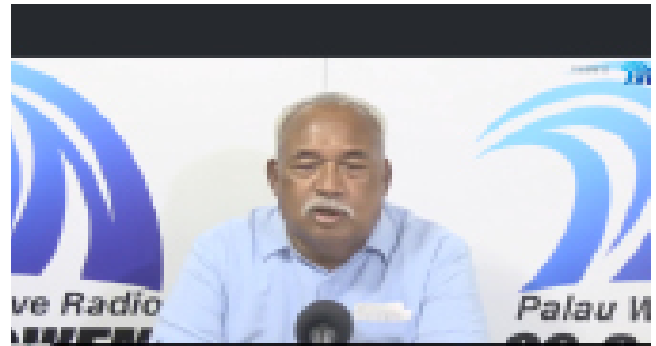
## PCC CTE STUDENT WORKERS CONSTRUCT A BED IN DORM B FOR PMG ATHLETES.



*CTE students and Maintenance constructing portable showers and assembling bunk beds*

On June 13, 2025, the CTE lab students have assigned to PCC Dorm B, where they are engaged in the task of assembling bunk beds for the PMG athletes. They have also been working tirelessly to paint interior walls, repair doors, and window. Panels for athletes from Kiribati and Federated States of Micronesia soon to arrive, late this week.

## PALAU WAVE RADIO TALKSHOW WITH PMG CHAIRMAN, PCC PRESIDENT DR. PATRICK U. TELLEI



*PCC President Dr. Patrick U. Tellei during PWFM Talkshow*

On June 12, 2025, Dr. Patrick U. Tellei, who serves as the Chairman of the Pacific Mini Games, appeared on a talk show to update the public regarding the upcoming games. In the course of the talk show, he discussed the accommodations for athletes and the locations where the sporting events will take place. He also pointed out that the Pacific Mini Games were initiated by the South Pacific Commission. Additionally, he shared a brief history of the games' origins and Palau's participation in the Pacific Mini Games.

## PMG PCC VILLAGE TEAM MEETING



*PCC PMG Village Team meeting in Conference room*

On June 9, 2025, PMG PCC Village Team's Mayor, Director Tchuzie Tadao conducted a meeting to address the roles and responsibilities for liaison officers, information booth volunteers, and volunteers as Pacific Mini Games nears.



# BITS AND PIECES...

## Tan Siu Lin PCC Library

### Hours of Operation

Monday to Thursday 7:30AM - 7:00 PM

Saturday 9:00 AM - 1:00 PM

Sunday & National Holidays CLOSED

For more information, call: 488-3540.

### AVAILABLE TO INTERESTED READERS: ECONOMIST



The Economist emphasizes the connection between politics and business. As a truly politically independent magazine, The Economist is intrepid in its approach to national and world news and has a reputation for insightful analysis and perspective. This delivers a straight-to-the-point periodical covering the most important events and news

### Academic Calendar

**June 20 (F)**  
**Last Day for All Withdrawals**

**June 24 (T)**  
**Last Day Instruction**

### News/Stories Wanted

Mesekiu's News welcomes stories/articles/announcements from students, faculty, and staff. Submission deadline is Wednesday at 4:30 p.m. in hard and/or electronic copies to [hherman@palau.edu](mailto:hherman@palau.edu). Articles from MOC/PCC Alumni are also welcome. Please call 488-2470/2471 (extensions 251 or 252) for more information.

Are you considering going back to school?

## Let's Talk Social Work!

Virtual Information Sessions about Master in Social Work (MSW) options @ UH Mānoa

**Program Highlights**

- Classes offered on-campus and online
- Variety of field education options
- Have a BSW? You could earn your MSW in 1 year!
- And much more!

Register at QR Code OR <https://go.hawaii.edu/aRz>

Questions? Contact us at [swhub@hawaii.edu](mailto:swhub@hawaii.edu)

UNIVERSITY OF HAWAII AT MANOA  
Department of Social Work  
THOMPSON SCHOOL  
SOCIAL WORK & PUBLIC HEALTH

**RPPL 8-27**  
**Prohibits Smoking Cigarettes on Public Property, including Palau Community College Campus.**

**RPPL 11-27**  
**Prohibits Purchasing, Possessing, or Consuming E-Cigarettes ANYWHERE in the Republic Of Palau.**

Violators of these Laws will be reported to Law Enforcement Authorities.

**NO SMOKING VAPING E-CIGARETTES**

### SUMMER SESSION 2025 (5 Weeks)

May 12-21 (M-TH)	Placement Testing
May 22 (TH)	New Student Orientation
May 26 (M)	First Day of Instruction
May 26-27 (M-TU)	Credit by Examination Period
May 26-27 (M-TU)	Drop/Add Period
May 26 (M)	Late Registration
May 28 (W)	Last Day to Change to AUDIT grading option
May 30 (F)	Last Day to remove Continuing Progress Grades for Fall 2024
June 1 (S)	Holiday: President's Day
June 2 (M)	Holiday: President's Day Observed
June 9-10 (M-TU)	Mid-Term Period
June 20 (F)	Last Day for All Withdrawals
June 24	Last Day of Instruction
June 25-27 (W-F)	Final Examination Period
July 4 (F)	Grades Due by 11:00 am
July 9 (W)	Holiday: Constitution Day
July 11 (F)	Last Day for Change of Grades
July 14 (M)	Registration for Fall 2025 begins

## PMG ANNOUNCEMENT

**PACIFIC MINI GAMES 2025 PALAU**  
*Empowering Unity*

## Be a Volunteer!

Make the Games Successful!

Scan Code To Register

The Pacific Mini Games 2025 Organizing Committee is recruiting interested volunteers to help ensure the success of the games this Summer! Scan the code to register now!

## VACANCY ANNOUNCEMENT

- (1) Instructor, Construction Technology  
Academic Affairs Division  
Salary range: \$16,010 - \$28,280 per annum
- (2) Instructor, Small Engine & Outboard Marine Tech.  
Academic Affairs Division  
Salary range: \$12,633.00 - \$22,349 per annum
- (3) Extension Agent (EFNEP Program)  
PCC Cooperative Research & Extension  
Salary range: \$11,010 - \$19,552 per annum
- (4) Instructor, Community & Public Health  
Academic Affairs Division  
Salary ranges: \$16,010 - \$28,280.00 per annum
- (5) Nursing Instructor  
Academic Affairs Division  
Salary range: \$16,010 - \$28,280 per annum
- (6) Administrative Assistant  
Upward Bound Program  
Salary range: \$12,001 - \$21,312 per annum
- (7) Accounting Technician (Payroll)  
Administration Department (Business Office)  
Salary ranges: \$13,081-\$23,230 per annum
- (8) Accounting Technician (Receivable)  
Administration Department (Business Department)  
Salary range: \$13,081-\$23,230 per annum
- (9) Financial Aid Counselor  
Student Services - Office of Financial Aid  
Salary range: \$12,049 - \$20,607 per annum

## VACANCY ANNOUNCEMENT

- (10) Two (2) Financial Aid Technicians  
Student Services - Office of Financial Aid  
Salary range: \$11,010 - \$19,552 (depending on qualifications and work experience) per annum
- (11) Two (2) Library Assistant  
Tan Siu Lin PCC Library  
Salary range: \$7,800 - \$13,852 (depending on qualifications and work experience) per annum
- (12) Data Service Technician  
Institutional Research & Evaluation Office  
Salary range: \$10,000 - \$17,938 (depending on qualifications and work experience) per annum

For application forms and information, contact Harline Haruo at the PCC Human Resources Office at 488-2470/2471 extension 227, or e-mail: [hr@palau.edu](mailto:hr@palau.edu), or download forms at <http://pcc.palau.edu>.

**"PCC is an Equal Opportunity Employer."**

## **PCC Endowment**

**INVEST IN THE FUTURE  
To SUPPORT,  
CONTACT US TODAY!**

P.O. BOX 9 Koror,  
Palau 96940

Phone: 488-2470/2471 (ext. 251/252)

e-mail: [tellei@palau.edu](mailto:tellei@palau.edu)

If you want to join the Bi-Weekly Allotment Program, contact us NOW!

## Celebrating Birthday

June 16 - 22 2025



Dickxon Noel



Christopher Kitalong

## **ALUMNI NOTES**

**IBBUCH A. KUMAICHI**

**COMMUNITY AND PUBLIC HEALTH**



Ms. Ibuuch Kumaichi graduated with her AS in Community and Public Health. She is employed at Palau Red Cross Society.

Interested in Learning Transferable Media and Marketing skills? Volunteer with the PCC Development Office. Stop by at the Dort building to sign-up.



**Please Hire PCC Graduates!**



*Mesekiu's News*

Palau Community College

**ALUMNI** showcases MOC & PCC alumni who are positive role models and contribute to the quality of life in their local communities.

If you are that Alumna/Alumnus or know someone who is, please contact the PCC Development Office at telephone numbers 488-2470/2471 (extensions 251 or 252).

We would like to feature you in future *Mesekiu's News* issues.

stamp here