

# MESEKIU'S NEWS

**FREE!**

**Campus Buzz: Free Weekly Newsletter**

VOLUME 27, ISSUE 40



## CELEBRATING STUDENT LEADERSHIP: SWEARING-IN CEREMONY AT PALAU COMMUNITY COLLEGE



PCC BOARD OF TRUSTEES JOINING PRESIDENT DR. TELLEI AND DEAN HILDA FOR A GROUP PHOTO WITH THE NEWLY ELECTED STUDENT TRUSTEE AND ASPCC OFFICERS AND SENATORS

On September 29, 2025, Palau Community College proudly hosted a swearing-in ceremony for the Associated Students of Palau Community College (ASPCC) and their newly appointed Student Trustee. The event took place at the PCC Assembly Hall at 12 PM, marking a significant moment for the college.

Ms. Romana Wong, the Acting Chairperson of PCC's Board of Trustees, administered the oath of office to the new Student Trustee. Among the attendees were board members Ms. Alvina Timarong and Mr. Leoben Teriong, as well as PCC President Dr. Patrick U. Tellei, who officiated the oath-taking for the

ASPCC officers and senators. The ceremony drew a supportive crowd of faculty, students, parents, family members, and friends of the inductees, all gathered to celebrate this milestone.

We extend our heartfelt congratulations to the newly elected Student Trustee. Ms. Kara E. Rechelulk will represent the student body on PCC's Board of Trustees. We also congratulate and recognize the ASPCC Officers: President Righteous B. Adaba, President-Elect Paula Sadang, Secretary Stanislaus Tellei, and Treasurer Jomil Garcia. They are joined by seven senators, including RMISO President Romila Gold,

### STUDENT LEADERSHIP



STUDENT TRUSTEE MS. KARA E. RECHELULK



ASPCC PRESIDENT  
MR. RIGHTEOUS B. ADABA

RPSO President Leleng Blailes, YSO President Evlin Kinian, as well as Freshman Representatives Garner Esebei and Leis-Te'Andra Ilek, and Sophomore Representatives Aurnyn Benhart and Mitoko Charles.

This ceremony not only signifies the commitment of our student leaders but also represents a bright future for Palau Community College. We look forward to their contributions and the positive impact they will have on our college community. Congratulations to all who participated in this momentous occasion!

*Congratulations!*



## Learning by Doing: Emmaus Bethania High School's Lab & Field Day with PCC-CRE

Article contributed by: Ms. Emengel Singich, Senior Research Assistant



On September 18, 2025, PCC-Cooperative Research & Extension (CRE) welcomed sophomore students from Emmaus Bethania High School to the Research and Development Station at Ngermeskang, Ngeremlengui State.

The visit began with a tour of the tissue culture laboratory, where students not only observed ongoing work but also participated in several hands-on activities. They prepared taro plantlets for acclimatization in the nursery, assisted in preparing

sterile paper for use in the culture rooms, and dismantled an overgrown pineapple to collect crowns for planting in the nursery and lab. These activities provided students with first-hand experience in the practical steps of agricultural research and plant propagation.

After their lab work, the group toured CRE's facilities and research plots, learning about ongoing projects that support Palau's food security and resilience. The visit concluded with a walk through the grounds and a

refreshing dip in the river near the *mesei* (taro patch), creating a memorable connection between cultural heritage, science, and the environment.

Throughout the day, students engaged enthusiastically, asking questions, trying new techniques, and making connections between classroom knowledge and real-world applications. The visit underscored the importance of exposing youth to agricultural research while inspiring the next generation to value sustainability and cultural traditions.



### Annual Fire Safety Report for 2024

#### PCC Security Services

PCC has a Security Unit comprised of one security supervisor and four (4) security officers. These personnel provide security services to PCC properties and personnel and students, including PCC patrons during their working hours. The Security Unit is within the Physical Plant division of the College under the Administration & Finance department.

**Working Relationship of PCC Security Unit with Local Law enforcement Agencies**  
PCC Security Unit, under the Administration & Finance Department of PCC, works closely with the Bureau of Public Safety (BPS) of the Palau Ministry of Justice (MOJ) during incidents, including fires, that occur within the PCC premises, or involve PCC properties, students, and personnel.

#### Statement of Policy Encouraging Accurate and Prompt Reporting of Fires

It is the policy of Palau Community College to encourage accurate and prompt reporting of any and all fires to campus security personnel, appropriate College officials, as well as to the Bureau of Public Safety. As such, PCC has in place Incident Forms that help individuals (personnel, students, patrons) to write/describe fire incidents to which they are a witness.

#### Fire Safety Report for On-Campus Housing

Fire Statistics gathered by Palau Community College required to be reported for the years 2022, 2023, and 2024 are now complete.

#### Fires – On-campus Student Housing Facilities:


Year	2022	2023	2024
# Fires	0	0	0

#### Fires on On-campus Student Housing Facility for 2024

Incident	Fire-related Injuries	Fire-related Deaths
# 0	0	0

#### Fires – Summary

Year	Fires	Injuries	Deaths	Fires	Injuries	Deaths	Fires	Injuries	Deaths
2022	0	0	0	2023	0	0	2024	0	0
Dorm A	0	0	0	Dorm A	0	0	Dorm A	0	0
Dorm B	0	0	0	Dorm B	0	0	Dorm B	0	0
Dorm C	0	0	0	Dorm C	0	0	Dorm C	0	0

  
Jay Olegieril  
Vice President for  
Administration & Finance

9/29/25  
Date

### Annual Security & Fire Safety Report for 2024

#### PCC Security Services

PCC has a Security Unit comprised of one security supervisor and several security officers. These personnel provide security services to PCC properties and personnel and students, including PCC patrons during their working hours. The Security Unit is within the Physical Plant division of the College under the Administration & Finance department.

**Working Relationship of PCC Security Unit with Local Law enforcement Agencies**  
PCC Security Unit, under the Administration & Finance Department of PCC, works closely with the Bureau of Public Safety (BPS) of the Palau Ministry of Justice (MOJ) during incidents that occur within the PCC premises, or involve PCC properties, students, and personnel. There is no written agreement or Memoranda of Understanding (MOU) between the PCC and MOJ for the investigation of alleged criminal offenses.

#### Statement of Policy Encouraging Accurate and Prompt Reporting of Crimes

It is the policy of Palau Community College to encourage accurate and prompt reporting of any and all crimes to campus security personnel as well as to the Bureau of Public Safety. As such, PCC has in place Incident Forms that help individuals (personnel, students, patrons) to write/describe incidents that they are involved in or to which they are a witness.

#### Crime Statistics for 2024, 2023, and 2022

Crime Statistics gathered by Palau Community College required to be reported for the years 2022, 2023, and 2024 are now complete.

#### Fire Safety Report for On-Campus Housing

Fire Statistics gathered by Palau Community College required to be reported for the years 2022, 2023, and 2024 are now complete.

#### Notice of Availability of Report

The 2024 Annual Fire Safety and Security Survey Report for Palau Community College is available in the Office of the Vice President for Administration & Finance. The report provides number of occurrences of crimes or fires, if any, during the reporting period. To request a paper copy of the Report, please contact the Vice President for Administration & Finance at PCC telephone number (680) 488-2471, extension 263. Once the PCC data have been submitted and reviewed, the general public may view them at <http://oape.ed.gov/campusafety>.

  
Jay Olegieril  
Vice President for  
Administration & Finance

9/29/25  
Date

### Annual Fire Safety Report for 2024

#### Fire Safety Report for On-Campus Housing

Fire Statistics gathered by Palau Community College required to be reported for the years 2022, 2023, and 2024 are now complete.

#### Notice of Availability of Report

The 2024 Annual Fire Safety Report for Palau Community College is available in the Office of the Vice President for Administration & Finance. The report provides number of occurrences of fires, if any, during the reporting period. To request a paper copy of the Report, please contact the Vice President for Administration & Finance at PCC telephone number (680) 488-2471, extension 263. Once the PCC data have been reviewed, the general public may view them at <http://oape.ed.gov/campusafety>.

  
Jay Olegieril  
Vice President for  
Administration & Finance

9/29/25  
Date





## BITS AND PIECES

### TAN SIU LIN PCC LIBRARY

#### Hours of Operation

Monday to Thursday  
7:30 AM to 7:00 PM

Friday  
8:00 AM to 5:00 PM

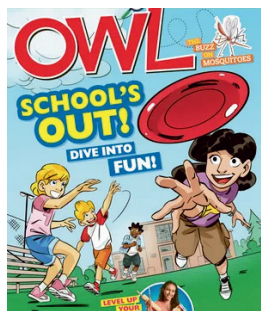
Saturday  
9:00 AM to 1:00 PM

\*Closed on Sundays and National Holidays

For more information, call:  
488-3540

#### Available To Interested Readers:

OWL



Hey readers,  
Are you ready to zip into summer? It's almost here, we can feel it! So much so that we're sending the end of the school year out in style. Get ready to bring your a-game to the park this summer with facts about Frisbee. Then get tips on how to do things on your own..

All this and more awaits you in the June issue. So pick up a copy and get reading!

### ACADEMIC CALENDAR

October 6-10 (M-F)  
MID-TERM PERIOD

### PCC Donates Books to Koror Jail



PCC DEVELOPMENT OFFICE DIRECTOR KATE OIPH (ON THE LEFT) ALONGSIDE DIVISION OF CORRECTION OFFICERS AS THEY ACCEPT A DONATION

On September 19, 2025, the Office of the President of Palau Community College made a generous donation of several books and magazines to the Koror Jail.

PCC President Dr. Tellei has been committed to donating reading materials over the years, with the intention of providing inmates the opportunity to engage with literature.

Mesekiu's News welcomes stories/articles/announcements from students, faculty, and staff. Submission deadline is Wednesday at 4:30 p.m. in hard and/or electronic copies to [pccdev@palau.edu](mailto:pccdev@palau.edu). Articles from MOC/PCC Alumni are also welcome. Please call 488-2470/2471 (extensions 251 or 252) for more information.

**HAPPY 31ST INDEPENDENCE DAY,  
PALAU, CONGRATULATIONS ON THE  
25TH OLECHOTEL BELAU FAIR AND  
32<sup>ND</sup> MECHECIL BELAU CONFERENCE!  
BEST WISHES FROM PALAU  
COMMUNITY COLLEGE.**

2025-2026 PCC BASED SCHOLARSHIP  
**CLOSED**  
APPLY NOW!

## Vacancy Announcement

**(1) Two (2) Positions Library**

Assistant,

Tan Siu Lin PCC Library

Salary Range: \$7,800 - \$13,852 per annum

**(2) Federal Work Study Coordinator**  
Student Services Division - Office of Financial Aid

Salary Range: \$16,010 - \$28,280 per annum

**(3) Administrative Assistant,**  
Student Services Division - Dorm

Salary Range: \$12,001 - \$21,312 per annum

**(4) Accounting Technician (Payroll),**  
Administration & Finance

Department - Business Office

Salary Range: \$13,081 - \$23,230 per annum

**(5) Financial Aid Counselor,**  
Student Services - Office of Financial Aid

Salary Range: \$12,049 - \$20,607 per annum

**(6) Administrative Assistant,**  
PCC Adult High School

Salary Range: \$10,929- \$18,692 per annum

**(7) Dean of Academic Affairs,**  
Academic Affairs

Salary Range: \$21,911 - \$38,911 per annum

**(8) Academic Counselor/Advisor,**  
Upward Bound Math & Science Program

Salary Range: \$19,000 - \$21,312 per annum

**(9) Instructor, English**  
PCC Education and Training Department

(Academic Affairs Division)

Salary Range: \$16,010 - \$28,280 per annum

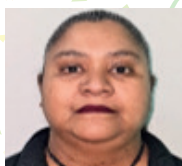
For more vacancies and to apply, please visit:

<https://pcc.palau.edu/about/jobs-pcc/>

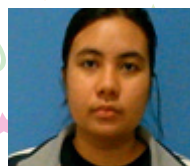
*"PCC is an Equal Opportunity Employer."*

## Celebrating Birthday

Oct 1 - Oct 9, 2025



**Leilanie  
Miko**



**Maria A. G.  
Rangel**



**Miano  
Sowraenpiy**



**Ariel F.  
Bacero**

## ALUMNI NOTES

Kishia K. Ketebengang



Kishia K. Ketebengang completed her Associate in Science degree in Information Technology in Spring 2025. She is now pursuing her Bachelors Degree in I.T Management at Eastern Oregon University. Congratulations and wishing her the best in her academic journey!

## PCC ENDOWMENT

**INVEST IN THE FUTURE  
TO SUPPORT,  
CONTACT US TODAY!**

P.O.BOX 9

KOROR, PALAU 96940

Phone: 488-2470/2471

(Ext. 251/252)

e-mail: [tellei@palau.edu](mailto:tellei@palau.edu)

If you want to join the Bi-Weekly Allotment Program, **Contact Us Now!**

Interested in learning transferrable media and marketing skills? Volunteer with the PCC Development Office. Stop by at the Dort building to sign-up.



**Please Hire PCC  
Graduates!**

**Basic Conversational  
Palauan Classes  
available through  
PCC Continuing Education  
Office!**

**For more information,  
please contact us at:  
Phone: 488-2470 Ext 243 or  
488-6223**

**Email: [ce@palau.edu](mailto:ce@palau.edu)**