

# MESEKIU'S NEWS

**FREE!**

**Campus Buzz: Free Weekly Newsletter**

VOLUME 27, ISSUE 50



## PALAU COMMUNITY COLLEGE MARKS 40TH CAREGIVERS GRADUATION: FOCUSES ON NEW STEP-DOWN FACILITY STAFF



(FRONT ROW LEFT-RIGHT) PCC PRESIDENT DR. TELLEI, ACTING DIRECTOR HERA SUBEDIANG OF THE BUREAU OF HUMAN SERVICES, DR. DEVER, DR. OSARCH, VICE PRESIDENT AND MINISTER OF MHHS RAYNOLD OILOUCH, HOME HEALTH NURSE VANESSA ESPANGEL, AND PHYSICAL THERAPIST JASON NOLAN. (BACK ROW) TRAINING PARTICIPANTS ALONGSIDE DR. LOUISA SANTOS (CENTER)

On December 11, 2025, Palau Community College (PCC) Continuing Education, in collaboration with the Palau Area Health Education Center (AHEC), hosted the 40th Caregivers Training Awarding Ceremony at the PCC Assembly Hall. This milestone event focused on providing specialized training for staff members who will support the elderly and vulnerable population at the new transition facility at the Belau National Hospital.

The ceremony was graced with the presence of notable speakers, including PCC President Dr. Tellei

and Dr. Gregory Dever, who commended the achievements of the training participants. Dr. Osarch took the opportunity to stress the importance of regularly reviewing training modules and fostering teamwork and support among trainees in delivering exceptional care to the clients they serve at the facility.

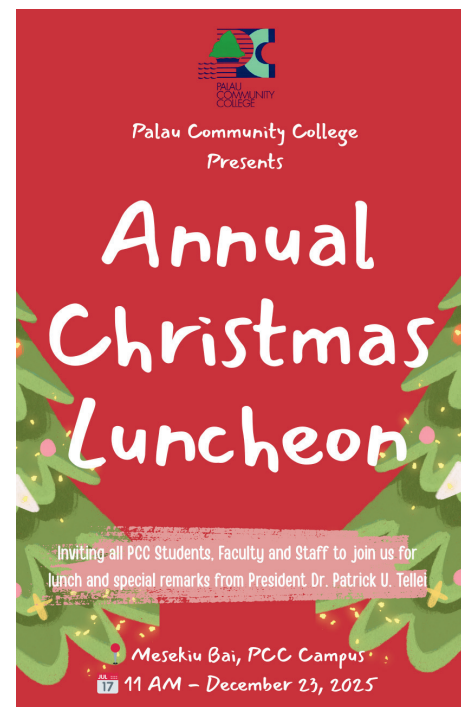
Vice President and Minister of Health and Human Services Raynold Oilouch also attended, offering motivating remarks to encourage the participants to continue their crucial work in the health sector.

*CAREGIVER CONTINUED ON PAGE 3*

## UPCOMING CAMPUS EVENT

Alii and Season's Greetings, PCC Employees!

We are excited to announce that PCC President Dr. Tellei warmly invites all members of our College family to join us for the Annual Christmas Luncheon. This festive gathering is scheduled for Tuesday, December 23rd, at the PCC Mesekiu Bai-Courtyard, located right in the heart of campus. Let's come together as a PCC family to celebrate the holiday season and the transition into the new year.



## Faculty Senate Association Retreat: Stewardship in the Rock Islands

*Article contributed by: Kleinton Rivera, FSA Secretary & Information & Tech. Instructor*



FSA MEMBERS WHICH CONSISTS OF PCC ASSOCIATE PROFESSORS AND INSTRUCTORS ALONG WITH FAMILY AND FRIENDS

The Faculty Senate Association recently concluded a successful retreat amidst the breathtaking scenery of the Rock Islands, blending strategic relaxation with a spontaneous display of environmental stewardship.

The retreat, designed to foster collaboration and camaraderie for the upcoming term, took the faculty, along with guests, out of the classroom and into the heart of the Palau's natural beauty. A highlight of the retreat was the visit to Metukruikull, the designated Palau Community College (PCC) Rock Island.

While the primary goal was professional development and team building, the faculty demonstrated that their commitment to the community extends beyond the campus borders. During a brief intermission while the transport boat was refueling at Metukruikull, the group sprang into action.

Instead of simply waiting, the faculty members organized an impromptu

clean-up drive along the shoreline. In just a short window of time, they scoured the beach for debris, leaving the pristine sands of the PCC island even cleaner than they found them.

"It wasn't on the itinerary, but it felt like the natural thing to do," remarked one of the faculty members. "Visiting Metukruikull reminds us of the resources entrusted to us, and taking care of this island is a small way to show our appreciation."

The retreat concluded with renewed energy for the next semester ahead, serving as a reminder that leadership involves both high-level planning and hands-on service.



FSA MEMBERS PARTICIPATING IN THE BEACH CLEANUP

CAREGIVER CONTINUED FROM PAGE 1

The graduates of the 40th Caregiver Training program included:

Cristy Mendoza, Ismei Oilouch, Karma Sbal, Jenielyn Leonardo, Noeme Salinas, Sera Caginikaibau, Kim Pasca, Ruby Catapang, Merry Chris Marave, Gina De Guzman, and Zenophia Debelbot.

This successful training program underscores the commitment of PCC and AHEC to equipping caregivers with the necessary skills to provide high-quality support to those in need. As they step into their roles, these new caregivers are prepared to make significant contributions to the health and well-being of the community.



VICE PRESIDENT AND MINISTER OF HEALTH AND HUMAN SERVICES, RAYNOLD OILOUCH, ADDRESSES THE TRAINING PARTICIPANTS DURING THE AWARDING CEREMONY



SYLVIA OSARCH, A LEAD INSTRUCTOR, DELIVERS A SUMMARY SPEECH DURING THE CEREMONY

## BITS AND PIECES

### TAN SIU LIN PCC LIBRARY

#### Hours of Operation

Monday to Friday  
8:00 AM to 5:00 PM

Christmas/New Year's Day  
Closed

Saturday  
Closed During Intercession

\*Closed on Sundays and National  
Holidays

For more information, call:  
488-3540

#### Available To Interested

##### Readers:

##### Techniques



Techniques is a monthly trade magazine that focuses on the field of Career and Technical Education (CTE). It provides content to professionals working in this sector, including educators, administrators, and policymakers.

### ACADEMIC CALENDAR

**DECEMBER 15 - 23 (M-T)**  
**PLACEMENT TESTING FOR SPRING 2026**

**DECEMBER 30 (T)**  
**LAST DAY TO REMOVE CONTINUING  
PROGRESS GRADES FOR SUMMER 2025**

### PALAU COMMUNITY COLLEGE UPCOMING EVENTS



**End of the Year Get Together  
December 19, 2025**

**PCC Christmas Luncheon / Holiday  
Wreath Contest Winner Announced  
December 23, 2025**

**HOLIDAY  
WREATH CONTEST**  
CALLING ALL PCC DEPARTMENTS,  
DIVISIONS, AND OFFICES!



#### IMPORTANT DATES

- Submission Deadline: **Dec. 17, 2025**
- Online Voting Opens: **Dec. 18, 2025**
- Voting Platform: **PCC's Facebook Page**
- Winners announced: **During our Annual Christmas Luncheon**

#### SPREAD THE HOLIDAY CHEER!

Bring your creativity, teamwork, and festive spirit. Let's make this a fun, friendly, and joyful competition!

## NOTICE TO ALLOTTERS AND DONORS

THE DEVELOPMENT OFFICE OF PALAU COMMUNITY COLLEGE IS PLEASED TO ANNOUNCE THAT, EFFECTIVE DECEMBER 30, 2025, WE WILL COMMENCE ASSISTING AND ISSUING RECEIPTS TO ALL DONORS, INCLUDING THOSE WHO CONTRIBUTE ON A BI-WEEKLY BASIS.

WE EXTEND OUR SINCERE GRATITUDE FOR YOUR ONGOING SUPPORT AND DEDICATION TO OUR COLLEGE ENDOWMENT FUND.

*Season's Greetings*

Interested in learning transferrable media and marketing skills? Volunteer with the PCC Development Office. Stop by at the Dort building to sign-up.

**Please Hire PCC  
Graduates!**

## Celebrating Birthday Dec 19 - Dec 25, 2025



**Adam  
Sarofaireg**



**Kristy  
Olkeriil**

## ALUMNI NOTES

Meg S. Watanabe



Meg S. Watanabe proudly earned her Associate of Science degree in Education, specializing in Early Childhood, in the Spring of 2025. She currently serves as a teacher at Airai Elementary School. We congratulate her and wish her ongoing success in her professional path, acknowledging the essential role she plays in shaping the future of Palau. Additionally, she is an accomplished Table Tennis athlete, having competed in the Belau Games and the 2023 Pacific Games in Solomon.

## Spring 2026 Enrollment Info

Important dates for new, continuing and returning students

Enroll now at PCC Admission Office

November 24, 2025 – First day of registration for Spring 2026

January 5, 2026 – New Student Orientation

January 9, 2026 – Late Registration

January 12, 2026 – First day of instruction

(680) 488-2470/2471  
P.O.Box 09, Koror, Palau 96940  
Email us at: [registrar@palau.edu](mailto:registrar@palau.edu)  
Website: [pcc.palau.edu](http://pcc.palau.edu)

## PCC ENDOWMENT

**INVEST IN THE FUTURE  
TO SUPPORT,  
CONTACT US TODAY!**

P.O.BOX 9  
KOROR, PALAU 96940  
Phone: 488-2470/2471  
(Ext. 251/252)  
e-mail: [tellei@palau.edu](mailto:tellei@palau.edu)

*If you want to join the Bi-Weekly Allotment Program, **Contact Us Now!***



Mesekiu's News welcomes stories/articles/announcements from students, faculty, and staff. Submission deadline is Wednesday at 4:30 p.m. in hard and/or electronic copies to [pccdev@palau.edu](mailto:pccdev@palau.edu)

Articles from MOC/PCC Alumni are also welcome. Please call 488-2470/2471 (extensions 251 or 252) for more information.