

MESEKIU'S NEWS

FREE!



Campus Buzz: Free Weekly Newsletter

VOLUME 28, ISSUE 19



PALAU COMMUNITY COLLEGE HOLDS FINANCIAL TRAINING ON QUICKBOOKS PROGRAM



APRIL 17, 2026: PCC FACULTY, GOVERNMENT OFFICIALS AND GRADUATES OF THE FIRST QUICKBOOKS TRAINING MODULE COHORT

On April 17 and May 1, 2026, Palau Community College (PCC) proudly celebrated the graduation of participants who completed "QuickBook Training Modules," a comprehensive 20-hour training program designed to standardize financial reporting across Palau. This initiative is essential for enhancing fiscal management and ensuring audit readiness among state governments.

The ceremonies began with an inspiring welcome address from PCC President Dr. Patrick U. Tellei, who emphasized the importance of financial transparency and accountability in the public sector. He praised the participants for their dedication to strengthening fiscal practices within their communities. Officials from the Bureau of Domestic Affairs and the Office of

the Public Auditor highlighted the program's objectives, noting its critical role in improving the reliability of financial records and assisting state governments in effectively managing public funds. This training represents a crucial step in establishing a cohesive financial framework across Palau's government entities.

The curriculum, expertly delivered by lead instructor Jamie R. Ande, unfolded over five days, each focused on specific aspects of financial management using QuickBooks Desktop 2024.

Day 1 (The Foundation): This initial day emphasized the "Big Picture," covering the accounting cycle, the

QUICKBOOKS CONTINUED ON PAGE 2

COMMUNITY HIGHLIGHT



SPRING 2026 PICKLEBALL INTRAMURAL TOURNAMENT PLAYERS

The courts at Palau Community College (PCC) were buzzing with energy this season as the Spring 2026 Pickleball Intramural Tournament officially drew to a close. Organized by the PCC Recreation Office in partnership with Palau Pickleball, the event was a vibrant display of athleticism, strategy, and campus spirit.

After weeks of intense games and strategic plays, the leaderboard has been finalized. Here is the final ranking for the Intramural Tournament:

Champions – Team Likiaklik
2nd Place – Team Ulai
3rd Place – Team Mitoko
4th Place – Team Rox

While the competitive fire was high, the tournament served a much larger purpose: fostering unity and teamwork across the PCC campus.

HIGHLIGHT CONTINUED ON PAGE 2



MAY 01, 2026: PCC FACULTY, GOVERNMENT OFFICIALS AND GRADUATES OF THE SECOND QUICKBOOKS TRAINING MODULE COHORT

QUICKBOOKS CONTINUED FROM PAGE 1

Governor's expectations, the 6 Pillars Framework, common audit findings, and the basics of debits and credits.

Day 2 (Setup & Revenue): Participants learned to build a solid financial base, focusing on QuickBooks navigation, Chart of Accounts (COA) setup, user/list configurations, budget creation, and processing sales receipts and deposits.

Day 3 (Expenditure): This day concentrated on managing outgoing funds, including processing purchase orders, paying bills, and understanding the Accounts Payable Workflow (APV).

Day 4 (Reconciliation, Errors & Adjusting Entries): Recognized as a critical control point, participants tackled bank reconciliations, error corrections, and adjusting entries.

Day 5 (Reports, Readiness & Closing): The final day emphasized audit readiness, analyzing key financial reports such as Profit & Loss vs. Budget and the Balance Sheet, culminating in an overall assessment of participants' learning.

A significant theme emphasized throughout the program was that true audit readiness relies on the

strength of the foundation built early in the training. A critical technical requirement discussed was the necessity for the budget to connect directly to the COA structure to ensure cohesive reporting.

By the end of the program, participants achieved several key outputs, including a clear understanding of the rationale behind financial foundations, a ready-to-use QuickBooks file with daily revenue and expense entries, a functional spending plan and verified cash position through reconciliation, and clean, accurate data supporting financial reports and audit evidence. These accomplishments culminated in the awarding of certificates, recognizing their readiness to enhance fiscal management in their respective states.

HIGHLIGHT CONTINUED FROM PAGE 1

From the first serve of the season to the final championship point, the atmosphere was defined by high energy and mutual respect. Every rally, every match, and every team effort made this event a success. This tournament showcased not only competitive spirit but also the unity and energy of our campus community. Thank you to all players, captains, and supporters!

Palau Community College Congratulates Graduates of the 41st Caregiver Training Cycle



ATTENDEES AND RECIPIENTS OF THE CAREGIVER TRAINING PICTURED @ PCC ASSEMBLY HALL FOR AWARDING

On April 29, 2026, Palau Community College (PCC) proudly hosted a ceremony to honor the graduates of the 41st Caregiver Training Cycle. This event recognized the dedication and commitment of individuals who successfully completed the rigorous 20-hour course, aimed at addressing the growing need for skilled caregivers in our community.

PCC Vice President of Admin & Finance Jay Olegeriil opened the ceremony, welcoming attendees and emphasizing the important role caregivers play in assisting the well-being of others. He shared personal insights from his involvement with Palau's National Disability Committee, highlighting the significance of this training program and the importance of more certified caregivers.

Dr. Gregory Dever, Director of the Palau Area Health Education Center (AHEC), provided a historical overview of the caregiver program, detailing the fruitful partnership between AHEC and PCC that has flourished since 2002. Lead instructor Dr. Sylvia Osarch, along with her

CAREGIVER CONTINUED ON PAGE 3

BITS AND PIECES

TAN SIU LIN PCC LIBRARY

Hours of Operation

TEMPORARY HOURS
MAY 06 - JUNE 05, 2026

Monday - Friday
8:00 AM - 5:00 PM

Closed On Weekends

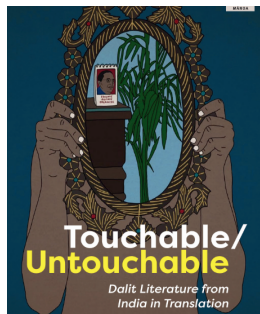
*Closed on National Holidays

For more information, call:
488-3540

Available To Interested

Readers:

MANOA: A PACIFIC JOURNAL OF INTERNATIONAL WRITING



MĀNOA is a unique, award-winning literary journal that includes American and international fiction, poetry, artwork, and essays of current cultural or literary interest. An outstanding feature of each issue is original translations of contemporary work from Asian and Pacific nations, selected for each issue by a special guest editor. Beautifully produced, MĀNOA presents traditional alongside contemporary writings from the entire Pacific Rim, one of the world's most dynamic literary regions.

ACADEMIC CALENDAR

MAY 15 (F)
COMMENCEMENT EXERCISES

MAY 15 (F)
LAST DAY FOR CHANGE OF GRADES

CAREGIVER CONTINUED FROM PAGE 2

dedicated team, presented a summary of the comprehensive curriculum that included essential topics such as aging, dementia, physical therapy, specialized care, and caregiver burnout.

Josiah Paguio, representing the graduates, delivered an inspiring speech that highlighted the nobility of the caregiving profession. He expressed that although caregiving may appear straightforward, it demands profound dedication to serving others with dignity and respect.

The ceremony culminated in the conferral of certificates to the newly

certified caregivers, celebrating their achievements and readiness to make a positive impact on elder and disability care within the community. PCC Continuing Education Dean Kual closed the event by discussing the program's promising future and the ongoing demand for caregiver training, encouraging prospective students to enroll in the next cycle.

As the evening came to a close, group photos captured the joyous celebration of achievements, with these new caregivers ready to make a difference in homes across Palau.



ATTENTION
GRADUATING PCC STUDENTS
Class of 2026

For those who choose to participate in PCC's 63rd Commencement Exercises, we will have a very important meeting on

Friday, May 08, 2026, from 1:00 p.m. - 2:00 p.m. at the PCC Assembly Hall

Light snacks will be provided.

If you have any questions, please contact Volette Polloi at volettep@palau.edu or Director Cecil Meteolechol at cecilm@palau.edu

Announcement

THE PALAU BEHAVIORAL HEALTH ADVISORY COUNCIL (PBHAC) IS CONDUCTING AN IMPORTANT SURVEY ON SUBSTANCE USE. JOIN US ON THE 1ST FLOOR OF THE EWATEL BUILDING (NEXT TO CE AND ACROSS MIDTOWN MOBILE GAS STATION) TO SHARE YOUR THOUGHTS AND INSIGHTS.

AS A THANK YOU, EVERYONE WHO COMPLETES THE SURVEY WILL RECEIVE VOUCHERS FOR GAS OR FOOD! DON'T MISS OUT ON THIS OPPORTUNITY TO MAKE YOUR VOICE HEARD AND GET REWARDED!



Interested in learning transferrable media and marketing skills? Volunteer with the PCC Dvelopment Office. Stop by at the Dort building to sign-up.

Celebrating Birthdays

May 08 - May 14, 2026



ALUMNI NOTES

Uldekel A. Ililau



Uldekel A. Ililau earned her Associate of Science degree in Community and Public Health in the Spring of 2025. We extend our heartfelt congratulations to her and wish her continued success in her career.

Please Hire PCC Graduates!

PCC ENDOWMENT

**INVEST IN THE FUTURE
TO SUPPORT,
CONTACT US TODAY!**

P.O.BOX 9
KOROR, PALAU 96940
Phone: 488-2470/2471
(Ext. 251/252)
e-mail: tellei@palau.edu
or pccdev@palau.edu

*If you want to join the Bi-Weekly Allotment Program, **Contact Us Now!***



Mesekiu's News welcomes stories/articles/announcements from students, faculty, and staff. Submission deadline is Wednesday at 4:30 p.m. in hard and/or electronic copies to pccdev@palau.edu

Articles from MOC/PCC Alumni are also welcome. Please call 488-2470/2471 (extensions 251 or 252) for more information.

FABRIC DESIGN COURSE

for Beginners & Intermediate

May 18th - June 4th 2026
(Monday - Thursday)

5:30 PM - 7:30 PM

Chibokill Training Room
Palau Community College

*Sewing machine required

- Build your confidence with using a sewing machine
- Learn how to design, measure, cut and sew garments
- Upcycle old garments to make new garments

Contact us for more information:

Continuing Education
Palau Community College

(680) 488-6223 or
(680) 488-2471 ext. 243

email us:
ce@palau.edu