

Alumni Notes

Class of 1972 (MOC)

Marcus Basiou



Earned his Vocational Certificate of Achievement (VOC) in Welding. Three days after graduating, he got hired to be a ship repair welder at Peleliu until 1975. In 1976-1980 he worked at Mariculture. In 1980-1989 he was at Public Work working in the Sewer Department. He

then moved to Saipan in 1989 where he worked at the Commonwealth Utility Corporation in the Sewer Department until his retirement in 2005. *Message: Taking classes has proven beneficial for me; It can be the same for you.*

Class of 1989 (MOC) & 2005 (PCC)

Ann Sabra Ngirarorou

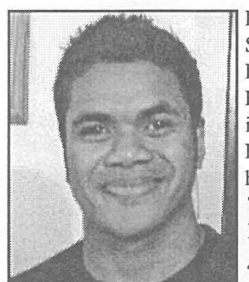


Earned her Certificate of Achievement (CA) in General Office Clerk and Air Conditioning & Refrigeration. Worked as an office clerk from 1982-1987 at PCC in the Admissions & Records. Returned in 1990 to work at PCC in the Counseling Office as a

Secretary then transferred to Maintenance where she has been the secretary from 2000 until present. *Message: It's never too late to learn regardless of age.*

Class of 2011

Kalahary Arbedul



Earned his Associate of Science (AS) degree in Business Administration. He reapplied for Fall 2011 into the Nursing program. In December, he was hired as the Information Technology Assistant at PPUC. *Message: Don't give up your dreams & goals. Stay in school because education is the key to your success and for you to achieve your dream and succeed in your future.*

Alumni Notes showcases MOC & PCC alumni who are positive role models and contribute to the quality of life in their local communities. If you are that alumnus/alumna or know someone who is, please contact the PCC Development Office at telephone number 488-2471. We would like to feature you in future issues of the *Mesekiu's News*.

Mesekiu's News
Palau Community College
P.O. Box 9, Koror, Palau 96940

Recognition cont'd from p.1

Grace Salvador, Franson Oiterong & Kazue Melphy. Thank you for your years of service. There was a special surprise for

all employees. A free 10 minute massage was provided from professional masseuse. What a way to end the year!

Tournament cont'd from p.3

Billiard (Co-Ed)

1st - Pius Perogolo & Lisa Sulog

2nd - Benjamin Numaw

& Berica Laamow

3rd - Joseph Mangarfir

& Cari Gadjusek



Outer Kids I with Meda team members in a photo op.

PALAU BEACH BUNGALOWS

Peace & Relaxation Palauan Style!

Only \$40+tax daily rate

Private a/c bedroom & bath, living room, kitchenette

Beachside on big island of Babeldaob

Melekeok State

30 minutes from Palau International Airport

RESERVATIONS: 680.587.2533

Swim, snorkel, jungle walks, cultural sites

palaubeachbungalows@palaunet.com

www.palauparadise.com

Celebrating Birthdays

Siliang Michael	Jan 11
Willy Wally	Jan 11
Harline Haruo	Jan 15
Suzette Hinojales	Jan 15

Happy Birthday To You!

Vacancy Announcement

- (1) English Instructor, Learning Resource Center
Salary range: \$14,802 - \$24,647 per annum
- (2) Math Instructor, Learning Resource Center
Salary range: \$14,802 - \$24,647 per annum
- (3) Financial Aid Counselor, Adm. & Financial Aid
Salary range: \$12,049 - \$20,607 per annum
- (4) Tracking & Data Coordinator, Talent Search
Salary range: \$14,000 - \$18,000 per annum
- (5) Counselor, Student Life Office
Salary range: \$12,650 - \$19,479 per annum
- (6) Career/Transfer Counselor, Learning Resource Center
Salary range: \$17,300 - \$21,000 per annum
- (7) CHL Palau Outreach Educator
Salary range: \$12,653 - \$19,479 per annum

For application forms and information, please contact Karen Mobel at PCC Human Resources Office at 488-2470/71, ext. 227.

PCC is an Equal Opportunity Employer

FREE!!!



Palau Community College

MESEKIU'S NEWS



Friday, January 06, 2012

Weekly Newsletter

Volume 14, Issue 01

Employees Recognized for Years of Service



BOT Chair Bilung Gloria G. Salii & Dr. Tellei presenting award to Ann Sabra Ngirarorou - 26 years of service.



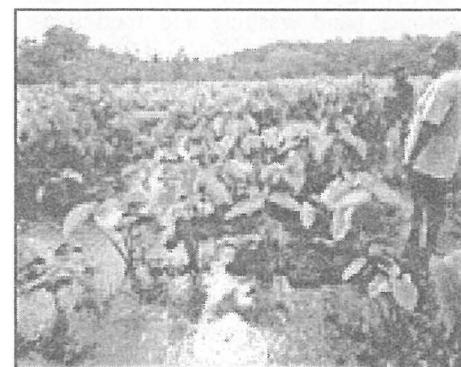
BOT Chair Bilung Gloria G. Salii & Dr. Tellei presenting award to Don Hanser - 26 years of service.

On December 22, 2011, PCC held its annual Christmas Luncheon for employees. The college presented employees with a certificate and a small token of appreciation and recognition for years of services in the following categories: 26 years - Ann Sabra Ngirarorou & Don Hanser; 25 years - Petrus Itelmong & Ephraim Ngirachitei; 20 years - Gaylord Rdech, Vernice Rechebei

& Mekreos Silil; 15 years - Lesley Adachi, Elia Rdiall & Gibson Towai; 10 years - Midori Mersai, Renetta Derbei Meyer & James Norman Sato; 5 years - Samantha Bells, Alice Faletam, Arlene Ignacio, Umang Kesolei, Galindez Kiep, Keiden Kintol, Hamilton Maech, Teongel Ngirkelau, Herman Rdech, Winfred Recheungel,

Recognition cont'd on p.4

Taro Project Launched at Peleliu



Taro patch site being surveyed by the CRE team.

CRE has begun researching the different variety of taro plants to see which variety of taro has tolerance to survive harsh environments resulting in climate change. The study is part of the Pacific Adaptation to

Climate Change in relation to food security. Researcher Dr. Aurora Del Rosario stated that Peleliu State was chosen because it had an environment that was conducive to the study they were doing. The study is looking at the tolerance of different variety of taro to water logged conditions (submerged completely) depending on the water and also whether there is salt water present.

The project required several taro patch sites to which the researchers have acquired and have begun planting different variety of taros. In mid July, the team will see which taro varieties survived the conditions and will have results available at that time. For more information about the project, contact CRE Office at 488-2746.

FAO Gives Workshop

On December 30, 2011, Financial Aid Office Director, Dahlia Katosang held a workshop for the Retention Committee and CPC. Director Katosang had attended a Federal Financial Aid workshop and upon her return, held a workshop to update the committees on what were the new requirements and procedures, including procedures and process to qualify for financial aid when adding new programs and/or new locations. She also discussed that for students with intellectual disabilities, they are able to receive financial aid assistance as long as the college develops a program that is approved for such students. This is to ensure that PCC is meeting and following federal regulations to provide financial support to all students who are eligible.

For more information on new financial aid regulations, please contact Financial Aid Office at 488-2470 ext. 265.



In the photo: (L-R): Registrar Adachi, Dean Daniel, Dean Chilton, Instructor Yaoch & Director Katosang.

Palau Community College is an accessible public educational institution helping to meet the technical, academic, cultural, social, and economic needs of the students and communities by promoting learning opportunities and developing personal excellence.

PTHSE Hosts Workshop

On December 13, 2011, a training workshop for Restaurant Etiquette was held at Palau Tourism & Hospitality School of Excellence (PTHSE) sponsored by Pacific Asia Travel Association (PATA), Palau Small Business Development Center (SBDC) and Palau Visitors Authority (PVA) with the support of Belau Tourism Association (BTA) and United Airlines. Giving the 2 day workshop on Host/Hostess services;

Table Etiquette; Table Setting; Suggestive selling & Up selling servicing etiquette was Mr. Marcus Alfredo Cepeda, a professional with over 29 years of experience in the hospitality industry who is the owner/instructor/consultant of ACepeda Consultant and Vocational Training.

For more information on upcoming trainings/workshops, contact SBDC at 587-6004 or PVA at 488-1930.



Day 1 trainees with Mr. Marcus Alfredo Cepeda (front center).



Day 2 trainees and sponsors after the training and receiving their certificates.

Employees Take On 2012 Endowment Challenge

With the challenge that President Tellei made on December 28, 2011 to raise 1 million dollars by the end of December 2012, Vice President of Administration & Finance, Jay Olegeriil responded by doubling his bi-weekly contribution starting this pay period for 2012. VP Olegeriil is asking the Executive Committee members to be the first ones to double their contributions. Midori Mersai, an English Instructor has also doubled her endowment contributions plus an extra dollar. Dr. Tellei's message to PCC employees who are not endowment

donors and asking them to become donors made an impact, and employees like Business Instructor Robert Ramarui have come in to sign up and become contributors starting this first pay period.

If you are considering becoming an Endowment Fund contributor or wish to double your contribution to help meet Dr. Tellei's challenge, contact the Development Office at 488-2470/2471 ext. 252, 253 and ask for Dilubch or Adora.

Flu & Gastro Cases Increases

MOH Press Release

As the holidays are being celebrated, the Belau National Hospital is seeing an increase in influenza (flu) and gastroenteritis cases. Since December 24, over 100 patients have been admitted with gastro and other flu-like symptoms.

The public is urged to continue practicing hygienic habits such as proper hand washing and food handling to prevent further spread of gastroenteritis and the flu. Although there may be many social activities and gatherings, those experiencing symptoms of flu and gastro are encouraged to remain home or seek medical attention.

Furthermore, the public is requested to adhere to visitation guidelines and rules when visiting inpatients at the Belau National Hospital. Children under 12 years of age are not allowed within the hospital at any time unless seeking medical attention. Hospital visiting hours remain unchanged and are between 10am and 2pm in the daytime and between 6pm and 8pm in the evenings. Keeping with these rules will limit the spread of gastro within the hospital.

Gastroenteritis often results with diarrhea and vomiting and can be caused by bacterial infection or food and water poisoning. It can be prevented through proper hand washing and food handling. Keeping kitchen and bathroom areas clean inside the house also prevents the risk of gastro. Influenza (flu) like illnesses can be also prevented by proper hand washing and its spread can be prevented by covering coughs and sneezes.

For more information on how to prevent gastroenteritis and the flu, contact the Community Advocacy Program (CAP) at 488-2002 or the Infection Control and Prevention Office at the Belau National Hospital at 488-2553.

BITS AND PIECES...

TAX REFUND

The Bureau of Revenue, Customs & Taxation Application for Refunds for Tuition/Contribution to Non Profit Organization is now available for pickup at the Development Office. Stop by and see Dilubch, Adora or Alvina to help you with your Endowment refund or call 488-2470/2471 ext. 252, 253.

NO PARKING ZONE

ATTENTION ALL STUDENTS, FACULTY & STAFF:

All vehicles that are parked illegally in the NO PARKING ZONES are subject to applicable penalties.

ADDITIONAL PARKING SPACES are located at the lower campus, near the track and field. Please utilize them. Your cooperation is appreciated.

NO PARKING ZONES

- * Under Mango Tree (Loop)
- * Double Parking
- * Handicapped Parking (unless with sticker)
- * Side of Bank of Guam & Snack Stop
- * ALL driveways

If you have questions about the parking, please don't hesitate to contact Jay Olegeriil or Todd Ngiramengior @ 488-2470 ext. 343 or 225.

News/Stories Wanted

MESEKIU'S NEWS welcomes stories/articles/announcements from students, faculty, and staff. Submission deadline is Monday at 4:30 p.m. in hard and electronic copies to adoraa@palau.edu, dilubchs@palau.edu, and alvinam@palau.edu.

Please call ext. 250/252/253 if you intend to submit your article after Monday or for more information.

Spring 2012 Registration Schedule

Prospective graduates & First time students	Monday	Jan. 09, 2012	8:30-11:00 AM
Continuing, Returning, Readmit & Transfer students	Monday	Jan. 09, 2012	1:00-4:00 PM
	Tuesday	Jan. 10, 2012	8:30-11:00 AM 1:00-4:00 PM
	Wednesday	Jan. 11, 2012	8:30-11:00 AM
Late Registration	Thursday	Jan. 12, 2012	8:30-11:00 AM 1:00-4:00 PM
	Friday	Jan. 13, 2012	8:30-11:00 AM 1:00-4:00 PM

Basketball, Table Tennis & Billiard Results

Contributed by Recreation Office

During Fall 2011 Semester, the Recreation Office held intramural tournament for basketball, table tennis and billiards. The following are the official results of the tournaments that concluded on December 09, 2011:

Basketball Intramural -

- 1st - Outer Kids 1
- 2nd - Meda
- 3rd - Waqabese A

Table Tennis (Co-Ed)

- 1st - Dilmowais Rechirei & Darrel Kokichi
- 2nd - Zoya Renguul & Ngirameketii Ngirkelau

- 3rd - Benjamin Numaw & Berica Laamow

Table Tennis (Female)

- 1st - Zoya Renguul
- 2nd - Dilmowais Rechirei
- 3rd - Lisa Sulog

Table Tennis (Male)

- 1st - Kenry Boaz
- 2nd - Arthur Deffmew
- 3rd - Benjamin Numaw

Billiard (Male Single)

- 1st - John Moon Chew
- 2nd - Samsel Saburo
- 3rd - Ralph Kinu

Tournament cont'd on p.4



Team Outer Kids I after their winning game.