

## Alumni Notes

### Class of 1974 (MOC)

Alexis Kinto



1974 - Earned a Vocational Certificate degree in Multi-Media. Employed in the Ministry of PIIC - Public Works for the past 20 years as a Heavy Equipment Operator. *Message: Education is the key to success.*

### Class of 2000 (PCC)

Jocelyne Tonyokwe



2000 - Earned an Associate of Science degree in Nursing. Employed in the Ministry of Health for the past 14 years. A Registered Nurse for Belau National Hospital. *Message: The nursing career is a rewarding occupation. We need people*

*in the nursing profession for our communities and to take care of own people.*

### Class of 2004 (PCC)

Iverson Sadang



2004- Earned a Certificate of Achievement degree in Agriculture. A Quarantine officer working in the Division of Quarantine in the Bureau of Agriculture for the past 6 years.

**Alumni Notes** showcases MOC & PCC alumni who are positive role models and contribute to the quality of life in their local communities. If you are that alumnus/alumna or know someone who is, please contact the PCC Development Office at telephone number 488-2471. We would like to feature you in future issues of the *Mesekiu's News*.

**Mesekiu's News**  
Palau Community College  
P.O. Box 9, Koror, Palau 96940

### Celebrating Birthdays

Harline Haruo Jan. 15



Happy Birthday To You!

# New Endowment Donors

## DECEMBER 2010

Renee Benardo, MOE-Airai Elem.  
Shelly K. Imetengel, MOE-Airai Elem.  
Weena Mereb, MOE-Special Ed.  
Wycliff Rechemang, PNCC  
Michael Siliatg, PCC-CRE  
Nanumi Toribiong, Galileo E. Saiske  
MOF-Div. of Revenue & Taxation  
Kameril Sasao, MOE-Airai Elem.  
Annette O. Tirso, MOE-Special Ed.



Freda Harvey



Wycliff Rechemang



Charley Simeon



Michael Siliang



Carter Ngirabong

## JANUARY 2011

Reilly Hideos, MOE-Ngaraard Elem.  
Elmer Rdiall, Min. of PIIC-Public Works  
Marvin Wasisang, MOE-Ngaraard Elem.  
Carter Ngirabong, MNRET-Division of  
Quarantine  
Freda Harvey, MOE-Ngaraard Elem.  
Charley Simeon, MOH- Division of  
Environmental Health

## 2011 SPRING SEMESTER 8 - WEEK CLASSES

SCHEDULE of EVENTS	1st 8-Week Session	2nd 8-Week Session
	Jan. 15 - Mar. 12, 2011	Mar. 19 - May 14, 2011
First Day of Instruction	Jan. 17	March 21
Drop & Add Period	Jan. 15 (Sat. Classes) Jan. 17 - 19	March 19 (Sat. Classes) March 21 - 23
Last Day to Remove "I" Grades for Fall 2010	Feb. 26, 2011	Feb. 26, 2011
Midterm	Feb. 7 - 11 Feb. 05 (Sat. Classes)	April 11 - 15 April 09 (Sat. Classes)
Day for all Withdrawals	Feb. 18	April 22
Last Day of Instruction & Final Examinations	March 07 - 11 Mar. 05 (Sat. Classes)	May 09 - 13 May 07 (Sat. Classes)
Graduates' Grade Due	Mar. 18 (by 11:00 a.m.)	May 18 (by 11:00 a.m.)
Grades Due	Mar. 18 (by 11:00 a.m.)	May 23 (by 11:00 a.m.)

Note: In order to meet the required instructional contact hours, classes that fall during holidays must meet on those holidays.

## PALAU BEACH BUNGALOWS

Peace & Relaxation Palauan Style!

Only \$40+tax daily rate

Private a/c bedroom & bath, living room, kitchenette

Beachside on big island of Babeldaob

Melekeok State

30 minutes from Palau International Airport

RESERVATIONS: 680.587.2533

Swim, snorkel, jungle walks, cultural sites

palaubeachbungalows@palaunet.com

www.palauparadise.com

## Vacancy Announcement

(1) Computer Technician, Computer Services Office

Salary range: \$12,049 - 20,607 per annum

(2) Director, Human Resources Office

Salary range: \$18,730 - 28,833 per annum

(3) Director, Finance

Salary range: \$18,730 - 28,833 per annum

For application forms and information, please contact Karen Moberl at PCC Human Resources Office at 488-2470/71, ext. 227.

PCC is an Equal Opportunity Action Employer

FREE!!

# Palau Community College



# MESEKIU'S NEWS



Friday, January 07, 2011

Weekly Newsletter

Volume 13, Issue 1

## March Narrative Report Under Review



(r-l) Taro, Rimirch, Ngirachitei, Tadao, Rechebei, Timarong, Olikong, Belelai, Olegeriil, Ngiralmu, Sara, Ngiramengior, Tellei. (back seats) Temaungil, Marcil, Daniel, Maui & Ngiraikeleau.

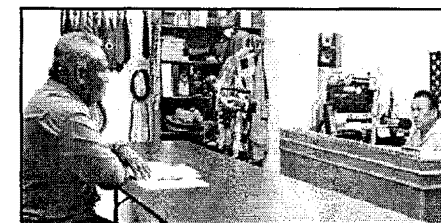
Pres. Tellei, the Executive Committee, and the four recommendaton chairpersons of the 2011 Steering Committee joined heads together again to review the accreditation narrative report that is due in two months time.

Pres. Tellei opened the meeting, a first meeting of the new year, with an encouraging note of confidence that 2011 is a

notable year of self improvement process. He also emphasized that all college personnel must collaborate together in a unified effort to continue to address the accrediting commission's recommendations as well as bring to light the current college processes that are partially done or may not be as evident as they could be, and the intended plans to improve them.

## 2010 PCC Highlights

New Year - New Resolutions - New Approaches of Reaching Out



Tellei & Diaz.

President Tellei, on behalf of the Board of Trustees, faculty, staff and students, delivered the college 2010 highlights to the people of Palau in a televised appearance with Senator Diaz at Diaz Broadcasting Company and a radio talk show on T8AA with Charlie Olkeriil on Friday, December 31, 2010. He also thanked all donors and supporters



Tellei & Olkeriil.

of the college who have articulated their support through financial and in-kind donations to the college over the years as well as the PCC Endowment Fund, which has reached its \$2 million goal for 2010. The PCC Endowment Fund allows the college to continue serving the people of Palau and the Pacific region.

## ASPCC Ngiraikeleau & Etpison to Japan

The Associated Students of PCC President Jewish O. Ngiraikeleau and Treasurer Leilani Etpison will leave for Japan to participate in a one-week student exchange program sponsored by Waseda University. The program begins on Jan. 31 - Feb. 06, 2011 and aims to promote student cultural exchanges around the world.

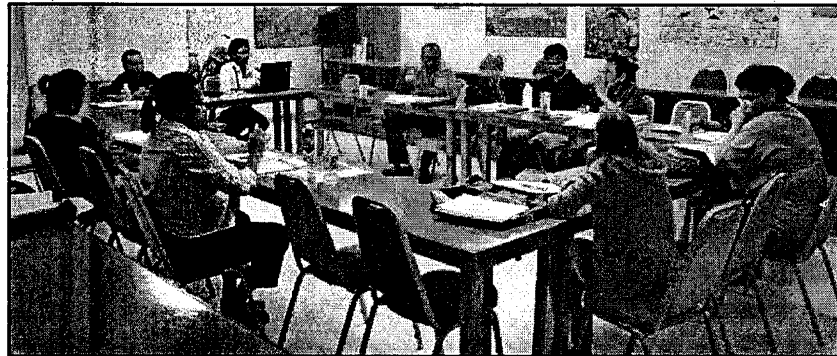


The trip is a follow up outcome of Mr. Kazuki Kawa's trip to Palau last November to visit the college. While he was here, he met with Dean Edward and ASPCC officers. Mr. Kawa is manager of International Affairs Dept. University Student Chamber- of Waseda University, which is one of several universities in Japan that enjoys a mutual agreement in student exchange programs with Palau Community College.

### MISSION

Palau Community College is an accessible public educational institution helping to meet technical, academic, cultural, social, and economic needs of students and communities by promoting learning opportunities and developing personal excellence.

## Steering Committee Reviews March Report



(r-l) Temaungil, Olikong, Belelai, Katosang, Tadao, Ngiramengior, Marcil, Daniel, Rechebei, & Edward.

Since its appointment to lead the accreditation process in response to the accrediting commission's recommendations, the 2011 Follow Up Self Study Steering Committee has pursued a determined course of action to accomplish its objective. The committee met on Tuesday, Dec. 28, 2010, at CE Training Room to review the four recommendations report.

Marianne Temaungil, the committee's editor, then edited and organized the report into the narrative format. The narrative report was presented by the four recommendation chairs to President Tellei and the Executive Committee on January 05, 2010 meeting.

The report will be presented to the Board of Trustees on January 10, 2010.

### 2011 SPRING SEMESTER JANUARY 4 - MAY 23, 2011 16 WEEK INSTRUCTIONS

Placement Testing	January 4 - 7 (T-F)
Freshman Orientation	January 6 (TH)
Academic Advising and Registration	January 10 - 13 (M-TH)
First Day of Instruction	January 17 (M)
Credit by Examination Period	January 17 - 19 (M-W)
Late Registration/Drop & Add Period	January 17 - 21, 2011 (M-F)
Last Day to change CR/NC & Audit Grades	January 21 (F)
Last Day to Remove Incomplete Grades For Fall	February 25 (F)
Mid Term Period	March 7 - 11 (M-F)
Holiday: Youth Day	March 15 (T)
Students' Spring Break	March 14 - 18 (M-F)
Last Day for All Withdrawals	March 25 (F)
PCC Charter Day Celebration	April 1 (F)
PCC Charter Day	April 2 (SA)
Holiday: Senior Citizens' Day	May 5 (TH)
Last Day of Instruction	May 13 (F)
Final Examination Period	May 16 - 18 (M-W)
Graduates' Grades Due	May 18 (W)
Grades Due	May 23 (M)
Commencement Exercises	May 27 (F)
Last Day for Change of Grades	May 30 (M)

2011 SPRING SEMESTER REGISTRATION  
2011 Spring - 8-Week Classes See the last page

First Day of Classes Monday, Jan. 17, 2011

## PCC Appreciates Bi-weekly Donors to Endowment Fund

On Wednesday, Dec. 29, 2010, the college hosted the annual End-of-the-Year Get Together in appreciation of all bi-weekly donors to the college endowment fund.

The donors and Pres. Tellei were joined by



McGrensky.

the gracious presence of Mission Deputy Richard McGrensky of the U.S Embassy, who presented his donation of \$50 along with another \$50 donation from the U.S Ambassador Helen Reed-Rowe to the endowment fund. Surprisingly enough, Mr. McCrensky entered the raffle drawing and won a prize. He returned it as his donation to the endowment drive. THANK YOU, Ambassador Rowe and Mission Deputy McGrensky.



Lukas helping donors fill their refund applications.



Bi-weekly donors at the lunch table.



PCC staff giving raffle tickets.

## BITS AND PIECES...

### ADULT HIGH SCHOOL PROGRAM

2011 Airai Spring Semester  
PCC Adult High School at Airai State to begin in January 2011

Contact the following persons to register for the program.

Laura Mangham 488-0826  
Hedrick Kual @ 488-2471 ext. 267  
Debolyne Arurang @ 587-3511

### An Apology

This is to apologize the inadvertent omission of Felix J. Lenson in the List of Fall Semester 2010 Graduates that was published in Mesekiu's News, Dec. 24, 2010, V12-51.

Lenson J. Felix  
Small Engine & Outboard Marine Technology (SE)  
Associate of Applied Science degree  
Chuuk State, FSM

### Annual Report Due Jan. 25, 2011

Extended Submission Date  
JAN. 25, 2011

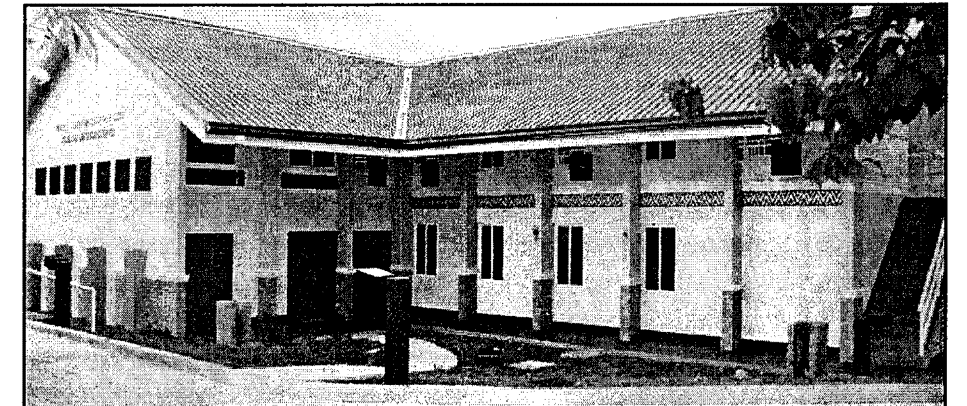
Hard and Electronic copies to the Development Office  
alvinam@palau.edu

### Wanted

MESEKIU'S NEWS welcomes stories/articles/announcements from students, faculty, and staff. Submission deadline is Monday at 4:30 p.m. in hard and electronic copies to alvinam@palau.edu.

Please call ext. 251/253 if you intend to submit your article after Monday.

## PTHSE to Open in Spring 2011



### Palau Tourism & Hospitality School of Excellence (PTHSE)

A commercial kitchen, a restaurant, a bar, an alfresco area, a mock hotel suite, reception and concierge areas, and two classrooms. The first educational & training arena for PTHSE students to learn - to listen - to express - to experiment - to create - and to engage in numerous industry-based projects that support and enhance career growth. A collaborative effort between PCC, Belau Tourism Association, and the Ministry of Education.

## Dorm Students Celebrate New Year

The dorm students celebrated the New Year with a party on Dec. 31, 2010, with a live band featuring *Nangas*, a local band group.

## Thank You For Your Support

2010 END-OF-THE-YEAR  
GET TOGETHER

Cliffside Hotel  
Computer Plus  
Isaias Oiterong, Koror State Government  
Public Works

Marcello Pierantozzi  
Melusch-Dil Beauty Salon  
Palasia Hotel  
Palau Beach Bungalows  
Palau Community College  
Sonia's Beauty Salon  
Surangel & Sons Company  
WCTC

PCC Admin. & Finance Dept.  
-- Maintenance Crew  
-- Ezra Takeo & staff, Food Services  
PCC Personnel & Staff, especially  
Dilubch Samil, Grace Merong, Pioria Asito, Valyn Aguon, Taina Yano, Courtney Higa, Leona Blaluk, Ligaya Sara, Verna Kyota, Elenita Brel, & Hulda Lukas

## 2011 Registration Schedule

MON. JAN. 10

8:00 - 11:30 a.m.

Spr & Sum Prospective Grad & SDSU Cohort

1:00 - 3:30 p.m. Continuing Students with 21- 48 Credits Left

TUES. JAN. 11

8:30 - 11:30 a.m. Continuing Students with 49- 53 Credits Left

1:00 - 3:30 p.m. Continuing Students with 54 -68 Credits Left

WED. JAN. 12

8:30 - 11:30 a.m. First-Time New Students

1:00 - 3:30 p.m. Returning, Re-admit, Unclassified, Enrichment & Dual Students

THURS. JAN. 13

8:30 - 11:30 a.m. OPEN to Anyone

1:00 - 3:30 p.m. OPEN to Anyone

## Endowment Tax Refunds for Year 2010

We can help process your refund application forms. Bring your last paycheck's stub. Call 488-2470 ext. 251, 253 for more information.