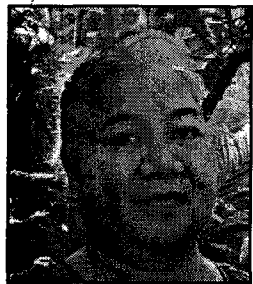


Alumni Notes

Class of 1983 (MOC)

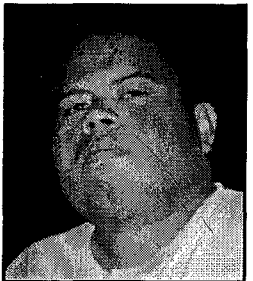
Lory Ngemaes



1983 - Earned her Certificate of Achievement degree in Business Education-General Office Clerk. She has been working at PCAA - Headstart as the Data Tech Coordinator for over 20 years now.

Class of 2003 (PCC)

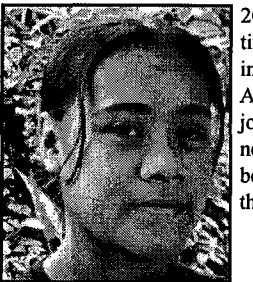
Jordy Ngiraidis



2003 - Earned his Certificate of Achievement in General Electronics. Jordy recently joined SARS as a Weather Observer and Aviation Safety/Traffic Observer. He has been working for 5 months and has been enjoying the work so far.

Class of 2005 (PCC)

Ylong Ngemaes



2005 - Earned her Certificate of Achievement in Criminal Justice. After graduation, she joined BOH as a Business Teller, and has been working there for the past five years.

Alumni Notes showcases MOC & PCC alumni who are positive role models and contribute to the quality of life in their local communities. If you are that alumnus/alumna or know someone who is, please contact the PCC Development Office at telephone number 488-2471. We would like to feature you in future issues of the *Mesekiu's News*.

Mesekiu's News
Palau Community College
P.O. Box 9, Koror, Palau 96940

Celebrating Birthdays

Tim Mitchell	Mar 12
Thomas Taro	Mar 13
Gibson Towai	Mar 13
Petrus Itelmong	Mar 15
Karen Mobil	Mar 17
Bruce Rimirch	Mar 19

Happy Birthday To You!

SDSU - On Site March 14 - 18

SDSU instructor Dr. Irina Weisblat will be on campus to meet with the undergraduate students for on site lectures from March 14 - 18. The course SDSU UG students are starting is ARP 382: Directed Teaching. This is the 15th course in an 18 course requirement to complete an Undergraduate Degree from SDSU. By 2011 December, the SDSU UG students will have completed all 18 requirements to meet the degree requirements for completion.

PCC Charter Day
Coming soon!!!
APRIL 01, 2011

DONORS

WE CAN HELP YOU
PROCESS YOUR REFUND
APPLICATIONS.

DEADLINE FOR APPLICATIONS
TO BE PROCESSED
IS MARCH 31, 2011.

Fill the form and bring your last
payday's check stub for 2010
to the Development Office.
Call 488-2470 ext. 253, 252, 251

PALAU BEACH BUNGALOWS

Peace & Relaxation Palauan Style!
Only \$40+tax daily rate
Private a/c bedroom&bath, living room, kitchenette.
Beachside on big island of Babeldaob
Melekeok State
30 minutes from Palau International Airport
RESERVATIONS: 680.587.2533
Swim, snorkel, jungle walks, cultural sites
palaubeachbungalows@palaunet.com
www.palauparadise.com

MESEKIU Basketball Corner

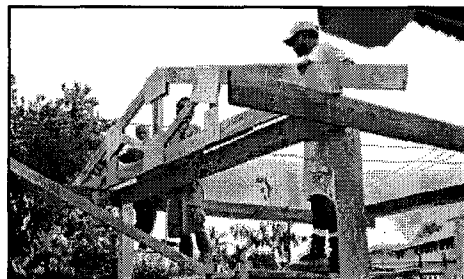
Mesekiu Team update: All games have been completed in the first round. Upcoming games are coming soon. Please keep a lookout for dates and times. Come and cheer for our Mesekiu Team!!

Project at PHS Cont'd from p.3

and hang out, eat lunch, and be on campus in a relaxed atmosphere without having to go off campus.



Maintenance guys laying the tin roofing for first hut.



Setting the A-Frame for the roofing of the 2nd hut.

PCC CAN HELP YOU
UPGRADE YOUR SKILLS TO
BOOST YOUR CAREER!

COME TO PCC!
Call 488-2470

Vacancy Announcement

- (1) Computer Technician, Computer Services Office
Salary range: \$12,049 - 20,607 per annum
- (2) Director, Human Resources Office
Salary range: \$18,730 - 28,833 per annum
- (3) Director, Finance
Salary range: \$18,730 - 28,833 per annum

For application forms and information, please contact Karen Mobil at PCC Human Resources Office at 488-2470/71, ext. 227.

PCC is an Equal Opportunity Employer

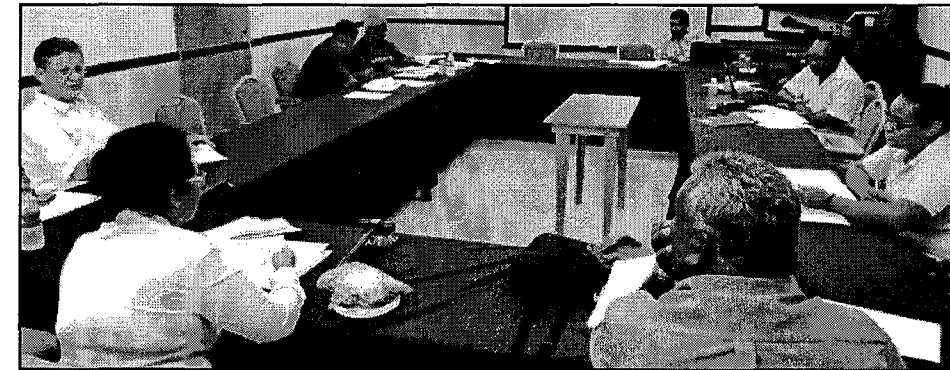
FREE!! Palau Community College
MESEKIU'S NEWS

Friday, March 11, 2011 Weekly Newsletter Volume 13, Issue 10

BOT Approves Follow-Up Report

The PCC Board of Trustees met on Thursday, Mar. 10, 2011, to review the 2011 Follow Up Report to the Accrediting Commission on Community and Junior Colleges (ACCJC). With a quorum present, the Board did a third and final review and

unanimously adopted the Follow Up Report, to which President Tellei and Chairperson Sali signed, certifying that the report was accurate and reflected the true nature of college responses to the commission's recommendations and findings.



L-R (clockwise): Chairwoman Bilung G. Sali; Investment Consultant Daniel Roland, Senior VP - Morgan Stanley Smith Barney; Member Dr. Emias Robert, Member Buk Ramarui; VP Olegeriil; Todd Ngriranngior; Student Trustee Michelle Ueda; Dr. Patrick Tellei

ASPCC Officers & RPSO President Sworn In

The Associated Students of PCC and Republic of Palau Student Organization officers/presidents voted into office by the student body were sworn into their official positions on Friday, March 04, 2011 by Dean of Students, Marenisia Edward. The ceremony was witnessed by students,

Student Life Director Ngiralmu, Registrar Adachi, Counselors Alexander and Ngirmeriil. All students are encouraged to meet with the new officers and discuss with them your interests and concerns as a student at the ASPCC office located 3rd floor of Tan Siu Lin Library.

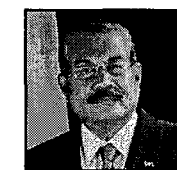


Desiree, Joannie, Tirisa, Fenny repeating the oath for office to Dean Edward.

Palau Community College is an accessible public educational institution helping to meet the technical, academic, cultural, social, and economic needs of students and communities by promoting learning opportunities and developing personal excellence.

Toribiong to Conduct 3rd Lecture

Contributed by Continuing Education Office



His Excellency, President Johnson Toribiong, will be presenting the third topic for the upcoming lecture series that will focus on the Compact of Free Association,

how the economic and military treaty defines our relationship with the United States of America, touching on some of the key players, and their roles and perspectives on the subject.

Toribiong Cont'd p.3

Campus WI-FI Hotspots Available

ATTENTION STUDENTS! You can now get online using the PNCC WI-FI hotspots that are located around campus. WI-FI hotspots are: Kedam Bldg (Dorm Office) area, Ukall Bldg (Board Room), Sebus Bldg (Nursing Classrooms), and Tan Siu Lin Library. To connect to PNCC WI-FI, you will need to purchase an internet card, which will be available at the bookstore in the near future or you may purchase them at PNCC.

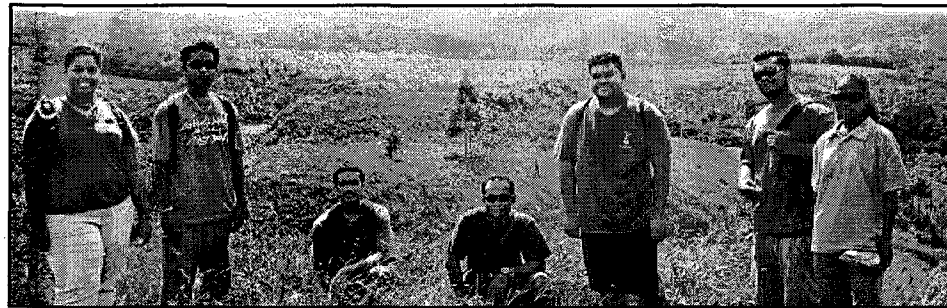
If you have trouble connecting to the internet, the GEEK SQUAD members are ready to assist you and help you get connected. You can locate them at the Online Lab.

Archeology Students Visit Roismid Terrace in Aimeliik

Contributed by Adjunct Instructor-Sunny Ngirmang

On March 03, 2011, PCC's archaeology students visited the Roismid Terrace in Aimeliik State. The students were greeted by Aimeliik state representatives, Lelly Obakerbau and Berline Ngirameked at Bai er Keiai, Ngerkeiai. Ms. Obakerbau briefly explained the oral history associated to the Roismid terrace set and the significance of the site to the people of Aimeliik. The field visit allows the student to gain an on-site perspective and insight of the site's environment, feeling, and the massive area the terrace set covers. The archaeology class aims to enrich the students what archaeology is all about while at the same time em-

phasize on Palau's archaeological history as the students learn and discover prehistory of our island. PCC Adjunct Instructor, Ms. Sunny Ngirmang and the PCC archaeology students would like to thank the Governor of Aimeliik State, Gov. Leilani N. Reklai for giving the opportunity for the students to visit their sites and also to the Bureau of Arts & Culture staff for providing on-site field assistance. For more information regarding Aimeliik historical site visits and/or site information, contact the Aimeliik State Office at telephone number 544-2697.



PCC's archaeology students with BAC staff and Aimeliik State Rep during their archaeological site visit to Roismid Terrace/Ouballang el bukl er a Imul on March 03.

OMIP Computer Servicing, Repair and Maintenance

Contributed by Don Hanser

A small, but dedicated group of trainees recently completed a 120-hr training in computer servicing, repair and maintenance. The class was divided into 3 main parts: an introduction to working in electronics, repair of LCD monitors, and maintenance and service of the system unit. Each unit had some lecture, followed by hands-on work in the laboratory. Trainees learned how to use both analog and digital multimeters to identify defective parts, and how to solder and de-solder diodes, transistors, and integrated chips. They also learned how to perform system configurations, and upgrade and customize the computer.

The instructor for the course was Joel Yabes. Awarded certificates for successfully completing the course were: Jonathan Temol, Peter Mikel, Lucio Obakerbau, Stephanie Tmodrang, Roger Mukai, and Georgialynn Malsol.

Navigation Course Now Being Tracked

The Non-Instrument Navigation Class, which uses only the stars as a guide to navigate throughout the Pacific Ocean has made vast improvement. The voyage, navigated using traditional means can now be tracked while on its journey to the different Micronesian islands through the use of navigational instruments: iridium satellite phone and SPOT, a hand held satellite messaging and tracking safety device. Although the course teaches students to navigate using non-instrumental means, the tracking of the vessel and voyage via technology through the President's Office is to ensure that the crew and students are safe, and PCC is always aware of where the vessel is at all times. If you are interested in joining this course, contact PCC at 488-2470 / 2471 to find out when the next course will begin.

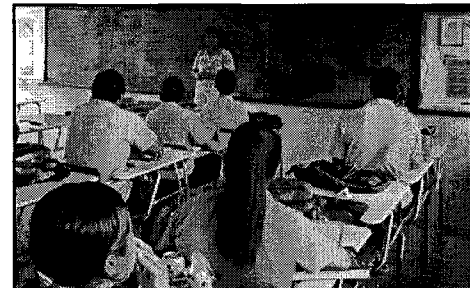
MHS, PHS, & PMA Invited to Attend APAFS Conference

Business Instructors, Robert Ramarui and Keiden Skilang have been busy visiting high schools throughout Palau, inviting students to come and attend the Asia Pacific Association for Fiduciary Studies (APAFS) conference sponsored by PCC on March 18, 2011 from 9:00am - 4:00pm at the Assembly Hall. The invitation extended informed students about the conference which is set to expand one's world view on

investing and thinking at a global scale, to help raise the level of understanding and standards of practice among fiduciaries in the region, and to understand prudent stewardship of funds entrusted to their care, investments, stock markets, and more. High school students showed interest in the conference. For more information regarding the conference please contact Keiden Skilang at 488-2470 / 2471 ext. 270.



Students from PMA and PHS during the APAFS invitation presented by PCC.



BITS AND PIECES...

Student ID Card

Students - The semester is halfway done!!! Have you gotten your ID?

Student Services is still processing Student ID cards. Please stop by and get your Student ID Card made.

Hours: 9:00am - 11:00am
1:00pm - 3:00pm

Be sure to carry your Student ID Card with you always.

TAN SIU LIN PCC LIBRARY

HOURS of Operation:

M - Th 8:00am - 8:00pm
Friday 8:00am - 6:00pm
Saturday 9:00am - 6:00pm
Sunday CLOSED

Thank you for your patronage. We are here to serve the students and the community.

COMPUTER LABS

Online Computer Lab (Rm 63)

This lab is only for students taking online courses and only online related work is done here. The online courses for the spring semester are: EN112, EN114, HI259 and SC249.

Lab hours: 8:00am - 8:00pm

Open Computer Lab (Rm 60)

Lab is for all students who need to use a computer. Also a place to print coursework. Not connected to internet. Only for course related work. Lab Hours:

9:00am - Noon / 2:00pm - 8:00pm

News/Stories Wanted

MESEKIU'S NEWS welcomes stories/articles/announcements from students, faculty, and staff. Submission deadline is Monday at 4:30 p.m. in hard and electronic copies to aduraa@palau.edu.

Please call ext. 252/253 if you intend to submit your article after Monday.

Toribiong Cont'd from p.1

Interested teachers, college & high school students, members of the general public are invited to join President Toribiong for this lecture on March 17, 2011 (Thursday) at 6:30pm at the Assembly Hall. The program will be also live on T8AA Radio. For more information, please contact CE Office at 488-6223 or Fermin Meriang, President's Press Secretary at 775-2601.

PCC Project at PHS

PCC has started a project - building four summer huts at Palau High School. Two frames for huts have been erected, and the maintenance crew have started putting the A-frames for the roofing. The project is a contribution from PCC to PHS - to provide much needed resting areas for PHS students. This will hopefully enable the students to take advantage of the huts

Project at PHS Cont'd p.4



Elzider Eledui, Scout Coordinator-KSG Scouting Program; John Mills, Field Director, Pacific Basin Scouting - Aloha Council, BSA; and Dr. Patrick U. Tellei, PCC President and board member of Palau Boy Scout met to discuss outreach/recruitment and activities for the youth.

Annual Career Technical Education Awareness Week

The Upcoming ANNUAL CAREER/TECHNICAL EDUCATION AWARENESS WEEK is on March 16 - 17, 2011. This is the annual college event that showcases not only the career and technical educational programs, but the projects of what the students have been learning from the classrooms. Students will be demonstrating to high school and elementary students, visitors and guests on what they have learned and showcasing the projects they have completed. Items that are showcased will also be on sale. There will be dressers, dressers with mirrors, closets with drawers and shelves, dinning table with chairs, cabinets, bbq grills, flower pots, dual purpose stoves, and more. The community is invited to join the college community on Thursday, March 17th, in the morning until noon

STEM Fair - March 18 at the Cafeteria

STEM (Science, Technology, Engineering, & Mathematics) Fair will take place on March 18, 2011 at the PCC Campus. Those with the winning science projects from all the elementary and high schools will showcase their projects at the PCC cafeteria. Grand prize for each category is a desktop computer for the school's science classroom. For more information about the STEM Fair, contact Thomas Taro, Committee Chairperson at 488-2746.

International Night Coming Up

ASPCC (The Associated Students of PCC is announcing that there will be an International Night on March 26, 2011 at 6pm - 11pm. More information will be forthcoming in following issues. You can also contact your representative or ASPCC officers at 488-2461 or Student Services at 488-2470/2471 ext. 229 to find out more about the event.