

Alumni Notes

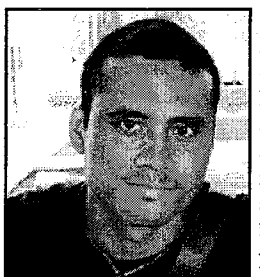
Class of 2008 Terra Temong



associate for the past 3 months.

Earned an Associate of Science (AS) degree in Business Accounting. Worked at the First Commercial Bank from 2008-2009, then at MOE as a teacher at Ngarchelong Elementary School SY 2009-2010. Is currently working at the Bank of Guam a Customer Service As-

Class of 2009 Neithan Adelbai



in the Philippines.

Earned his Associate of Applied Science (AAS) degree in Automotive Mechanics. Worked at Payless Store while attending PCC. Currently working at MOH as a nurse assistant. Has been awarded a four year fully paid scholarship to a Nursing School

Class of 2010 Juliana Ngiraingas



Earned her Associate of Science (AS) degree in Nursing. Applied to the Ministry of Health right after graduation and was hired. Currently working as a nurse. You can see her when you visit the medical ward.

Alumni Notes showcases MOC & PCC alumni who are positive role models and contribute to the quality of life in their local communities. If you are that alumnus/alumna or know someone who is, please contact the PCC Development Office at telephone number 488-2471. We would like to feature you in future issues of the *Mesekiu's News*.

Mesekiu's News
Palau Community College
P.O. Box 9, Koror, Palau 96940

Celebrating Birthdays

Murais Sebangiol Apr 04
Jessica Brooks Apr 10
Glendalynn Ngirme Apr 10

Happy Birthday To You!

Site Visit Cont'd from p.2

Calvin Emesiochel for providing the on-site field assistance. For more information regarding Airai historical site visits and/or site information, contact the Airai State Office at telephone number 587-2135 or 587-3511.

New Members Join Endowment Fund



Maria Joseph, a Math Instructor at the Learning Resource Center - PCC is a new member of the Endowment Fund. Welcome aboard Maria and thank you for joining the Endowment Fund.



Irving Dwight, a CRE-PCC staff is a new member of the Endowment Fund. Thank you for joining the Endowment Fund and for your support to PCC.

**PCC CAN HELP YOU
UPGRADE YOUR SKILLS TO
BOOST YOUR CAREER!
COME TO PCC!
Call 488-2470**

PALAU BEACH BUNGALOWS
Peace & Relaxation Palauan Style
Only \$40+tax daily rate
Private a/c bedroom&bath, living room, kitchenette
Beachside on big island of Babeldaob
Melekeok State
30 minutes from Palau International Airport
RESERVATIONS: 680.587.2533
Swim, snorkel, jungle walks, cultural sites
palaubeachbungalows@palau.net.com
www.palauparadise.com

News/Stories Wanted

MESEKIU'S NEWS welcomes stories/articles/announcements from students, faculty, and staff. Submission deadline is Monday at 4:30 p.m. in hard and electronic copies to aduraa@palau.edu.

Please call ext. 252/253 if you intend to submit your article after Monday.

Message of Appreciation



PCC would like to thank **Josepha Tutii** for many years of dedicated services. As a MOC/PCC graduate, she began working at MOC in 1980. Since 1994, she has been a CRE staff until her retirement on April 01, 2011. She was an Expanded Food Nutrition & Education Program (EFNEP) Food & Safety Nutritionist at CRE-R&D. THANK YOU for almost 31 years of service you have committed to PCC. We will always remember you. HAPPY RETIREMENT on APRIL 01, 2011!!

MA95 STUDENTS BASIC ALGEBRA CHALLENGE TEST

for MA95 students

SIGN UP Before APRIL 08
See your instructor
for details

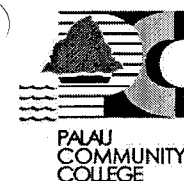
Vacancy Announcement

- (1) Computer Technician, Computer Services Office
Salary range: \$12,049 - 20,607 per annum
- (2) Director, Human Resources Office
Salary range: \$18,730 - 28,833 per annum
- (3) Director, Finance
Salary range: \$18,730 - 28,833 per annum

For application forms and information, please contact Karen Mobil at PCC Human Resources Office at 488-2470/71, ext. 227.

PCC is an Equal Opportunity Employer

FREE!!! Palau Community College



MESEKIU'S NEWS



Friday, April 01, 2011

Weekly Newsletter

Volume 13, Issue 13

College Reps Attend Regional Conference

Submitted by Deikola Olikong



Top (l-r) Rechebei, Temaungil, Daniel, Olikong, Ngiraingas & Belelai. Bottom(l-r) Ngirachitei, Tadao, Skilang, Chilton, & Ngiramengior.

A team of fourteen from PCC attended a regional workshop - "Capacity Building for Educational Excellence through Program Review and Integrated Institutional Planning" sponsored by the Accrediting Commission for Community and Junior Colleges (ACCJC) and Pacific Public Educational Consortium (PPEC). The workshop was held at Hawaii Tokai International College on Feb. 28 - Mar. 2, 2011. The team consisted of members from both the academic and non-academic programs; faculty, classified staff and administrators (Vice Presi-

PPEC Cont'd p.2

STEM Fair Awards Prizes

Submitted by Thomas Taro

The STEM Fair judges finalized the judging of all the categories for the divisions: High Schools and Elementary Schools on March 30, 2011. The Grand Prizes for each



Judges viewing GBH student projects.

division are as follows: Koror Elementary School won with 32 awards received; Palau High School won with 28 awards received. These two schools will hold the roaming trophy for the year, and will also receive a Desktop Computer set for the Science classroom. For the Elementary Schools, the following schools received awards: Koror Elementary School - 32 awards; Maris Stella School - 14; George B. Harris - 5; Meyuns - 3; SDA - 3; Ngarchelong - 2; Melekeok - 2; Ngchesar - 2; Aimeliik - 2. In the High School division, the following received the awards: PHS - 28; MHS - 25; Bethania - 9; BMS - 8; PMA - 4; and Emmaus - 1. Winners from 1st - 3rd place received cash prizes, while 4th - 6th received consolation prizes.

PCC & Bureau of Agriculture Host Livestock Management Academy

Submitted by Thomas Taro

The Palau Livestock Management Academy is an educational opportunity by the University of Hawaii and the University of Virgin Islands in cooperation with Palau Community College, University of Guam, Northern Marianas College, and the Bureau of Agriculture. It is designed to help livestock producers and land managers of all level of experience become better equipped to manage the animals and resources under their care. The program/workshop provided classroom instruction and field experience in sustainable grazing and livestock



Academy participants and trainers at R&D Station.

management practices.

Livestock Management Cont'd p.2

Palau Community College is an accessible public educational institution helping to meet the technical, academic, cultural, social, and economic needs of students and communities by promoting learning opportunities and developing personal excellence.

Archeology Students Visit Metuker er a Bisech

Submitted by Archaeology Class



PCC archaeology students with BAC Staff at Metuker er a Bisech.

forms, flakes, and shell midden. The site is one of the few quarry sites that shows the different activities associated with quarrying of disk money. The site has been recognized as an important cultural site and is being frequented by foreigners and local people. Protective rails were installed recently to mark the trail and

On March 24, 2011, PCC's archaeology students visited the Metuker er a Bisech Yapese quarry site in Airai State. The students were greeted by Airai State representatives, Elsa Beth Sugar and Rdiallul Marcelino Augustine. Elsa and Rdiallul briefly explained the oral history associated to the Yapese quarry site and the significance of the site to the people of Airai.

The site is a Yapese quarry site located on a cave along the west coast of the Rock Island to the south of the Ngeream Rock Island. The site is listed on the Palau Register of Historic Places. The site contains large complete disk money, unfinished disk money, quarry areas, caves, stone plat-

to protect the environment. Also, several signs have been erected along the trail to point out interesting features (*see Olsudong and Emesiochel 2004:74*)

The archaeology class aims to enrich the students what archaeology is about while at the same time emphasize on Palau's archaeological history as the students learn and discover who we were and where we came from plus, the importance of these sites to the overall prehistory of our island. Adjunct Instructor, Sunny Ngirmang and the PCC archaeology students would like to thank the Governor of Airai State, Governor Vicky N. Kanai for giving the opportunity for the students to visit their sites and also to the Bureau of Arts & Culture staff,

Site Visit Cont'd p.4

PPEC cont'd from p.1

dent Jay Olegeriil, Executive Assistant to the President Todd Ngiramengior, Associate Dean Sherman Daniel, FSA President Joe Chilton, CSO President Ephraim Ngrachitei, Director Kuye Belelai, Director Vernice Rechebei, Director Tchuzie Tadao, Associate Professor Marianne Temaungil, Assistant Professor Keiden Skilang, Institutional Researcher Ligaya Sara, Academic Advisor Geraldine Rengiil, Counselor Debra Ngrairngas, and Assistant ALO Deikola Olikong).

The three day workshop reminded the participants of the Pacific Institutions the expectations of ACCJC for Program Review and Integrated Planning; gave an opportunity to learn different models of Program Review and Integrated Institutional plan-

ning from Guam Community College, Hawaii Community College and Columbia College; Comprehensive Assessment Report; Opening and Closing the Loop; Integrated Program Review Into the Budgeting and Planning Process; and how to continue "Building Capacity" to be a remain an accredited institution. The workshop also allowed participants from different institutions of the Pacific to meet in small sessions to learn from each other, share issues, ask questions and share successful stories through mini case studies.

Among the presenters of the workshop were ACCJC Vice Presidents, Dr. Susan Clifford, Ms. Dorte Kristoffersen, and Dr. Ray Somera and his team from Guam Community College.

PCC Remembers the People of Japan

On March 25, 2011, the PCC Board Of Trustees presented a Resolution to Japan Embassy expressing condolences for the victims of the earthquake and tsunami, and reaffirming its support to the survivors and victims as they embark on the long journey to recovery and rebuilding their lives. In addition, PCC donated \$350.00 to support the Japan Relief Fund coordinated by Red Cross Society.

Livestock Management

cont'd from p.1



Participants and trainers at R&D Station.

The workshop attracted more than 50 participants including students from the Agricultural Science Program at PCC. The three day workshop provided an opportunity for participants to learn about Palau soil and soil management, livestock production, nutritional needs, grazing management, and reproduction, handling and care of animals. Animals that were covered in this workshop are cows, goats, pigs, and poultry. The workshop presenters were Dr. Mark Thorne, Dr. Jonathan Deenik, Dr. Ashley Stokes, Mr. Glen Fukumoto and John Powley from the University of Hawaii and Dr. Bob Godfrey from the University of the Virgin Islands.

STEM Fair cont'd from p.1

The Stem Fair Committee would like to thank those who came out to support the students who entered in the competition, and the collaboration of MOE and PCC that helped support the STEM Fair. Also, a big THANK YOU to all the judges who took time out of their busy work to visit the schools and look at the projects. Your time and dedication are appreciated.

BITS AND PIECES...

ANNOUNCEMENT

Rotary International Friendship Scholarship

The Rotary International District 2750 service organization is sponsoring a scholarship program for citizens of the Micronesian Region (Guam, CNMI, Palau, FSM) who are officially qualified to attend the University of Guam. The scholarship is awarded primarily to encourage students from this region to pursue a higher education and give them an opportunity to become a leader in their community.

Eligibility

- * Open to all undergraduates within their last 60 credit hours of the undergraduate degree program at the University of Guam.
- * Must be a full-time student at UOG or transferring to UOG from a 2-year college in their island or country, maintaining minimum GPA of 3.00.
- * Show evidence of financial need (determined by FAO at UOG).
- * Must not be a recipient of any other type of private or national scholarship.
- * Immediate family members of Rotary Club members are not eligible to participate or receive this scholarship.
- * Outside Guam applicants can be interviewed by the Rotary Club of his country. Rotary Club can write recommendation and send it to UOG FAO.

Application Procedure

- * Applicant must complete and submit a copy of the application form.
- * Must submit an Official Transcript.
- * Must submit a brief essay indicating one's educational, career, and leadership goals, including what the student hopes to achieve through one's degree and how one will use this education for the benefit of the community.
- * Must be willing to be interviewed by the Scholarship Committee.

DEADLINE

All application materials must be submitted to the UOG Financial Aid Office by April 15, 2011.

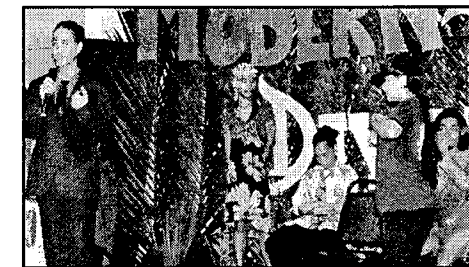
Stop by PCC Development Office for application forms.

International Night Draws Crowd

On Saturday March 26, 2011, PCC Cafeteria was packed with ASPCC students and community members who came to participate and enjoy the International Night: Modern-Culture-Diversity. The evening started with a Traditional/Cultural Fashion Show, where each state and nation had representatives showcase their outfits. The cultural outfits modeled by the students were beautiful and exquisite. During a short intermission, the community and student body got to taste different dishes prepared by each of the different entities.

Entities presented: Chuuk State Organization, Japan Exchange Student, Yap State Organization, Pohnpei Student Organization, Kosrae State Organization, Republic of Marshall Student Organization and Republic of Palau Student Organization.

Performances were group dances, skits by Chuukese and Yapese and a slide show and karate demonstration by Japanese students. Thanks to ASPCC members, students and advisors for putting together a wonderful show for all to enjoy.



Chuukese skit and dance.



Yapese dance and skit.



Pohnpeian dance.



Pohnpei, Yapese, & Palauan woman's traditional wear.



RMI & Kosrae doing the Haka dance.



Taichi (Japan) demonstrating karate.