



# Palau Community College MESEKIU'S NEWS

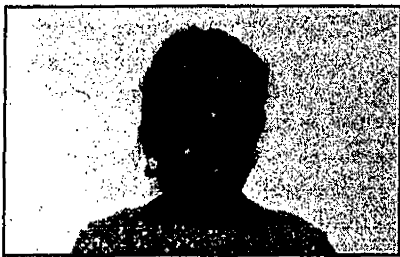


Friday, June 11, 1999

Weekly Newsletter

Volume 1, Issue 15

## PCC - UB Project Gets Funded Again



*Kuye Belelai*  
Director of Upward Bound Project

The Palau Community College scores as the Upward Bound Program gets funding for another four-year cycle beginning October 1, 1999. The Palau Community College proposal was among 942 applications submitted to the U.S. Department of Education last year. Of these approximately 770 applications, including that of PCC-UB application, were approved for funding.

The process of the Upward Bound program grants application is always competitive and certainly the UB staff are delighted that their grant application was approved. October 1, 1999 marks the 16th year of UB operations at the PCC.

### Attention PCC Students, Staff, and Faculty

Please submit your articles for our weekly newsletter, *Mesehiu's News*, to **Diluch Samal** at the Development Office no later than 3:00 p.m. on Wednesdays.  
Thank you for your support!!!

## New President, New Campus

Since the beginning of this year, Palau Community College has made a lot of changes around its campus. Not only does the college have a new President on board, but work on parking lots, relocation of offices, new sidewalks, stairs and rails are being done. Some other small building extensions are also being constructed.

The area in front of the AV Room is going to be paved for a faculty parking lot. Another parking area to be completed is below the traffic light at the intersection to the old hospital. This will be staff parking. The parking lot in front of the college will be for students' use.

New sidewalks, stairs and rails are in place. In front of the Administration building, a trail has been paved with the a rail erected to provide access for handicapped people who visit the college. The old door of the Administration building has been replaced with the new one.

A new building is now underway to house the PCC boats. The building is constructed in the area between the Small Engine & Outboard Motor Technology classroom and Maintenance's hut. Another extension was completed at the carpentry shop where the hut used to be. Benches will be put there for a resting place.

As the summer semester approaches, most of the offices have moved to new locations. From the direction of the old Bookstore going up to the Skills Center, the offices are as follows:

- CE Professional Development Training Room
- CE Office
- Federal Work Study.
- Admissions & Financial Aid Office
- Bookstore
- Student Services (Temporary).
- Y2K (Temporary)
- Upward Bound
- Project Beacon - Math & English Tutoring Center

The new SBA Office is located in the old Admissions & Financial Aid Office. Job Training Partnership Act (JTPA) is next to the OMIP Office in the Carpentry Shop by Education and Training (E&T). PCC faculty & staff are standing by ready to assist students and anyone in need of direction around the campus.



Area in front of the New Classroom Building. It will soon become faculty parking lot.



Parking lot in front of the college. This will save students' time from driving around looking for spaces to park.

**PCC Abai**  
in the next issue,  
June 18th.

## Special Bulletin



To: All PCC Students & Staff

### Student Partnership Conference

Ministry of Education, Health Education Program & Pride Club are inviting all interested students and staff to attend the 4th Annual Student Partnership Conference to be held June 16-17 at PCC Cafeteria. Additionally, there will be walk-a-thon on Tuesday, June 15, 1999 and parade on Friday, June 18. The walk-a-thon event begins at 5:30 a.m. from Palau National Track & Field to President's Office in Meyuns and back to the National Track & Field. The parade begins at 8:00 a.m. across AM/PM store to Palau National Gym (PNG) and OEK grounds where the closing ceremony will take place.

Since this is a beginning of summer classes, the possibility of participating will most likely interfere with your classes and work schedule. Therefore, I ask that those students, who do not have classes on these two days, to join and show our support and commitment for efforts in the war against drugs. Our presence in these events will make a whole lot of difference to our youth and our nation. If you wish to join the two events, please stop by/call Recreation and sign-up your name. Deadline to sign-up will be on June 14 at 4:30 a.m. If you need more information, please contact PCC Recreation Unit at 488-3885 or Mrs. Regina Mesebeluu at 488-1004 at the Ministry of Education.

### Library Extended Hours

The PCC Library is very pleased to announce expanded library hours. *From Monday June 7 through Tuesday August 3*, the PCC Library will be open the following hours:



*Monday through Friday: 8 - 8 p.m.  
Saturday: 9 a.m. - 6 p.m.*

We are resuming the successful Saturday hours that we started last semester, and initiating Friday evening hours for the first time ever in the history of the PCC Library!! Don't be bored (or say there is nothing to do...) - come to the PCC Library and READ, relax, send e-mail, or cruise the Internet!!

Several PCC instructors who thought they might be having the summer off and taking care of personal projects waiting for them, are instead finding themselves very busy conducting short-term training for the OMIP Training Project at the college.

If you visit the automechanics shop of Eugene Uehara, you will see about a dozen Ministry of Education bus drivers from all over Palau busily crawling under, over and around their buses as trainees participating in Eugene's third annual bus maintenance workshop for the Ministry of Education. Safety is the focus of the training, as the men tune-up, tighten-up and adjust all systems on these buses. The buses are a large investment, and these annual clinics help the Ministry insure that they will last for a very long time, keeping our children safe, and on time.

As soon as this year's bus maintenance training is over, Eugene will find himself traveling to Yap and Chuuk, to conduct classes on pump maintenance and repair for the water utilities in those islands. At the same time, another PCC instructor, Takemura Erungel, will be traveling to Pohnpei and Kosrae to conduct basic electricity classes for water utility workers in those islands. The college's expertise in these area has spread throughout the region, and we are meeting requests for these trainings during the summer.

When Takemura and Eugene complete the two weeks of classes scheduled at the utilities, they will both travel to Hawaii to receive two weeks of specialized training themselves, in electrical and mechanical areas related to water and wastewater systems. The company doing the training in Hawaii presently maintains all water and wastewater systems at the Honolulu airport, among other places on Oahu. They will return with increased expertise in the area of water and wastewater systems for Palau and the Micronesian region.

Over the last months, the two have spent many evening and weekend hours conducting introductory water and wastewater classes for water operators from all over Palau, including Koror-Airai, Angaur, and all states of Babeldaob. Hopefully, this is just the beginning. The OMIP Training Project aims to serve all government agencies, state and national, in Palau by offering infrastructure-related operations and maintenance training.

## SARE Approved Sustainable Marketing Strategy in Micronesia Project

The Western Region Sustainable Agriculture Research and Education (SARE) Administrative Council approved on April 16, 1999, this project called "Sustainable Marketing Strategy in Micronesia with a one-year budget of twenty seven thousand five hundred sixty four (\$27,564). This is one of the 12 successful research grant proposals funded out of the 67 proposals submitted by land grant institution in the US mainland and the American Pacific Islands to the SARE office. It aims to accomplish the following: 1. gather, collect, update and disseminate database on producers' organizations and members, local agricultural dealers and market outlets; 2. develop, analyze and disseminate database on local crop production and domestic market capacity; 3. pilot contract growing in marketing local produce and 4. train producers and stakeholders about BMPs, farm management and marketing.

# RETENTION WEB PAGE

## ACADEMIC CALENDAR

	<u>Session 1</u>	<u>Session 2</u>	<u>Session 3</u>
Freshmen Orientation & Placement Testing	May 26-28 (W-F)	May 26-28 (M-F)	May 26-28 (W-F)
Academic Advising & Registration	May 26 - June 2 (W-F)	May 26 - June 2 (W-W)	May 26 - June 2 (W-W)
<b>Holiday: ROP President's Day</b>	<b>June 1 (T)</b>	<b>June 1 (T)</b>	<b>June 1 (T)</b>
Registration Day	June 9 (W)	June 9 (W)	June 9 (W)
First Day of Instruction	June 14 (M)	June 14 (M)	July 12 (M)
Late Registration/Drop & Add Period	June 14-18 (M-F)	June 14-16 (M-W)	July 12-14 (M-W)
Last Day to Remove Incomplete Grades for Spring Semester '99	July 2 (F)	July 2 (F)	July 2 (F)
Midterm Period	July 5-8 (M-TH)	June 24 (TH)	July 22 (TH)
<b>Holiday: Constitutional Day</b>	<b>July 9 (F)</b>	<b>July 9 (F)</b>	<b>July 9 (F)</b>
Last Day for All Withdrawals	July 13 (T)	June 28 (M)	July 26 (M)
Last Day of Instruction	August 6 (F)	July 8 (TH)	August 5 (TH)
Final Examination Period	August 9-11 (M-W)	July 8 (TH) (6:00 - 8:00p.m.)	August 5 (TH) (6:00 - 8:00p.m.)
Grades Due	August 13 (F)	July 12 (M)	August 9 (M)
End of Summer Session	August 13 (F)	July 8 (TH)	August 5 (TH)

## Library Special Staff Members

The PCC Library would like to introduce our special staff members who make it possible to keep the Library open evening and Saturday hours.

On Saturday, two capable students staff the PCC Library from 9 a.m. - 6 p.m. They are Jeremy Ytlagmar and Julian Uguliyor. Both Jeremy and Julian are second - year Construction Technology students. Jeremy is a native of Fassarai, Ulithi Atoll, Yap State and Julian is from Fais Island, Yap State. Jeremy is our resident Internet expert, and for sports questions, Julian is your man! So come to the PCC Library on Saturday and keep these guys busy.

Monday to Friday from 4 p.m. - 8 p.m., you will find Sunshine Garcia in the library. Sunshine, our newest staff member, is a Spring 1999 PCC honor student and graduate in Liberal Arts.

Many thanks to Jeremy, Julian, and Sunshine for their assistance this Summer Semester.

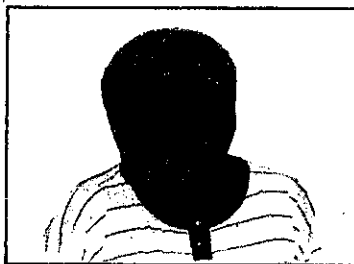
For further information, call 488-2470  
or 2471  
and ask to be connected to  
the Library



Sunshine Garcia  
1999 honor graduate



Jeremy Ytlagmar  
2nd year in Construction Technology



Julian Uguliyor  
2nd year in Construction Technology

## Field Trip to Ngatpang Waterfall By Recreation Unit Staff

Twenty-three (23) students will participate in the field trip to Ngatpang Waterfall to take place on Saturday, June 19, 1999. The purpose of the trip is to have students explore and to appreciate the environment in Babeldaob and enjoy relaxation and fun away from Koror. The trip was made possible through a request from the Student Activity Council (SAC) to the Recreation Office. Due to limited group transportation, we will not be able to accommodate more people, and instead we have arranged a similar trip to take place at the end of July. Read bulletins for this upcoming trip. For more information, contact Recreation Office at 488-3885.

## PCC Welcomes You

Too old to learn? NO! Age does not matter when it comes to education. Palau Community College is open to anyone who wants to learn on a college level. Classes are offered during regular working hours and even at night! We also provide training programs.

The Admissions & Financial Aid Office and Continuing Education staff are there to answer your questions or help you enroll in any courses that interest you.

Just pick-up the phone and dial, 488-2470 or 2471.


This project is a collaborative endeavor of the Palau Community College-Cooperative Research and Extension with the Ministry of Education and the Palau Business Association. It will implement the piloting of contract growing starting with at least one local hotel/restaurant or store and two farmer-cooperators with involvement of the aforementioned collaborators. An open forum or meeting with the local market outlets like stores, hotels, restaurants and government cafeterias and different groups of producers will introduce this concept of contract growing to the public for awareness and participation with the activity. Interested parties representing market outlets and producers with assistance of the project collaborators will be bound by a Memorandum of Agreement that stipulates the roles of both parties including volumes to be delivered regularly to the concerned buyers of produce by the producers and the agreed price of these produce. Back up activities for this contract growing scheme will be statistics and forecasts and training in best management practices (BMPs), soil management, crop production, marketing and farm management including record keeping and cash flows. Databases of existing men's, women's and youth groups in each state will also be established to include contract growing. Hopefully, this approach will minimize the problems for sustainable local supply and fluctuating prices and the lack of an effective marketing system and outlets for local produce in Palau in the long run. It is envisioned to serve as a model for other Micronesian island countries in developing a viable and sustainable marketing system in this region

For other information, please contact the PCC-CRE's phone (488-2740), fax (488-3307) and e-mail (ASuta@PalauNet.com).

**THANKS**

I want to thank Llemalt Ngirailemesang for volunteering his time to help me deliver and mail Mesekiu's News on time. Thank you so much Llemalt!!

 Dilubch Samil

 **Mesekiu's News**  
Palau Community College  
P.O. Box 9  
Koror, Palau 96940

**WEBSITE OF THE WEEK**

Brought to you by Jane Barnwell, PCC Librarian

Each week I would like to recommend a website that I have found particularly useful. This week, why not try searching:

<http://www.medicinenet.com>


The Internet is loaded with health-related sites. How do you select which one is authoritative? MedicineNet is an excellent website for information on diseases, procedures, and pharmaceuticals. This site offers a "forum" with a main article on each topic plus links to relevant information. The material, contributed by physicians, is thorough yet accessible (easy to understand!)...though of course it cannot substitute for your own doctor's care and advice.

**THANKS**

**Message of Appreciation**

Thanks to those offices who submitted their articles for this week's issue of Mesekiu's news. Let's continue to spread the news of our one and only community college through our unique newspaper.

**Celebrating Birthdays**

 Ayano Baules  
Lolita Ragus

**Happy Belated Birthday to You!**

PLACE  
STAMP  
HERE