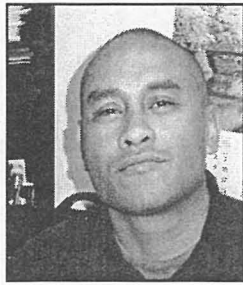


**ALUMNI NOTES**

**Class of 2002**

Egan Meyer



Earned his Associate of Science (AS) degree in Criminal Justice. He is working at Koror State Government in the Conservation & Law Enforcement Division as a Quality Control Officer. *Message: Education is the key to success, so go get your education.*

**Class of 2011**

Michelle Ueda



Earned an Associate of Arts (AA) degree in Liberal Arts. She has been hired as an Administrative Assistant at the Ministry of Health in the Human Resource Department. *Message: "Be the change you want to see in the world" Mahatma Gandhi.*

**Class of 2011**

Marica Thomas



Earned her Associate of Arts (AA) degree in Liberal Arts. She is working at Palau Pacific Resort as a Linen Attendant in the Housekeeping Department. *Message: Stay in school, study hard and enjoy life.*

**Alumni Notes** showcases MOC & PCC alumni who are positive role models and contribute to the quality of life in their local communities. If you are that alumnus/alumna or know someone who is, please contact the PCC Development Office at telephone number 488-2471. We would like to feature you in future issues of the *Mesekiu's News*.

**Mesekiu's News**  
Palau Community College  
P.O. Box 9, Koror, Palau 96940

**Celebrating Birthdays**

- |                   |        |
|-------------------|--------|
| Rosendo Skang     | May 02 |
| Dr. Isebong Asang | May 03 |
| Tublai Ililau     | May 03 |
| Maurine Alexander | May 06 |
| Soledad Garcia    | May 06 |

Happy Birthday To You!

**AG Students** cont'd from p.1

of Food and Agriculture Science students. Through these two programs, Agriculture Science students are provided opportunities for work study practicum, scholarships, and summer internships.

On Tuesday, April 17, 2012, eighteen (18) Agriculture Science Program students attended a 2 hour Career Information Session. The session covered the purpose and benefits provided by the RIIA and DE Programs and the need for professionals and technicians in the fields of Food and Agricultural Sciences. Career/Transfer Counselor Tublai Ililau discussed career opportunities for students majoring in Agricultural Science, the importance of taking a career survey interests to determine ones interests and to discover related careers to pursue,

as well as the benefits of pursuing a bachelor degree after graduation from PCC. Helgah Ngirchoimei, a sophomore AG major who works as a peer tutor for AG students through the work study practicum, and a past & current scholarship recipients encouraged students to do their best so they can do well academically and benefit from the multitude of opportunities available for AG students. AG Instructor Gachalian stressed the importance for students to do well and to make use of all the available support services. The session ended with the distribution of RIIA Scholarships to AG students who are in good academic standing (CGPA of 2.00 and above). Students were encouraged to do well in their classes so they can continue to benefit from the opportunities provided by the RIIA and DE Programs.

**JOIN THE ENDOWMENT FUND TODAY!**

Invest in the future of  
Our Students, Our College, and Our Nation

To support, contact us today at:

P.O. BOX 9 Koror, PW 96940  
Phone: (680) 488-2470/2471 ext. 252/253  
email: [tellei@palau.edu](mailto:tellei@palau.edu)  
website: [www.palau.edu](http://www.palau.edu)

**Vacancy Announcement**

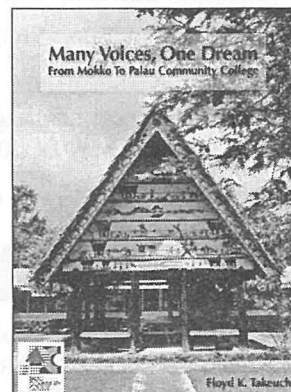
- (1) English Instructor, Learning Resource Center  
Salary range: \$14,802 - \$24,647 per annum
- (2) Math Instructor, Learning Resource Center  
Salary range: \$14,802 - \$24,647 per annum
- (3) Counselor, Student Life Office  
Salary range: \$12,650 - \$19,479 per annum
- (4) CHL Palau Outreach Educator  
Salary range: \$12,653 - \$19,479 per annum
- (5) Researcher/Aquaculturist  
Salary: \$30,000 per annum
- (6) Assistant Director of Admissions & Financial Aid  
Salary range: \$16,010 - \$24,647 per annum
- (7) Accounting Technician (Payroll)  
Salary range: \$9,913.00 - \$16,954 per annum
- (8) Librarian  
Salary range: \$16,010 - \$24,647 per annum
- (9) Associate Professor, Business Accounting  
Salary range: \$18,009 - \$27,725 per annum
- (10) Associate Professor, Library & Information Serv.  
Salary range: \$18,009 - \$27,725 per annum

For application forms and information, please contact Karen Mobil at PCC Human Resources Office at 488-2470/71, ext. 227, email [hr@palau.edu](mailto:hr@palau.edu) or download form at [www.palau.edu](http://www.palau.edu)

PCC is an Equal Opportunity Employer

**NEW BOOK**

*Many Voices, One Dream*  
From Mokko to Palau Community College  
By Floyd Takeuchi



Available at PCC Bookstore!  
Retail Price: \$35.00

Call 680-488-2470 for more information.  
Online information at: [www.palau.edu](http://www.palau.edu)

To purchase a copy, pay at the Business Office and bring receipt to the Bookstore to receive a copy of the book.

**FREE!!! Palau Community College**



**MESEKIU'S NEWS**



Friday, April 27, 2012

Weekly Newsletter

Volume 14, Issue 17

**Payless Donates to PCC Day Care**



Day Care students with teachers, Director Blelai, PCAA Representative and Payless representatives.

On April 17, 2012 Payless General Manager Peter Gaymann and his team (Jessica Delbirt & Tito Apistar) delivered 18 cases of yogurt to the Day Care Center. On hand to receive the donations were the eager youngsters, their teachers, Director of Day Care Center and PCAA board member Jemmy Blelai, and PCAA representative Inung Ikeda. The Day Care Center currently has 45 students. The program exists to assist single working parents or

parents who wish to continue their education by providing Day Care services to their children during the day so they can work or attend school.

A big thank you to Payless, especially to Manager Peter Gayman and his team for the wonderful and healthy snacks. PCC Day Care Center is one of the many schools who received donations of Yogurt from Payless.

**AG Students Attend Career Info Workshop**

Contributed by CRE



Instructors with AG students and their stipends.

The PCC-CRE Resident Instruction in Insular Programs overall impact are to increase the Areas (RIIA) and Distance Education (DE) enrollment, retention and graduation rates

AG Students cont'd on p.4

*Palau Community College is an accessible public educational institution helping to meet the technical, academic, cultural, social, and economic needs of the students and communities by promoting learning opportunities and developing personal excellence.*

**ASPCC Holds Forum**

The Associated Students of Palau Community College (ASPCC) held a forum on Thursday April 19, 2012 to share general information regarding what ASPCC is composed of, what its roles and responsibilities are, and what it does for the students. The main goal for the forum was to promote and encourage other students to join the ASPCC, as there are currently 2 vacancies - ASPCC President Elect, and One Freshmen Representative. Andrea Uchel, a Freshmen Representative gave a short talk about ASPCC and her experience, encouraging students to run for the positions. The election for the 2 vacant posts is scheduled for May 11, 2011.

Students were also given the opportunity to hear from the Japan Embassy representatives who did a presentation on the various scholarship opportunities that the Government of Japan offers to the Palauan students. They discussed the Undergraduate Scholarship and the Specialized Training College Scholarship. Loyola Darius, a scholarship recipient and now an instructor at PCC, gave a small presentation on her experience in terms of how the scholarship assistance helped her complete her education and launch a promising employment career.



ASPCC Officers & Senators with Dean Daniel.

## ETS Participants Tour Snorkeling Spots

Contributed by ETS Staff



ETS participants and staff ready to experience Jellyfish Lake.

On April 14, 2012 Educational Talent Search (ETS) Program participants from Emmaus High School attended a field trip to Palau's most famous snorkeling spots: Milkyway, Jellyfish Lake, Clam City, Cemetery and the Soft Coral.

As part of their science class, the students got to observe first-hand the uniqueness of the white mud and explore the possible causes of this natural phenomenon at the Milkyway and compare it to other places in the world. They continued on to tour Jellyfish Lake, encountering

the famous non-stinging species endemic to the area. Upon arriving at the Jellyfish Lake, their science teacher Ms. Happy Gay Torres asked the students to try and distinguish the differences between the jellyfish inside the lake and the ones in the open ocean. Before reaching Ngchus for lunch, they made a quick stop at Clam City near Ngchelobel, where the students had their first glimpse of huge giant clams. During lunch and an hour of relaxation, they discussed what was observed in the first three stops of

ETS cont'd on p.3

## LS Students Revamp AES Library

Contributed by Megan Beard



LS students and volunteers working hard on Angaur Elementary School Library.

On April 20-22, students from the Library and Information Services (LS) program and a few volunteers made the four hour voyage to Angaur State to assist with a library renovation project at the Angaur Elementary School Library. The students worked long into the night assembling new shelving, organizing and labeling library materials, cleaning, and redesigning the library space. As a result, the school library is now much more usable and attractive for AES students, faculty, and staff and for the local community. The project also gave students first-hand experience reorga-

nizing and redesigning a library space and a chance to put their classroom knowledge into practice in a real world setting.

Great work to the students and volunteers: Joleen Ulengchong, Hulda Lukas, Jessica Brooks, Scott Tairuwepiy, Helston Haleyalib, Jeremiah Hagilelipy, Bernard Mawaisiug, Jake Smith, Mathew Yareoiutepiy, and McCarthy Tawerilyago. And a big thanks to Angaur State and the residents of Angaur for their hospitality and to PCC Academic Affairs and Student Life for support with the project.

## FSA Raises Over \$7,000 For Scholarship

The Faculty Senate Association (FSA) held its annual fundraising for the student scholarship fund in two stages. The first effort was through a Telethon at OTV on April 15, 2012. The telethon through pledges, raised \$3,232.00. The second part of the fundraising was the annual Gentlemen's Gourmet (GG). This year was the 4th GG, again held at Ngarachamayong Cultural Center on April 21, 2012. FSA had 50 chefs providing scrumptious dishes, from pasta to seafood, to vegetarian dishes and even kangkum smoothies. Through sale of tickets and outright donations, the GG raised over \$4,000.00. The net profit from both the telethon and the Gentlemen's Gourmet was \$7,248.81. The proceeds will be used to support student through scholarships.

FSA would like to sincerely thank every one for their support through pledges during the telethon and purchase of tickets for the GG. Your generous donations will go a long way to support student learning and our national capacity building. Special thank you to OTV for hosting and supporting this first ever telethon.

Also, FSA thanks the following individuals who assisted during the Telethon: Dr. Caleb Otto for cooking, Elsei Tellei, Dean Chilton and Adora Nobuo for hosting the show, the Pottery group, Marmar maker Evelyn Tachibelmel, Dancers - PCC Tourism Club & Ngerkesoal "Serbonitas" for their presentations, and singers Neil Fisher & Kiblas Soaladaob. For the Gentlemen's Gourmet, FSA thanks the various sponsors and donors for their donations and support, Dante Rengiil for hosting the evening, singers Kelau Remeliik, Kimie Ueki, Malo Paulis, Pua Paulis and Constantino "Kostang" Remeliik for keeping everyone entertained, the RPSO & PCC Tourism Club Dancers for their performances, the Chefs for their donation of dishes, Bilung Gloria G. Salii for the use of Ngarachamayong Cultural Center and Edwin Ongerung for the sound systems.

## Japanese Government Scholarship

Available at Development Office  
Stop by and pick up an application.

## BITS AND PIECES...

### SPECIAL BULLETIN

#### TO ALL STUDENTS

Students who are interested in attending Summer 2012 must come to the Office of Admissions & Financial Aid and see Director Dahlia Katosang regarding their Financial Aid for Summer 2012 no later than Wednesday (05/09/12).

Thank You

### Summer Kids Program

June 04 - 29, 2012

Last day to Register: June 1, 2012

PCC-CE Summer Kids Program offers the following classes:

- Math (3rd - 8th Grade)
- English Reading (3rd - 8th Grade)
- English Writing (3rd - 8th Grade)
- Palauan Orthography (3rd - 8th Grade)
- Marine Science (6th - 8th Grade)
- Keyboarding (6th - 8th Grade ~ 20 students)

For more information, contact CE Office at 488-6223 or 488-2470/2471.

### SCHOLARSHIP

Huayu (Mandarin)  
Enrichment Scholarship

Ministry of Foreign Affairs (MOFA)  
Republic of China (ROC)

Learn Mandarin (Chinese Language)  
Application Deadline: May 18, 2012

APPLICATION available @ Development Office

### Apology

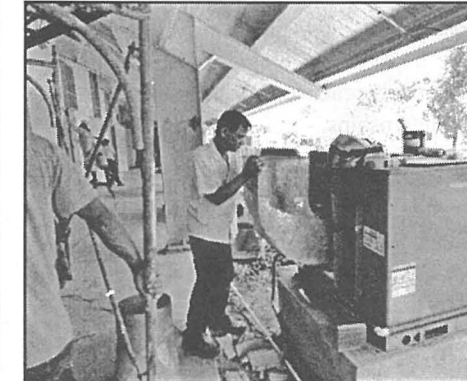
Mesekiu's News would like to apologize to Malarie Ambai, recipient of the Roman Tmetuchl Scholarship. *Mesekiu's News* inadvertently misspelled her name in Vol.14, Is.16 edition.

### News/Stories Wanted

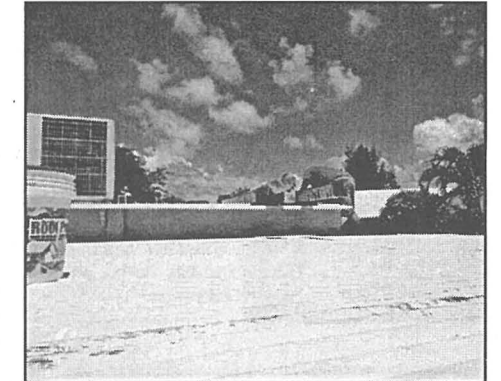
MESEKIU'S NEWS welcomes stories/ articles/ announcements from students, faculty, and staff. Submission deadline is Monday at 4:30 p.m. in hard and electronic copies to aduraa@palau.edu, dilubchs@palau.edu and alvinam@palau.edu.

Please call ext. 250/252/253 if you intend to submit your article after Monday or for more information.

## Maintenance Crew Repairs Cafeteria



Victor (AC Instructor) readjusting the air conditioning vents to go into the cafeteria.



Abel on the roof top painting the tins to stop the rusts.

The Maintenance workers have been busy as the Commencement Exercises for PCC approaches. They have been working at the cafeteria, giving it a new face lift. They have completely changed all the double doors covering the windows totalling about 25 doors, removed the old gutters and replaced them, relocated the air conditioning outside units, giving the cafeteria a nice

quiet and cool atmosphere. At the same time, workers are busy rehabilitating the roof to prevent leaks and to expand its life and to beautify the facility. With the new face lift, the cafeteria is looking beautiful.

Thank you maintenance crew for your continuous work in beautifying and keeping our campus a safe environment.

## Belau Royal Yacht Club Donates DVDs

Contributed by Jessica Brooks



The Belau Royal Yacht Club members donated an assortment of 150 entertainment DVDs to the expanding PCC Library video collection last week. This collection is available for all library patrons to check out and anyone is welcome to make a donation.

## ETS cont'd from p.2

their trip before they continued their tour to the remaining spots. After lunch, they continued to the Cemetery where students observed and identified the different types of fish inhabiting the area. Witnessing the feeding frenzy of the beautiful and colorful friendly fishes in the area was rewarding to the students. Then on they went to the Soft Coral to observe the variety of

corals and learned that there are less corals now than before the El-Nino. The guide mentioned that a good research topic would be on the effects of El-Nino on marine life.

All had fun while learning about some of Palau's marine life and the importance of their natural habitats within our environment.