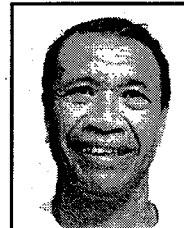


## Alumni Notes

### Class of 1983

Sunray Meluat



Earned a Certificate of Achievement in HEDM (Heavy Equipment Diesel Mechanic). Worked at PCC Logistics Office for almost 10 years. A mechanic for the old patrol boat in Marine Law Enforcement - Public Safety for 14 years. A private business owner of Meisan Trash

Services (778-4034).

### Class of 2000

Grace Merong



Earned a Certificate of Achievement in General Office Clerk in 2000. An Associate of Applied Science in Library Science in 2009. A PCC Library Assistant for 15 years. A Library Technician in charge of the Micronesia-Pacific Collection at Tan Siu Lin PCC Library. Message:

Library Science is an interesting field of study. Palau needs people in this area. Come to PCC and find out.

### Class of 2009

Obechou Mereb



Earned an Associate of Arts in Liberal Arts in 2009 with a Student Outstanding Award. A member of Phi Theta Kappa Honor Society. An Assistant Officer for Belau Royal Airways Corporation. Intends to further educational goals in the near future. Message: Pursue your educational goals. Start at PCC & get your 2 yr. degree/certificate. Join the workforce.

**Alumni Notes** showcases MOC & PCC alumni who are positive role models and contribute to the quality of life in their local communities. If you are that alumnus/alumna or know someone who is, please contact the PCC Development Office at telephone number 488-2471. We would like to feature you in future issues of the *Mesekiu's News*.

**Mesekiu's News**  
Palau Community College  
P.O. Box 9, Koror, Palau 96940

### Celebrating Birthdays

Maurine Alexander	May 06
Soledad Garcia	May 06
Gamberlyn S. Ngirmeriil	May 08
Kuye Belelai	May 13
Lakolani Olengette	May 13

Happy Birthday To You!

## Archaeology Cont'd from p.2

another version stated that the monoliths represent kukau from different taro patches that demigod Iluochel made around Palau. The tallest monolith is supposed to represent Angaur (see Olsudong et al 2006:117-120).

Aside from the oral history, the purpose for this trip was to identify visible natural and human induced threats to cultural sites and the level of damage this site has as well as the site's vulnerability.

The PCC archaeology students and adjunct instructor, Ms. Sunny Ngirmang would like to thank the Governor of Ngarchelong State, Governor Brown Salvador for allowing the opportunity for the students to visit the site, and also to the Bureau of Arts & Culture staff, Calvin Emesiochel, for providing on-site field assistance. For more information regarding Ngarchelong historical site visits and/or site information, contact Ngarchelong State Office at telephone number 488-2871 or 488-6564.

## International Youth Festival HIV/AIDS - Keep the Promise

Contributed by Herry Frank R(a)jhese.fm

We, the OA-221 Program students, invite all of you from Palau Community College to come and join us on **May 14, 2011, from 2:00 - 5:00 p.m. at PCC Assembly Hall.**

We will do lots of activities including dancing, singing, playing music, and much more including presentation and discussion about HIV/AIDS.

There will be performances from Palau and our neighboring nations of Micronesia. Please take time to come and bring your families and friends. There will be free testing and refreshment. Come One Come All.

## PALAU BEACH BUNGALOWS

Peace & Relaxation Palauan Style!

Only \$40+tax daily rate  
Private a/c bedroom&bath, living room, kitchenette  
Beachside on big island of Babeldaob  
Melekeok State  
30 minutes from Palau International Airport  
RESERVATIONS: 680.587.2533  
Swim, snorkel, jungle walks, cultural sites  
palaubeachbungalows@palaunet.com  
www.palauparadise.com

## FSM Cont'd from p.1

out their suggestions on how the FSM government can do to effectively assist the students/citizens away from home. One such idea was the establishment of an FSM office here in Palau for FSM citizens.

The senators thanked the FSM students and citizens, and reassured them that they will convey their issues to the FSM congress. In conclusion, they courteously thanked President Tellei and the staff for the opportune moment on such a short notice.



We are looking for mature, reliable, and punctual PCC students to work as lab assistants for the Online and the Open computer labs starting summer 2011. You must be able to work responsibly without constant supervision. If you have these characteristics and are interested, please contact Johanna Yaoch at 488-2471 (PCC) ext. 256.

**Apply Now!**

### Vacancy Announcement

- (1) English Instructor, Learning Resource Center  
Salary range: \$14,802 - 24,647 per annum
- (2) Math Instructor, Learning Resource Center  
Salary range: \$14,802 - 24,647 per annum
- (3) Financial Aid Counselor, Adm. & Financial Aid Office  
Salary range: \$12,049 - 20,607 per annum
- (4) Computer Technician, Computer Services Office  
Salary range: \$12,049 - 20,607 per annum
- (5) Director, Finance  
Salary range: \$18,730 - 28,833 per annum

For application forms and information, please contact Karen Mobil at PCC Human Resources Office at 488-2470/71, ext. 227.

PCC is an Equal Opportunity Employer.

FREE!!!

# Palau Community College



# MESEKIU'S NEWS



Friday, May 06, 2011

Weekly Newsletter

Volume 13, Issue 18

## FSA Strives for Student Success

### 3rd Annual Gentlemen's Gourmet Nets Over 5K

Contributed by FSA



FSA members glowing with high spirits.

(photo by Danka Ledgerwood)

The Faculty Senate Association (FSA) accomplished a successful feat of raising over \$5000 of scholarship funds for incoming high school students who begin their postsecondary goals at the college.

Byron Silil and Chance Douglas were this year's FSA Scholarship recipients. The 3rd annual Gentlemen's Gourmet 2011 was held on Saturday, April 30, 2011, at Ngarachamayong Cultural Center. FSA

FSA Cont'd p. 3

## FSM Senators Visit FSM Students & Citizens

Contributed by Mekreos Silil



Sen. Joseph Urusemal and Sen. Paliknoa Welly with staff attorney Jonathan Pinkney (inset) met with on-campus/off-campus FSM students attending PCC and FSM citizens residing in Palau. The purpose of the meeting was to understand the students' financial situations and concerns pertaining to their educational status at the college. Several FSM residents in Palau also voiced

FSM Cont'd p. 4

Palau Community College is an accessible public educational institution helping to meet the technical, academic, cultural, social, and economic needs of students and communities by promoting learning opportunities and developing personal excellence.

## ES Club Joins Earth Day 2011

Contributed by Mailie Nginou

On Friday, April 22, 2011, the Environmental/Marine Science students and fellow club members joined the celebration of Earth Day at the Track and Field. As the theme for this year was WATER FOR LIFE, the students leveraged this opportunity to present the Dugong Awareness Campaign with displays and questionnaire.



(l-r) Instructor V. Yuji with Itungelbai B., Persis O., Byron S., Dilmowais R., Mailie N.

## CRE at Earth Day



Extension Agent of Cooperative Research & Extension, Leilanie Rechellul, at CRE booth.

# Archaeology Students at Kukau el Bad

Contributed by Sunny Ngirmang



Archaeology students with Ann Kloulechad & Calvin Emesiochel (BAC) at Kukau el Bad, Ollei (photo by Kiblas S.)

On April 19, 2011, the PCC archaeology students along with Ann Kloulechad, Calvin Emesiochel, and Kiblas Soaladaob kayaked to Kukau el Bad. The site is called Kukau el Bad (F1) within lungel traditional village. Feature 1 contains a stone platform and several monoliths collectively called Kukau el Bad. According to Hijikata's

(1973) information, the monoliths were olketokel (food stands) for taro offerings when a demigod Uab died. Another account was collected during the 1999 survey stating that the area was an altar where offerings of kukau (Colocasia esculenta) were made when taro disease and purple swamp hens that eat taro became a problem. Still

Archeology Students Cont'd p. 4

## Summer Kids Program

### 3rd - 8th Graders

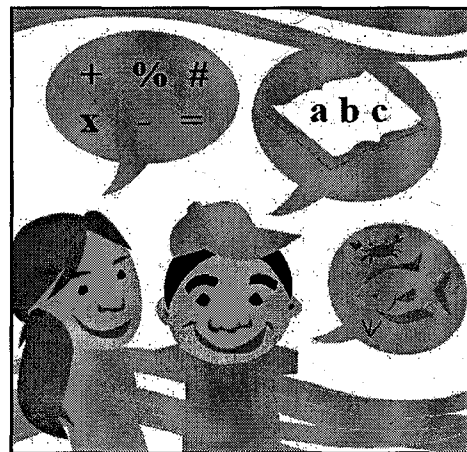
June 06 - July 15, 2011

- Math (3rd - 8th)
- English Reading (3rd - 8th)
- English Writing (3rd - 8th)
- Palauan Orthography (3rd - 8th)
- Marine Science (6th - 8th)
- Keyboarding (6th - 8th)

First Come First Serve Basis

25 students for each class  
Keyboarding Class (20 students)

The Summer Kids Program is a program of the Continuing Education Office that is designed to provide educational activities to enhance and foster students' learning skills.



Illustrated by Elsei Tellei.

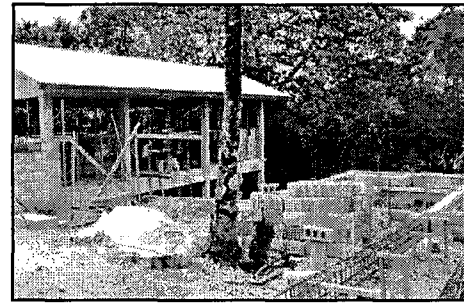
### REGISTER NOW

Call Anna or Leona 488-6223  
or 488-2471 ext. 237

# On-Campus Personnel Housing

Contributed by Physical Plant

The college is continually seeking ways to improve on-campus housing for its personnel. A project to erect 2 two-story bungalows for married personnel behind Meluis building started in January and is tentatively expected to be completed by the end of this year. This project is in line with the college's 15-Year Institutional Master Plan.



**Other News** Two containers that were used during the MicroGames 2010 have been converted into storage to store wooden materials from the sawmill for facility projects as well as student projects in technical education classes.

## Mesekiu Basketball Team Earns Sportsmanship Award

Contributed by Hamilton Maech

The Mesekiu Basketball Team captured the Sportsmanship Award for 2010-2011 ABL Basketball League. Anchored by Coach Hamilton Maech, the team was recognized for the following points.

- well organized & well disciplined
- full uniforms
- on time/full attendance in every games

The team members include Nena Tulensru, Bija Jesse, Pius Tamguyad, Timothy Gamou, Lance Sulog, Keith Taliugyan, Eric Defan, Lucas Lukan, Alvin Defmew, Amando Fichmai, Joseph Mangarfir and Jackson Jack.

### CHEERS FOR MESEKIU BASKETBALL TEAM!

# BITS AND PIECES...

## ANNOUNCEMENT

### Cafeteria Catches a CATCH!



Blue Fin Tuna Fish, 750 lbs.  
Sold to the cafeteria by  
Gov. Laurentino Ulechong,  
Ngaraard State.

(picture: dorm students posing with the fish)

### PPEC Report Jan-June 2011

Submit to Development Office  
by Monday, May 09

### Summer Internship 2011

2nd Year Students & Counselors/Advisors  
Call Vincent Ito @ CPC Office  
488-6504 for further details  
Working Hours, Monday-Friday  
DEADLINE: May 20, 2011

### Apology

The Development Office inadvertently omitted to indicate the appropriate picture caption of the following Mesekiu's News issue, April 29, V13-17 Page 1

Waseda UNISC Rep Visits  
Picture caption: Fenny Seklii instead of Francisco.

### News/Stories Wanted

MESEKIU'S NEWS welcomes stories/articles/announcements from the college community. Submission deadline is Monday at 4:30 p.m. in hard and/or electronic copies to [adoraa@palau.edu](mailto:adoraa@palau.edu), [dilubchs@palau.edu](mailto:dilubchs@palau.edu), and [alvinam@palau.edu](mailto:alvinam@palau.edu).

Please call ext. 250-253 for more information.

# FSA

Cont'd from p.1

extends a THANK YOU to all who assisted in organizing the occasion, sale of tickets, the donors, chefs, performers, and guests.

### Donors (donations)

Belau Art Gallery Bilung Gloria G. Salii  
Carol Whalen Cliffside Hotel CTSI  
Danka Ledgerwood's Photo Gallery  
Dolphins Pacific Donut House  
Elilai Spa (PPR) Emaimelei Restaurant  
Fish n' Fins Islander Heritage Gift Shop  
Kumangai Bakery Neco Marine  
Melusch-Dil Skin Care & Wellness Center  
Palasia Hotel PNCC Palau Shop  
PPR PRR Dr. Patrick U. Tellei  
Sam's Tours Sarah's Yum Yum  
Shimbros Sonia's Beauty Salon  
Sun's Flower Shop

### Chefs (culinary skills)

Clayton Ngiraked Don Hanser  
E-Van Ongprung Joe Chilton Joe Lala  
Keiden Skilang Louie Hatfield  
Michael Gliniski Robert Ramarui  
Ron Ledgerwood Satoru Adachi  
Sen. Mark Rudimch Techitong Adachi  
Tim Mitchell Torsten Schaudt  
Winfred Rechejungel Concious Kitchen  
Sarah's Yum Yum Sea Passion Hotel  
The Taj

### Performers

Kamate, Joanne Malchelmar  
Outer Island Kids



(photos by Danka Ledgerwood)

